




## FX Luminaire RP-32 Series Path Lights Installation Guide

[Home](#) » [FX Luminaire](#) » FX Luminaire RP-32 Series Path Lights Installation Guide 

### FX Luminaire RP-32 Series Path Lights

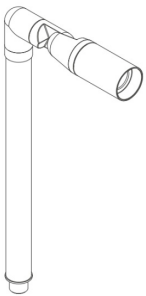


## Contents

- [1 Other Models](#)
- [2 Instruction For Use](#)
- [3 Warning– To Reduce The Risk Of Fire Or Injury To Person](#)
- [4 Warning – Risk Of Electric Shock](#)
- [5 Low-voltage Cable Shall](#)
- [6 Customer Support](#)
- [7 Documents / Resources](#)
  - [7.1 References](#)
- [8 Related Posts](#)

## Other Models

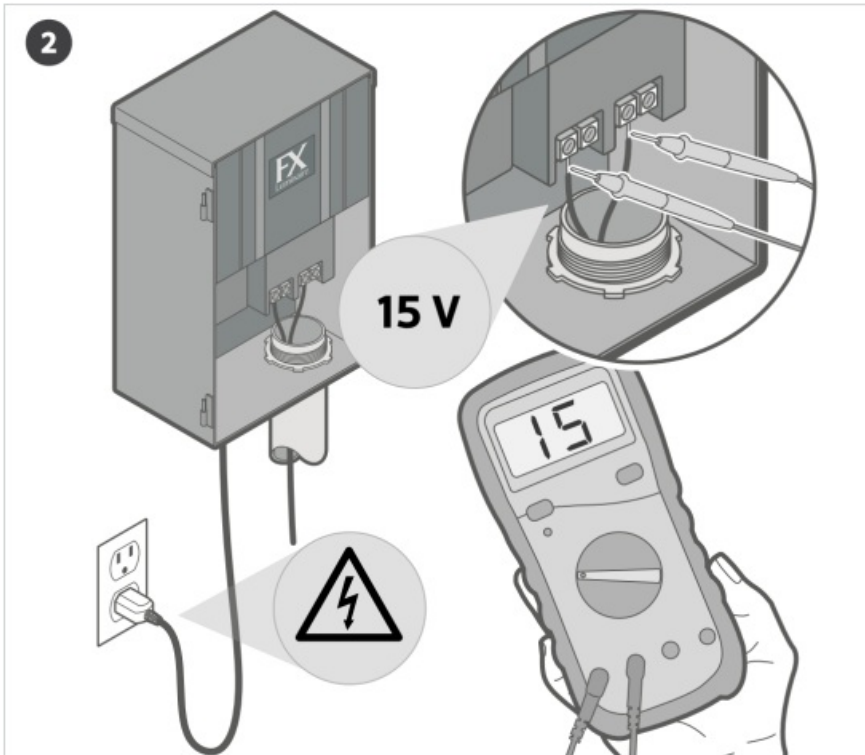
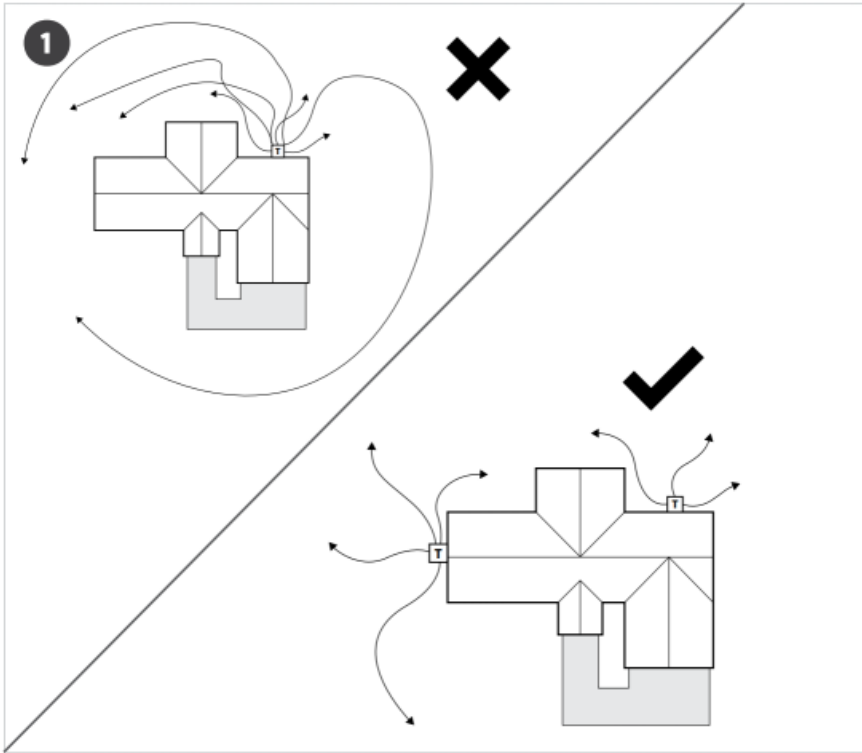
- pp-36

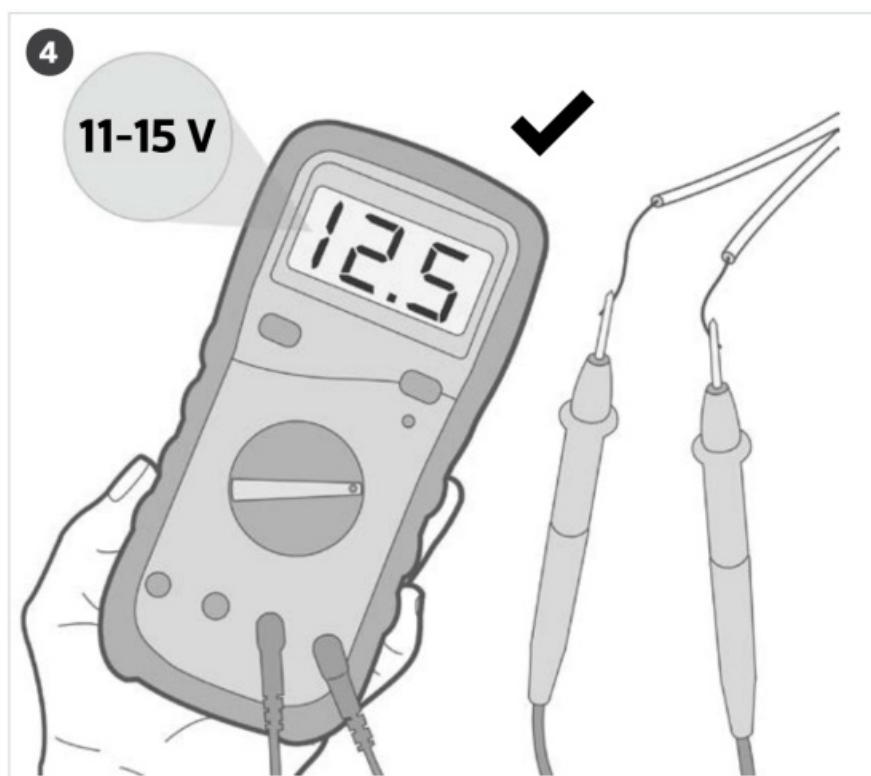
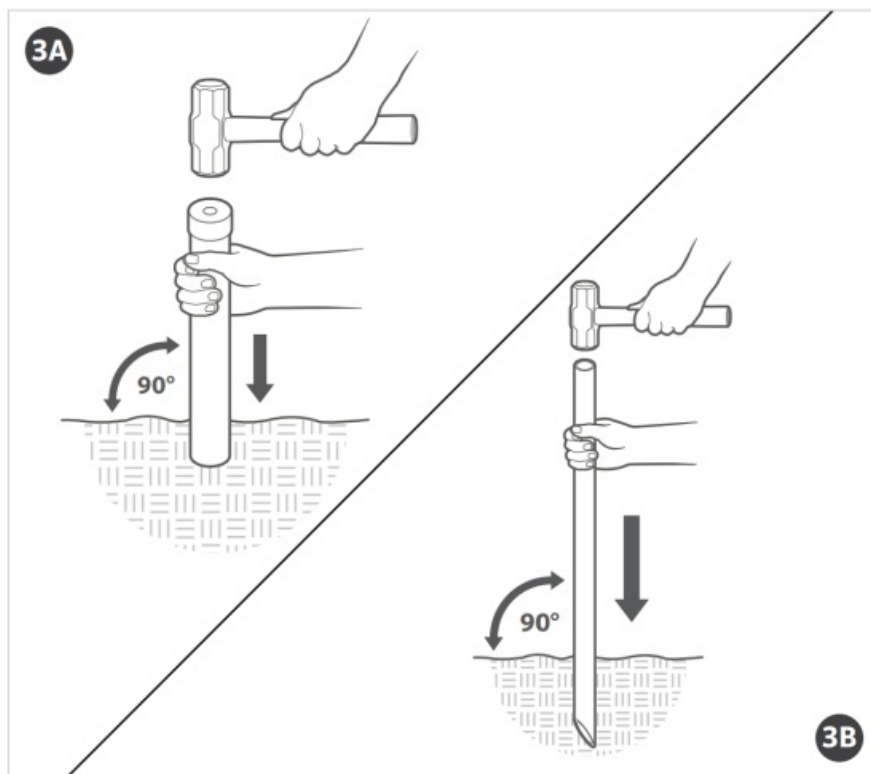


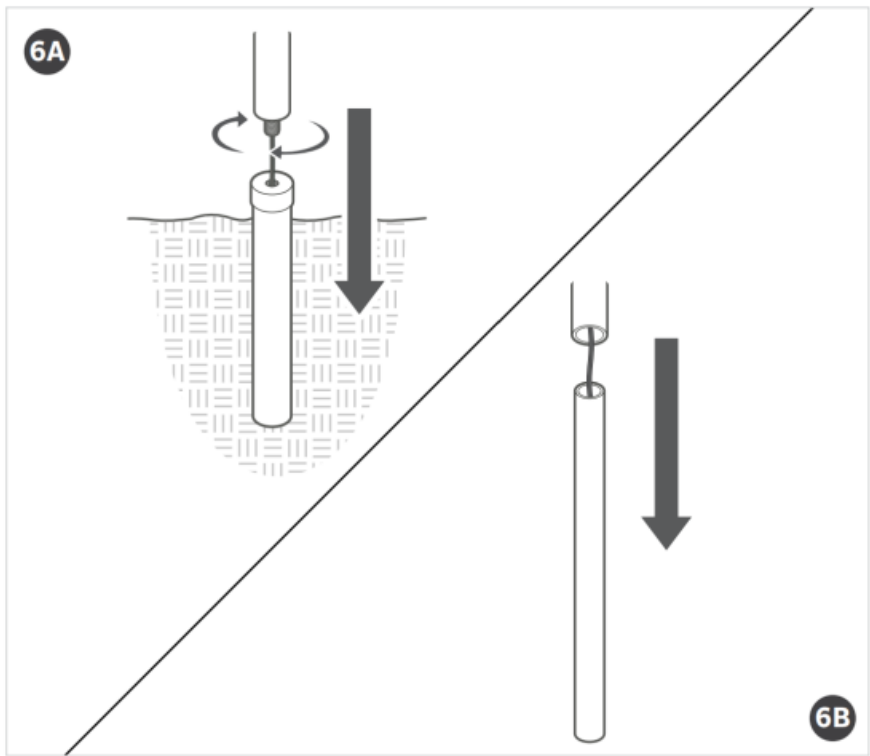
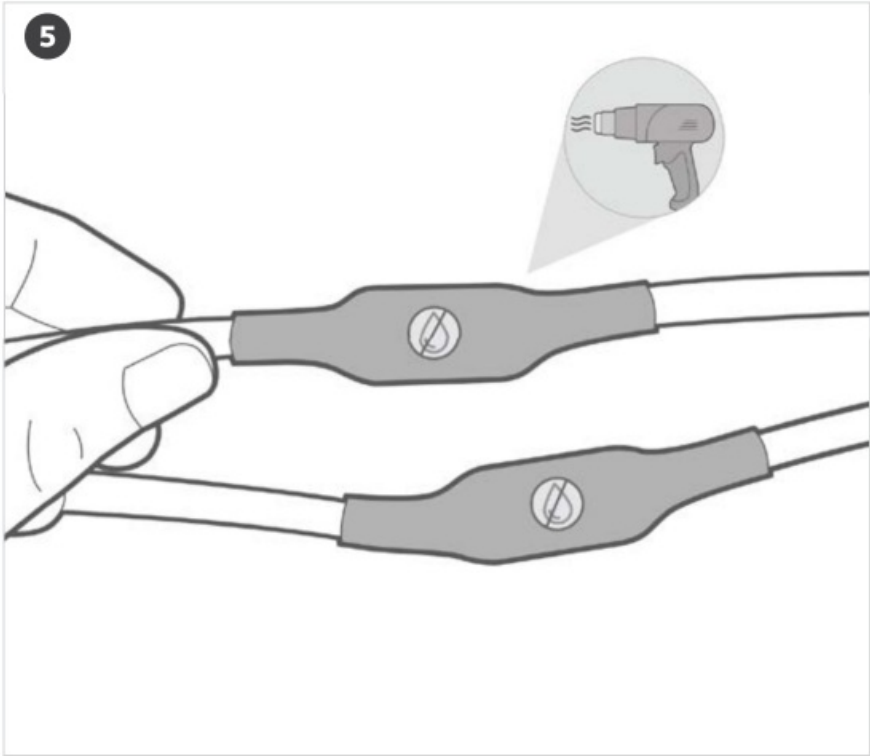
- RP-32/33

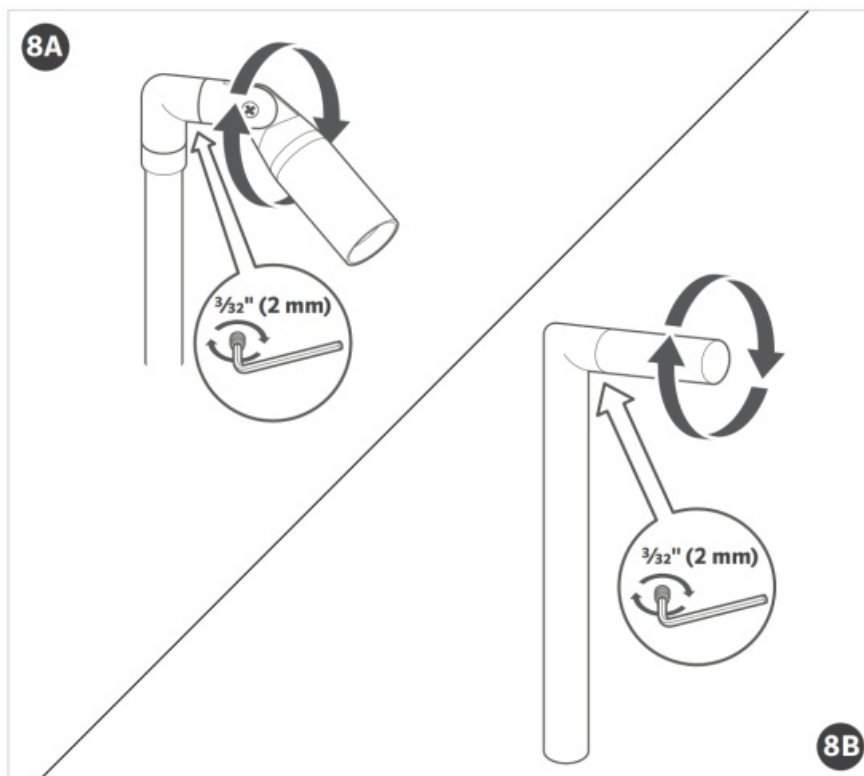
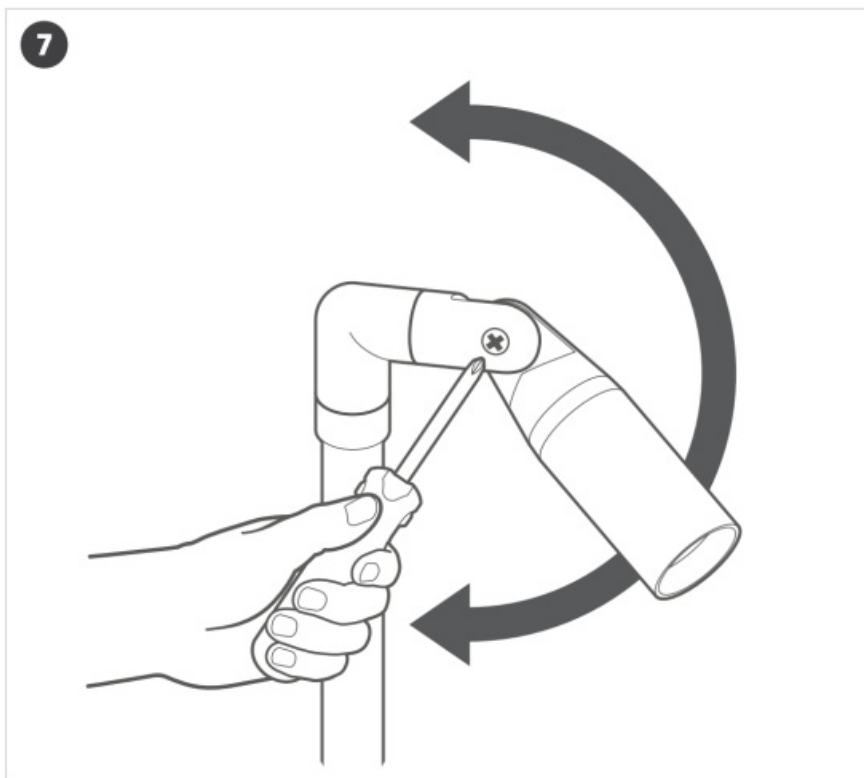


## Instruction For Use









### **Warning— To Reduce The Risk Of Fire Or Injury To Person**

- Turn off/unplug and allow to cool before replacing lamp.
- Lamp gets HOT quickly. Contact only switch/plug when turning on.
- Do not touch hot lens, guard, or enclosure.
- Keep lamp away from materials that may burn.
- Do not touch the lamp at any time. Use a soft cloth. Oil from skin may damage lamp.
- Do not operate the fixture fitting with a missing or damaged shield.

### **Warning – Risk Of Electric Shock**

- May be installed less than 5' (1.5 m) from a pool, spa, or fountain when used with a UL 379 listed transformer.
- A fixture shall not use tungsten halogen lamps unless the fixture is marked for such lamps.
- Supply connection and electrical components are located above ground level, except for secondary cord that is suitable for wet locations.

## Low-voltage Cable Shall

- Be protected by routing in close proximity to the fixture or fitting or next to a building structure, such as a house or deck.
- Not be buried except for a maximum 6" (152 mm) in order to connect to the main low-voltage cable.
- Have the length cut off so that it is connected to a connector within 6" (152 mm) from a building structure, a fixture, or fitting

These products contain a light source of energy efficiency class G.

## Customer Support



[RP LED board replacement fxl.help/RPledboard](https://fxl.help/RPledboard)



[PP-36 LED board replacement fxl.help/PP36ledboard](https://fxl.help/PP36ledboard)



[Voltage Drop Calculator fxl.com/voltage-drop-calculator](https://fxl.com/voltage-drop-calculator)



[Path Light Spacing Calculator fxl.com/pl-space-calc](https://fxl.com/pl-space-calc)



[fxl.com/support](https://fxl.com/support)

LANDSCAPE & ARCHITECTURAL LIGHTING | Learn more. Visit [fxl.com](https://fxl.com)





# FXLuminaire®

## Documents / Resources



[FX Luminaire RP-32 Series Path Lights](#) [pdf] Installation Guide  
RP-32, RP-33, PP-36, RP-32 Series Path Lights, RP-32 Series, Path Lights, Lights

## References

- [User Manual](#)

[Manuals+](#), [Privacy Policy](#)

This website is an independent publication and is neither affiliated with nor endorsed by any of the trademark owners. The "Bluetooth®" word mark and logos are registered trademarks owned by Bluetooth SIG, Inc. The "Wi-Fi®" word mark and logos are registered trademarks owned by the Wi-Fi Alliance. Any use of these marks on this website does not imply any affiliation with or endorsement.