




FX Luminaire 189106 QB LED Up Light Installation Guide

[Home](#) » [FX Luminaire](#) » FX Luminaire 189106 QB LED Up Light Installation Guide 

FXLuminaire®

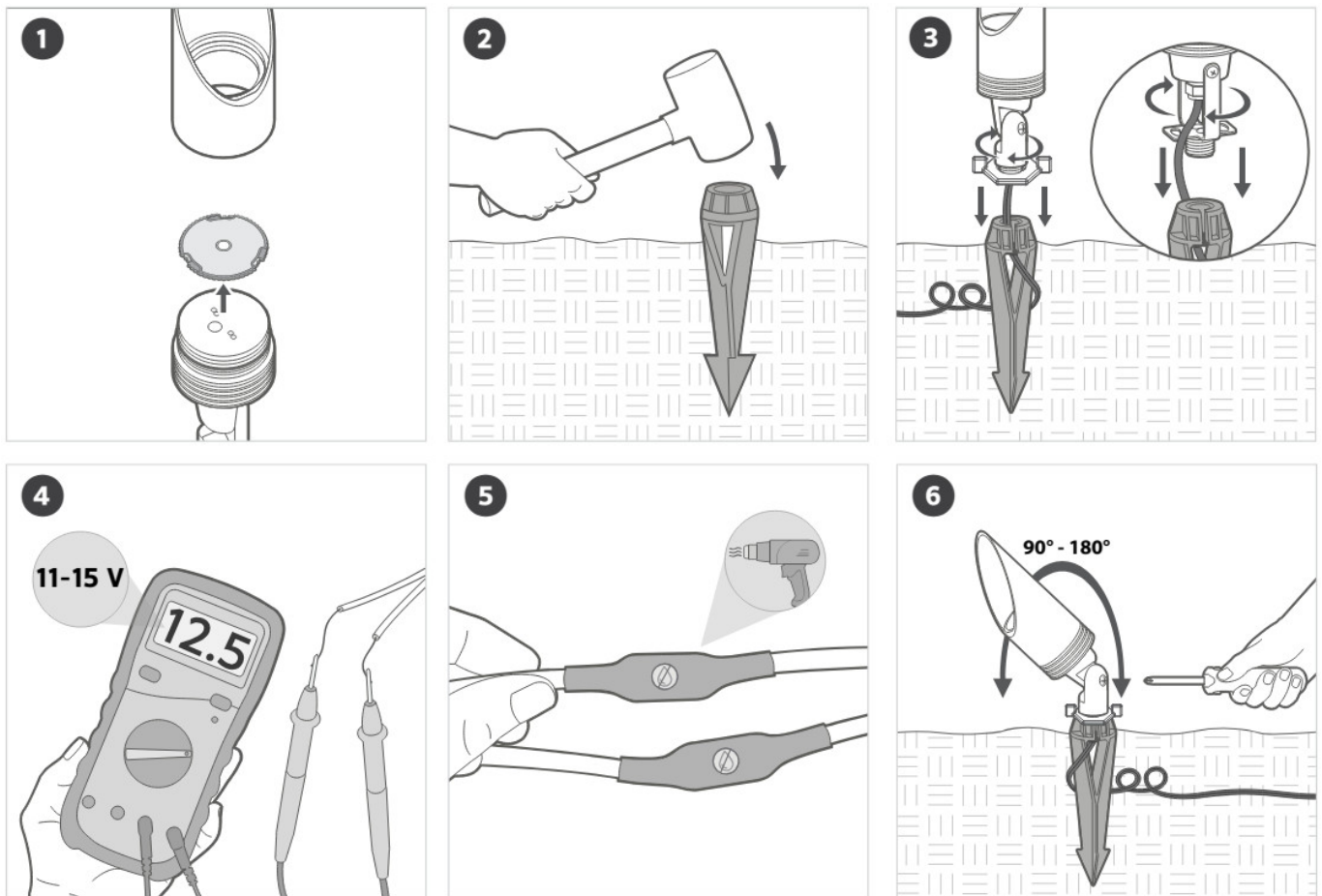
189106 QB LED Up Light
Installation Guide

Contents

- [1 DESIGNER/STANDARD | UP LIGHT](#)
- [2 INSTALLATION](#)
- [3 CIRCUITING GUIDELINES](#)
- [4 TRANSFORMERS](#)
- [5 Documents / Resources](#)
 - [5.1 References](#)



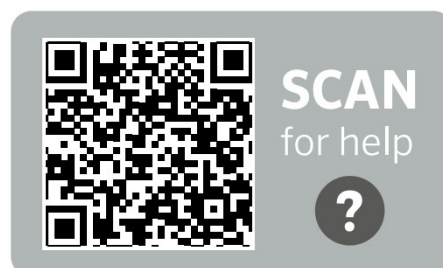
DESIGNER/STANDARD | UP LIGHT

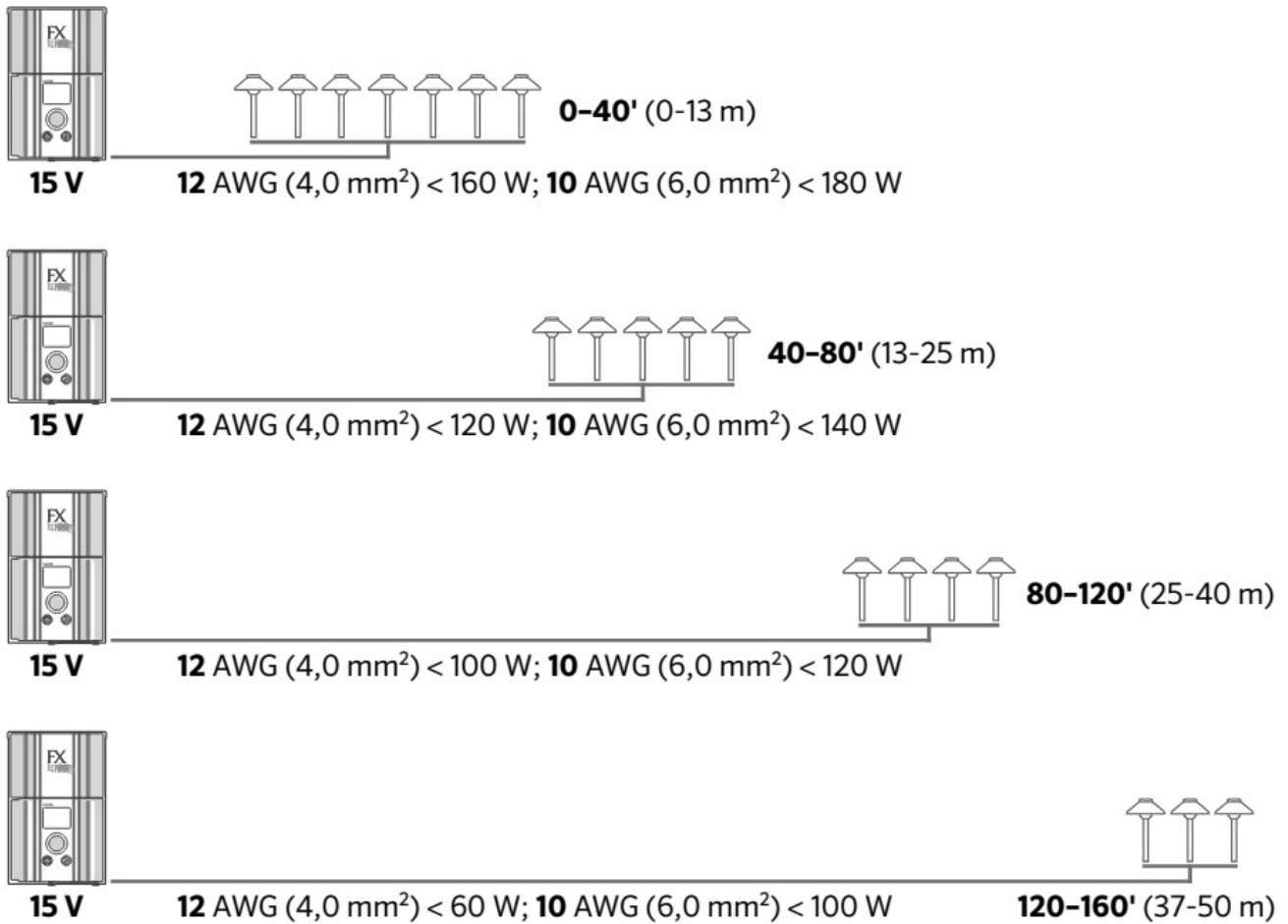


INSTALLATION

1. Change beam angle lens by removing and replacing existing components (optional).
2. Pound stake into ground.
3. Thread fixture into stake. Coil extra wire for future servicing.
4. Use voltmeter to ensure 11 to 15 V at fixture.
5. Connect wiring with waterproof connector.
6. Aim fixture as desired.

CIRCUITING GUIDELINES



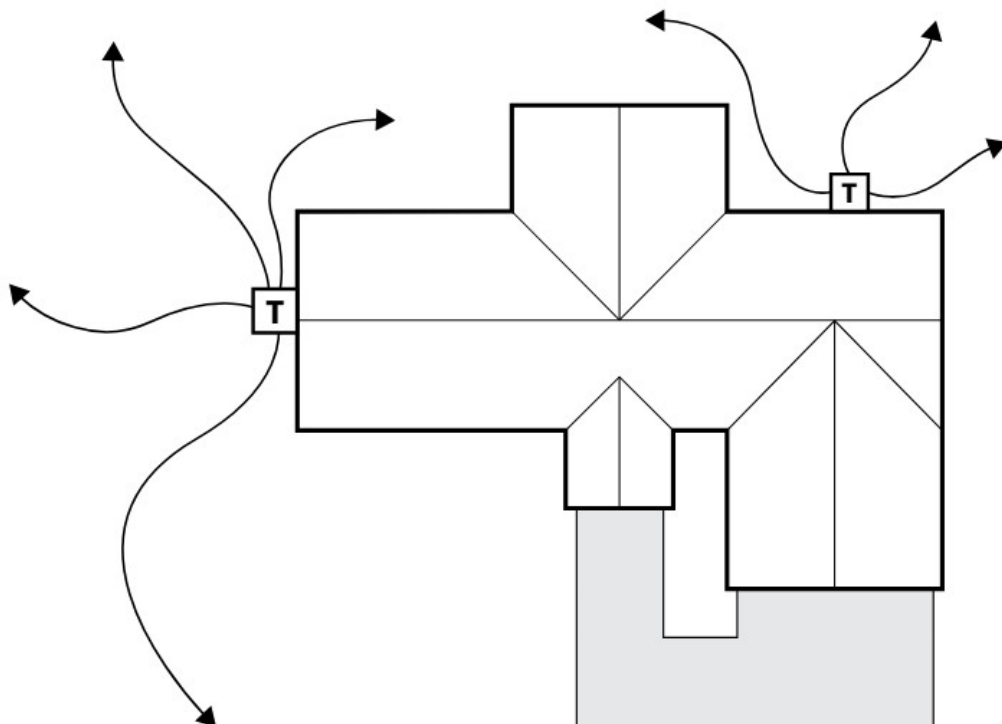


LANDSCAPE & ARCHITECTURAL LIGHTING | Learn more. Visit fxl.com

TRANSFORMERS

Single transformer: When using one transformer, center the transformer on the wattage load. Minimize all cable runs to reduce voltage drop.

Multiple transformers: When using multiple transformers, spread the load evenly across all transformers. Avoid voltage drop by installing the transformers as close to the fixtures as possible.



Please read and keep all safety and use instructions. If you have questions, contact your local distributor or visit the online support section at fxl.com/support.

WARNING – To reduce the risk of FIRE OR INJURY TO PERSON:

- Turn off/unplug and allow to cool before replacing lamp.
- Lamp gets HOT quickly. Contact only switch/plug when turning on.
- Do not touch hot lens, guard, or enclosure.
- Keep lamp away from materials that may burn.
- Do not touch the lamp at any time. Use a soft cloth.
Oil from skin may damage lamp.
- Do not operate the luminaire fitting with a missing or damaged shield.

WARNING – Risk of Electric Shock

- May be installed less than 5' (1.5 m) from a pool, spa, or fountain when used with a UL 379 listed transformer.
- A luminaire shall not use tungsten halogen lamps unless the luminaire is marked for such lamps.
- Supply connection and electrical components are located above ground level, except for secondary cord that is suitable for wet locations.

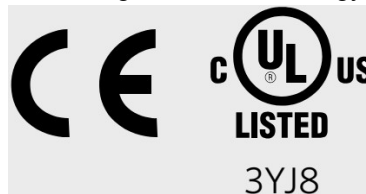
LOW-VOLTAGE CABLE SHALL:

- Be protected by routing in close proximity to the luminaire or fitting, or next to a building structure such as a house or deck.
- Not be buried except for a maximum 6" (152 mm) in order to connect to the main low-voltage cable.
- Have the length cut off so that it is connected to a connector within 6" (152 mm) from a building structure, a luminaire, or fitting.



fxl.com/support

These products contain a light source of energy efficiency class G.



CE Certified Up Lights: CC, FB, FR, LC, NP, NR, PB, QB, QZ, VS, LO, LR, MU, and RS Only

Non-CE Certified Up Lights: C-UL, C-WW, MP, RL, SI, WS, VW-31

FX-255 IN 6/23

Documents / Resources



[FX Luminaire 189106 QB LED Up Light](#) [pdf] Installation Guide
QB-ZD-1LED-BZ, 189106 QB LED Up Light, 189106, QB LED Up Light, LED Up Light, Light

References

- **[FX Luminaire | Landscape & Architectural Lighting](#)**
- **[FX Welcome to FX Luminaire Support | FX Luminaire](#)**