



# FW MURPHY BLSK1 Series Bilge Level Switch System Installation Guide

[Home](#) » [FW MURPHY](#) » FW MURPHY BLSK1 Series Bilge Level Switch System Installation Guide 

## FW MURPHY BLSK1 Series Bilge Level Switch System Installation Guide



### Contents

- [1 Installation Instructions](#)
- [2 Typical Installation and Wiring](#)
- [3 Installation](#)
- [4 How to Order](#)
- [5 Documents / Resources](#)
- [6 Related Posts](#)

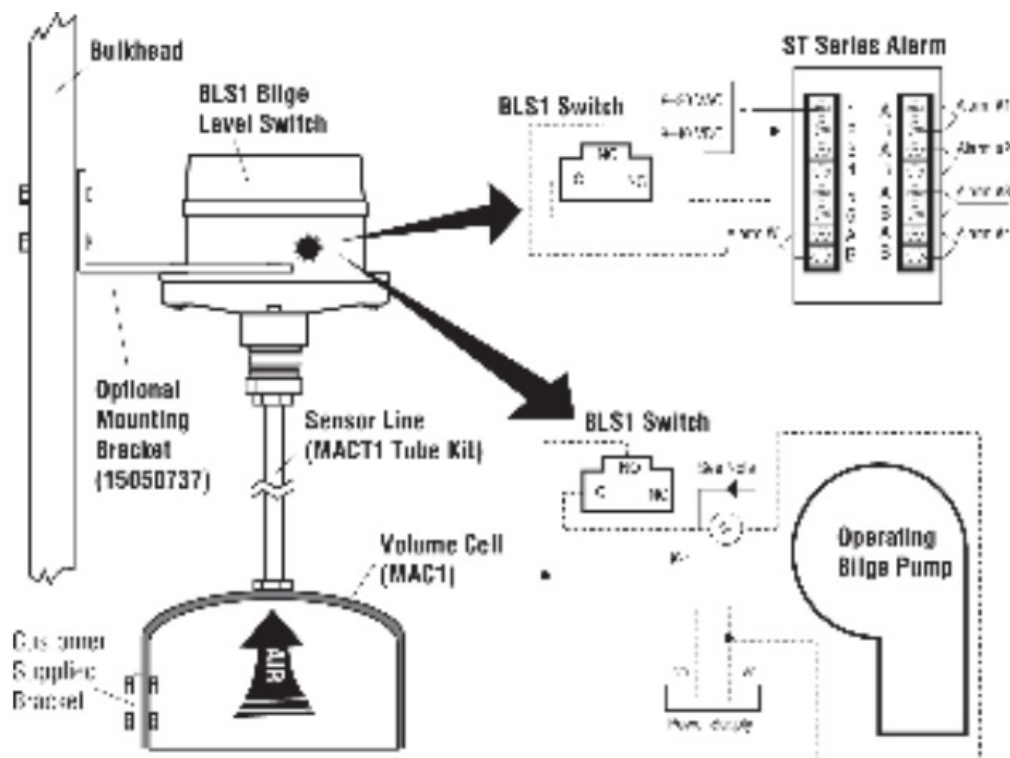
## Installation Instructions



**WARNING:** Before beginning installation of this FW Murphy product:

- Disconnect ALL electrical power to the machine.
- Make sure the machine CANNOT operate during installation.
- Follow all safety warnings of the machine manufacturer.
- Read and follow all installation instructions.

## Typical Installation and Wiring



## Installation

1. Select a mounting location in lower part of the bilge for the MAC1 air cell, but do not mount cell at this time. MAC1 must be placed so that no debris will become trapped inside it. Position the air cell approximately 1-1/2 to 2 in. (38 to 51 mm) below desired operation point and note location for attaching the cell to a stringer or bulkhead, etc. Vertical adjustment may be necessary for final calibration (see step 6).
2. Mount the BLS1 switch via optional mounting bracket 15050737 or one of your supply. Keep the BLS1 switch within 4 ft. (1.21 m) off the MAC1 air cell. Tubing must NOT have a loop or flat area for moisture to collect. Always maintain a downward slope.  
**CAUTION:** Air cell tubing and connections must remain airtight. Seal any holes placed in the air cell.
3. Attach the MACT1 tubing kit to the air cell and to the BLS1 switch. Any tubing can be used as long as it does not corrode and it provides airtight connections.
4. Wire the SPDT snap-switch according to instructions and your requirements. See typical wiring diagrams, above.
5. The BLS1 trip point is preset to operate when bilge level rises approximately 1-1/2 in. (38 mm) above the bottom of the air cell. It will reset when level falls approximately 3/4 in. (19 mm). Continued on next.  
In order to consistently bring you the highest quality, full-featured products, we reserve the right to change our specifications and designs at any time.  
FW MURPHY product names and the FW MURPHY logo are proprietary trademarks. This document, including textual matter and illustrations, is copyright  
protected with all rights reserved. (c) 2021 FW MURPHY. A copy of our typical warranty may be viewed or printed by going to [www.fwmurphy.com/warranty](http://www.fwmurphy.com/warranty).
6. Raise or lower the air cell so that the distance from the hull to the trip point level on the side of the air cell is equal to desired level of bilge. Secure the air cell via the 2 hex bolts.
7. If necessary, adjustment can be made prior to installation by placing the air cell in a bucket of water and adjusting the white knurled knob inside the BLS1 until the snap-switch actuates at the desired level. Or, build a coffer dam around the air cell in the bilge, add the desired amount of bilge water, and adjust the switch trip knob as explained above. BE SURE to remove coffer dam prior to placing the BLS1 into service.
8. Verify proper operation at desired levels prior to launch.

**NOTE:** The air cell will automatically recharge itself anytime the bilge level falls below the air cell.

**BLS1 Bilge Level Switch** Snap-Switch SPDT (standard)

5 A @ 125, 250, or 480 VAC 1/2 A @ 125 VDC, 1/4 A @ 250 VDC

**NOTE:** A pilot relay may be used for higher contact ratings (see Typical Wiring Diagram)

**Case/Lid:** Aluminum (std)

**Bottom Plate:** Glass-filled nylon

**Process Connection:** 1/4 NPTF

**Max. Pressure:** 25 psi (172 kPa) [1.72 bar] **Conduit Connection (electrical):** 1/2 NPT

**BLS1 Weight:** 3 lb. (1.4 kg)

**BLS1 Dimensions:** 6-1/4 x 6-1/4 x 6-1/4 in. (159 x 159 x 159 mm)

**15050737 Optional mounting bracket:** 16 ga., 304 stainless steel (see Dimensions)

**MACT1 Tube Kit (fittings included):** 4 ft. (1.21 m) flexible non-corrosive tubing, 1/4 in. (6 mm) dia. (cut to fit)

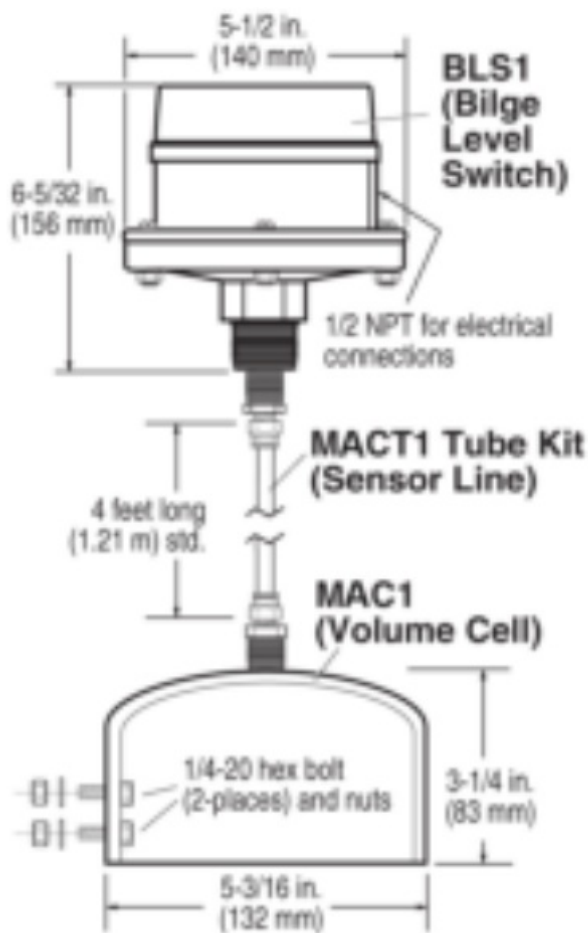
**MACT1 Weight:** 0.5 lb. (0.23 kg)

**MACT1 Dimensions:** 6 x 6 x 6 in. (152 x 152 x 152 mm)

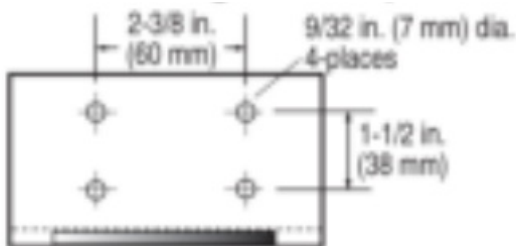
**MAC1 Air Cell (Volume Cell):** Made of non-corrosive materials (2) 1/4-20 stainless steel hex bolts and nuts

**MAC1 Weight:** 2 lb. (1 kg)

**MAC1 Dimensions:** 6 x 6 x 6 in. (152 x 152 x 152 mm)



Optional Mounting Bracket (15050737)



## How to Order

Part Number	Model and Description	Notes
15000587	BLS1: Bilge level switch	SPDT, 5A Switch, aluminum case and lid
15700193	BLSK1: Bilge level switch kit includes BLS1, MACT1 tubing kit and MAC1 air cell	Kit
15050737	BLS1 mounting bracket	Accessories and replacement parts
15010205	5 A snap-switch and movement assembly	
15000123	Diaphragm assembly	
15050823	Piston	
15050824	Knob for limit adjustment	
15700200	MACT1	
15000590	MAC1	

**FW MURPHY PRODUCTION CONTROLS**  
SALES, SERVICES & ACCOUNTING 4646 S. HARVARD AVE.  
TULSA, OK 74135

**MANUFACTURING**  
2151 RANDON DYER ROAD ROSENBERG, TX 77471  
5757 FARINON DRIVE SAN ANTONIO, TX 78249

**DOMESTIC SALES & SUPPORT**

FW MURPHY PRODUCTS

**PHONE:** 918 957 1000

**EMAIL:** [INFO@FWMURPHY.COM](mailto:INFO@FWMURPHY.COM)

[WWW.FWMURPHY.COM](http://WWW.FWMURPHY.COM)

FW MURPHY CONTROL SYSTEMS & SERVICES

**PHONE:** 281 633 4500

**EMAIL:** [CSS-SOLUTIONS@FWMURPHY.COM](mailto:CSS-SOLUTIONS@FWMURPHY.COM)

**INTERNATIONAL SALES & SUPPORT CHINA**

**PHONE:** +86 571 8788 6060

**EMAIL:** [INTERNATIONAL@FWMURPHY.COM](mailto:INTERNATIONAL@FWMURPHY.COM)

LATIN AMERICA & CARIBBEAN

**PHONE:** +1918 770 8775

**EMAIL:** [INTERNATIONAL@FWMURPHY.COM](mailto:INTERNATIONAL@FWMURPHY.COM)

SOUTH KOREA

**PHONE:** +82 70 7951 4100

**EMAIL:** [INTERNATIONAL@FWMURPHY.COM](mailto:INTERNATIONAL@FWMURPHY.COM)



FM 668576 (San Antonio, TX – USA) FM 668933 (Rosenberg, TX – USA)

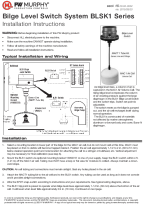



FM 523851 (China)

TS 589322 (China)



**FW MURPHY<sup>®</sup>**  
P R O D U C T I O N   C O N T R O L S

	<p><a href="#">FW MURPHY BLSK1 Series Bilge Level Switch System</a> [pdf] Installation Guide</p> <p>BLSK1, BLSK1 Series Bilge Level Switch System, Bilge Level Switch System, Level Switch System, Switch System, System</p>
	<p><a href="#">FW MURPHY BLSK1 Series Bilge Level Switch System</a> [pdf] Instruction Manual</p> <p>BLS1, BLSK1, 15000587, 15700193, 15050737, 15010205, 15000123, 15050823, 15050824, 15700200, 15000590, BLSK1 Series Bilge Level Switch System, Bilge Level Switch System, Level Switch System, Switch System, System</p>