

FVTLED Mini Wifi LED Controller



FVTLED Mini Wifi LED Controller Instruction Manual

[Home](#) » [FVTLED](#) » FVTLED Mini Wifi LED Controller Instruction Manual 

Contents

- 1 FVTLED Mini Wifi LED Controller
- 2 FAQ
- 3 Product Parameter
- 4 Wire Connection
- 5 Connection schematic diagram
- 6 How to reset the factory setting
- 7 Download FVTLED APP
- 8 Documents / Resources
 - 8.1 References

FVTLED

FVTLED Mini Wifi LED Controller



Product Specifications

- **Category:** LED Controller
- **Operation Platform:** FVTLED App
- **Channels:** 3
- **Input Voltage:** DC 12-24V
- **Max Output Power:** 100W
- **Working Temperature:** -20°C to +55°C
- **Control Distance:** Visible distance 30m
- **Certification:** CE, RoHS, FCC
- **Net Weight:** 33.5g
- **Dimensions (L*W*H):** 53mm x 24mm x 11mm
- **Carton Size (L*W*H):** 50cm x 25cm x 21cm

Wire Connection

The connection between the controller and the power supply must be made correctly to avoid short circuits. Ensure the arrows on the controller match those on the device.

Key Instruction

- **ON/OFF:** Power control
- **Night Light Mode:** Activates night light mode
- **Color Temperature (+):** Increase warmth level
- **Brightness (+):** Increase brightness level
- **Color Temperature (-):** Increase cold light level
- **Brightness (-):** Decrease brightness level

- **RGB Color Cycle Mode:** Three-speed RGB color cycle

FVTLED App Usage Instructions

1. Download the FVTLED App from the App Store or Google Play Store, or scan the QR code provided.
2. Login or register your FVTLED account.
3. In the app, tap “Add Device” or click on the plus sign to add the controller. Select your Wi-Fi network (works only with 2.4GHz networks) and enter the password.
4. You can modify the device name and select the room after successfully connecting to the Wi-Fi network.

How to Reset to Factory Settings?

1. Before resetting, ensure the device is powered on.
2. To reset, turn on the light, then turn it off three times in quick succession. Keep the light off for 5 seconds after the third turn-off.

FAQ

Q: How do I connect the controller to a Wi-Fi network?

A: Register/log in to your FVTLED account, then follow the steps in the FVTLED app to connect to your Wi-Fi network.

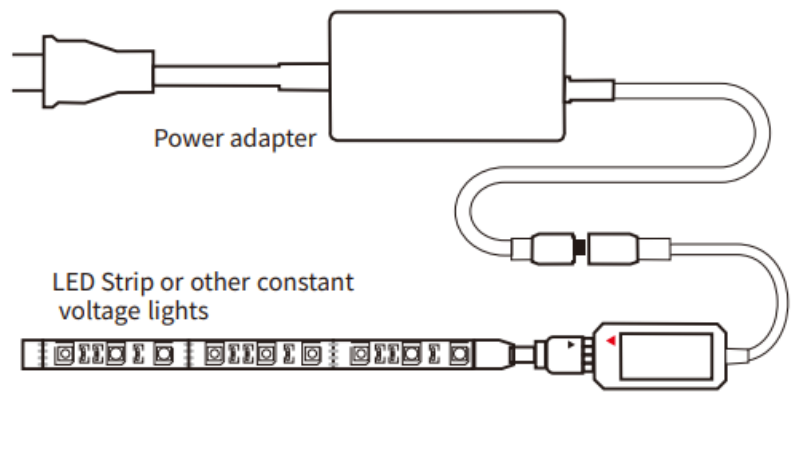
Q: Where can I find more information about the product?

A: Scan the instruction QR code for the electronic manual or visit the APP FAQ section for more details.

Product Parameter

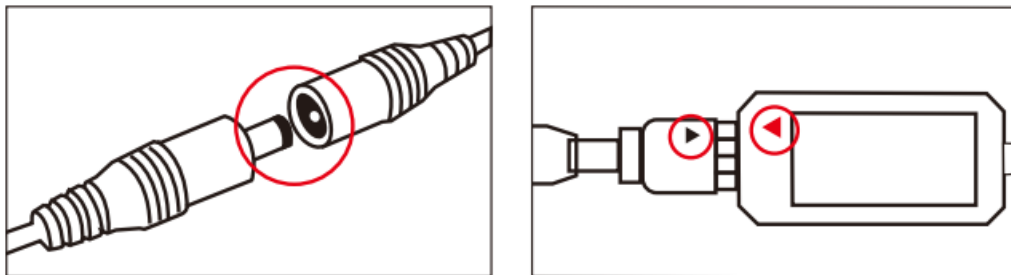
- Category: LED Controller
- Domination Principle: WiFi
- APP: FVTLED
- Operation Platform: Android 7.0or IOS 12.3 or later
- Channels: GRB/RGBW
- Input Voltage: DC(12-24)V
- Max Output Power: 100W
- Working Temperature: -20~+55°C
- Control Distance: Visible distance 30M
- Certification: CE, RoHS, FCC
- Net Weight: 33.5g
- Dimension(L*B*H): 53MM*24MM*11MM
- Carton Size(L*B*H): 50CM*25CM*21CM

Wire Connection



Connection schematic diagram

- The connection between the controller and the power supply
- Controller and device connection

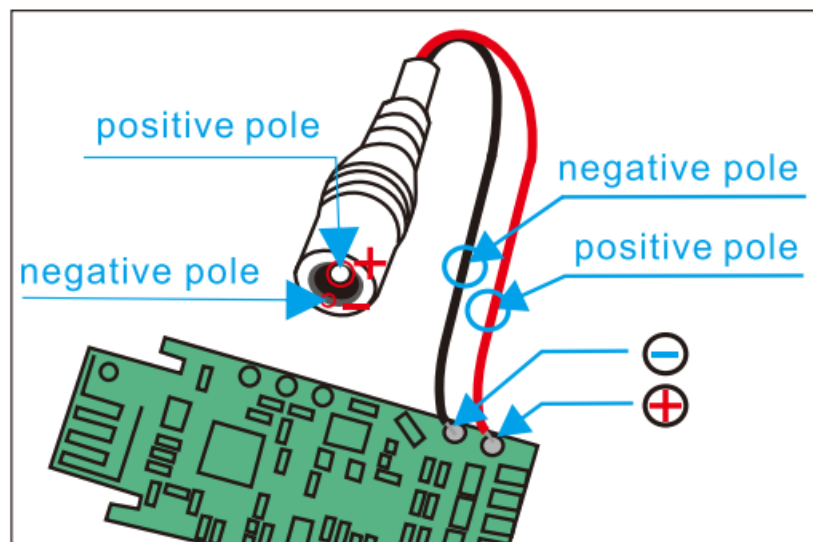


Notice:

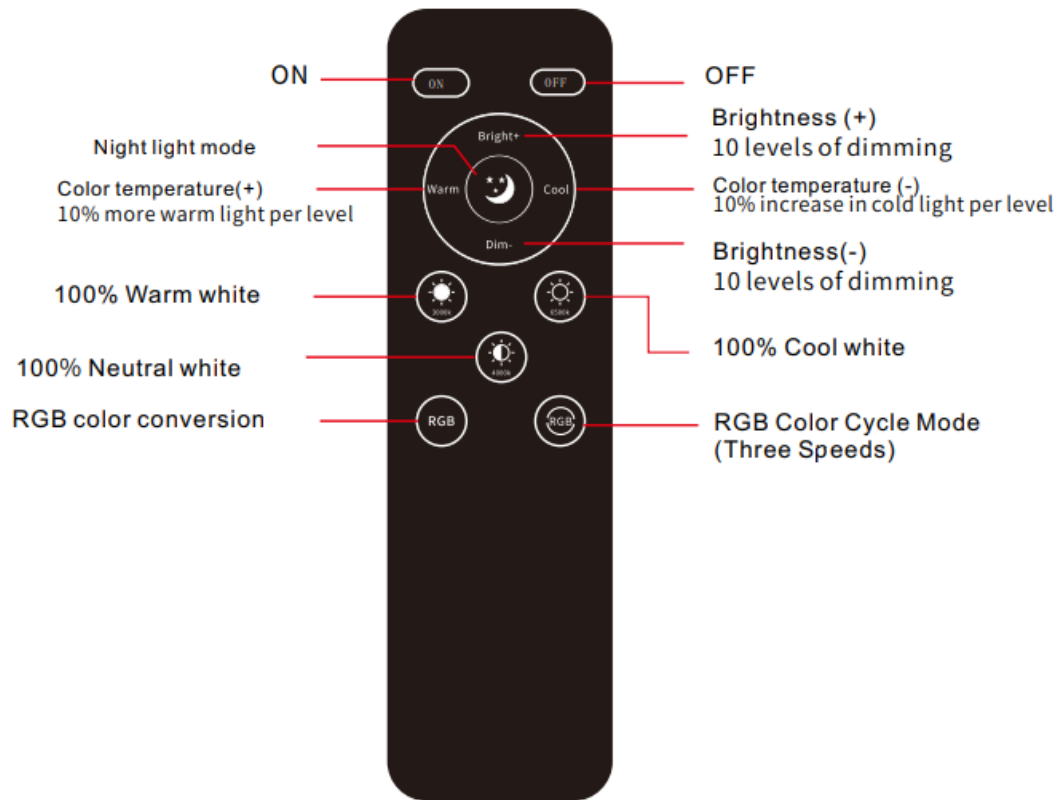
It is necessary to ensure that the red arrow of the controller corresponds to the black arrow of the device end otherwise the the device will have a short circuit.

Important Notice

If you need to make DIY modifications to the device, please contact our customer service and operate under their guidance. Precautions Please follow the diagram instruction when doing DIY modifications

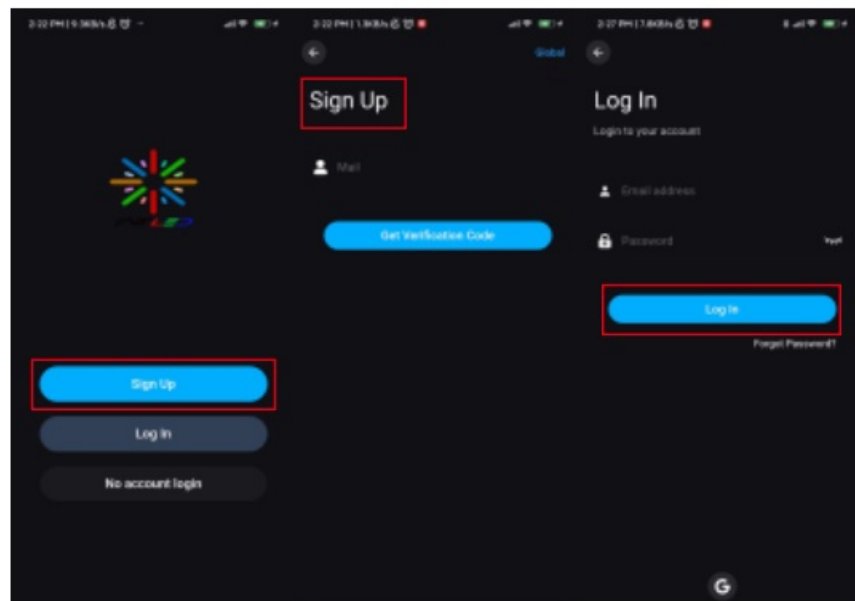


Key Instruction

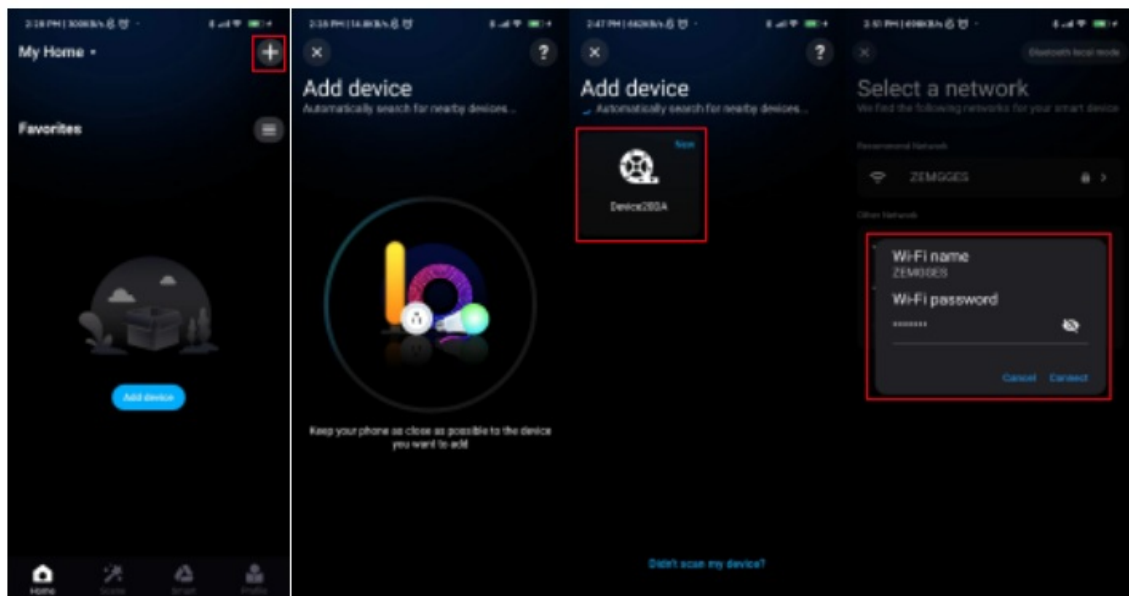


How to connect the controller to Wi-Fi network

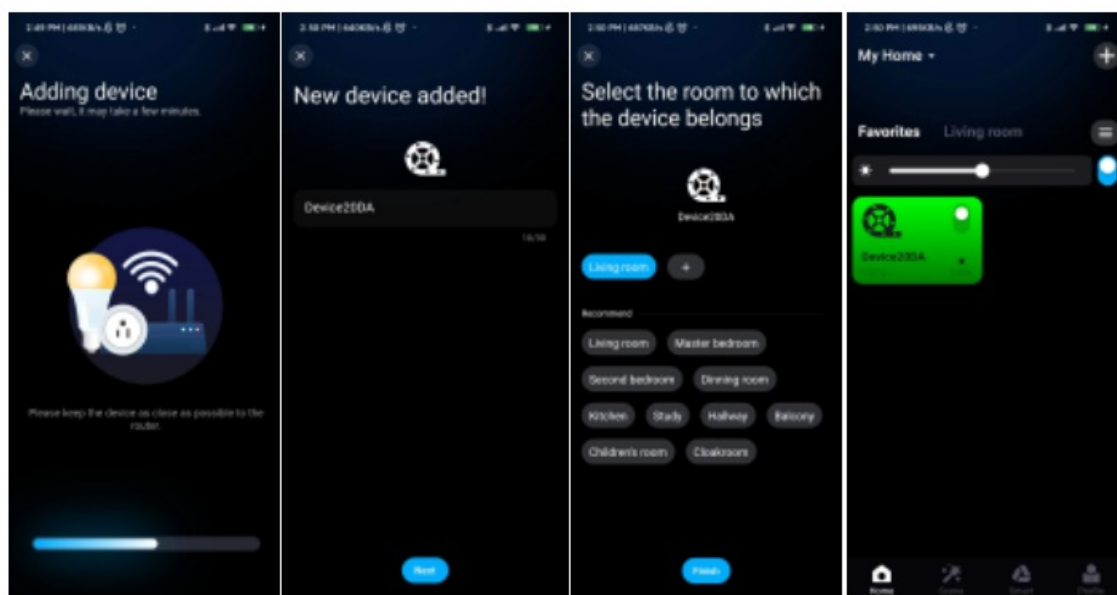
1. Register/Login your FVTLED account.



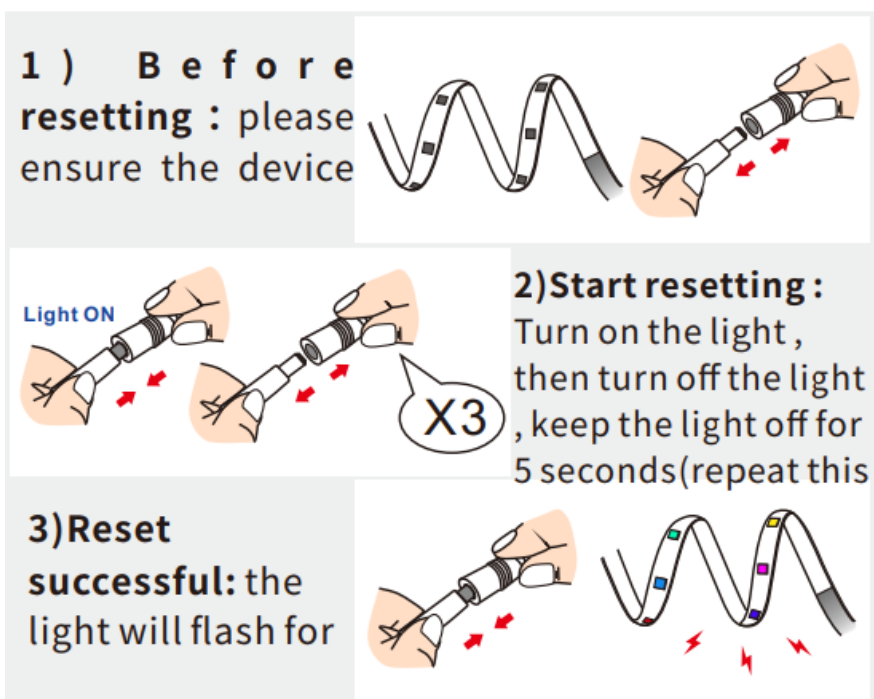
2. Open your phone Bluetooth, turn on the device.
3. Enter“ FVTLED ” app, tap“ Add Device” or click“ +” to add the device. Then select your Wi-Fi network(Only work with 2.4Ghz network), enter the password



4. The device name can be modified and select the room after successfully connecting to Wi-Fi network



How to reset the factory setting



Download FVTLED APP

Download“ FVTLED ” APP from App store and Google Play Store, or scan the QR code.



FVTLED APP

FAQ

Scan the ” Instruction ” QR code to read the electronic manual Or enter the APP FAQ to learn more




RGB



RGBW

Documents / Resources

	<p>FVTLED Mini Wifi LED Controller [pdf] Instruction Manual</p> <p>Mini Wifi LED Controller, Mini, Wifi LED Controller, LED Controller, Controller</p>
-------------------------------------------------------------------------------------	------------------------------------------------------------------------------------------------------------------------------------------------------------------------

References

- [User Manual](#)

[Manuals+](#), [Privacy Policy](#)

This website is an independent publication and is neither affiliated with nor endorsed by any of the trademark owners. The "Bluetooth®" word mark and logos are registered trademarks owned by Bluetooth SIG, Inc. The "Wi-Fi®" word mark and logos are registered trademarks owned by the Wi-Fi Alliance. Any use of these marks on this website does not imply any affiliation with or endorsement.