



FVC SP1103B Sprinter Side Steps 170 Installation Guide

[Home](#) » [FVC](#) » FVC SP1103B Sprinter Side Steps 170 Installation Guide 

Contents

1 Installation Guide

1.1 Sprinter Side Steps 170SP1103B

1.2 THANK YOU!

1.3 TOOLS

1.4 PACKAGE CONTENTS

1.5 HARDWARE

1.6 LET'S GET STARTED!

1.7 GET OUT AND EXPLORE!

2 Documents / Resources

3 Related Posts



All Flatline Van Co products must be properly assembled and secured before attaching to your vehicle. Improper attachment could result in an automobile accident, and could cause serious bodily injury or death to you or to others involved. You are responsible for assembling and securing Flatline Van Co products to your vehicle, checking the mounting points and attachments prior to use, and regularly inspecting the products for wear and or damage. We always recommend you use a professional to install any aftermarket accessories to your vehicle. If you have no mechanical experience and are not thoroughly familiar with the installation procedures, you must have the product installed by a professional installer or other qualified persons. The responsibility is yours and must be taken seriously for everyone's safety.



thanks.

THANK YOU!

ARE YOU EXCITED ABOUT YOUR NEW SIDE STEPS? HERE ARE A FEW THINGS TO DO BEFORE BEGINNING THE INSTALLATION PROCESS–

- PLEASE INSPECT THE PRODUCT TO ENSURE THERE WAS NO DAMAGE INCURRED DURING SHIPPING.
- IF THERE IS DAMAGE TO REPORT, PLEASE CONTACT OUR CUSTOMER SERVICE DEPARTMENT AS SOON AS POSSIBLE.
- NEXT, USING THE “PACKAGE CONTENTS” PAGE, CHECK INVENTORY AND FAMILIARIZE YOURSELF WITH THE PARTS AND HARDWARE.
- GATHER ALL TOOLS REQUIRED FOR INSTALL.
 - IMPACT DRIVER
 - 3/8 DRIVER BIT
 - POWER DRILL
 - 3/16 DRILL BIT
 - 17/32 DRILL BIT
 - 7/32 ALLEN KEY
 - 5/32 ALLEN KEY
 - RIVET NUT TOOL WITH 3/8-16 MANDREL
 - 9/16 SOCKET
 - RATCHET
 - BLUE LOCTITE

ESTIMATED INSTALL TIME- 2 HRS

ADDITIONAL HELP IS SUGGESTED FOR A FEW OF THE INSTALL STEPS.

TOOLS



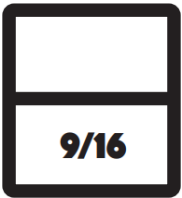
7/32 ALLEN KEY



5/32 ALLEN KEY

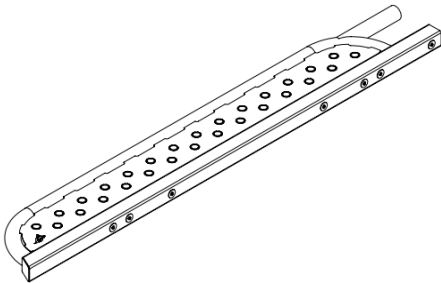


RATCHET



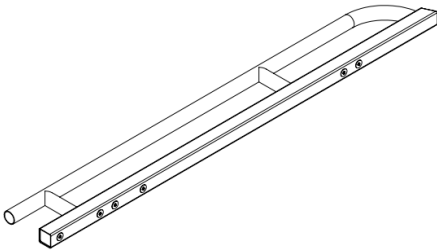
9/16 SHALLOW SOCKET

PACKAGE CONTENTS



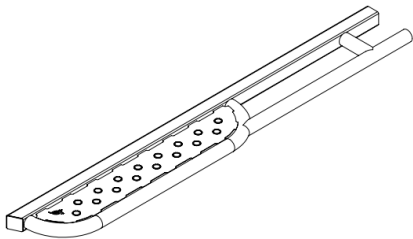
PASSENGER STEP
WELDMENT – FRONT

QTY – 1

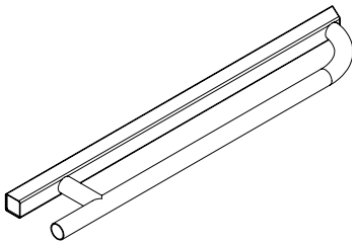


PASSENGER STEP
WELDMENT – REAR

QTY – 1

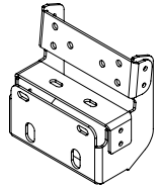


DRIVER STEP
WELDMENT – FRONT



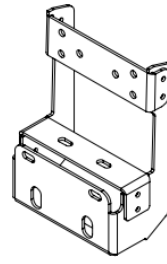
DRIVER STEP
WELDMENT – REAR

QTY – 1



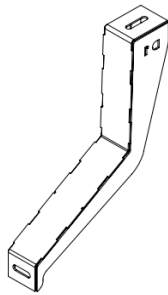
SHORT HANGER BRACKET

QTY – 1



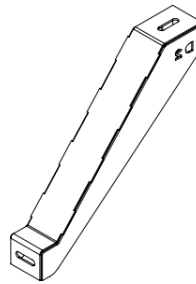
TALL HANGER BRACKET

QTY – 5



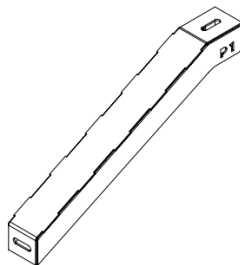
DRIVER SIDE BRACE D1

QTY – 3



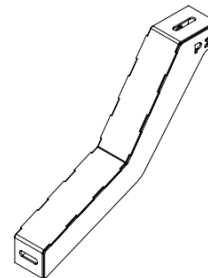
DRIVER SIDE BRACE D2

QTY – 1



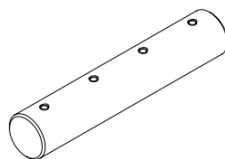
PASSENGER SIDE
BRACE P1

QTY – 2



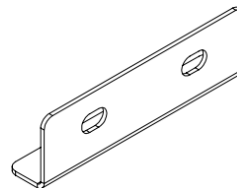
PASSENGER SIDE
BRACE P2

QTY – 1



BAYONET

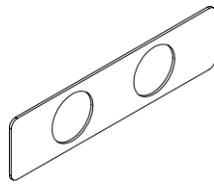
QTY – 2



JOINING BRACKET

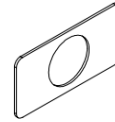
QTY – 2

QTY – 2



BRACKET SPACER DOUBLE

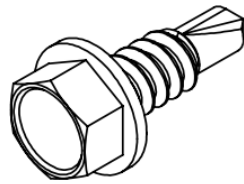
QTY – 8



BRACKET SPACER SINGLE

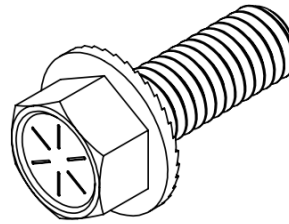
QTY – 6

HARDWARE



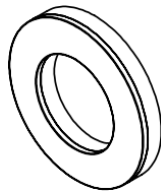
1/4 X 0.75 HEX HEAD
DRILLING SCREW

QTY – 80



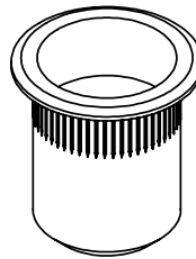
3/8-16 X 1 SERRATED
FLANGED HEX HEAD SCREW

QTY – 32



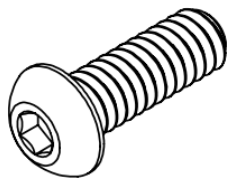
3/8 SCREW BONDED
SEALING WASHER

QTY – 14



3/8-16 X 0.027-0.15 HEAVY
DUTY RIVET NUT

QTY – 6



1/4-20 X 0.75 BUTTON
HEAD HEX DRIVE
SCREW

QTY – 8



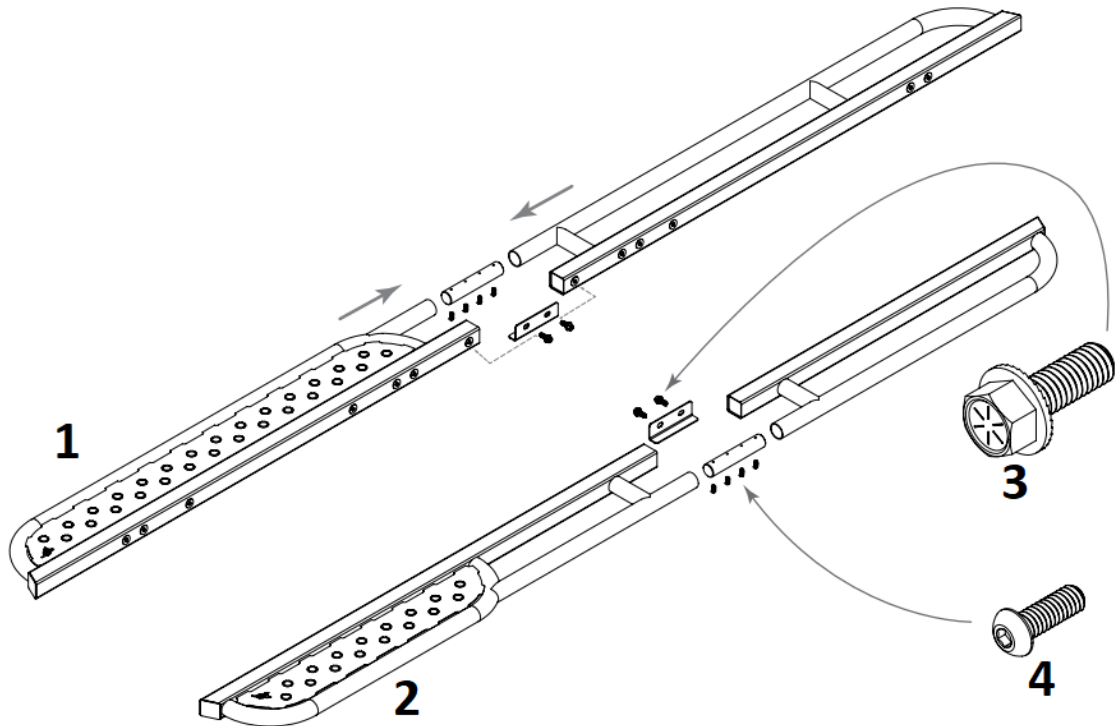
3/8-16 X 0.75 BUTTON
HEAD HEX DRIVE
SCREW

QTY – 14

LET'S GET STARTED!

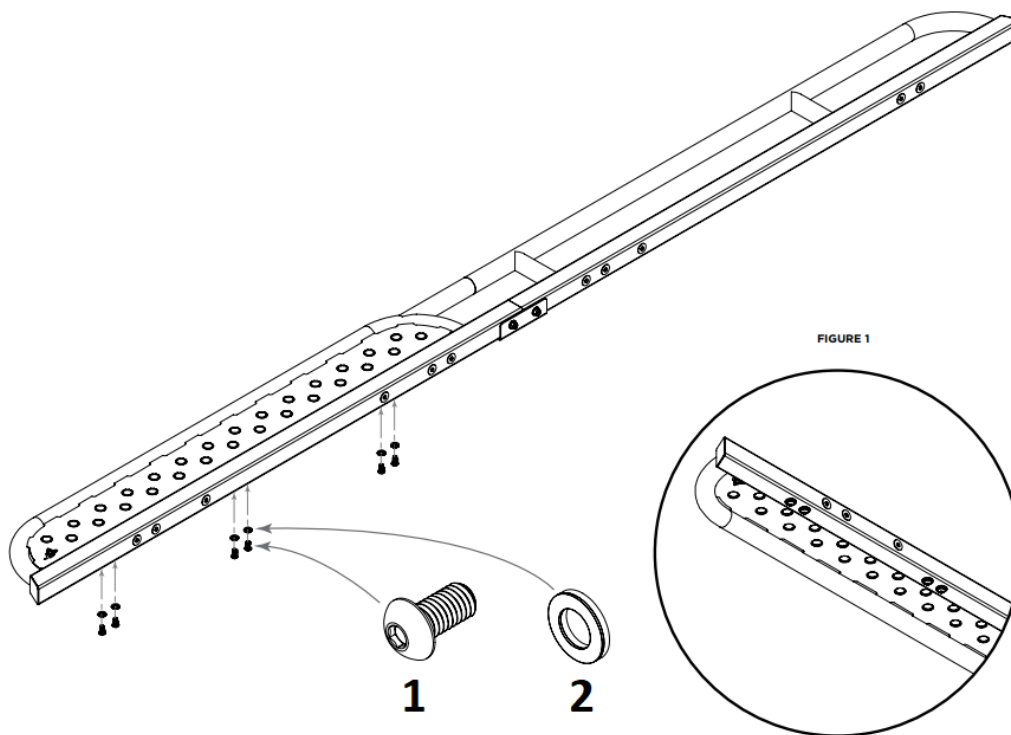
1. THE FIRST STEP IS TO ASSEMBLE THE SIDE STEPS. START WITH ONE SIDE, GRABBING BOTH RESPECTIVE WELDMENTS AND SLIDE A **BAYONET** INTO THE REAR WELDMENT. APPLY BLUE LOCTITE AND LOOSELY THREAD IN TWO **1/4-20 X 0.75 BUTTON HEAD HEX DRIVE SCREWS** TO HOLD THE **BAYONET** IN PLACE, THEN SLIDE THE WELDMENT TOGETHER AS SHOWN IN THE DIAGRAM. THREAD THE OTHER TWO SCREWS INTO THE **BAYONET**, THEN ATTACH THE **JOINING BRACKET** WITH TWO **3/8-16 X 1 SERRATED FLANGED HEX HEAD SCREWS**; THESE SHOULD HAVE BLUE LOCTITE APPLIED AS WELL. TIGHTEN ALL HARDWARE AND REPEAT FOR THE OTHER SIDE.

NOTE- THE JOINING BRACKET IS USED TO HELP WITH ALIGNMENT OF THE TWO WELDMENTS AND CAN BE CLAMPED IN PLACE WHILE TIGHTENING TO ENSURE ALIGNMENT.



1. PASSENGER SIDE
2. DRIVER SIDE
3. 3/8-16 X 1 SERRATED
FLANGED HEX HEAD
SCREW
4. 1/4-20 X 0.75 BUTTON
HEAD HEX DRIVE
SCREW

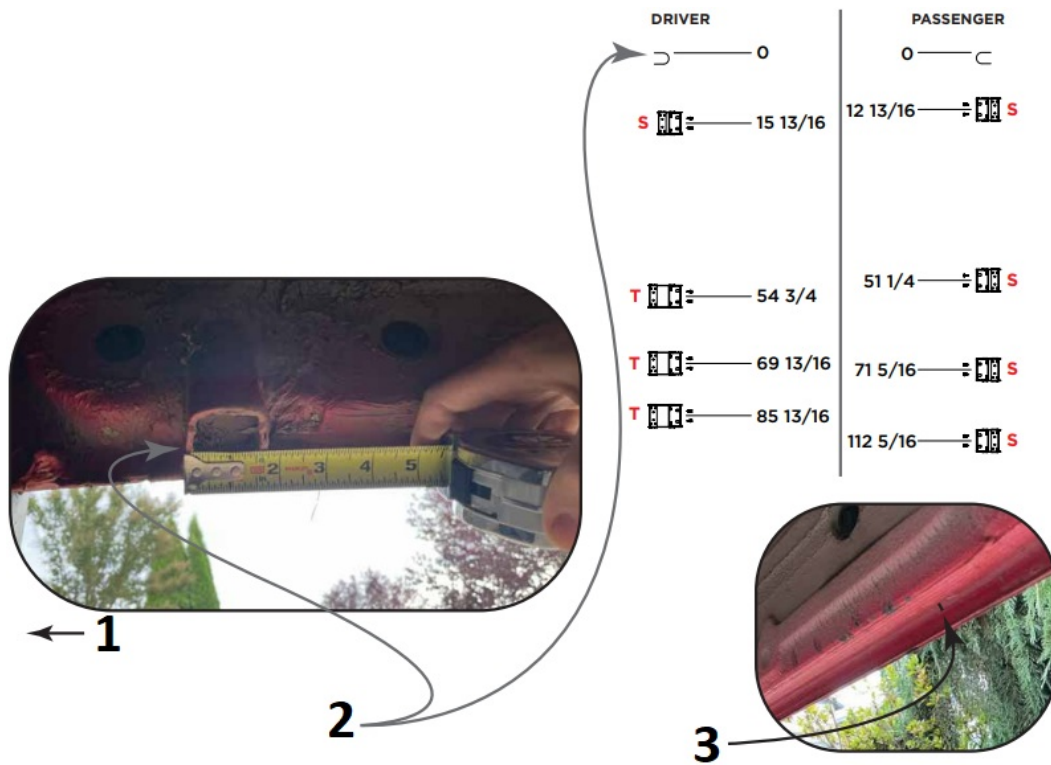
2. NEXT, WE NEED INSTALL THE **3/8-16 X 0.75 BUTTON HEAD HEX DRIVE SCREWS** AND **3/8 SCREW BONDED SEALING WASHERS** IN THE THREAD HOLES ON THE BOTTOM SIDE OF THE FRONT STEP WELDMENTS TO SEAL THEM FROM WATER AND THE ELEMENTS. THESE SCREWS SHOULD HAVE BLUE LOCTITE APPLIED ON THEM. SEE THE DIAGRAM AND **FIGURE 1** FOR DETAIL.



1. 3/8-16 X 0.75 BUTTON
HEAD HEX DRIVE
SCREW
2. 3/8 SCREW BONDED
SEALING WASHER

3A. NOW WE MOVE ON TO MOUNTING THE **HANGAR BRACKETS**. FIRST, WE NEED TO MARK THE LOCATIONS TO MOUNT THEM. USING THE FRONT JACK POINT AS OUR REFERENCE, LAYOUT THE BRACKET LOCATIONS USING THE DIAGRAM ON THE RIGHT. NOTE THAT THESE DIMENSIONS ARE **CENTERLINE** DIMENSIONS. PLEASE NOTE THE LABELS NEXT TO THE BRACKETS IN THE DIAGRAM; THE SHORT BRACKETS ARE LABELED **S** AND THE TALL ARE LABELED **T**. THE TWO TALL BRACKETS GO TO THE REAR OF THE VAN ON THE DRIVER SIDE AS SHOWN.

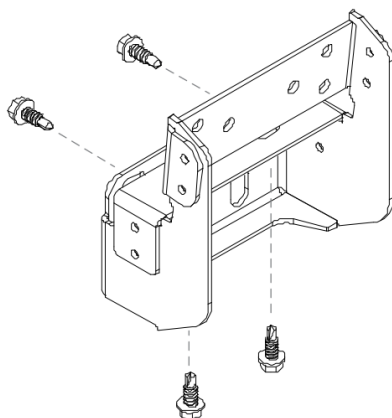
NOTE- ENSURE YOUR MARKS ARE ACCURATE. THERE IS A SMALL AMOUNT OF ADJUSTMENT BUILT INTO THE BRACKET MOUNT HOLES FOR TOLERANCE. LABELING YOUR MARKS FOR THE BRACKET TYPE AS YOU GO IS A GOOD WAY TO AVOID PLACING THE WRONG BRACKET IN THE WRONG LOCATION.

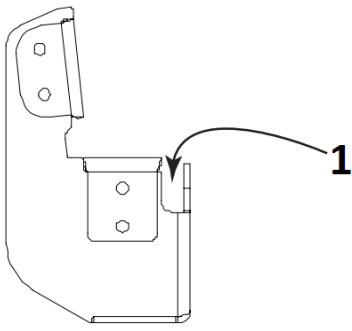


1. FRONT OF VAN
2. REFERENCE POINT (ZERO)
3. MAKE MARK IN CORNER OF PINCH SEAM

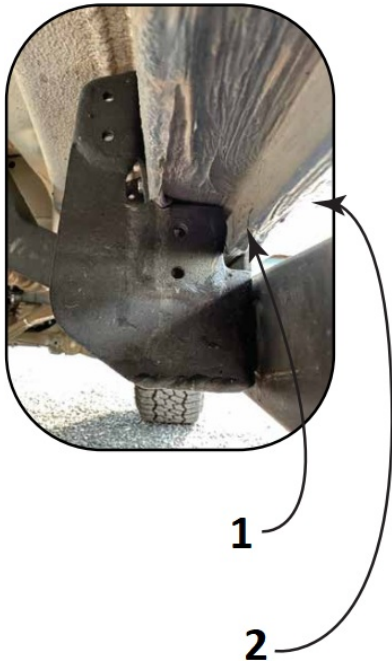
3B. THE HANGER BRACKETS ARE DESIGNED TO STRADDLE THE PINCH SEAM OF THE VAN. INSERT THEM IN PLACE ACCORDING TO THE PLACEMENT DIAGRAM ON THE PREVIOUS PAGE, AND THEN DRIVE IN FOUR 1/4 X 0.75 HEX HEAD DRILLING SCREWS IN THE LOCATIONS SHOWN. WE RECOMMEND DRILLING PILOT HOLES FOR THE SCREWS THAT GO THROUGH THE PINCH SEAM.

NOTE- THE FOUR MOUNTING HOLES USED IN THIS STEP ARE SLOTTED TO ALLOW FOR A SMALL AMOUNT OF LATERAL ADJUSTMENT IF NECESSARY.





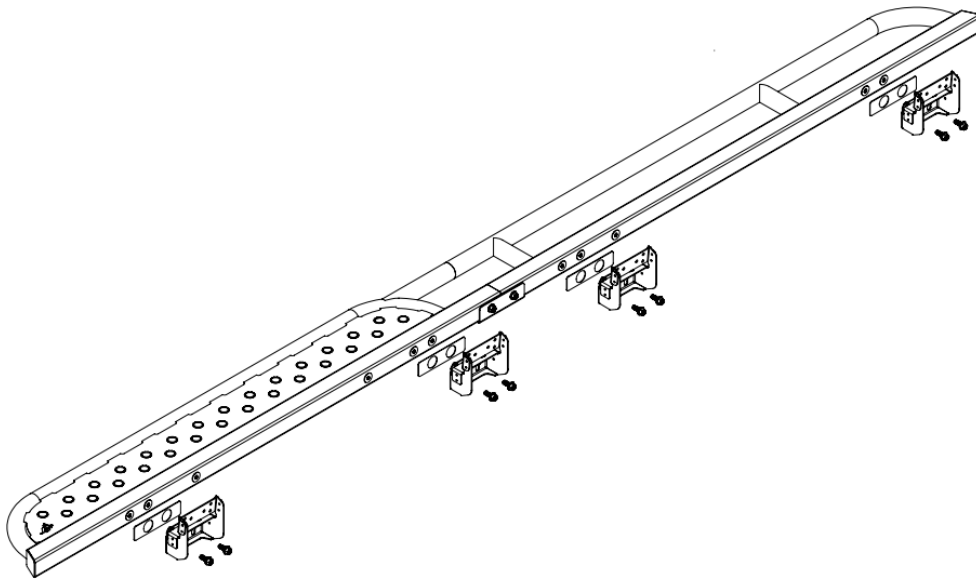
1. PINCH SEAM RESTS HERE



1. PINCH SEAM OF VAN
2. DRILL FROM OUTSIDE OF VAN

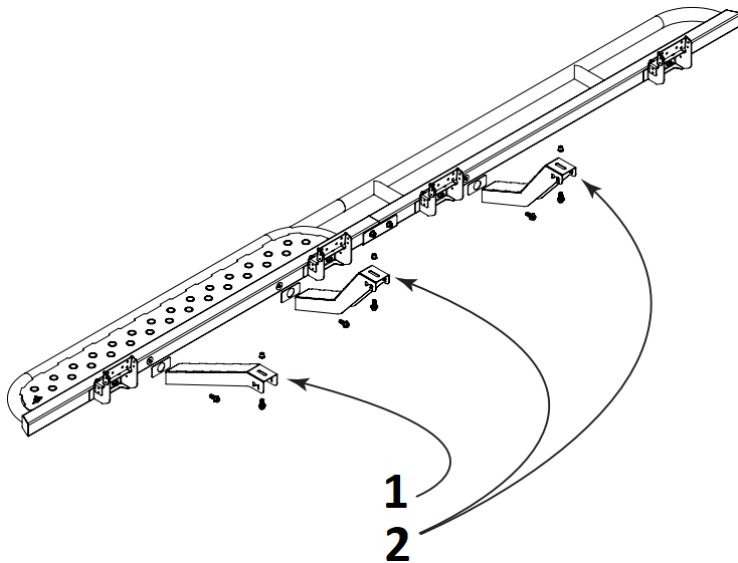
4. NOW YOU WILL ATTACH THE **SIDE STEP ASSEMBLIES** TO THE **HANGER BRACKETS** (PASSENGER SIDE SHOWN). YOU WILL NEED TO SANDWICH A **BRACKET SPACER** (DOUBLE) BETWEEN EACH **HANGER BRACKET** AND THE **SIDE STEP** AS SHOWN BELOW. THESE HELP INCREASE STIFFNESS OF THE STEP DURING USE. APPLY BLUE LOCTITE TO ALL OF THE **3/8-16 X 1 SERRATED FLANGED HEX HEAD SCREWS** AND TIGHTEN THEM DOWN. REPEAT FOR OTHER SIDE.

NOTE- IT IS VERY HELPFUL TO EITHER HAVE A SECOND PERSON HELP YOU HOLD THE STEP IN PLACE, OR USE A FLOOR JACK. THE SIDE STEPS ARE HEAVY AND CAN BE DIFFICULT TO HOLD STEADY BY YOURSELF.

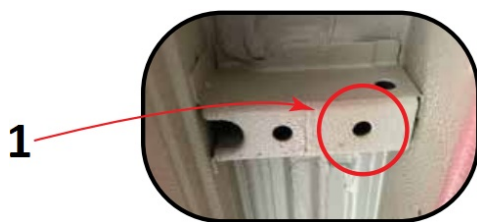


5A. STARTING ON THE **PASSENGER SIDE**, INSTALL **3/8-16 RIVET NUTS** INTO THE BODY NEXT. THE LOCATIONS ARE CIRCLED IN THE IMAGE TO THE RIGHT. IT IS ALWAYS A GOOD IDEA TO DOUBLE CHECK YOUR RIVET NUTS ONCE INSTALLED TO ENSURE THEY DO NOT FALL OUT OR SPIN.

5B. ONCE YOU'VE INSTALLED THE RIVET NUTS, YOU CAN ATTACH THE **PASSENGER SIDE BRACES**. THERE ARE TWO STYLES; **P1 & P2**. REFER TO THE DIAGRAM BELOW FOR LOCATIONS. SANDWICH THE **BRACKET SPACER** (SINGLE) BETWEEN EACH **BRACE** AND THE **SIDE STEP** AND ATTACH WITH **3/8-16 X 1 SERRATED FLANGED HEX HEAD SCREWS**, AGAIN APPLYING BLUE LOCTITE.



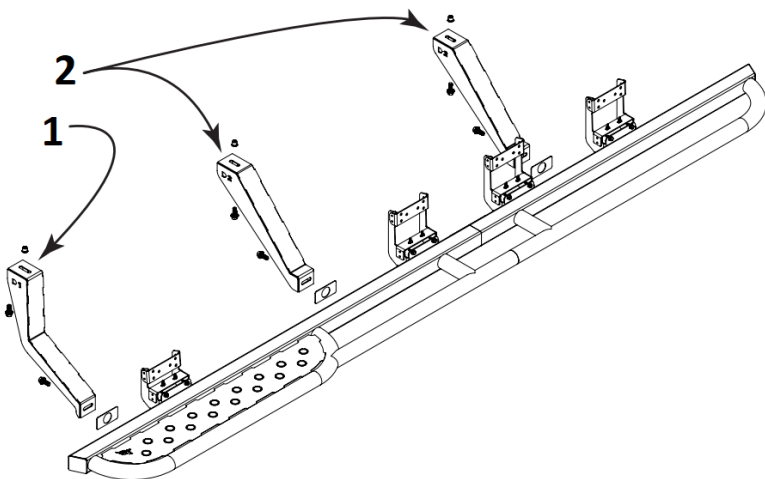
1. PASSENGER SIDE BRACE P1
2. PASSENGER SIDE BRACE P2



1. INBOARD HOLE FOR RIVET NUT

6A. THE DRIVER SIDE REQUIRES YOU TO DRILL HOLES TO INSTALL THE RIVET NUTS. BOLT UP YOUR **BRACES** AS SHOWN IN THE DIAGRAM AND MARK YOUR HOLE LOCATIONS ON THE BODY STRUCTURE BEAMS CIRCLED IN THE IMAGES. MAKE SURE YOUR BRACES ARE FITTED CORRECTLY AND SIT AS FLAT AS POSSIBLE, THEN MARK YOUR HOLE IN THE CENTER OF THE MOUNTING SLOT. REMOVE THE **BRACES** AND DRILL A PILOT HOLE IN EACH WITH THE **3/16"** **BIT**, THEN DRILL OUT WITH THE **17/32"** **BIT**. CLEAN HOLES (RUST PREVENTATIVE PAINT IS RECOMMENDED) AND INSTALL YOUR **RIVET NUTS**.

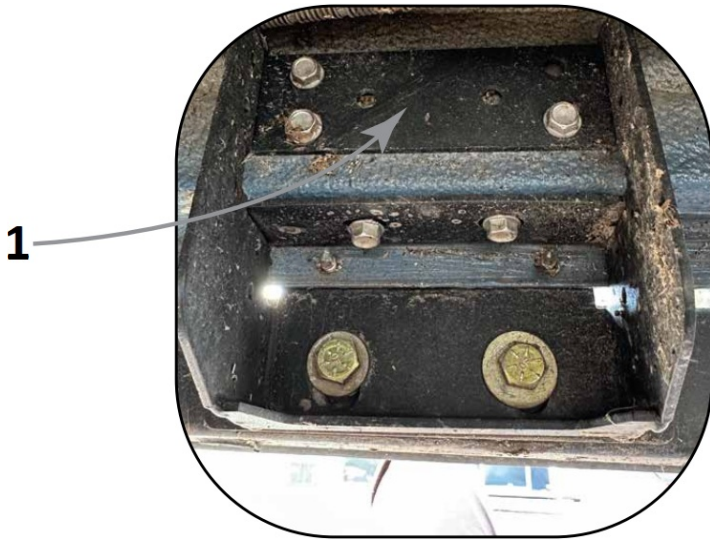
6B. ONCE YOU'VE INSTALLED THE RIVET NUTS, YOU CAN ATTACH THE **DRIVER SIDE BRACES**. THERE ARE TWO STYLES; **D1** & **D2**. REFER TO THE DIAGRAM BELOW FOR LOCATIONS. SANDWICH THE **BRACKET SPACER** (SINGLE) BETWEEN EACH **BRACE** AND THE **SIDE STEP** AND ATTACH WITH **3/8-16 X 1 SERRATED FLANGED HEX HEAD SCREWS**, AGAIN APPLYING BLUE LOCTITE.



1. DRIVER SIDE BRACE D1
2. DRIVER SIDE BRACE D2

7. INSERT THE REMAINING **1/4 X 0.75 HEX HEAD DRILLING SCREWS** INTO THE UPPER PORTION OF THE HANGER BRACKETS. WE RECOMMEND AT LEAST TWO. THERE ARE 6 HOLES TO ACCOMMODATE THE UNEVEN SURFACE OF THE UNDERSIDE OF THE VAN. ENSURE YOU ARE SCREWING INTO A FLAT FACE FOR THE MOST SECURE ATTACHMENT. ONCE FINISHED, DOUBLE CHECK ALL FASTENERS ON THE

STEPS AND BRACKETS ARE TIGHT AND SECURE.



1. MULTIPLE HOLES TO ENSURE GOOD ATTACHMENT TO UNEVEN SURFACES

GET OUT AND EXPLORE!

LEAVE US A REVIEW

Happy with your new FVC product? We would love to hear (and see) from you! Head to the product page and click "Leave Review." Add a short review and upload a few photos to be showcased on the product page.

SHARE YOUR PHOTOS WITH US

We love seeing how our customers use their FVC products and following along with your adventures. Tag us in your photos with @flatlinevanco or send them to us via email. We love posting customer pictures in our feed!

CUSTOMER SUPPORT

If you are having any issues with your product, please reach out, and we will make it right. FVC is a company of van and outdoor enthusiasts that design and use our own products, so we want you to be as stoked on your new parts as we are!



@flatlinevanco



facebook.com/flatlinevanco



youtube.com/c/flatlinevanco




support@flatlinevanco.com



thanks!

Documents / Resources

	<p>FVC SP1103B Sprinter Side Steps 170 [pdf] Installation Guide</p> <p>SP1103B Sprinter Side Steps 170, SP1103B, Sprinter Side Steps 170, Side Steps 170</p>
---	--

[Manuals+](#)