



## FutureFit Ultra2 Wireless Calling Smart Watch User Guide

[Home](#) » [FutureFit](#) » FutureFit Ultra2 Wireless Calling Smart Watch User Guide 

# FutureFit

## Ultra2 Wireless Calling Smart Watch User Guide

### Contents

- 1 “GloryFit” APP  
download
- 2 Main Menu
- 3 Precautions
- 4 Documents / Resources
  - 4.1 References
- 5 Related Posts

### “GloryFit” APP download

1. Scan the QR code on the left to download the APP
2. Install the APP, please register and login according to the interface prompts

\*Compatible: IOS10.0 or above/ Andriod5.0 or above.



#### **Power ON**

Press and hold the upper button for 5 seconds to turn on

#### **Power OFF**

Press and hold the upper button for 3 seconds to turn off



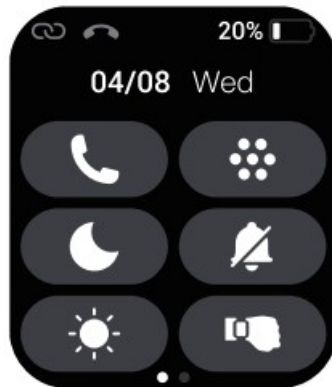
#### **Set up and pair**

1. Turn ON the Bluetooth in your smartphone
2. Open the GloryFit, go "Device", "+ Add a new device"
3. Search Bluetooth device & Select the "FutureFit Ultra2" for binding



#### **On home screen**

1. Swipe down to enter the main menu
2. Swipe up to enter the messages
3. Swipe left to enter activity data
4. Swipe right to split screen view



## Main Menu

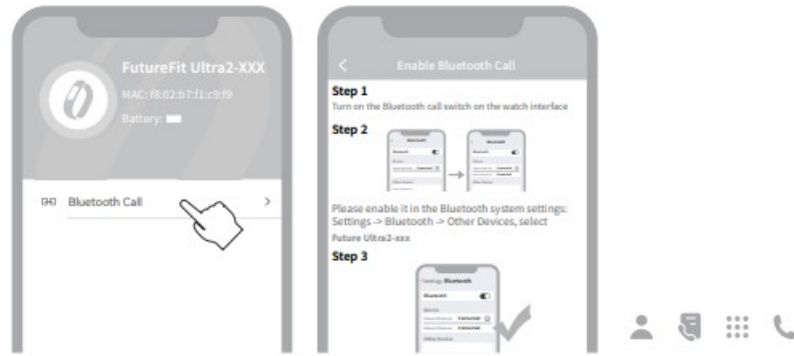
- Phone call
- Sub menu style
- Do not disturb
- Mute
- Brightness
- Raise wrist setting
- Search
- Torch
- Battery
- Settings
- ...



## Sub-Menu

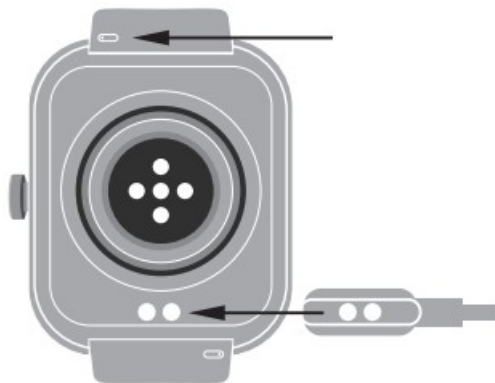
1. Exercise data can view steps, distance, calories The phone's information will be synced to the watch
2. Health monitoring: heartrate, blood oxygen, sleep

Enjoy more on FutureFit Ultra2 .....



## Phone Calls

1. Ensure the Ultra2 is connecting with & nearby your phone within 10 meters .
2. ENABLE the Call functions.
3. Go call settings in the Gloryfit APP.



## Replace the strap

Slide the spring pin and hold it to remove the watch strap, Then connect the watch strap that needs to be replaced to the watch.

## Charging

To charge the watch, place the watch flat and make sure that the back of the two metal holes are aligned with the metal tip of the charging head.

## Product parameter

- Waterproof rating: IP68 Waterproof
- Sensor: 3 axis G-Sensor
- Battery capacity: 300mAh
- Synchronization method: Bluetooth
- Resolution: 240\* 280 pixels
- Display screen: 1.85 inch IPS Display
- Working time: about 7-25 days
- Working temperature: -10C~50°C
- Compatible system: IOS 10.0 or above, Android 5.0 or above

## Packing list

- FutureFit Ultra2 Watch x 1
- Charging Cable x 1

- Quick Start Guide x 1

## Regulatory Information

To view regulatory information please go to Settings>About-Regulatory Information

### Note

**Please read the instructions before use:**

- The company reserves the right to modify the content of this notice without notice. According to normal circumstances, some functions are different in specific software versions.
- The product should be charged for more than 2 hours before use, but avoid prolonged charging in an unmanned environment when charging.
- Please attach the magnetic charging cable to the charging port of the bracelet automatically.
- Please use the input voltage: 5V/1A or 5V/2A charging head, with the original charging cable provided by the manufacturer.
- Before using the product, please download the login application to the mobile phone, which can use the wristband time to set personal information.

## Precautions

Please read this manual first to ensure safe and correct use.

- The data of this product is for health management reference only. Please do not use it as medical data. If any abnormal body data is found it should be subject to hospital testing.
- The waterproof rating of the watch is IP68 Waterproof.

You can use it normally in life situations such as handwashing, raining, etc. Please do not put the watch in hot water do not perform operations such as underwater pressing or deep diving, and do not expose the watch to corrosion liquid to prevent damage to the watch.









<https://app.help-document.com/gloryfit/download/index.html>

## Documentation & Help

Need help or more information? Please scan QR code.

You can also visit GloryFit APP for frequently asked questions.

       	1.85 inch IPS Display
	IP68 Waterproof
	Heart Rate
	Blood Oxygen Monitoring
	Bluetooth Calling
	Up to 7 Days Daily Use
	Alarm
	Notifications Sync



<http://www.hifuturegroup.com/>

Makes Life More Valuable  
Made by ShenZhen Future Access Technology Co.,Limited



[www.hifuturegroup.com](http://www.hifuturegroup.com)

Designed in USA, Assembled in China  
SHENZHEN FUTURE ACCESS TECHNOLOGY CO.,LIMITED.Explore more at [www.hifuturegroup.com](http://www.hifuturegroup.com) © All Rights Reserved

---

## Documents / Resources

FutureFit Ultra2 <small>QUICK START GUIDE</small>	<a href="#">FutureFit Ultra2 Wireless Calling Smart Watch</a> [pdf] User Guide Ultra2 Wireless Calling Smart Watch, Ultra2, Wireless Calling Smart Watch, Calling Smart Watch, Smart Watch, Watch
--	--

## References

-  [Home | HiFuture Group](#)
- [User Manual](#)

[Manuals+](#), [Privacy Policy](#)