



# FUTEK SENSIT Test and Measurement Software Installation Guide

[Home](#) » [FUTEK](#) » FUTEK SENSIT Test and Measurement Software Installation Guide 

## Contents

- [1 FUTEK SENSIT Test and Measurement Software](#)
- [2 Installation Overview](#)
- [3 Operating Systems](#)
- [4 Prerequisites](#)
- [5 Prerequisite Setup Wizard](#)
- [6 Installing Microsoft .NET Framework](#)
- [7 Installing FTDI D2XX Direct Drivers](#)
- [8 Extracting FTDI CDM Drivers](#)
- [9 Device Driver Installation Wizard](#)
- [10 License Agreement](#)
- [11 SENSIT Test and Measurement Setup Wizard](#)
- [12 End-User License Agreement](#)
- [13 Select Installation Folder](#)
- [14 Ready to Install](#)
- [15 Completing the SENSIT Setup Wizard](#)
- [16 Release Information](#)
- [17 Documents / Resources](#)
  - [17.1 References](#)
- [18 Related Posts](#)



**FUTEK SENSIT Test and Measurement Software**



## Installation Overview

This installation guide outlines all the necessary steps to install SENSIT Test and Measurement.

## Operating Systems

SENSIT Test and Measurement is intended for use with one of the following Windows operating systems.

- Windows 10 x64
- Windows 10 x86
- Windows 8.1 x64
- Windows 8.1 x86
- Windows 7 x64
- Windows 7 x86

## Prerequisites

SENSIT Test and Measurement requires the following prerequisites to be installed. The installation wizard will automatically prompt the user to install the prerequisites if they are not already installed.

### Microsoft .NET Framework 4.8 or higher

Microsoft .NET Framework 4.8 can be downloaded from the manufacturer's website.

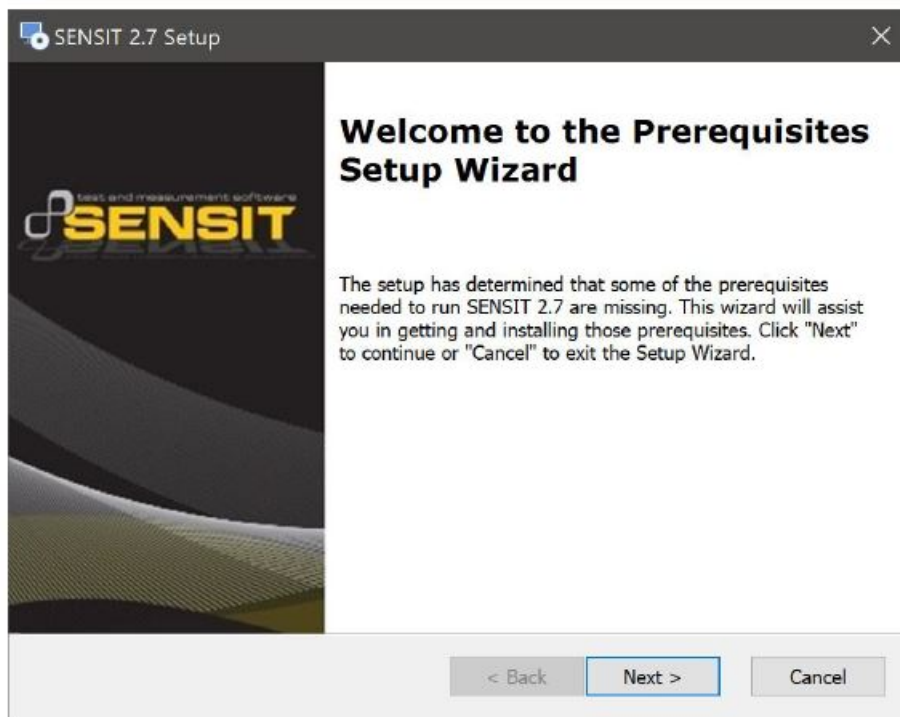
<https://dotnet.microsoft.com/download/dotnet-framework/net48>

### FTDI D2XX Direct Drivers 2.12.36.4 or higher

FTDI D2XX Direct Drivers 2.12.36.4 can be downloaded from the manufacturer's website.  
<https://ftdichip.com/drivers/d2xx-drivers/>

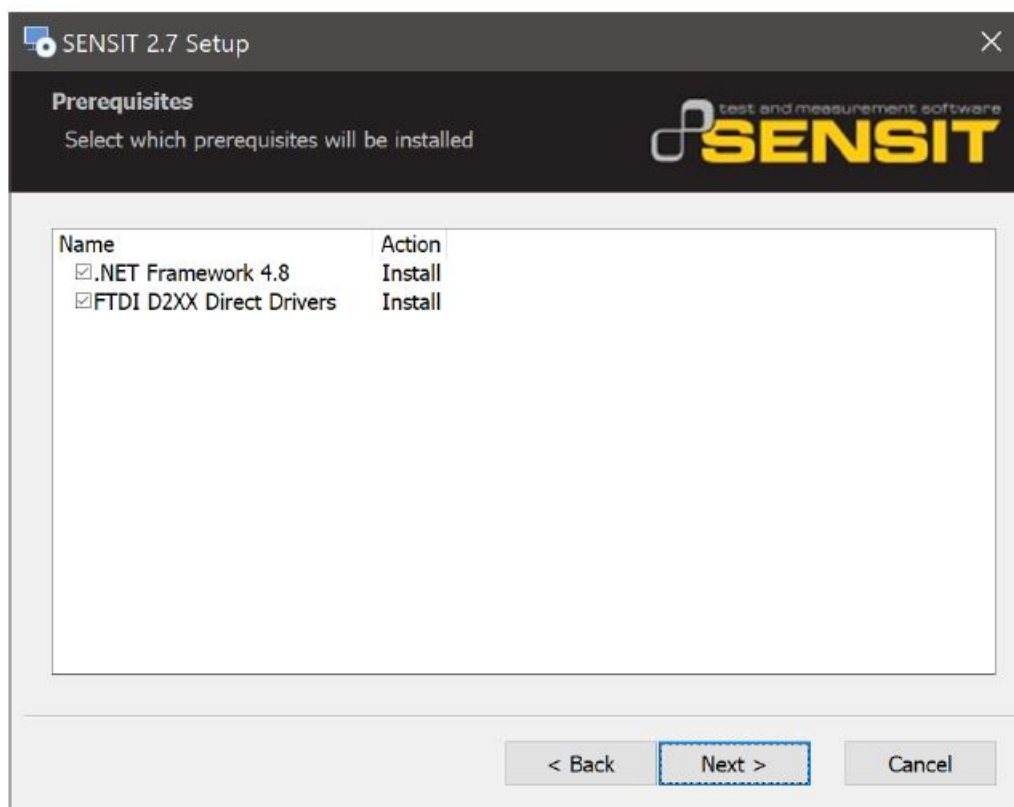
## Prerequisite Setup Wizard

Click Next to continue.



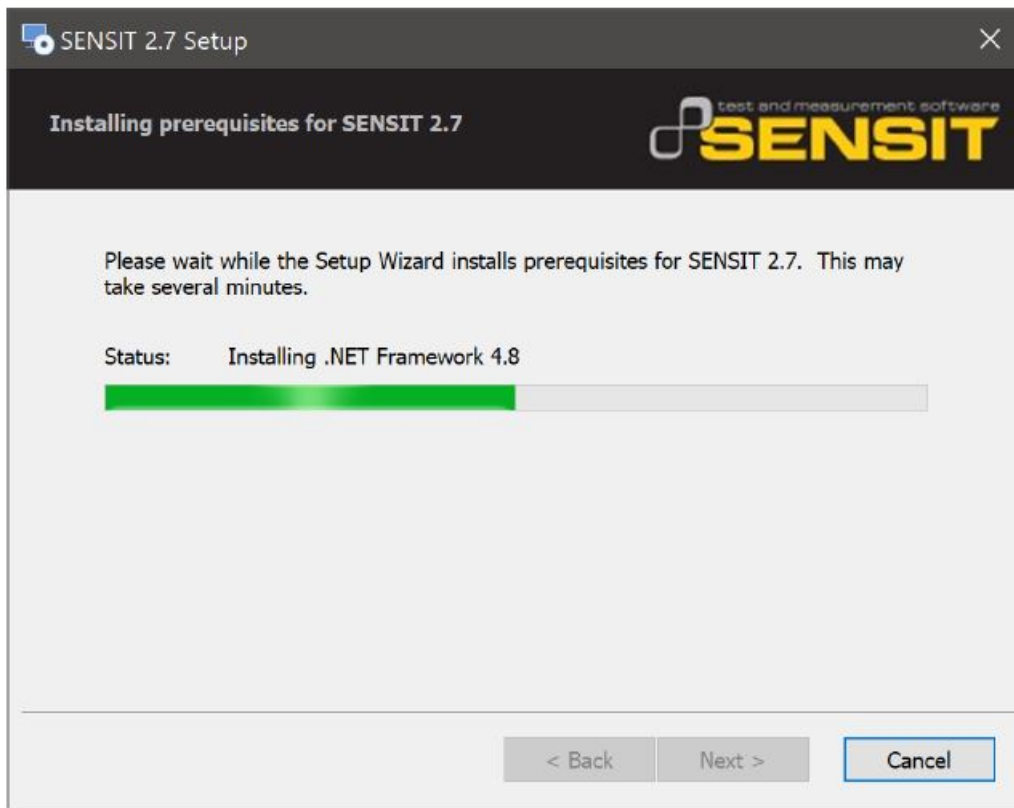
## Prerequisites

Select all the prerequisites. Click Next to continue.



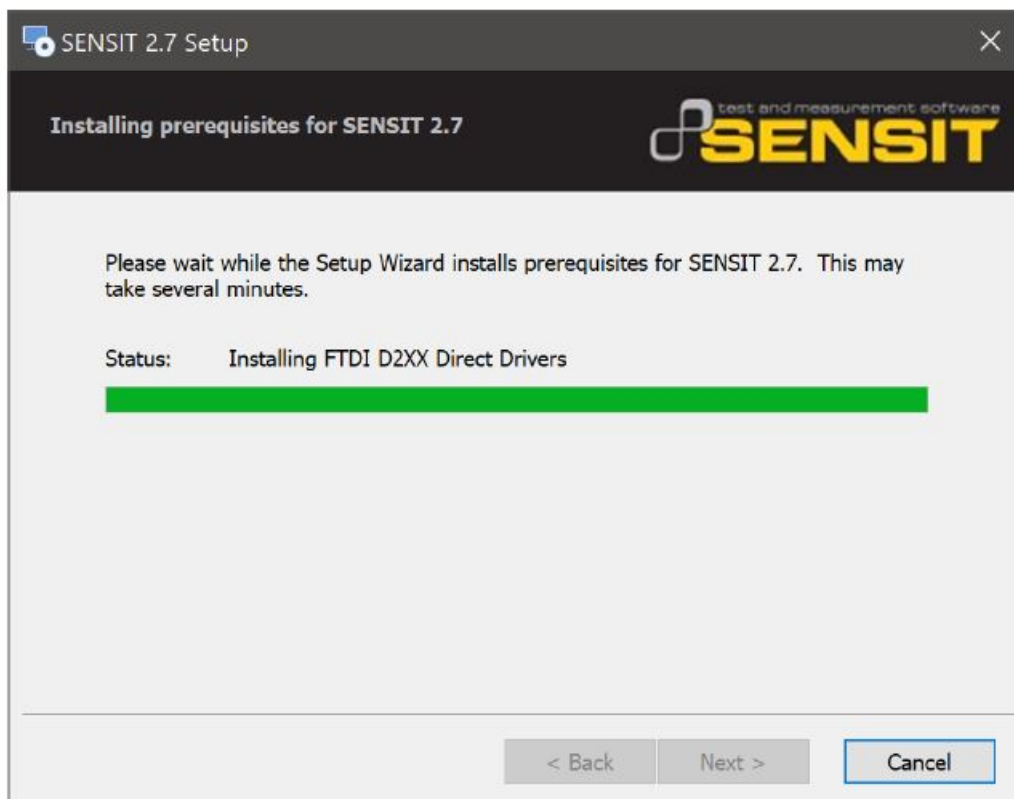
## Installing Microsoft .NET Framework

Microsoft .NET Framework will be installed.



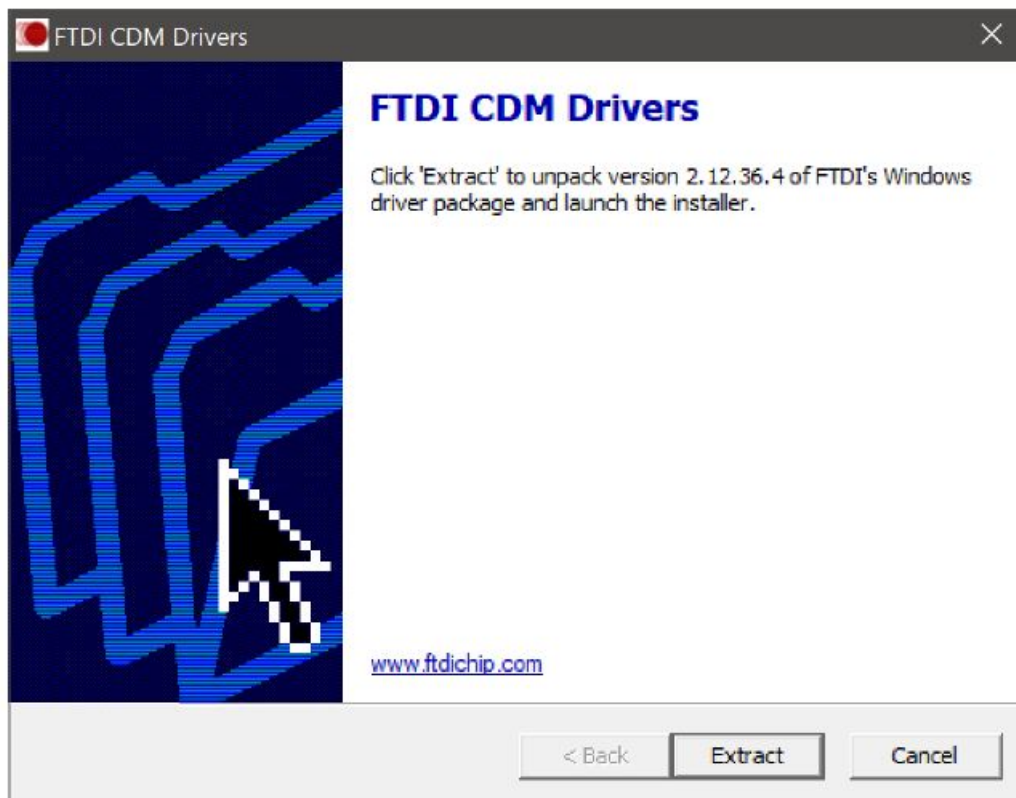
## Installing FTDI D2XX Direct Drivers

FTDI D2XX Direct Drivers will be installed.



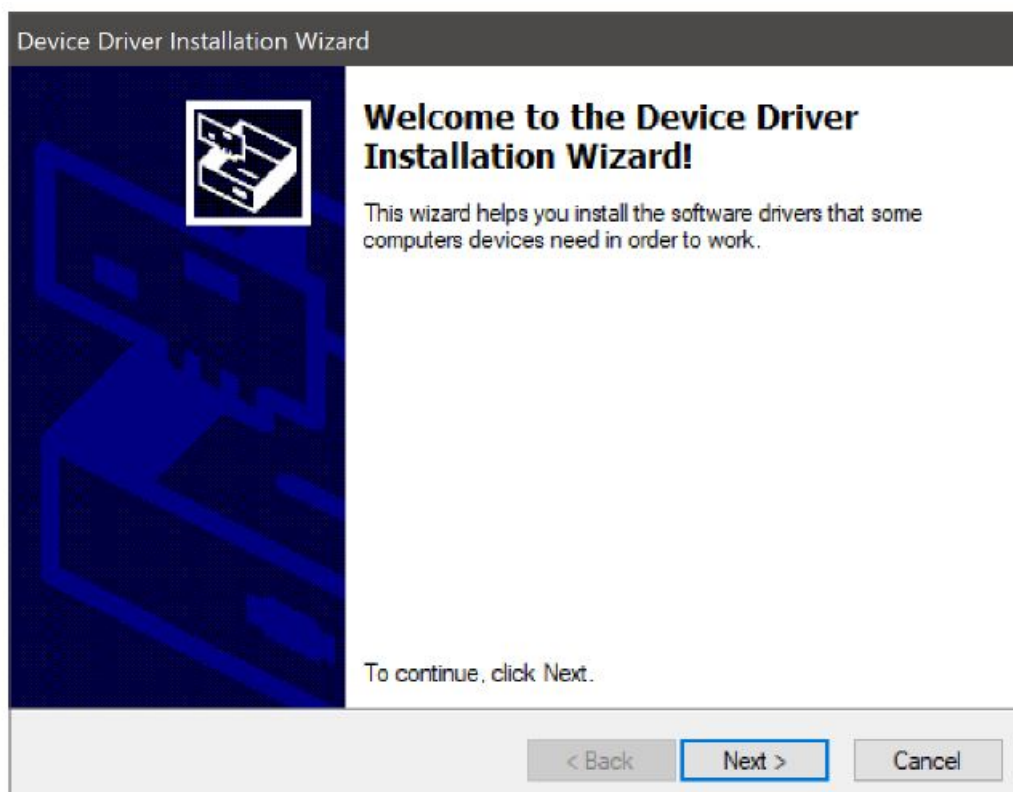
## Extracting FTDI CDM Drivers

The FTDI CDM Drivers dialog will appear. Click Extract.



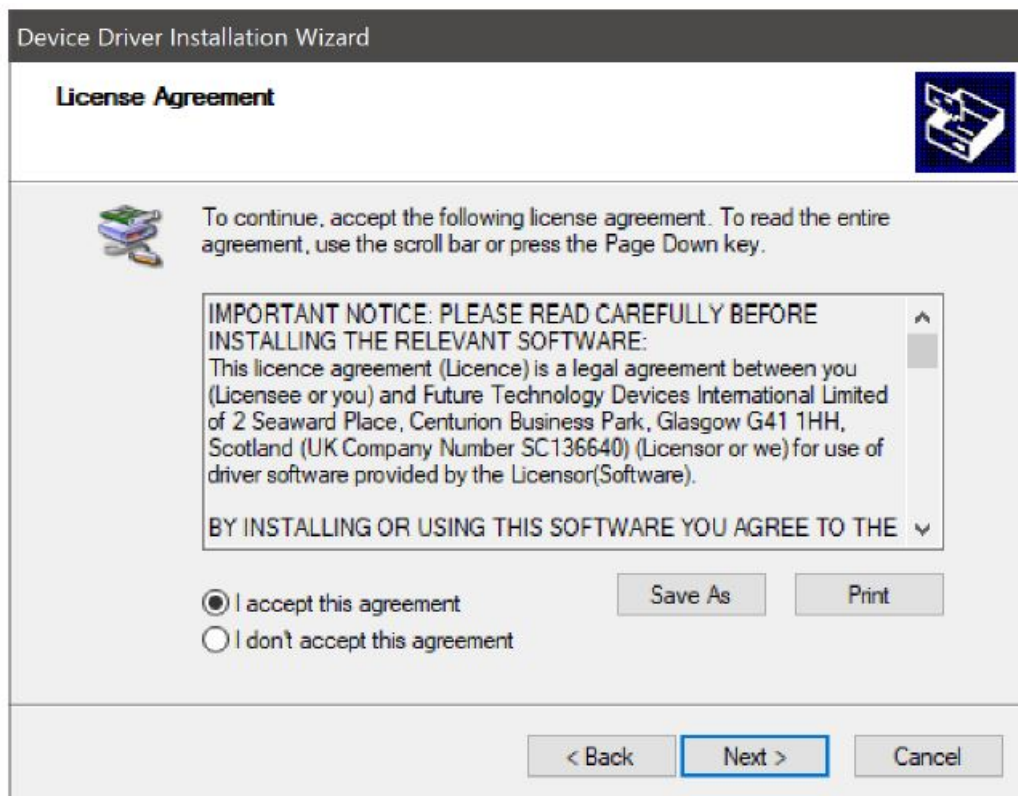
## Device Driver Installation Wizard

Click Next to continue.

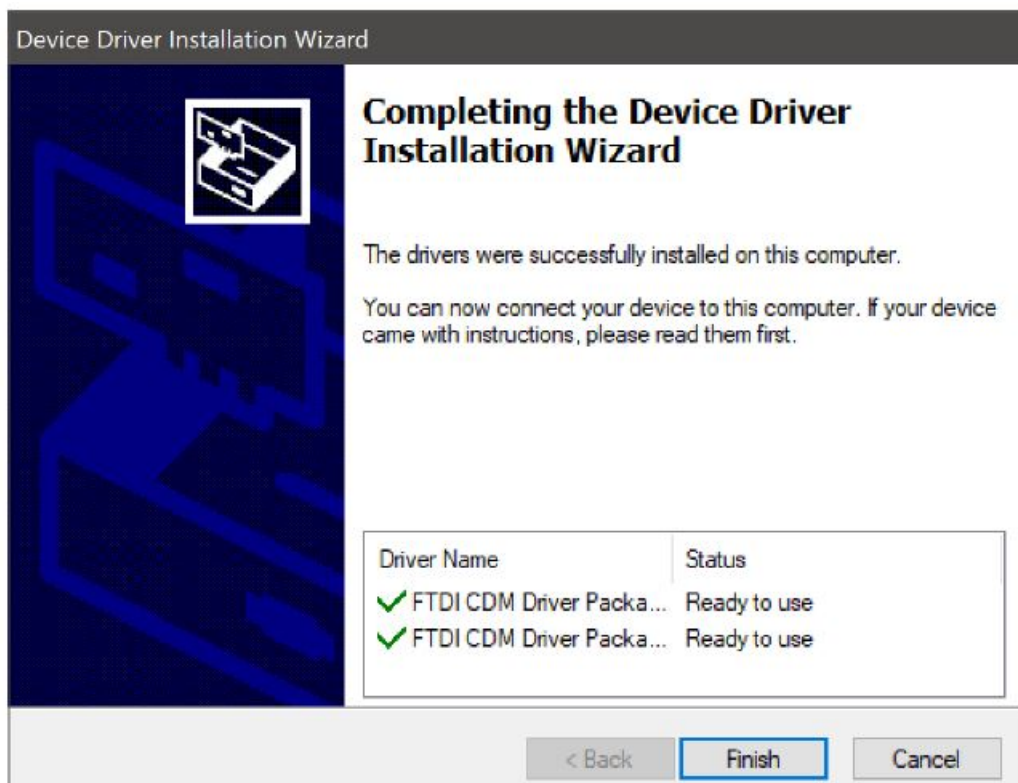


## License Agreement

Select I accept this agreement. Click Next to continue.

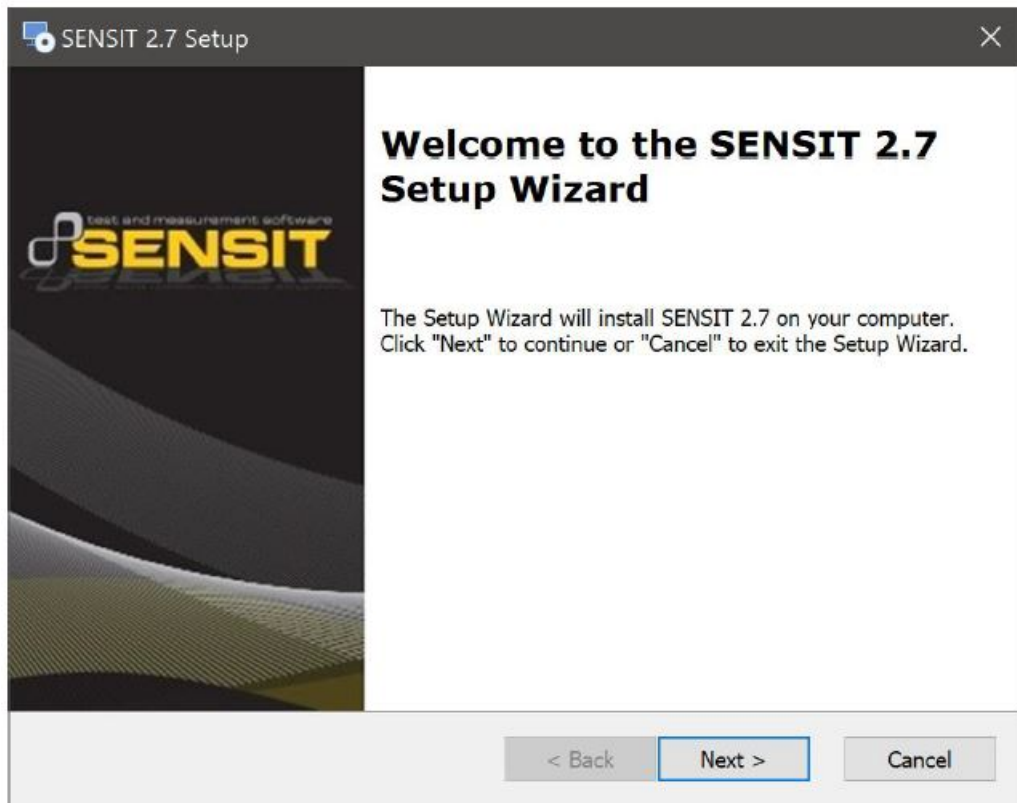


### Completing the Device Driver Installation Wizard Click Finish.



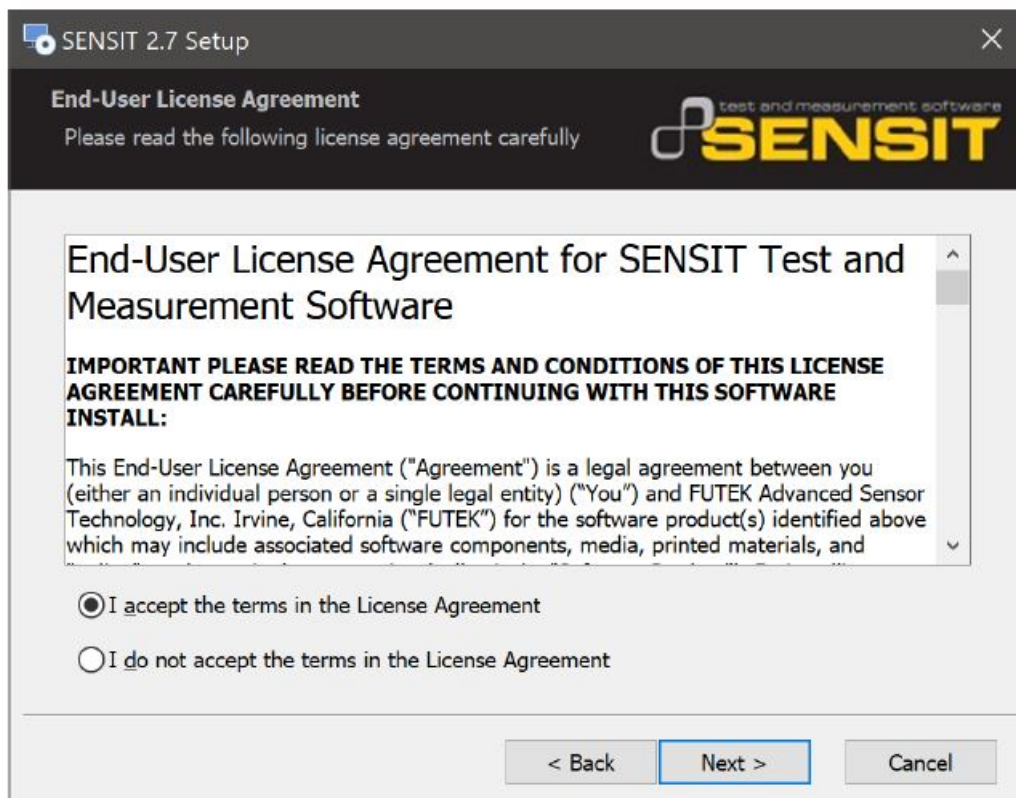
### SENSIT Test and Measurement Setup Wizard

Click Next to continue.



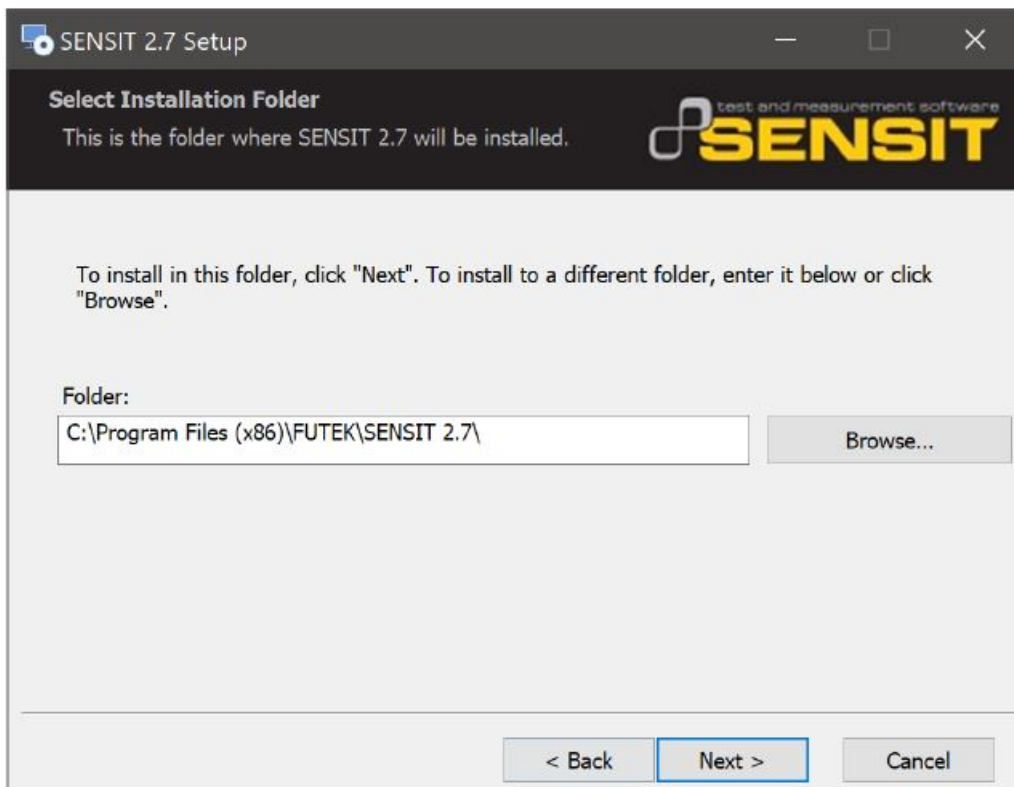
## End-User License Agreement

Select I accept the terms in the License Agreement. Click Next to continue.



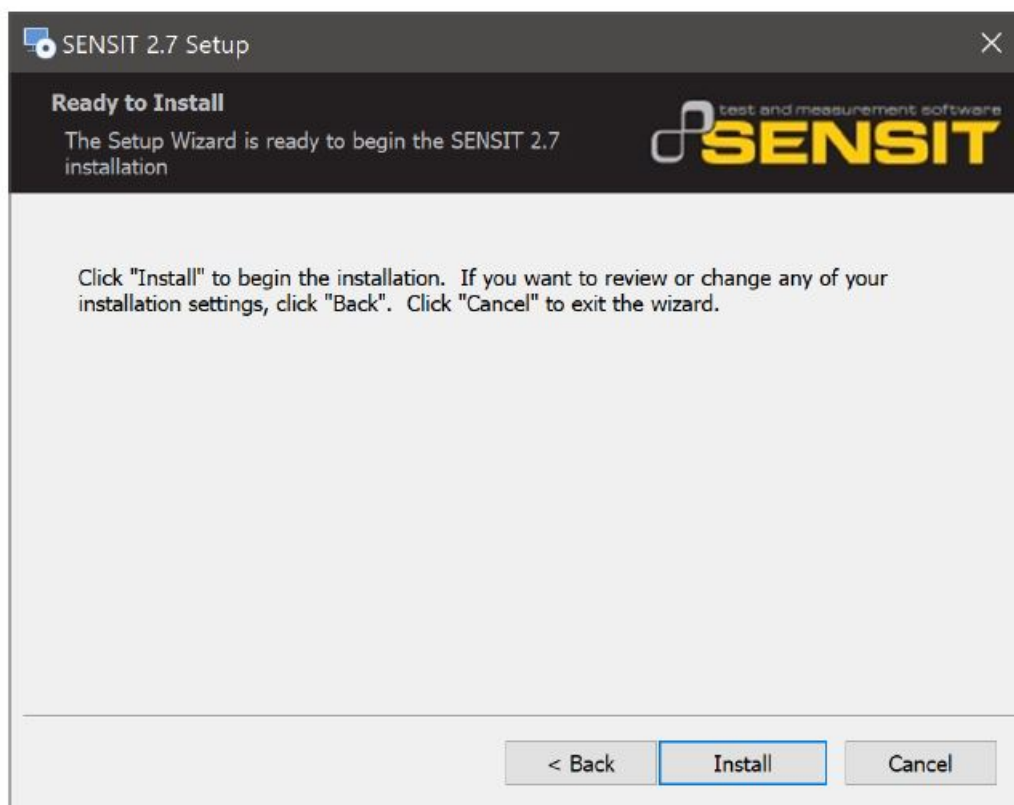
## Select Installation Folder

Click Next to continue.



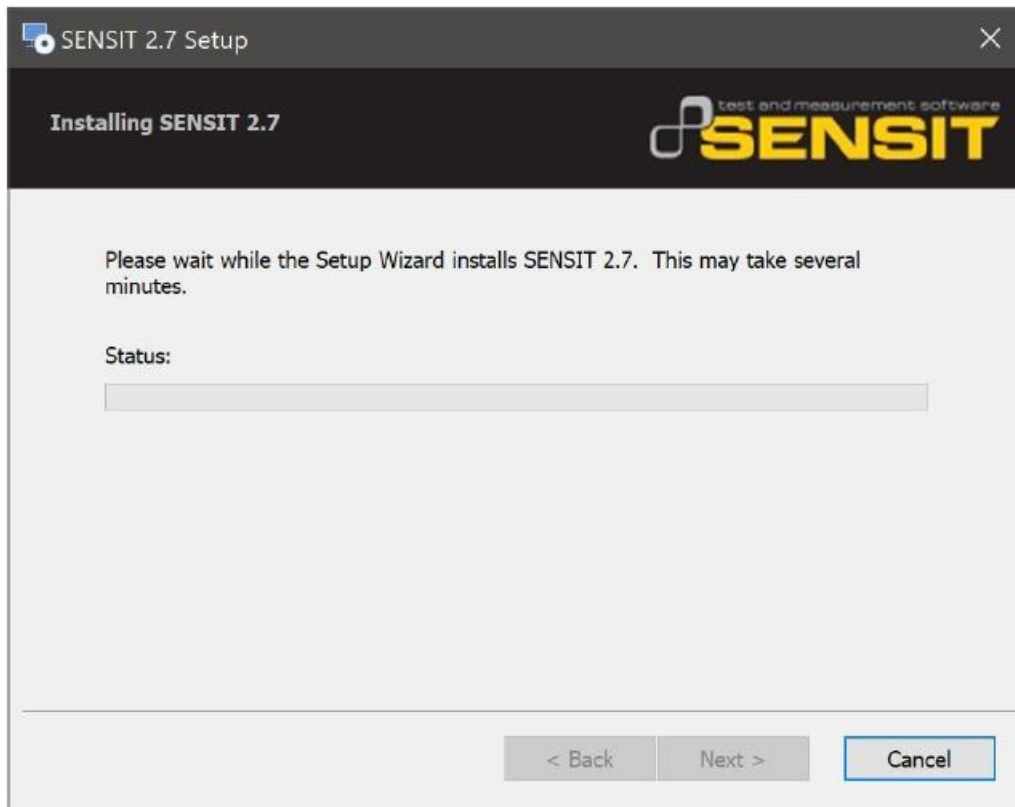
## Ready to Install

Click Install to begin the installation.



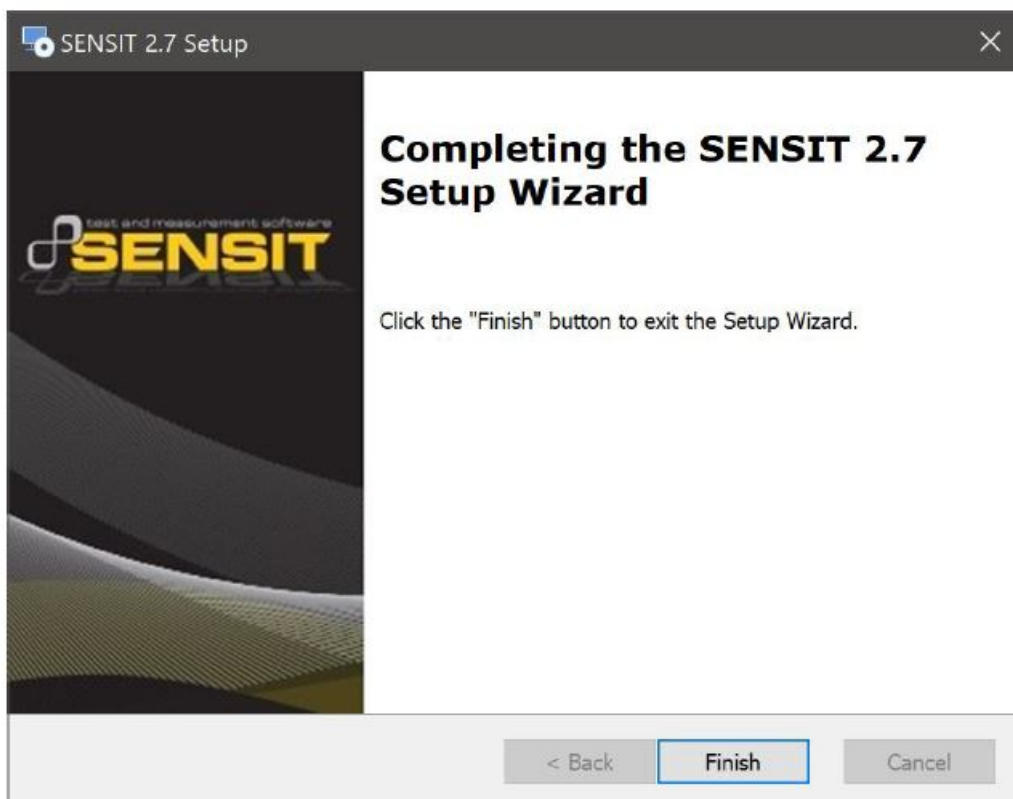
## Installing SENSIT

Wait for the wizard to finish.



## Completing the SENSIT Setup Wizard

Click Finish to exit the Setup Wizard.



## Release Information

SENSIT 2.7 Installation Guide – Released March 2022

## Copyright

Disclaimer

Neither the whole nor any part of the information contained in, or the product described in this manual, may be adapted, or reproduced in any material or electronic form without the prior written consent of the copyright holder. This product and its documentation are supplied on an as-is basis and no warranty as to their suitability for any particular purpose is either made or implied.  
This document provides preliminary information that may be subject to change without notice.

Contact Information



FUTEK Advanced Sensor Technology, Inc.

Headquarters

10 Thomas  
Irvine, CA 92618  
Business hours:  
7 am – 5 pm Pacific



- Phone: (949) 465-0900
- Email: [futek@futek.com](mailto:futek@futek.com)
- Website: [www.futek.com](http://www.futek.com)

Documents / Resources

	<a href="#">FUTEK SENSIT Test and Measurement Software</a> [pdf] Installation Guide SENSIT, Test and Measurement Software, SENSIT Test and Measurement Software
	<a href="#">FUTEK Sensit Test and Measurement Software</a> [pdf] User Guide Sensit Test and Measurement Software, Sensit, Test and Measurement Software

References

- [futek@futek.com](mailto:futek@futek.com)
- [D2XX Drivers - FTDI](#)
- [Load Cell | Torque Sensors | Force Measurement Solutions | FUTEK](#)
- [Load Cell | Torque Sensors | Force Measurement Solutions | FUTEK](#)
- [Download .NET Framework 4.8 | Free official downloads](#)
- [D2XX Drivers - FTDI](#)
- [Technical Support Contact FUTEK](#)
- [Home - FUTEK Advanced Sensor Technology](#)
- [Home - FUTEK Advanced Sensor Technology](#)
- [SENSIT Test and Measurement Software | Download | Sensor Solutions](#)
- [SENSIT Test and Measurement Software | Support | Sensor Solutions](#)

-  [Calibration Data](#)
-  [Software Key Process](#)

Manuals+.