

## Futaba S.BUS PC-Link Software User Guide

[Home](#) » [Futaba](#) » Futaba S.BUS PC-Link Software User Guide 

# Futaba®

USB INTERFACE

CIU-2

S.BUS PC-Link Software Manual

### Contents

- 1 S.BUS PC-Link Software
- 2 Downloaded Zip file extraction (decompression)
- 3 PC-Link software installation
- 4 CIU-2 and S.BUS servo connection
- 5 How to use the PC Link Software
- 6 Parameters Setup Screen Operation
- 7 Description of function of each parameter
- 8 Setting range of each parameter
- 9 Documents / Resources

### S.BUS PC-Link Software

The operating parameters of the Futaba programmable S.BUS servo can be set and changed from a PC by using this software. Since the Futaba CIU-2 USB adapter and power supply (4.8~6V battery) and Y-harness (or S.BUS hub) are necessary, procure them beforehand and place into the state in which the CIU-2 is operated properly from the PC.

**\*Note:** The S.BUS PC-Link software is for Windows® 7/Vista/XP use and is not compatible with other OS.

#### Distribution & exemption of liability

- Futaba Corporation shall not be responsible for any damage caused by use of this software. Use this software based on agreement to this.
- The copyright of this software and document resides with Futaba Corporation. Redistribution without the

approval of the copyright holder is prohibited.

- Reverse engineering and modification of this software is strictly prohibited.
- No part of this manual may be reproduced in any form without prior permission.
- The contents of this manual are subject to change without prior notice.
- While this manual has been carefully written, there may be inadvertent errors or omissions. Please contact our service center if you feel that any corrections or clarifications should be made.

## Downloaded Zip file extraction (decompression)

The downloaded S.BUS PC-Link software file is a Zip format file. Extract (decompress) this file, the procedure is shown as below.

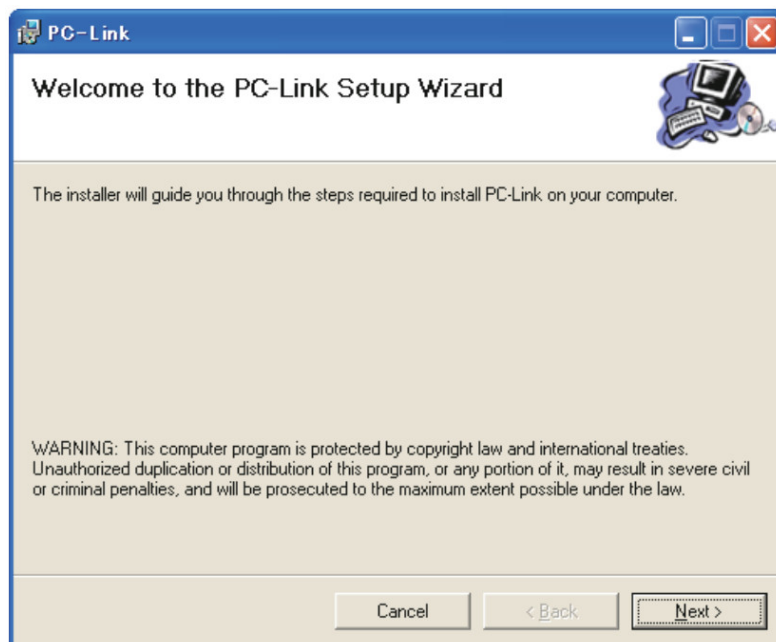
\* Download the S.BUS PC-Link software file from your Futaba importer's home page.

1. Double click the Zip format file to display its contents.
2. Click "Extract all files". The Extraction Wizard launches.
3. Extract (decompress) the Zip format file to the same location as the Zip file storage location.
  - \* PC-Link.msi file and setup.exe file are extracted.

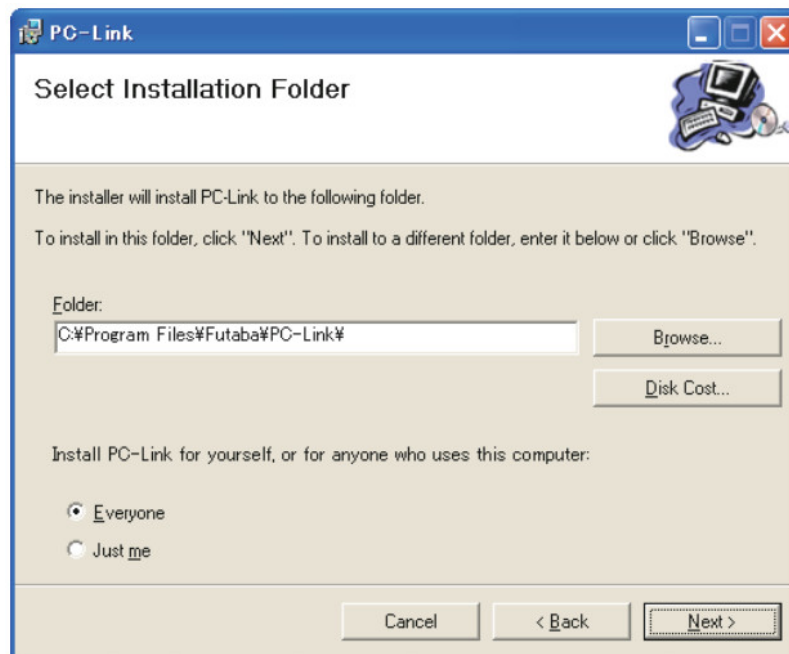
## PC-Link software installation

Before installing the PC-Link software, confirm that all other applications are closed.  
Close all virus check and other resident programs, if any.

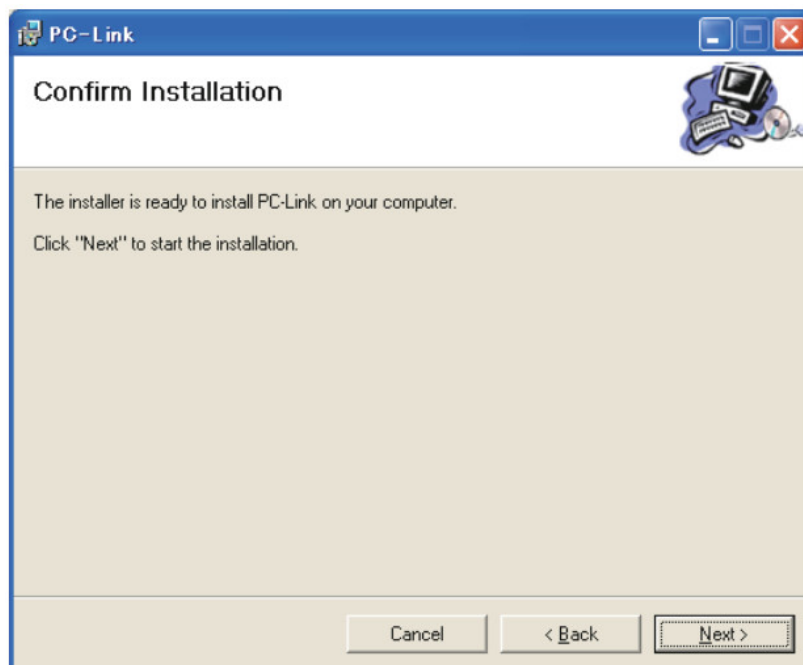
1. Double click the EXE file named "setup", and push the "Next" button.



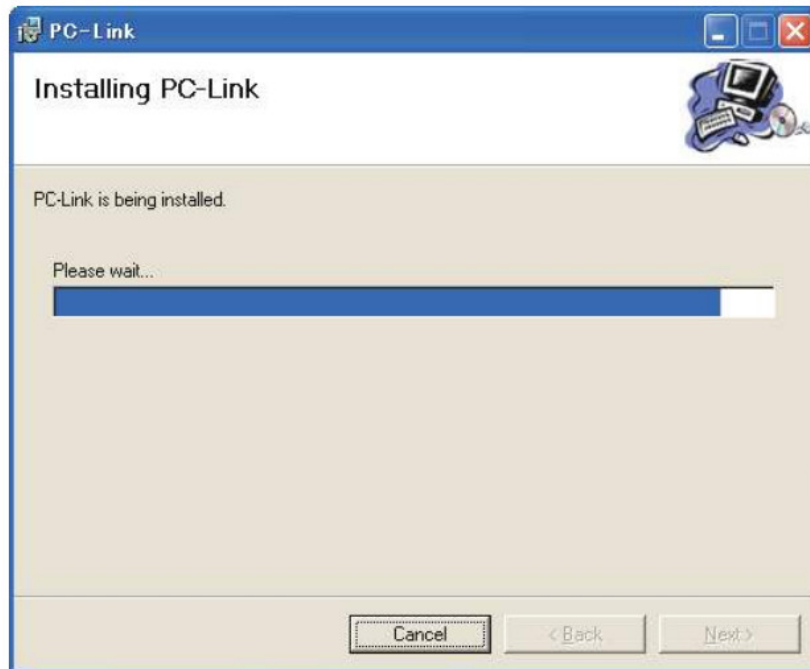
2. Choose the target folder, and push the "Next" button.



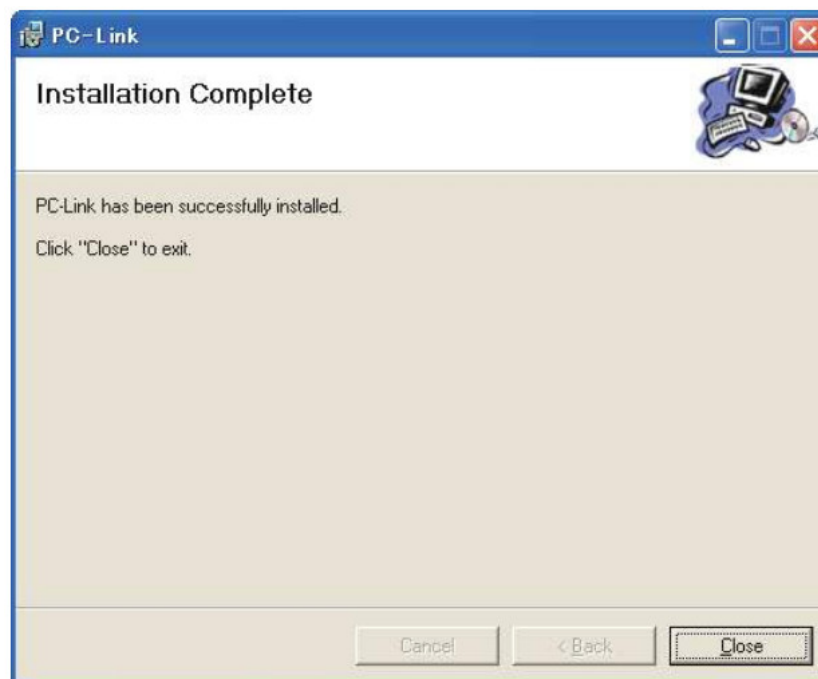
3. Push the "Next" button.



4. The install process begins.



5. The installer displays the following after the install process. Push the "Close" button.



## CIU-2 and S.BUS servo connection

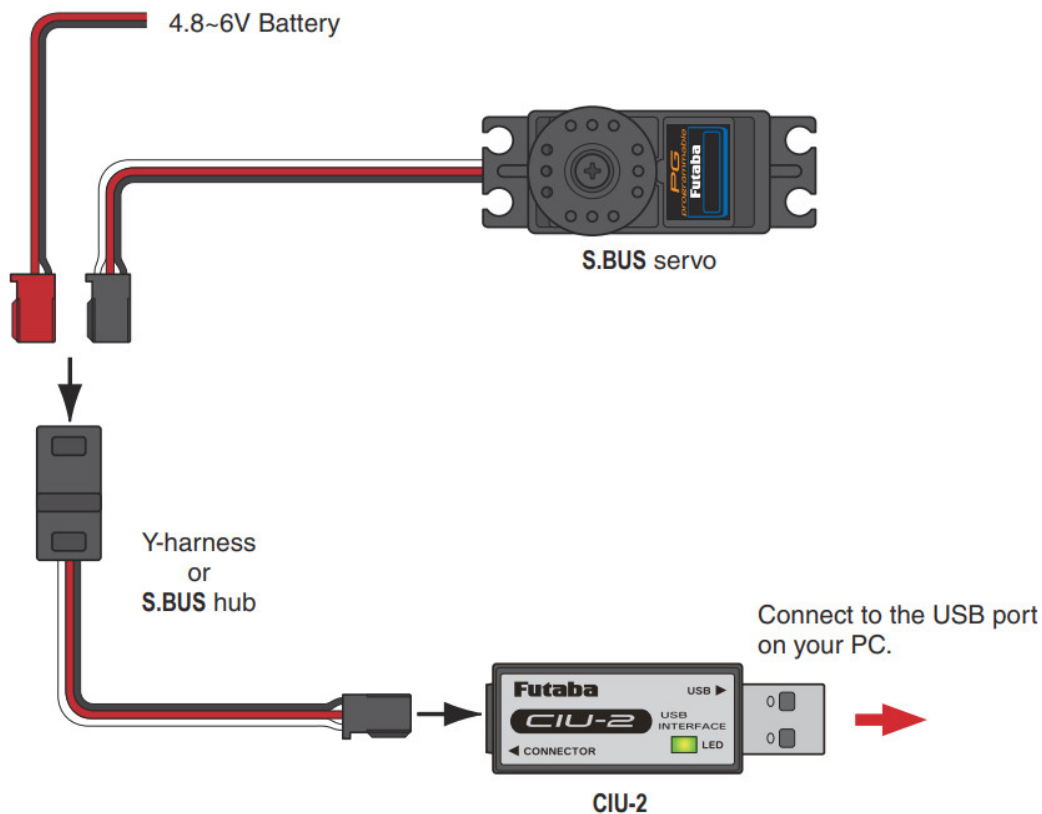
Connect S.BUS servo, CIU-2 USB adapter, 4.8~6V battery and Y-harness (or S.BUS hub) as shown below.

Installing the CIU-2 device driver

A CIU-2 USB adapter is necessary to execute this software. Before using this software, please install the CIU-2 device driver. If the CIU-2 USB device driver has already been installed, advance to the next step.

\* The CIU-2 device driver is available at the download corner of your Futaba importer's home page.

1. Connect the Y-harness or S.BUS hub to the CIU-2.
2. Connect the S.BUS servo and the batteries to the Y-harness or S.BUS hub.
3. Connect the CIU-2 to the USB port on your PC.
  - The CIU-2 LED turns on green.



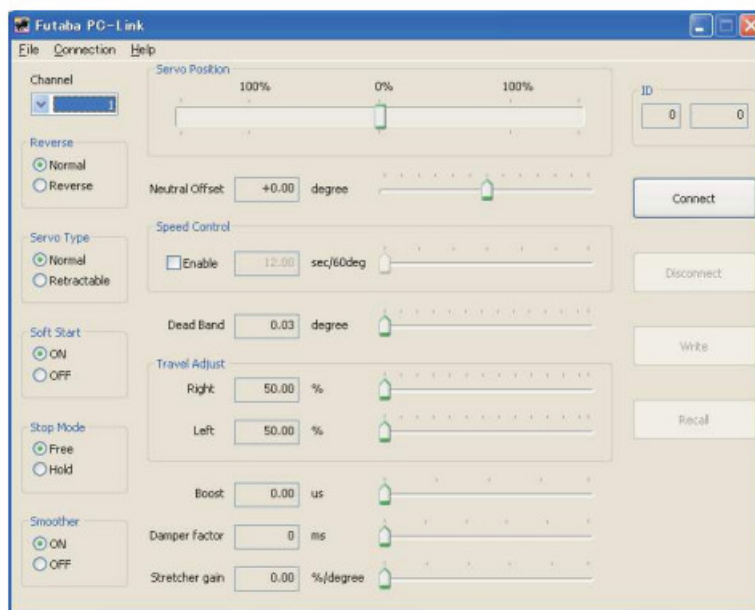
## How to use the PC Link Software

### Starting the PC-Link software

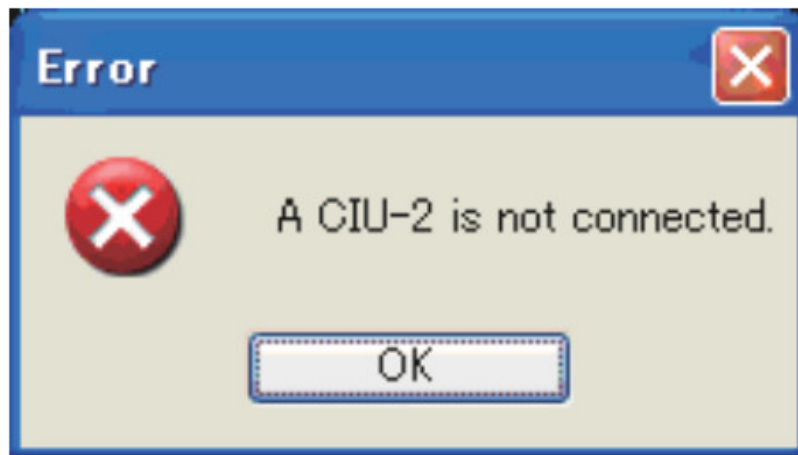
1. In the state in which the servo was connected to the PC by the previous described connection method, select Windows Start button, "All Programs", and program file "PC-Link" in "Futaba" sequentially.

\*The display may be different depending on the OS type and setting.

2. The parameters setup screen shown below appears.

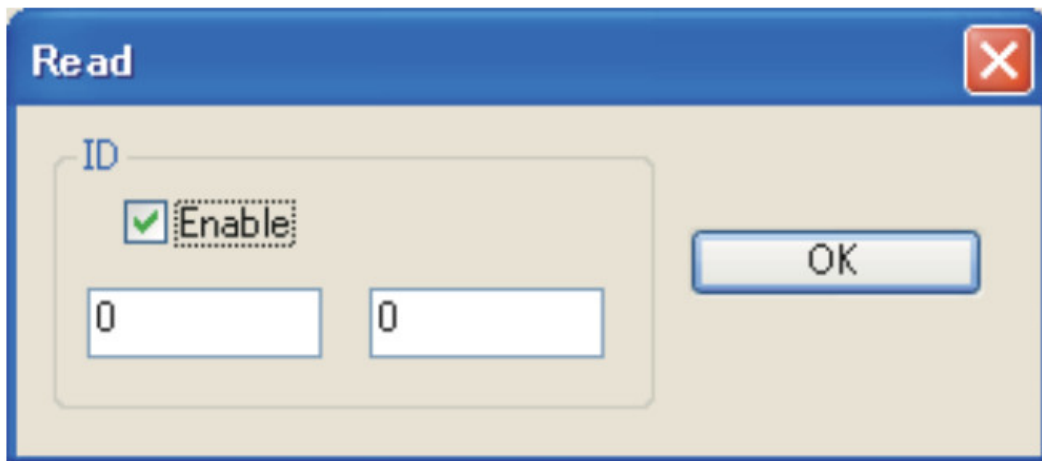


\* If the message shown below is displayed, the CIU-2 is not properly connected to the PC. Press the "OK" button and check the connection and repeat step 1 and 2.

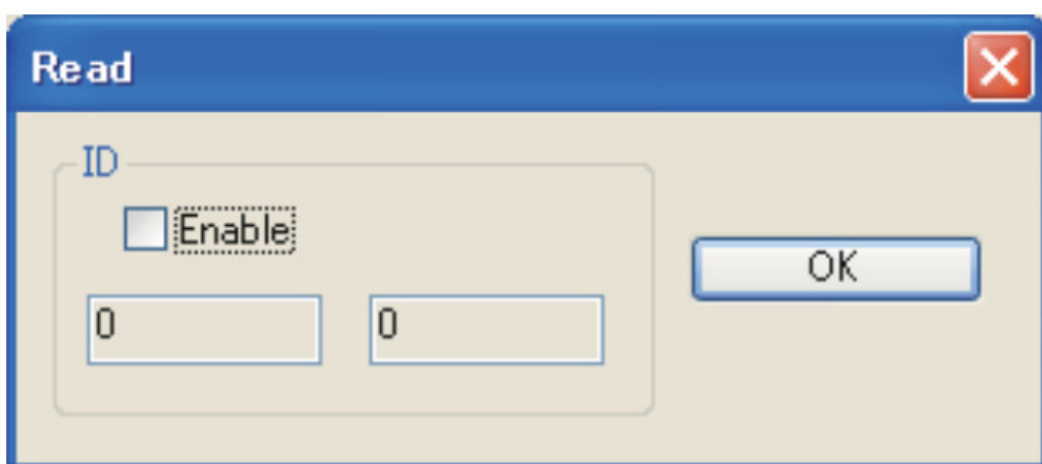


### Reading the setup parameters from the S.BUS servo

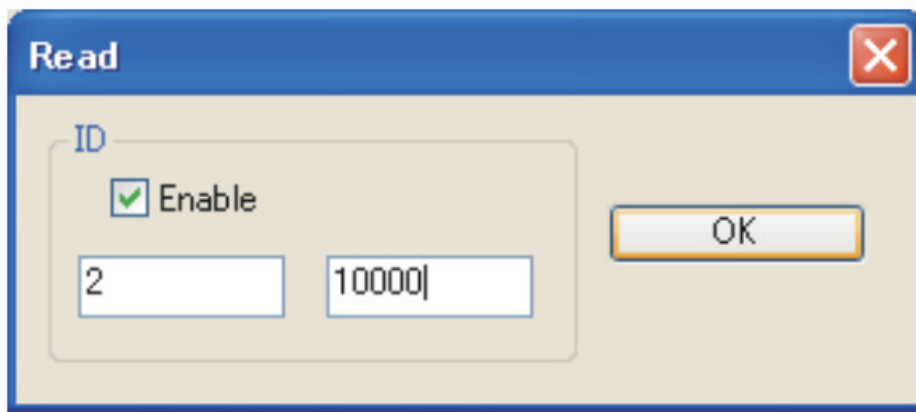
1. Click the "Connect" button. Or select the "Connect" command of the "Connection" menu. An ID input screen appears.



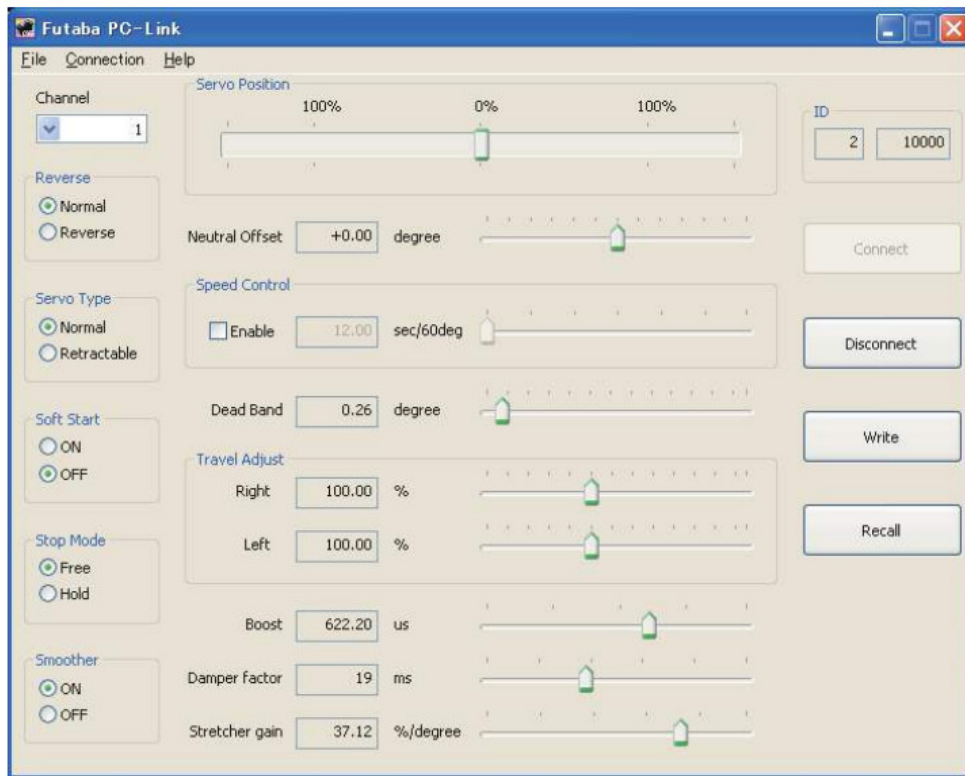
\* When only one servo is connected to the CIU-2, after deselecting by checking the "Enable" check box; press the "OK" button. The parameters are read.



\* When multiple servos are connected to the CIU-2, confirm that the "Enable" check box is checked and enter the ID given on the servo whose parameters you want to read and press the "OK" button. The parameters are read. (The figure below shows the case when the servo ID is "002-10000".)



2. The state of the parameters currently programmed at the servo is displayed.



\* When reading of the parameters failed, an error message is displayed. In this case, recheck the connection and ID and read the parameters again.



## Setting parameters data

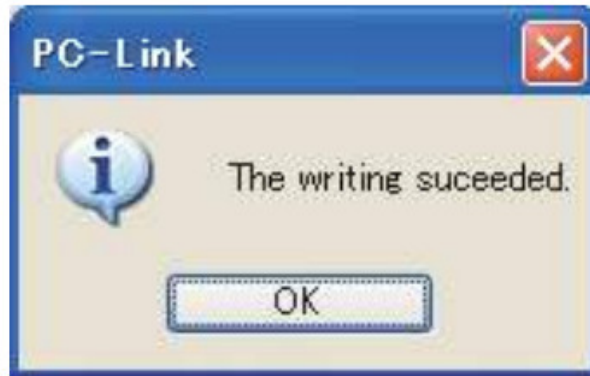
1. Change the desired parameters data.

\* For a description of the function, see the "Description of function of each parameter", p.10.

\* For a description of the parameter changing method, see the "Parameters Setup Screen Operation", p.9.

## Writing parameters data to the S.BUS servo

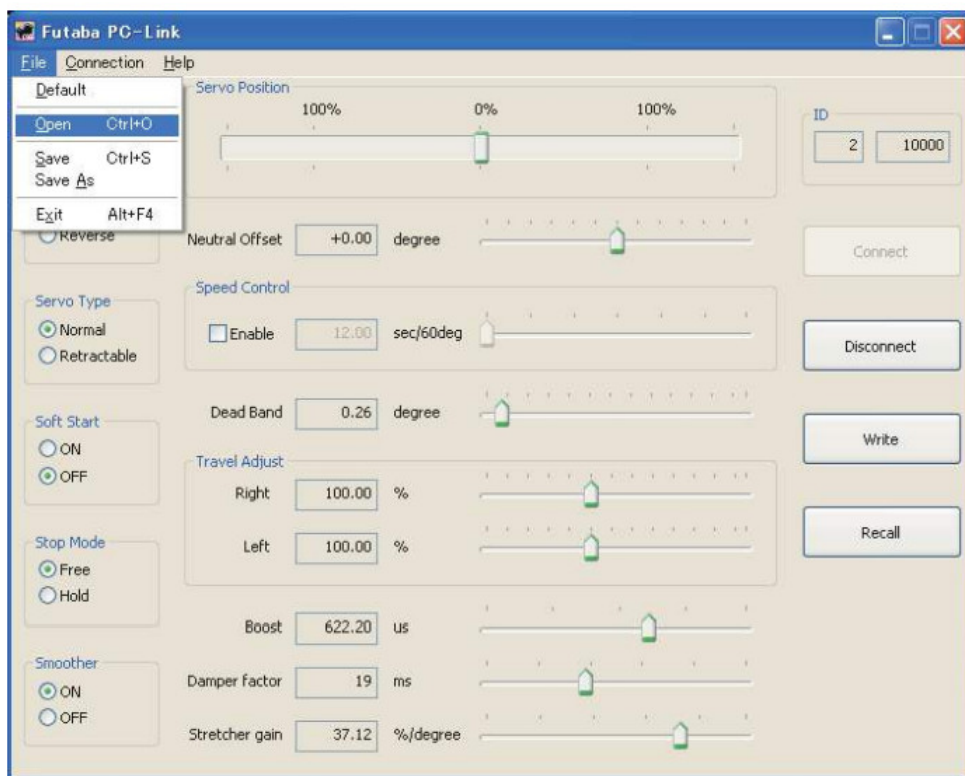
1. After parameters setting is complete, press the “Write” button. This operation transfers the modified parameters data to the S.BUS servo.
  - \* If the data was transferred to the S.BUS servo normally, the following message will appear.



2. Press the “Disconnect” button.
3. Disconnect the S.BUS servo. This operation saves the modified parameters data to the S.BUS servo finally.

## Reading parameters data saved at the PC

1. Select the “Open” command from the “File” menu.



2. A file open dialog opens. Select the file you want to open, and press the “Open” button. When reading is complete, the parameters data on the screen is changed.
  - \* At the time the file was read data is not transferred to the S.BUS servo. To write data directly to the S.BUS servo, check the read contents and transfer the parameters data to the S.BUS servo by pressing the “Write” button.

## Saving parameters data to PC



1. Select the “Save” or “Save As” command from the “File” menu.
  - \* The “Save” command overwrites an existing filename. The “Save As” command saves the data under a new filename.
2. The parameters file is saved to the PC by pressing the save button in the data save dialog.

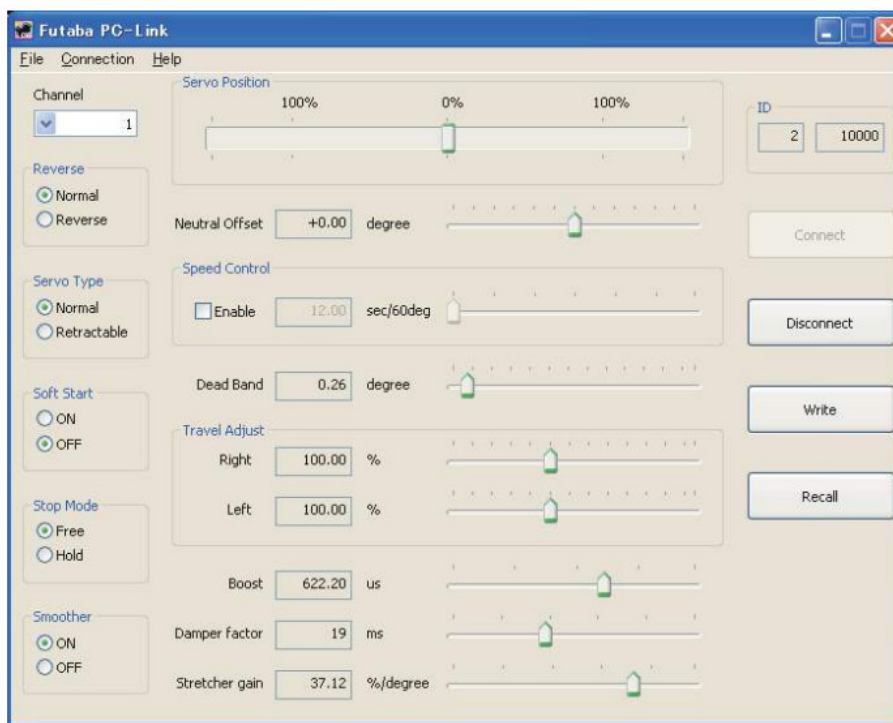
### Initializing the parameters data

1. Select the “Initialize” command from the “File” menu.
  - \* A confirmation message appears.
2. When Yes (Y) is clicked, the parameters data on the screen is changed to the default state.
  - \* At the time the parameters data was initialized, the data is not transferred to the S.BUS servo. The S.BUS servo parameters data is initialized to the initial values by pressing the “Write” button.

### Discarding the parameter changes

1. Click the “Recall” button. Or select the “Recall” command of the “Connection” menu.
  - \* The displayed parameters return to the parameters read last.

### Parameters Setup Screen Operation



### (Parameters setting screen)

1. You can change the Channel parameters by clicking the down arrow next to the number and selecting a different channel.
2. Select the function you want to set for the Reverse, Servo Type, Soft Start, Stop Mode, and Smoother parameter items.
3. When the slide knob of each item on the screen is changed, the set value is changed. When setting an exact value, the value can be changed in minimum units by PC cursor key operation.
4. The “Servo Position” item specifies the operating angle of the connected S.BUS servo. It can be set while

checking operation of the set parameters.

5. The new setting is immediately sent to the servo and reflected in operation. (Temporary setting function)

\* The temporary setup parameters are not saved to the servo until the "Write" button is pressed. Save the parameters to the servo by pressing the "Write" button after deciding the optimum value of each item.

**Note:** Do not pull out the lead wire or turn off the power while the parameters are being written.

**Note:** After rewriting the parameters, thoroughly check the direction of operation, etc. by ground test.

## Description of function of each parameter

- **ID**

Displays the ID of the servo whose parameters are to be read. It cannot be changed.

- **Channel**

Channel of the S.BUS system assigned to the servo. Always assign a channel before use.

- **Reverse**

The direction in which the servo rotates can be changed.

- **Servo Type**

When the servo remains stopped for 30 seconds, the dead band expands and unnecessary hold current due to external force is eliminated. When a new position signal enters, the normal mode is restored and normal operation is resumed. Select the "Retractable" mode for the retractable landing gear servo. In this case, set the Travel Adjust and the Speed Control at the same time.

- **Soft Start**

Restricts operation in the specified direction the instant the power is turned on. By making this setting, only the first operation when the power is turned on slowly moves the servo to the specified position.

- **Stop Mode**

The state of the servo when the servo input signal is lost can be specified. The "Hold" mode setting holds the servo in its last commanded position even if using AM or FM system.

- **Smoother**

This function changes smoothness of the servo operation relative to operation signal changes. Normally use at Smooth setting. Especially, select the "OFF" mode when quick operation is necessary.

- **Neutral Offset**

The neutral position can be changed. When the neutral offset is large value, the servo's range of travel is restricted on one side.

- **Speed Control**

Speeds can be matched by specifying the operating speed. The speed of multiple servos can be matched without being affected by motor fluctuations. This is effective for load torques below the maximum torque.

However, note that the maximum speed will not be exceeded even if a speed over the maximum speed of the servo at each operating voltage is set.

- **Dead Band**

The dead band angle at stopping can be specified. If the dead band angle is small, the servo will operate continuously and the life of the servo may be shortened.

- **Travel Adjust**

The left and right travels centered about the neutral position can be set independently.

- **Boost**

The minimum current applied to the internal motor when starting the servo can be set. The dead band over which the servo does not operate even when a minute command is applied can be reduced and the servo can be more accurately stopped at the target position by setting this parameter to the optimum value.

- **Damper**

Makes it difficult for the servo to hunt (phenomena which cause the servo to oscillate) by suppressing overshoot due to inertia when a large load is applied. When hunting occurs due to the load even though the Dead Band, Stretcher, Boost, and other parameters are suitable, adjust this parameter to a value larger than the initial value.

- **Stretcher**

Specifies the range which adjusts the torque when the servo attempts to return to the target position when the current position deviates from the target position. Within the range specified here the torque which attempts to return the servo to the target position is output in proportion to the difference between the target position and the current position. The left direction and right direction can be set independently. Hunting can be reduced by using this function.

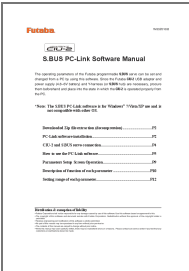
## Setting range of each parameter

- **Reverse:** Normal/Reverse
- **Servo Type:** Normal/Retractable
- **Soft Start:** ON/OFF
- **Stop Mode:** Free/Hold
- **Smoother:** ON/OFF
- **Neutral Offset:**  $\pm 30^\circ$  based on the default position
- **Speed Control:** Max. 0.1sec/60° ~12sec/60°
- **Dead Band:** 0.03~3.98°
- **Travel Adjust:** 50~175%
- **Boost:** 0~1000.4 $\mu$ s
- **Damper factor:** 0~50ms
- **Stretcher gain:** 0~49.92%/degree



FUTABA CORPORATION Phone: +81 475 32 6982, Facsimile: +81 475 32 6983  
1080 Yabutsuka, Chosei-mura, Chosei-gun, Chiba 299-4395, Japan  
©FUTABA CORPORATION 2010, 2 (1)

## Documents / Resources

	<p><a href="#">Futaba S.BUS PC-Link Software [pdf] User Guide</a> S.BUS PC-Link Software, S.BUS, PC-Link Software, Software</p>
---	---

