



Futaba MCP-2 Programmer Box Instruction Manual

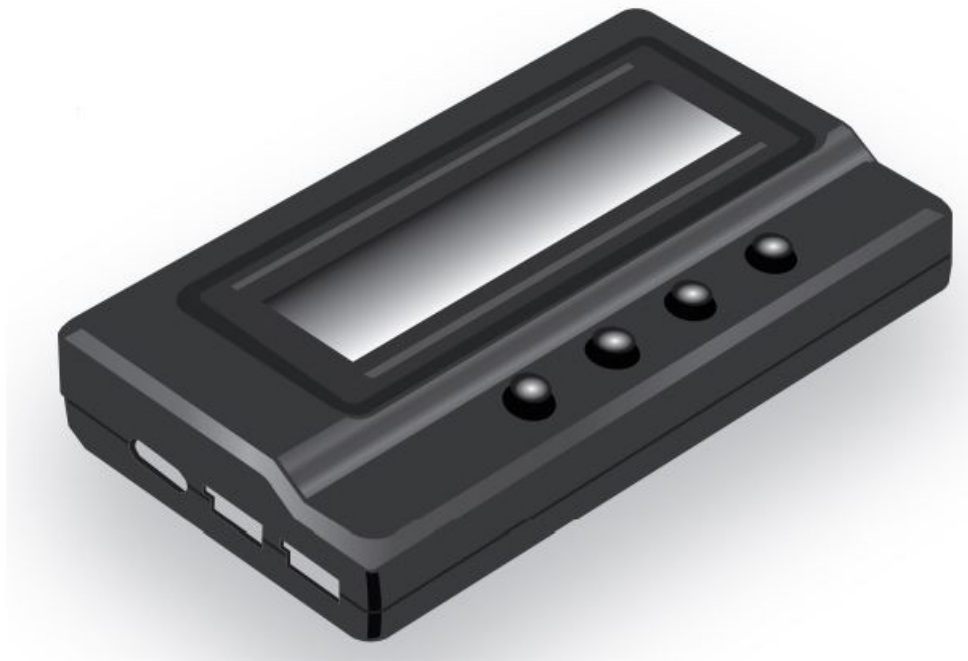
[Home](#) » [Futaba](#) » Futaba MCP-2 Programmer Box Instruction Manual 

Contents

- [1 Futaba MCP-2 Programmer Box](#)
- [2 Features and functions](#)
- [3 Usage precautions](#)
- [4 Corresponding ESC](#)
- [5 Functions of each button and port](#)
- [6 ESC setting](#)
- [7 Connect the ESC to the battery and turn it on](#)
- [8 Battery Check](#)
- [9 Acts as a Lipo battery voltmeter.](#)
- [10 MCP-2 update](#)
- [11 Documents / Resources](#)
- [12 Related Posts](#)

Futaba®

Futaba MCP-2 Programmer Box



Features and functions

Thank you for purchasing an MCP-2 ESC Programmer. The MCP-2 is a dedicated programmer for the brushless motor ESC given in “Corresponding ESC” above. Quick and accurate setting matched to the characteristics of the model is possible and the brushless motor can be operated at peak performance.

- Set the corresponding ESC. Programmable items are displayed on the LCD screen.
- It acts as a USB adapter, linking the ESC to your PC to update the ESC firmware, and setting programmable items with the Futaba ESC USB link software on your PC.
- It acts as a Lipo battery checker and measures the voltage of the entire battery pack and each cell.

Before using the MCP-2

- * Improper handling of the LiPo battery is extremely dangerous. Use the battery in accordance with the instruction manual supplied with it.

Usage precautions

WARNING

- When setting and operating the ESC be sure that no part of your body touches all the parts which rotate.
- The motor may rotate unexpectedly due to erroneous connection and operation of the ESC and is extremely dangerous.
- Before flight, always check ESC operation.
- If the ESC is not set properly control will be lost and is extremely dangerous.

CAUTION

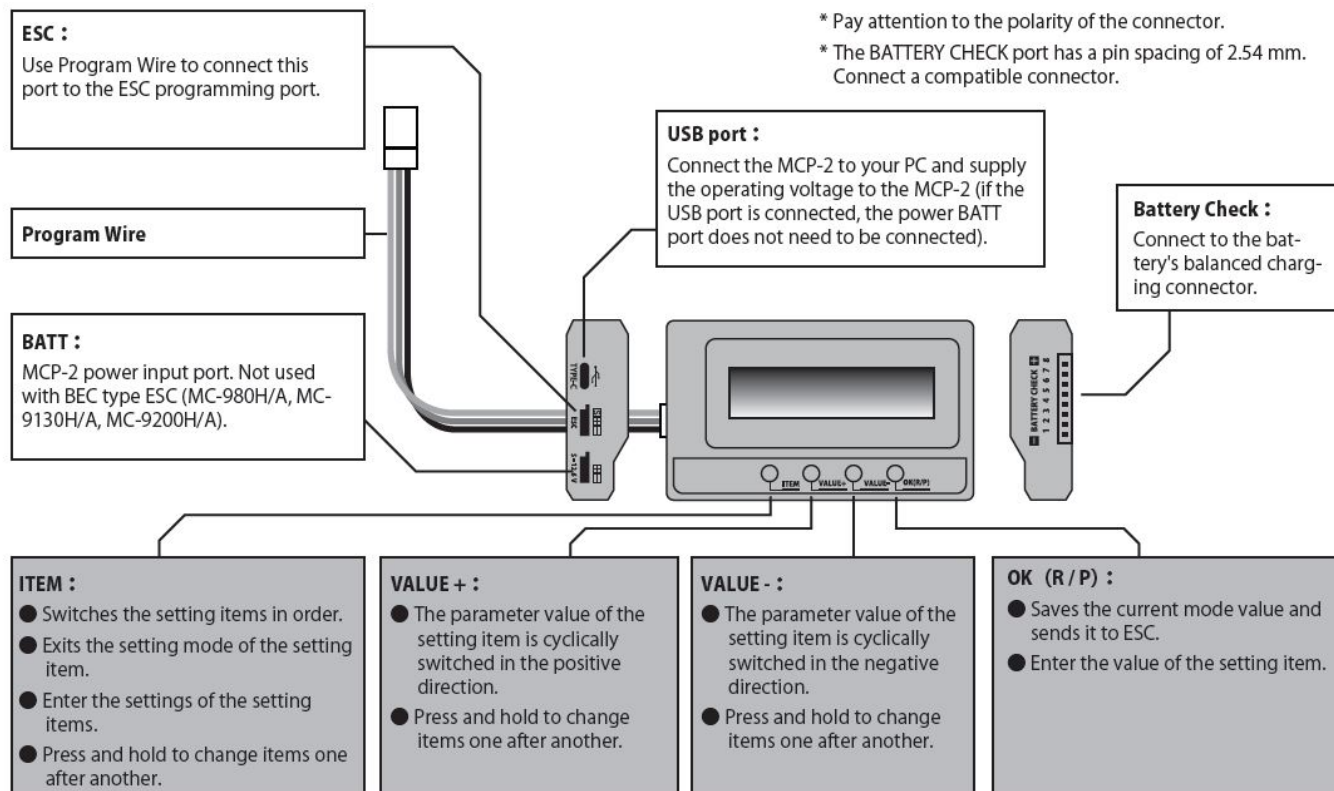
- Do not open the case or disassemble this product.
- The interior will be damaged. In addition, repair will become impossible.
- This product is only for use with the “Corresponding ESC” shown above. It cannot be used with other products.

Corresponding ESC

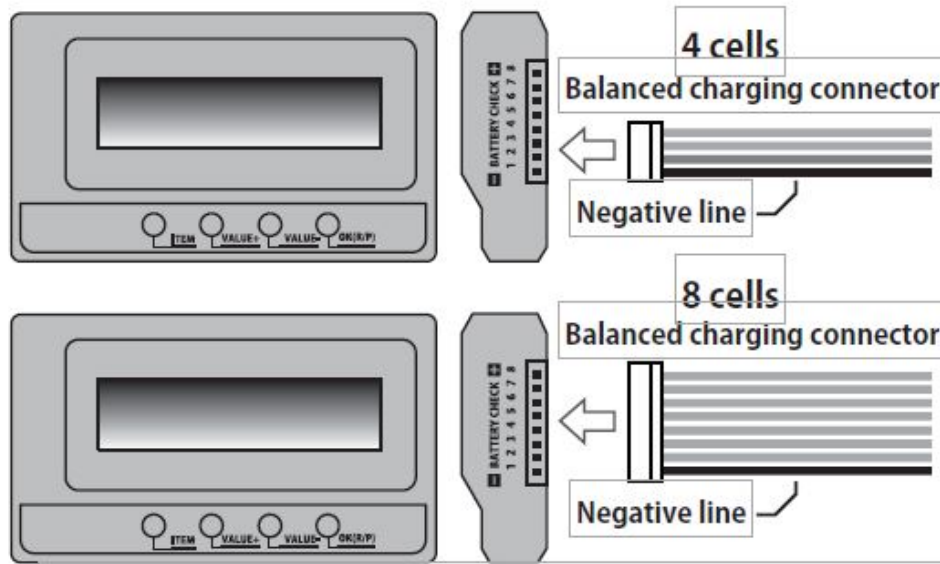
Futaba MC-980H/A Futaba MC-9130H/A Futaba MC-9200H/A

	MCP-2
Function	ESC setting / PC Link / Battery checker
Size	90 x 51x 17 mm
Weight	65 g
Power supply	DC 4.5 V 12.6 V

Functions of each button and port



ESC setting



Connect the ESC to the battery and turn it on

Program box shows the in initial screen, press any button on the Program box to communicate with the ESC, the screen show, after several seconds, LCD shows the current profile name, and then the 1st programmable item is displayed. Press “ITEM” and “VALUE” buttons to select the options, press “OK” button to save the settings.

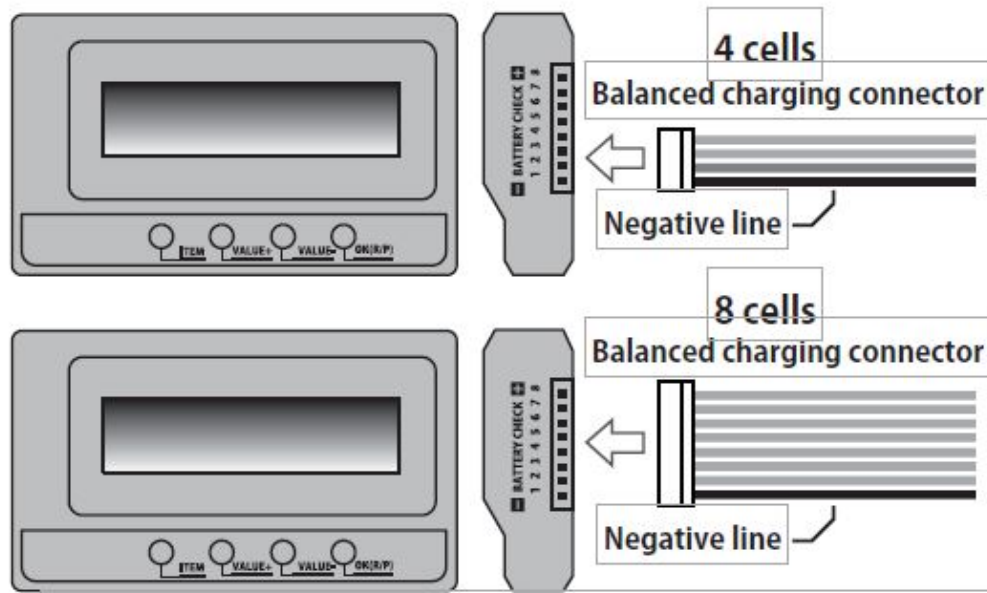
- **Reset the ESC by the program box**

When the connection between ESC and program box is successfully established, press “ITEM” button for several time still the “Load Default Settings” is displayed, press “OK” button, then all programmable items in the current profile are reset to factory-preset options.

- **Change Profiles of ESC**

If there are multiple sets of Profiles within ESC users can set the param-eters in each mode first for different applications, such as “Modify” con-test. When move to different areas or use different motors, only need to switch to the corresponding mode. It is fast and convenient. The switching method is: When ESC and LCD setting box is online status, long press “OK (R/P)” button. When LCD displays the current mode name, press “VALUE” button, it will switch to the next mode at this time, press again to switch to next mode, repeat it. If you need to modify the parameters of the se-lected mode, press “ITEM” button to display and modify the parameters of the current mode.

Battery Check



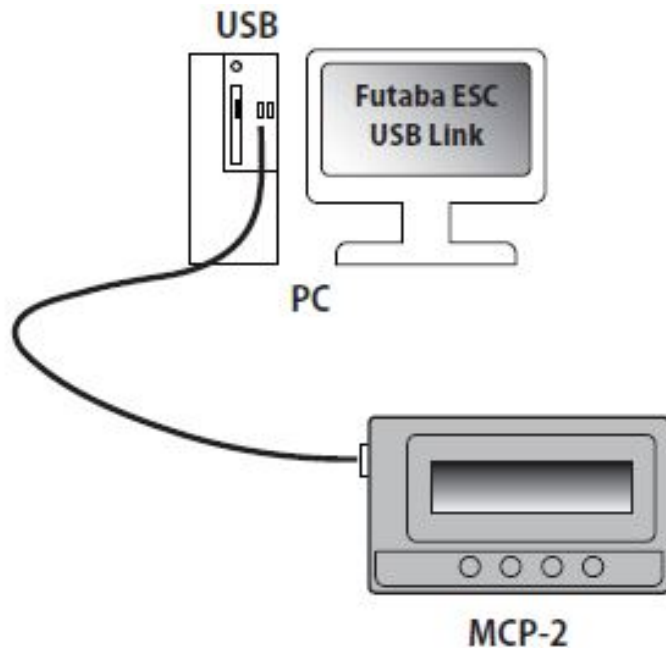
Acts as a Lipo battery voltmeter.

Measurable battery: 2-8S Lipo/Li-Fe

Precision: $\pm 0.1V$ Plug the balance charge connector of the battery pack into the "BAT-TERY CHECK" port (Please make sure that the negative pole points to the "-" symbol on the program box), and then LCD shows the firmware, the voltage of the whole battery and each cell.

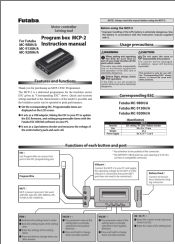
- When checking the voltage, please supply the Program box only from the balance charge connector. Don't supply Program box from Batt or USB port.

MCP-2 update



Sometimes the firmware of Program box should be updated because the functions of ESC are improved continuously. Connect the Program box with PC through USB port, run Hobbywing USB Link Software, select "Device" "Multifunction LCD Program Box", at the "Firmware Upgrade" module, choose the new firmware you want to use, and then click "Upgrade" button.

For more detail information, please refer to Futaba Website: <https://futabausa.com/>

The thumbnail shows the cover of the 'Futaba MCP-2 Programmer Box' instruction manual. It features a photograph of the device, which is a small, dark-colored box with a keypad and a small display. The text on the cover includes 'Futaba', 'MCP-2', and 'Programmer Box'. There are also some technical specifications and a diagram showing the device connected to a computer.

Futaba MCP-2 Programmer Box [pdf] Instruction Manual
MCP-2, MC-980H, MC-9130H, MC-9200H, Programmer Box