



Futaba GY701 Data Copy Tool Instructions

[Home](#) » [Futaba](#) » Futaba GY701 Data Copy Tool Instructions 

Contents

- [1 Futaba GY701 Data Copy Tool](#)
- [2 Product Usage Instructions](#)
- [3 Connection](#)
- [4 Documents / Resources](#)

Futaba

Futaba GY701 Data Copy Tool



Product Information

- Product Name: GY701/CGY750V2.0 Data Copy Tool
- Model Number: 1M23Z03008

Features

The GY701/CGY750V2.0 data copy tool allows you to store and transfer setting data between the GY701 or CGY750V2.0 and your PC.

Caution: The data copy tool is compatible with the following firmware versions of the GY701 and CGY750V2.0:

- GY701 Ver: 1.10 or later
- CGY750 Ver.2.00 or later (Please use the previous version for
- Ver.1.20 – 1.40. For CGY750 Ver.2.0 and later, the previous version may not work correctly.)

Connection

1. Connect the CIU-2/CIU-3 to the USB connector of your PC and the other end to the S.BUS input terminal of GY701/CGY750V2.0.
2. Supply power to GY701/CGY750V2.0.

Note: Prior to operation, make sure to install the PC drivers of the CIU-2/CIU-3 to your PC and decompress the downloaded GYLink software.

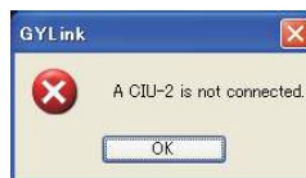
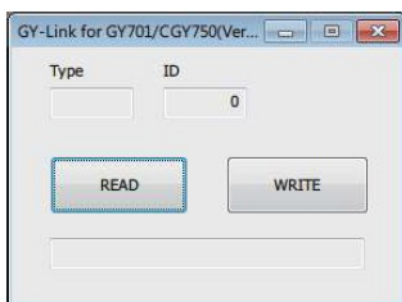
Product Usage Instructions

Storing Setting Data to PC

1. Run the GYLink.exe software that you downloaded.
2. A dialogue box will appear when GYLink starts properly.
 - If the PC cannot recognize the CIU-2/CIU-3, an error message will appear. In this case, check the proper connection of the CIU-2/CIU-3 and ensure that the PC driver software is installed correctly.
3. Click the [READ] button on the box.
 - The PC will prompt you to select the destination folder and file name for storing the data.
 - Choose the desired folder on your PC and click the [Save]button. The box will show [Now reading...].
4. Once the reading process is complete, the box will display the model type and ID number.
 - If you encounter a read error message or the box does not show the ID number, ensure the wire connection and power supply are correct, and then retry the reading process.

Transferring Setting Data to GY701/CGY750V2.0

1. Run the GYLink.exe software that you downloaded.
2. A dialogue box will appear when GYLink starts properly.



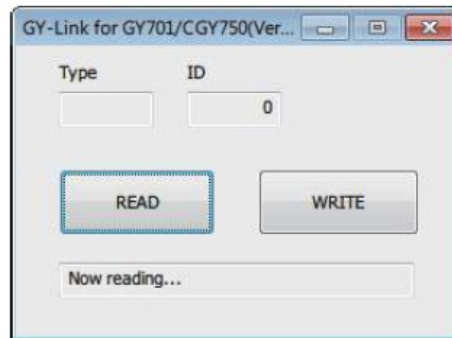
- If the PC cannot recognize the CIU-2/CIU-3, an error message will appear. In this case, check the proper

connection of the CIU-2/CIU-3 and ensure that the PC driver software is installed correctly.

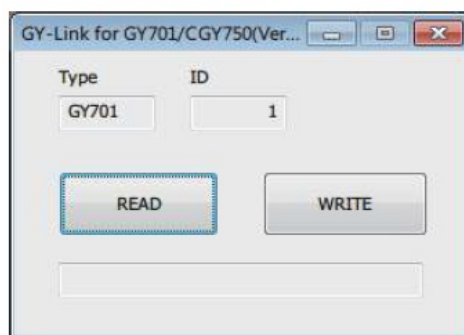
3. Click the [WRITE] button on the box.

- The PC will prompt you to select the destination folder and file name for the data transfer.
- Select the file name and click the [Open] button on the box. The box will show [Now writing].

4. Once the transfer is completed, [The writing succeeded] will be displayed.



- If a writing error message appears, try the writing process again.



Contact Information FUTABA CORPORATION

Phone: +81 475 32 6982

Facsimile: +81 475 32 6983

1080 Yabutsuka, Chosei-mura, Chosei-gun, Chiba-ken, 299-4395, Japan Date: 2016, 6 (2)

1. The feature of GY701/CGY750V2.0 data copy tool

- Setting data of the GY701 or CG750V2.0 can be stored on a PC.
- Setting data that are stored on the PC can be transferred to GY701 or CGY750V2.0.

Caution: The data copy tool can work with later firmware versions of the GY701 and CGY750V2.0 as listed below. Please update the GY701 and CGY750V2.0 prior to using this tool.

- GY701 Ver: 1.10 or later
- CGY750 Ver.2.00 or later
- (Please use the previous version for Ver.1.20 – 1.40.
- For instead of At CGY750 Ver.2.0 and later, the previous version can not work correctly.)

Connection

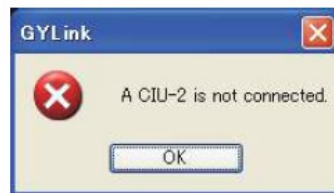
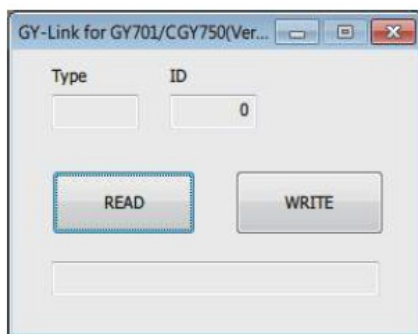
1. Connect the CIU-2/CIU-3 to the USB connector of the PC and the other end to the S.BUS input terminal of GY701/CGY750V2.0.

2. Supply the power to GY701/CGY750V2.0.

- PC drivers of the CIU-2/CIU-3 must be installed to the PC prior to the operation.
- Decompress the download file of the GYLink software.

3. The direction of storing the setting data of the GY701/CGY750V2.0 to PC.

1. Run the GYLink.exe of the downloaded software.
2. A dialogue box will appear when the GYLink starts properly as below. The error message will appear when the PC can not recognize the CIU-2/CIU-3 as right below. In this case, check the CIU-2/CIU-3 is connected properly or the PC driver software is installed properly.



3. Push the [READ] button on the box. PC will ask you for the destination folder and file name it is to be stored.
4. Put the file name to the desired folder of your PC and push the [Save] button. The box shows [Now reading].
5. Once the reading process is complete, the box shows the model type and ID number. When you have a Read error message or box that does not show the ID number, make sure the wire connection and power supply and retry the reading process again.



The direction of transferring the setting data on the PC to GY701/CGY750V2.0

1. Run the GYLink.exe of the downloaded software.
2. A dialogue box will appear when the GYLink starts properly as shown below. The error message will appear when the PC can not recognize the CIU-2/CIU-3 as right below. In this case, check the CIU-2/CIU-
3. connected properly or the PC driver software are installed properly.
4. Push the [WRITE] button on the box. PC will ask you for the destination folder and file name it is to be transferred.
5. Select the file name and push the [Open] button on the box. The box shows [Now writing]. When the transfer is completed, [The writing succeeded] is shown. In case of writing error message is appeared, try the writing process again.

<div><div><div><div><div><div></div><div></div></div></div><div><div><div></div><div></div></div></div><div><div><div></div><div></div></div></div></div></div><div><div><div><div><div></div><div></div></div></div><div><div><div></div><div></div></div></div><div><div><div></div><div></div></div></div></div></div><div><div><div><div><div></div><div></div></div></div><div><div><div></div><div></div></div></div><div><div><div></div><div></div></div></div></div></div><div><div><div><div><div></div><div></div></div></div><div><div><div></div><div></div></div></div><div><div><div></div><div></div></div></div></div></div></div>
