



Futaba CIU-2 Gyro Program Box Instruction Manual

[Home](#) » [Futaba](#) » Futaba CIU-2 Gyro Program Box Instruction Manual 

Contents

- [1 Futaba CIU-2 Gyro Program Box](#)
- [2 Product Information](#)
- [3 Product Usage Instructions](#)
- [4 Software Update Functions](#)
- [5 Software Update Procedure](#)
- [6 PC side](#)
- [7 Ver.4.3](#)
- [8 Ver.4.2](#)
- [9 Ver.4.1](#)
- [10 Documents / Resources](#)



Futaba CIU-2 Gyro Program Box



Product Information

The GPB-1 is a software update function available in version 4.3 of the product. It can be updated from a PC using either CIU-2 or CIU-3.

Product Usage Instructions

1. Connect the GPB-1 to your PC using either CIU-2 or CIU-3.
2. Ensure that your PC has the necessary software and drivers installed for the GPB-1 update.
3. Launch the software update application on your PC.
4. Follow the on-screen instructions to select the GPB-1 device for updating.
5. Once the GPB-1 device is detected, the update process will begin automatically.
6. Wait for the update to complete. Do not disconnect the GPB-1 during the update process.
7. Once the update is finished, you will receive a confirmation message on your PC.
8. Disconnect the GPB-1 from your PC and proceed to use it as desired.

Note: Ensure that you have a stable internet connection during the update process to avoid any interruptions or errors. It is also recommended to backup any important data on the GPB-1 before proceeding with the update.

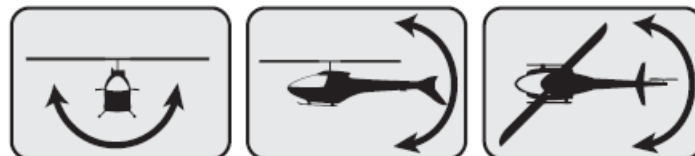
Software Update Functions

GYA 553



CGY760R

CGY755



Software Update Procedure

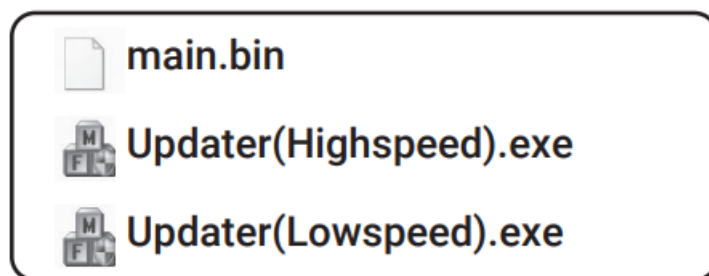
GPB-1 UPDATE

The GPB-1 can be updated from PC using CIU-2 or CIU-3.

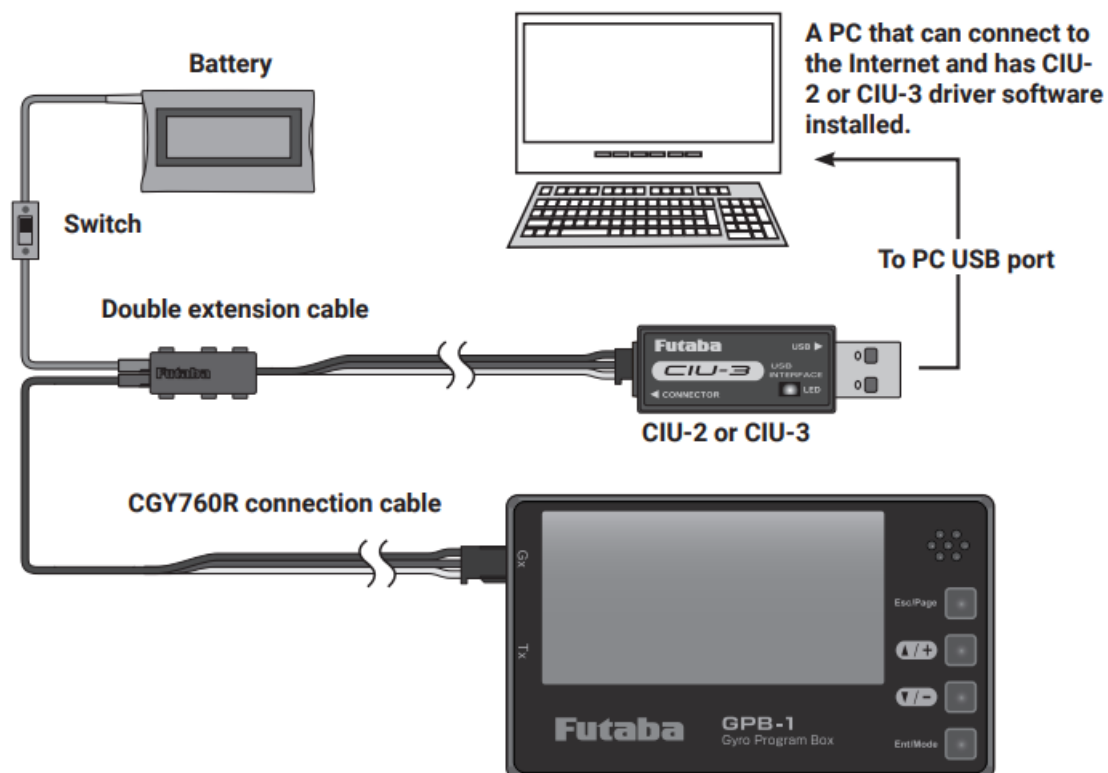
* The following optional products are required for the update.

- CIU-2 or CIU-3
- Cable for CGY760R / GY701 / GY520 or DSC cable for update
- Receiver battery

1. Download the CGY760R update file from our website or your local distributor's website.
2. Extract the zip file on your computer.

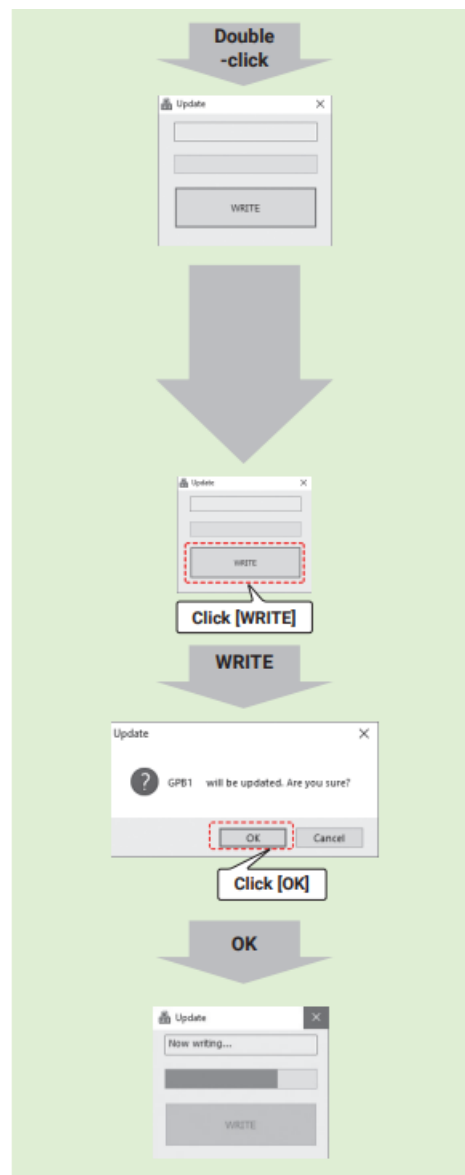


3. Connect as shown in the figure.

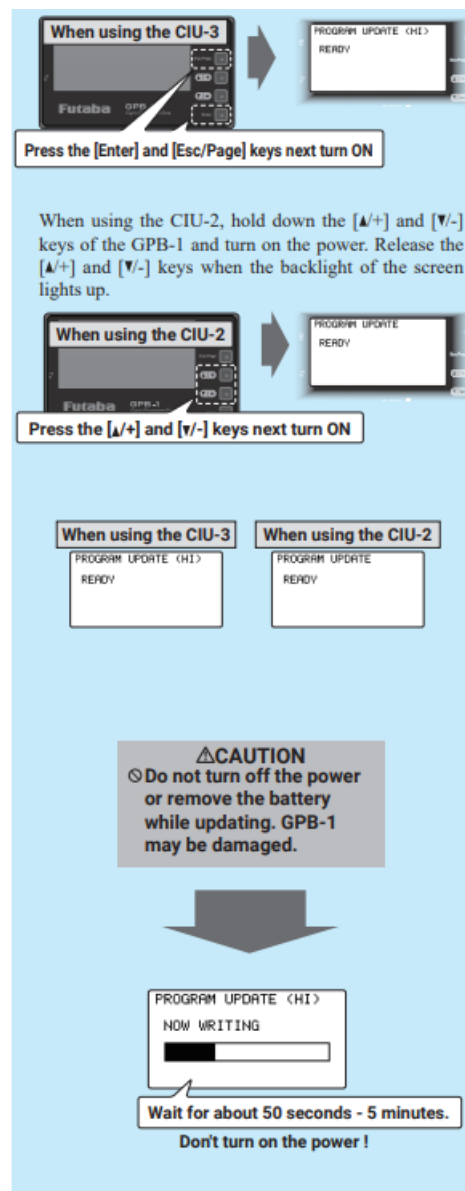


PC side

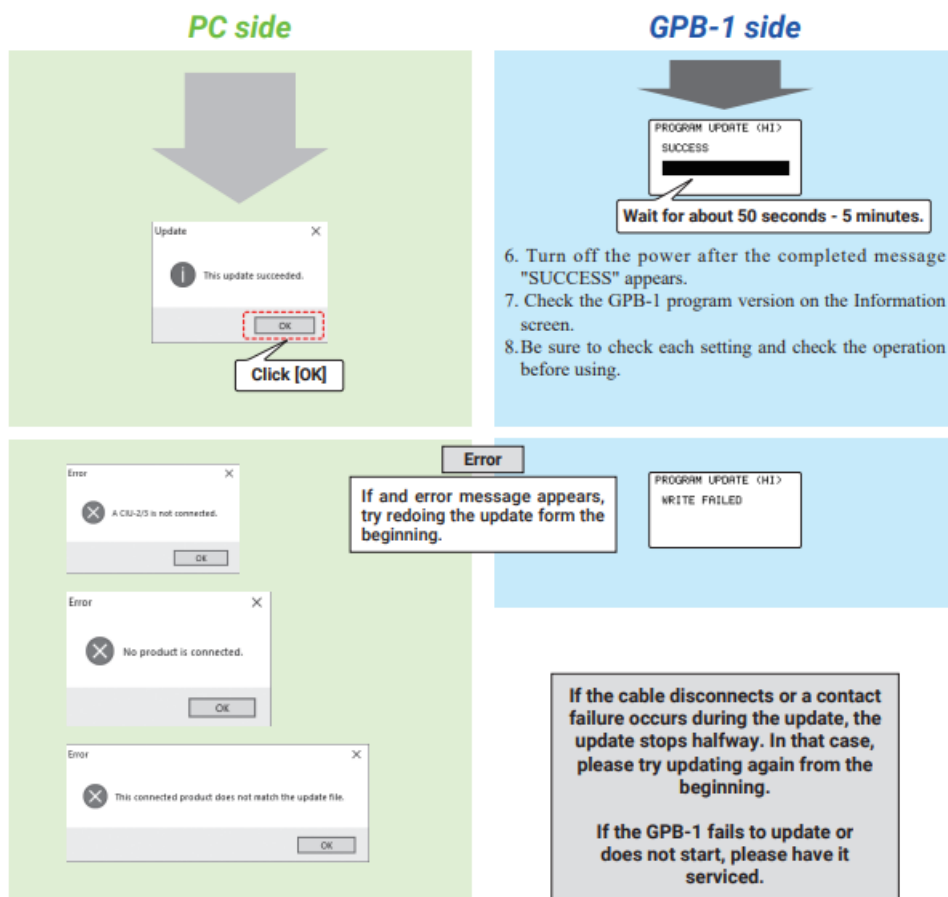
4. Start an executable file by a PC.



5. When using the CIU-3, hold down the [Enter] and [Esc/Page] keys of the GPB-1 and turn on the power. Release the [Enter] and the [Esc / Page] keys when the backlight of the screen lights up.



6. Turn off the power after the completed message "SUCCESS" appears.
7. Check the GPB-1 program version on the Information screen.
8. Be sure to check each setting and check the operation before using.



Ver.4.3

Supported servo type change of HPS-HC701 and HPS-H700.

Ver.4.2

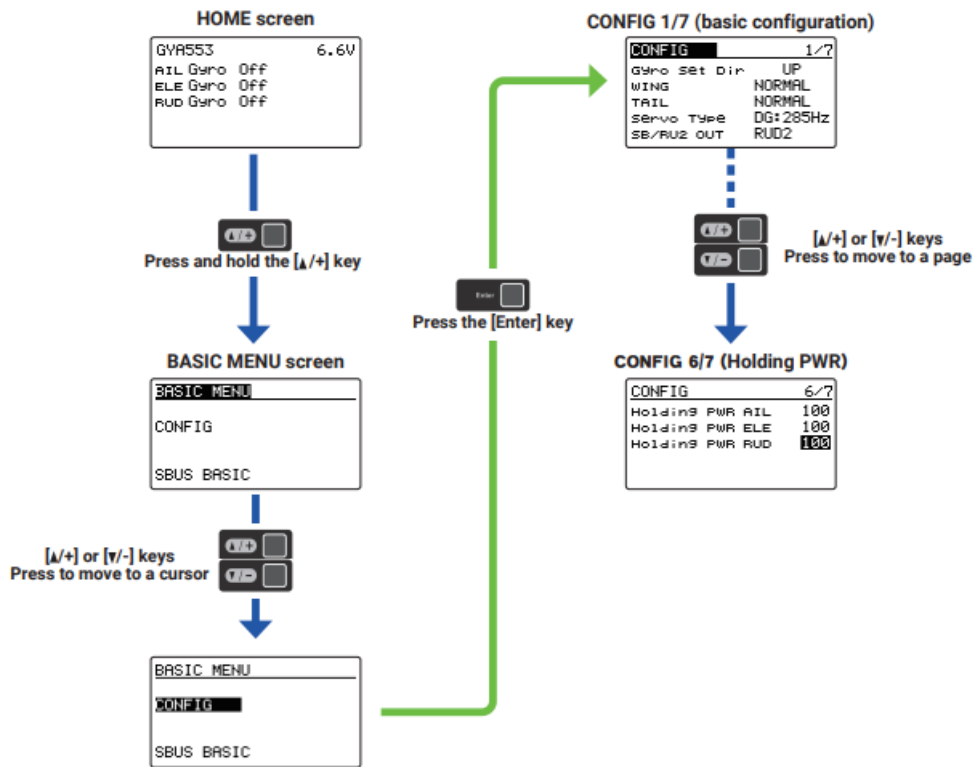
Added function of gyro GYA553 for airplane

1. Added Aileron 3/Aileron 4.
2. S.BUS(HS)-SV servo and S.BUS(STD)-S3175HV, DLPH-1, etc. can be selected with SB/RU2 output (S.BUS output).

Ver.4.1

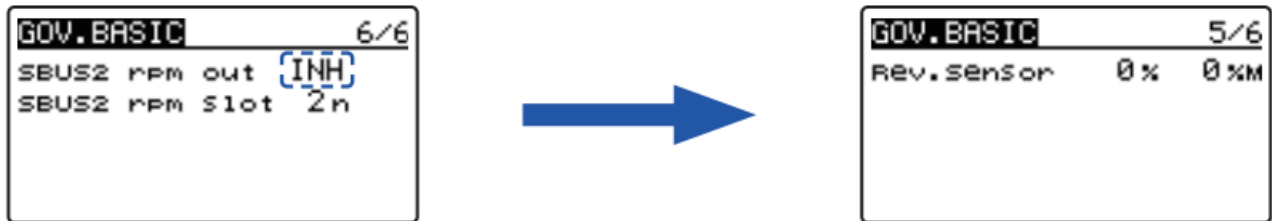
GYA553 – – Added AIL / ELE / RUD “Holding PWR” setting to parameter setting

You can adjust the attitude holding force of the aircraft in AVCS mode. Decreasing the value weakens the holding power and makes the operation feeling closer to the normal mode.



CGY760R / 755 – – GOV Basic Menu 5/6 “Rev. Sensor” screen

Even if the “SBUS 2rpm out” setting is set to INH in the GOV basic menu 6/6 of the CGY760 / 755, the rotation speed sensor test is now possible on the “Rev. Sensor” screen.



Documents / Resources

	Futaba CIU-2 Gyro Program Box [pdf] Instruction Manual CIU-2 Gyro Program Box, CIU-2, Gyro Program Box, Program Box, Box
--	---