



FURUNO TZTL12F Multi Function Display User Manual

[Home](#) » [FURUNO](#) » FURUNO TZTL12F Multi Function Display User Manual

FURUNO TZTL12F Multi Function Display User Manual



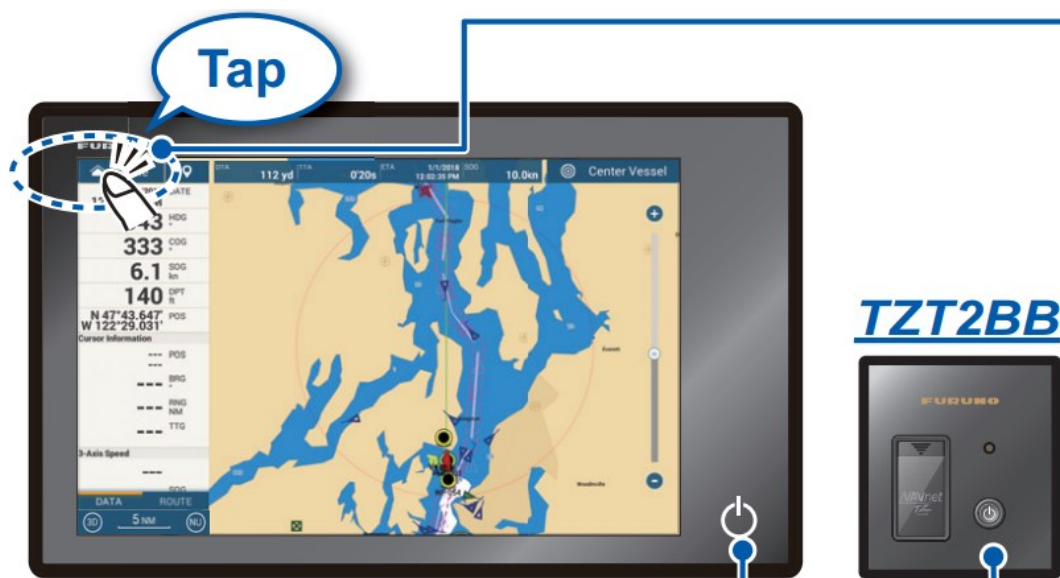
This guide provides the basic operating procedures for this equipment. For detailed information, see the Operator's Manual on the CD-ROM. You can get the latest version of the manual by accessing the quick response code at the bottom of this page. Connection of sensors required. iPhone, iPod and iPad are trademarks of Apple Inc. Android is a trademark of Google Inc. All brand and product names are trademarks, registered trademarks or service marks of their respective holders. The screenshots used in this guide were mainly taken from the TZTL15F. On-screen appearance for the TZT2BB may differ slightly, depending on the monitor used

Contents [[hide](#)]

- 1 Operational Overview
- 2 Chart Plotter
- 3 Radar
- 4 ARPA Operation
- 5 AIS (Automatic Identification System)
- 6 Fish Finder
- 7 Instrument Display
- 8 Wireless LAN Settings
- 9 Documents / Resources
 - 9.1 References
- 10 Related Posts

Operational Overview

Icon (home/displays), power switch operations



Power off

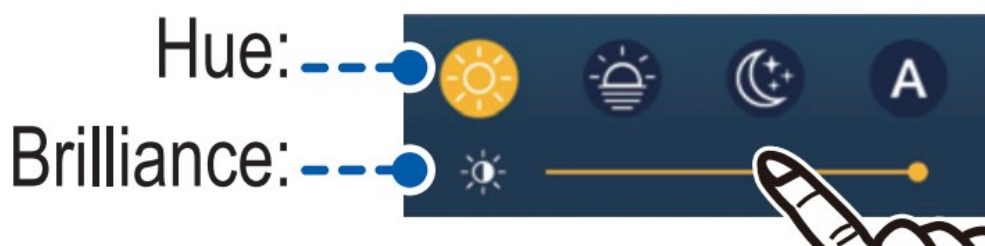
Device: Powers off this unit.

Network: Powers off all
NavNet TZtouch2 units in network

Brilliance, Hue

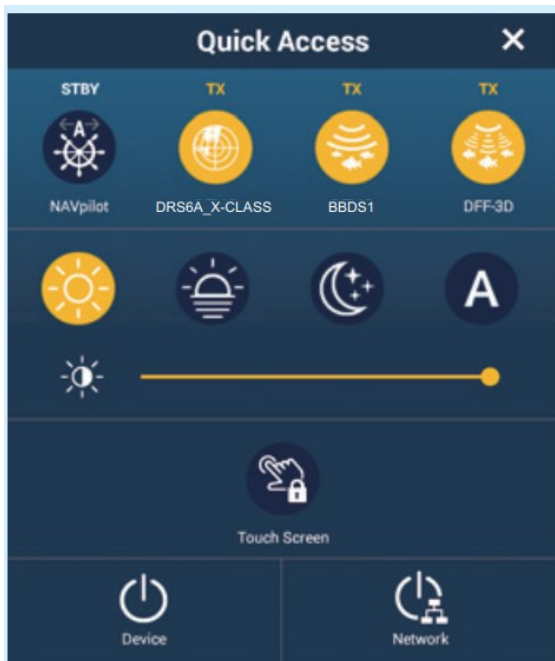
TZTL12F/15F: Adjust display brilliance.

TZT2BB: Adjust power lamp and key backlight brilliance.



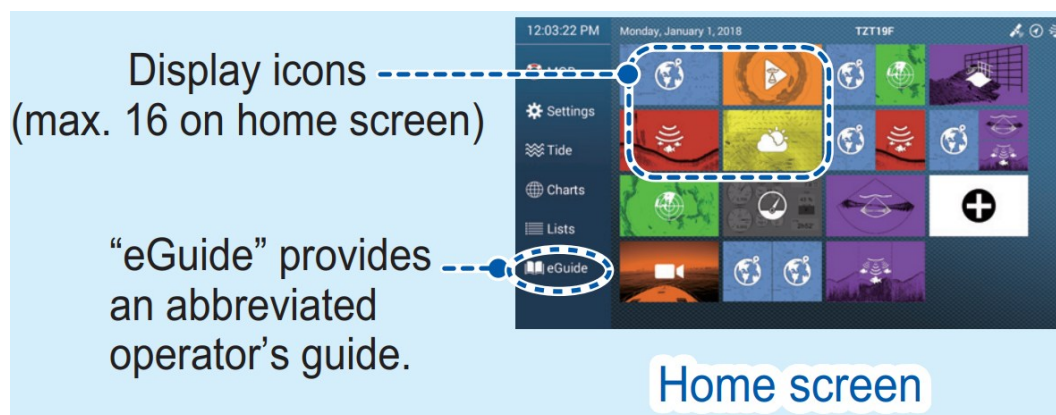
Power switch

- Turns on power.
- Shows [Quick Access] window.



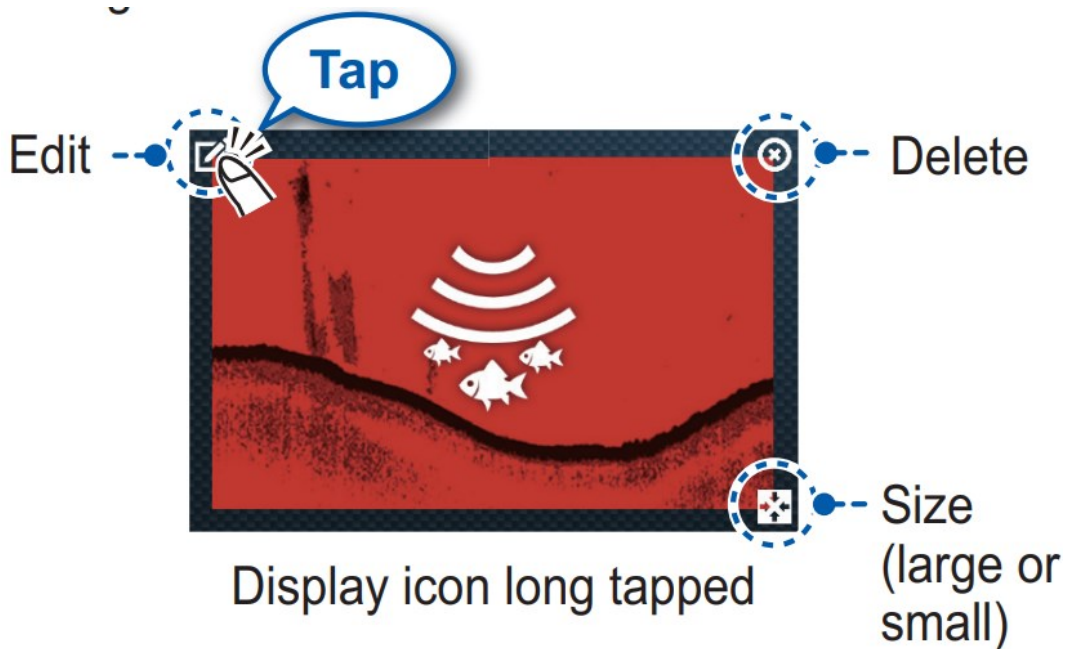
Home icon

Displays the home screen



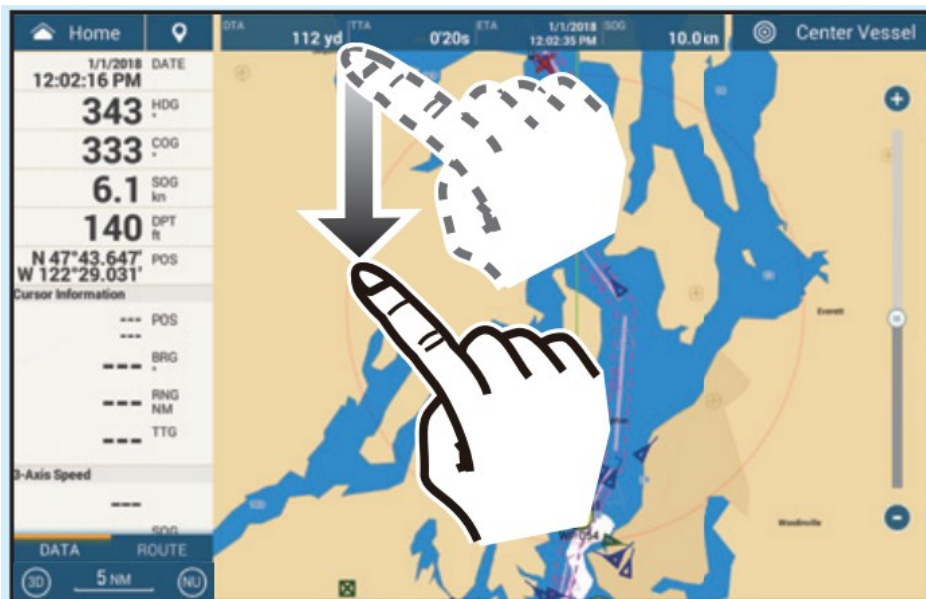
How to edit a display icon

Long tap a display icon to edit, delete, resize, or change its location.



How to select a display

- Tap a display icon on the home screen (see illustration above).
- Tap a display icon on the Quick page.



Swipe downward from top of display



Operator's Manual

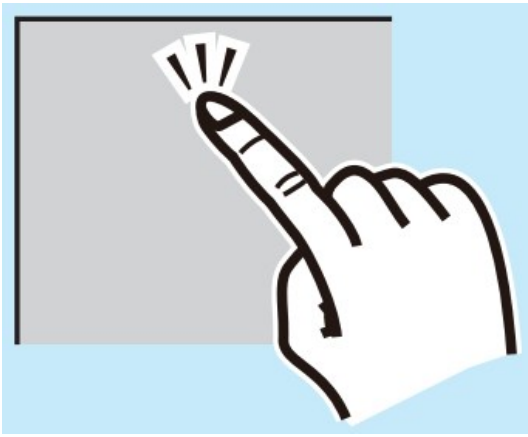
Download Link



Touchscreen operations

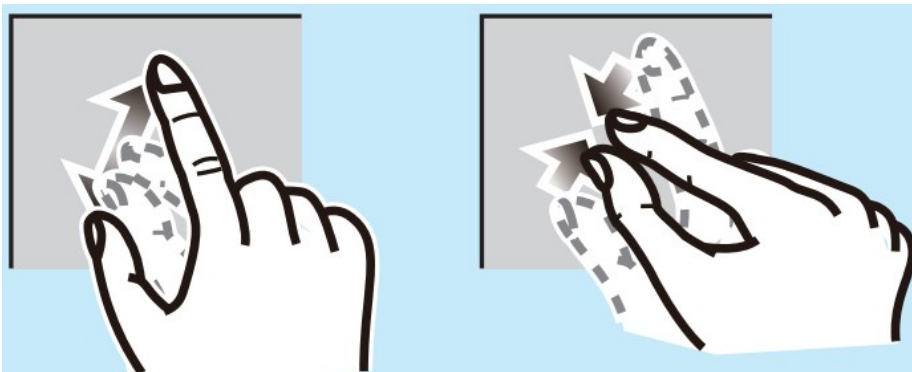
Tap

- Select an item on a menu.
- Tap the display or an object to show the corresponding pop-up menu

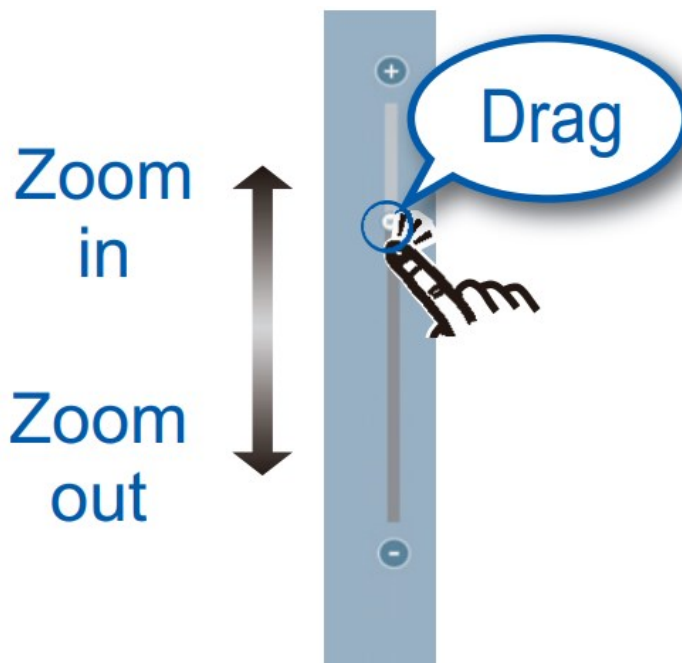


Pinch

- Zoom in, zoom out the plotter and weather displays.
- Change the range on the radar display, fish finder display.

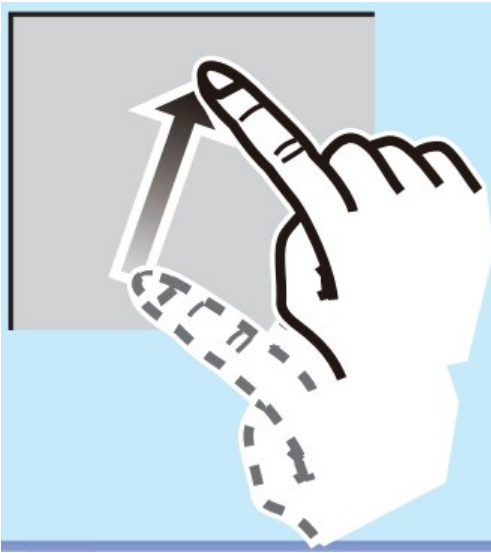


- Tap operation also available.



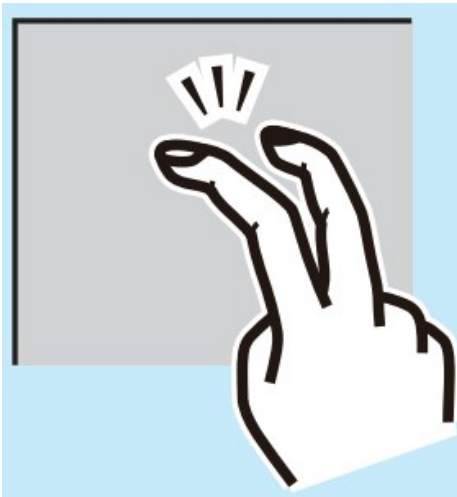
Drag, swipe

- Move the chart.
- Scroll the menu.
- Show Slide-out menu, Layers menu



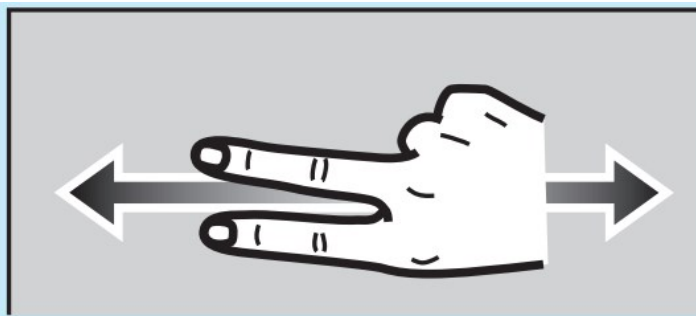
Two finger tap

Do the function assigned to [Two Finger Tap Function] in the [Settings] – [General] menu.



Two finger drag

Change the viewpoint position on the 3D display



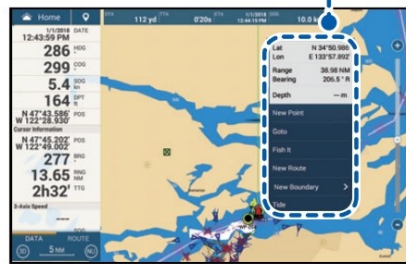
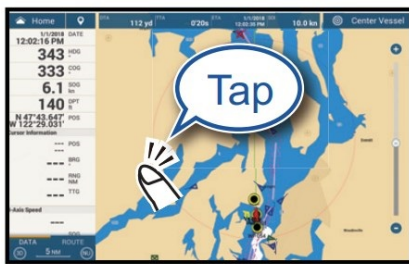
Menu operation

Tap screen (applicable point, object, etc.)

Tap the required function. (">" indicates additional options.)

Pop-up menu

Pop-up menu



Slide-out menu

Swipe leftward from the right edge.

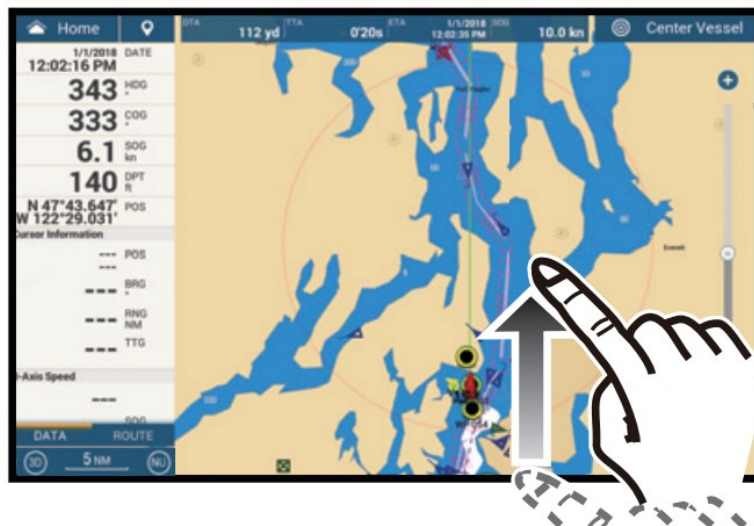
Icon color and function state

Yellow: ON, **White:** OFF

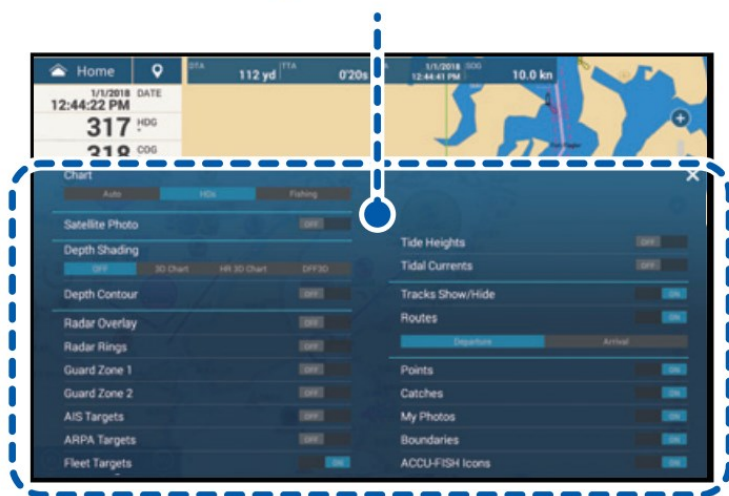


Layers menu

Swipe upward from the bottom edge.



Layers menu



Tap the required function.

Settings menu

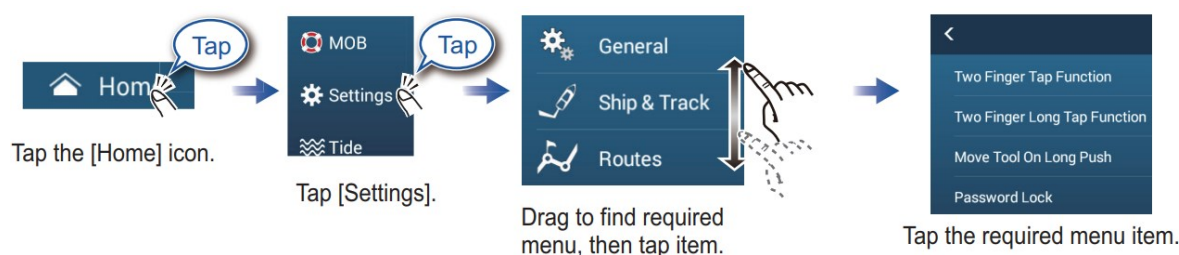
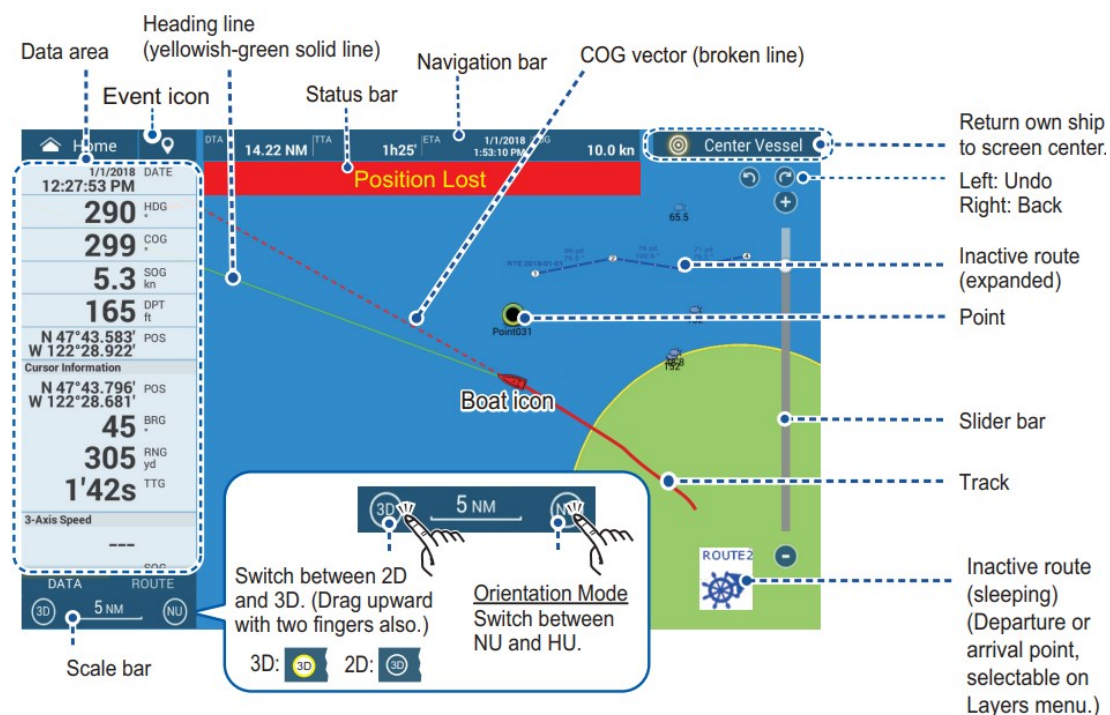


Chart Plotter

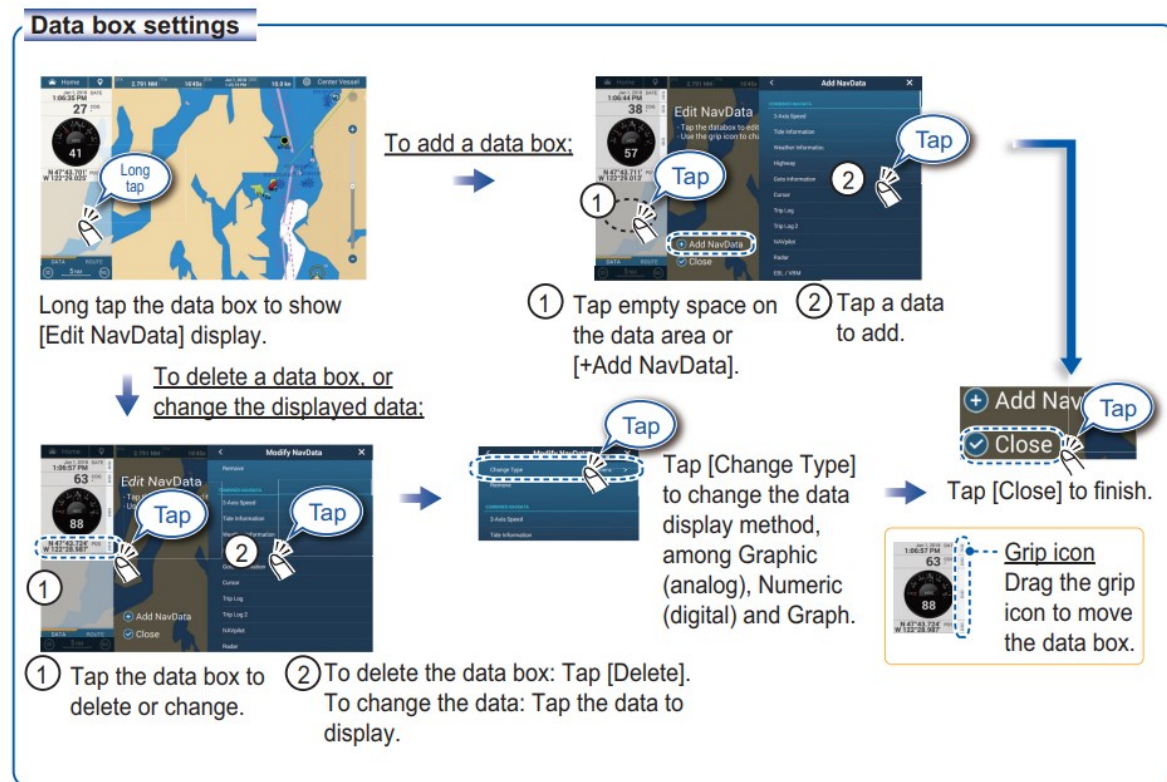


Data Area (Data Box)

Swipe from the left edge of the screen rightward to show navigation data in the data area at the left edge of the screen.

To hide the data area, swipe the data area leftward or tap the [NavData] indication (yellow) in the Slide-out menu

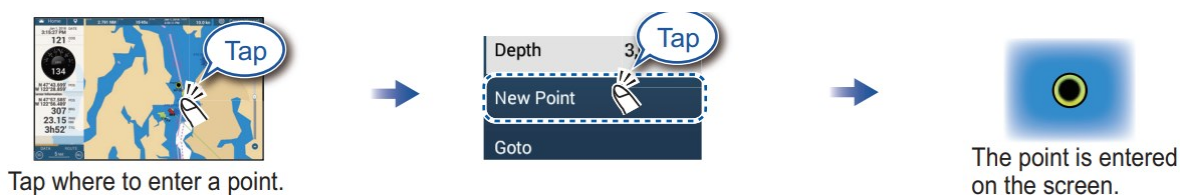
Data box settings



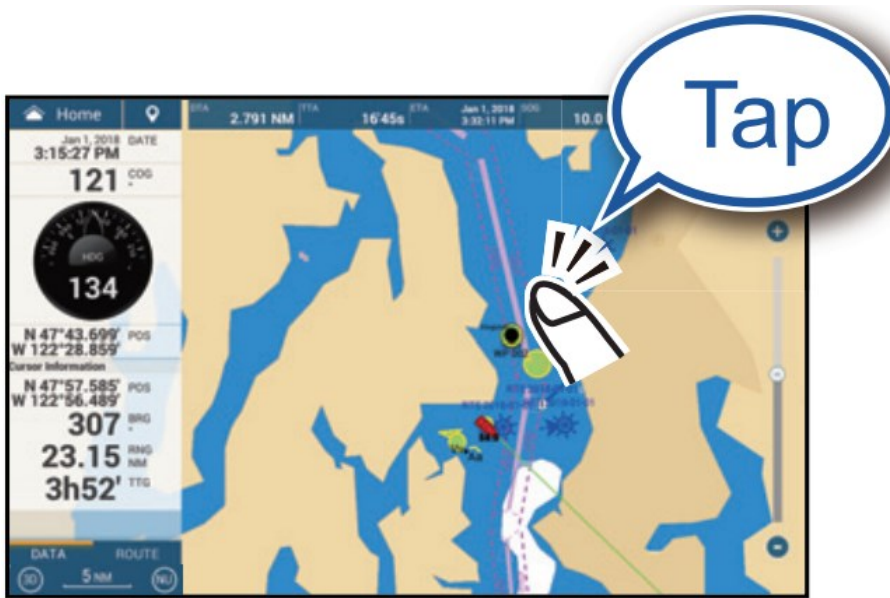
Points/boundaries

Points can be entered on the chart plotter display (radar, fish finder and weather displays also) to mark important locations such as a good fishing spot. Point attributes (position, symbol type, color, etc.) are recorded to the points list. Also, boundaries can be set at the position desired (net position, area to avoid, etc.)

How to enter a point

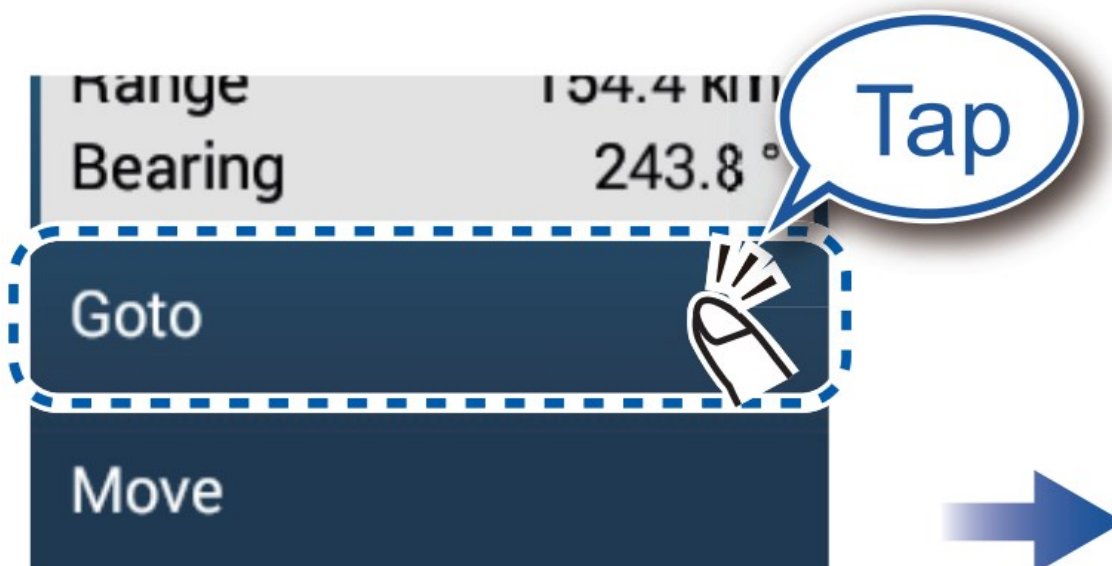


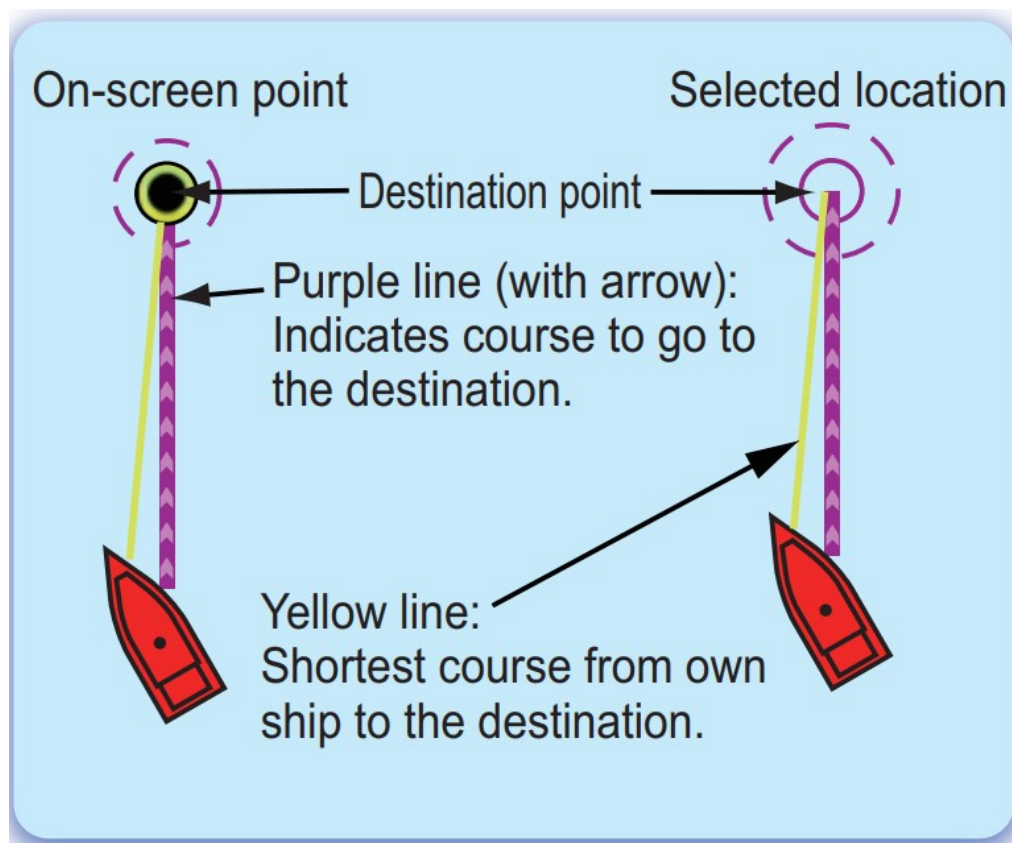
How to set a point as destination



Tap a point or the location to set as destination.

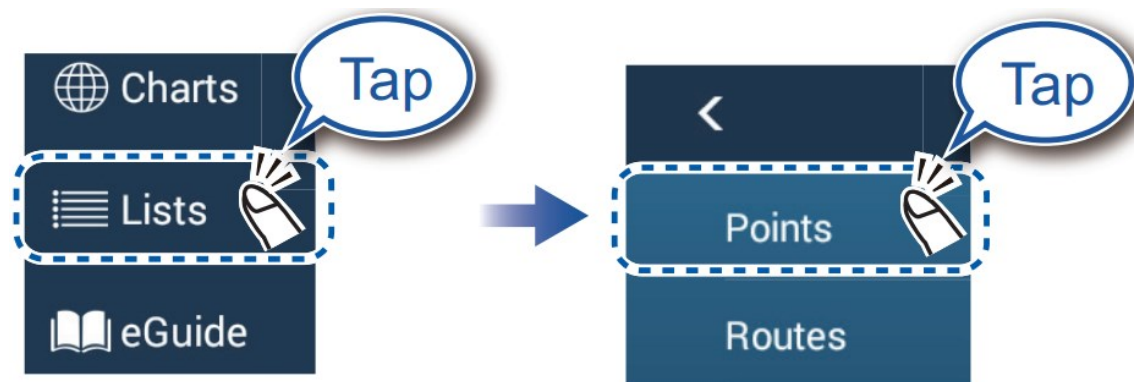
If a point was tapped.





Points list

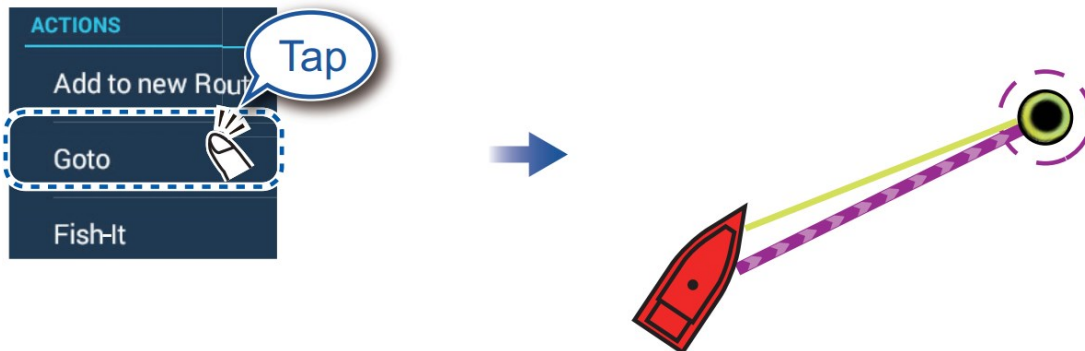
Tap [Lists] on the home screen.



Sort the list by date, name, icon, color, range.

	Date	Name	Icon	Color	Range
TODAY					
	1/1/2018	GOTO2			5.116 NM
	1/1/2018	GOTO1			9.392 NM
	1/1/2018	POINT4			27.71 NM
	1/1/2018	FISH4			21.64 NM
	1/1/2018	FISH3			28.67 NM
	1/1/2018	POINT3			18.35 NM
	1/1/2018	WP 004			33.94 NM
	1/1/2018	WP 003			69.14 NM
	1/1/2018				

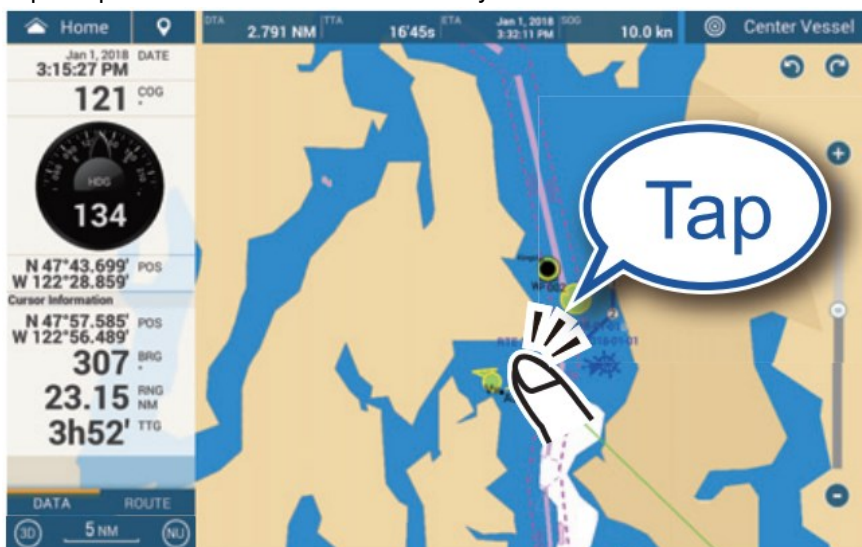
Tap the point to set as the destination.

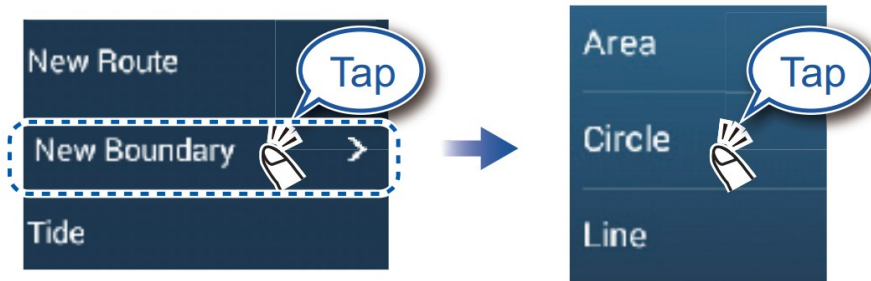


Note: [Find on Chart] puts the selected point at the screen center.

How to set a boundary

Tap the position where to set a boundary





Tap the shape to use for the boundary.

Area]/[Line]: Tap necessary points to complete the boundary, referring to “Route” on the.

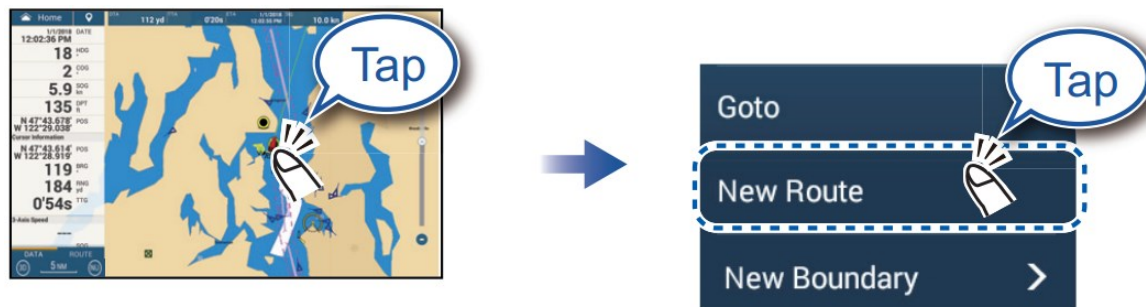
[Circle]: Drag icons to adjust the size and position, and then tap [End Boundary

Routes

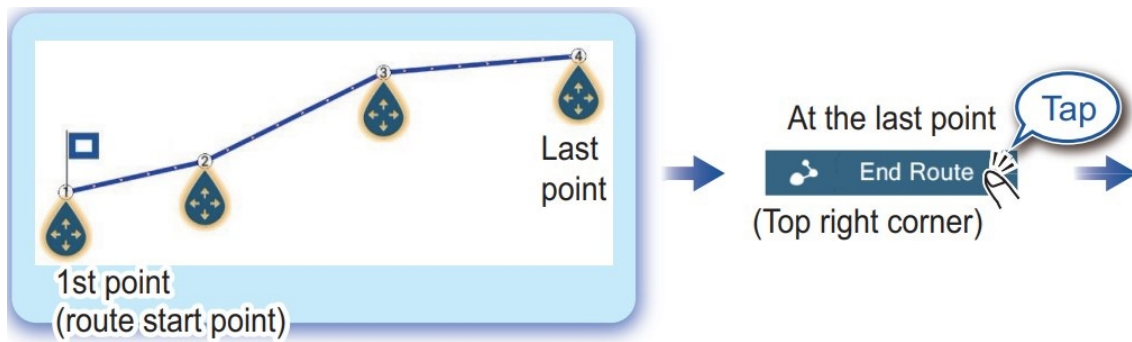
A route is comprised of a series of waypoints leading to a destination. Routes are saved to the routes list

How to create a new route

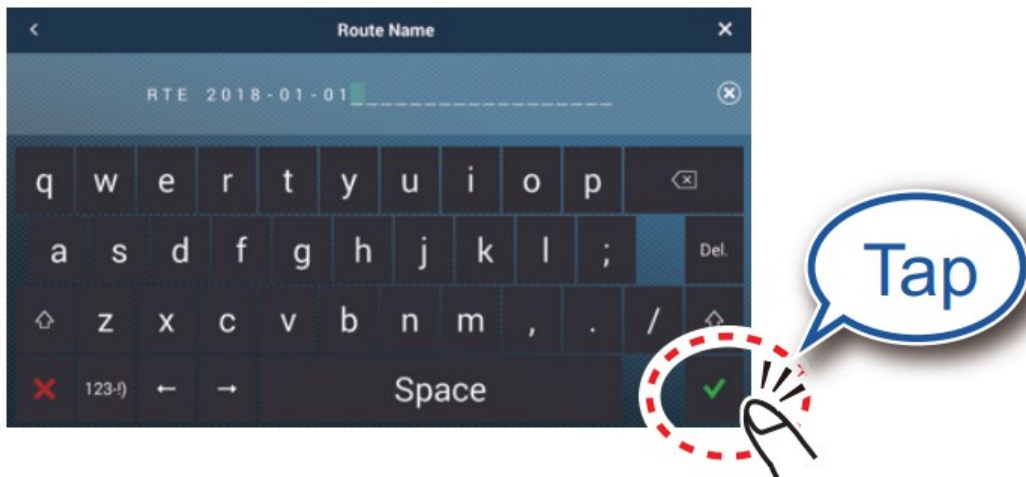
Tap the first point for the route.



Tap the next point for the route. Repeat to enter all points for the route.

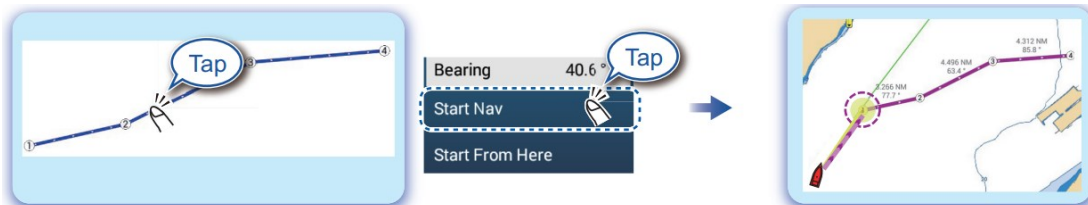


Enter a name for the route, then tap.



How to follow a route

On-screen route



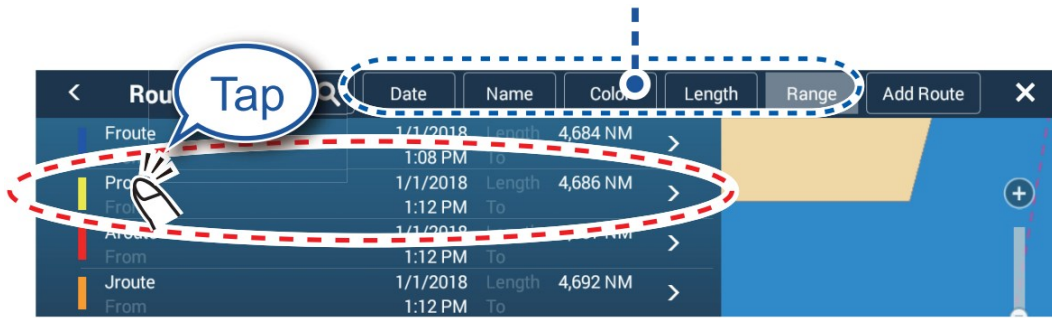
Tap a leg of the route.

Routes list

Home screen



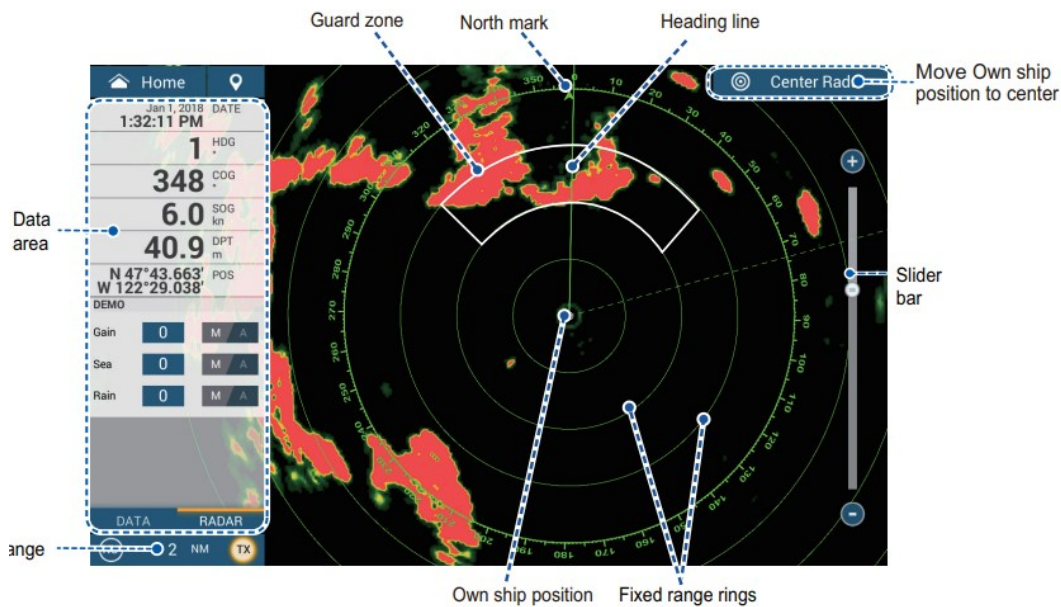
Sort list by date, name, color, length, or range.



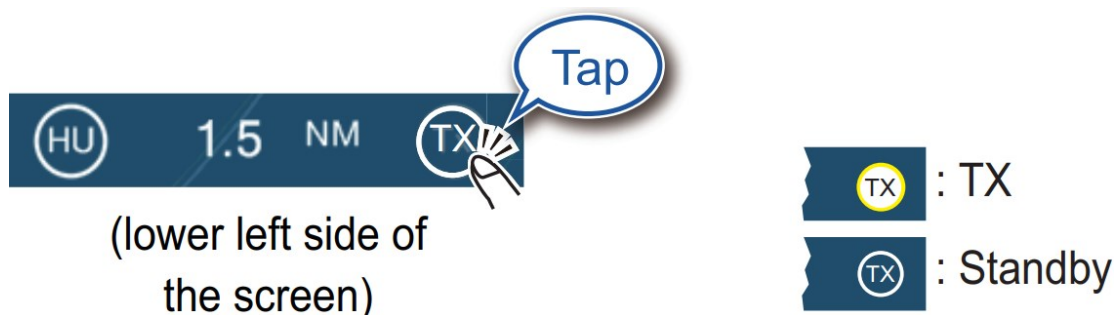
Tap the route to use.



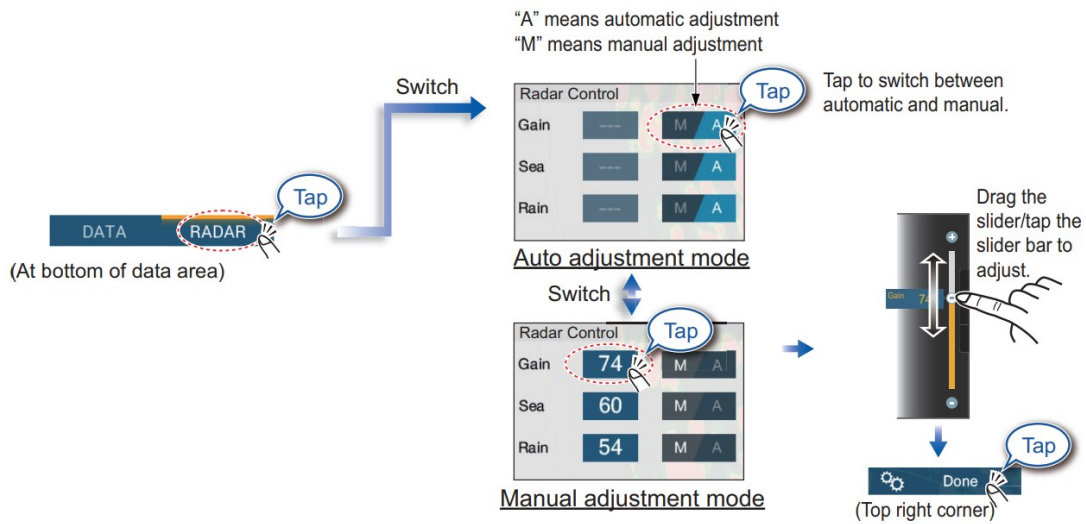
Radar



How to switch between standby and TX



How to adjust the gain / sea clutter / rain clutter



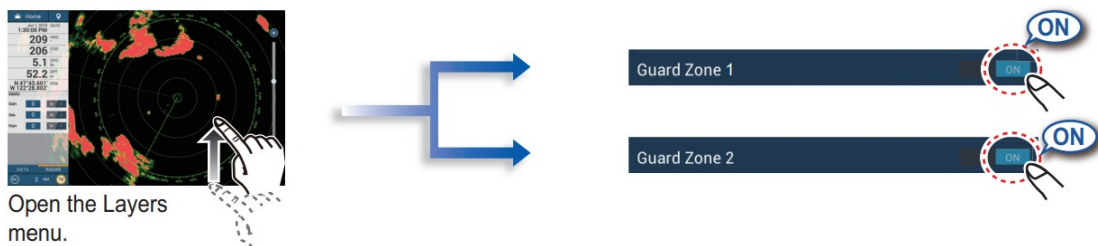
How to measure the range, bearing from own ship to a target

Tap a target to show its range and bearing from own ship



How to set a guard zone

A guard zone alerts you (with aural and visual alarms) when a radar target enters the area you specify.



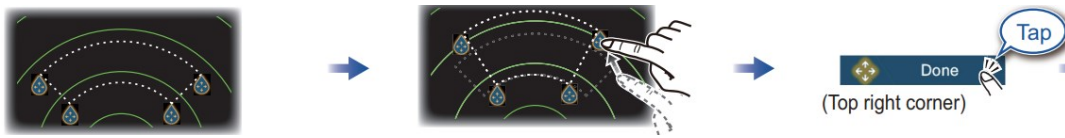
The guard zone appears in dashed lines.

Tap dashed line on guard zone.



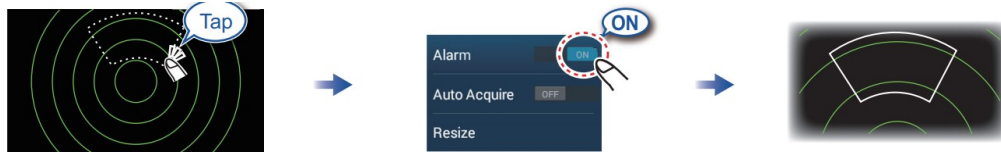
An icon appears at each corner of the guard zone.

Drag the icons to set guard zone.



Tap the guard zone again.

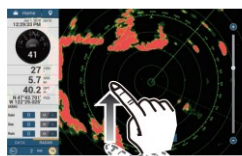
The dashed lines change to solid lines, indicating the guard zone is active.



ARPA Operation

ARPA is an anti-collision aid that tracks the movement of other ships to help prevent collision. ARPA not only tracks other ships but also provides their navigation data. Targets can be acquired manually, automatically, or both automatically and manually.

How to show, hide ARPA symbols



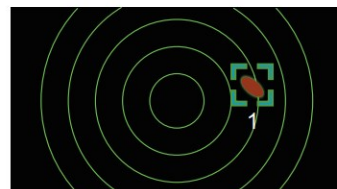
Open the Layers menu.



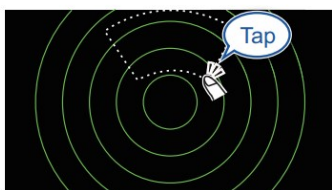
How to manually acquire a target



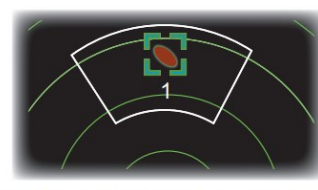
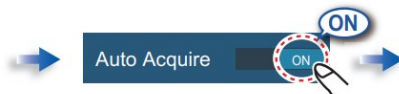
Tap the target to acquire.



Automatic target acquisition



Set a guard zone, then tap the guard zone.



The dashed lines change to solid lines, indicating the guard zone is active.

ARPA symbols



At acquisition

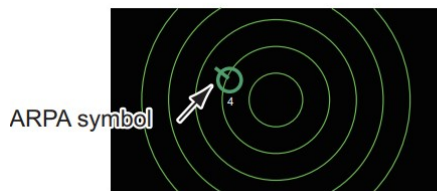


Within 30 seconds
after acquisition

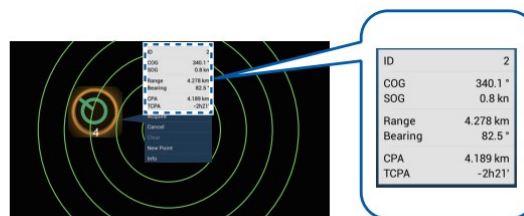


Lost target

How to display target data



Tap an ARPA target to show its data.



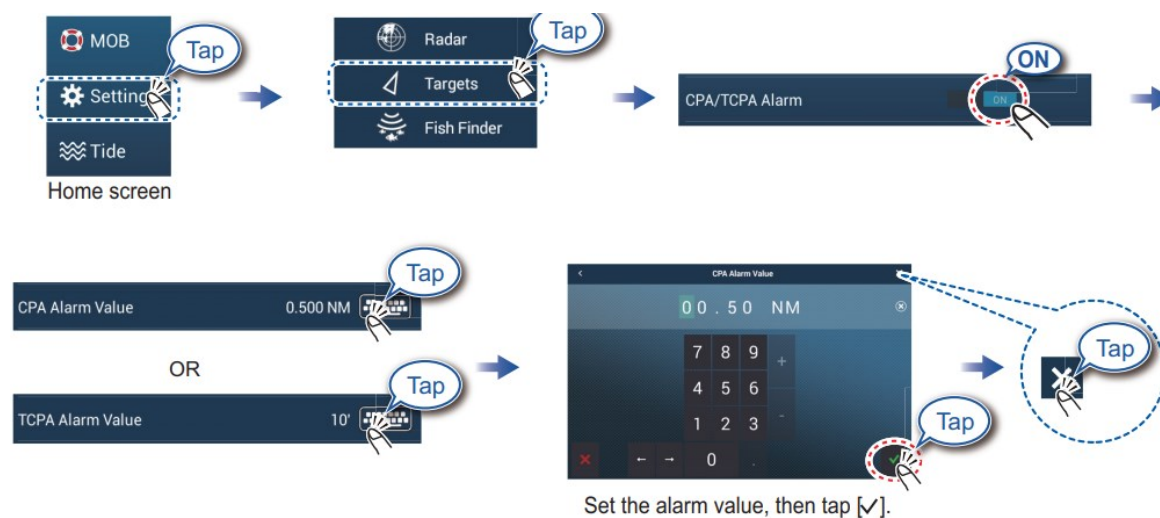
CPA/TCPA alarm

The CPA/TCPA alarm releases an aural alarm and a visual alarm (message in Status bar) when both the CPA and TCPA of a tracked target are equal to or lower than the CPA/TCPA alarm setting.

CPA: Closest point of approach

TCPA: Time to closest point of approach

How to set the CPA/TCPA alarm



How to acknowledge the CPA/TCPA alarm

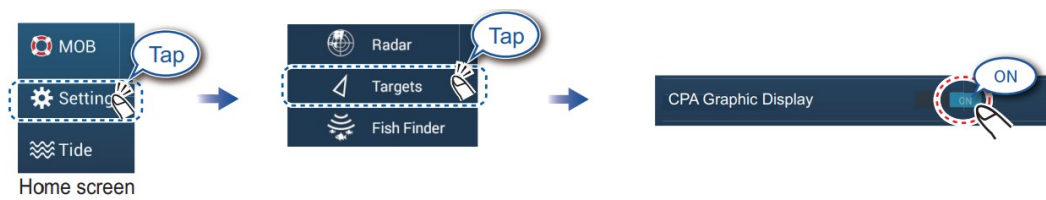
Tap the alarm message (top of screen) to acknowledge the alarm and stop the aural alarm.



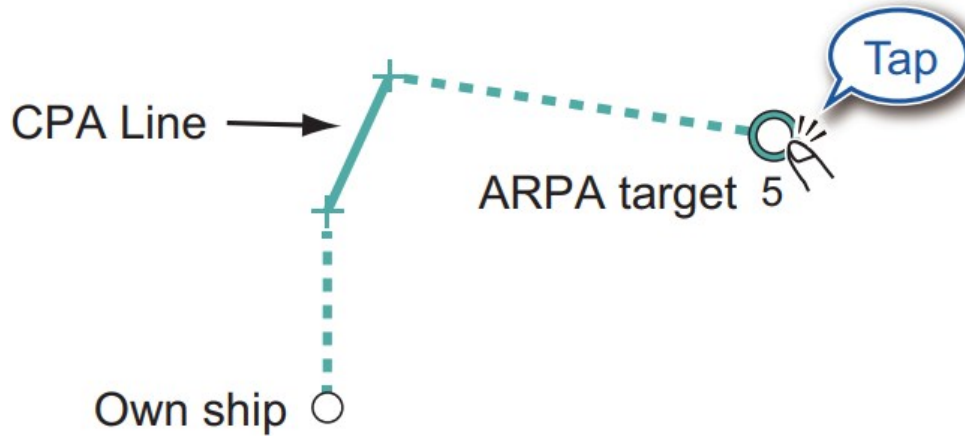
CPA Line

The CPA Line feature gives you a visual line that depicts the closest point of approach to a selected ARPA target. To use this feature, own ship position and heading data is required.

How to enable the CPA Line feature



How to show the CPA Line

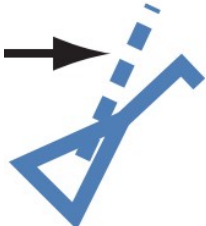
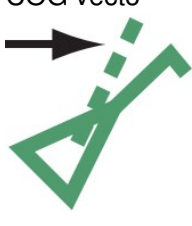







AIS (Automatic Identification System)

How to show or hide AIS target symbols

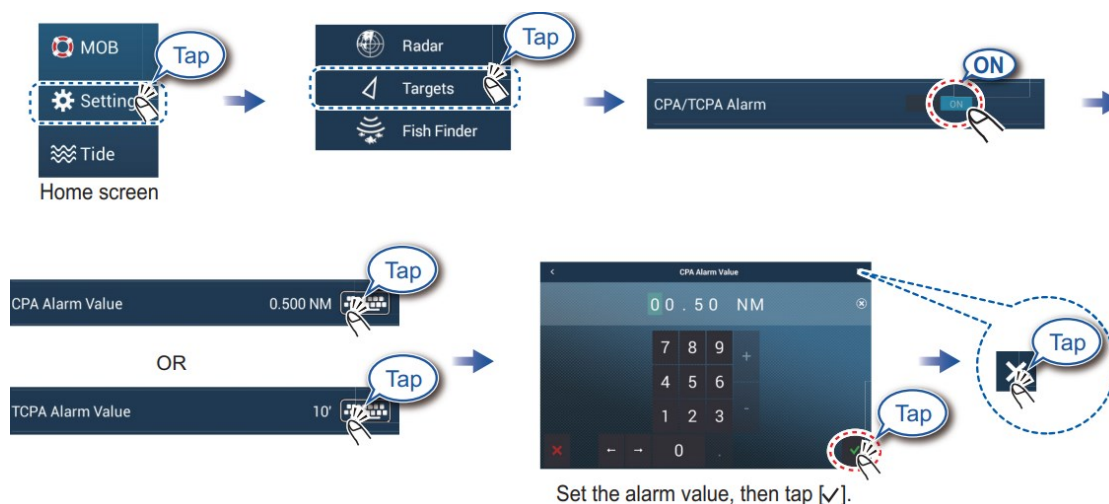


AIS target symbols

	Class A AIS	Class B AIS	BFT* AIS
Activated target	SOG and COG vector  Color: Blue	SOG and COG vecto  Color: Gr	SOG and COG vector  Color: Bl
Dangerous target	 Color: Red		
Lost target	Color  <ul style="list-style-type: none"> • AIS target: Blue • Cross: Red 	Color  <ul style="list-style-type: none"> • AIS target: Green • Cross: Red 	Color  <ul style="list-style-type: none"> • AIS target: Blue (filled) • Cross: Red

Proximity AIS target alarm

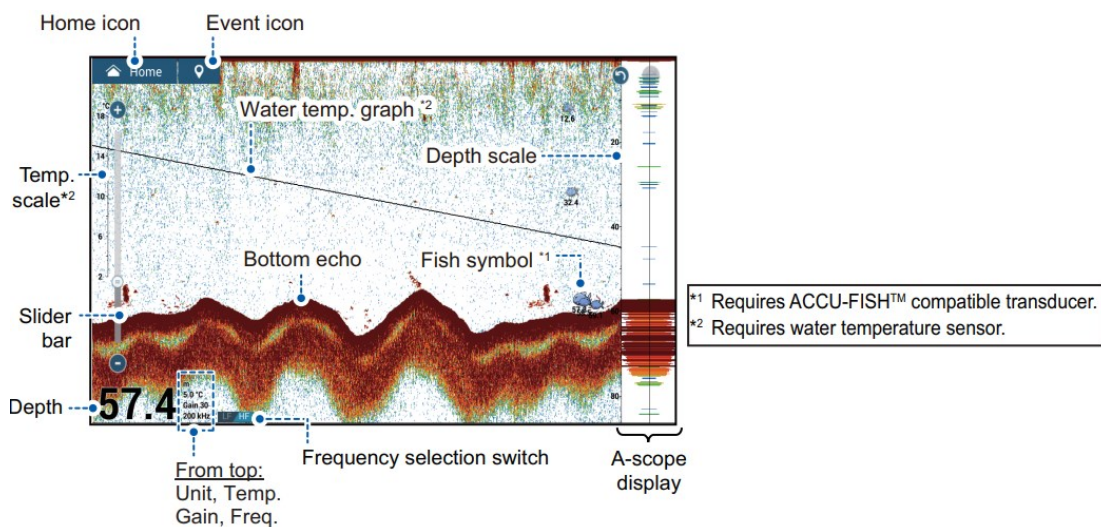
The proximity AIS target alarm releases aural and visual alarms when the distance between own ship and an AIS target is near the alarm value.



How to show AIS target data



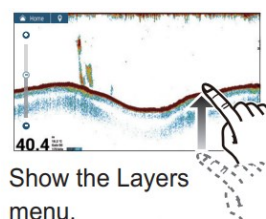
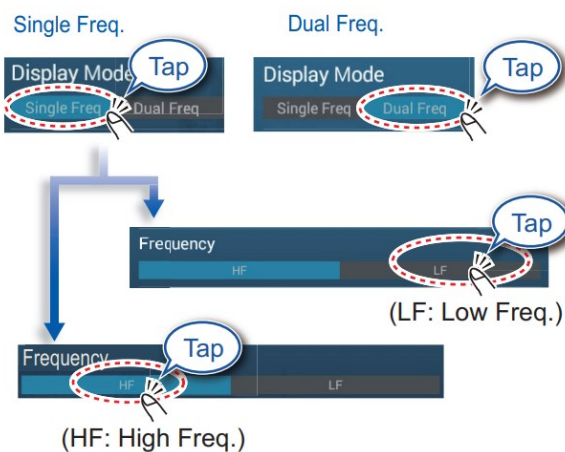
Fish Finder



Note: Names of menu items may be different depending on the transducer connected

How to select a frequency

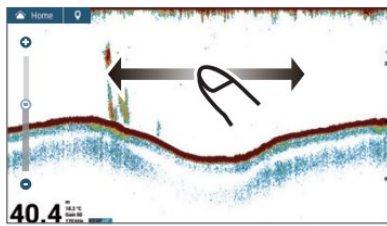
Low frequency: For “normal” use.
 High (Middle) frequency: For detailed observation of schools of fish.
 Dual frequency: Show both the low and high frequency pictures.



Note
 [TX/STBY] toggles between TX and standby.

How to show past echoes (echo history)

Swipe leftward or rightward to show past echoes.



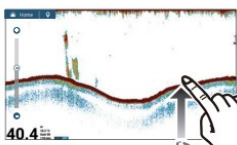
Cancel Hist.

(Top right corner)

Return to normal display.

How to select the operating mode

The fish finder is available in automatic and manual operation. For automatic operation, gain, clutter and TVG are automatically adjusted.



Show the Layers menu.

Gain Mode

Auto Fishing

Auto Cruising

Manual Gain

Auto mode

Auto Fishing

OR

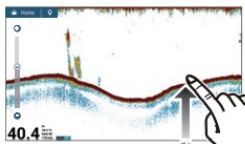
Auto Cruising

Manual mode

Manual Gain

Manual mode

How to change the range



Show the Layers menu.

Display Mode

Single Freq

Dual Freq

Bot. Lock

Bot. Zoom

Marker Zoom

Frequency

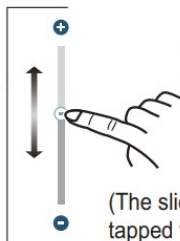
HF

LF

OFF

Auto Range

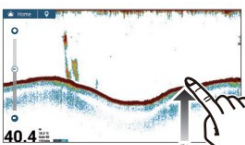
Pinch screen.



Drag the slider bar to set the range.

(The slider bar can also be tapped to set the range.)

How to adjust the gain



Show the Layers menu.

Gain Mode

Auto Fishing

Auto Cruising

Manual Gain

50 kHz Gain

200 kHz Gain

Clutter

Color Erase

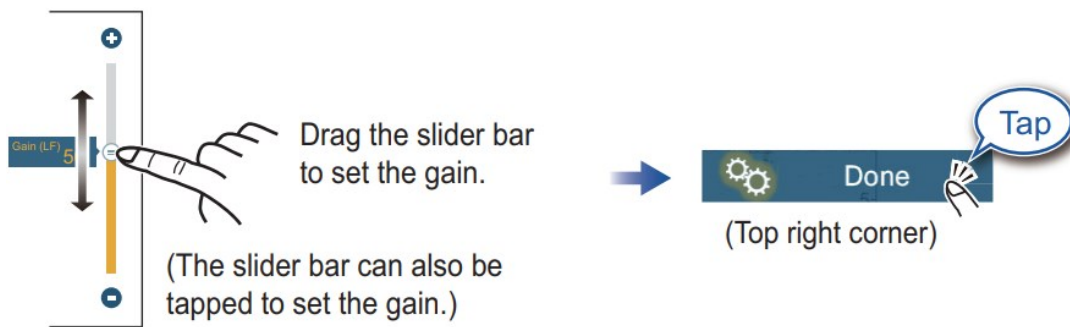
50 kHz TVG

200 kHz TVG

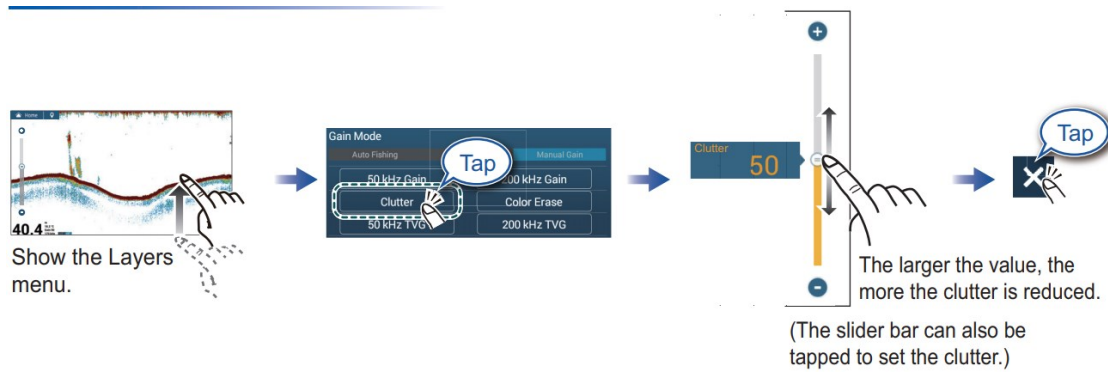
53 kHz Gain

200 kHz Gain

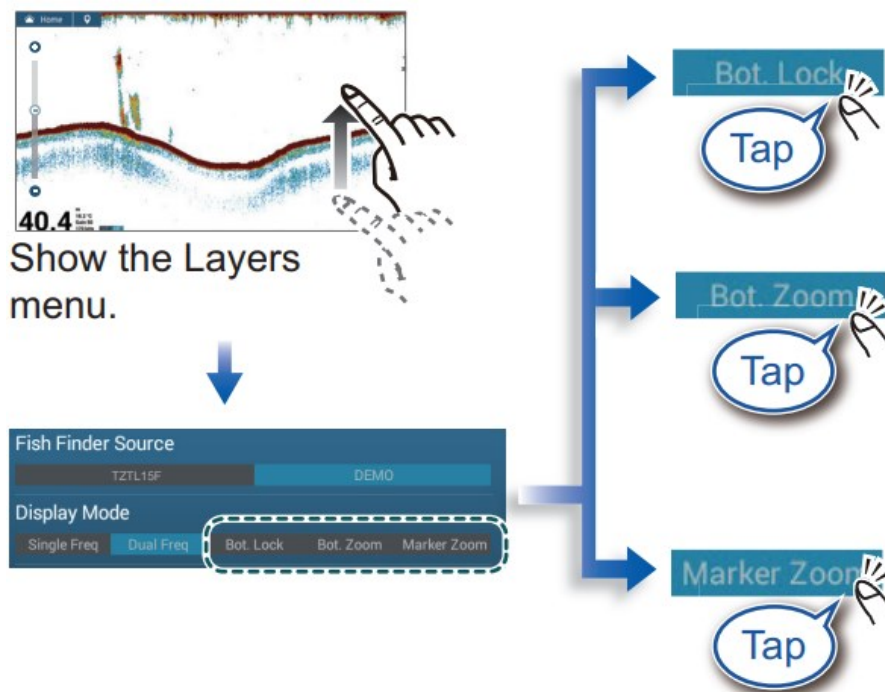
For dual frequency transducer



How to reduce clutter



Zoom display



Bottom Lock

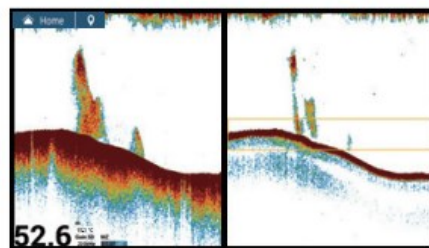
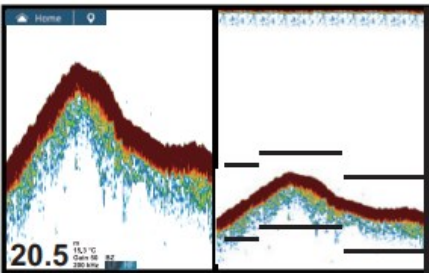
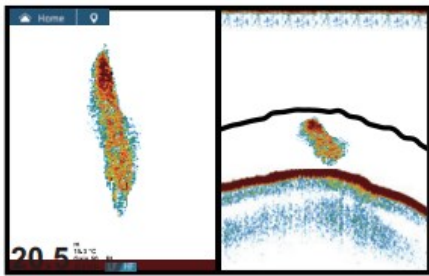
Search for bottom fish.

Bottom Zoom

Find bottom contour and hardness.

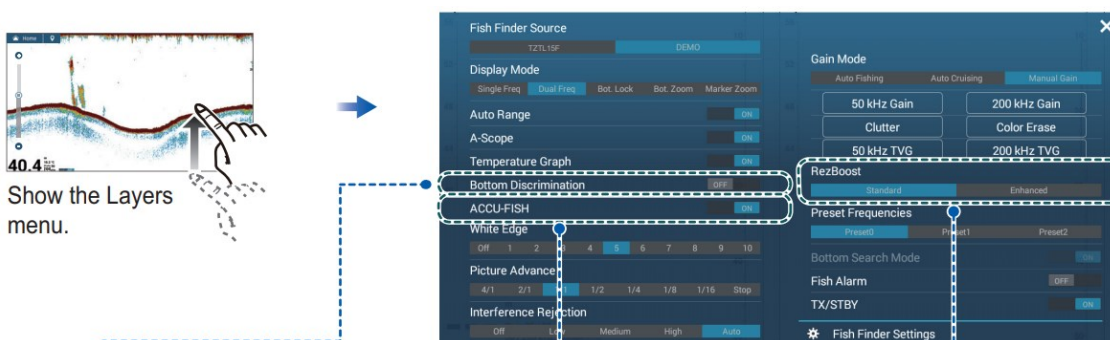
Marker Zoom

- Help determine the size of a school of fish in the middle layer.
- Not available when using the internal fish finder.



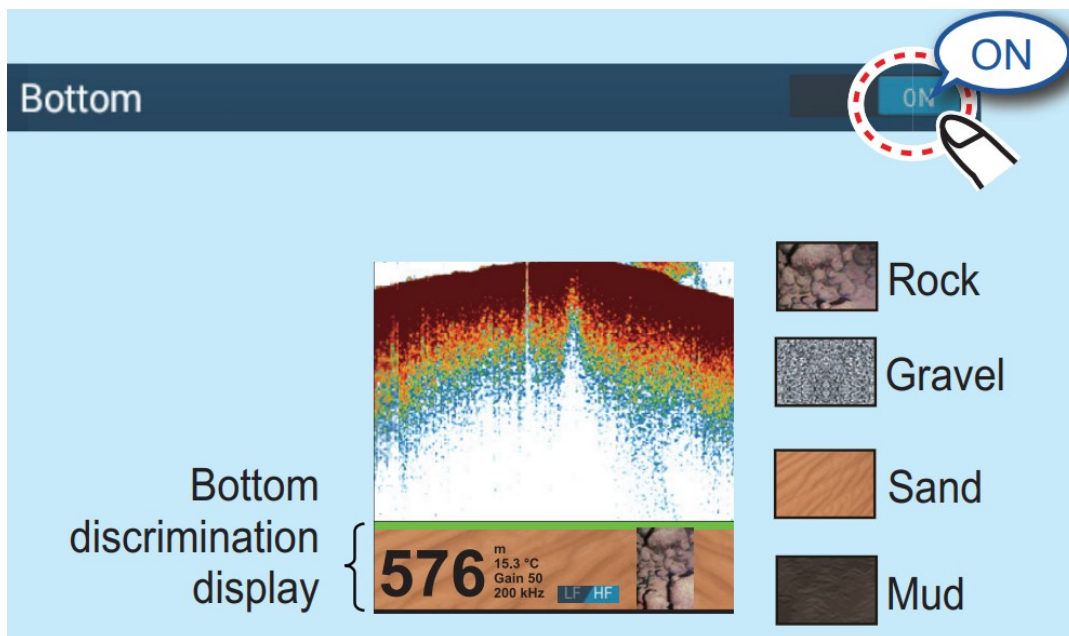
- Short tail indicates soft bottom.
- Long tail indicates hard bottom.
- Zoom zone is shown with an yellow square

ACCU-FISHTM/Bottom Discrimination/RezBoostTM



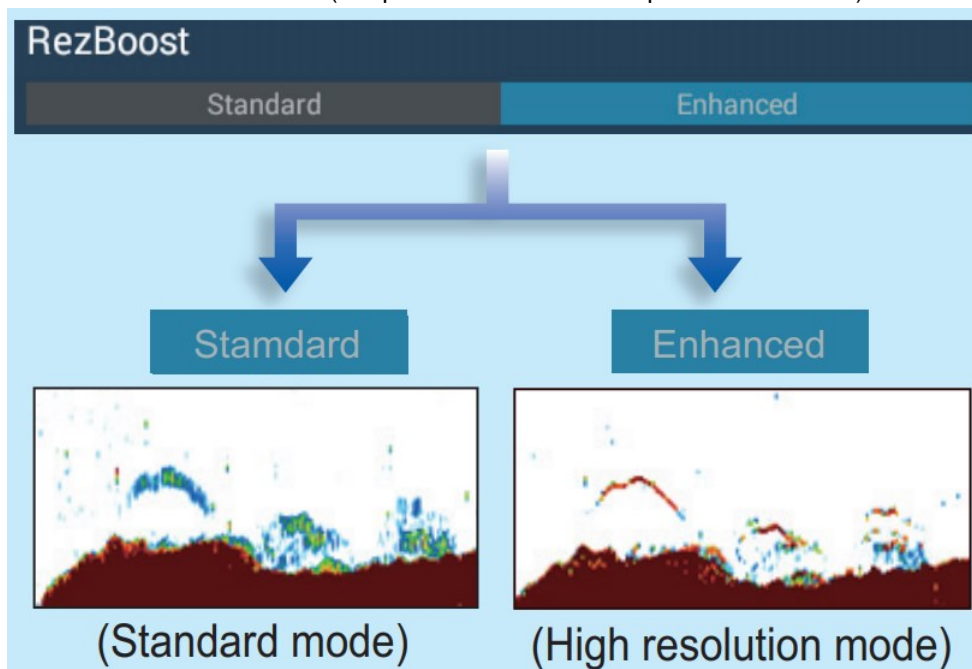
Bottom Discrimination

Show probable bottom hardness.
(Requires bottom discrimination capable transducer.)



RezBoost™

Raise the echo resolution. (Requires RezBoost™ capable transducer.)



ACCU-FISHTM

Detected fish can be marked with a fish symbol. (Requires ACCU-FISHTM capable transducer.)



Notice

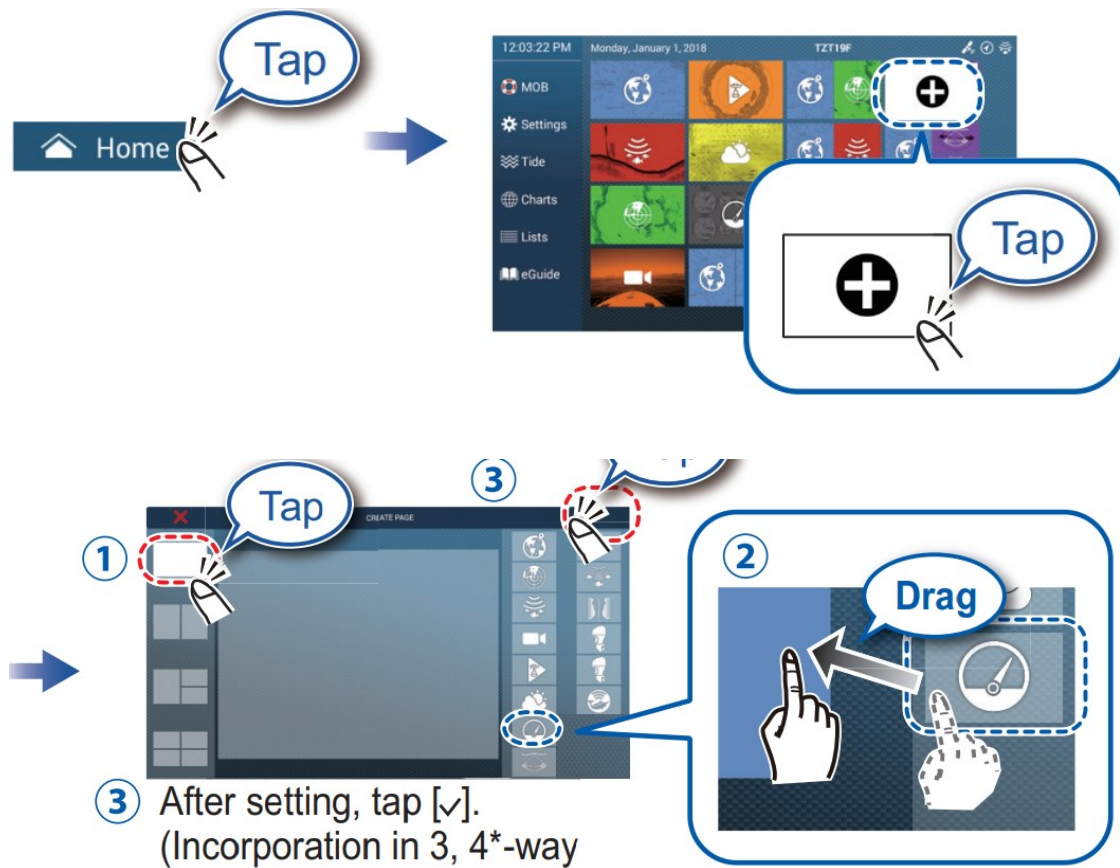
You can select fish symbol type, and fish size or depth indication from the menu – go to home screen, [Settings], [Fish Finder].

Instrument Display

With connection of appropriate sensors, the instrument display shows various navigation data.

How to enable the instrument display

Add an instrument display icon to the home to screen to show the instrument display.



How to switch instrument displays (ex. full display)



Swipe rightward or leftward to switch between displays.



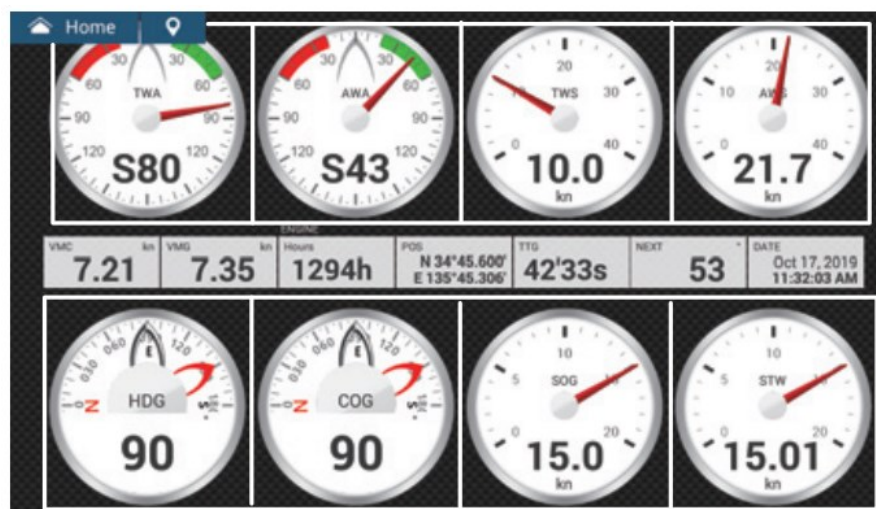
How to edit an instrument display

Tap the instrument display, then tap [Edit Page] on the pop-up menu.



Edit mode

A white line surrounds each indication



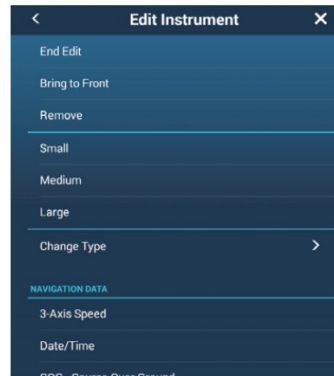
In the edit mode, you can remove, change, add, rearrange indications.

To end the edit mode

Tap the screen, then tap [End Edit] on the pop-up menu.

How to remove or change an indication

In the edit mode, tap the indication to remove or change.



In the edit mode, tap the indication to remove or change.

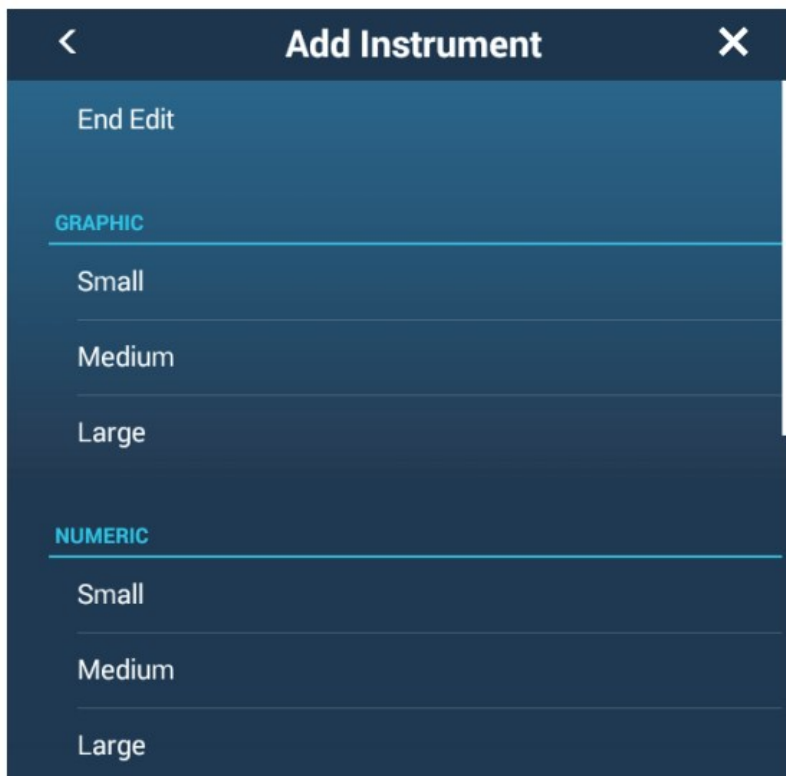
- Remove indication: Tap [Remove].
 - Change size: Tap [Small]*, [Medium], or [Large].
 - Change type: Tap [Change Type], then tap desired size.
 - Change indication: Tap indication in [NAVIGATION DATA], [ROUTE INFORMATION], [WIND AND WEATHER], and [ENGINE].
- Note:** Drag the menu to show hidden items.
- Graphic, digital only

How to add an indication

In the edit mode, tap a location not occupied by an instrument display



Tap a size in desired category.



Tap added instrument display to change displayed data (see above)



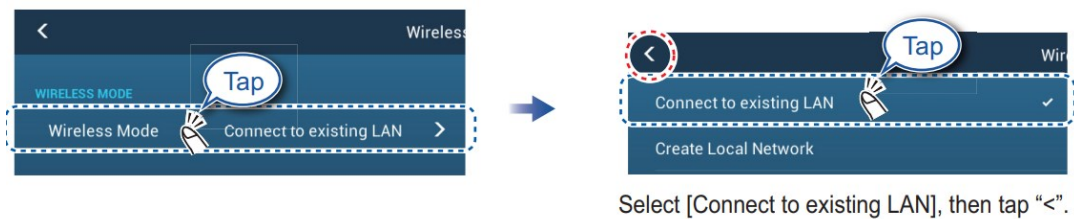
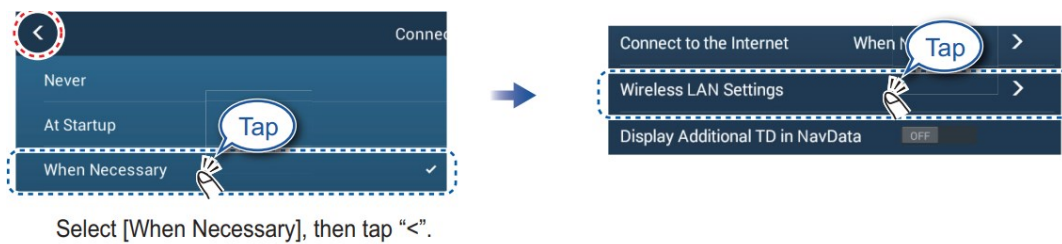
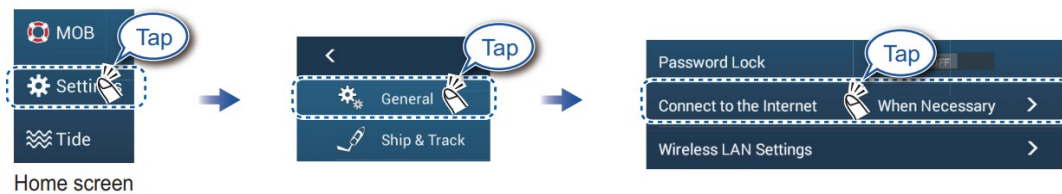
Wireless LAN Settings

You can connect to the internet with the wireless LAN signal to download weather information, update the software and connect to an iPhone, iPod, iPad, or Android™ device, to operate and monitor a NavNet TZtouch2 device.

Note: This procedure is not available from a monitor connected to the HDMI OUT2 port (TZT2BB only).

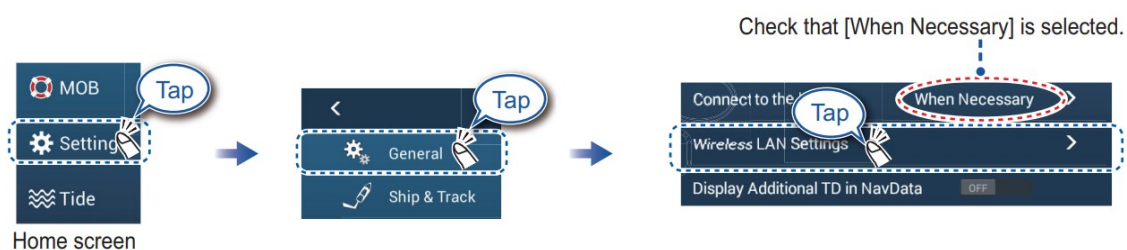
How to connect to an existing LAN

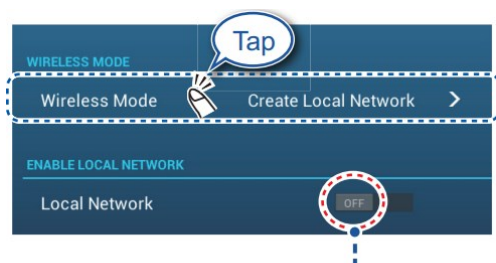
Connect to the existing LAN to download weather data or update the software. For smartphone and tablet settings, refer to appropriate manuals.



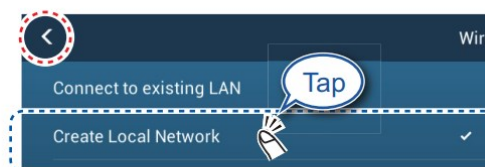
How to create a local wireless network

Create a local wireless network to connect to an iPhone, iPod, iPad, or Android device.

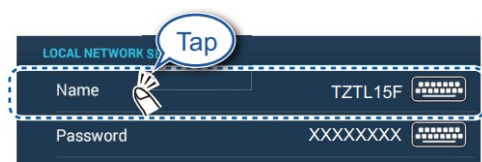




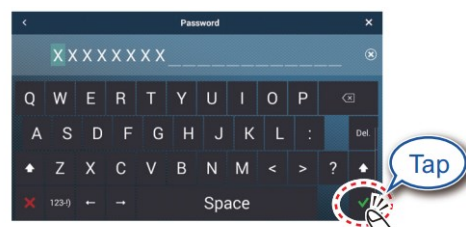
Check that [OFF] is selected.



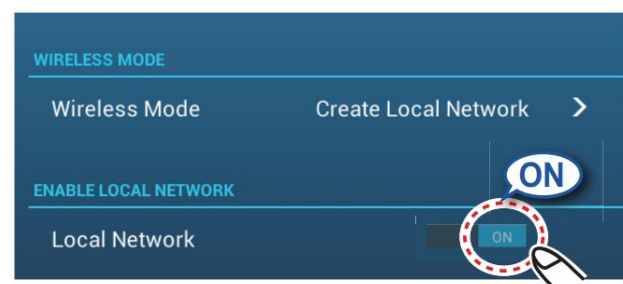
Select [Create Local Network], then tap "<".



Enter the name of the network, then tap [✓].



Enter the password, then tap [✓].



Connect to the NAVnetTZtouch2 from the smartphone or tablet.

Documents / Resources



[FURUNO TZTL12F Multi Function Display](#) [pdf] User Manual
TZTL12F Multi Function Display, TZTL12F, Multi Function Display, Function Display

References

- [FURUNO](#)