



FURUNO TZT10X Multi Function Display Touch Screen Instruction Manual

[Home](#) » [FURUNO](#) » FURUNO TZT10X Multi Function Display Touch Screen Instruction Manual 

FURUNO



MULTI FUNCTION DISPLAY Model TZT10X/13X/16X/22X/124XIBBX Operator's Guide

This guide provides the basic operating procedures for this equipment. For detailed information, see the Operator's Manual, available on our homepage. Connection of sensors required.
iPhone, iPod and iPad are trademarks of Apple Inc. Android is a trademark of Google Inc. All brand and product names are trademarks, registered trademarks or service marks of their respective holders.
The layout of the screen illustrations in this guide may differ depending on your system configuration and settings.

Contents

- [1 Operational Overview](#)
- [2 Chart Plotter](#)
- [3 Fish Finder](#)
- [4 Radar](#)
- [5 AIS \(Automatic Identification System\)](#)
- [6 Instrument Display](#)
- [7 Wireless LAN Settings](#)
- [8 Documents / Resources](#)
 - [8.1 References](#)
- [9 Related Posts](#)

Operational Overview

Icon (home/displays), power switch operations



How to select a display

- Tap a display icon on the Home page (see illustration above).
- Tap a display icon on the Quick page.



Touchscreen operations



Tap

- Select an item on a menu.
- Tap the display or an object to show the corresponding Pop-up menu.



Pinch

- Zoom in, zoom out the chart plotter and weather displays.
- Change the range on the radar and fish finder displays.

Range buttons



Drag, swipe

- Move the chart.
- Scroll the menu.
- Show Slide-out menu, Layers menu.

Two finger (long) tap



Does the function assigned to [Two Finger (Long) Tap Function] in the [Settings] – [General] – [This Display] menu.

Two finger drag



Change the viewpoint position on the 3D display.

Menu operation

Pop-up menu



Tap screen (applicable point, object, etc.).

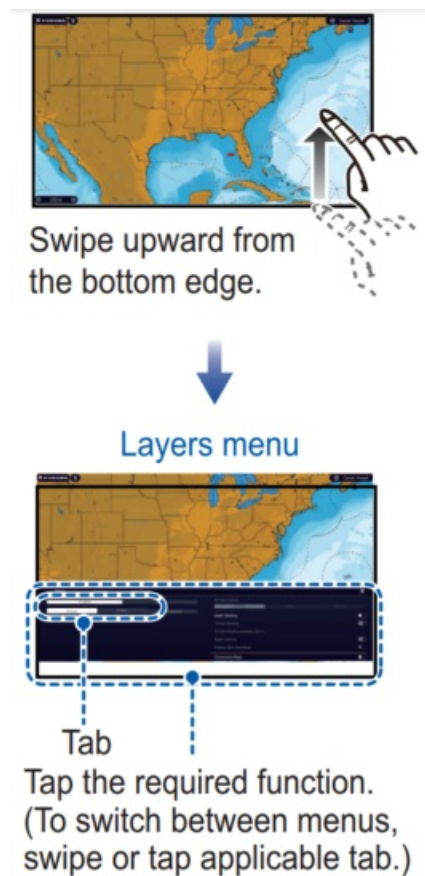


Tap the required function.
(">" indicates additional options.)

Slide-out menu



Layers menu



Settings menu

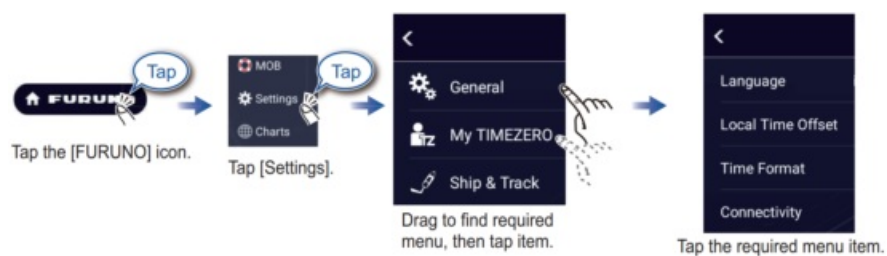
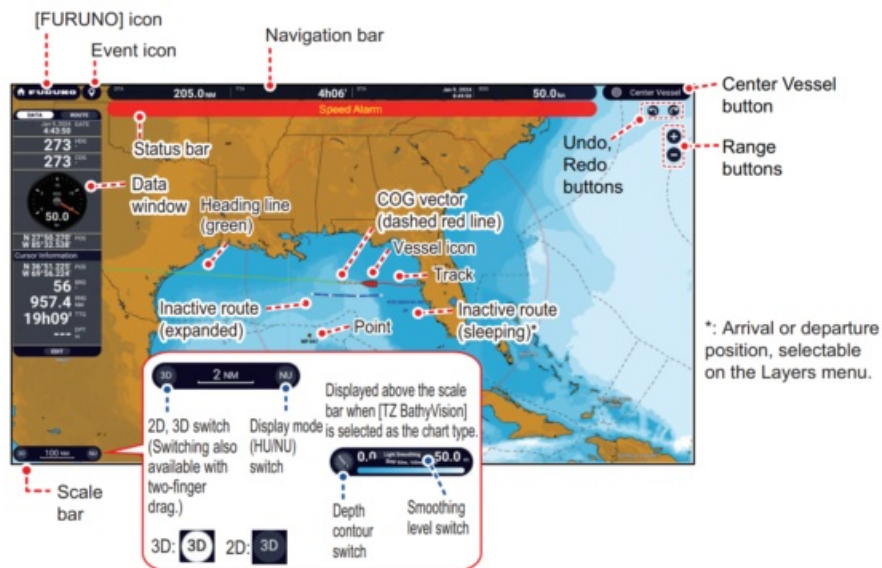


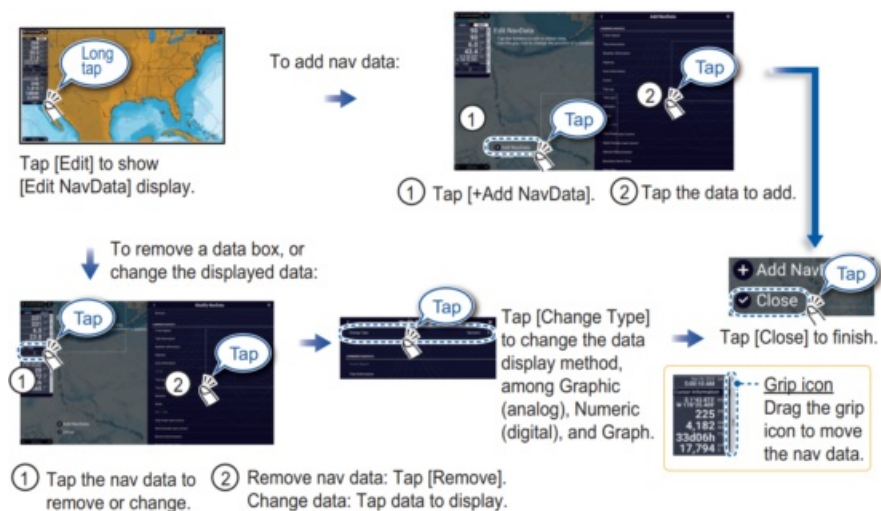
Chart Plotter



Data Window

Swipe from the left edge of the screen rightward to show the Data window, which shows nav data at the left edge of the screen. To hide the window, swipe the box leftward or tap the [NavData] indication (yellow) in the Slide-out menu.

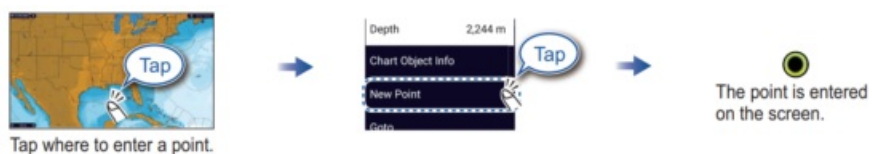
Data window settings



Points/Boundaries

Points can be entered on the chart plotter display (radar, fish finder and weather displays also) to mark important locations such as a good fishing spot. Point attributes (position, symbol type, color, etc.) are recorded to the Points list. Also, boundaries can be set at the position desired (net position, area to avoid, etc.).

How to enter a point



How to set a point as destination

On-screen point

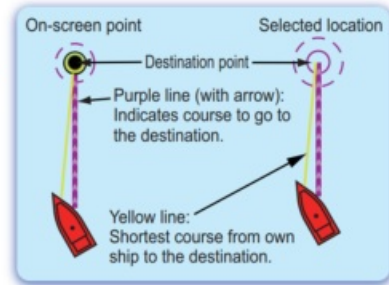
On-screen point



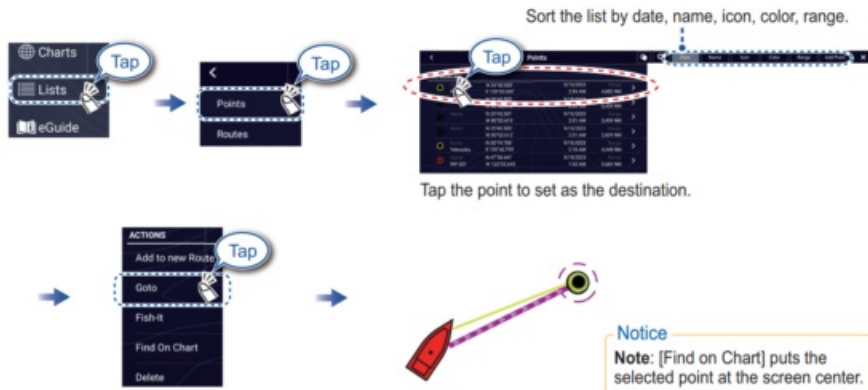
Tap a point or the location to set as destination.



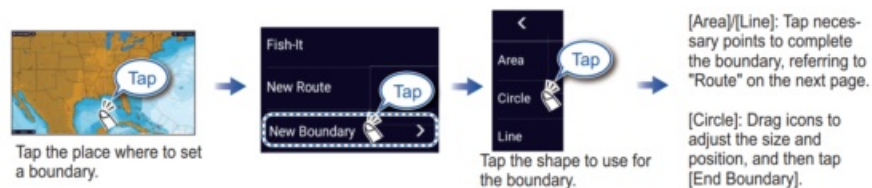
If a point was tapped.



Points list



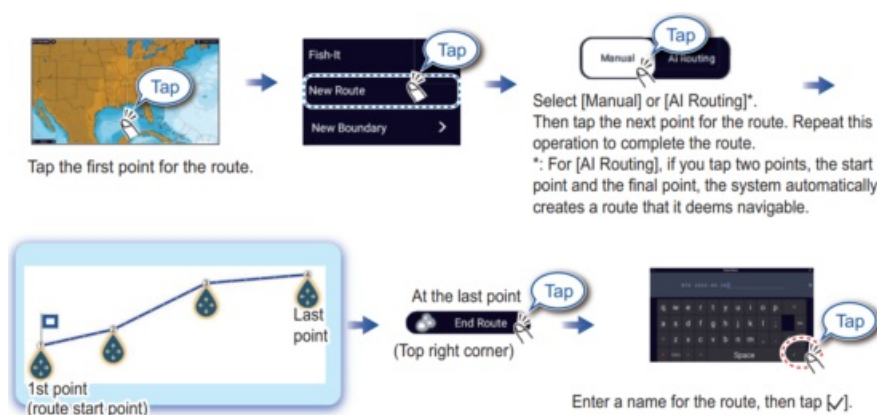
How to set a boundary



Routes

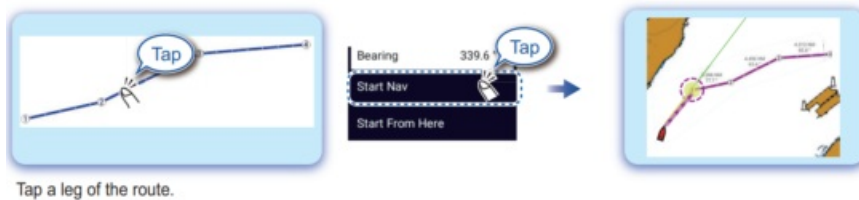
Route is comprised of a series of waypoints leading to a destination. Routes are saved to the Routes list.

How to create a new route

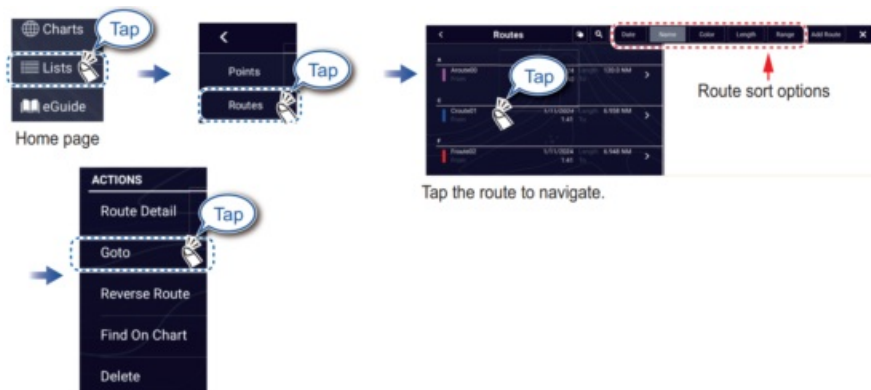


How to follow a route

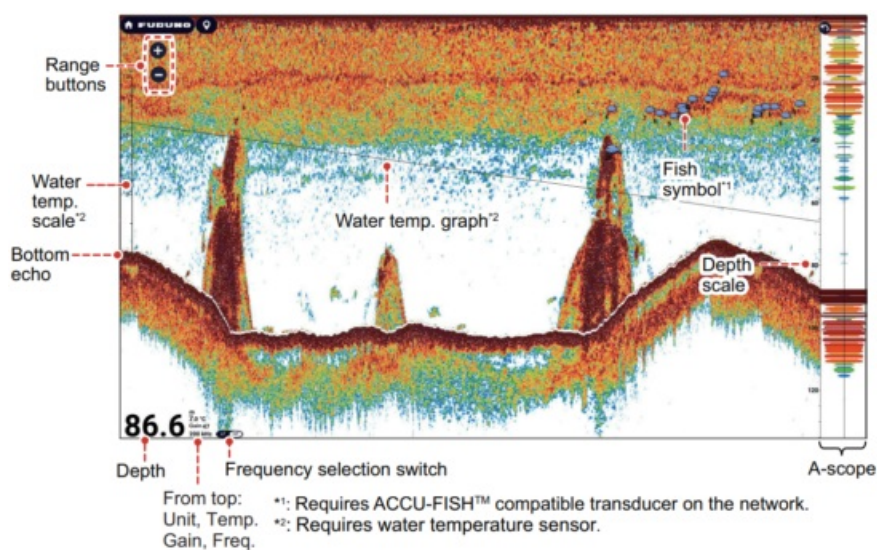
On-screen route



Routes list



Fish Finder

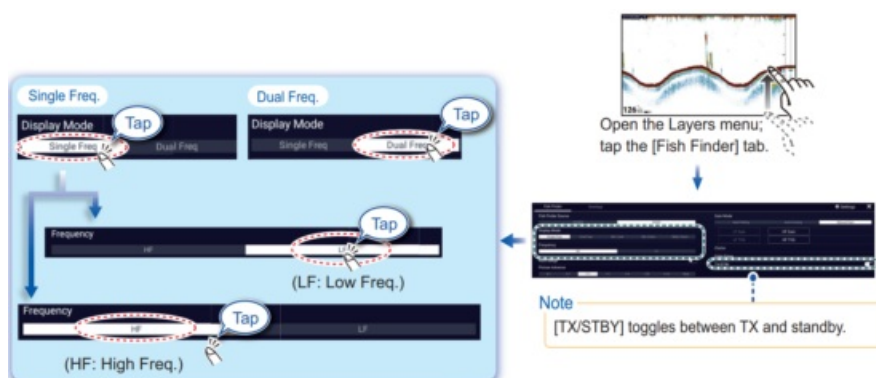


Note 1: Names of menu items may be different depending on the transducer connected on the network.

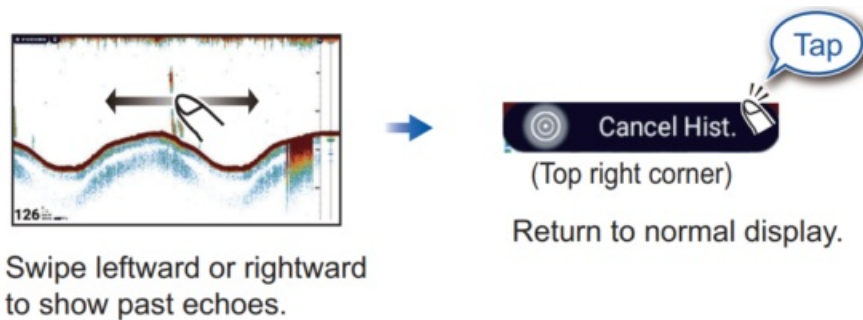
Note 2: TZX10X/13X/16X: Compatible with built-in or network fish finders.

TZX22X/24X/BBX: Compatible with network fish finders.

How to select a frequency



How to show past echoes (echo history)



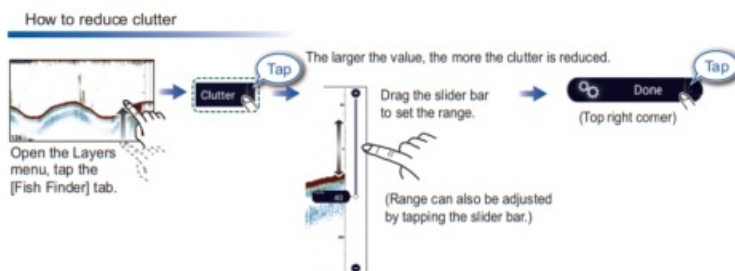
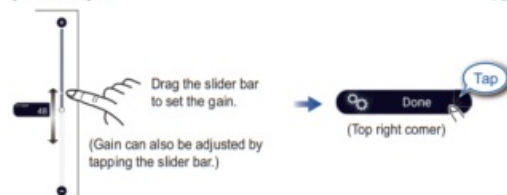
How to select the operating mode

The fish finder is available in automatic and manual operation. For automatic operation, gain, clutter and TVG are automatically adjusted.

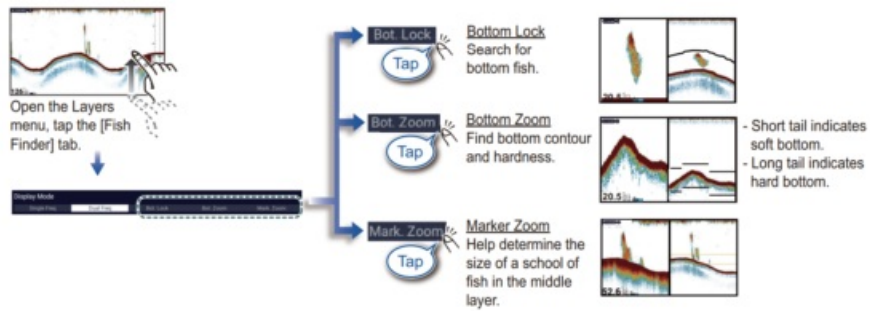


Manual mode

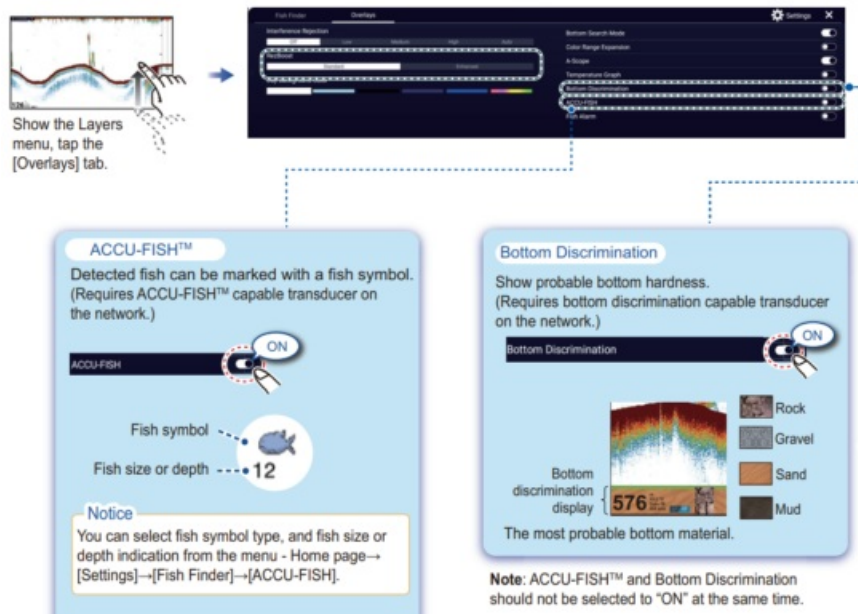
How to change the range



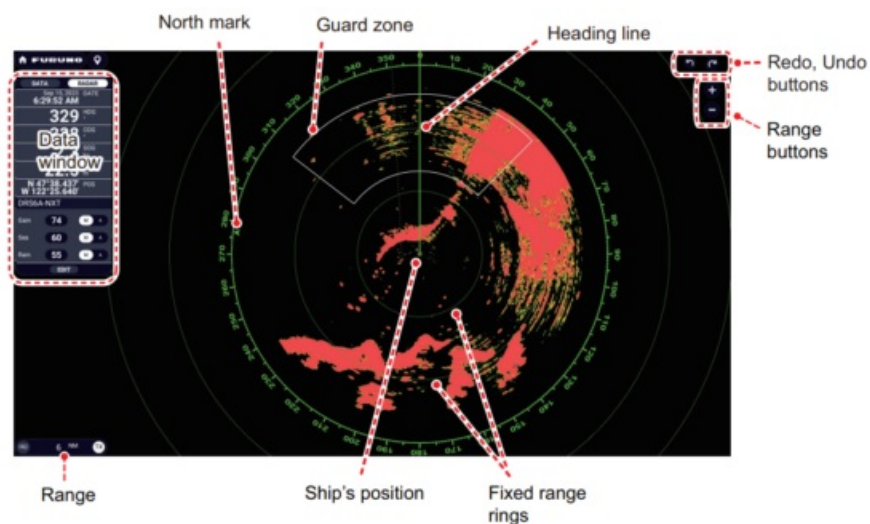
Zoom display



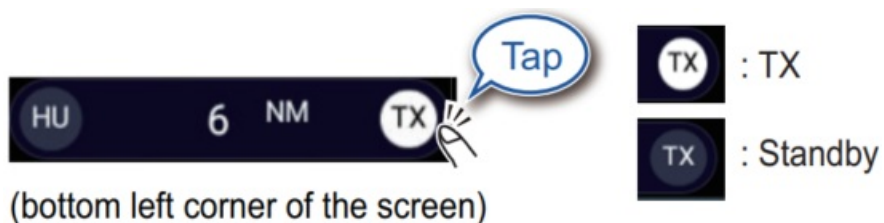
ACCU-FISH™/Bottom Discrimination



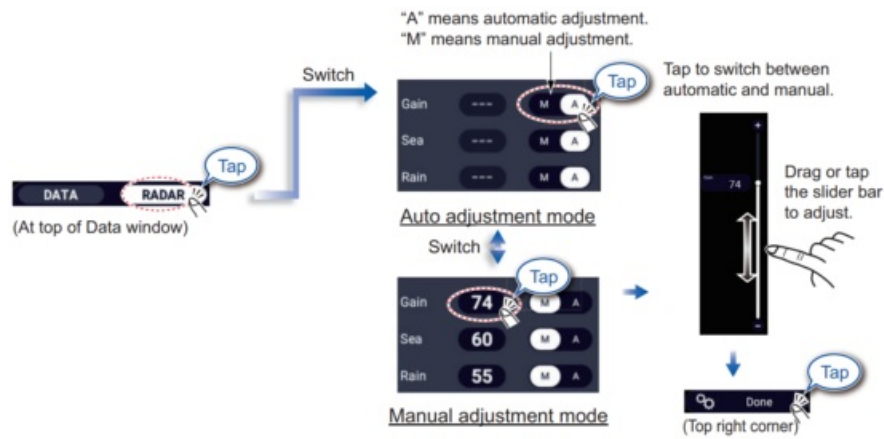
Radar



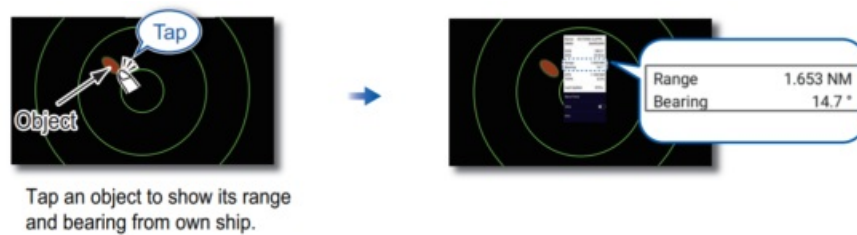
How to switch between standby and TX



How to adjust the gain / sea clutter / rain clutter

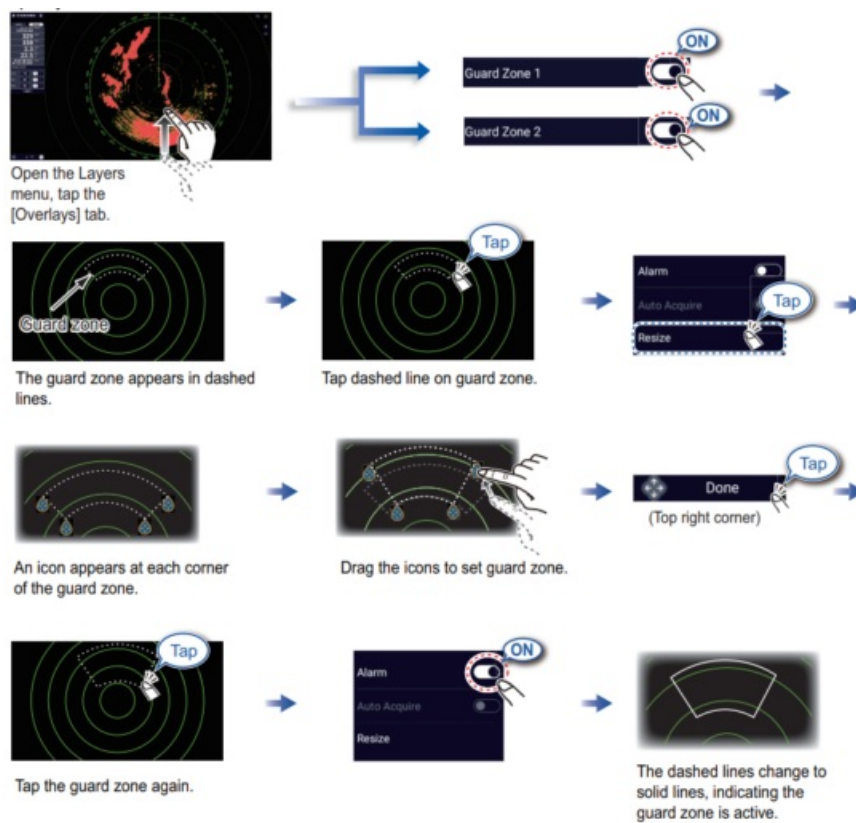


How to measure the range, bearing from own ship to an object



How to set a guard zone

A guard zone alerts you (with aural and visual alarms) when an object (ship, island, reef, etc.) enters the area you specify.



ARPA Operation

ARPA is an anti-collision aid that tracks the movement of other ships to help prevent collision. ARPA not only tracks other ships but also provides their navigation data. Targets can be acquired manually, automatically, or both

automatically and manually.

How to show, hide ARPA symbols



How to manually acquire a target



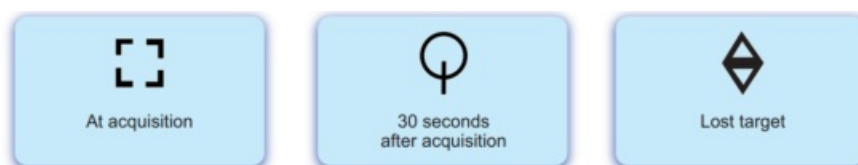
How to automatically acquire a target



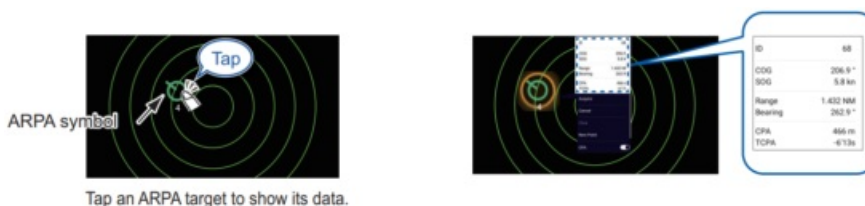
Note

When [Full Auto Tracking Sea Condition] is activated from the [Radar] tab in the Layers menu, targets within 3 NM from your ship are automatically acquired when connected to a DRS-NXT series radar.

ARPA symbols



How to display target data



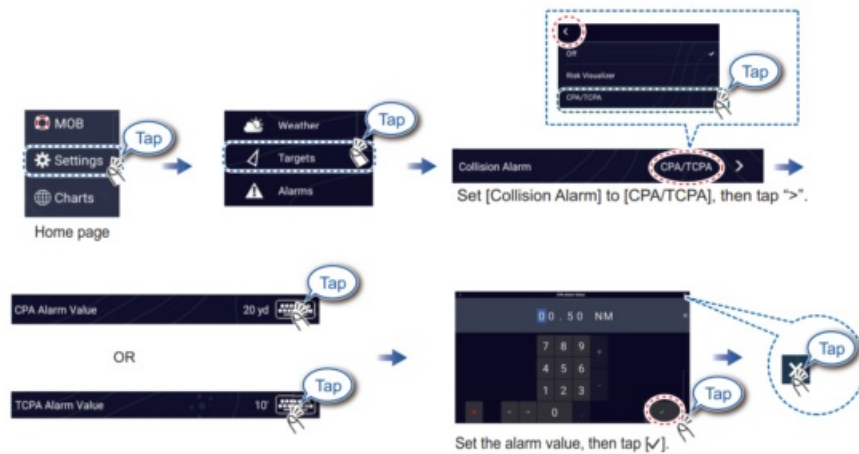
CPA/TCPA alarm

The CPA/TCPA alarm releases an aural alarm and a visual alarm (message in Status bar) when both the CPA and TCPA of a tracked target are equal to or lower than the CPA/TCPA alarm setting.

CPA: Closest point of approach

TCPA: Time to closest point of approach

How to set the CPA/TCPA alarm



How to acknowledge the CPA/TCPA alarm

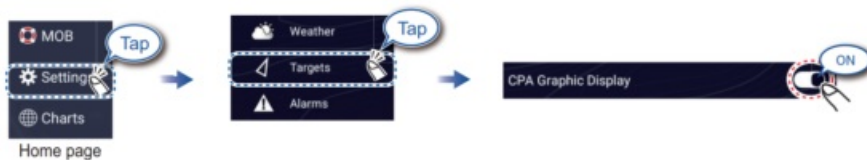
Tap the alarm message (top of screen) to acknowledge the alarm and stop the aural alarm.



CPA Line

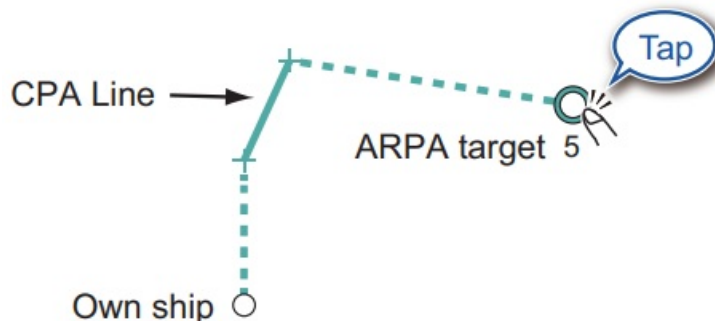
The CPA Line feature gives you a visual line that depicts the closest point of approach to a selected ARPA target. To use this feature, own ship position and heading data are required.

How to enable the CPA Line feature



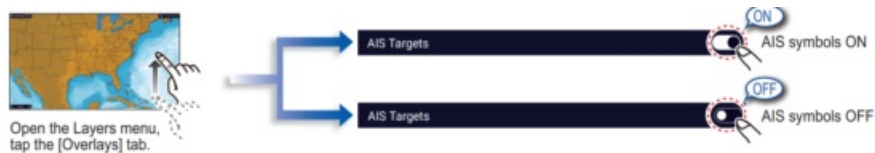
How to show the CPA Line

Tap an ARPA target (condition: target's CPA/TCPA must be a positive value) on the radar or chart plotter display.



AIS (Automatic Identification System)

How to show or hide AIS target symbols



AIS target symbols

	Class A AIS	Class B AIS	BFT* AIS
Activated target	SOG and COG vector Color: Blue	SOG and COG vector Color: Green	SOG and COG vector Color: Blue (filled)
Dangerous target	Color: Red		
Lost target	Color - AIS target: Blue - Cross: Red	Color - AIS target: Green - Cross: Red	Color - AIS target: Blue (filled) - Cross: Red

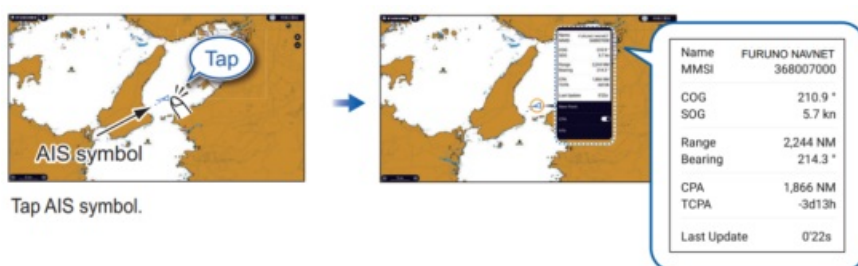
*: Blue Force Tracking

Proximity AIS target alarm

The proximity AIS target alarm releases aural and visual alarms when the distance between own ship and an AIS target is near the alarm value.



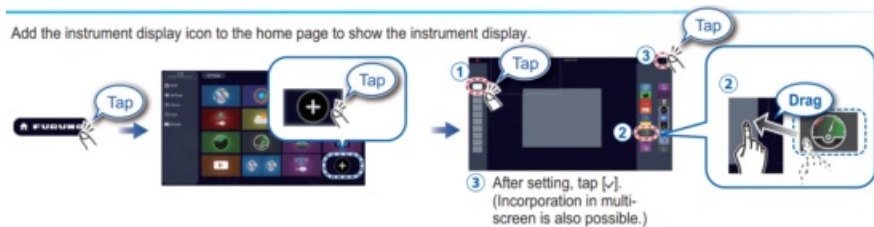
How to show AIS target data



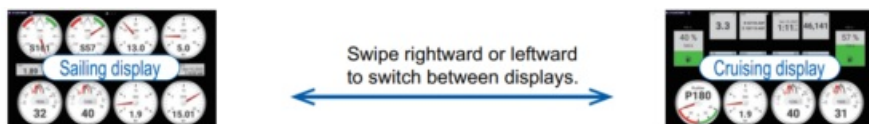
Instrument Display

With connection of appropriate sensors, the instrument display shows various navigation data.

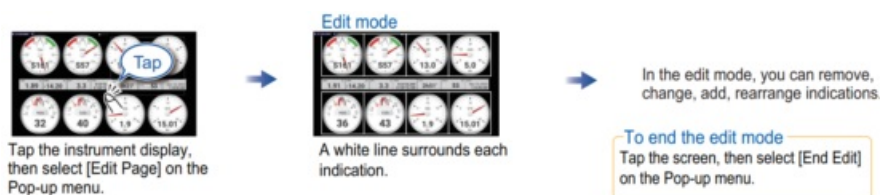
How to enable the instrument display



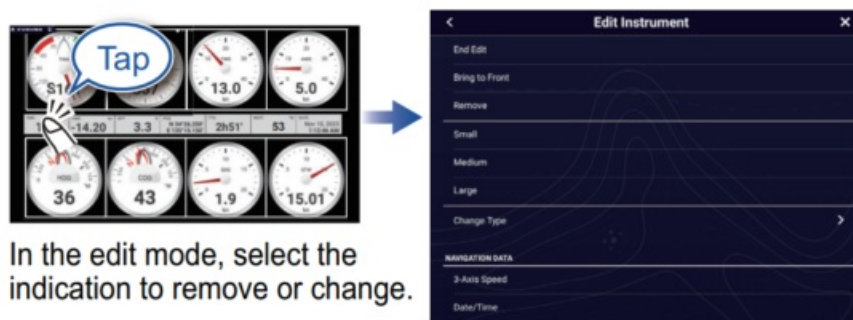
How to switch instrument displays (ex. full display)



How to edit the instrument display



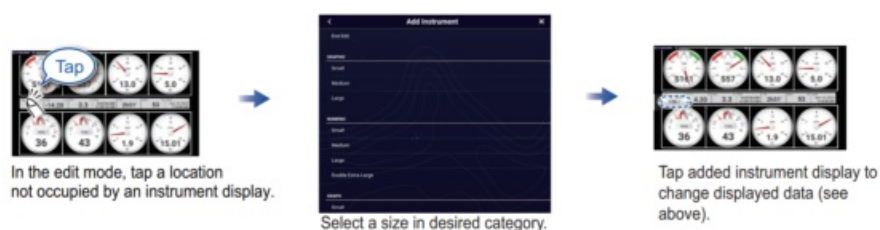
How to remove or change an indication



- Remove indication: Tap [Remove].
- Change size: Tap [Small], [Medium], [Large], [Double Extra Large]*.
- Change type: Tap [Change Type], then tap desired size.
- Change indication: Tap indication in [NAVIGATION DATA], [ROUTE INFORMATION], [WIND AND WEATHERY], and [ENGINE].

*: Numeric displays only

How to add an indication

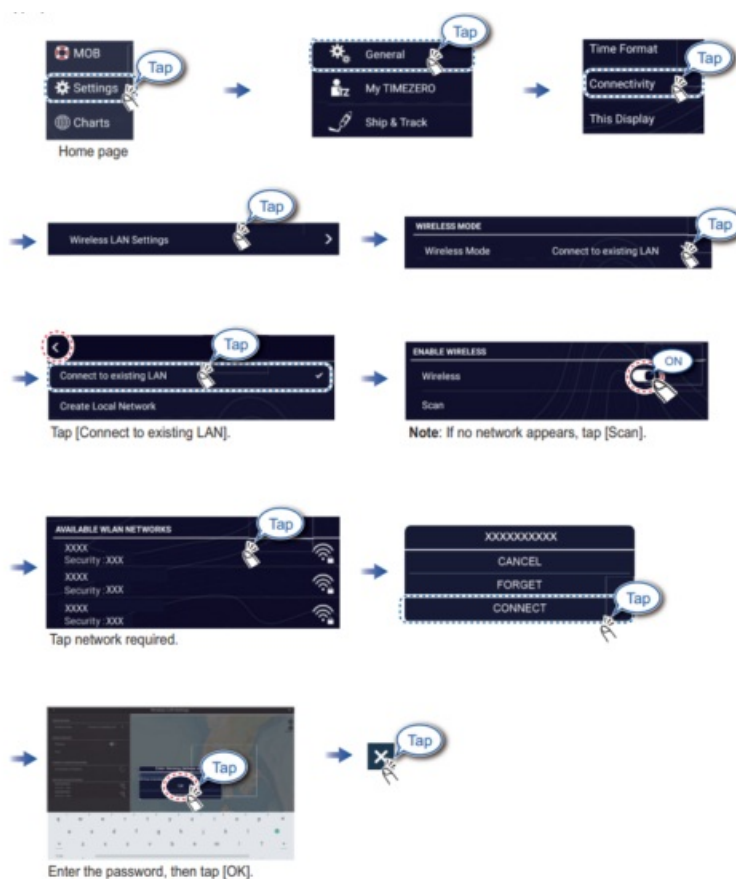


Wireless LAN Settings

You can connect to the internet with the wireless LAN signal to download weather information, update the software, and connect to an iPhone, iPod, iPad, or Android™ device, to operate and monitor a NavNet TZtouch XL device.

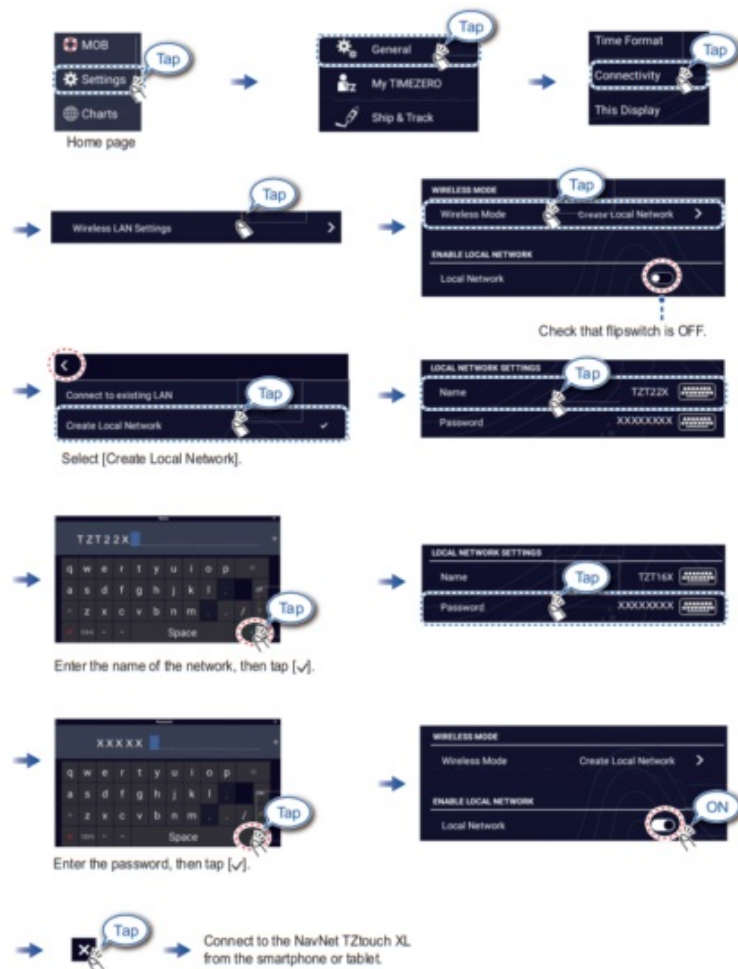
How to connect to an existing LAN

Connect to the existing LAN to download weather data or update the software. For smartphone and tablet settings, refer to appropriate manuals.



How to create a local wireless network

Create a local wireless network to enable operation, monitoring of the TZTtouch XL from a smartphone or tablet.



Publication No. SOCQA0045

PSTI Statement of Compliance

We FURUNO ELECTRIC CO., LTD.

(Name of manufacturer of the product)

9-52 Ashihara-Cho, Nishinomiya City, 662-8580, Hyogo, Japan

(Address of manufacturer of the product)

declare under our sole responsibility that the product

MULTI FUNCTION DISPLAY,

TZT10X, TZT13X, TZT16X, TZT22X, TZT.

(Product type, batch)

MAY / 31 / 2029

(Support period for the product).

https://www.furuno.co.jp/en/csr/sociality/customer/product_security.html

(Weblink for latest information and contact to report to the manufacturer security issues)

to which this declaration relates conforms to the following standard(s) or other normative document(s)

Product Security and Telecommunications Infrastructure Act 2022

Product Security and Telecommunications Infrastructure (Security Requirements for Relevant Connectable Products) Regulations 2023 Schedule 1

On behalf of Furuno Electric Co., Ltd.

Nishinomiya City, Japan

24 May 2024

(Place and date of issue)

Akihiko Kanechika
Department General Manager
Quality Assurance Department

A. Kanechika

(Signature, name and function of the signatory)

PSTI Statement of Compliance

We FURUNO ELECTRIC CO., LTD.

(Name of manufacturer of the product)

9-52 Ashihara-Cho, Nishinomiya City, 662-8580, Hyogo, Japan

(Address of manufacturer of the product)

declare under our sole responsibility that the product

MULTI FUNCTION DISPLAY,

TZT10X, TZT13X, TZT16X, TZT22X, TZT.

(Product type, batch)

MAY / 31 / 2029

(Support period for the product).

https://www.furuno.co.jp/en/csr/sociality/customer/product_security.html

(Weblink for latest information and contact to report to the manufacturer security issues)

to which this declaration relates conforms to the following standard(s) or other normative document(s)

Product Security and Telecommunications Infrastructure Act 2022

Product Security and Telecommunications Infrastructure (Security Requirements for

Relevant Connectable Products) Regulations 2023 Schedule 1

On behalf of Furuno Electric Co., Ltd.

Nishinomiya City, Japan

6 June 2024

(Place and date of issue)

Akihiko Kanechika
Department General Manager
Quality Assurance Department



(Signature, name and function of the signatory)



FURUNO ELECTRIC CO., LTD.



FURUNO ELECTRIC CO., LTD.
9-52 Ashihara-cho, Nishinomiya, 662-8580, Japan
Tel: +81(0)798 65-2111 Fax: +81 (0)798 63-1020

www.furuno.com

Pub. No. OSE-45240-D

(2406, DAMI) TZT10X/13X/16X/22X/24X/BBX

Printed in Japan



00020014513



[FURUNO TZT10X Multi Function Display Touch Screen](#) [pdf] Instruction Manual
TZT10X Multi Function Display Touch Screen, TZT10X, Multi Function Display Touch Screen, Function Display Touch Screen, Display Touch Screen, Touch Screen, Screen

References

- **[User Manual](#)**

Manuals+, Privacy Policy

This website is an independent publication and is neither affiliated with nor endorsed by any of the trademark owners. The "Bluetooth®" word mark and logos are registered trademarks owned by Bluetooth SIG, Inc. The "Wi-Fi®" word mark and logos are registered trademarks owned by the Wi-Fi Alliance. Any use of these marks on this website does not imply any affiliation with or endorsement.