



FURUNO TEU001 Remote Touch Encoder Installation Guide

[Home](#) » [FURUNO](#) » FURUNO TEU001 Remote Touch Encoder Installation Guide 

FURUNO TEU001 Remote Touch Encoder Installation Guide



Notes:

- The TEU utilizes a waterproof M12 style Connector. This is the same style of connector found on NMEA2000 devices. However, the TEU001 is a USB device, not a NMEA2000 device. The TEU is supplied with a 3 Meter M12 to male USB connection cable. An optional 5m cable is available, part #TEU-USB-05M.
- The TEU cannot be used to control more than one MFD. One TEU is needed per each MFD. Two TEU controllers are needed to control a TZT2BB.
- If a generic powered USB Hub is utilized, multiple MCU remotes and/or TEU controllers, as well as Thumb Drive memory can be installed on the same MFD. An example would be one TEU for an Arm-Chair Controller and one TEU or MCU remote mounted on the console next to the MFD. Extending the length of the provided cable for the TEU past 5meters requires utilizing a powered USB Hub or powered USB Extension cable.

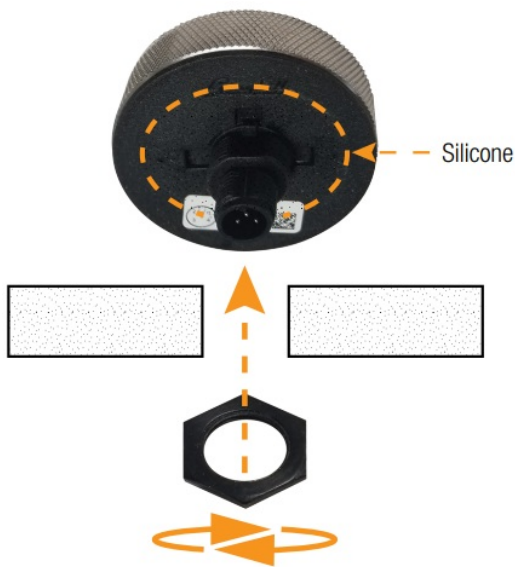
Contents

- [1 Mounting TEU W/O Plate/Custom Console Mount](#)
- [2 Using Stainless “Surface Mount” Plate](#)
- [3 Documents / Resources](#)
- [4 Related Posts](#)

Mounting TEU W/O Plate/Custom Console Mount

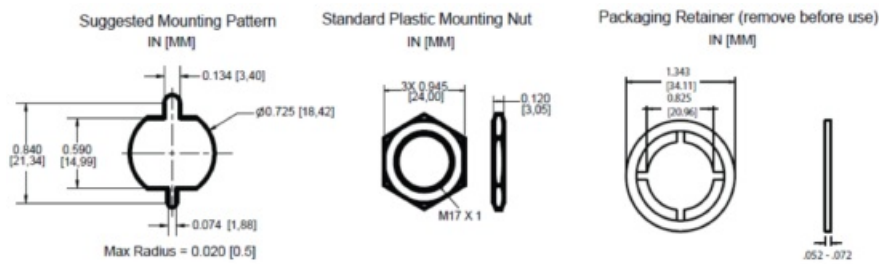
Use this option if you have a console or custom mounting arrangement for the TEU, where the surface is thin enough (Max width 1/8 inch, 3mm) to mount the TEU securely without the use of the surface mount bracket.

Installation Procedure



1. It is recommended to test TEU for normal function before installation.
2. Prepare mounting pattern to mount TEU to the mounting surface using the cutout information below or use the supplied plate as a template. Remember to orientate the larger notch at the top. This will ensure that the Two Finger Tap Button is at the bottom.
3. Remove white TEU Packaging Retainer (see diagram below)
4. Before mounting the TEU to the mounting surface, to ensure a waterproof installation, apply a thin coat of silicone sealant to the cutout of the mounting surface.
5. Place TEU into mounting surface and lightly hand tighten the plastic mounting nut of the TEU. Remember hand tighten only! (14inch pounds) Take care not to cross thread the TEU mounting nut. Apply a small amount of silicone sealant to the nut to prevent it from backing off.

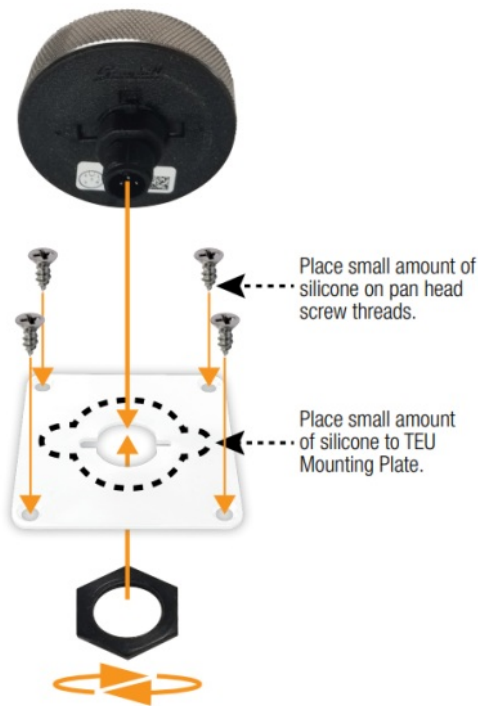
DO NOT USE LOCKTITE!



Using Stainless “Surface Mount” Plate

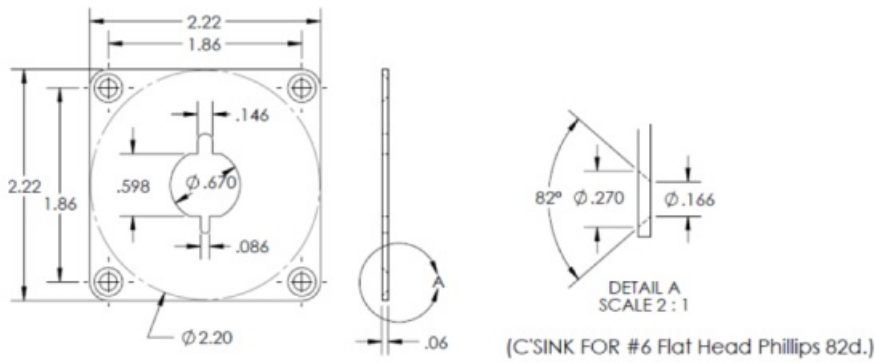
Use this style of mount for surfaces thicker than 3mm or 1/8 inch. Plates are available in White (TEU-001- PLW), Black (TEU-001-PLB), and Stainless Steel (TEU-001-PLS).

Installation Procedure



1. It is recommended to test TEU for normal function before installation.
 2. Using a hole saw, drill a 1.5" hole in a flat area of the console or mounting surface.
 3. Before mounting the TEU to the bracket, apply a thin coat of silicone sealant to the top of the plate around the cutout to ensure a waterproof installation.
 4. Attach the TEU to the bracket and lightly hand tighten the plastic mounting nut of the TEU. Remember hand tighten only! Take care not to cross thread the TEU mounting nut. Apply a small amount of silicone around the nut to prevent it from backing off.
- DO NOT USE LOCKTITE!**
5. Apply a thin coat of silicone sealant to the underside of the plate where it contacts the console to ensure a waterproof installation.

Use the provided stainless screws for wood or FRP/ Gelcoat Console installations or supply your own stainless fasteners for other console types.



Documents / Resources

	FURUNO TEU001 Remote Touch Encoder [pdf] Installation Guide TEU001, Remote Touch Encoder
	FURUNO TEU001 Remote Touch Encoder [pdf] User Guide TEU001 Remote Touch Encoder, TEU001, Remote Touch Encoder