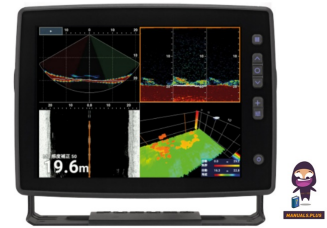



**FURUNO**  
**SFD-1010/1012 10**  
**12 Flex Function**  
**Display**



# FURUNO SFD-1010/1012 10 12 Flex Function Display User Guide

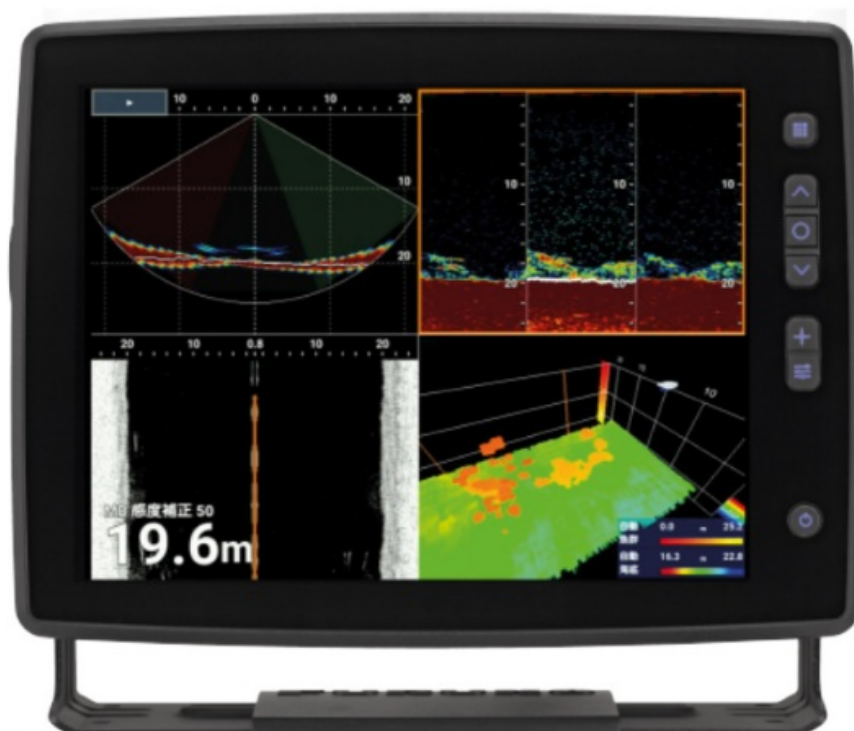
[Home](#) » [FURUNO](#) » FURUNO SFD-1010/1012 10 12 Flex Function Display User Guide 

## Contents

- [1 FURUNO SFD-1010/1012 10 12 Flex Function Display](#)
- [2 Specifications](#)
- [3 Product Usage Instructions](#)
- [4 FAQ](#)
- [5 Touch screen and key operation](#)
- [6 When Radar Sensor is selected](#)
- [7 PSTI Stat,ement of Compliance](#)
- [8 Documents / Resources](#)
  - [8.1 References](#)

# FURUNO

**FURUNO SFD-1010/1012 10 12 Flex Function Display**



## Specifications

- **Model:** SFD-1010/1012
- **Display:** Flex Function Display
- **Touch Screen:** Yes
- **Key Operation:** Yes
- **Sensors:** Radar Sensor, Fish Finder Sensor, Multi Beam Sonar
- **Maximum Fixed Marks:** 20

## Product Usage Instructions

### Setup Operations:

When turned on for the first time, follow these steps:

1. Language Selection: Tap English, then OK.
2. Display Selection: Choose LANDSCAPE or PORTRAIT.
3. Sensor Selection: Select a RADAR SENSOR, FISH FINDER SENSOR, or MULTI BEAM SONAR.

### Menu Operation (Radar Sensor)

- Tap the icon on the top-left to show InstantAccess bar™.
- Short press to access the BRILLIANCE menu.
- Adjust settings by dragging the menu window or using arrow keys.

### Other Key Operations

- Change Range: Zoom in/out using the corresponding buttons.
- TX/STBY Button: Toggle between transmit and standby mode.

- Fixed Mark: Record and display cursor longitude and latitude. Use [ ] key to delete marks.

## FAQ

### **Q: How do I lock the touch operation?**

A: Long press to activate Touch Lock feature.

### **Q: How can I turn off the unit?**

A: Long press the Power Off button or keep pressing the power key for over three seconds.

### **Q: What is the maximum number of fixed marks that can be displayed?**

A: A maximum of 20 fixed marks can be displayed. The oldest mark is automatically deleted when the limit is reached.

This guide provides the basic operating procedures for this equipment. For detailed information, see the Operator's Manual which can be downloaded from the Quick Response Code on the right side. The brand and product names mentioned in this guide are trademarks, registered trademarks or service marks of their respective holders. The screenshots shown in this Operator's Guide are taken in the landscape format. The display layout is different in the portrait format. Key operation is available in the portrait format.



## Touch screen and key operation

### Tap



- Select menu item.
- Move the cursor to tapped location.
- Tap the button shown on the screen and set.

### Drag/Swipe



- Move the cursor.
- Scroll the menu.
- Select a range.
- Adjust the setting with the slider bar.

## Key Operation



- Setup operations (When turned on for the first time.)

① Language selection menu appears.



- Tap English.

- Tap OK.

② Display selection menu appears.



- Tap LANDSCAPE or PORTRAIT.


③ Sensor selection menu appears.



- Tap the sensor to use (RADAR SENSOR / FISH FINDER SENSOR / MULTI BEAM SONAR).

## When Radar Sensor is selected

## Menu Operation

Tap  icon (shown on the top-left of the screen) to show the InstantAccess bar™.

InstantAccess bar™

The contents of the BRILLIANCE menu are common to Radar sensor, Fish Finder sensor and Multi Beam Sonar. (The order of menu items changes according to the selected sensor.)

Short press  
BRILLIANCE menu appears.

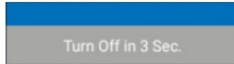


Menu Item	Details
Brilliance	Adjust the display brilliance.
Palette	Change the background color.
Key Brill.	Adjust the key brilliance.
Touch Lock	Lock the touch operation.
Power Off	Turn off the unit.
Sensor Switching	Move to sensor selection mode (③ on page 1).

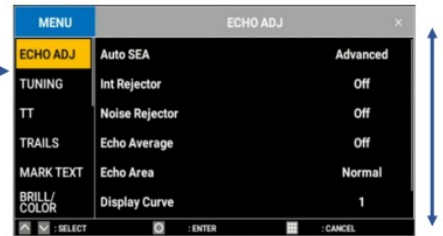
Turning Off the power

Long press

Power off pop-up appears after pressing the power key for over three seconds.




Keep pressing the power key for more three seconds after the pop-up window appears to turn off the power.

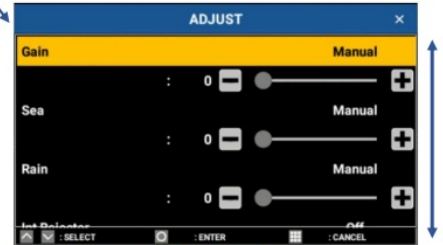


Setting menu appears.

Close the menu by pressing again.

Drag the menu window up or down to scroll and tap the menu to set. (Or use the arrow keys to select the menu and press  key to set.)

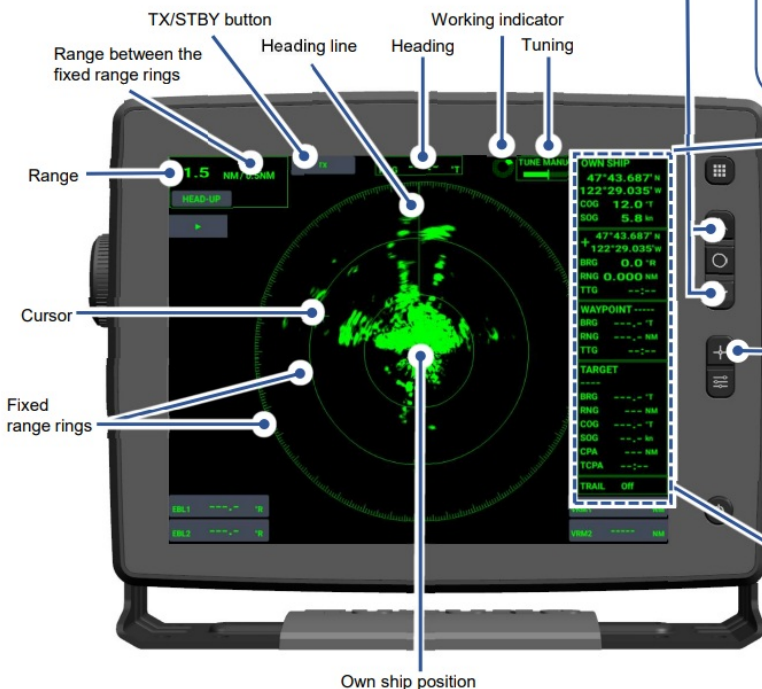
Short press



ADJUST (Echo Adjust) menu appears.

Menu Item	Details
Gain	Adjust the radar gain.
Sea	Suppress the echo reflected from sea.
Rain	Suppress the echo reflected from rain or snow.
Int. Rejector	Reject interference.
Noise Rejector	Reduce the echo noise.

## • Other key operations, function box and display




TLL Output and point

Functions will differ according to the menu settings.

TLL Output	Output the current latitude and longitude position of the selected target to external equipment.
Fixed Mark	Record and display the current cursor longitude and latitude.

A maximum of 20 fixed marks can be displayed. When the maximum amount is exceeded, the oldest mark is automatically deleted.

To delete a fixed mark just after entering it, press the  key.

Function Box

OWN SHIP information

- Own ship L/L position, course, speed.

+

- L/L position of cursor
- Bearing, range, and time-to-go (TTG) to the cursor.

WAYPOINT

- Bearing to the waypoint.
- Range and time-to-go (TTG) to the waypoint.

TARGET

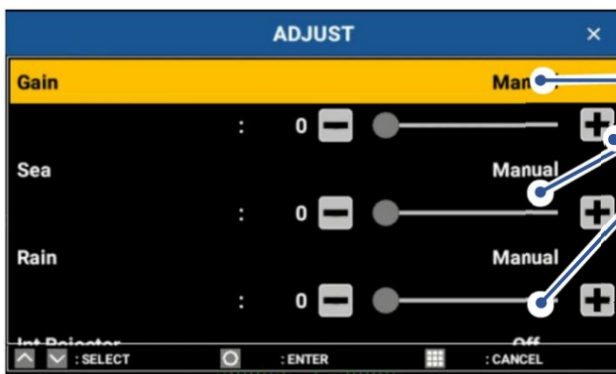
- Bearing, speed, course to the selected target.
- Range to the selected target.
- CPA (Closest Point of Approach) to the selected target.
- TCPA (Time to the Closest Point of Approach)

TRAIL

- Setting of trail (On/Off)
- Trail can be set from the InstantAccess bar™.

## • Adjustment of Gain, Sea and Rain





When [Manual] is selected: Use the slider bar below selected item for adjustment.  
When [Auto] is selected: Adjustment is not available; the slider bar is grayed out.

The slider bar can be moved with the following two methods, in addition to tapping it.

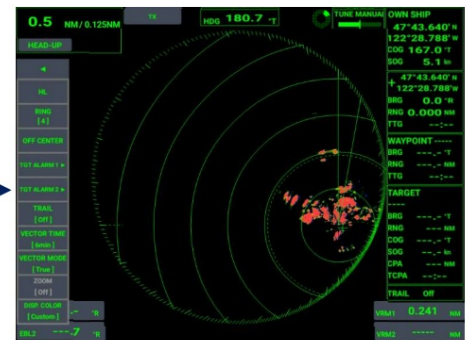
- Tap the [-]/[+] button on both sides of the slider bar.
- Press the [▲] key or [▼] key.

## Off-center

Move the cursor to the expected center of display.



Tap [OFF CENTER] of InstantAccess bar™.



## When Fish Finder Sensor is selected

When Fish Finder Sensor is selected

**Gain Settings**  
G: 0.0~10 (Manual Mode)  
G: AF (Auto Mode: Fishing)  
G: AC (Auto Mode: Cruising)

**Range**  
AUTO: (Auto Mode)  
MANUAL: (Manual Mode)

**Mode**

**Picture Advance Speed**

**Output Power**

**Interference Rejection**

**Alarm Icon**

Fish Alarm :

Temperature Alarm :

Depth Alarm :

Speed Alarm :

**Menu**

MENU	SOUNDER	X
SOUNDER	Pic. Advance	Stop
DISPLAY	Shift	-1 m
ALARM	Interference	Off
DATA	Color Erase	0 %
IA BAR	Clutter	-1 %
SYSTEM	White Marker	
	TVG HF	-1
	TVG LF	-1
	Smoothing	Off / On
	Bottom Area	-1 %
	Heaving Corr.	Off / On
	TX Rate Mode	Manual
	TX Rate	-1
	Transmit	Off / On

**InstantAccess bar™**

Pic. Advance [Stop]  
Shift [-1m]  
Interference [Off]  
Color Erase [0%]  
Clutter [-1%]  
A-Scope [Off]  
ACCU-FISH [Off]  
Bottom Disc. [Off]  
Preset 1  
Preset 2  
Preset 3

**Popup**

Range Auto  
Mode  
Gain Auto  
Offset HF  
Offset LF  
Gain HF  
Gain LF

**Brilliance Menu**

Short Press

Brilliance		X
Touch Lock	Off / On	
Palette	White	
Brilliance	16	
Key Brill.	8	
Power Off		
Sensor Switching		

Move to sensor selection mode (③ on page 1).

The contents of the Brilliance menu are common to Radar sensor, Fish Finder sensor and Multi-Beam Sonar. (The order of menu items changes according to the selected sensor.)

### How to display fish size

[Menu] → [DISPLAY] → [ACCU-FISH] → [ACCU-FISH] → [On]

Fish Symbol (Selectable from four types)  
※ The symbol size changes with fish size.

Fish Size/Depth  
(Selectable with [Fish Info].)  
※ Size of number can be changed with [Info Size].

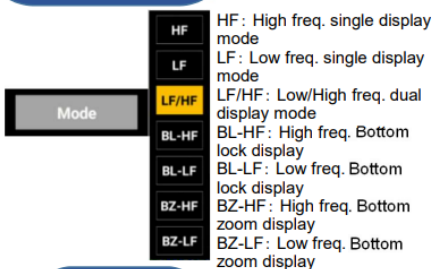
	Striped	Solid	Circle	Square
Large fish size (more than 50 cm, or more than 20 inches)				
Small fish size (10 to 49 cm, or 4 to 19 inches)				

### Pop up menu

#### Change range mode



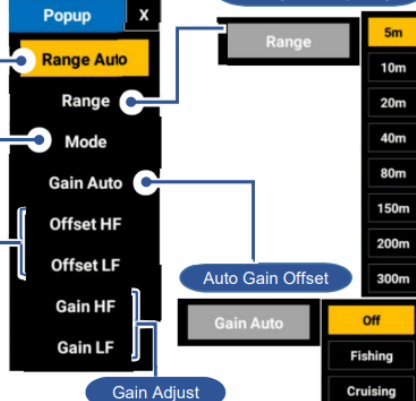
#### Change display mode



#### Gain Offset



#### Change display range



#### Gain Adjust



### Bottom Discrimination

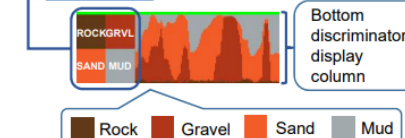
[Menu] → [DISPLAY] → [Bottom Disc.] → [Type View] → [Graphic] or [Probability]

#### Graphic



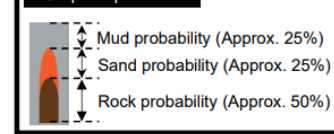
Example of [Bottom Disc.] menu setting  
• Bottom Disc: Graphic  
• Legend: On  
Displays the most probable bottom sediment.

#### Probability



Example of [Bottom Disc.] menu setting  
• Bottom Disc: Probability  
• Legend: On  
Displays bottom data in graph form.

#### Graph Explanation

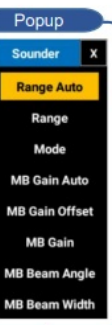
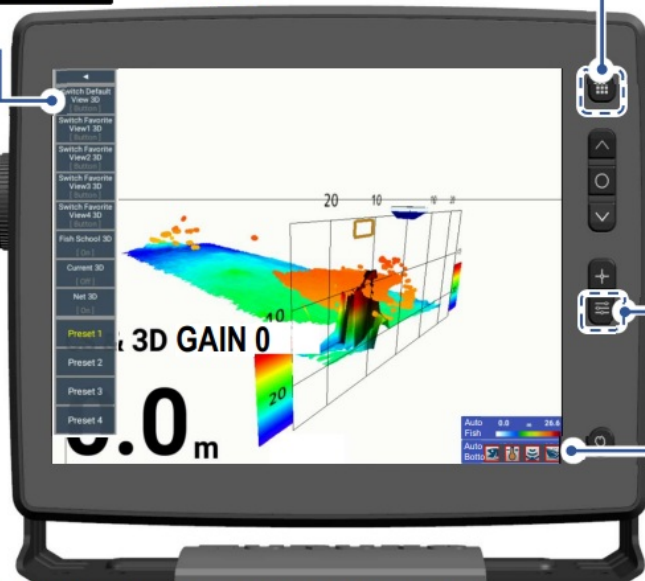
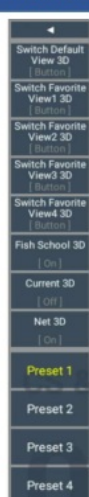


### When DFF-3D is selected

When DFF-3D is selected

3D History Mode

#### InstantAccess bar™



Alarm Icons appear here.

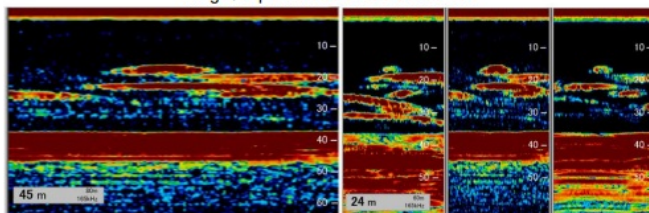
#### Pinch Operation

Zoom in and out with pinch operation are available in the 3D History and Cross Section modes.



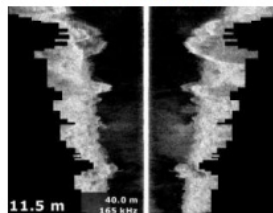
In addition to the 3D History display shown above, the modes described below are available. You can select these modes from the Popup menu.

#### Single/Triple Beam Fish Finder Mode



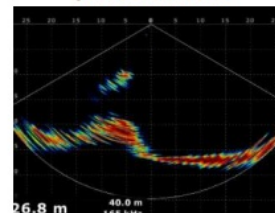
In the triple beam fish finder mode, the beams in three directions (port, downward, and starboard) are displayed simultaneously.

#### Side Scan Mode



A wide-angle beam displays a wide section of terrain.

#### Cross Section Mode



Displays an underwater cross-sectional image from port to starboard.

Screen 1~7 (Popup menu, Factory default)

Sounder

X

Range Auto

Range

Mode

MB Gain Auto

MB Gain Offset

MB Gain

MB Beam Angle

MB Beam Width

Screen1

Screen2

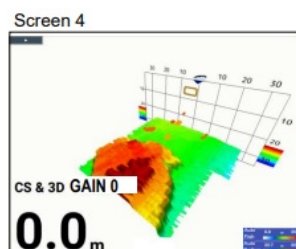
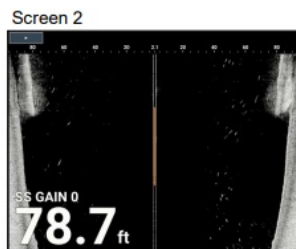
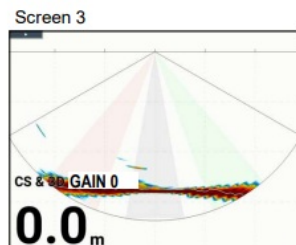
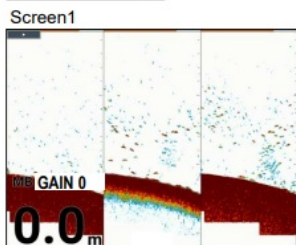
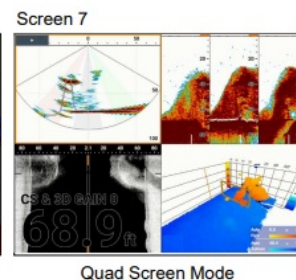
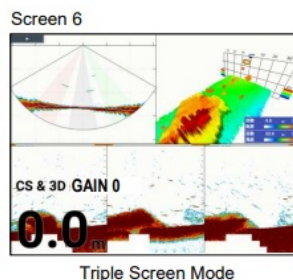
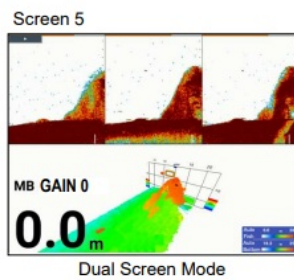
Screen3

Screen4

Screen5

Screen6

Screen7



MENU

DISPLAY

X

COMMON

SOUNDER

SIDE SCAN

SONAR

3D HIST.

DISPLAY

ALARM

DATA

IA BAR

SYSTEM

Depth Size : [ Medium ]

Gain Size : [ Medium ]

Palette : [ White ]

Header Scale : [ Time ]

Scale Size : [ 5 ]

Screen Setup

Screen 1

Screen 2

Screen 3

Screen 4

Screen 5

Screen 6

Screen 7

SELECT

ENTER

CANCEL

Screen 1 Setup

X

Split Screen : [ Full Screen ]

Mode 1 : [ Multi Beam ]

Mode 2 : [ Side Scan ]

Mode 3 : [ Sonar ]

Mode 4 : [ 3D-History ]


1

The contents of Screen 1 to 7 are customizable on the Screen Setup menu.

OSE-45170-A

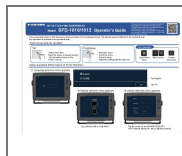


## PSTI Stat,ement of Compliance

<h1 style="margin: 0;">PSTI Statement of Compliance</h1>	
We	FURUNO ELECTRIC CO., LTD.
	(Name of manufacturer of the product)
	9-52 Ashihara-Cho, Nishinomiya City, 662-8580, Hyogo, Japan
	(Address of manufacturer of the product)
declare under our sole responsibility that the product	
	SINGLE FUNCTION DISPLAY, SFD-1010, SFD-1012
	(Product type, batch)
	August / 31 / 2029
	(Support period for the product)
	<a href="https://www.furuno.co.jp/en/csr/sociality/customer/product_security.html">https://www.furuno.co.jp/en/csr/sociality/customer/product_security.html</a>
	(Weblink for latest information and contact to report to the manufacturer security issues)
to which this declaration relates conforms to the following standard(s) or other normative document(s)	
Product Security and Telecommunications Infrastructure Act 2022	
Product Security and Telecommunications Infrastructure (Security Requirements for Relevant Connectable Products) Regulations 2023 Schedule 1	
On behalf of Furuno Electric Co., Ltd.	
Nishinomiya City, Japan 24 April 2024	<div style="display: flex; justify-content: space-between; align-items: flex-end;"> <div style="width: 60%;">                     Akihiko Kanechika                      Department General Manager                      Quality Assurance Department                 </div> <div style="width: 35%; text-align: center;">  </div> </div>
(Place and date of issue)	(Signature, name and function of the signatory)

- [www.furuno.com](http://www.furuno.com)

## Documents / Resources



[FURUNO SFD-1010/1012 10 12 Flex Function Display](#) [pdf] User Guide  
SFD-1010 1012 10 12 Flex Function Display, SFD-1010 1012 10 12, Flex Function Display, Function Display, Display

## References

- [User Manual](#)

Manuals+, Privacy Policy

This website is an independent publication and is neither affiliated with nor endorsed by any of the trademark owners. The "Bluetooth®" word mark and logos are registered trademarks owned by Bluetooth SIG, Inc. The "Wi-Fi®" word mark and logos are registered trademarks owned by the Wi-Fi Alliance. Any use of these marks on this website does not imply any affiliation with or endorsement.