


# FURUNO SFD-1010-1012 10-12 Inch Flex Function Display Installation Guide

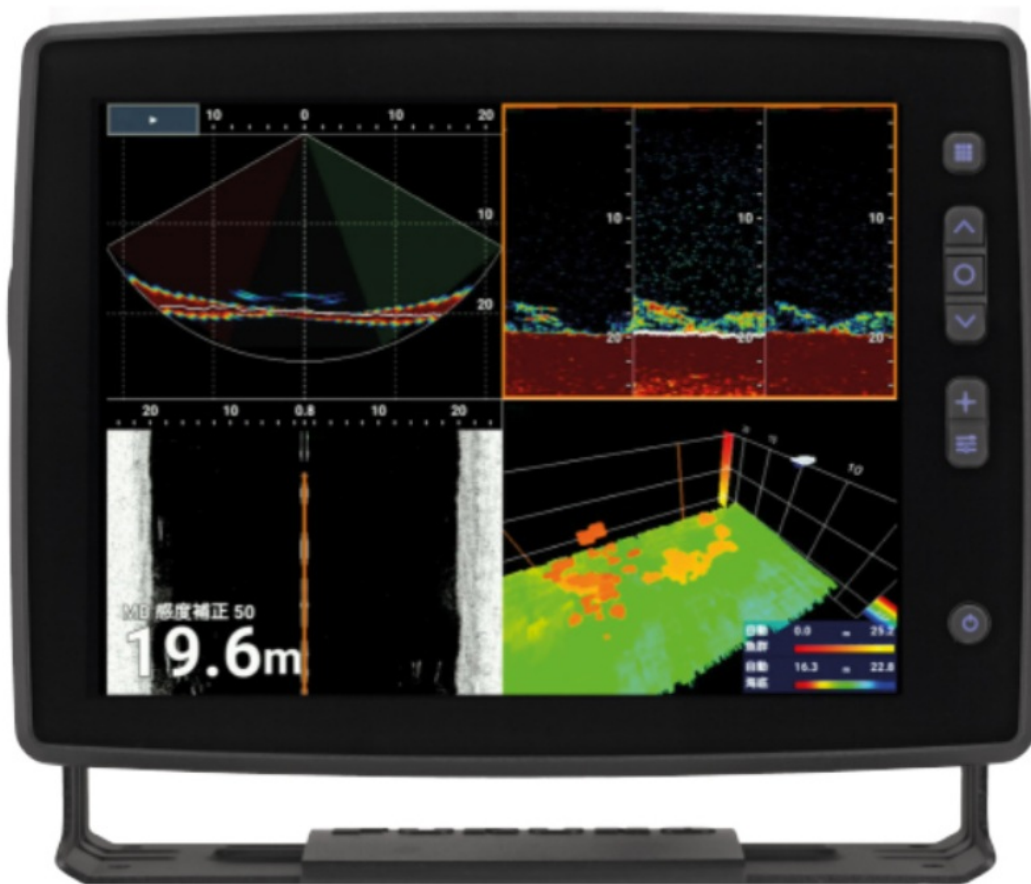
[Home](#) » [FURUNO](#) » FURUNO SFD-1010-1012 10-12 Inch Flex Function Display Installation Guide 

## Contents

- 1 FURUNO SFD-1010-1012 10-12 Inch Flex Function Display
- 2 Operator's Guide
  - 2.1 Setup operations (When turned on for the first time.)
- 3 Menu Operation
  - 3.1 Other key operations, function box and display
- 4 Adjustment of Gain, Sea and Rain
- 5 Off-center
- 6 When Fish Finder Sensor is selected
  - 6.1 How to display fish size
- 7 Pop up menu
- 8 Bottom Discrimination
- 9 When DFF-3D is selected
- 10 Screen 1 7 Popup menu, Factory default)
- 11 Documents / Resources
- 12 Related Posts



**FURUNO SFD-1010-1012 10-12 Inch Flex Function Display**



## Operator's Guide

The screenshots shown in this Operator's Guide are taken in the landscape format. The display layout is different in the portrait format. Key operation is available in the portrait format.

Touch screen and key operation

### Tap

- Select menu item.
- Move the cursor to tapped location.
- Tap the button shown on the screen and set.



### Drag/Swipe

- Move the cursor.
- Scroll the menu.
- Select a range.
- Adjust the setting with the slider bar.



## Key Operation



Open/Close  
menu.



Move cursor.



Confirm  
menu item.

## Setup operations (When turned on for the first time.)

1. Language selection menu appears.



- Tap English.

- Tap OK.

2. Display selection menu appears.




- Tap LANDSCAPE or PORTRAIT.

3. Sensor selection menu appears.



- Tap the sensor to use (RADAR SENSOR / FISH FINDER SENSOR / MULTI BEAM SONAR).

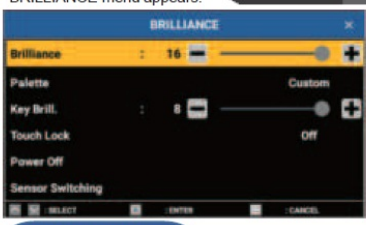
## Menu Operation

Tap  icon (shown on the top-left of the screen) to show the InstantAccess bar™.

InstantAccess bar™

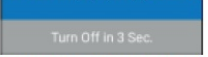
The contents of the BRILLIANCE menu are common to Radar sensor, Fish Finder sensor and Multi Beam Sonar. (The order of menu items changes according to the selected sensor.)

Short press  
BRILLIANCE menu appears.




**Turning Off the power**  
Long press

Power off pop-up appears after pressing the power key for over three seconds.




Keep pressing the power key for more three seconds after the pop-up window appears to turn off the power.


Short press



Setting menu appears.  
Close the menu by pressing again.

Drag the menu window up or down to scroll and tap the menu to set. (Or use the arrow keys to select the menu and press  key to set.)

Short press



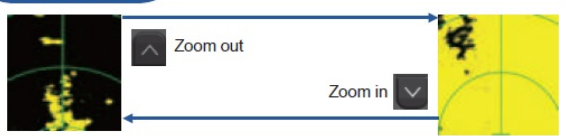
ADJUST (Echo Adjust) menu appears.

Menu Item	Details
Brilliance	Adjust the display brilliance.
Palette	Change the background color.
Key Brill.	Adjust the key brilliance.
Touch Lock	Lock the touch operation.
Power Off	Turn off the unit.
Sensor Switching	Move to sensor selection mode (③ on page 1).

Menu Item	Details
Gain	Adjust the radar gain.
Sea	Suppress the echo reflected from sea.
Rain	Suppress the echo reflected from rain or snow.
Int. Rejector	Reject interference.
Noise Rejector	Reduce the echo noise.

## Other key operations, function box and display

**Change the Range**



TX/STBY button

Range between the fixed range rings

Range

Cursor

Fixed range rings

Heading line

Heading

Tuning


Own ship position

**TLL Output and point**

Functions will differ according to the menu settings.

TLL Output	Output the current latitude and longitude position of the selected target to external equipment.
Fixed Mark	Record and display the current cursor longitude and latitude.

A maximum of 20 fixed marks can be displayed. When the maximum amount is exceeded, the oldest mark is automatically deleted.

To delete a fixed mark just after entering it, press the  key.

**Function Box**

OWN SHIP information

- Own ship L/L position, course, speed.

+

- L/L position of cursor
- Bearing, range, and time-to-go (TTG) to the cursor.

WAYPOINT

- Bearing to the waypoint.
- Range and time-to-go (TTG) to the waypoint.

TARGET

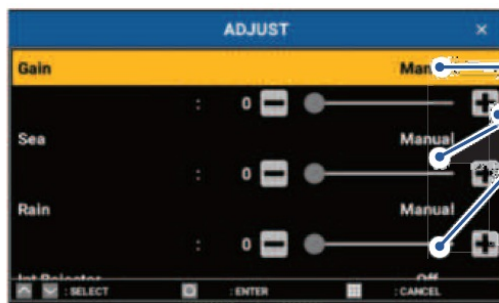
- Bearing, speed, course to the selected target.
- Range to the selected target.
- CPA (Closest Point of Approach) to the selected target.
- TCPA (Time to the Closest Point of Approach)

TRAIL

- Setting of trail (On/Off)
- Trail can be set from the InstantAccess bar™.

## Adjustment of Gain, Sea and Rain





When [Manual] is selected: Use the slider bar below selected item for adjustment.

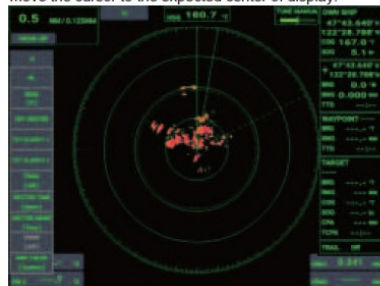
When [Auto] is selected: Adjustment is not available; the slider bar is grayed out.

The slider bar can be moved with the following two methods, in addition to tapping it.

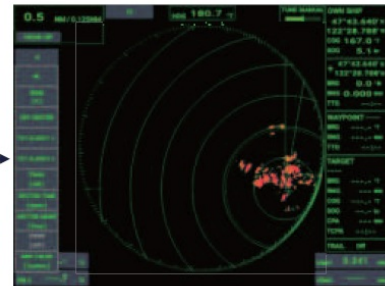
- Tap the [-]/[+] button on both sides of the slider bar.
- Press the [Left] key or [Right] key.

## Off-center

Move the cursor to the expected center of display.



Tap [OFF CENTER] of InstantAccess bar™.



## When Fish Finder Sensor is selected

Range  
AUTO: (Auto Mode)  
MANUAL: (Manual Mode)

Gain Settings  
G: 0.0~10 (Manual Mode)  
G: AF (Auto Mode: Fishing)  
G: AC (Auto Mode: Cruising)

Mode

Picture Advance Speed

Output Power

Interference Rejection

Alarm Icon

- Fish Alarm
- Temperature Alarm
- Depth Alarm
- Speed Alarm

Menu

MENU	ITEM	VALUE
SOUNDER	Pic. Advance	Stop
	Shift	-1 m
	Interference	OFF
DISPLAY	Color Erase	0 %
	Clutter	-1 %
IA BAR	White Marker	OFF
	TVG HF	-1
SYSTEM	TVG LF	-1
	Smoothing	OFF / On
Bottom Area	Bottom Area	-1 %
	Heaving Cor.	OFF / On
TX Rate Mode	TX Rate Mode	Manual
	TX Rate	-1
Transmit	Transmit	OFF / On

InstantAccess bar™

Range Auto

Range

Mode

Gain Auto

Offset HF

Offset LF

Gain HF

Gain LF

See the next page.

Brilliance Menu

Short Press

Brilliance

Touch Lock

Off / On

Palette

White

Brilliance

16

Key Brill.

0

Power Off

Sensor Switching

Move to sensor selection mode (③ on page 1).

The contents of the Brilliance menu are common to Radar sensor, Fish Finder sensor and Multi-Beam Sonar. (The order of menu items changes according to the selected sensor.)

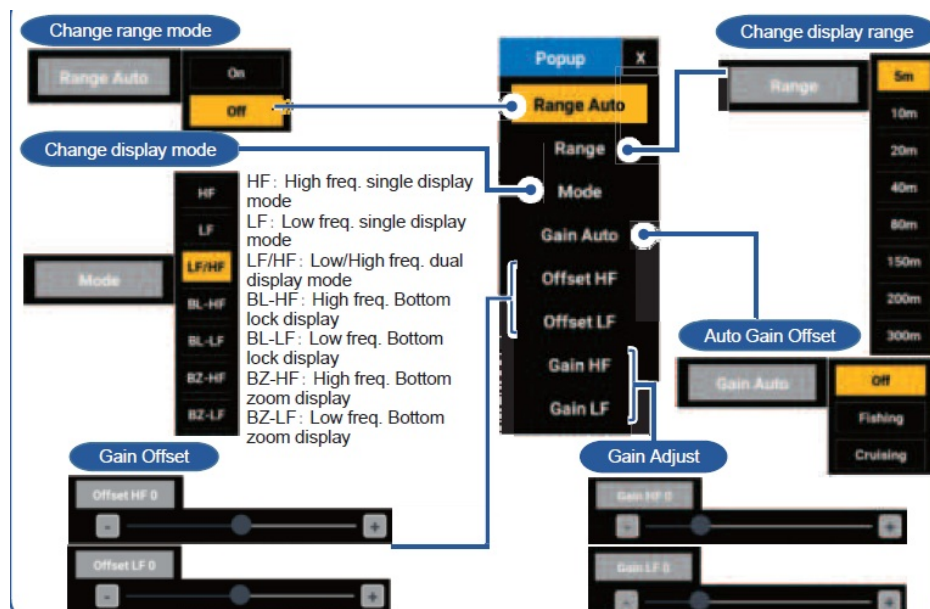
## How to display fish size

[Menu] to [DISPLAY] to [ACCU-FISH] to [ACCU-FISH] to [On]  
Fish Symbol (Selectable from four types)  
The symbol size changes with fish size.  
Fish Size/Depth 5.5  
(Selectable with [Fish Info].)

Size of number can be changed with [Info Size].

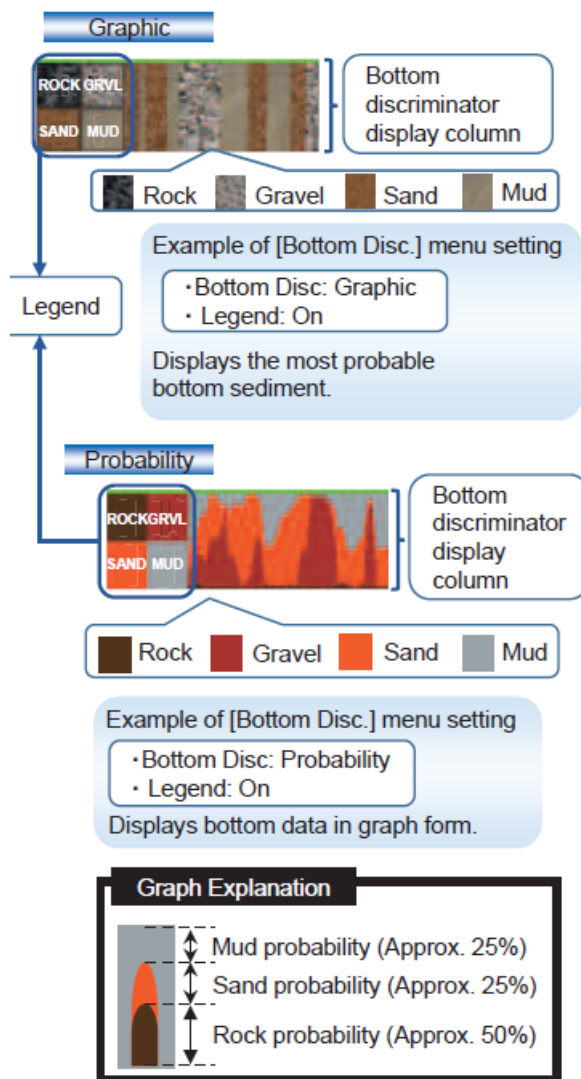
	Striped	Solid	Circle	Square
Large fish size (more than 50 cm, or more than 20 inches)				
Small fish size (10 to 49 cm, or 4 to 19 inches)				

## Pop up menu

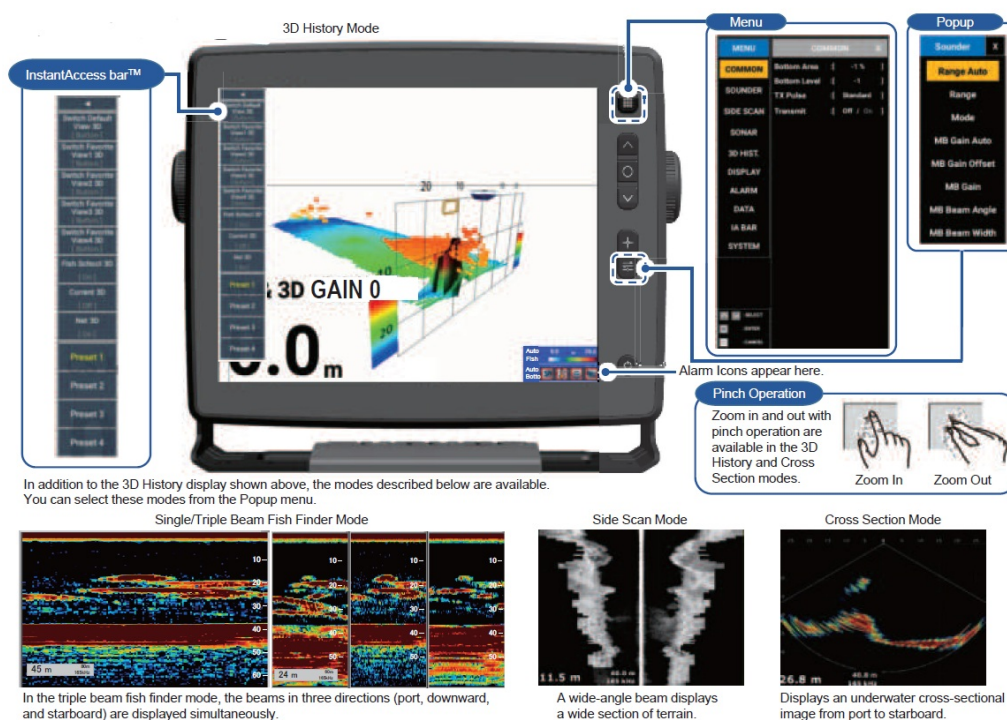


## Bottom Discrimination

[Menu] to [DISPLAY] to [Bottom Disc.] to [Type View] to Graphic or Probability

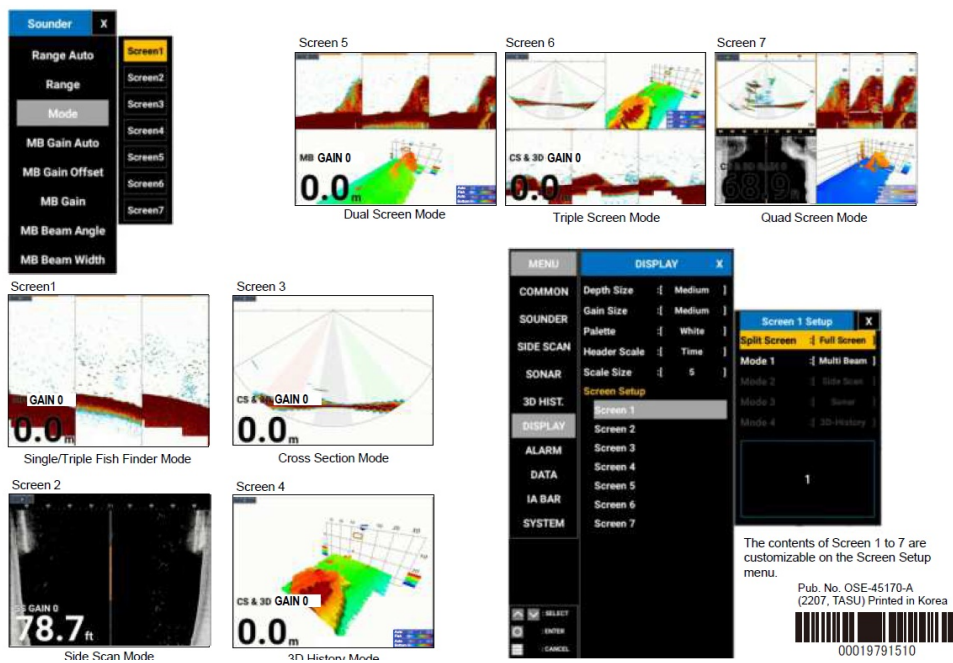


## When DFF-3D is selected




## Screen 17 Popup menu, Factory default)





## Documents / Resources

	<p><a href="#">FURUNO SFD-1010-1012 10-12 Inch Flex Function Display [pdf]</a> Installation Guide</p> <p>SFD-1010-1012 10-12 Inch Flex Function Display, SFD-1010-1012, 10-12 Inch Flex Function Display, Flex Function Display, Function Display, Display</p>
-----------------------------------------------------------------------------------	----------------------------------------------------------------------------------------------------------------------------------------------------------------------------------------------------------------------------------------------------------------