



[Home](#) » [Furnishing](#) » **Furnishing LGS301 Single Button Bluetooth RGB Controller User Manual** 

## Contents [ [hide](#) ]

- [1 Furnishing LGS301 Single Button Bluetooth RGB Controller](#)
- [2 Specifications](#)
- [3 Button switch function](#)
- [4 Software Overview](#)
- [5 Overview](#)
- [6 Features](#)
- [7 Performance](#)
- [8 Operating Environment](#)
- [9 App Operation](#)
- [10 FCC Warning](#)
- [11 Frequently Asked Questions](#)
- [12 Documents / Resources](#)
  - [12.1 References](#)

# Furnishing

## Furnishing LGS301 Single Button Bluetooth RGB Controller



## Specifications

- Compliance: Part 15 of the FCC rules
- Interference: Must not cause harmful interference
- Operation: Must accept any interference received
- Radiation Exposure: FCC limits for an uncontrolled environment
- Minimum Distance: 20cm between radiator and body

### Compliance with FCC Rules:

This device complies with part 15 of the FCC rules, ensuring that it meets regulatory standards for operation.

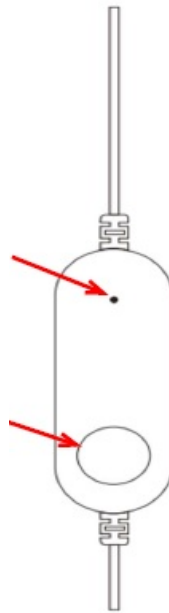
### Interference Management:

The device must not cause harmful interference and should accept any interference received to prevent undesired operation.

### Radiation Exposure Guidelines:

To comply with FCC radiation exposure limits, ensure a minimum distance of 20cm between the radiator of the device and your body during installation and operation.

## Button switch function



## Software Overview

### Overview

LotusLantern is a mobile APP to control the LED strip on both Apple and Android phones. The traditional control ways like infrared, 433MHz, 2.4GHz, and other old wired ways will be replaced by the mobile phone control way with convenient, powerful, and scalable features.

Through this mobile APP, you can not only control the color, brightness, and color temperature of the LED strips but also set up all kinds of fancy flash modes. Also, this APP can change the light of the LED strip according to the rhythm of the music. This APP can set and control several LED strips through Bluetooth, and the operation is very simple, easy to learn, and easy to use.

### Features

- Adjust color LED strips with 60,000 colors to change color and brightness, and adjust monochrome LED strips to change brightness and color temperature
- Play music or turn on a sound playback device, you can let the light change the color and brightness with the rhythm of music, the music rhythm is beautiful
- Inside multiple settings mode for color change and control LED strips without a mobile :
  - Once the connection is successful, connect automatically next time

- Long-distance control with an omni-directional antenna, and a many-to-many group control mode

## Performance

LotusLantern APP is easy to use as well as great compatible with all kinds of smartphones; After the actual test of hundreds of mobile phones, the compatibility is above 95% of mobile phones in the market. APP is small and convenient, it consumes fewer system resources, so the requirements of the mobile configuration are low. Control delay is small, the operation feels good, light control is smooth with people's visual sense.

## Operating Environment

- This APP program requires phones with a system above Android 4.3 and iOS 8.0. Mobile phone configuration is not limited.

## Instructions

**Note:** Android version and iOS version download and use the same method; here is the Android version as an example.

### APP Download Scan the QR code



OS and Android systems can download the "LotusLantern" APP by scanning the QR code. Open the browser or other tools with the "Scan QR code" function, scan the "LotusLantern" QR code as below:

## App Operation

1. Click on the LotusLantern APP icon, enter the APP page:



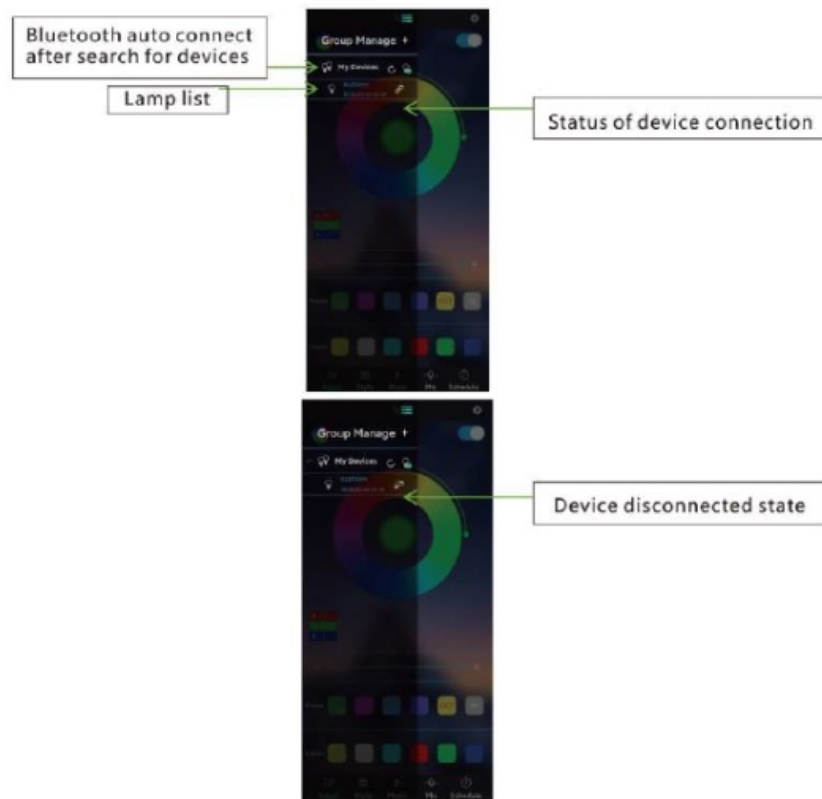
2. After entering the APP interface, if Bluetooth is not enabled, “Lout etooth .”Click [Allow]



3. Switch to the color and brightness interface:

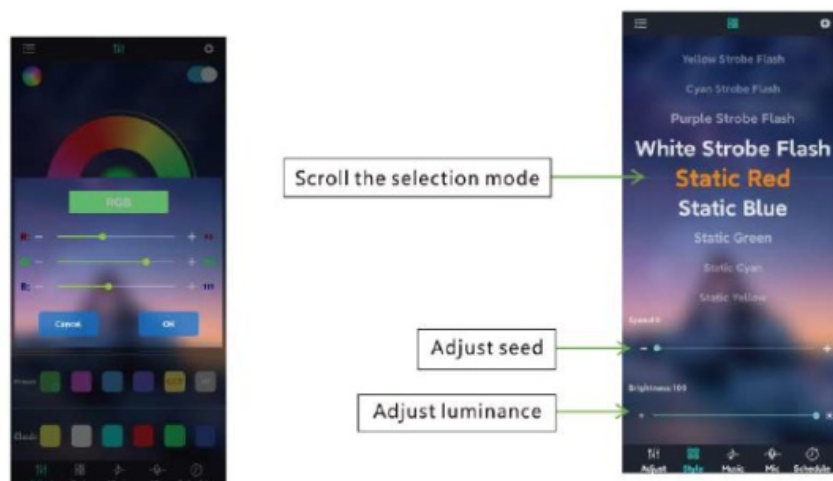


4. Click to show the lamp list, view lamp list:

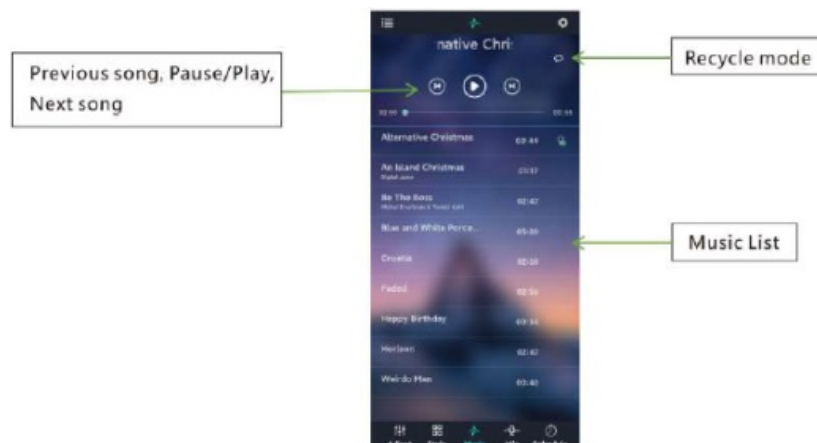


5. Click to RGB manual adjustment view.

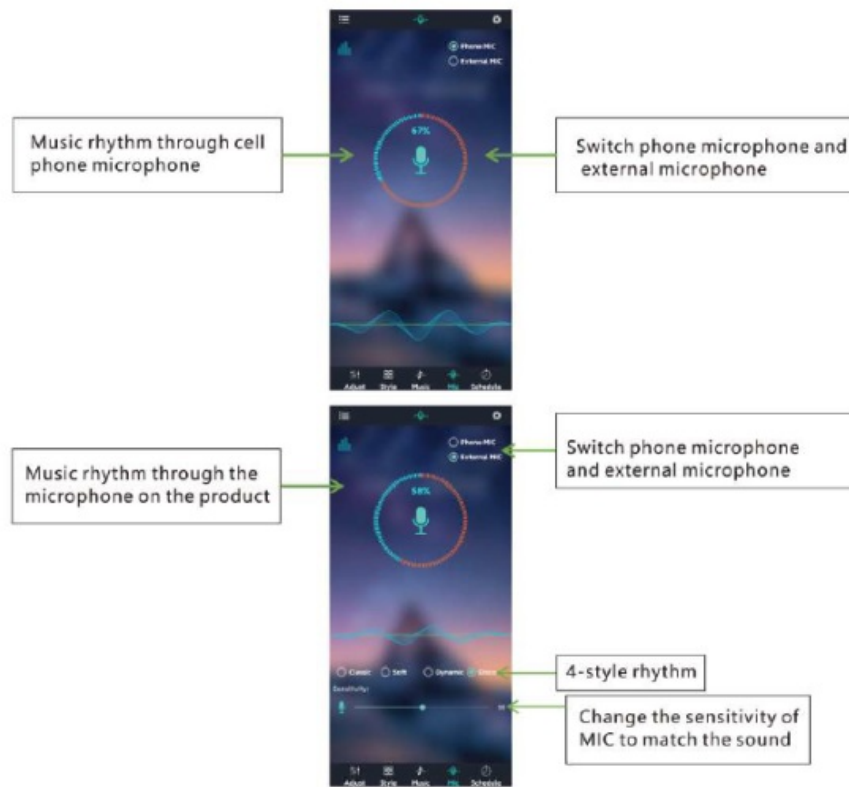
6. Switch to the mode interface:



7. Switch to the music rhythm interface:



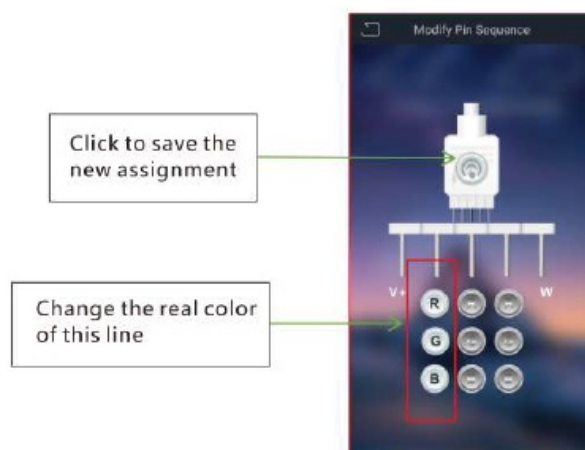
8. Switch to the microphone rhythm interface:



9. Switch to the schedule interface:



10. Switch to the modify pin sequence interface:



## FCC Warning

This device complies with part 15 of the FCC rules. Operation is subject to the following two conditions:

1. This device may not cause harmful interference, and
2. This device must accept any interference received, including interference that may cause undesired operation.

Changes or modifications not expressly approved by the party responsible for compliance could void the user's authority to operate the equipment.

**NOTE:** This equipment has been tested and found to comply with the limits for a Class B digital device, pursuant to part 15 of the FCC Rules. These limits are designed to provide reasonable protection against harmful interference in a residential installation. This equipment generates and uses and can radiate radio frequency energy and, if not installed and used according to the instructions, may cause harmful interference to radio communications. However, there is no guarantee that interference will not occur in a particular installation. If this equipment does cause harmful interference to radio or television reception, which can be determined by turning the equipment off and on, the user is encouraged to try to correct the interference by one or more of the following measures:

- Reorient or relocate the receiving antenna.
- Increase the separation between the equipment and receiver.
- Connect the equipment into an outlet on a circuit different from that to which the receiver is connected.
- Consult the dealer or an experienced radio/TV technician for help.

### **Radiation Exposure Statement**

This equipment complies with FCC radiation exposure limits set forth for an uncontrolled environment. This equipment should be installed and operated with a minimum distance of 20cm between the radiator and your body.

### **Frequently Asked Questions**

Q: What should I do if I encounter interference while using the device?

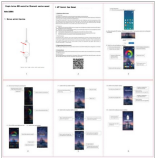
A: If you experience interference, try repositioning the device or adjusting its placement to minimize disruptions.



Q: Can I modify the device without approval?

A: No, changes or modifications not approved by the responsible party could void your authority to operate the equipment as per FCC regulations.

## Documents / Resources

	<a href="#">Furnishing LGS301 Single Button Bluetooth RGB Controller [pdf]</a> User Manual LGS301, LGS301 Single Button Bluetooth RGB Controller, Single Button Bluetooth RGB Controller, Bluetooth RGB Controller, RGB Controller
---	---

## References

- [User Manual](#)

■ Furnishing

◆ Bluetooth RGB Controller, Furnishing, LGS301, LGS301 Single Button Bluetooth RGB Controller, RGB Controller, Single Button Bluetooth RGB Controller

---

## Leave a comment

Your email address will not be published. Required fields are marked \*

Comment \*

Name

Email

Website

☐ Save my name, email, and website in this browser for the next time I comment.

Post Comment

Search:

e.g. whirlpool wrf535swhz

Search

[Manuals+](#) | [Upload](#) | [Deep Search](#) | [Privacy Policy](#) | [@manuals.plus](#) | [YouTube](#)

This website is an independent publication and is neither affiliated with nor endorsed by any of the trademark owners. The "Bluetooth®" word mark and logos are registered trademarks owned by Bluetooth SIG, Inc. The "Wi-Fi®" word mark and logos are registered trademarks owned by the Wi-Fi Alliance. Any use of these marks on this website does not imply any affiliation with or endorsement.