

***FUNPOWER***

**FUNPOWER  
FTW1211YG  
Remote Control  
Transmitter**



# FUNPOWER FTW1211YG Remote Control Transmitter User Manual

[Home](#) » [Funpower](#) » FUNPOWER FTW1211YG Remote Control Transmitter User Manual 

## Contents

- [1 FUNPOWER FTW1211YG Remote Control Transmitter](#)
- [2 Product Information](#)
- [3 Product Usage Instructions](#)
- [4 FAQ](#)
- [5 Operation Instructions](#)
- [6 Use Precautions](#)
- [7 FCC Instructions](#)
- [8 Documents / Resources](#)
  - [8.1 References](#)

***FUNPOWER***

**FUNPOWER FTW1211YG Remote Control Transmitter**



## Product Information

### Specifications

- Model: FTW1211YG
- Transmitter Type: Key transmitter
- LED Indicator: Indicates battery status
- Power Source: Battery
- FCC ID: 2ABUP-FTW1211YG
- IC Caution: IC25540-FTW1211YG

## Product Usage Instructions

### Battery Installation

Ensure the battery is correctly installed in the transmitter. If the LED indicator does not turn on when pressing the key, check the battery installation.

### Low Battery Warning

If the LED indicator flashes when pressing the key, it indicates low battery voltage. Replace the battery with a new one.

### Long-Term Storage:

When leaving the transmitter unused for an extended period, remember to remove the battery to prevent any potential damage.

## FAQ

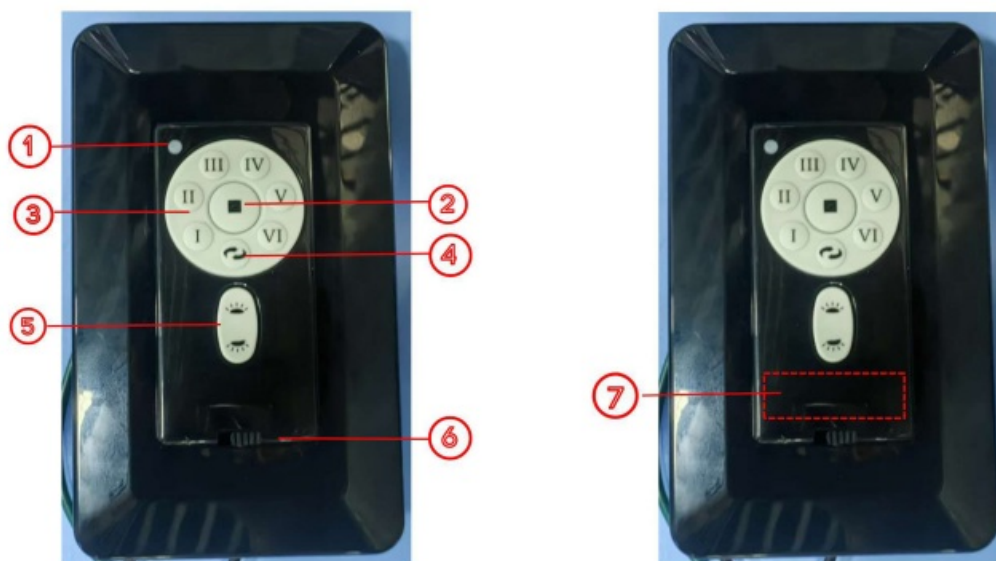
**Q: What should I do if the LED indicator does not light up when I press the key?**

A: Check the battery installation to ensure it is properly placed in the transmitter.

**Q: How do I know when to replace the battery?**

A: If the LED indicator flashes when you press the key, it means the battery has low voltage and needs replacement.

## Operation Instructions



1. LED Indicator
2. Fan OFF
3. Fan Speed I ~VI
4. Fan Forward/Reverse
5. Light Control
6. Receiver power switch
7. BATTERY: 12V/23Ax1

## Use Precautions

1. When press the key of transmitter, the LED indicator doesn't on, please inspect the battery installation.
2. When press the key of transmitter, the LED indicator flashing, that means the battery get low voltage, please replace a new one.
3. Please pull out of the battery from the transmitter when leaving unused for a long time.

## FCC Instructions

This product has been tested and found to comply with the limits for a Class B digital device, pursuant to Part 15 of the FCC Rules. These limits are designed to provide reasonable protection against harmful interference in a residential installation. This product generates, uses and can radiate radio frequency energy and, if not installed

and used in accordance with the instructions, may cause harmful interference to radio communications. However, there is no guarantee that interference will not occur in a particular installation. If the product does cause harmful interference to radio or television reception, which can be determined by turning the equipment off and on, the user is encouraged to try to correct the interference by one or more of the following measures:

- Reorient or relocate the receiving antenna.
- Increase the separation between the product and receiver.
- Connect the product into an outlet on a circuit different from that to which the receiver is connected.
- Consult the dealer or an experienced radio/TV technician for help.

This device complies with Part 15 of the FCC Rules. Operation is subject to the following two conditions:

1. this device may not cause harmful interference, and
2. this device must accept any interference received, including interference that may cause

### Undesired operation.

**Warning:** Changes or modifications not expressly approved by the party responsible for compliance could void the user's authority to operate the product.

The device has been evaluated to meet general RF exposure requirements.

The device can be used in portable exposure conditions without restriction.

FCC ID: 2ABUP-FTW1211YG

### IC Caution

#### RSS-Gen Issue 5

This device contains license-exempt transmitters/receivers) that comply with Innovation, Science and Economic Development Canada's license-exempt RSS(s). Operation is subject to the following two conditions:

1. This device may not cause interference.
2. This device must accept any interference, including interference that may cause undesired operation of the device.


Any changes or modifications not expressly approved by the party responsible for compliance could void the user's authority to operate the equipment.

### RF exposure statement:

The equipment complies with IC Radiation exposure limit set forth for uncontrolled environments.

The device has been evaluated to meet general RF exposure requirements. The device can be used in portable exposure conditions without restriction.

### Documents / Resources

	<p><a href="#">FUNPOWER FTW1211YG Remote Control Transmitter</a> [pdf] User Manual FTW1211YG, FTW1211YG Remote Control Transmitter, Remote Control Transmitter, Control Transmitter, Transmitter</p>
---	--

## References

- [User Manual](#)

[Manuals+](#), [Privacy Policy](#)

This website is an independent publication and is neither affiliated with nor endorsed by any of the trademark owners. The "Bluetooth®" word mark and logos are registered trademarks owned by Bluetooth SIG, Inc. The "Wi-Fi®" word mark and logos are registered trademarks owned by the Wi-Fi Alliance. Any use of these marks on this website does not imply any affiliation with or endorsement.