

**FULEN**

CL05 MOTION SENSOR  
CEILING LIGHT



## FULEN CL05 Motion Sensor Ceiling Light User Manual

[Home](#) » [FULEN](#) » FULEN CL05 Motion Sensor Ceiling Light User Manual 

### Contents

- [1 FULEN CL05 Motion Sensor Ceiling Light](#)
- [2 INTRODUCTION](#)
- [3 SPECIFICATIONS](#)
- [4 WHAT'S IN THE BOX](#)
- [5 FEATURES](#)
- [6 SETUP GUIDE](#)
- [7 CARE & MAINTENANCE](#)
- [8 TROUBLESHOOTING](#)
- [9 PROS & CONS](#)
- [10 WARRANTY](#)
- [11 FREQUENTLY ASKED QUESTIONS](#)
- [12 References](#)
- [13 Related Posts](#)

**FULEN**

**FULEN CL05 Motion Sensor Ceiling Light**



## INTRODUCTION

For contemporary lighting needs, go no farther than the state-of-the-art FULEN CL05 Motion Sensor Ceiling Light. Effortlessly blending efficiency and convenience, this LED-powered light enhances both usefulness and ambiance. With its motion-sensing technology, the CL05 (which retails for \$21.99) offers convenience and efficiency by turning itself on and off automatically. Its modern style and small footprint (7.28 x 7.28 x 0.59 inches) make it an adaptable choice for many spaces, including garages, closets, and corridors. The Lithium Polymer battery that powers this light guarantees that it will endure for a very long time. The FULEN CL05, which has been on sale since April 8, 2024, is a 400-lumen light bulb with a nice 3000 Kelvin color temperature. Whether you're in the market for a basic nightlight or a sophisticated smart home system, the FULEN CL05 has you covered with its dependable, energy-efficient, and aesthetically pleasing design.

## SPECIFICATIONS

<b>Brand</b>	FULEN
<b>Price</b>	\$21.99
<b>Power Source</b>	Battery Powered
<b>Light Source Type</b>	LED
<b>Voltage</b>	3.7 Volts
<b>Wattage</b>	1.5 watts
<b>Bulb Base</b>	E5
<b>Controller Type</b>	Remote Control
<b>Brightness</b>	400 Lumen
<b>Efficiency</b>	266.67 lumens/watt
<b>Color Temperature</b>	3000 Kelvin
<b>Product Dimensions</b>	7.28 x 7.28 x 0.59 inches
<b>Weight</b>	13.05 ounces
<b>Item Model Number</b>	CL05
<b>Batteries</b>	1 Lithium Polymer battery required
<b>Date First Available</b>	April 8, 2024
<b>Manufacturer</b>	FULEN
<b>Country of Origin</b>	China

**WHAT’S IN THE BOX**

- Motion Sensor Ceiling Light
- User Manual



## FEATURES

- **Motion Detection:** The light's 120-degree motion sensor detects motion within a 3-to-16-foot radius, allowing for quick activation.

# Motion Sensor Light

Suitable for bathrooms, cloakrooms, storage rooms, balconies, etc.  
Enough to illuminate an area of 16 ft<sup>2</sup>



- **Modes:** The three modes of the motion detector are as follows: [Day] for 24/7 motion detection, [Night] for low light activation, and [Steady] for constant light.
- **Battery:** Eliminates the need for throwaway batteries, minimizing waste, with its upgraded rechargeable battery that includes a powerful 6000mAh.



# Rechargeable Battery 6000mAh

Charge once, use for 60 days ( in Night mode)

- **Extended Runtime:** After a quick charge (around 5-6 hours), you can use it for over a month in motion detection mode and up to 10 hours in steady state.
- **Color Temperature:** You may adjust the color temperature of the light to suit your needs. It comes with three options: warm white (3000K), natural light, and cool white.



- **Brightness Control:** Control the light's brightness to your liking with the included remote or the on-board buttons.
- **Shut-Off Timer:** An automatic 30-minute shut-off timer is included, which is great for saving energy and making sure the light doesn't stay on for no reason.
- **Installation:** No need for intricate wiring or drilling with cordless installation. The light's metal plates and built-in magnets make it simple to attach and remove.



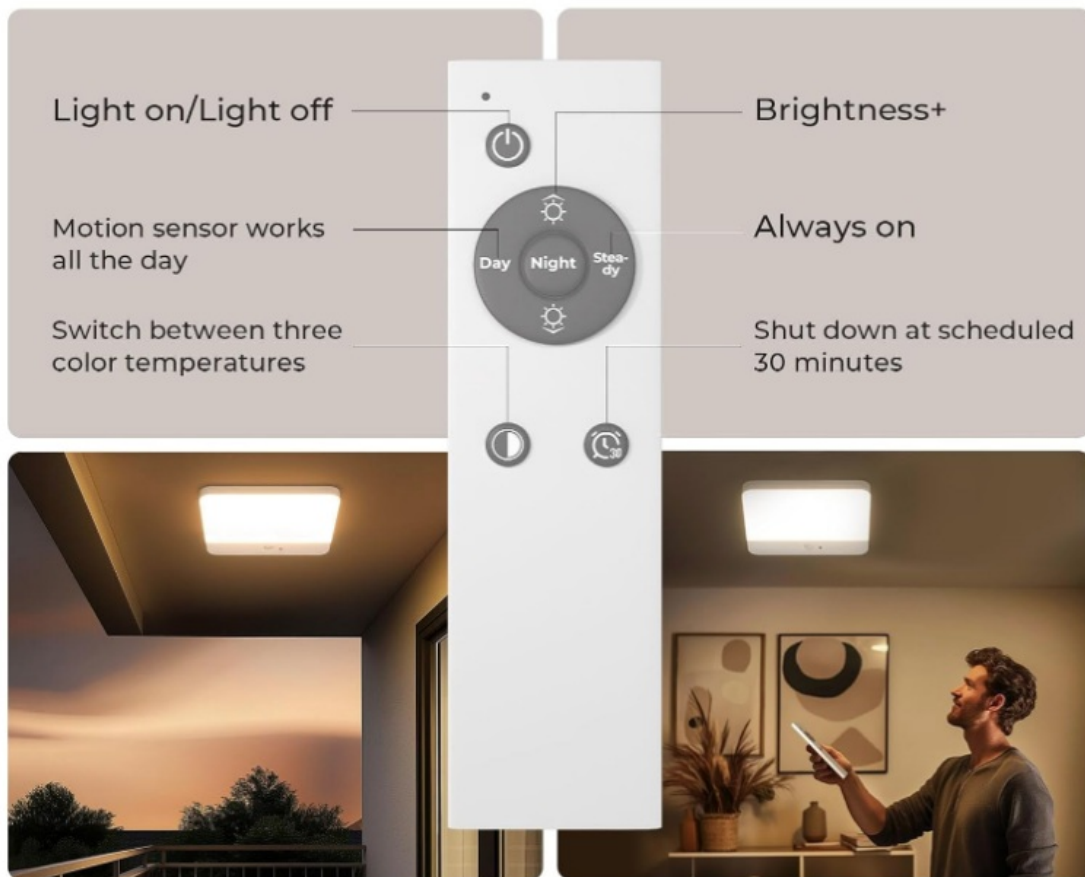


- **Magnetic Mounting:** The light is simple to install and remove for charging or repositioning thanks to its magnetic mounting, which allows it to connect to the ceiling with ease.
- **Profile:** The light's narrow profile, at only 0.63 inches thick, makes it ideal for use in confined areas without sacrificing visibility.
- **Usage:** Ideal for a wide range of areas, this light is perfect for use in restrooms, closets, stairwells, garages, and corridors, among other places.
- **Power Efficiency:** Very Efficient: With a power usage of only 266.67 watts per watt, this lamp produces a brilliant light with very little power used.
- **Light Output:** 400 Lumens of Light: This light source produces 400 lumens of light, which is more than enough to illuminate smaller areas or those with specific lighting needs.
- **Battery Type:** It is an eco-friendly, low-maintenance lighting solution that runs on a single 3.7V lithium polymer battery.
- **Remote Control:** Included with a convenient remote control, you may change the mode, color temperature, and brightness levels without getting out of your chair.



# All-in-one Remote Control

Motion sensor | 3 color temperatures | 30 minutes timer



## SETUP GUIDE

- **Remove Items from Packaging:** Carefully remove the light unit, remote control, and metal plates from the packaging and inspect them all before putting the light fixture together.
- **Charge Battery:** Before you install the light, make sure the 6,000mAh battery is fully charged for 5-6 hours. This will ensure that the light works at its best.
- **Choose Installation Spot:** Find a Good Spot to Install the Light: A shady nook, hallway, restroom, or even a spare closet would work.
- **Prepare Ceiling:** Get the Ceiling Ready: To make sure the magnetic mount stays there, clean the surface of the ceiling.
- **Install Metal Plate:** Put the Metal Plate on the Ceiling: Use the included screws or glue to put the metal plate on the ceiling wherever you like.
- **Mount the Light:** To Set Up the Light, Just Slide the Light Into Place On The Metal Plate And Let The Magnets Do The Work.
- **Turn on the Light:** Turn on the Light: Either use the included buttons or the remote to turn on the light. Before settling on a configuration, try out all of the motion sensor modes.
- **Adjust Motion Detection:** Choose between [Day] for continuous motion detection and [Night] for low light activation to set the motion detection range according to your illumination demands.
- **Adjust Color Temperature and Brightness:** Change the Color Temperature and Brightness: Choose between warm white, natural light, and cool white using the light buttons or the remote control.
- **Set Timer:** Make Use of the Timer: To Save Energy, Set the Automatic Shut-Off Timer to 30 Minutes.

- **Test Motion Sensor:** Be Sure It Works By Walking Within Its Detection Range (3-16 feet), you can check if the light's motion sensor is working correctly.
- **Install Batteries in Remote:** In order for the remote control to work, you may need to insert batteries into it.
- **Check Alignment:** Check the Alignment: Make sure the light is positioned at the right height and angle so it can detect motion.
- **Monitor Battery Life:** Keep an eye on the battery life of the light and charge it whenever it shows signs of low power.
- **Reposition if Necessary:** Take the light down from its magnetic base and transfer it to a new spot if it's not working.

## CARE & MAINTENANCE

- **Regular Charging:** To get the most out of both the motion-detecting and stable modes, charge the light regularly (every 5 to 6 hours).
- **Clean Surface:** To clean the surface of the light, use a gentle cloth to wipe off any dust or grime that has accumulated.
- **Use Gentle Cleaning:** To preserve the surface of the light, use a gentle cleaning and stay away from harsh chemicals. You should never clean with anything that is rough or harsh.
- **Avoid Overcharging:** To keep the battery from dying too soon, check that it is not over or undercharged.
- **Clean Magnetic Mount:** Make sure the magnetic mount is clean and free of debris on a regular basis to ensure it stays attached to the ceiling.
- **Protect Remote Control:** Be Wary When Using the Remote Control: Put the remote control somewhere safe and don't drop it to keep it in good condition.
- **Clear Obstructions:** Verify Motion Sensor: Clear any obstructions that can hinder the motion sensor's ability to work.
- **Test Sensor Regularly:** Keep an Eye On Motion Detection: Make sure the motion sensor is working correctly by testing it on a regular basis.
- **Replace Remote Batteries:** In the event that the remote control is no longer responsive, try replacing the batteries.
- **Avoid Humid Environments:** It is important to keep the light fixture out of places with high humidity or too much moisture to avoid damaging the electrical components.
- **Keep Dry:** Keep It Dry: To keep the light safe from moisture and heat, put it away when it's not in use for long periods of time.
- **Tighten the Light:** Make Sure the Light Is Tight: To prevent any mishaps or harm, make sure the light is tight against the ceiling.
- **Inspect LEDs:** Be sure to inspect the LEDs for signs of wear and tear; the brightness of LEDs can gradually fade with time. Get in touch with the maker for assistance if you see any fading.
- **Reposition Light for Coverage:** To Get the Best Coverage: If you want to make sure that regions that aren't covered by motion detector are adequately illuminated, you can move the light to different positions.
- **Protect Remote Control:** To extend its life and keep it working properly, keep the remote control out of direct sunlight and extremely hot environments.

## TROUBLESHOOTING

Issue	Solution
Light does not turn on	Check if the battery is installed correctly and is charged.
Light flickers intermittently	Ensure the motion sensor is clean and not obstructed.
Motion sensor not detecting movement	Adjust the sensor's position to a better angle for detection.
Battery drains quickly	Replace the battery with a new, high-quality Lithium Polymer battery.
Remote control not working	Check if the remote's battery needs replacement or is in range.
Light dims after use	This may be due to low battery power; replace or recharge the battery.
Light stays on continuously	Reset the motion sensor by turning the light off and on again.
Color temperature seems off	Ensure the light is not placed near heat sources or direct sunlight.
Sensor coverage area seems too small	Ensure there are no objects blocking the sensor's view.
Water damage or corrosion	Inspect for signs of moisture damage and replace any damaged components.

## PROS & CONS

### Pros

1. Motion sensor functionality ensures hands-free operation.
2. Energy-efficient LED with 400 lumens brightness.
3. Remote control allows for easy adjustment.
4. Compact and sleek design, perfect for tight spaces.
5. Long-lasting battery life for continuous use.

### Cons

1. Requires Lithium Polymer batteries, which may need replacing.
2. Limited brightness for larger spaces.
3. Color temperature may not suit all preferences.
4. Battery-powered design may need frequent charging.
5. May not work well in extremely high-moisture areas.

## WARRANTY

The FULEN CL05 Motion Sensor Ceiling Light comes with a **1-year limited warranty** that covers any manufacturer defects or issues arising from normal use. The warranty excludes damages caused by improper installation, misuse, or modifications.

## FREQUENTLY ASKED QUESTIONS

What is the FULEN CL05 Motion Sensor Ceiling Light?

The FULEN CL05 Motion Sensor Ceiling Light is a battery-powered LED light designed for ceiling installation. It uses motion sensors to automatically illuminate a room when movement is detected, offering 400 lumens of brightness.

What is the price of the FULEN CL05 Motion Sensor Ceiling Light?

The FULEN CL05 Motion Sensor Ceiling Light is priced at \$21.99, providing an affordable lighting solution with advanced motion-sensing technology and efficient LED lighting.

What type of light source does the FULEN CL05 Motion Sensor Ceiling Light use?

The FULEN CL05 Motion Sensor Ceiling Light uses high-efficiency LED light sources, ensuring bright illumination while consuming minimal energy, producing 400 lumens at 1.5 watts.

What is the brightness of the FULEN CL05 Motion Sensor Ceiling Light?

The FULEN CL05 Motion Sensor Ceiling Light offers a brightness of 400 lumens, ensuring adequate lighting for any room while maintaining energy efficiency at 266.67 lumens per watt.

What is the power source for the FULEN CL05 Motion Sensor Ceiling Light?

The FULEN CL05 Motion Sensor Ceiling Light is powered by a Lithium Polymer battery, providing convenient, cordless operation without the need for direct power connections.

What is the voltage of the FULEN CL05 Motion Sensor Ceiling Light?

The FULEN CL05 Motion Sensor Ceiling Light operates at a voltage of 3.7 volts, ensuring safe and efficient energy consumption for optimal performance.

What are the product dimensions of the FULEN CL05 Motion Sensor Ceiling Light?

The FULEN CL05 Motion Sensor Ceiling Light has dimensions of 7.28 x 7.28 x 0.59 inches, making it compact and suitable for a variety of ceiling installations without taking up too much space.

What is the weight of the FULEN CL05 Motion Sensor Ceiling Light?

The FULEN CL05 Motion Sensor Ceiling Light weighs 13.05 ounces, making it lightweight and easy to handle during installation or maintenance.

## References

- [User Manual](#)

[Manuals+](#), [Privacy Policy](#)

This website is an independent publication and is neither affiliated with nor endorsed by any of the trademark owners. The "Bluetooth®" word mark and logos are registered trademarks owned by Bluetooth SIG, Inc. The "Wi-Fi®" word mark and logos are registered trademarks owned by the Wi-Fi Alliance. Any use of these marks on this website does not imply any affiliation with or endorsement.