

FUJITSU GENERAL
DS-control-02
Centralized
Control Settings



fujitsu-general DS-control-02 Centralized Control Settings User Guide

[Home](#) » [Fujitsu General](#) » fujitsu-general DS-control-02 Centralized Control Settings User Guide 

Contents

- 1 fujitsu-general DS-control-02 Centralized Control Settings
- 2 Centralized control settings
- 3 Product Specifications
- 4 Product Usage Instructions
- 5 Frequently Asked Questions
- 6 Documents / Resources
 - 6.1 References

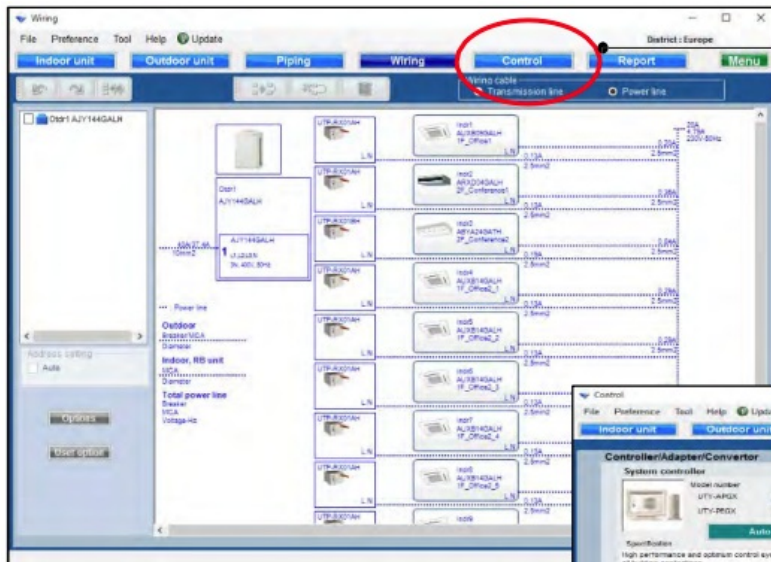
FUJITSU GENERAL

fujitsu-general DS-control-02 Centralized Control Settings



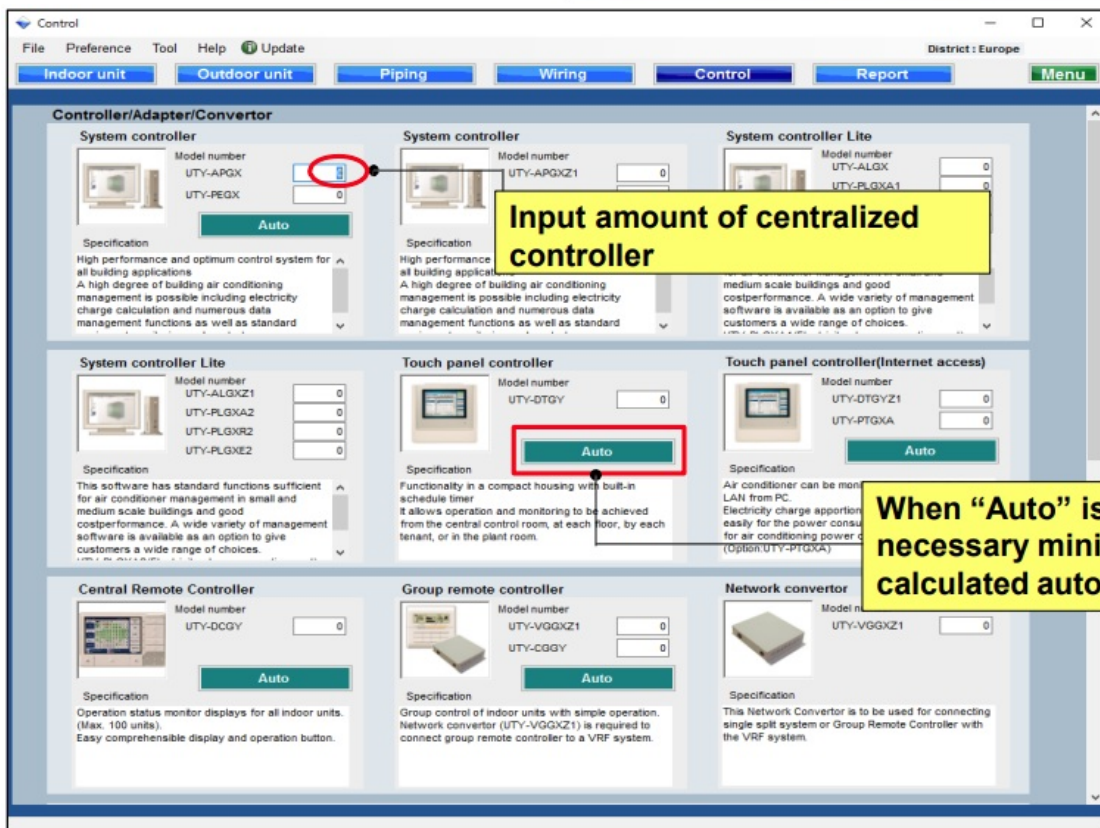
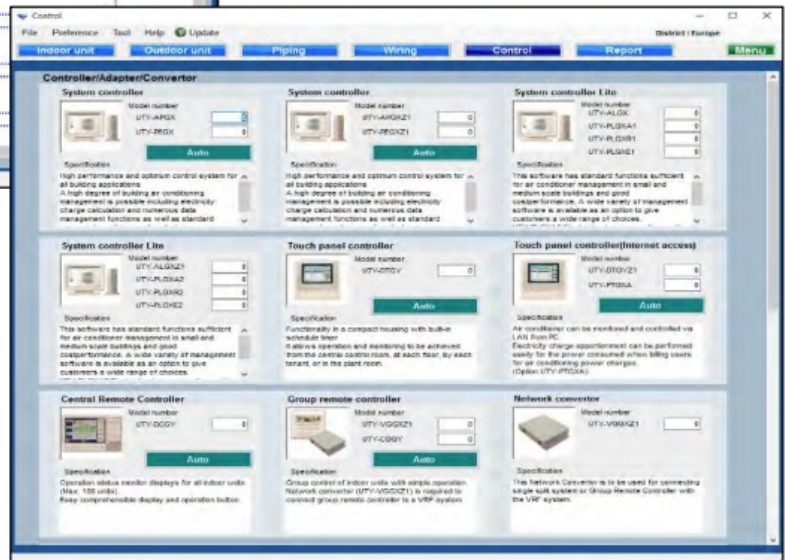
Centralized control settings

Design Simulator




Select "Control"

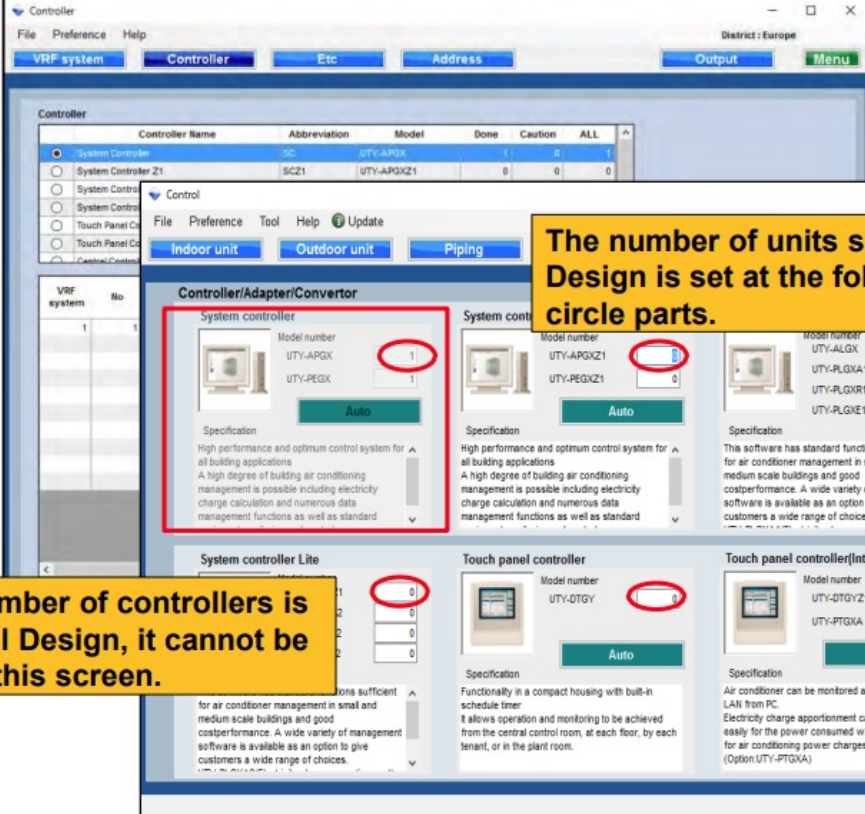
Change to centralized control initial screen



Input amount of centralized controller

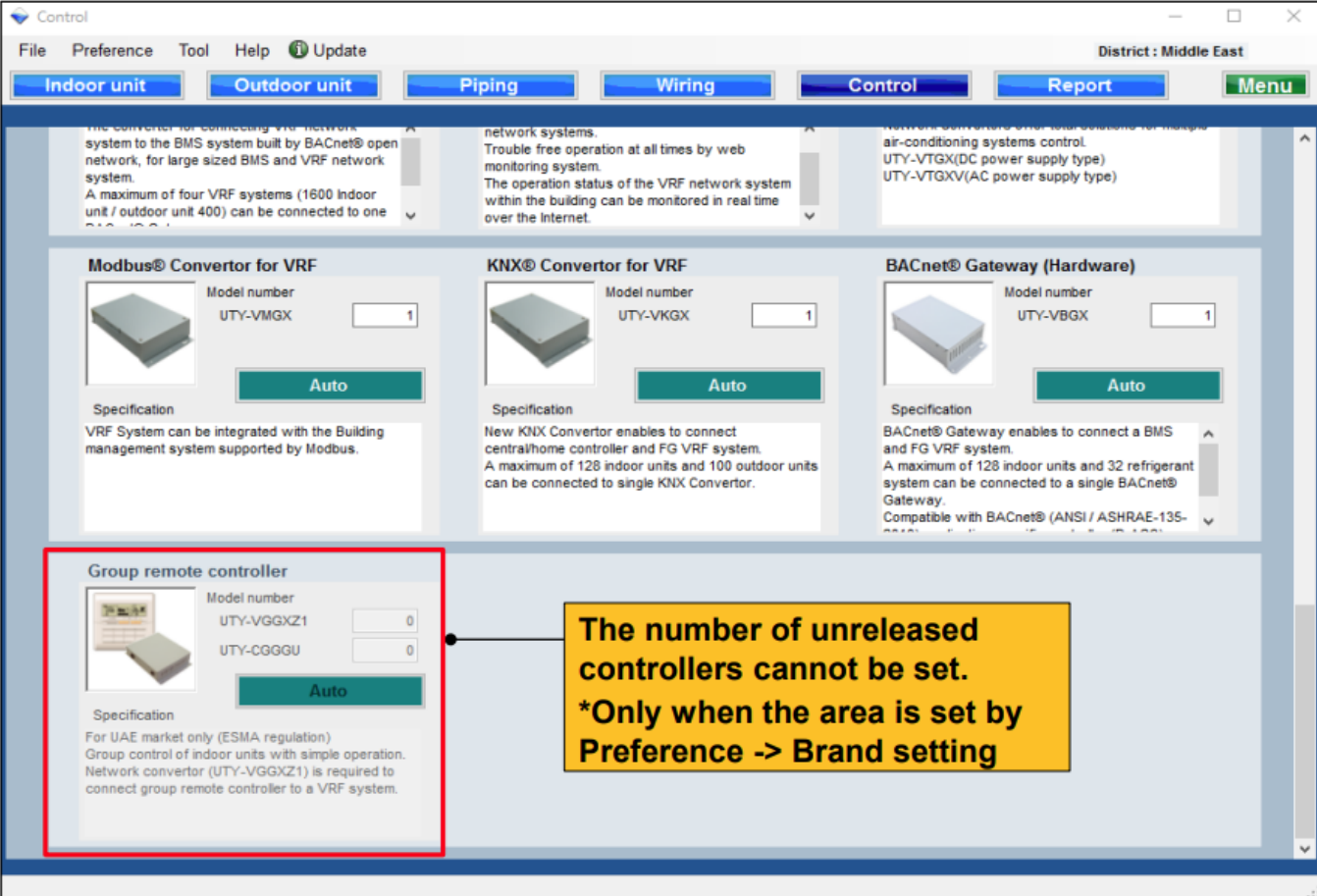
When "Auto" is selected, necessary minimum amount is calculated automatically.





The number of units set at Control Design is set at the following red circle parts.

When the number of controllers is set at Control Design, it cannot be changed on this screen.



**The number of unreleased controllers cannot be set.
*Only when the area is set by Preference -> Brand setting**

Product Specifications

- Centralized control settings
- Design Simulator
- Auto calculation feature for minimum amount
- Control Design unit setting

- Brand setting for area control

Product Usage Instructions

Centralized Control Settings

To access centralized control settings, navigate to the settings menu on the device.

Design Simulator

Utilize the design simulator feature to visualize and test control designs.

Select Control

Choose the control option to make adjustments or selections.

Input Amount of Centralized Controller

Enter the required number of centralized controllers. When 'Auto' is chosen, the minimum amount will be calculated automatically.

Setting Control Design Units

The number of units set at Control Design will be displayed in red circles. Once set, it cannot be changed on the current screen.

Managing Unreleased Controllers

You cannot set the number of unreleased controllers directly. This may be influenced by the Brand setting under Preferences.

Frequently Asked Questions

Q: How do I change the number of controllers in Control Design?

A: The number of controllers set in Control Design cannot be altered from the current screen.


Q: What does the 'Auto' setting do for centralized controllers?

A: When 'Auto' is selected, the system will automatically calculate the minimum required amount of centralized controllers.

Q: Can I adjust unreleased controllers directly?

A: The number of unreleased controllers cannot be manually set, and it may be impacted by specific Brand settings in Preferences.

Documents / Resources

| | |
|-------------------------------------------------------------------------------------|----------------------------------------------------------------------------------------------------------------------------------------------------------------------------------------------------------|
|  | fujitsu-general DS-control-02 Centralized Control Settings [pdf] User Guide DS-control-02 Centralized Control Settings, DS-control-02, Centralized Control Settings, Control Settings |
|-------------------------------------------------------------------------------------|----------------------------------------------------------------------------------------------------------------------------------------------------------------------------------------------------------|

References

- [User Manual](#)

