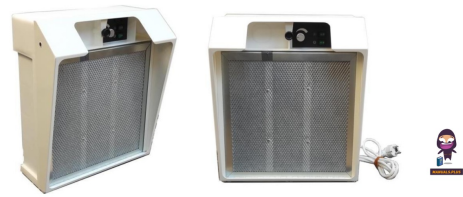


**FTM Technologies HI1P Built-in Hood**



## FTM Technologies HI1P Built in Hood User Manual

[Home](#) » [FTM Technologies](#) » FTM Technologies HI1P Built in Hood User Manual 

### Contents

- 1 FTM Technologies HI1P Built-in Hood
- 2 Product Usage Instructions
- 3 Frequently Asked Questions
- 4 PRODUCTS COVERED BY THE LEAFLET
- 5 TECHNICAL DESCRIPTION
- 6 SAFETY RECOMMENDATIONS
- 7 INSTALLATION MOUNTING OF EQUIPMENT
- 8 SPECIFIC CASE MOUNTING OF THE H14 HEPA FILTER
- 9 MUFFLER INSTALLATION OPTIONAL
- 10 START-UP AND OPERATION
- 11 CARE AND MAINTENANCE
- 12 SPARE PARTS, CONSUMABLES
- 13 Documents / Resources
  - 13.1 References



**FTM Technologies HI1P Built-in Hood**



## Specifications

- **Main Features of Products:** Fume hoods for soldering and desoldering, specialized tools for wiring and tinning, hand tools, consumables, and workshop equipment
- **Dimensions (L x W x D):** 430 x 350 x 200 mm
- **Power:** 80 W (except for HI2P & HI4P models)
- **Lighting:** Yes (72 for HI2P & HI4P models)
- **Air Flow (m3/h without filter):** 50-450
- **Weight:** 3.7 kg
- **Noise Level (dBA @ 1 m from the hood at max speed):** 60
- **Power Supply:** Single-phase alternating grounded current 110 – 240 V, 50 – 60 Hz and low voltage supply 24VDC for the motor

## Product Usage Instructions

### Installation and Mounting

- Follow the installation guidelines provided in the manual to mount the unit securely.

### Filter Selection

- Choose the appropriate filtering material based on the type of pollutants and usage requirements. Ensure proper maintenance and replacement of filters.

### Start-up and Operation

- Turn on the unit using the manual control button. Adjust the rotational speed of the motor as needed for effective ventilation.

### Care and Maintenance

- Regularly clean and inspect the unit to ensure optimal performance. Replace filters as recommended by the manufacturer.

## Frequently Asked Questions

### Q: Can I use the hood without external rejection in all cases?

**A:** It is recommended to aim for external rejection to maintain a clean working atmosphere. However, in specific cases where pollutants are well controlled and filter capacity is monitored continuously, internal recycling can be considered.

### Q: How do I select the appropriate filter for my extraction hood?

**A:** Choose the filter based on the nature of pollutants and usage requirements. Refer to the manual for filter specifications and compatibility with different hood models.

**Dear Customer,**

You have just purchased a FTM Technologies product. We thank you for your confidence. Please read this manual carefully before using your equipment.

## PRODUCTS COVERED BY THE LEAFLET

- **VISOR HOOD REF HI1P**
- **BUILT-IN HOOD REF HI2P**
- **SUITCASE HOOD REF HI3P**
- **DESKTOP FUME HOOD HEPA REF HI5P HEPA**
- **MULTIOPERATOR HOOD\* REF HI4P**
- **FUME CABINET REF HI5VP REF HI5VPP REF HI5VPC REF HI6VP REF HI7VP REF HI7VPR**
- **SUSPENDED HOOD REF HI9P MACHINE SAFETY ENCLOSURES REF HI10VP REF H10VPH**
- **Two options are available:**
  - **REF HI4P4S:** 4 inlets Ø 75 mm
  - **REF HI4P6S:** 6 inlets Ø 50 mm

## TECHNICAL DESCRIPTION

### Main features of products

Dimensions L x w x d	Power W	Lighting	Airflow m3/h (without filter)	Weight kg	Db 1 m from the hood at max speed
430 x 350 x 200	80 72 for HI2P & HI4P	YES excluding HI2P & HI4P	50-450	3,7	60

- It is possible to obtain a reinforced flow unit. Power 100 W, airflow 50-600 m3 / h

- All hoods are powered by single-phase alternating grounded current 110 – 240 V, 50 – 60 Hz and a low voltage supply of 24 VDC for the motor.
- The body of the hood is made of polypropylene, with good resistance to alkaline chemicals. The operating temperature limits are -20 ° to + 65 ° C (bending temperature under a load of 0.46N / mm<sup>2</sup>).
- In the upper part of the body, completely isolated from the suction circuit, the electrical control of the suction fan motor and the lighting system are installed.
- The modulation of the rotational speed of the motor of the ventilator, ensured by an electronic variator is obtained by the manual control of a button located on the front face of the hood.
- Purification of the sucked air is ensured by the installation of a filtering body.

### **Choice of filtering material**

- The filtering material will be determined according to the use of the extraction hood, as well as depending on the nature of the pollutants.
- To preserve the cleanliness of the working atmosphere, it is better to aim at the elimination of the air sucked by the hood to the outside.

### **The use of the hood without rejection to the outside is possible in certain specific cases where:**

- The nature and concentration of the pollutants are well-controlled
- Continuous verification of the capacity of the filtering element is ensured

### **The filter, mounted in a metal box, adapts to all hood models and has the following characteristics:**

Reference	Designation	Classification
PFP1	Protection pre-filter (batch of 10)	G3
PF3	Protection pre-filter (batch of 10)	M5
FPP1	Dust filter for outer rejection	G4
FAP1	Particle filter for internal recycling	M5
FCP1	Activated carbon filter (vegetal, for solvents and gas)	N/A
FCP1 min	Activated carbon filter (mineral) for acetone	N/A
FCP1 blend	Activated carbon filter combined with alumine and KMnO <sub>4</sub> (Formaldéhyde and other products)	N/A
FCP1-FT H <sub>2</sub> SO <sub>4</sub>	Activated carbon filter impregnated with sulfuric acid (for alkali)	N/A
FCP1-FT KOH	Activated carbon filter impregnated with potash (for acids)	N/A

## **SAFETY RECOMMENDATIONS**

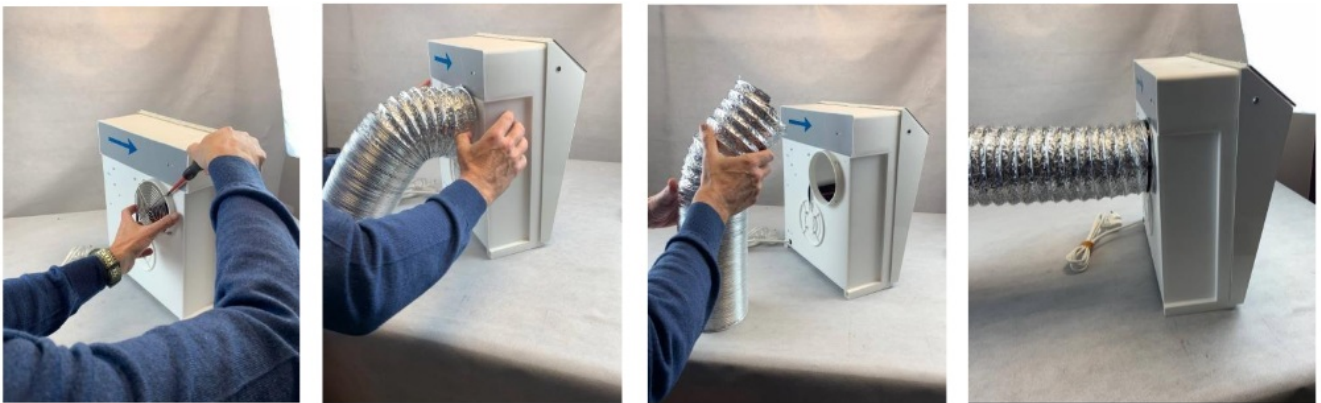
- This device is not intended for use by persons (including children) whose physical, sensory or mental capabilities are impaired; or persons without experience or knowledge, unless they have been able, through a person responsible for their safety, to have prior surveillance or instructions concerning the use of the device.

Children should be supervised to ensure that they do not play with the appliance.

- **WARNING:** BEFORE ANY INTERVENTION (FOR EXAMPLE FILTER REPLACEMENT) BE SURE TO DISCONNECT THE HOOD.
- Avoid aspiration of liquids as well as acid products. In case of an error, immediately stop operation, and clean and dry the splashed parts thoroughly, before restarting the installation.
- Avoid the aspiration of the flames. These can damage the Filter as well as the booth.
- Avoid contact with very hot or incandescent parts.
- Avoid working in a damp room.

## INSTALLATION MOUNTING OF EQUIPMENT

- Put the hood on a flat and horizontal surface to prevent it from tipping over.
- In the event of an external discharge: Fix the discharge pipe in such a way as not to introduce any stresses that are detrimental to stability.
- Unscrew the rear grille from the box
- Slide the 125 mm diameter hose onto the collar
- Secure the hose using the clamp provided
- Take care to extend the hose to the point of external discharge, avoiding elbows as much as possible.



- Check that the length of the power supply cable is compatible with the distance between the hood and the power plug.
- Check that this socket has single-phase alternating grounded current wire 110 – 240 V, 50- 60 Hz. It must be secured by a protection system guaranteeing the safety of the user.
- Open the front panel and position the appropriate filter for the intended use.

### Installation of the activated carbon filter (identical to the particulate filter or external discharge)

- Unscrew the knurled knob on the front face of the hood and tilt the face.
- Install the filter (first remove the tip that may be attached to the filter frame).



### Installing the pre-filter on the main filter

- This pre-filter is intended to protect the activated carbon filter from any clogging.
- Position the pre-filter on the main filter. Make sure that the longer side of the pre-filter is placed horizontally to facilitate pinching of the latter from the front.



- Refit the front of the hood.

### SPECIFIC CASE MOUNTING OF THE H14 HEPA FILTER





1. Place the pre-filter
2. Place the H14 HEPA filter above the pre-filter
3. Place the FCP1 filter and close the hood

## MUFFLER INSTALLATION OPTIONAL

- Disassemble the rear grille by removing the 4 screws.
- Insert the angled end of the silencer into the flange and make sure it is securely fastened. The maintenance is done only by pressure, so you have to fit everything together.



## START-UP AND OPERATION

### Getting started

- Check that the switches, motor and lighting are in position .0.
- Check that the fan motor speed control knob is in the minimum position: in this position, the engine is idling.
- Connect the electrical outlet.
- Switch on the switches, motor and possibly lighting.
- Change the speed of rotation to obtain the necessary suction flow.
- It is recommended to favour a reduced speed when using an activated carbon filter and a maximum speed with a particulate filter.

### **Stopping the aspiration**

- To stop aspiration, set the motor switch to the .0 position.



- During a long shutdown, disconnect the power supply.

## **CARE AND MAINTENANCE**

**WARNING:** BEFORE ANY OPERATION REMOVE THE ELECTRICAL CORD FROM THE POWER SUPPLY.

### **Extraction Unit:**

- The cleaning of the case is done with soapy water.
- After cleaning, carefully wipe off any moisture.
- Avoid contact between the liquid cleaning product and the electrical parts of the installation.

### **Filters:**

- Ref FPP1 (dust removal), FAP1 and FA2 (aerosols).
- The clogging of the filters depends on the time of use, the nature and the concentration rate of dust in the aspirated atmosphere.
- In workplaces where these parameters are controlled, the life of a filter can be well determined. Cleaning and replacement can be planned; this simplifies both routine maintenance and periodic maintenance.
- In workplaces where the above-mentioned parameters are random, it is recommended to use hoods with filter loading detection (HI HEPA).
- This device makes it possible to permanently know the efficiency of the filtering and to proceed to the replacement as soon as necessary.

**In ordinary cases of use, we recommend:**



- For routine filter maintenance, cleaning with compressed air at least once a week.
- Disassemble the filter element.
- Put it horizontally on wedges at the four corners.
- Blow with compressed air in the opposite direction of aspiration.
- For periodic maintenance, change the filter at least twice a year.

#### **Ref FCP1:**

- The use of activated carbons makes it possible to purify the air of impurities and in particular smelly substances.
- The frequency of replacement of activated carbon filters is based on the user's own experience.
- This must take into consideration the concentration rate and the nature of the troublesome substances.
- By default, it is recommended to change the charcoal filters every 6 to 12 months or more frequently in intensive use.

### **SPARE PARTS, CONSUMABLES**

Spare coins that the user must possess

- **1.25 Amp Quick Fuse Quantity: 2**
- **Filters: Depending on the model used Quantity: 1**
- **G45 4W E27 LED Bulb Quantity: 2**
- Replacement cord: If the power cable is damaged, it must be replaced by the manufacturer, its after-sales service or similarly qualified persons to avoid the danger.

### **GUARANTEE**

- All units are guaranteed for 1-year parts and labour provided that you have used the product under its purpose and the instructions in the user manual.
- For the implementation of this guarantee, you will have to attach a photocopy of the original invoice specifying the date of purchase.

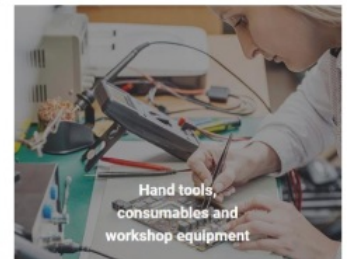
#### **Guaranty exclusions:**

- modification or alteration of the above document,
- type and/or serial number of the product rendered unidentifiable,
- interventions on the product made by any unauthorized person,
- damage caused by a cause external to the device and in particular by lightning, fire, water damage or negligence,
- modification or adaptation of the product.
- The guarantee does not cover the deterioration of accessories and spare parts of usual consumption.

### **Our Company**

- Our know-how has been with you for more than 100 years.
- We serve more than a thousand companies every year in all sectors and allow them to have work tools adapted to their activity.
- We offer standard solutions or design tailor-made projects adapted to the environments and issues of our customers.

#### Our area of expertise covers 4 main categories of products:



#### Our Offer



- **French made**
  - Our products are manufactured in our Nanterre workshops.
  - We also rely on a network of national suppliers and subcontractors.



- **Sustainable products**
  - Reliable products that we master the maintenance and repair for a reduced environmental footprint.



- **Customized solutions**
  - For a specific project, we propose an ad hoc solution.



- **Showroom**
  - Presentation of our products and realization of tests on samples.



- **Online quote**
  - Click on the products that interest you, we send you a quote in half a day.



- **Express delivery**
  - A large stock of more than 1000 references allows us to deliver under 48 hours for most of our products.




- **Secure payment**
  - Payment by Paypal, CB, Visa, MasterCard.



- **Technical service at your disposal**
  - Help with assembly, after-sales service, and remote diagnosis.
- [info@ftm-technologies.com](mailto:info@ftm-technologies.com)
- **+33(0)1 40 86 00 09**
- [www.ftm-technologies.com](http://www.ftm-technologies.com)

## Documents / Resources

	<a href="#">FTM Technologies HI1P Built in Hood [pdf] User Manual</a> HI1P Built in Hood, HI1P, Built in Hood, Hood
--	--

## References

- [technologies.com](http://technologies.com)
- [User Manual](#)

### Manuals+, Privacy Policy

This website is an independent publication and is neither affiliated with nor endorsed by any of the trademark owners. The "Bluetooth®" word mark and logos are registered trademarks owned by Bluetooth SIG, Inc. The "Wi-Fi®" word mark and logos are registered trademarks owned by the Wi-Fi Alliance. Any use of these marks on this website does not imply any affiliation with or endorsement.