



FS FLYSKY FS-I10 Transmitter and Receiver User Guide

[Home](#) » [FS FLYSKY](#) » FS FLYSKY FS-I10 Transmitter and Receiver User Guide 



Contents

- [1 FS-I10 Transmitter and Receiver](#)
- [2 Precautions!](#)
- [3 Transmitter Overview](#)
- [4 Screen Overview](#)
- [5 Basic Operations](#)
- [6 Model Setup](#)
- [7 Specifications](#)
- [8 Documents / Resources](#)
 - [8.1 References](#)
- [9 Related Posts](#)

FS-I10 Transmitter and Receiver



Copyright ©2013-2017 Flysky RC model technology co., td

Thank you for purchasing our product! To find out more about our products, visit our website at www.flysky-cn.com. If you encounter any problem during use, refer to the transmitter's on-board help files or instruction manual first. If the problem persists, contact your local dealer or visit our service and support website for help: www.flysky-cn.com/service.asp.

Precautions!

Read the safety messages listed below before operation!

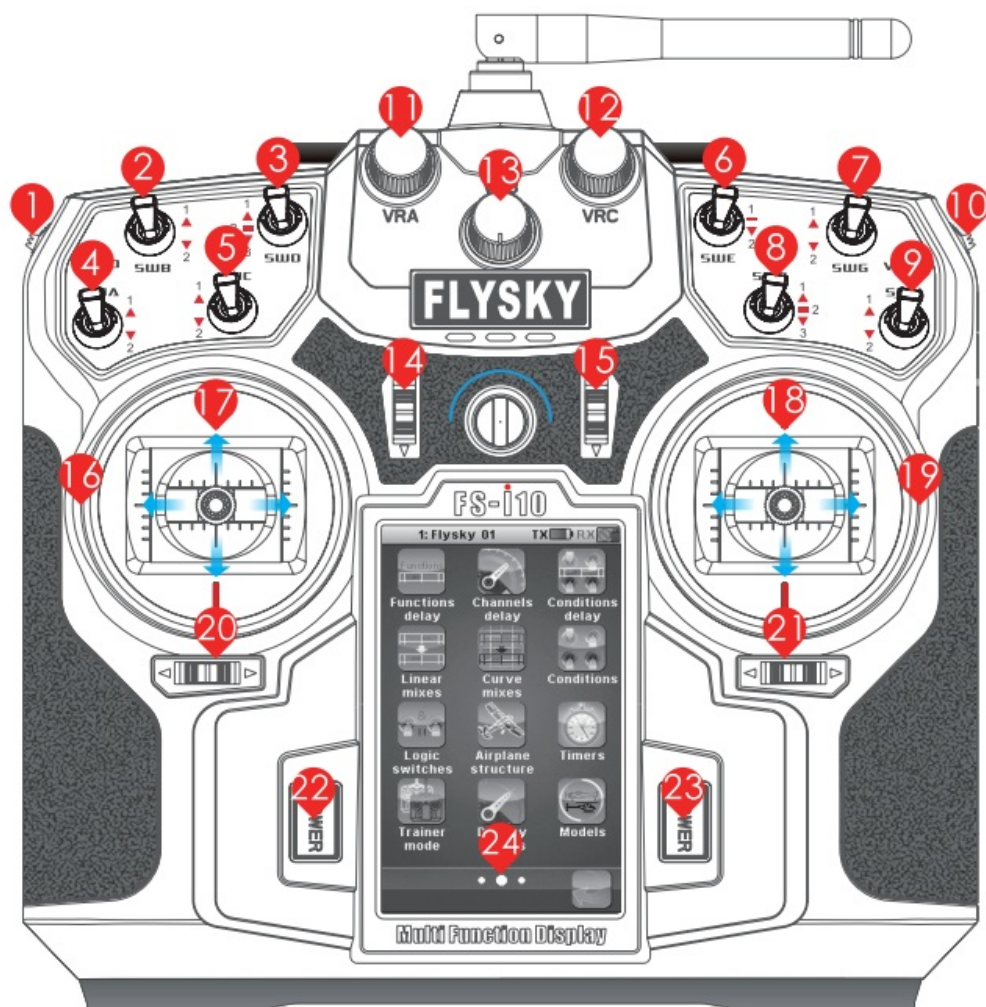
- Do not use the product at night or during bad weather conditions, like rain or thunderstorms. It can cause erratic operation or loss of control.
- Do not use the product when visibility is limited.
- Do not use the product on rain or snow. Any exposure to moisture (water or snow) may cause erratic operation or loss of control.
- Interference may cause loss of control. To ensure the safety of you and others, do not operate in the following places:

Near any site where other radio control activity may occur	Near people or roads	On any pond when passenger boats are present	Near power lines or communication broadcasting antennas

- Do not use this product when you are tired, uncomfortable, or under the influence of alcohol or drugs. Doing so may cause serious injury to yourself or others.
- The 2.4GHz radio band is limited to line of sight. Always keep your model in sight as a large object can block the RF signal and lead to loss of control.
- Never grip the transmitter antenna during operation. It significantly degrades signal quality and strength and may cause loss of control.
- Do not touch any part of the model that may generate heat during operation, or immediately after use. The engine, motor or speed control, may be very hot and can cause serious burns.
- Misuse of this product may lead to serious injury or death. To ensure the safety of you and your equipment, read this manual and follow the instructions.
- Make sure the product is properly installed in your model. Failure to do so may result in serious injury.
- Make sure to disconnect the receiver battery before turning off the transmitter. Failure to do so may lead to unintended operation and cause an accident.
- Ensure that all motors operate in the correct direction. If not, adjust the direction first.
- Make sure the model flies within a certain distance. Otherwise, it would cause loss of control.
- Only use specified battery.
- Do not open, disassemble, or attempt to repair the battery.
- Do not crush/puncture the battery, or short the external contacts.
- Do not expose to excessive heat or liquids.
- Do not drop the battery or expose to strong shocks or vibrations.
- Always store the battery in a cool, dry place.
- Do not use the battery if damaged.

Transmitter Overview

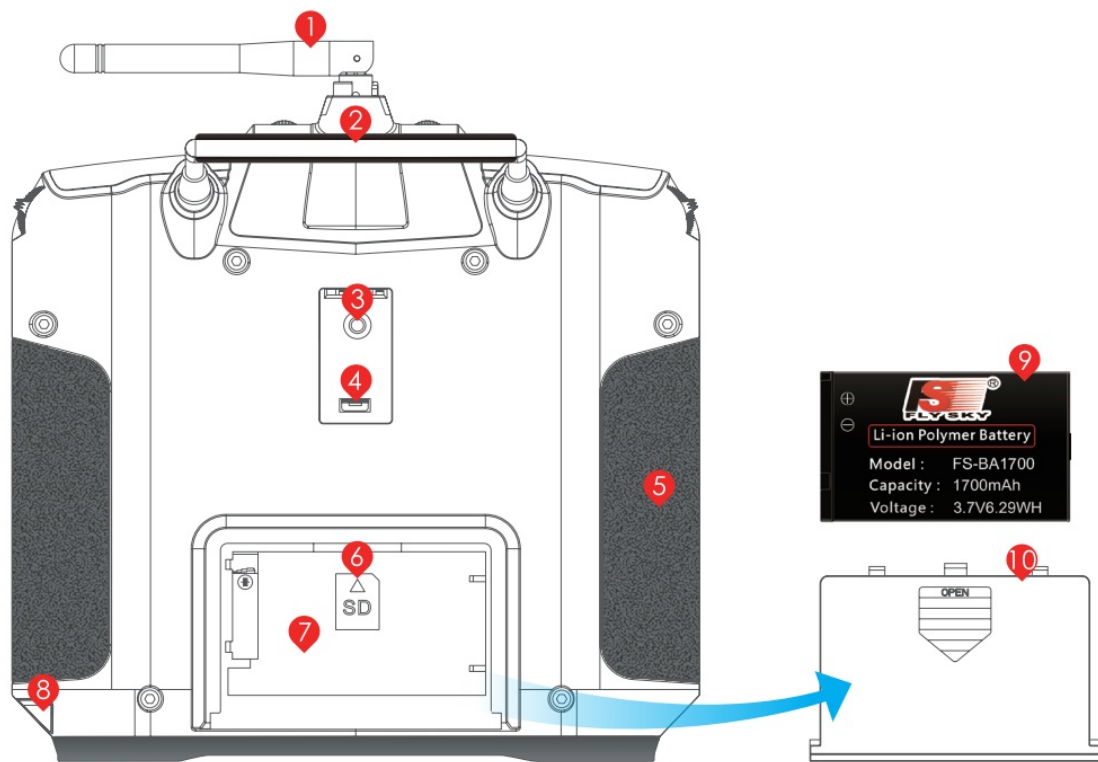
► Front View



1. VRD Knob	7. SWG Switch	13. VRB Knob	19. Aileron
2. SWB Switch	8. SWF Switch	14. Throttle Trim	20. Rudder Trim
3. SWD Switch	9. SWH Switch	15. Elevator Trim	21. Aileron Trim
4. SWA Switch	10. VRE Knob	16. Rudder	22. Power Button
5. SWC Switch	11. VRA Knob	17. Throttle	23. Power Button
6. SWE Switch	12. VRC Knob	18. Elevator	24. LCD

⚠ The function of the sticks on your transmitter might be different from those shown above. For details about how to change the stick mode, refer to the instruction manual.

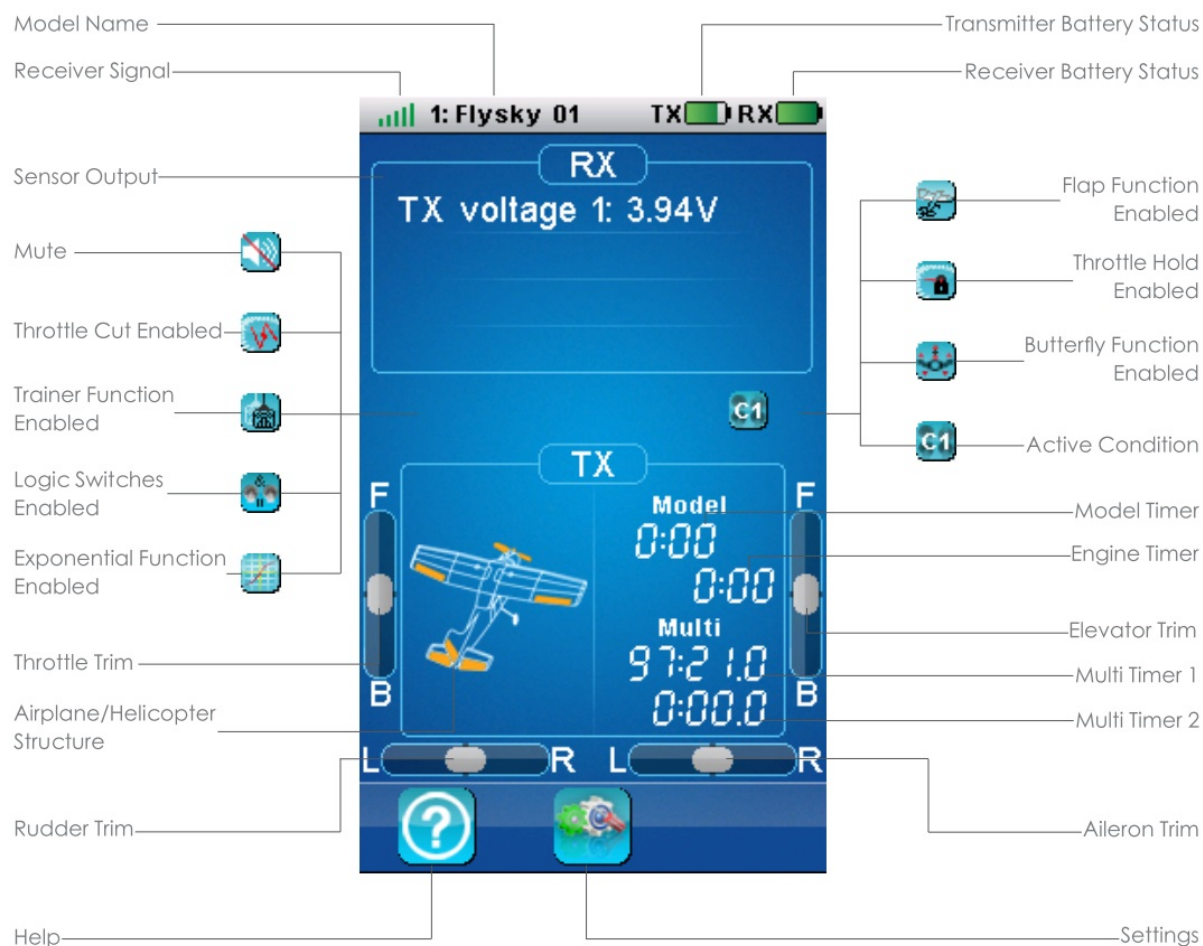
► Rear View



1. Antenna
2. Handle
3. Trainer Port
4. USB Port
5. Grip

6. SD Card Slot
7. Battery Compartment
8. Stylus
9. Battery
10. Battery Compartment cover

Screen Overview



These are located on the bar at the bottom of the LCD.



Back button: Use this icon to return to a previous menu or exit a function.



Default button: This icon resets the current page to its default parameters.



Assign Switch: Some functions require, or are assignable to a hardware switch (SWA ~ SWH) or knob (VRA ~ VRE).



Enable/Disable: These icons enable and disable the current function. When the tick icon is visible the function is active.

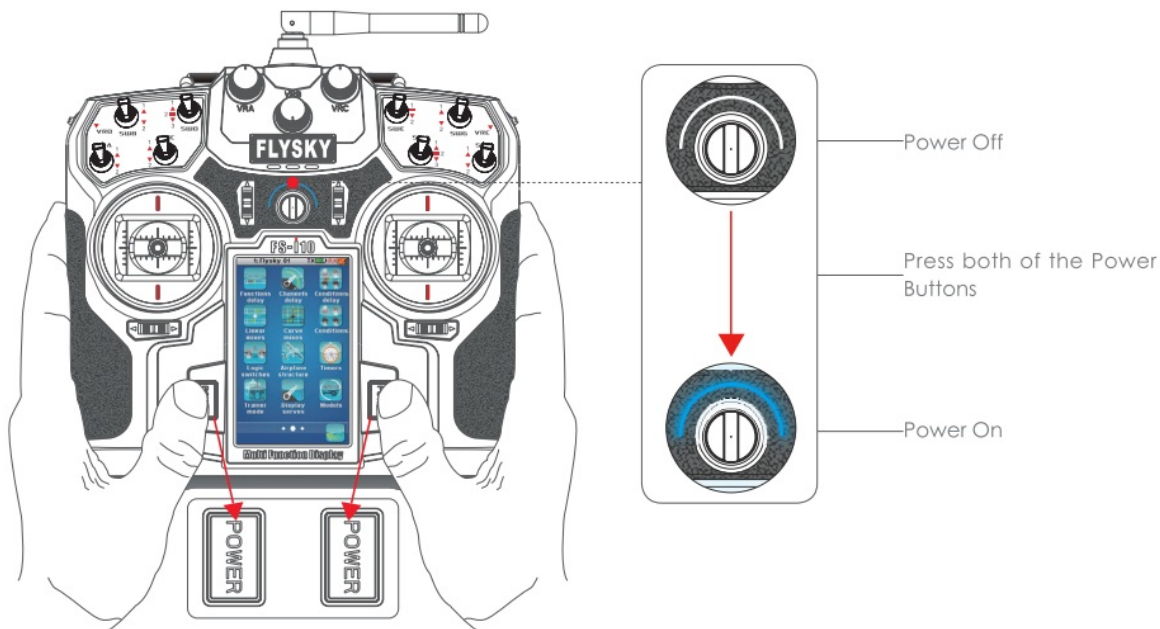
Basic Operations

► Install the Battery

1. Remove the battery compartment cover.
2. Insert the battery making sure the contacts on the battery, and in the system are properly aligned.
3. Replace the battery compartment cover.

► Power On

1. Make sure that all switches are at their highest position and the throttle is at its lowest position.
2. Hold down the two power buttons on each side of the screen until the status indicator lights UP.
3. Connect the receiver power supply.



! If the switches and throttle are not in their correct positions, the system will display a warning message.

► Bind with Receiver

The transmitter and receiver have been pre-bound before delivery. If you are using another transmitter or receiver, follow the steps below to bind the transmitter and receiver:

1. Turn the transmitter on, press [Setup] , swipe from right to left on the screen and then select [RX Setup].

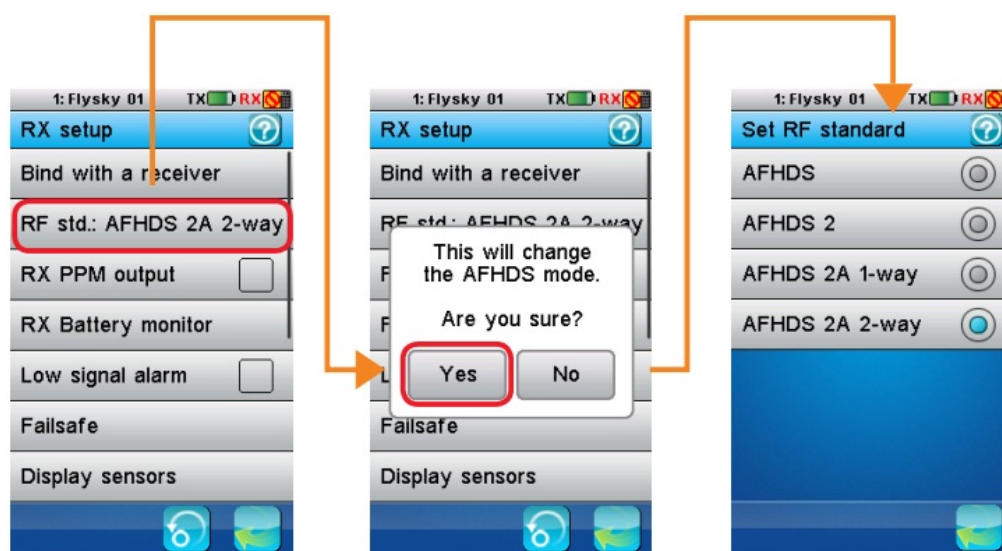


2. Check the current [RF std] and receiver type according to the table below. If you need to change the standard,

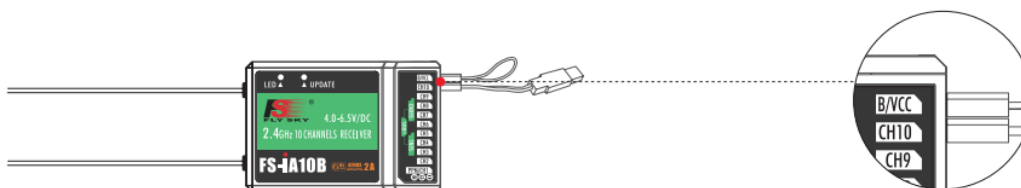
select [RF std], and [Yes] in the confirmation box, and then the desired standard. Then select [Back] to return to the [RX setup] menu.

RF Standard	Receiver Type
AFHDS	GR3F, GR3E, R6B, R9B
AFHDS 2	iR4, iR4B, iR6B
AFHDS 2A 1-way	A3, A6
AFHDS 2A 2-way	iA4B, 1A6, iA6B, iA10, iAIOB

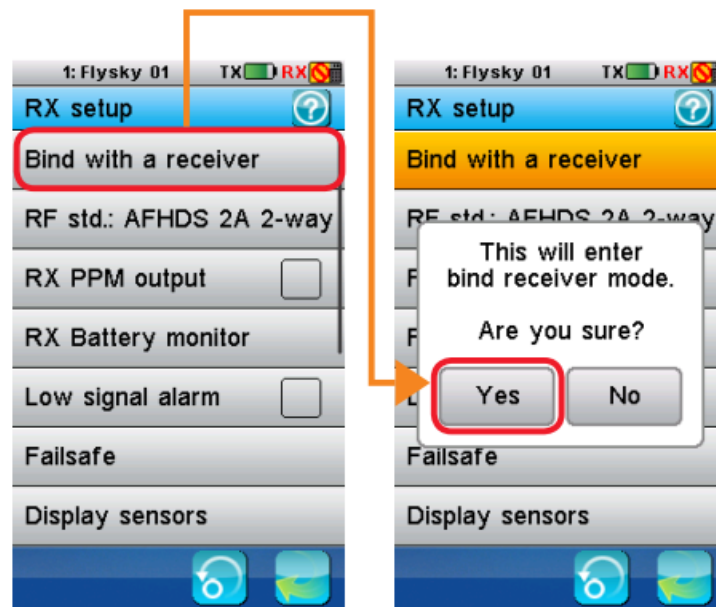
Note: The information contained in the table is subject to change. Please check the RF standard on your receiver's label.



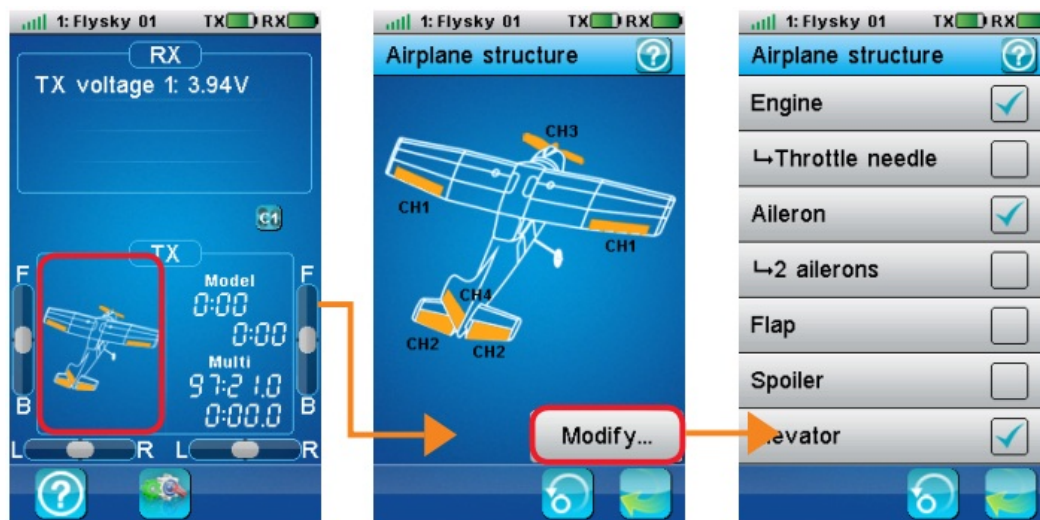
3. Connect the bind cable to the B/VCC port on the receiver.



4. Connect the power to any other port with the correct polarity. The indicator will start to flash quickly, indicating that the receiver is in bind mode.
5. Select [Bind with a receiver] on the transmitter, and press [Yes] to enter bind mode.
 - For [AFHDS 2A 2-way], when binding is complete, the transmitter will exit the bind menu automatically.
 - For other standards, when binding is complete, the indicator on the receiver starts to flash slowly or light up. Select [Back] to exit the bind menu.
6. Remove the bind cable from the receiver and disconnect the power cable. Then connect the power cable to the B/VCC port with the correct polarity.
7. Check if all the servos work as expected. If anything does not work as expected, restart this procedure from the beginning.



Model Setup



► If you are flying an airplane or glider:

1. Touch the plane picture on the main screen and then select [Modify...] in the [Airplane structure] screen.
2. Select the control surfaces that your model has.
3. Select [Back] to exit the menu.



► If you are flying a helicopter:

1. Select [Setup] , swip left to right on the screen and then select [Models].
2. Select [Set model type], and then [Helicopter]. Select [Yes] to confirm. Then the [Helicopter structure] screen displays.
3. Select the configurations that your model has and then select [Back] to exit the menu.

Digital Proportional Radio Control System **FS-i10** Power Off

1. Disconnect the receiver from power. The system will not power off if the receiver is still connected.
2. Hold down the power buttons on each side of the screen.

⚠ Make sure to disconnect the receiver's power before turning off the transmitter. If the receiver is still on, the system will prompt "For your safety, please turn off the receiver first.". If you turn off the transmitter forcefully, it may lead to unintended operation and cause an accident.

Specifications

Channels	10
Model Type	Fixed-Wing/Glider/Helicopter
RF Range	2.4055-2.475GHz
RF Power	<20 dBm
RF Channel	140
Bandwidth	500KHz
2.4GHz System	AFHDS 2A/AFHDS 2/AFHDS
Modulation Type	GFSK
Stick Resolution	4096
Low Voltage Warning	<3.7V
DSC Port	Micro-USB PPM
Chargeable	Yes (USB)
Antenna Length	26mm(Dual Antenna)
Weight	720g
Power	3.7V
Display	WQGA 3.55inch Touch Resistive TFT Color Screen , 262K 240* Pixels
Size	190*95*255mm
On-Line Update	Yes
Color	Silver
Certificate	CE0678, FCC ID:N4ZFLYSKY110



Digital Proportional Radio Control System

C€06/78 FCC ID:N4ZFLYSKYI10

<http://www.flysky-cn.com>

Copyright © 2013-2017 Flysky RC model technology co., ltd

Edition: V2.0

Release date: 2016-03-10



[FS FLYSKY FS-I10 Transmitter and Receiver](#) [pdf] User Guide
FS-I10 Transmitter and Receiver, FS-I10, Transmitter and Receiver, and Receiver, Receiver

References

-  [Manual-Hub.com - Free PDF manuals!](#)
- [User Manual](#)

Manuals+. Privacy Policy

This website is an independent publication and is neither affiliated with nor endorsed by any of the trademark owners. The "Bluetooth®" word mark and logos are registered trademarks owned by Bluetooth SIG, Inc. The "Wi-Fi®" word mark and logos are registered trademarks owned by the Wi-Fi Alliance. Any use of these marks on this website does not imply any affiliation with or endorsement.