




FS COM S5850-48T4Q 48-Port Ethernet L3 Switch User Manual

[Home](#) » [FS COM](#) » FS COM S5850-48T4Q 48-Port Ethernet L3 Switch User Manual 

Contents

- [1 FS COM S5850-48T4Q 48-Port Ethernet L3 Switch](#)
- [2 Introduction](#)
- [3 Topology](#)
- [4 Configuration Steps](#)
- [5 Documents / Resources](#)
 - [5.1 References](#)
- [6 Related Posts](#)



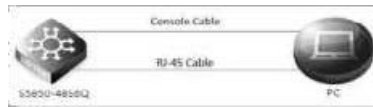
FS COM S5850-48T4Q 48-Port Ethernet L3 Switch



Introduction

This document explains in detail how to turn on the relevant content of the Web, and it is only available for Web management with version numbers V7.4.3.r3 and below.

Topology



Configuration Steps

1. Connection equipment

According to the way of networking topo to connect PC and S5850-48S6Q switch to network. One end of the RJ-45 cable is connected to the PC's network port, and the other end is connected to the Manage interface of S5850-48S6Q. At the same time, one end of console line USB is connected to PC's USB interface, and the other end of RJ-45 connector is connected to console interface of front panel of switch.

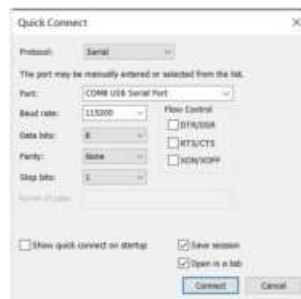
2. Download related software

Search and install SecureCRT debugging software and Tftpd32 file transfer software through Google.

3. Configure software parameters

Energizing the switch. Then right-click "my computer" on PC, click management, and view the com port corresponding to console

cable from device manager. (If it display an unrecognized USB device, please download and install the corresponding driver). Then open SecureCRT, select the serial login mode, and select the serial number from the device manager. Baud rate is 115200, no flow control is selected. As the picture shows.



4. Login switch

After a successful connection, tapping the Enter key on the keyboard will jump out of the prompt to enter the account password. At this point, enter the default user name and password admin/admin, you can log in to the switch. Then use `cd flash:/?` command to see if a WebImage file exists in the system directory of the switch. As the picture shows, if this file exists, skip to Step 7.

flash:/log	Directory
flash:/startup-config.conf	File
flash:/boot	Directory
flash:/cold	Directory
flash:/conf	Directory
flash:/info	Directory
flash:/syslogfile	Directory
flash:/dhcpc Snooping	File
flash:/ldp3.pcap	File
flash:/factory-config.bin	File
flash:/mirror	Directory
flash:/sys-diag	Directory
flash:/reboot-info	Directory
flash:/startup-config.config.backup	File
flash:/O102-config	File
flash:/syslog	File
flash:/ldp.pcap	File
flash:/001E080D0F65.4.lic	File
flash:/monitor	Directory

5. Configure Tftpd32 software

Open Tftpd32 software and set Server interfaces as the local IP address of the computer. Current Directory fills in the file path where the upgrade package is located. As the picture shows.



6. Download Weblmage

Through Tftpd32 software,download Weblmage to the root directory of the switch, flash:/.

S5850-48S6Q# copy mgmt-if tftp://192.168.148.1/ FSOS-weblmage-v7.4.3.bin flash:/

Note: The weblmage version downloaded for S3950-4T12S and S5800-8TF12S is v5.3.11. S3950-4T12S#
copy mgmt-if tftp://192.168.148.1/ FSOS-weblmage-v5.3.12.bin flash:/

7. Configuration switch management IP

Configuration management IP for Management interface of switch under CLI interface

S5850-48S6Q# configure terminal

S5850-48S6Q(config)# management ip address 192. 168.100.6/24 S5850-48S6Q(config)# management route
add gateway 192.168.100.1 S5850-48S6Q(config)#exit

8. Enable Http services

S5850-48S6Q# configure terminal

S5850-48S6Q(config)# http server load flash:/FSOS-weblmage-v7.4.3.bin S5850-48S6Q(config)# service http
enable

Note: The weblmage version downloaded for S3950-4T12S and S5800-8TF12S is v5.3.12.

S3950-4T12S# configure terminal

S3950-4T12S(config)# http server load flash:/FSOS-weblmage-v5.3.12.bin SS3950-4T12S(config)# service
http enable




9. Enter Web interface

Enter the Administrator IP address:192.168.100.6 in the URL bar of Google Browser,then enter the default username and password admin/admin.As the picture shows.

NOTE: Recommended use of the latest version of WebImage files.

Documents / Resources

	<p>FS COM S5850-48T4Q 48-Port Ethernet L3 Switch [pdf] User Manual S5850-48T4Q, 48-Port Ethernet L3 Switch, Ethernet L3 Switch, 48-Port L3 Switch, L3 Switch, S witch</p>
---	---

References

- [AS Domain Registry](#)
- [FS.com - Data Center, Enterprise, Telecom](#)
- [FS.com - Data Center, Enterprise, Telecom](#)

Manuals+.