

**FRONT
RUNNER**
FRONT RUNNER
KRSJ007 Load Bar Kit



FRONT RUNNER KRSJ007 Load Bar Kit Instruction Manual

[Home](#) » [Front Runner](#) » FRONT RUNNER KRSJ007 Load Bar Kit Instruction Manual 

Contents

- [1 FRONT RUNNER KRSJ007 Load Bar Kit](#)
- [2 Product Usage Instructions](#)
- [3 GET ORGANIZED](#)
- [4 FIT AND SECURE](#)
- [5 Documents / Resources](#)
 - [5.1 References](#)
- [6 Related Posts](#)

FRONT RUNNER

FRONT RUNNER KRSJ007 Load Bar Kit



Specifications

- Product: Front Runner Load Bar Kit

- Vehicle Compatibility: Suzuki Jimny (2018-current)
- Model Number: KRSJ007

Product Usage Instructions

Getting Organized

In the Box:

- 1 x Load Bar 1345mm (L)
- 4 x Load Bar Leg
- 2 x Pinch Weld (Pack of 6)
- 1 x Wind Deflector 10mm

Tools Needed:

- 3mm, 5mm, 13mm wrench/socket

Fit and Secure

1. Flip the Load Bar so that the bottom of the Wind Deflector faces up.
2. Insert 2 x M8x25 Hex Bolts into each side of the machined slots in the slats.

Loosely mount the 2 x legs to the slats using M8 Schnorr Washers and M8 Nyloc Nuts. Assemble the Legs with the Pinch Weld.

Fit and Secure

1. Place your Load Bars on the vehicle, positioning all the Legs on the gutters.
2. Position the Bars 1100mm apart and centralize them on the roof.

Tightening Torque:

- M6: 8-10Nm / 5.9 ft lb – 7.38 ft lb
- M8: 15-20Nm / 11.06 ft lb – 14.75 ft lb

Center the rack and tighten all fasteners. Use M8 Nut Caps over the M8 Nyloc Nuts.

Install Other Vehicle and Rack Accessories

Visit your Front Runner Dealer for additional accessories.

FAQ

1. **Q: What should I do if I have questions about the installation process?**

A: Contact Front Runner for assistance before proceeding with the installation to avoid any warranty issues.

2. **Q: Can I exceed the load capacity recommended by my vehicle manufacturer?**

A: It is not recommended to exceed the load capacity stated by your vehicle manufacturer as it may lead to safety hazards.

START HERE!

READ ME FIRST

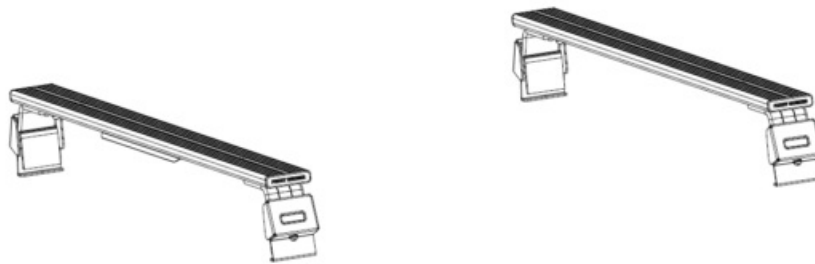
Don't be a hero and muscle through this installation without reading these fitting instructions first! Improper installation of this gear may void certain aspects of your warranty. Before you begin, take a moment and open all your Front Runner rack kit boxes and gather the assembly instructions for the various components.

A complete kit will contain:

1. A Front Runner Mounting System specific to your vehicle
2. A Front Runner Rack Tray or Load Bar Slats

This document will guide you through the assembly of the mounting system and assist you in fitting the roof rack tray or load bars to your specific vehicle.

Please refer to the next page for a list of all the components, quantities and tools required.



IMPORTANT WARNING!!

IT IS CRITICAL THAT ALL FRONT RUNNER PRODUCTS BE PROPERLY AND SECURELY ASSEMBLED AND ATTACHED TO YOUR VEHICLE. IMPROPER ATTACHMENT COULD RESULT IN AN AUTOMOBILE ACCIDENT, AND COULD CAUSE SERIOUS BODILY INJURY OR DEATH. YOU ARE RESPONSIBLE FOR ASSEMBLING AND SECURING ALL FRONT RUNNER PRODUCTS TO YOUR VEHICLE, CHECKING THE ATTACHMENTS PRIOR TO USE, AND PERIODICALLY INSPECTING THE PRODUCTS FOR ADJUSTMENT, WEAR AND DAMAGE. THEREFORE, YOU MUST READ AND UNDERSTAND ALL OF THE INSTRUCTIONS AND PRECAUTIONS SUPPLIED WITH YOUR FRONT RUNNER PRODUCT PRIOR TO INSTALLATION OR USE. IF YOU DO NOT UNDERSTAND ALL OF THE INSTRUCTIONS AND CAUTIONS, OR IF YOU HAVE NO MECHANICAL EXPERIENCE AND ARE NOT THOROUGHLY FAMILIAR WITH THE INSTALLATION PROCEDURES, YOU SHOULD HAVE THE PRODUCT INSTALLED BY A PROFESSIONAL INSTALLER OR OTHER QUALIFIED PERSONNEL.

NOTE: Front Runner will not be responsible for any damage caused by the failure to install the product according to these instructions. Please call us if you have any questions about the installation of this product.

CHECK ONLINE FOR LATEST FITMENT GUIDE

GET ORGANIZED

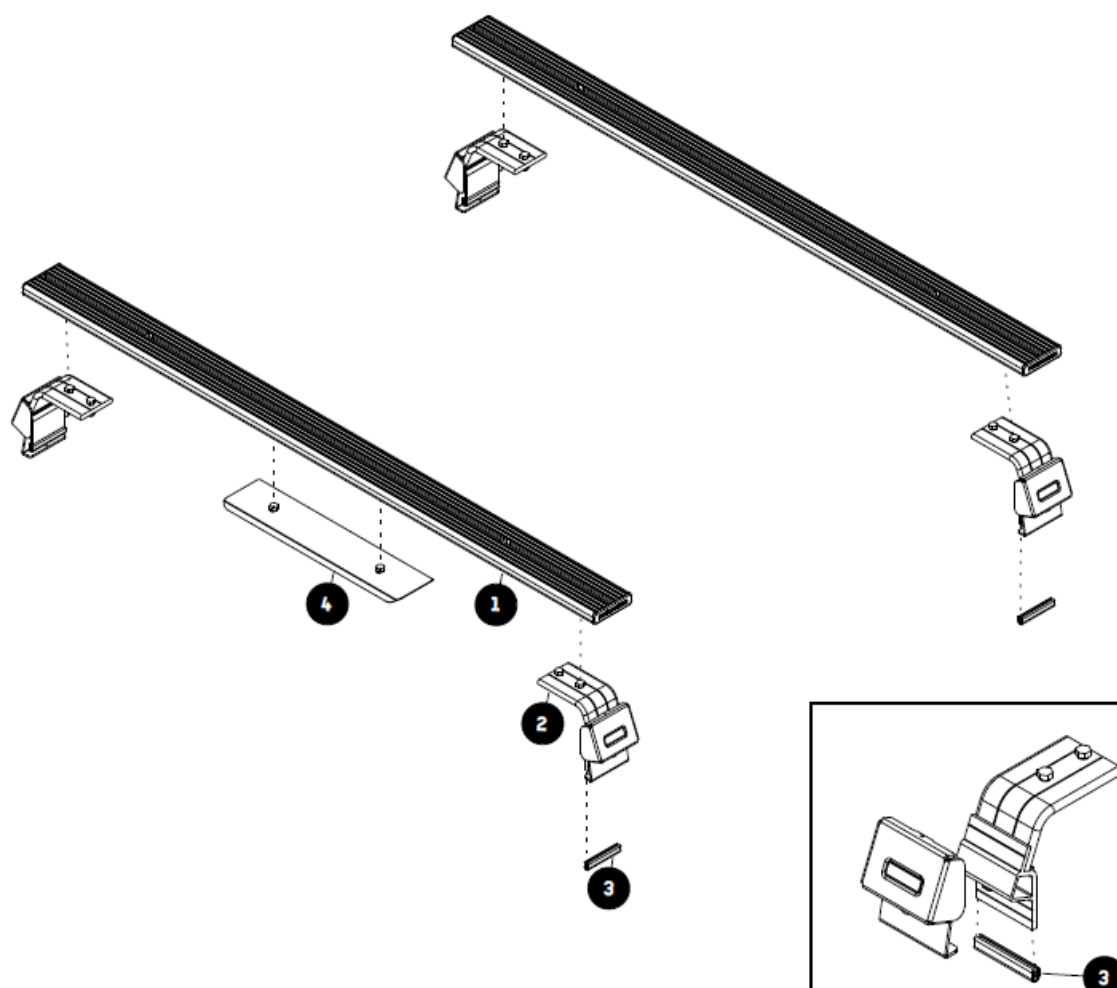
IN THE BOX

1	1 X	Load Bar 1345mm (L)
2	4 X	Load Bar Leg
3	2 X	Pinch Weld (Pack of 6)
4	1 X	Wind Deflector 10mm

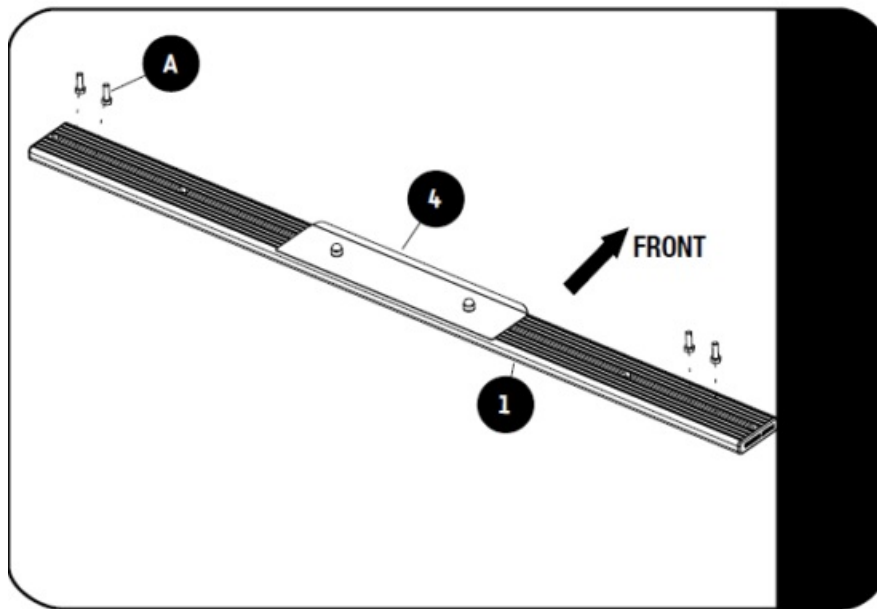
TOOLS NEEDED



FIGURE 1.1

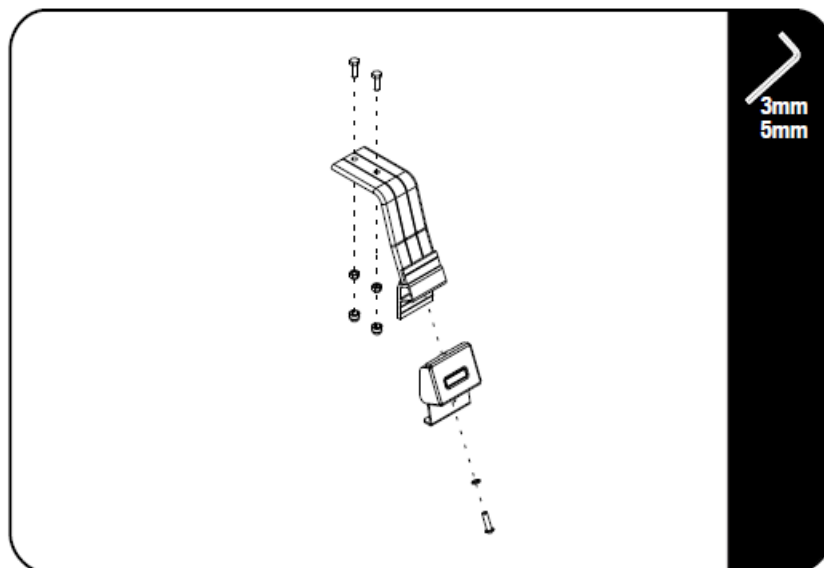


FIT AND SECURE

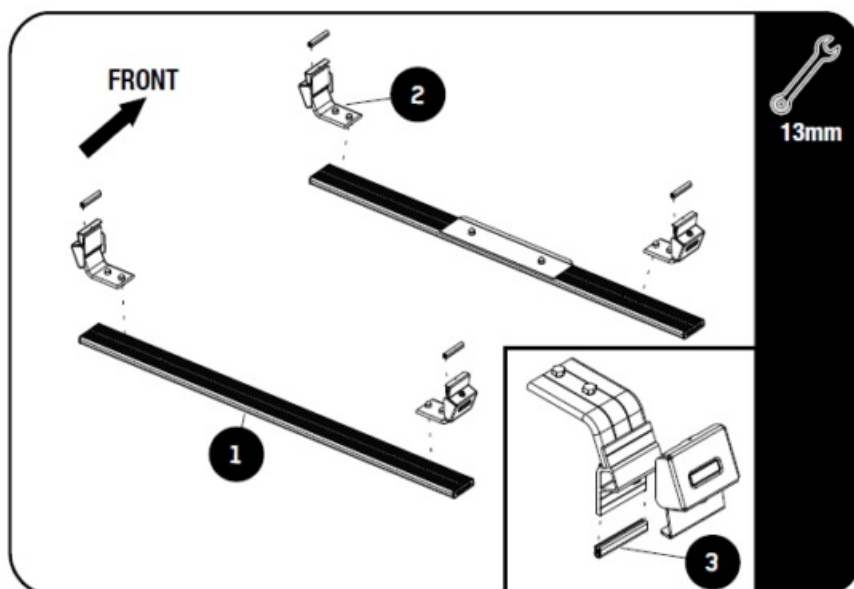



Refer to WDLB001 Fitment Guide before continuing to 2.1.

↻ Flip the Load Bar so that the bottom of the Wind Deflector faces up. Place the remaining Load Bar next to it. A Insert 2 x M8x25 Hex Bolts into each side of the the machined slots in the slats as shown. Do this for both Load Bars.

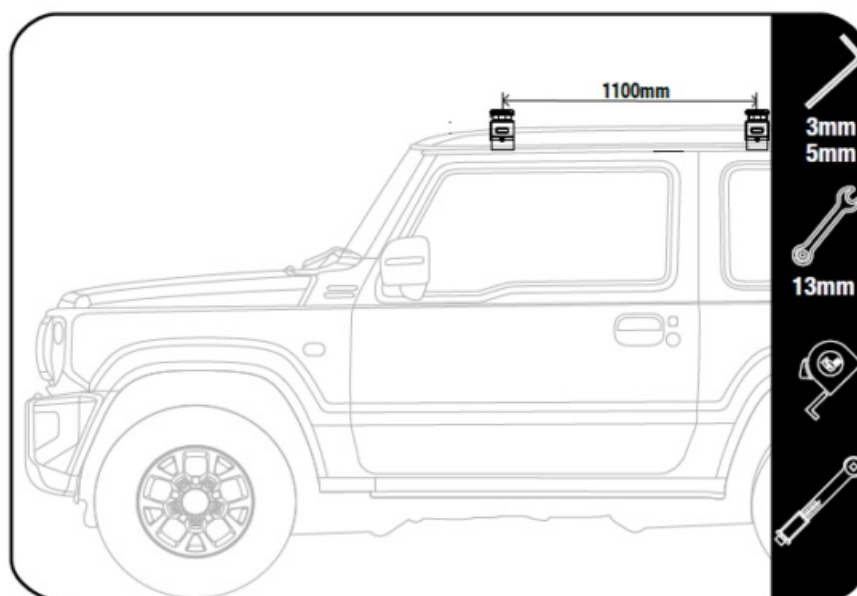



↻ Refer to LASSUNI fitment guide.



 Loosely mount the 2 x legs (Item 2) to the slats indicated using M8 Schnorr Washers and M8 Nyloc Nuts included in the Leg sets.
Assemble the Legs, as shown, with the Pinch Weld (Item 3).

FIT AND SECURE



 Place your Load Bars on the vehicle positioning all the Legs so that they rest on the gutters.
Position the Bars 1100mm from the centre of the first bar to the centre of the second bar and centralize on the roof.

Tightening Torque:

M6 : 8-10Nm / 5.9 ft lb – 7.38 ft-lb

Tightening Torque:

M8 : 15-20Nm / 11.06 ft lb – 14.75 ft-lb

Make sure there are no movement on the bars after fully tightening all the fasteners.



Center the rack and tighten fully. Finish off by placing M8 Nut Caps over the M8 Nyloc Nuts.

INSTALL OTHER VEHICLE AND RACK ACCESSORIES

Now's the time to visit your favorite Front Runner Dealer in person or online.



IMPORTANT!

FRONT RUNNER RACK KITS OFTEN HAVE A HIGHER LOAD RATING THAN THE VEHICLES THEY ARE MOUNTED TO. PLEASE REFER TO YOUR SPECIFIC VEHICLE MANUFACTURER FOR A RECOMMENDED ROOF RATING. FRONT RUNNER CANNOT BE RESPONSIBLE FOR IMPROPER LOADING BEYOND THE VEHICLE MANUFACTURER'S STATED LOAD CAPACITY.

Be sure to tag us. We love to see our gear in action! #FrontRunnerOutfitters #BornToRoam

Share your adventures on:



© 2024 FRONT RUNNER VEHICLE OUTFITTERS

Documents / Resources

	<p>FRONT RUNNER KRSJ007 Load Bar Kit [pdf] Instruction Manual KRSJ007, KRSJ007 Load Bar Kit, Load Bar Kit, Bar Kit, Kit</p>
--	---

References

-  [FRONTRUNNEROUTFITTERS.COM](https://www.frontrunneroutfitters.com)
- [User Manual](#)

[Manuals+](#), [Privacy Policy](#)

This website is an independent publication and is neither affiliated with nor endorsed by any of the trademark owners. The "Bluetooth®" word mark and logos are registered trademarks owned by Bluetooth SIG, Inc. The "Wi-Fi®" word mark and logos are registered trademarks owned by the Wi-Fi Alliance. Any use of these marks on this website does not imply any affiliation with or endorsement.