

FRONT RUNNER FAJL010 Front Bar Support Clamp Instruction Manual

Contents

- [1 FRONT RUNNER FAJL010 Front Bar Support Clamp](#)
- [2 Specifications](#)
- [3 GET ORGANIZED](#)
- [4 FIT AND SECURE](#)
- [5 FAQs](#)
- [6 Documents / Resources](#)
 - [6.1 References](#)
- [7 Related Posts](#)

FRONT RUNNER

FRONT RUNNER FAJL010 Front Bar Support Clamp

Specifications

- **Product Name:** Front Runner Jeep Wrangler JL/JT (2018-Current) Front Bar Support Clamp
- **Model:** FAJL010

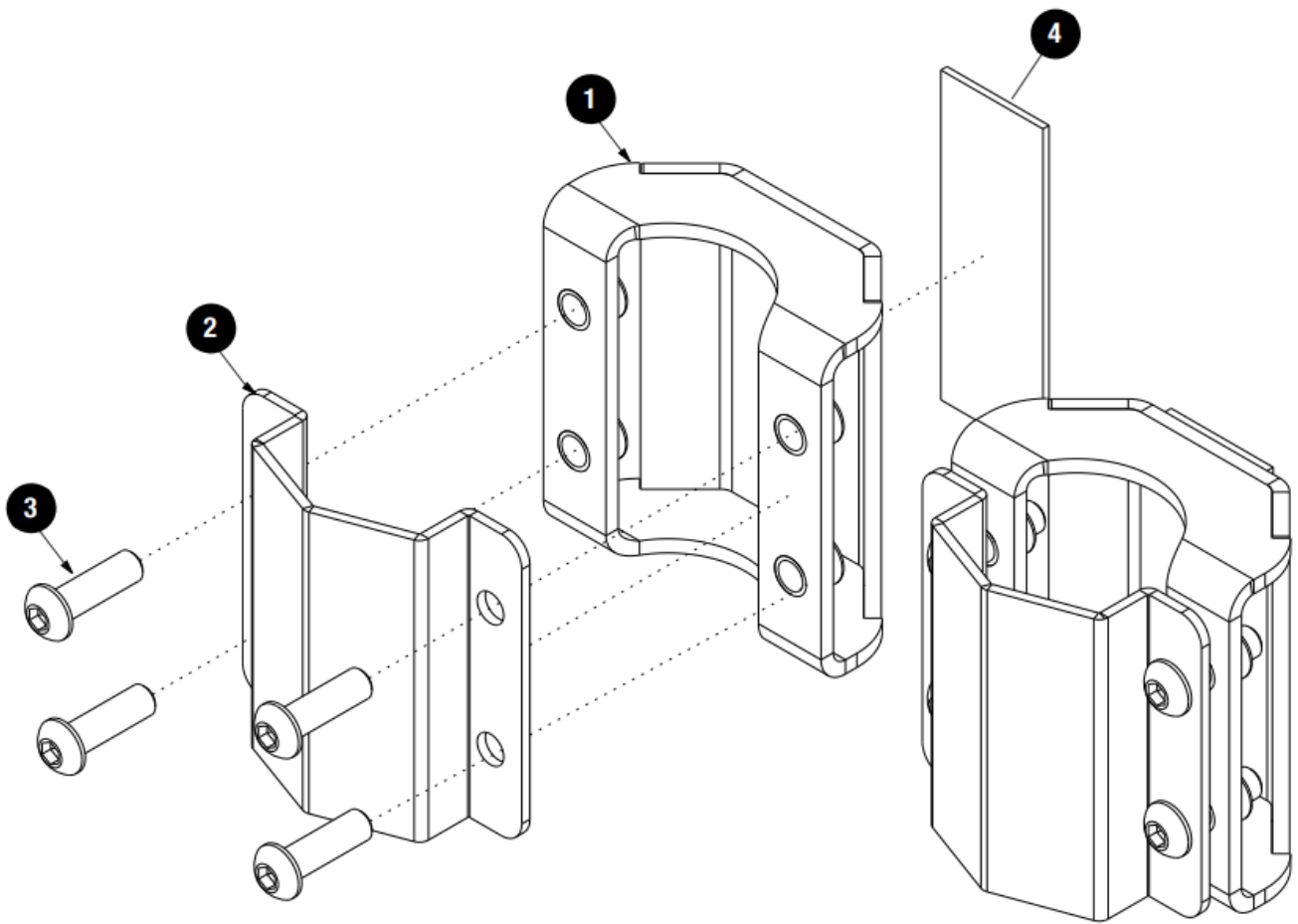
GET ORGANIZED

IN THE BOX

- 2 X Back Bracket
- 2 X Front Bracket
- 8 X M6 x 20 Button Head Screw
- 2 X VHB tape 70mm

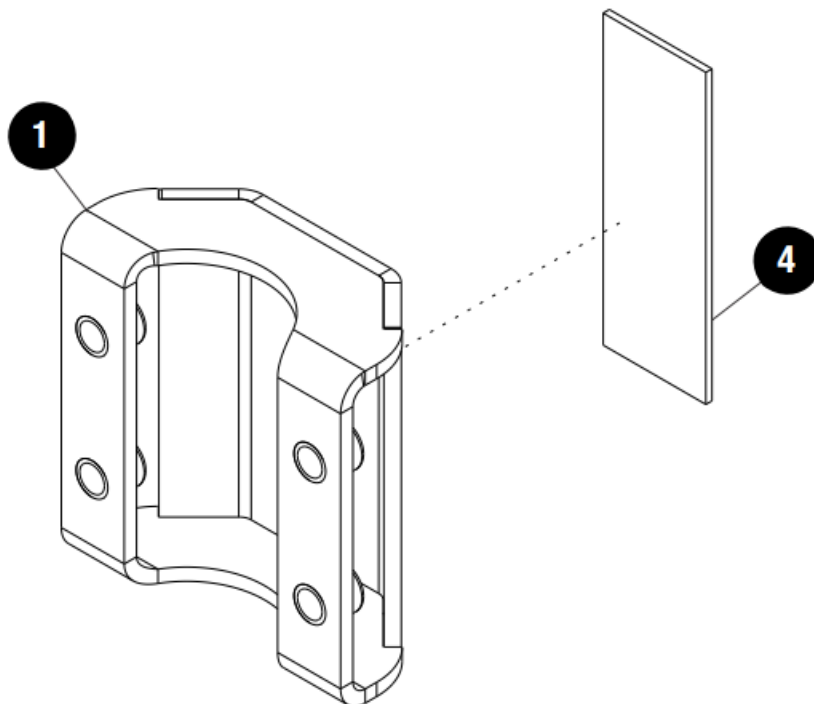
TOOLS NEEDED





FIT AND SECURE

1. Clean the rear of the Back Bracket (Item1) with Denatured alcohol and adhere the VHB tape (Item 4) to the back of the Mounting bracket. **DO NOT REMOVE THE BACKING AT THIS POINT**



NOTE: Use a heat gun to heat the surface and VHB tape a little before applying. This will help to create a strong bond, especially in colder climates.

2. Loosen the nut securing the Pillar Bracket to the underside of the Rack before continuing to the next step. Measure 300mm from the underside of the rack to the top of the Back bracket, mark position with a piece of

tape.



3. Using M6x20 Button Head Screws (Item3) loosely tighten the Front Bracket to the Back Bracket. Position and rotate the racket assembly to align with the A pillar. Remove the VHB backing and push the A pillar bracket inward towards the vehicle's A pillar to adhere. Check the Door clearance by opening and adjusting the pillar accordingly. While holding in place, fully tighten the Nut securing the A Pillar bracket to the underside of the rack. Fully tighten all fasteners. Repeat Steps 2.1 to 2.3 on the opposite side. A Pillar bracket



Tightening Torque: M6 :8- 10Nmm / 5.9 ft lb – 7.38 ft .lb

COMPLETION

Congratulations! You did it. Take a step back and admire your work!

INSTALL OTHER VEHICLE AND RACK ACCESSORIES

Now's the time to visit your favorite Front Runner dealer in person or online.

IMPORTANT! FRONT RUNNER RACK KITS OFTEN HAVE A HIGHER LOAD RATING THAN THE VEHICLES THEY ARE MOUNTED TO. PLEASE REFER TO YOUR SPECIFIC VEHICLE MANUFACTURER FOR A RECOMMENDED ROOF RATING. FRONT RUNNER CANNOT BE RESPONSIBLE FOR IMPROPER LOADING BEYOND THE VEHICLE MANUFACTURER'S STATED LOAD CAPACITY.

FAQs

Q: Can I install this Front Bar Support Clamp on other vehicle models?

A: This Front Bar Support Clamp is specifically designed for Jeep Wrangler JL/J2018- Currentent) models. Installing it on other vehicles may not provide proper fitment or support.

Q: What should I do if I encounter issues during installation?

A: If you have any questions or encounter difficulties during installation, please contact Front Runner for assistance to ensure proper installation and product functionality.

Documents / Resources

	<p>FRONT RUNNER FAJL010 Front Bar Support Clamp [pdf] Instruction Manual FAJL010 Front Bar Support Clamp, FAJL010, Front Bar Support Clamp, Bar Support Clamp, Support Clamp</p>
--	--

References

-  FRONTRUNNEROUTFITTERS.COM
- [User Manual](#)

[Manuals+](#), [Privacy Policy](#)

This website is an independent publication and is neither affiliated with nor endorsed by any of the trademark owners. The "Bluetooth®" word mark and logos are registered trademarks owned by Bluetooth SIG, Inc. The "Wi-Fi®" word mark and logos are registered trademarks owned by the Wi-Fi Alliance. Any use of these marks on this website does not imply any affiliation with or endorsement.