



Fronius Verto 3 Phase String Inverter User Guide

[Home](#) » [Fronius](#) » Fronius Verto 3 Phase String Inverter User Guide 

Contents

- [1 Fronius Verto 3 Phase String Inverter](#)
- [2 Product Usage Instructions](#)
- [3 Tools](#)
- [4 To note during installation](#)
- [5 Mounting conditions](#)
- [6 DIMENSION](#)
- [7 Mounting](#)
- [8 Documents / Resources](#)
 - [8.1 References](#)
- [9 Related Posts](#)



Fronius Verto 3 Phase String Inverter



Specifications

- Model: Fronius Verto
- Available Versions: 15.0 / 18.0, 208-240, 25.0 / 27.0, 30.0 / 33.3, 36.0, 480
- Dimensions: 838.4 x 573.8 x 277.5 mm
- Max. Short-Circuit Current (ISC max): 120 A
- Total PV1 / PV2 / PV3 / PV4 Per Strand: 40 A each
- Max. Short-Circuit Current (ISC PV): 150 A
- Total PV1 / PV2 / PV3 / PV4 Per Strand: 50 A each

Product Usage Instructions

Installation

1. Ensure mounting conditions are met according to the provided guidelines.
2. Use appropriate tools for installation.
3. Connect only one conductor to each pin unless using twin wire-end ferrules.
4. Follow the specified torque values for tightening connections.

Data Communication Setup

1. If required, set up data communication as per the optional instructions provided.

Commissioning

1. Follow the commissioning steps outlined in the manual.

Control Panel Operation

1. Interpret the status indications on the control panel based on the provided guide.
2. Utilize WLAN access points and WPS for specific functions as needed.

Setup with Mobile Phone

1. Access the FRONIUS SOLAR.START application for quick system setup.
2. Follow the on-screen instructions for configuration using a mobile phone.

FAQ

- **Where can I find detailed warranty terms?**

Detailed, country-specific warranty terms are available on Fronius' official website at www.fronius.com/solar/warranty.

- **What are the general warning signs for this product?**

The general warning signs include alerts for electricity hazards and hot surfaces. Please exercise caution and refer to the manual for further details.

- **How can I contact Fronius for support?**

You can reach out to Fronius via email at contact@fronius.com or visit their website at www.fronius.com for more information and to find Sales & Service Partners near you.

WARNING!

Operating the equipment incorrectly or poor workmanship can cause serious injury or damage. The inverter may only be installed and commissioned by trained personnel acting in accordance with the technical regulations. Before working with the device, ensure that you have read and understood all the documents provided (both hard copies enclosed with the product and documents provided online). Caution! When solar modules are exposed to light, they supply voltage to the inverter. This document does not describe all of the possible system configurations. Fronius International GmbH declares that the radio equipment type Fronius Verto is in compliance with Directive 2014/53/EU.

The full text of the EU declaration of conformity is available at the following internet address: www.fronius.com

Warning signs explanation



General warning sign

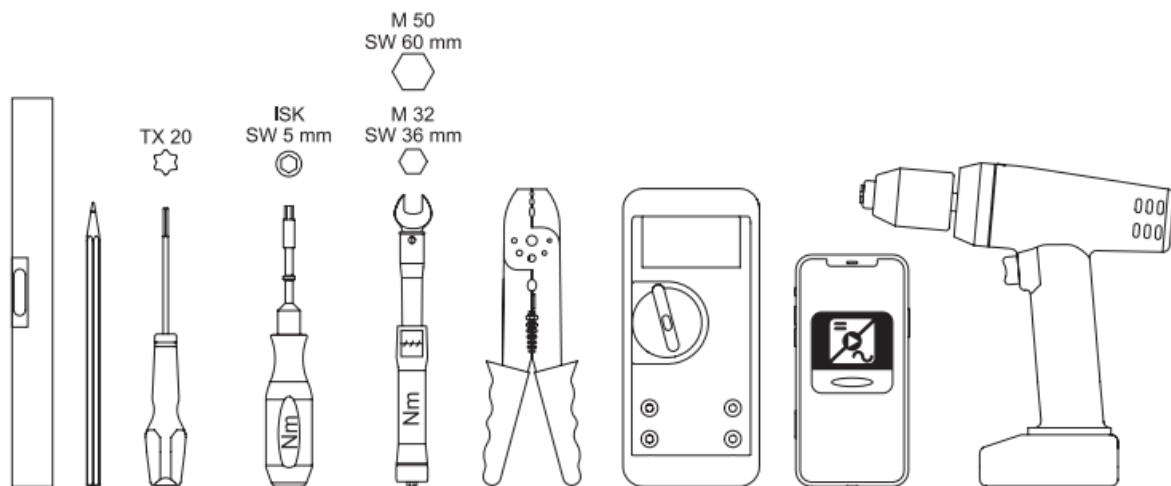


Electricity hazard

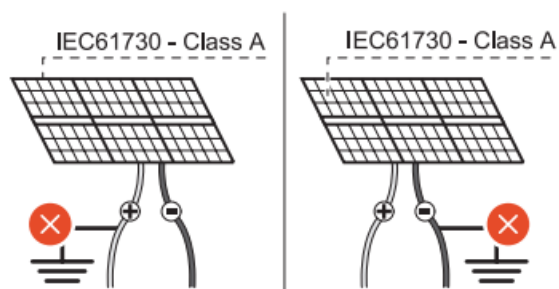


Hot surface

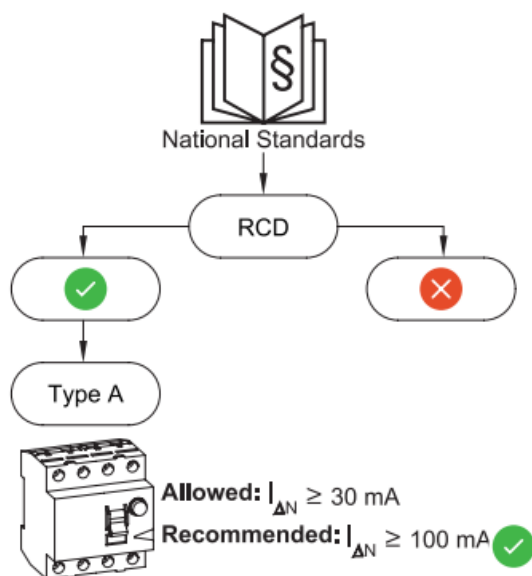
Tools

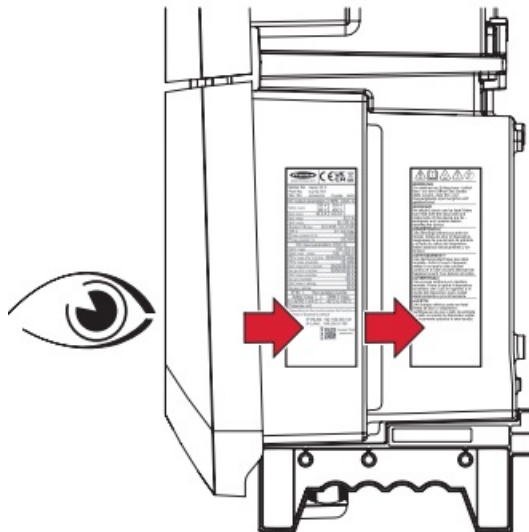


To note during installation

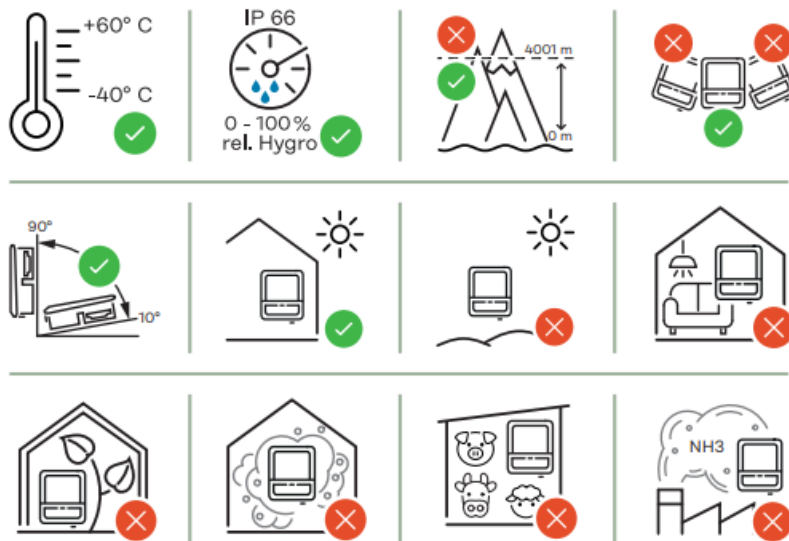


max. 1000 V_{DC}

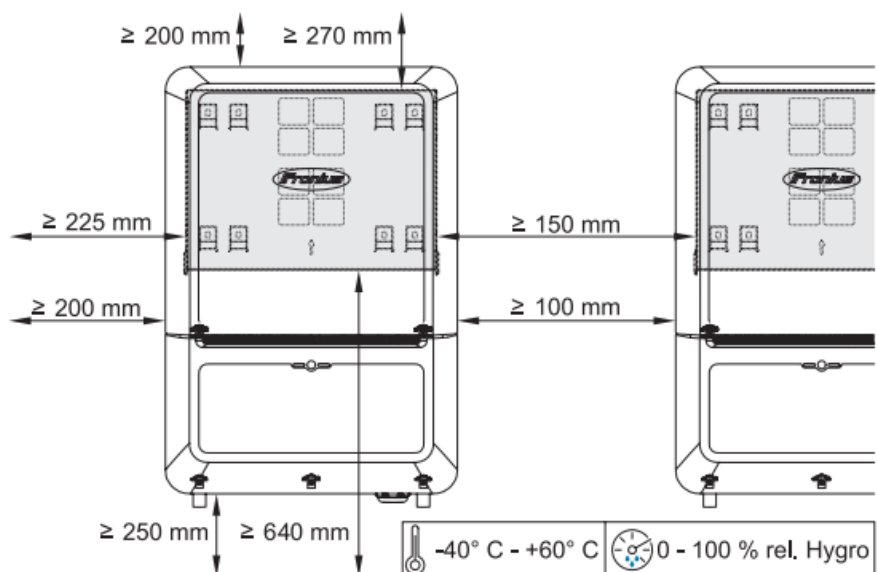




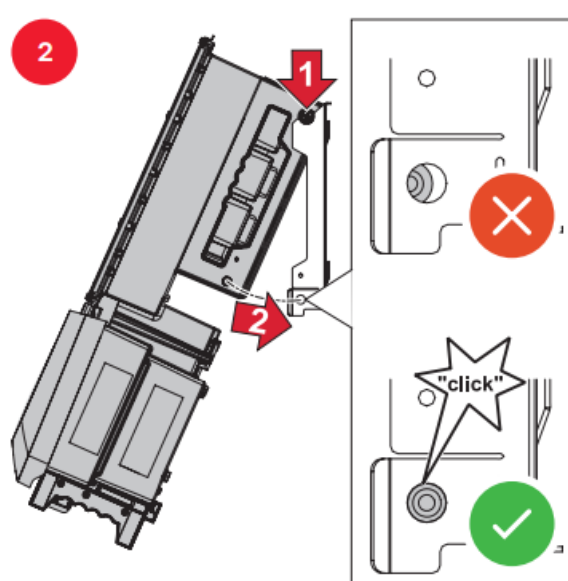
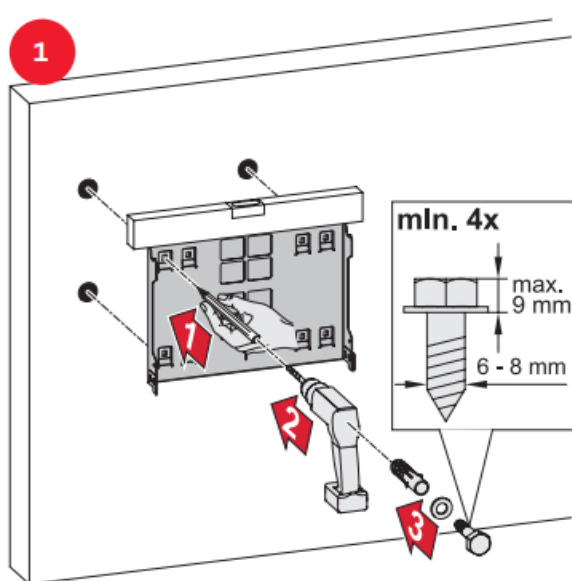
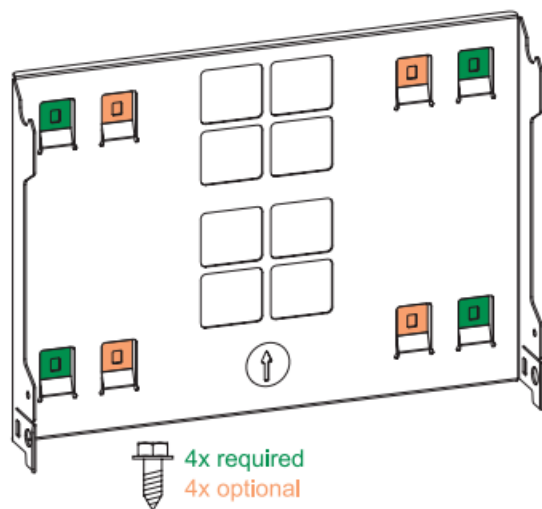
Mounting conditions



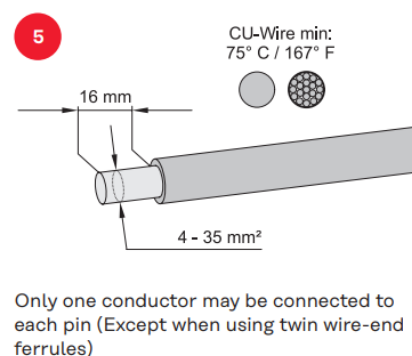
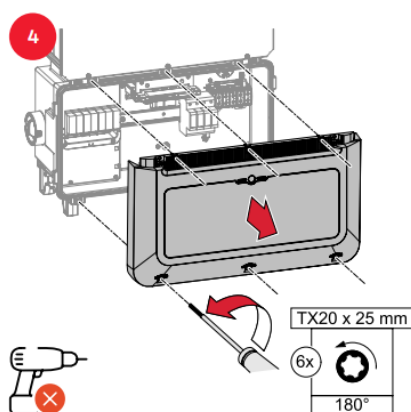
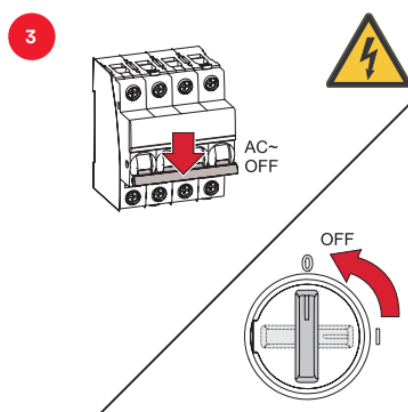
DIMENSION



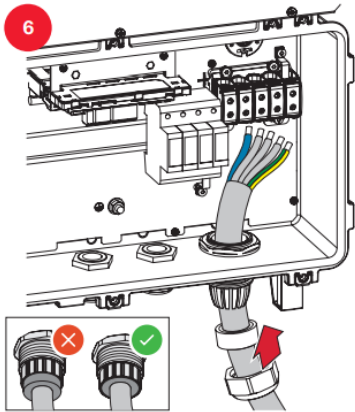
Mounting



AC~

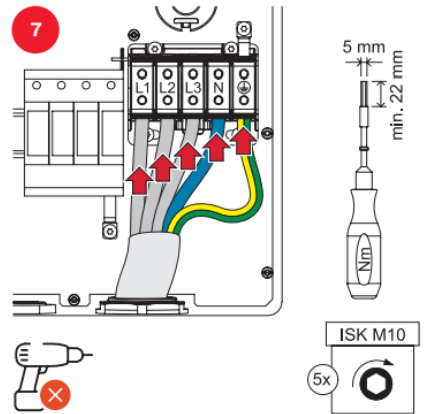


Only one conductor may be connected to each pin (Except when using twin wire-end ferrules)

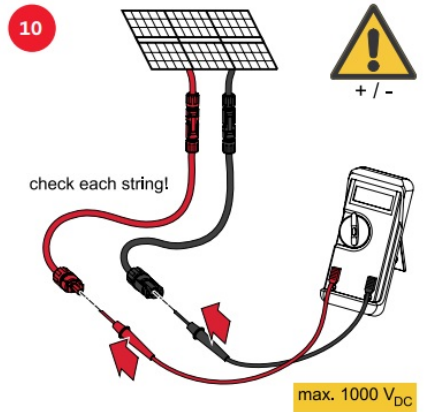
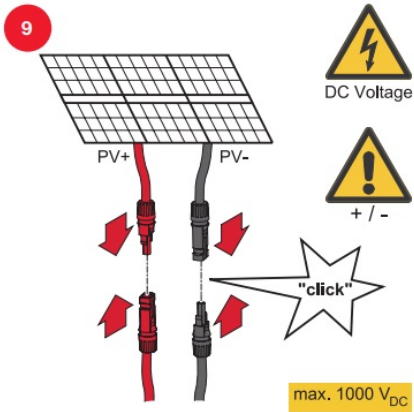
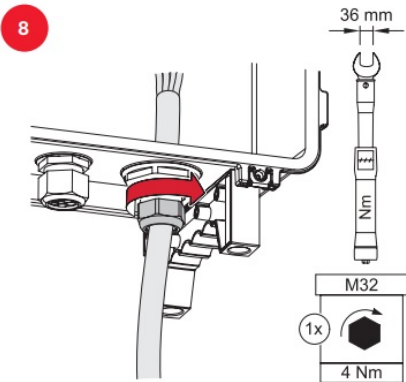


	Cu		Al	
35 mm ²	10 Nm		14 Nm	
25 mm ²	8 Nm		12 Nm	10 Nm
16 mm ²	8 Nm		10 Nm	
10 mm ²	6 Nm		×	×
6 mm ²	6 Nm		×	×
4 mm ²	×	6 Nm	×	×

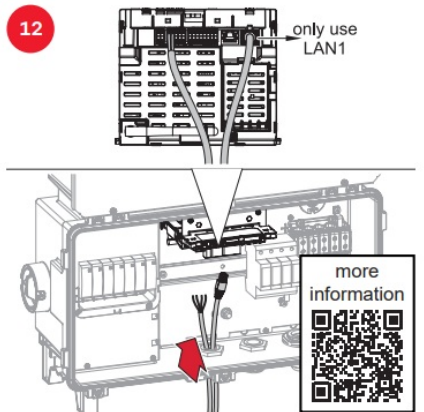
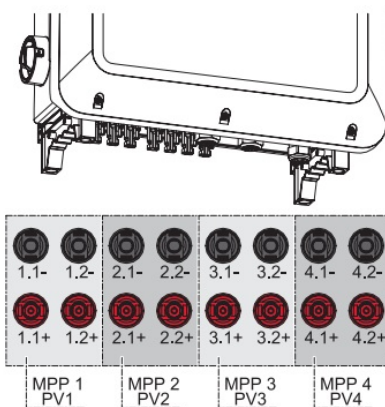
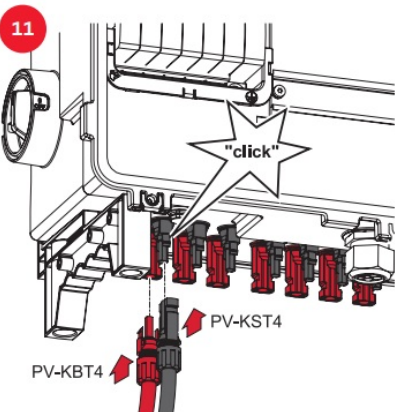
Solid core Stranded with wire-end ferrule
 Stranded Sector shaped



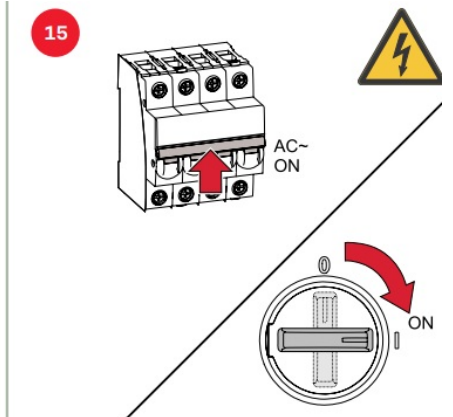
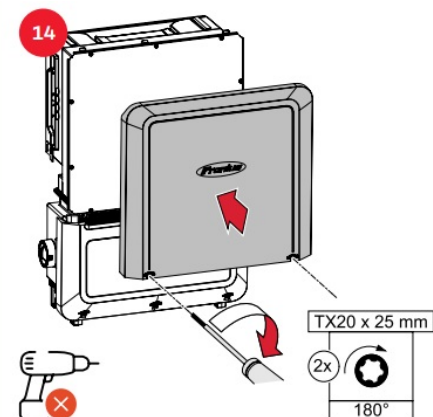
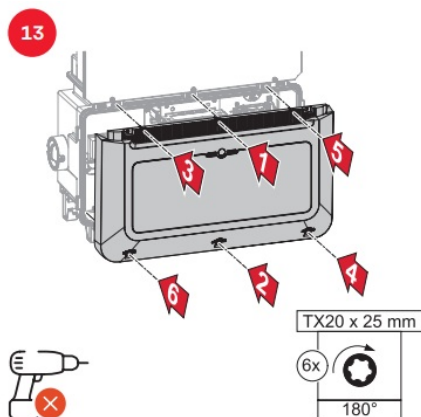
DC=



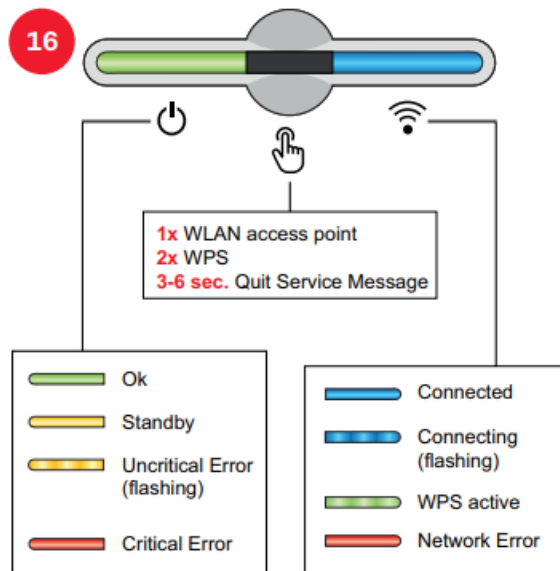
Data communication (optional)



Commissioning

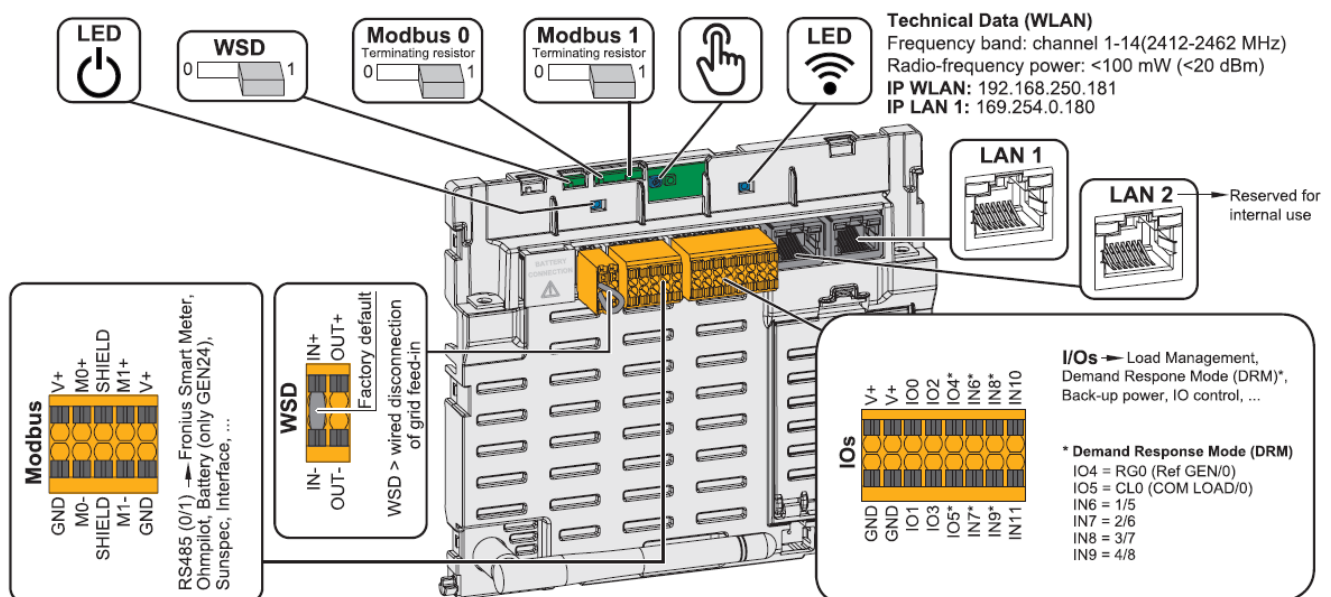
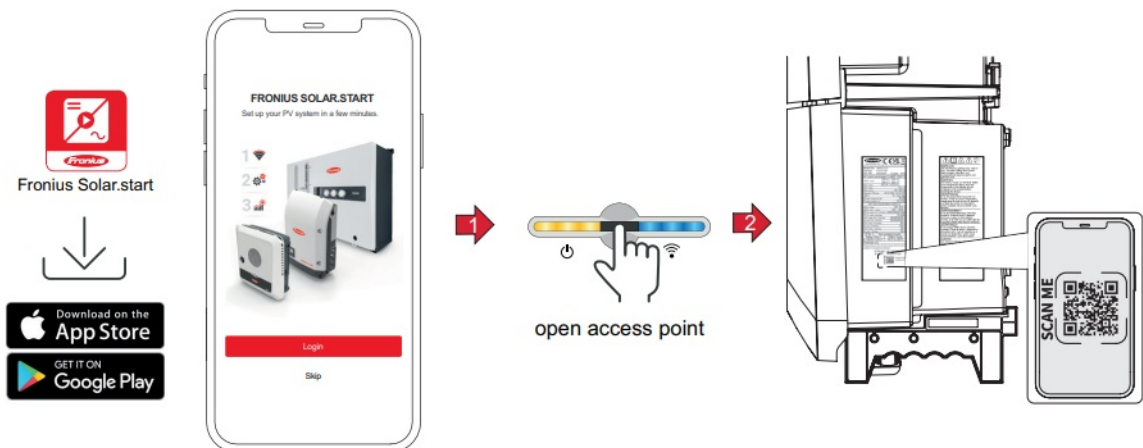


Control panel



Setup with mobile phone

17



Fronius Verto 15.0 – 36.0


Dimensions (height x width x depth)	838.4 x 573.8 x 277.5 mm
Max. short-circuit current (I_{sc} max) Total PV1 / PV2 / PV3 / PV4 Per strand	120 A 40 / 40 / 40 / 40 A 40 A
Max. short-circuit current (I_{sc} PV) Total PV1 / PV2 / PV3 / PV4 Per strand	150 A 50 / 50 / 50 / 50 A 50 A

Fronius International GmbH

- Froniusstraße 1
- 4643 Pettenbach
- Austria
- contact@fronius.com
- www.fronius.com

Under www.fronius.com/contact you will find the addresses of all Fronius Sales & Service Partners and locations.

Documents / Resources

	<p>Fronius Fronius Verto 3 Phase String Inverter [pdf] User Guide</p> <p>42, 0410, 2929, Fronius Verto 3 Phase String Inverter, Fronius Verto, 3 Phase String Inverter, String Inverter, Inverter</p>
--	--

References

- [Fronius Verto 15.0 - 36.0 kW Návod k obsluze](#)
- [User Manual](#)

[Manuals+](#), [Privacy Policy](#)

This website is an independent publication and is neither affiliated with nor endorsed by any of the trademark owners. The "Bluetooth®" word mark and logos are registered trademarks owned by Bluetooth SIG, Inc. The "Wi-Fi®" word mark and logos are registered trademarks owned by the Wi-Fi Alliance. Any use of these marks on this website does not imply any affiliation with or endorsement.