



FRITZ 210 DECT Smart Plug User Guide

[Home](#) » [FRITZ](#) » FRITZ 210 DECT Smart Plug User Guide 

Contents

- 1 FRITZ 210 DECT Smart Plug
- 2 Security
- 3 Package Contents
- 4 Technical Specifications
- 5 Registering with a FRITZ! Box
- 6 Illustration
- 7 Configuring a Smart Home Profile
- 8 Editing a Smart Home Profile
- 9 Switching the Socket
- 10 Automatic Switching
- 11 LEDs and Buttons
- 12 Legal Notice
- 13 Manufacturer's Warranty
- 14 Documents / Resources
 - 14.1 References
- 15 Related Posts

FRITZ

FRITZ 210 DECT Smart Plug



FRITZ!DECT 210 is a switchable socket for your FRITZ! Smart Home.

- FRITZ!DECT 210 switches connected devices on and off automatically according to your specifications. You can control the socket using a weekly calendar, for instance, or a Google calendar.
- In combination with a FRITZ!Fon, a FRITZ!DECT 440/400 switch and the FRITZ!App Smart Home, FRITZ!DECT 210 turns into a remote-controlled socket.
- FRITZ!DECT 210 measures the power consumption of connected electric devices. You have the option of receiving these measurement values in a regular email message.
- FRITZ!DECT 210 is integrated with a FRITZ!Box (not with FRITZ!Box 7312 or FRITZ!Box 7412) via DECT radio transmission and can then be controlled easily on the computer, notebook, tablet or smartphone, from home or anywhere else With internet access.
- In addition to this quick guide, FRITZ!DECT 210 is described in an online help that can be opened by clicking on the question mark interface of the FRITZ!Box.
- FRITZ!DECT 210 can be identified and reached in the FRITZ!Box network via its own unique AIN (Actuator Identification Number). You can find the AIN on the back of the device and in the FRITZ!Box user interface.

Security

- Do not subject FRITZ!DECT 210 to a load higher than its limit of 3450 W/15 A (ohmic load). Overloading can damage FRITZ!DECT 210, or cause malfunctions or an electrical accident.
- Operate FRITZ!DECT 210 only on an easily accessible outlet in a location without direct sunlight that is well ventilated.
- Do not subject FRITZ!DECT 210 to a direct stream of water or direct rain. FRITZ!DECT 210 has splash protection compliant with IP44. IP44-class splash protection applies only when each of the components, plug and socket, have the same protection class.

- Do not connect multiple FRITZ!DECT 210 devices with each other.
- Do not operate any devices that present a risk of fire (for instance, electric irons, radiant heaters, electric grills) unattended on FRITZ!DECT 210.
- Do not modify FRITZ!DECT 210. FRITZ!DECT 210 may not be opened, converted, modified or repaired except by a qualified technician.
- Configure automatic switching for FRITZ!DECT 210 only if the connected devices are designed for such operation. Frequent switching can shorten the service life of electrical devices. No liability will be accepted for attendant damage to corresponding devices.

Package Contents

1. FRITZ!DECT 210



2. quick guide no illustration

Technical Specifications

- Wireless standard: DECT
- Frequency range: 1880 MHz 1902 MHz
- Maximum transmitter power:
- Dimensions (without plug): 65 mm x 127 mm x 36 mm
- Weight: approx. 204 g
- Protection class:
- Px44, splash protection
- Maximum load for connected
- devices up to 3450 W/15 A
- Ambient temperature:
- 20 °C to +40 °C
- Measurable temperature range
- Maximum active power: ca. 1.5 W
- Active power on standby: ca. 0.4 W
- Measurement accuracy

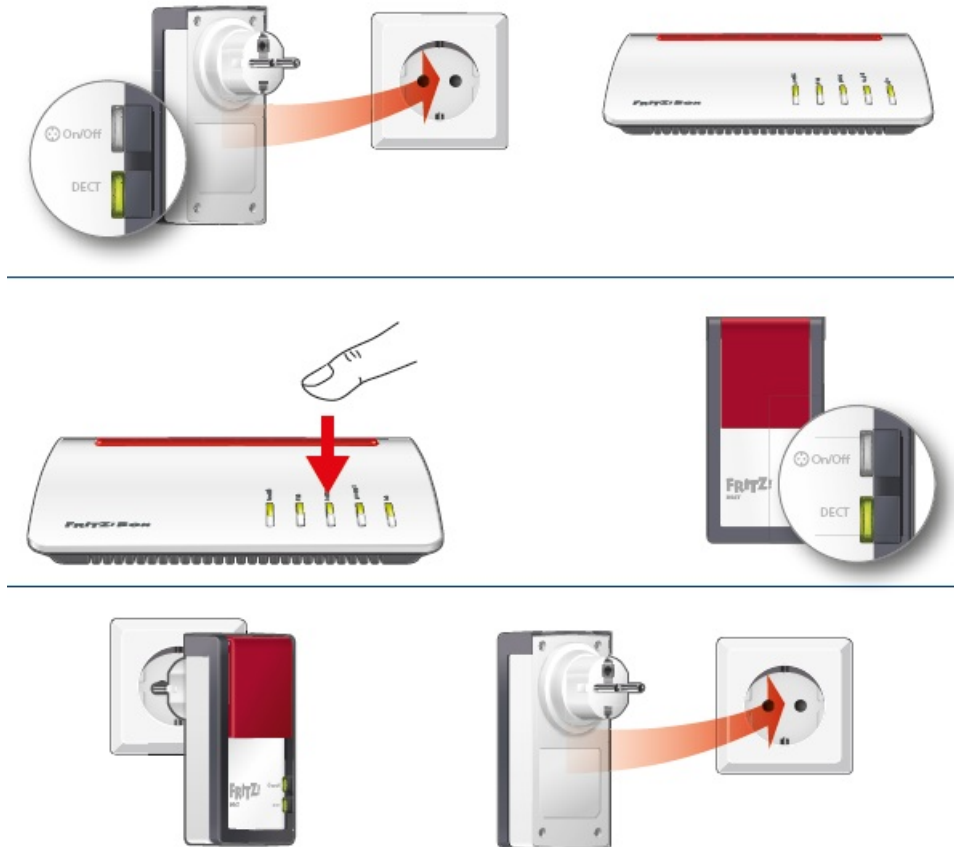
Registering with a FRITZ! Box

- Insert FRITZ!DECT 210 into an outlet near your FRITZ!Box. The DECT LED fl ashes steadily.
- Within 2 minutes, press the DECT button on your FRITZ!Box, and hold it down until the Info or DECT LED

starts flashing. FRITZ!DECT 210 is registered with the FRITZ!Box. The Wi-Fi connection has been established when the DECT LED on FRITZ!DECT 210 lights up. If DECT continues to flash, registration was not successful. Remove FRITZ!DECT 210 from the power outlet and repeat the registration process.

- Now insert FRITZ!DECT 210 into the socket where you would like to use the device and wait a moment for the DECT LED to light up. If DECT keeps flashing, test a different outlet closer to the FRITZ!Box. The outlet must be located within the range of the DECT radio network of the FRITZ!Box.

Illustration



Configuring a Smart Home Profile

FRITZ!DECT 210 can be configured with a Smart Home profile in the user interface of the FRITZ!Box:

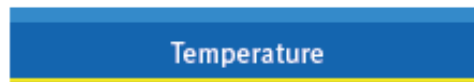
1. Open a web browser.
2. Enter <http://fritz.box> in the address field.
3. Open the Smart Home / Device Management menu.
4. Click on behind your FRITZ!DECT 210.
5. The Smart Home profile of FRITZ!DECT 210 appears.

Editing a Smart Home Profile

You can edit the Smart Home profile of your FRITZ!DECT 210 under Smart Home / Device Management in the FRITZ!Box user interface:

- Specify switch status
- Save the electricity rate

- Switch off LED display, prevent manual switching, and configure the temperature offset
- Enable push service and receive notifications about device status by email



- Configure automatic switching
- Monitor power consumption
- Monitor temperature variation

Switching the Socket

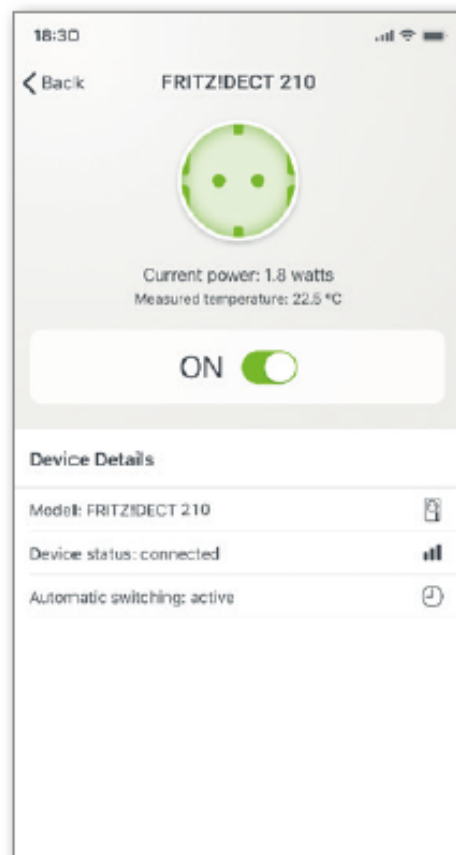
The socket on your FRITZ!DECT 210 can be switched on and off in various ways.

Switching On and Off

- with the "On/Off" button on FRITZ!DECT 210
- with the FRITZ!App Smart Home and your smartphone (see „Switching with FRITZ!App Smart Home“ auf Seite 23)
- in the FRITZ!Box user interface
- directly in the Smart Home / Operation menu
- with automatic switching in the Smart Home / Device Management menu(see „Automatic Switching“ auf Seite 24)
- with a FRITZ!Fon
- via the navigation of your FRITZ!Fon in the Smart Home menu or
- directly from the Home screen for Smart Home applications See the documentation of your wireless device.
- with a FRITZ!DECT 440/400 switch
- The FRITZ!DECT 440/400 switch must be configured for Smart Home applications.
- See the documentation of your wireless device.

Switching with FRITZ!App Smart Home

You can switch FRITZ!DECT 210 on and off with FRITZ!App Smart Home.



1. Install the FRITZ!App Smart Home on your smartphone and connect it to your FRITZ!Box.
2. With the FRITZ! App Smart Phone you can switch FRITZ!DECT 210 with your smartphone, and monitor its switch status, performance, and temperature.

Automatic Switching

1. Open a web browser.
2. Enter <http://fritz.box> in the address field.
3. Open the Smart Home / Device Management menu.
4. Click on the Switch Automatically tab.
5. Enable the Automatic switching enabled option and configure a switching schedule.
6. Click on OK to save the settings.

7. Click on behind your FRITZ!DECT 210.

LEDs and Buttons

	Action / Display	Condition
On/Off	Press the button	Switch the socket on and off
	off	Socket is switched off
	on	Socket is switched on
	flashing	Software update in progress
	flashes briefly	Maximum load exceeded (3450 W/15 A ohmic load)
	Press and hold the button down for at least 6 seconds	FRITZ!DECT 210 is deregistered from your FRITZ!Box.
	on	FRITZ!DECT 210 is registered with your FRITZ!Box.
	flashing	Software update or registration in progress

DECT	flashes briefly at regular intervals	FRITZ!DECT 210 is not connected with your FRITZ!Box (not registered, or outside the DECT range)
------	--------------------------------------	---

Legal Notice

Conformity

Declaration of Conformity AVM hereby declares that the device is compliant with the Directive 2014/53 / EU.

UKCA Declaration of Conformity

AVM hereby declares that the device is compliant with the Radio Equipment Regulations 2017 (S.I. 2017/1206). The full text of the declarations of conformity is available at <https://en.avm.de/service/declarations>.

Disposal

In accordance with European directives, FRITZ!DECT 210 may not be disposed of with household waste. Please bring the device to a local collection point for disposal after use.

Manufacturer's Warranty

We offer a manufacturer's warranty of 2 years for this original product. The warranty period begins with the date of purchase by the first end-user. Compliance with the warranty period can be proven by submission of the original invoice or comparable documents. This warranty does not restrict your warranty rights based on the contract of sale or other statutory rights. Within the warranty period, we will remove defects to the product which are demonstrably due to faults in materials or manufacturing. Our warranty does not cover defects that occur due to incorrect installation, improper use, non-observance of instructions in the user manual, normal wear and tear or defects in the environment of the system (third-party hardware or software). We may, at our discretion, repair or replace the defective product. Claims other than the right to the removal of defects which is mentioned in these terms of warranty are not constituted. We guarantee that the software conforms with general specifications, not, however, that the software meets your individual requirements. Delivery costs will not be reimbursed. Products which have been replaced revert to our ownership. Claims recognized under warranty entail neither an extension or recommencement of the warranty period. If we reject a warranty claim, this claim lapses no later than six months after being rejected by us. This warranty shall be governed by German substantive law, to the exclusion of the United Nations Convention on Contracts for the International Sale of Goods (CISG).

Documents / Resources



[FRITZ 210 DECT Smart Plug](#) [pdf] User Guide
210, DECT Smart Plug

References

- [AVM FRITZ!DECT | AVM Deutschland](#)
- [AVM Complete home networking | AVM International](#)
- [AVM Declarations for FRITZ!Box | AVM International](#)
- [AVM Service | AVM International](#)
- [AVM FRITZ!DECT | AVM España](#)
- [AVM FRITZ!DECT | AVM Italia](#)
- [AVM FRITZ!DECT | AVM Nederland](#)
- [AVM FRITZ!DECT | AVM International](#)
- [AVM Declarations for FRITZ!Box | AVM International](#)
- [AVM FRITZ!DECT | AVM Luxemburg](#)

[Manuals+](#).