



Fricoffee CJ-265C Espresso Machine Operation Manual

[Home](#) » [Fricoffee](#) » Fricoffee CJ-265C Espresso Machine Operation Manual 

Contents

- [1 Fricoffee CJ-265C Espresso Machine](#)
- [2 Parts diagram](#)
- [3 Before Initial Use](#)
- [4 Handling and Operation](#)
- [5 Programming Quantities](#)
- [6 Cappuccino and Latte Macchiato](#)
- [7 Reset to Factory Settings](#)
- [8 Preparation](#)
- [9 Cleaning and Care](#)
- [10 Troubleshooting](#)
- [11 FREQUENTLY ASKED QUESTIONS](#)
- [12 VIDEO – PRODUCT OVERVIEW](#)
- [13 References](#)
- [14 Related Posts](#)

FRICOFFEE

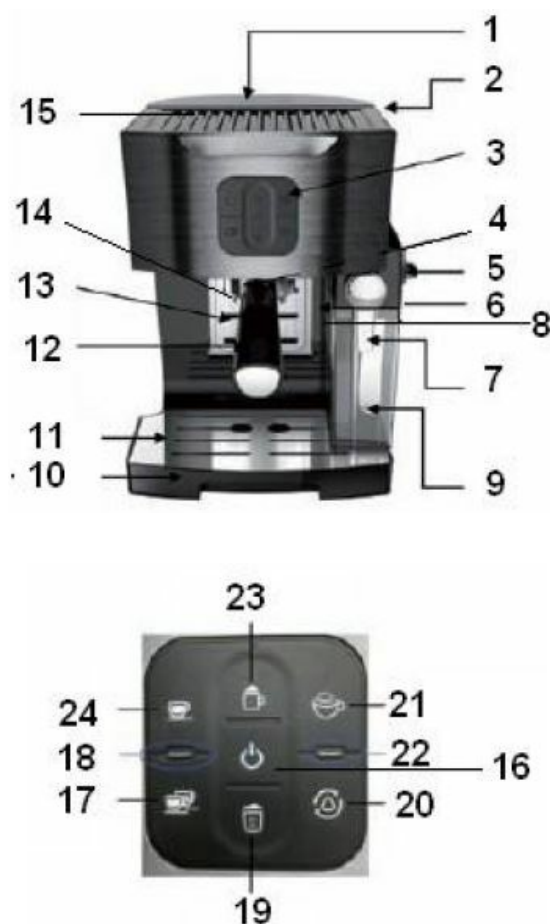
Fricoffee CJ-265C Espresso Machine



Parts diagram

1. Water tank lid
2. Water tank
3. Control panel
4. Release button for the milk tank
5. Milk froth dial
6. Milk tank cover
7. Lever for the milk nozzle
8. Milk nozzle
9. Milk container
10. Drip tray
11. Cover for the drip tray
12. Portafilter
13. Fold-down deposit surface
14. Coffee outlet
15. Cup warmer
16. Button (On / Off switch)
17. Button – for double espresso
18. Red indicator light
19. Button – for latte macchiato
20. Button – self-cleaning
21. Button – for milk froth
22. Yellow indicator light
23. Button – for cappuccino

24. Button – for espresso



Not shown:

- Filter, small (1 cup of espresso)
- Filter, large (2 cups of espresso)
- Coffee spoon with tamper

Before Initial Use

NOTES

- Always set up the device with a clear space at the sides (at least 20 cm) and clear space above it (at least 30 cm) on a flat, solid and heat-resistant surface that is resistant to splashing.
- Do not place the device below kitchen wall units or similar cupboards. The rising steam could cause damage to them!
- The surfaces of furniture may possibly contain elements which can attack and soften the adjustable feet of the device. If necessary, place a suitable pad below the adjustable feet.
- There may still be some production residues on the device. To avoid harmful effects to your health, clean the device before you first use it (see the “Cleaning and Care” chapter).
- Wipe down the device with a clean, damp cloth. Rinse the water tank (1), the milk container (9), the portafilter (12), the two filters, the drip tray (10), the cover (11) and the spoon with tamper with a little mild detergent and clear water.

1. Set up the device in a suitable location, following the safety instructions and the notes provided at the beginning of this chapter.
2. Completely unwind the mains cable and plug into a properly installed plug socket that is easily accessible.
3. Before you enjoy your first coffee, we recommend that you carry out a trial run with coffee powder to remove any possible production residues in the water system and in the milk tank system. To do this, follow the instructions in the “Handling and Operation” and “Use” chapters. When the device is first used, production-related additives (e.g. grease) may cause a small amount of smoke and / or an odour to be produced. This is normal and not a device defect.
4. Clean the device and accessories (see the “Cleaning and Care” chapter).

Handling and Operation

NOTES

- Do not pour milk or other liquids into the water tank. Only ever use water to make coffee!
- Do not pour any liquids into the milk tank other than milk or if necessary water for cleaning.
- Never overfill the portafilter.

Inserting the Drip Tray

The device is supplied with a drip tray (10) as coffee might drip out of the coffee outlet (14) or milk might drip out of the milk nozzle (8) after making coffee. Only attach the drip tray to the device / remove it from the device when the milk tank is not inserted in the device.

1. Place the cover (11) on the drip tray. Make sure that it fits correctly.
2. Place the drip tray on the surface and slide it into the device at the designated point.

Filling the Water Tank

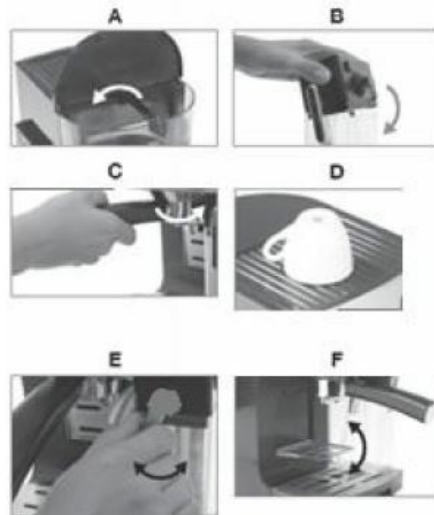
1. Open the water tank lid (1).
2. Take out the water tank (2) by the handle.
3. Pour the quantity of water you want (note the MAX marking) into the water tank.
4. Reinsert the water tank and flip the handle down (Picture A). Make sure that the water tank fits correctly.
5. Close the water tank lid.

If the water in the water tank is not used within two days, pour away the remaining water and refill the water tank before you use it again.

Filling the Milk Tank

1. Remove the milk tank from the device by pressing the release button (4) and pulling the milk tank to the side at the same time.
2. Remove the milk tank cover (6) from the milk container (9) by pressing the release button on the side of the milk tank cover, flipping it up to one side and taking it off.
3. Pour the quantity of milk you want (note the MAX marking) into the milk container.

4. Place the milk tank cover onto the milk container at an angle and flip it shut (Picture B). When you do this, make sure that the locking lugs sit in the recesses which are provided for them. The cover must be heard to engage in place.
5. Insert the milk tank back in the device. It must click audibly into place. Make sure that the milk tank fits correctly. If the milk in the milk tank is not used up, pour away the remaining milk, clean the milk tank and refill it before you use it again.



Inserting / Removing the Filter in the Portafilter

Insert the filter you want into the portafilter (12). The filter must fit securely in the portafilter so that it cannot fall out when coffee powder is removed. Small filter for single espresso, normal cappuccino, normal latte macchiato. Large filter for double espresso or two espressos, strong cappuccino, strong latte macchiato To remove the filter from the portafilter, reach either with your fingernails or with a thin, hard object between the filter and portafilter and pry out the filter.

Filling the Filter With Coffee Powder

1. Use the measuring spoon to pour the quantity of coffee powder you want into the desired filter in the portafilter (12). One heaped measuring spoon is equivalent to roughly one filled small filter.
2. Press down the coffee powder in the filter with the tamper.

Only ever use pure espresso / coffee powder which is not ground too fine. Coffee substitute or coffee extract contain sticky substances which can block the sieves.

Inserting / Removing the Portafilter

1. Insert the portafilter (12) into the device so that the two locking lugs on the portafilter sit in the recesses which are provided for them on the device. Twist the portafilter anticlockwise to secure it (Picture C).
2. To remove the portafilter from the device, turn it clockwise a little and then pull it out downwards.
3. To remove the used coffee powder, tap the portafilter gently against an edge (e.g. of a dustbin, a bowl or similar object) so that the compressed coffee powder can be released. Dispose of the coffee powder in an environmentally friendly manner.

Cup Warmer

The device features a cup warmer (15) which is heated automatically as soon as the device is switched on. Turn over the cups which are to be heated and place them on the cup warmer for approx. 5 – 10 minutes (Picture D).

Switch On

When the device is first switched on, the red control lamp (18) flashes and you will hear two beeps several times in succession to indicate that the device is not yet ready for operation.

1. Place a cup or a small vessel under the coffee outlet (14).
2. Press any button. The device draws water and fills the water system with liquid. A small amount of water always runs through here. The device is now ready for operation.
3. Press the button (16) to switch on the device and preheat the water. The control panel flashes during the heating process.

Programming Quantities

Both the quantity of espresso and the quantity of milk can be programmed for each function. This allows you to set the perfect quantity of espresso and milk to suit your own taste. The set quantities are saved until a new quantity is set. Espresso, Double Espresso, Milk Froth

1. Fill the device as if a speciality coffee is to be prepared
2. If necessary, fold out the milk nozzle (8) using the lever (7) (Picture E).
3. Place a suitable cup below the coffee outlet (14) or the milk nozzle.
4. Select the function that is to be reprogrammed. Press the appropriate button (a beep sounds) and keep it held down (another beep sounds).
5. The device starts to prepare espresso or make milk froth.
6. Only let go of the button once the quantity of milk or espresso that you want has passed through. You will hear three beeps. This quantity is now saved under the corresponding function.

Cappuccino and Latte Macchiato

This process must be carried out twice for latte macchiato and cappuccino: Once for the quantity of espresso and once for the quantity of milk:

1. On the first operation, set the quantity of milk you want in the manner described in the previous section. Make sure that the milk nozzle (8) is folded out and there is a cup below the milk nozzle.
2. Start a second operation by pressing the appropriate button again. A beep sounds.
3. Wait until the quantity of milk has passed through.
4. As soon as the device starts to make espresso, press the appropriate button again and hold it down. Another beep sounds.
5. Only let go of the button again once the quantity of espresso that you want has passed through. You will hear three beeps. Now both the quantity of milk and the quantity of espresso are saved under the appropriate function.

Setting the Milk Froth Quantity

On the milk tank cover (6) there is a dial (5) which can be used to set whether more milk froth or more hot milk should be added to the speciality coffee.

- **For more milk froth:** Turn the dial to the top right.
- **For more hot milk:** Turn the dial to the bottom left.

Reset to Factory Settings

If the amount of espresso and amount of milk are to be reset to the amounts preset in the factory, proceed as follows:

1. Switch off the device via the button (16).
2. Press the buttons (24) and (17) simultaneously and keep them held down.
3. Switch the device back on via the button. The control panel (X) flashes 5 times and 5 beeps are heard.
4. Let go of the buttons and . The amounts have now been reset to the factory settings.

Preparation

NOTES

1. Do not operate the device without water. If this does happen, the device issues an error message (several beeps in succession) (see the “Troubleshooting” chapter).
2. Never use the device without a suitable container below the coffee outlet and the milk nozzle.

The device remains in operation and the control panel is lit up for up to 30 minutes after the last action. During this time, the cup warmer (15) is heated. Once 30 minutes have elapsed, the device needs to be switched on again using the button (16) to prepare another speciality coffee. If the brewing process is to be aborted prematurely, press the chosen button again. You will hear a beep, and the control panel is fully lit up again. The device is in stand-by mode.

Espresso / Double Espresso

The perfect amount of espresso to suit your own taste can be programmed in the device

1. Fill the water tank (1)
2. Insert the filter you want into the portafilter (12)
3. Fill the filter with coffee powder
4. Insert the portafilter into the device
5. Press the button (16) to switch on the device and preheat the water. The control panel flashes during the heating process. If the milk tank is not inserted, only the button (24) for an espresso or the button (17) for two espressos can be selected. Accordingly, the control panel is also only lit for these buttons.
6. Place one or two suitable cup(s) under the coffee outlet (14). For small cups, the device has a fold-down deposit surface (13) on the housing. Simply flip this down (Picture F).
7. As soon as the device has heated up, the control panel stops flashing. Press the button for an espresso or the button for two espressos or a double espresso.

- A beep sounds, the brewing process starts and the chosen button flashes. Hot water is poured over the coffee powder to brew it.
- At the end of the brewing process, a beep sounds, the control panel is fully lit up again and the device automatically switches to stand-by mode.

Cappuccino / Latte Macchiato

The perfect amount of espresso and milk to suit your own taste can be programmed in the device

1. Fill the water tank (2)
2. Fill the milk tank
3. Insert the filter you want into the portafilter (12)
4. Fill the filter with coffee powder.
5. Insert the portafilter into the device.
6. Fold out the milk nozzle (8) using the lever (7) (Picture E).
7. If necessary, select the setting you want using the dial for the milk froth (5)
8. Press the button (16) to switch on the device and preheat the water. The control panel flashes during the heating process.
9. Place a suitable cup below the coffee outlet (14) and the milk nozzle.
10. As soon as the device has heated up, the control panel stops flashing. Press the button (23) for cappuccino or the button (19) for latte macchiato. A beep sounds, the brewing process starts and the chosen button flashes. Milk is heated with steam and frothed up. Hot water is poured over the coffee powder to brew it. At the end of the brewing process, a beep sounds, the control panel is fully lit up again and the device automatically switches to stand-by mode.

Milk Froth

The perfect amount of milk to suit your own taste can be programmed in the device

1. Fill the water tank (2)
2. Fill the milk tank
3. Fold out the milk nozzle (8) using the lever (7) (Picture E).
4. Select the setting you want using the dial for the milk froth (5).
5. Press the button (16) to switch on the device and preheat the water. The control panel flashes during the heating process.
6. Place a suitable cup below the milk nozzle.
7. As soon as the device has heated up, the control panel stops flashing. Press the button (21). A beep sounds, the brewing process starts and the chosen button flashes. Milk is heated with steam and frothed up. At the end of the brewing process, a beep sounds, the control panel is fully lit up again and the device automatically switches to stand-by mode.

Cleaning and Care

NOTES

- Before commencing the cleaning, note the safety instructions in the “Safety Instructions” chapter!
 - Do not use any toxic, corrosive or abrasive cleaning agents or scouring sponges to clean the device. These can damage the surface.
1. Clean the milk container (9) and the filters after every use with mild detergent and warm water or in the dishwasher.
 2. Rinse through the tube in the milk tank with clear hot water to remove milk residues after every use.
 3. If necessary, clean the water tank (2) and the drip tray (10) and the cover (11) with mild detergent and warm water or in the dishwasher.
 4. Regularly run the cleaning programme (see “Self-Cleaning”) to clean the milk tank system as well as the coffee outlet (14) on the portafilter (12).
 5. Wipe down the housing with a damp cloth. If necessary, use a little mild detergent to remove more intense soiling.
 6. Thoroughly dry the device and all accessories before assembling it again.
 7. Check the mains cable regularly for any damage.

Self-Cleaning

Quick Clean of the Milk Tank System

The quick clean of the milk tank system should be carried out after every use so that no milk residues can remain in the system and dry on or go mouldy.

1. Fill the milk tank with water
2. Fold out the milk nozzle (8) using the lever (7) (Picture E).
3. Press the button (16) to switch on the device and preheat the water. The control panel flashes during the heating process.
4. Place a suitable cup below the milk nozzle.
5. As soon as the device has heated up, the control panel stops flashing. Press the button (20). A beep sounds, the self-cleaning starts and the button flashes.
6. Run the programme and pour away the contents of the cup after the self-cleaning finishes.
7. Repeat this process if necessary.

Intensive Clean of the Portafilter and Milk Tank System

During the intensive clean, the portafilter is also thoroughly rinsed through in addition to the milk tank system. This allows coffee residues which are stuck on to be rinsed out of the portafilter and the filters if applicable.

1. Fill the water tank (2) with water
2. Also fill the milk tank with water.
3. Fold out the milk nozzle (8) using the lever (7) (Picture E).
4. Press the button (16) to switch on the device and preheat the water. The control panel flashes during the heating process.
5. Place a suitable cup below the coffee outlet (14) and the milk nozzle.
6. As soon as the device has heated up, the control panel stops flashing. Press the button (20) for approx. 5

seconds. A beep sounds, the self-cleaning starts and the button flashes.

7. If you want to stop the cleaning, press the button again. The device switches to stand-by mode.
8. Pour away the water in the cup.
9. Repeat this process if necessary.

Descaling

- Limescale deposits have an adverse effect not only on the quality of the espresso and the water, but they also cause power losses and shorten the lifespan of the device. The thicker a limescale layer is, the more difficult it is to remove. We therefore recommend regularly removing limescale deposits with a descaling agent in accordance with the water quality in your area and how often the device is used (approx. every 2 – 6 weeks).
- The first indications that descaling is required are a large amount of steam being produced and slower brewing of the espresso.
- The device indicates at regular intervals that it needs to be descaled! When the yellow control lamp (22) is lit, a descaling process should be performed. The control lamp goes out as soon as a cleaning or descaling process has been performed.

Storage

- Disconnect the device from the mains power when it is not going to be used for a prolonged period. Clean the device again if necessary and let it dry completely.
- Store the device and all accessories in a dry, clean, frost-free place that is protected from direct sunlight and cannot be accessed by children or animals.

Troubleshooting

If the device does not work properly, check whether you are able to rectify the problem yourself. If the problem cannot be solved with the steps that are listed, contact the customer service department.

Do not attempt to repair a defective electrical device yourself!

- **Problem:** The red indicator light lights up constantly.
 - **Possible Cause:** The device is defective.
 - **Fix:** Contact customer service via the website.
- **The yellow indicator light (22) flashes .**
 - **Possible Cause:** The device is furred up.
 - **Fix:** Descale the device (see “Cleaning and Care” chapter “Descaling”).
- **The espresso runs very slowly into the cup .**
 - **Possible Cause:** The coffee outlet (14) or the filter is clogged.
 - **Fix:** Clean the portafilter (12) and the filter.
- **The espresso is too weak.**
 - **Possible Cause:** There is not enough coffee powder in the filter.
 - **Fix:** Pour the right quantity of coffee powder into the respective filter (see “Handling and Operation” chapter “Filling the Filter with Coffee Powder”).

- **A large amount of steam is produced in the brewing process.**
 - **Possible Cause:** Cappuccino, latte macchiato or milk froth has been selected, but there is no milk in the milk tank.
 - **Fix:** Descale the device (see “Cleaning and Care” chapter “Descaling”).
- **During use, an unpleasant smell is detected.**
 - **Possible Cause:** Is the device being used for the first time? Or has the device just been descaled?
 - **Fix:** Rinse out the device with clear water.
- **Problem:** The control panel (3) does not light up / the device cannot be switched on.
 - **Possible Cause:** The mains plug is not inserted correctly in the plug socket.
 - **Fix:** Insert the mains plug.
- **The fuse in the fuse box is triggered.**
 - **Possible Cause:** Too many devices connected to the same circuit.
 - **Fix:** Reduce the number of devices in the circuit.
- **Water runs out of the device.**
 - **Possible Cause:** There is too much water in the water tank (2).
 - **Fix:** Do not overfill the water tank.
- **A function has been selected, but the device beeps constantly and the red indicator light (18) flashes. The control panel does not light up.**
 - **Possible Cause:** There is no water in the water tank.
 - **Fix:** Detach the water tank from the device and fill it with water (see “Handling and Operation” chapter “Filling the Water Tank”). Then press any button.

Technical Data

- **Model number:** CJ-265C
- **Voltage supply:** 110-130V ~ 50 -60 Hz
- **Power:** 1240 – 1450 W
- **Protection class:** I

FREQUENTLY ASKED QUESTIONS

What is the brand of the espresso machine?

The espresso machine is from the brand Fricoffee.

In what color is the Fricoffee CJ-265C Espresso Machine available?

The color is mentioned as black.

What are the product dimensions of the Fricoffee CJ-265C Espresso Machine?

What special feature does the CJ-265C model have?

The special feature is a Milk Frother.

What type of coffee maker is the Fricoffee CJ-265C?

It is an Espresso Machine.

What is the model number of the CJ-265C?

The model number is CJ-265C.

What functions can be achieved with one-button operation on this espresso machine?

Single cup espresso, double cup espresso, cappuccino, latte, milk foam, self-cleaning, and other functions.

What is the professional pressure rating (BAR) of the CJ-265C Espresso Machine?

It has a professional 20BAR pump for fully extracting coffee.

How does the self-cleaning function work on the Fricoffee espresso machine?

It can be used for quick cleaning of the milk frothing system, as well as deep cleaning of the extraction system and the milk frothing system.

How can you transition from a single to a double espresso with this machine?

You can easily transition from single to double espresso with just one press.

What is the purpose of the side knob on the coffee machine?

The side knob can adjust the size of the foam milk, producing dense micro foam with a silky taste.

What is included in the package contents of the Fricoffee CJ-265C Espresso Machine?

The package includes the main unit, two stainless steel filters, powder scoop, portafilter, long milk tube*2, and a coaster.

Is there a feature for self-cleaning the milk frothing system on this machine?

Yes, the espresso machine has a self-cleaning function for the milk frothing system.

Can the milk container be detached and placed in the refrigerator?

Yes, the detachable milk container can be taken out and placed in the refrigerator for convenient milk storage.

What cup holders are included with the Fricoffee CJ-265C?

In addition to the bottom cup holder for large cups, the small espresso machine comes with a foldable upper cup holder designed for small coffee cups to prevent coffee from spilling.

VIDEO – PRODUCT OVERVIEW



[Download the PDF link: Fricoffee CJ-265C Espresso Machine Operation Manual Machine-Operation-Manual.mp4](#)

REFERENCE: [Fricoffee CJ-265C Espresso Machine Operation Manual-Device.Report](#)

References

- [User Manual](#)