



FRESHLIANCE BlueTag T10/TH10 Bluetooth Temperature Data Loggers User Manual

[Home](#) » [FRESHLIANCE](#) » FRESHLIANCE BlueTag T10/TH10 Bluetooth Temperature Data Loggers User Manual



FRESHLIANCE BlueTag T10/TH10 Bluetooth Temperature Data Loggers





Please scan the above QR code or enter <https://www.freshliance.com/T-keeper.html> to download the APP (Android version only)

Contents

- 1 Notice:
- 2 Button Function:
- 3 Indicator Status Description:
- 4 Add Devices:
- 5 Parameters Configuration:
- 6 Check Real-time Data:
- 7 Read Historical Data:
- 8 Stop the device:
- 9 Export Report:
- 10 Device List:
- 11 Delete Device:
- 12 APP Settings
- 13 Parameter:
 - 13.1 FCC Warning Statement
- 14 Documents / Resources
 - 14.1 References
- 15 Related Posts

Notice:

1. Please complete the configuration within 3 minutes after power on, or the device will be off automatically. When configuration is required, it should be turned on again;
2. Please keep the mobile phone network unblocked when using. When there is no network, the local temperature data of the device can only be obtained.
3. In order to scan the QR code successfully, please be sure the light is bright and it's better no other Bluetooth devices around.
4. Do not click "End" button on the APP at will. Once clicked, only real-time data will be displayed and it couldn't record any more.
5. One device can be connected with many mobile phones.

Button Function:

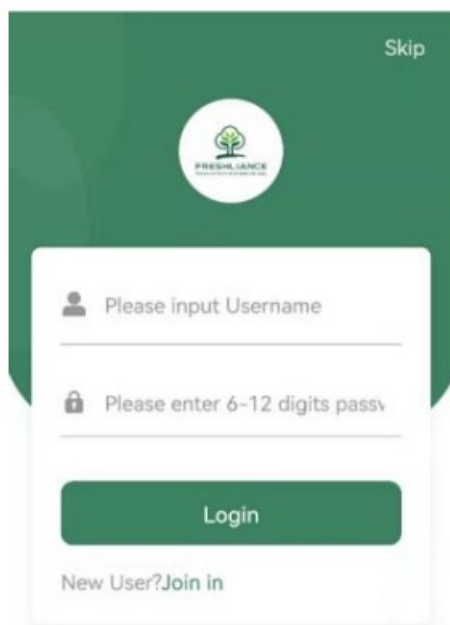
Press the button for 5 seconds	Power on
Press the button shortly	Check alarm status

Indicator Status Description:




Red and green indicators flash 3 times together, then green indicator flashes once	The device is turned on with sufficient power
Red and green indicators flash 3 times together, then red indicator is on for 5 seconds	The device is turned on without sufficient power . Use it with caution
After the red and green indicators flash for 3 times together, the red indicator is on for 60 seconds:	The device is ended, and not available for use any more
The red indicator flashes every 30 seconds	Out of temperature alarm range
The green indicator flashes every 30 seconds	Within temperature alarm range
When the button is pressed shortly, the red indicator flashes once	Out of temperature alarm range
When the button is pressed shortly, the green indicator flashes once	Within temperature alarm range
When entering the detailed page, the red and green indicators flash once together:	Mobile phone is successfully connected to the device

Add Devices:

1. Open the APP and click Join in to register. After registration, please log in;

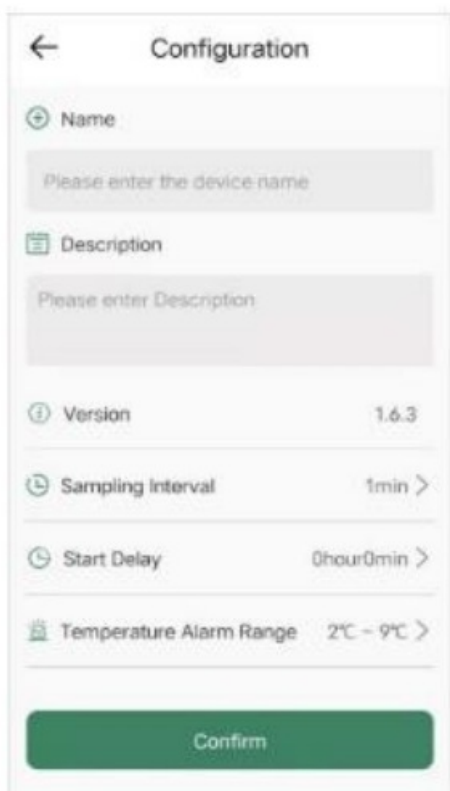


The image shows the login screen of the FreshLance app. It has a green header with a 'Skip' button in the top right corner. Below the header is a circular logo with a tree icon and the text 'FRESH LANCE'. The main area is white and contains two input fields: 'Please input Username' and 'Please enter 6-12 digits passv'. Below these fields is a green 'Login' button. At the bottom, there is a link that says 'New User?Join in'.

2. Press  on the device for 5 seconds. The red and green indicators flash 3 times together and then switch off. It indicates that the device is turned on
3. Tap  on the home page to enter the add devices page;
4. Tap  to scan the product QR code or manually enter the product serial number below the QR code on the logger.

Parameters Configuration:

1. After scanning successfully, you will enter the following configuration page. Then you can configure parameters according to your need:



The image shows the 'Configuration' page of the FreshLance app. It has a green header with a back arrow and the title 'Configuration'. Below the header are several input fields: 'Name' (with a plus icon), 'Description' (with a list icon), 'Version' (with an info icon), 'Sampling Interval' (with a clock icon), 'Start Delay' (with a clock icon), and 'Temperature Alarm Range' (with a thermometer icon). Each field has a placeholder text: 'Please enter the device name', 'Please enter Description', '1.6.3', '1min >', '0hour0min >', and '2°C - 9°C >'. At the bottom, there is a green 'Confirm' button.



2. After configuration, tap confirm. It will go to the home page automatically.

Note: The longer the sampling interval, the more power saving. After configuration, other configuration items cannot be modified except Name.

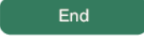
Check Real-time Data:

1. When the device is placed next to the mobile phone, the real-time data can be viewed on the home page. If the real-time data is displayed as “—”, it means that the device has not been searched and needs to wait for a few seconds.
2. If the temperature is out of the alarm range, the temperature will be displayed in red. So is the humidity.

Read Historical Data:

On the home page, tap  to enter detail page to view the historical data. When the device is next to the mobile phone, tap  to get the latest data from the device.

Stop the device:

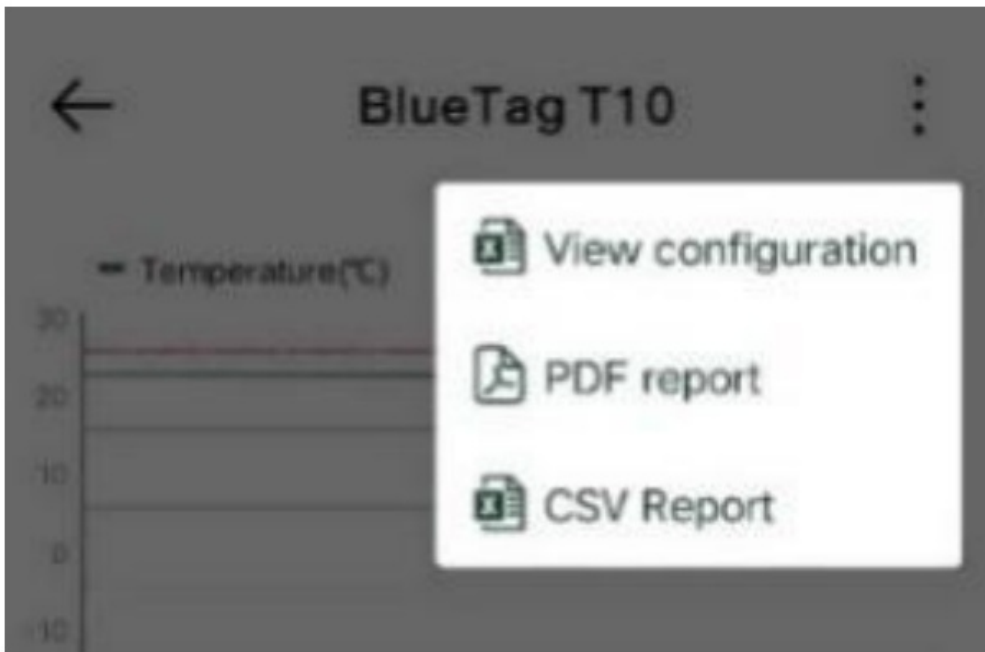
Tap  at the bottom on the detail page to stop the logger.

Note: Once it's ended, the device will display  on the APP. The APP will not record any more and only shows real time data.

If it's new mobile to stop the device, please download the APP and register first. Then add the device and operate accordingly.

Export Report:

After the device is ended on APP, tap  to export PDF and CSV report.



Device List:

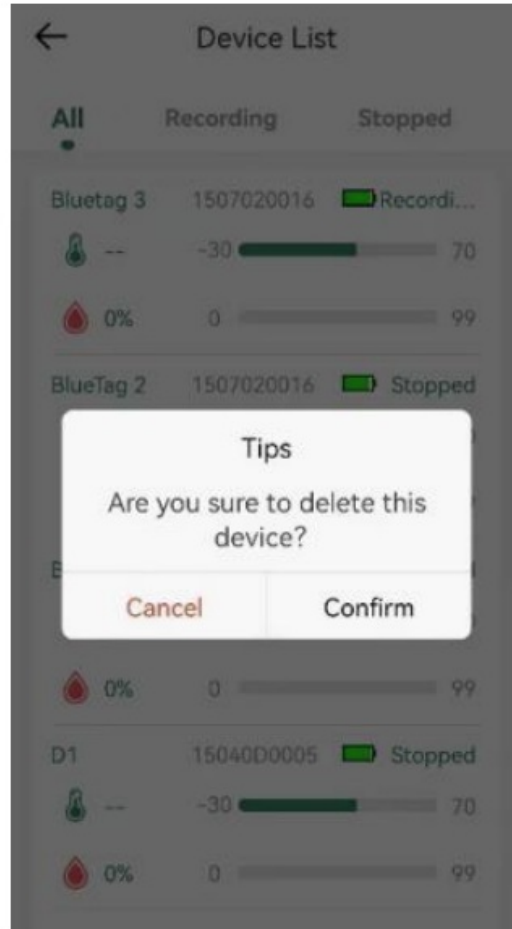
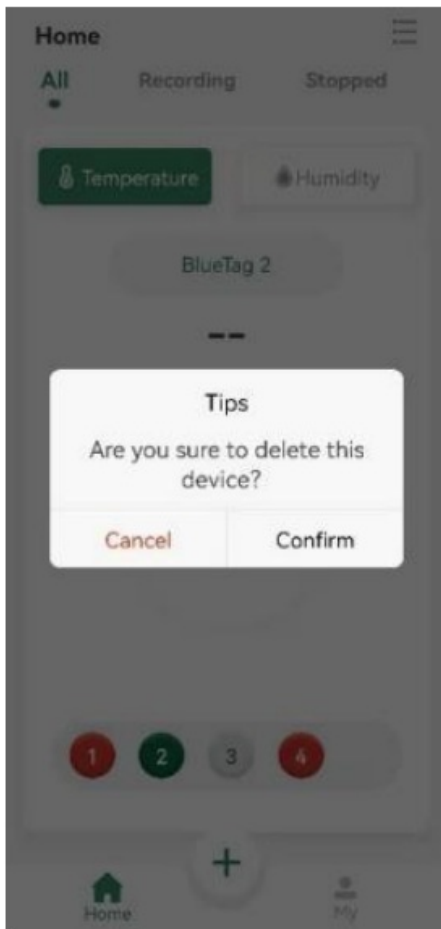
On the home page, tap  to enter Device List page.




- ① All devices
- ② Working devices
- ③ Stopped devices
- ④ Device name
- ⑤ Serial number
- ⑥ Battery level
- ⑦ Device status
- ⑧ Latest data
- ⑨ Temperature range
- ⑩ Humidity range

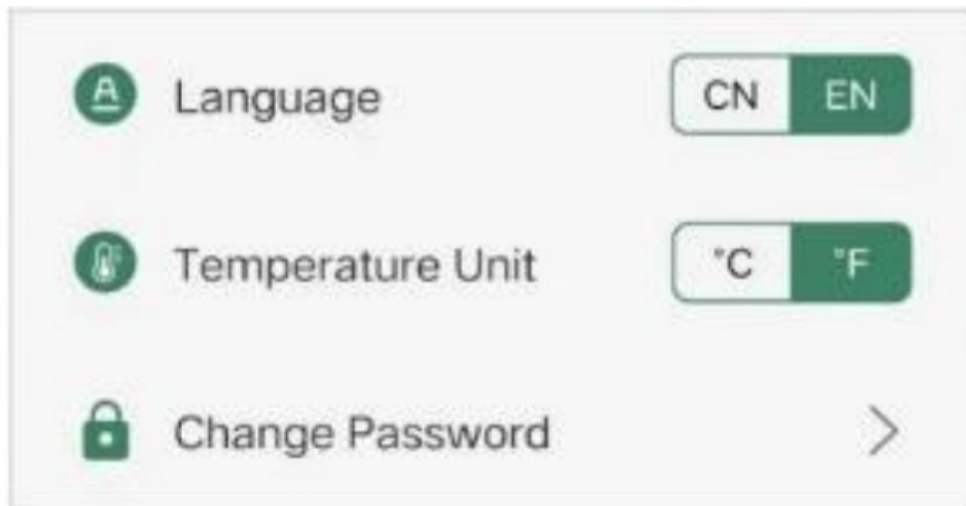
Delete Device:

On the home page or Device List page, long press the device to delete the device.



APP Settings

On the home page, tap  to modify the APP language, temperature unit and login password etc.



Parameter:

Model	Blue Tag T10/TH10	Start delay	Configurable
Memory capacity	Max. 65000 readings	Recording interval	Configurable
Temperature range	-30°C~+70°C	Alarming range	Configurable
Humidity range	0% – 99%	APP language	English, Chinese
Temperature unit	°C, °F	APP operating system	Android
Accuracy	±0.5°C Temperature ±3% Humidity	Wireless connection	Bluetooth 5.0
Resolution	0.1°C Temperature 1% Humidity	Protection degree	IP67 Blue Tag T10 IP65 Blue Tag TH10
Battery	CR2032 Lithium battery	Standard	CE, RoHS, EN12830
Report format	PDF & CSV	Installation	3M adhesive tape
Shelf life	1 year	Working time	1 year
Size	48mm * 31mm * 5mm	Weight	7.8g

FCC Warning Statement

Changes or modifications not expressly approved by the party responsible for compliance could void the user's authority to operate the equipment. This equipment has been tested and found to comply with the limits for a Class B digital device, pursuant to Part 15 of the FCC Rules. These limits are designed to provide reasonable protection against harmful interference in a residential installation. This equipment generates uses and can radiate radio frequency energy and, if not installed and used in accordance with the instructions, may cause harmful interference to radio communications. However, there is no guarantee that interference will not occur in a particular installation. If this equipment does cause harmful interference to radio or television reception, which can be determined by turning the equipment off and on, the user is encouraged to try to correct the interference by one or more of the following measures:

- Reorient or relocate the receiving antenna.
- Increase the separation between the equipment and receiver.

- Connect the equipment into an outlet on a circuit different from that to which the receiver is connected.
- Consult the dealer or an experienced radio/TV technician for help.

Thanks for your purchasing, once you need any special request based on our general product, like OEM orders, higher testing accuracy, configurable setting, PDF and CSV output, special design for your private label. Please contact us:

T: 0086-371 -89908620

E: sales@freshliance.com

www.freshliance.com

www.temlogger.com

www.facebook.com/FreshLianee.cn




This device complies with part 15 of the FCC Rules. Operation is subject to the following two conditions: (1) this device may not cause harmful interference, and (2) this device must accept any interference received, including interference that may cause undesired operation. Any changes or modifications not expressly approved by the party responsible for compliance could void the user's authority to operate the equipment. NOTE: This equipment has been tested and found to comply with the limits for a Class B digital device, pursuant to Part 15 of the FCC Rules. These limits are designed to provide reasonable protection against harmful interference in a residential installation. This equipment generates, uses and can radiate radio frequency energy and, if not installed and used in accordance with the instructions, may cause harmful interference to radio communications. However, there is no guarantee that interference will not occur in a particular installation. If this equipment does cause harmful interference to radio or television reception, which can be determined by turning the equipment off and on, the user is encouraged to try to correct the interference by one or more of the following measures:

- Reorient or relocate the receiving antenna.
- Increase the separation between the equipment and receiver.
- Connect the equipment into an outlet on a circuit different from that to which the receiver is connected.
- Consult the dealer or an experienced radio/TV technician for help.

The device has been evaluated to meet general RF exposure requirement. The device can be used in portable exposure condition without restriction

Documents / Resources

	<p>FRESHLIANCE BlueTag T10/TH10 Bluetooth Temperature Data Loggers [pdf] User Manual V10, 2A7SD-V10, 2A7SDV10, BlueTag T10, BlueTag TH10, BlueTag Bluetooth Temperature Data Loggers, BlueTag T10 Bluetooth Temperature Data Loggers, BlueTag TH10 Bluetooth Temperature Data Loggers, Temperature Data Loggers, Data Loggers, Loggers, Bluetooth Temperature Data Loggers</p>
---	---

References

-  freshliance.com/T-keeper.html

Manuals+.