



FREAKS GEEKS GG04 Polychroma Wireless Controller For Switch and Switch OLED User Manual

[Home](#) » [FREAKS GEEKS](#) » FREAKS GEEKS GG04 Polychroma Wireless Controller For Switch and Switch OLED User Manual 



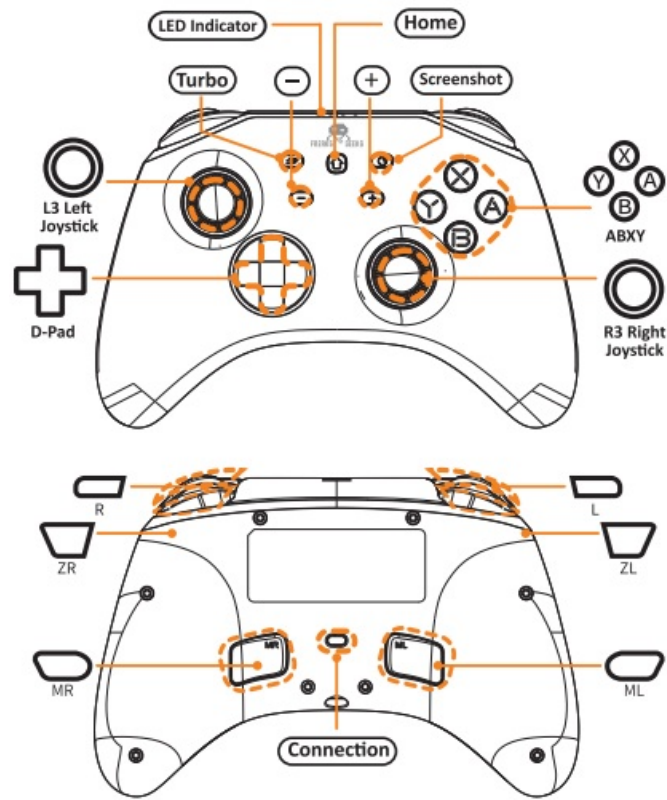
User manual

polychroma wireless controller for switch and switch oled

Contents

- [1 Product Overview](#)
- [2 Technical Specifications](#)
- [3 Package](#)
- [4 FUNCTIONS COMPARISON](#)
- [5 CHARGING INSTRUCTIONS](#)
- [6 Documents / Resources](#)
 - [6.1 References](#)

Product Overview



Technical Specifications

Input Voltage: 5V, 350mA
 Working Voltage: 3.7V
 Battery Capacity: 600mAh
 Product Size: 154*59*111mm
 Product Weight: 250±10g
 Product Material: ABS

Package

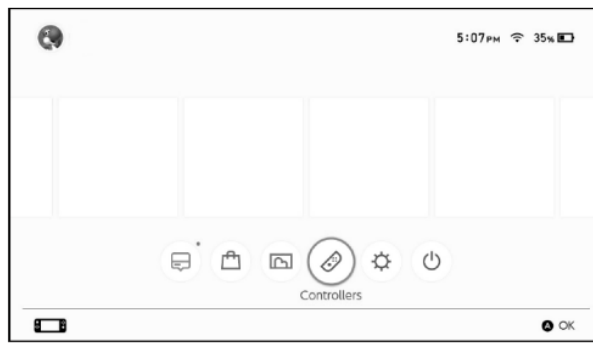
1 x Gamepad
 1 x User Manual
 1 x Type-C Charging Cable
 1 x User Manual
 1 x Type-C Charging Cable
 1 x User Manual

Wireless Connection

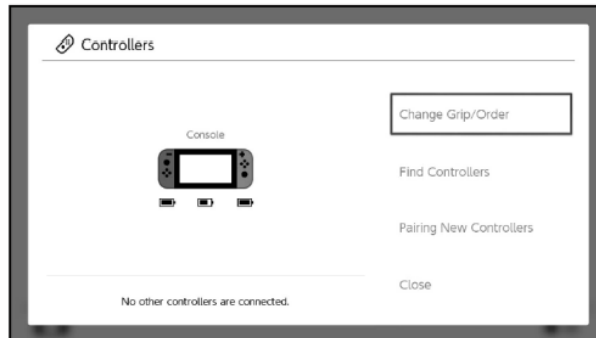
Please Note: Please make sure that airplane mode on the console is turned off before use

First-Time Pairing:

Step 1: Find Controllers Option



Step 2: Click Change Grip/Order



Step 3: Press the SYNC Button (on the back of the controller) for about 5 seconds, until the 4 Led lights flash quickly, then release your finger and wait for the connection to complete.



* **NOTE:** Enter the Change Grip/Order page, please complete the connection within 30 seconds as soon as possible. If you stay on this page for too long, you may not be able to connect to the switch console

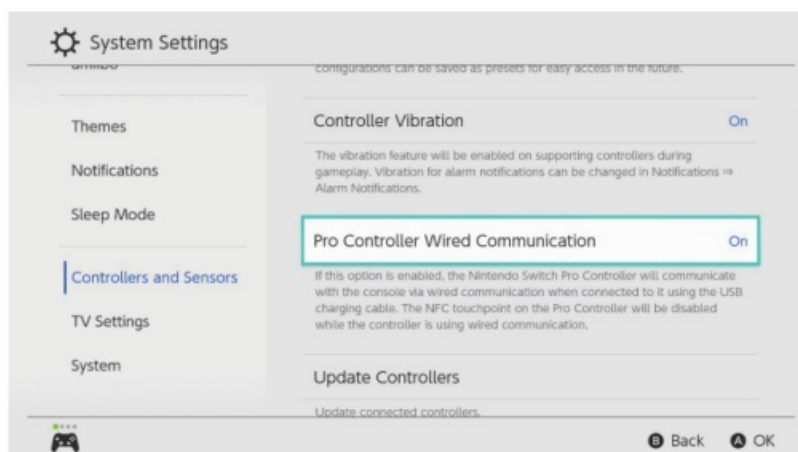
Console Wake Up and Wireless Re-connection
Once the controller has paired with the console:

- If the console is in SLEEP mode, the HOME button on the controller is able to wake up both the controller and the console.
- If the console screen is on, any button can wake up the controller, which will allow the controller to reconnect to the console.
- If re-connection failed, please follow the three steps:
 1. Turn off Airplane mode on the console
 2. Remove the controller's information on the NS console (System Setting> Controllers and Sensors> Disconnect Controllers)
 3. Follow the steps in First-Time Pairing

Wired Connection

1. Turn on the «Pro Controller Wired Communication» in the console: System Settings > Controllers and Sensors > Pro Controller Wired Communication > On

Please Note: The «Pro Controller Wired Communication» must be turned on before connecting the controller and the Dock with the cable.



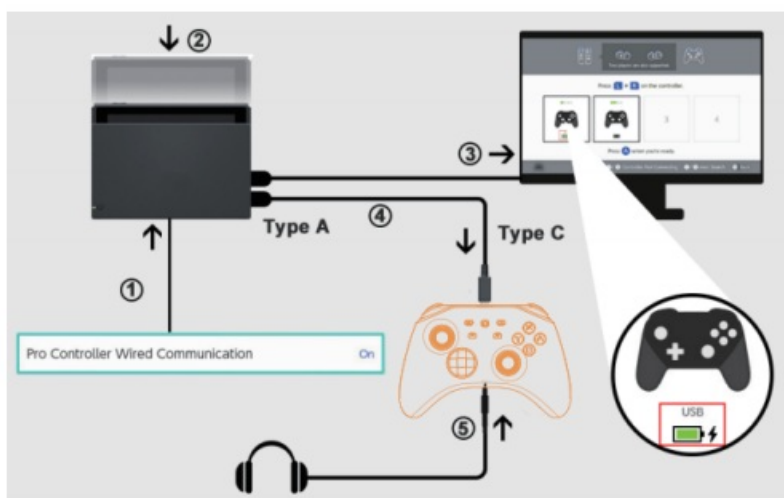
2. Set the Switch on the dock to activate TV mode. Connect the Switch Dock and the controller directly via the USB Type C cable.

Audio Function

The controller has a 3.5mm audio port, supports 3.5mm wired headset and microphone.

Please note: The audio function will ONLY work in Wired Connection Mode with a NS console.

It will not work in wireless connection or PC platform.



Please Note: The “Pro Controller Wired Communication” must be turned on BEFORE connecting the controller and the Dock with the cable.

1. System settings > Controllers and Sensors > Pro Controller Wired Communication > On
2. Set the Switch console on the dock to TV mode.
3. Connect the Switch Dock and the controller with the USB cable.
4. The icon with -USB- displayed indicates the wired connection is successful.
5. Plug the 3.5mm audio jack into the audio port on the bottom of the controller.

TURBO AND AUTO-FIRE

Buttons Available to Set the Turbo Function: A/B/X/NUZUR/ZR button

Enable/disable the manual and auto turbo speed function:

Step1: Press the TURBO button and one of the function button simultaneously. to enable the manual turbo speed function.

Step2: Repeat the step 1. to enable the auto turbo speed function

Step3: Repeat the step 1 again, to disable the manual and auto turbo speed function of this button.

There are 3 levels of turbo speed: Minimum 5 shoots per-second. the corresponding channel light flash slowly. Moderate 12 shoots per-second, the corresponding channel light flash at a moderate rate. Maximum 20 shoots per-second, the corresponding channel light flash quickly. How to increase the turbo speed: When the manual turbo function is on, upward the right joystick meanwhile press and hold the TURBO button, which can increase one level of turbo speed. How to decrease the turbo speed: When the manual turbo function is on, downward the right joystick meanwhile press and hold the TURBO button, which can decrease one level of turbo speed. Turn off all the turbo functions for all buttons: Press and hold the Turbo button for 6 seconds until the controller vibrates, which will turn off the turbo functions of all buttons.

ADJUST VIBRATION INTENSITY

There are 4 levels of vibration intensity: 100%-70%-30%-0%(no vibration) How to increase the vibration intensity: upward the left joystick meanwhile press the TURBO button, which can increase one level of vibration intensity. How to decrease the vibration intensity: downward the left joystick meanwhile press the TURBO button, which can decrease one level of vibration intensity.

MACRO FUNCTION

There are two macro-enabled programmable buttons A1UMR. on the back of the controller. Macro buttons can be programmed into function buttons or button sequences respectively. Macro Buttons Can Be Programmed to: A/B/XN/L/ZURTZR/up/down/left/right buttons. The default mapping buttons of ML&MR are A&B. Enter the Macro Definition Mode and Set Up the Button(s):

1. Press and hold the -Turbo. + -ML. / -MR. together for 2 seconds. LED2-LED3 will stay lighting. The controller is ready to record the macro setting.
2. Press the function buttons that need to be set sequentially, the controller will record the button with the time interval between each button pressed.
3. Press macro button ML or MR shortly to save, the corresponding player LED light will stay lighting. The macro definition setting has been saved. When the controller re-connects to the console, it will automatically apply the last macro definition setting. Clear the Macro Definition Settings: Press the -Turbo. + AIL-/"MR- together for 2 seconds to enter settings mode, the LED2- LED3 will stay lit, then directly exit setting mode by pressing the same ML/MR buttons. The corresponding player LED will light up again. The macro definition setting within the current slot will be removed.

ROB LIGHTS ON/OFF

Turn on/off ABXY button lights: Hold down the .1.+R» together for 6 seconds Turn on/off Joystick lights: Hold down the -21.+ZR. together for 6 seconds

ROB BRIGHTNESS SETTINGS

Hold the — then press the Up of the D-Pad to increase the light brightness Hold the — then press the Down of the D-Pad to decrease the light brightness

COLOR BREATHING MODE

The color automatically breathes and changes every second following the color breathing sequence: Green>Yellow>Red> Purple>Blue>Cyan>Warm White (for Touro) or Cool White (for Zero-Kirin)

SINGLE COLOR MODE

Steady single color: Hold the -+- then press the Right of D-pad to switch to the next steady color within the Single Color Mode.

JOYSTICK OPERATION ROB MODE

Hold the— then press the Lett of D-pad to enter the Joystick Operation RGB Mode, the joystick RGB lights will light up following the moving direction of the joystick and will be off if the joystick has no movements. The RGB Color Mode is still adjustable when the Joystick Operation RGB Mode is on. Please make sure the Joystick lights are active before trying to enter the Joystick Operation RGB Mode (Hold down the «ZL+ZR. together for 6 seconds to switch on/off the joystick lights)

CONNECT WITH WINDOWS PC PC

Xbox Wired Connection (X-INPUT) Connect the controller to a Windows system computer with a USB cable, it will automatically be recognized as -Xbox 360. mode. The first and the fourth LED lights (LED1 and LED4) will have a

steady light and they will flash when the controller is charging.

PC Xbox Wireless Connection Press the -Sync. and -X- buttons together for 3 seconds. the first and fourth lights (LED1 and LED4) will flash. Turn on your PC's Bluetooth and select the device: Xbox Wireless Controller. The first and the fourth lights (LED1 and LED4) will have a steady light after a successful connection. Please Note: In the Xbox mode, button -A" becomes -B., <43- becomes A., <4(. becomes 01-, and -Y. becomes X.

STEAM XBOX MODE CONNECTION

We can connect with the STEAM platform via Xbox wired and wireless modes above.

STEAM SWITCH PRO CONTROLLER WIRED CONNECTION

1. Press down the right joystick vertically and connect the controller to the computer with the USB cable. The first LED (LED1) will have a steady light and it will flash when the controller is charging.

(Note: Please press the joystick vertically when plugging in the USB cable to avoid causing the joystick drifting issue; In case of the drifting, please try moving the joysticks in circle to let it reconcile) 2. It will be recognized on Steam as a Pro controller and can be used for supported games.

STEAM SWITCH PRO CONTROLLER MODE WIRELESS CONNECTION

1. Press the <,Sync« pairing button and the four lights will all flash in turn.
2. Turn on your PC's Bluetooth and select the device -Pro Controller-.
3. The first LED (LED1) will have a steady light after a successful connection.

CONNECT WITH IOS DEVICES

Compatible with IOS 13.4 above devices Press the -Sync. and \$1. buttons together for 3 seconds, and the first and fourth lights (LED1 and LED4) will flash.

Turn on your Mobile's Bluetooth and select the device: Xbox Wireless Controller. The first and the fourth LEDs will have a steady light after the successful connection.

CONNECT WITH ANDROID DEVICES

*Compatible with Android 10.0 above devices Press the Sync and Y buttons together for 3 seconds, and the second and third lights (LED 2 and LED3) will flash. Turn on your Mobile's Bluetooth and select the device: Xbox Wireless Controller. The second and third LED lights (LED 2 and LED3) will have a steady light after the successful connection.

FUNCTIONS COMPARISON

Platform	Screenshot	Audio Function	Motion	Vibration	Macro	Turbo
Switch Wireless	✓	X	✓	✓	✓	✓
Switch Wired					✓	✓
PC Xbox (X-INPUT1				✓	✓	✓
PC STEAM (Pro Control,				✓	✓	✓
Android Illettnx4.101)				✓	✓	✓
iOS Xbox Nit CoNsollw)	X	X	X	✓	✓	✓

CHARGING INSTRUCTIONS

The controller can be charged using the Switch charger, the Switch Dock, 5V 2A power adapter, or USB power supplies with the USB Type C to A cable.

- If the controller is connected with the console while charging, the corresponding channel LED light(s) on the controller will flash. The channel LED light(s) will stay lit if the controller has been fully charged.
- If the controller is not connected with the console while charging, the 4 LED lights will flash. The LED lights will go off when the controller has been fully charged. When the battery is low, the corresponding channel LED light(s) will flash; the controller will turn off and need to be charged if the battery is exhausted.

WARNING

- Use only the supplied charging cable to charge this product.
- If you hear a suspicious sound, smoke, or a strange smell, stop using this product
- Do not expose this product or the battery it contains to microwaves, high temperatures, or direct sunlight.
- Do not let this product come in contact with liquids or handle it with wet or greasy hands. If liquid gets inside, stop using this product
- Do not subject this product or the battery it contains to excessive force. Do not pull on the cable or bend it sharply.
- Do not touch this product while it is charging during a thunderstorm.
- Keep this product and its packaging out of reach of young children. Packaging elements could be ingested. The cable could wrap around children's necks.
- People with injuries or problems with fingers, hands or arms should not use the vibration function
- Do not attempt to disassemble or repair this product or the battery pack. If either is damaged, stop using the product.
- If the product is dirty, wipe it with a soft, dry cloth. Avoid the use of thinner, benzene or alcohol.

REGULATORY INFORMATION



Disposal of used batteries and waste electrical and electronic equipment This symbol on the product, its batteries or its packaging indicates that the product and the batteries it contains must not be disposed of with household waste. It is your responsibility to dispose of them at an appropriate collection point for the recycling of batteries and electrical and electronic equipment. Separate collection and recycling help to preserve natural resources and avoid potential negative effects on human health and the environment due to the possible presence of hazardous substances in batteries and electrical or electronic equipment, which could be caused by incorrect disposal. For more information on the disposal of batteries and electrical and electronic waste, contact your local authority, your household waste collection service or the shop where you purchased this product. This product can use lithium, NiMH or alkaline batteries.

Simplified European Union Declaration of Conformity : Trade Invaders hereby declares that this product complies with the essential requirements and other provisions of Directive 2014/30/EU.

The full text of the European Declaration of Conformity is available on our website www.freaksandgeeks.fr


Company. Trade Invaders SAS. Address: 28, Avenue Ricardo Mana Saint-Thibery, 34630 Country:

France Telephone number: +33 4 67 00 23 51

The operating radio frequency bands of the 0004 and the corresponding maximum power are as follows: 2.402 to 2.480 GHz, MAXIMUM : < 10 dBm (EIRP)



Documents / Resources

	<p>FREAKS GEEKS GG04 Polychroma Wireless Controller For Switch and Switch OLED [pdf] User Manual</p> <p>GG04 Polychroma Wireless Controller For Switch and Switch OLED, GG04, Polychroma Wireless Controller For Switch and Switch OLED, Wireless Controller For Switch and Switch OLED, Controller For Switch and Switch OLED, Switch and Switch OLED, Switch OLED</p>
---	---

References

-  [Accueil - Freaks and Geeks](#)
- [User Manual](#)

[Manuals+.](#) [Privacy Policy](#)

This website is an independent publication and is neither affiliated with nor endorsed by any of the trademark owners. The "Bluetooth®" word mark and logos are registered trademarks owned by Bluetooth SIG, Inc. The "Wi-Fi®" word mark and logos are registered trademarks owned by the Wi-Fi Alliance. Any use of these marks on this website does not imply any affiliation with or endorsement.