



## FREAKS AND GEEKS Controller Left for Switch User Manual

[Home](#) » [FREAKS AND GEEKS](#) » FREAKS AND GEEKS Controller Left for Switch User Manual 

### Contents

- 1 FREAKS AND GEEKS Controller Left for Switch
- 2 Getting Started
- 3 PRODUCT DESCRIPTION
- 4 HOW TO DIFFERENTIATE CONTROLLERS
- 5 HOW TO CHARGE THE CONTROLLER
- 6 FIRST CONNECTION
- 7 HOW TO CONNECT
- 8 HOW TO RECONNECT
- 9 SPECIFICATIONS
- 10 STAND-BY
- 11 WARNING
- 12 SOFTWARE UPDATE
- 13 Documents / Resources
  - 13.1 References
- 14 Related Posts



FREAKS AND GEEKS Controller Left for Switch

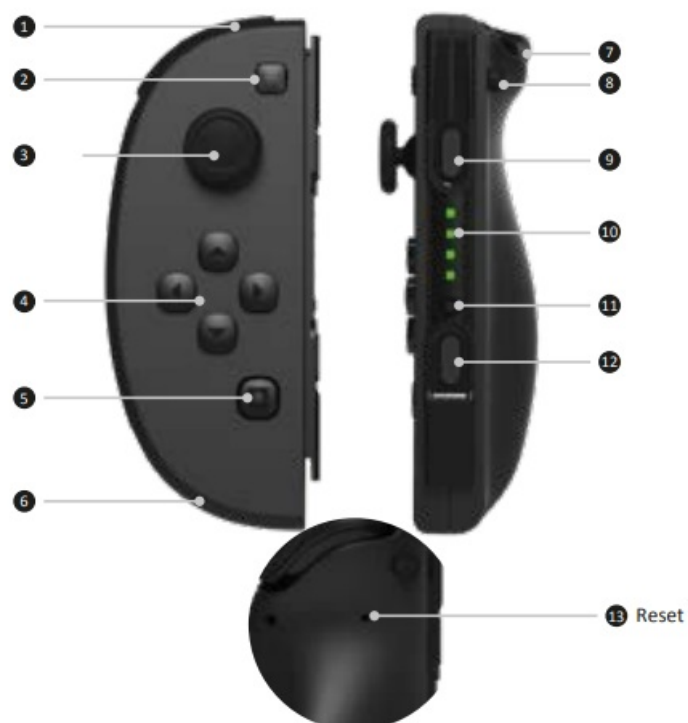


CONTROLLER left for Switch

## Getting Started

Make sure you read this guide, before using the Controller. Reading this guide will help you learn to use the Controller properly. Store this guide safely so that you can use it in the future.

## PRODUCT DESCRIPTION



1. L button

2. button

3. Left stick
4. Directional Buttons
5. Screenshot
6. Charging port
7. ZL button
8. Release button
9. SL button
10. LED player indicators
11. Mode button
12. SR button

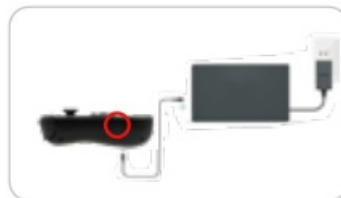
## HOW TO DIFFERENTIATE CONTROLLERS

The controller on the left has a – button at the top right, the controller on the right has a + button at the top left.



## HOW TO CHARGE THE CONTROLLER

- **USB charging-only:**
- Connect the controllers to the type-C cable. The 4 LEDs flash slowly during charging. When charging is complete, all 4 LEDs remain off.
- When the controllers are charging, make sure not to connect them to the console to avoid damage



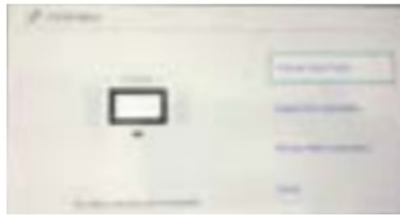
## FIRST CONNECTION

1. Console settings: the Bluetooth connection must be enabled Turn on the console, go to the “Console Settings” menu, then select “Flight Mode” and make sure it is set to Off and that “Communication with controllers (Bluetooth)” is enabled, otherwise set it to On.



## 2. Connecting to the console

- In the “Home” menu, select “Controllers” and then “Change grip/order”.
- Press and hold the Mode button (11) on the left or right controller for 3 seconds.
- The LED flashes rapidly and switches to Bluetooth sync mode. As soon as both controllers appear on the screen, follow the instructions on the screen. Your controllers are now synchronized and working on your console.



## HOW TO CONNECT

### Handheld mode

Slide the controller's own until making a sound, ensuring that it's correctly oriented and inserted all the way.



### Clips Mode



## HOW TO RECONNECT

### ACTIVATION :

1. To activate the controllers press UP / DOWN / LEFT / RIGHT on the left controller and A / B / X / Y on the right controller. Once connected, the LEDs remain steady.

**DISABLING:** To deactivate the controllers press and hold the MODE button (11) for 3 seconds.

## SPECIFICATIONS

- **Battery:** Built-in polymer lithium battery
- **Battery capacity:** 300mA
- **Battery using time:** About 6,8 hours
- **Charging time:** About 2,3 hours
- **Charging method:** USB DC 5V
- **Charging current:** 300 mA
- **Charging port:** Type-C
- **vibration function:** Supports double motor

## STAND-BY

- Controllers are automatically set to Stand-by mode if they do not detect compatible devices during the connection procedure and if not in use for 5 minutes.

## WARNING

- Use only the supplied type-C charging cable to charge this product.
- If you hear a suspicious sound, smoke, or a strange smell, stop using this product.
- Do not expose this product or the battery it contains to microwaves, high temperatures, or direct sunlight.
- Do not let this product come in contact with liquids or handle it with wet or greasy hands. If liquid gets inside, stop using this product
- Do not subject this product or the battery it contains to excessive force. Do not pull on the cable or bend it sharply.
- Do not touch this product while it is charging during a thunderstorm.
- Keep this product and its packaging out of reach of young children. Packaging elements could be ingested. The cable could wrap around children's necks.
- People with injuries or problems with fingers, hands or arms should not use the vibration function
- Do not attempt to disassemble or repair this product or the battery pack. If either is damaged, stop using the product.
- If the product is dirty, wipe it with a soft, dry cloth. Avoid the use of thinner, benzene or alcohol

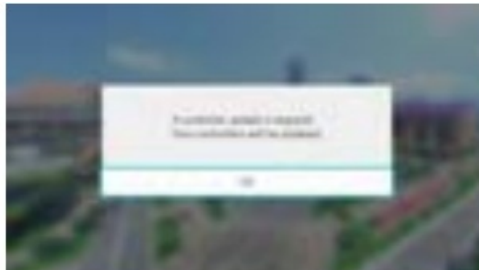
## SOFTWARE UPDATE

- If Nintendo updates the system in the future, your controllers should need an update. Go to [www.freaksandgeeks.fr](http://www.freaksandgeeks.fr) and follow the instructions.
- If your controller works well, DO NOT update your controller, which may be causing the controller's system

confusion.

### Only with the Switch Sports game:

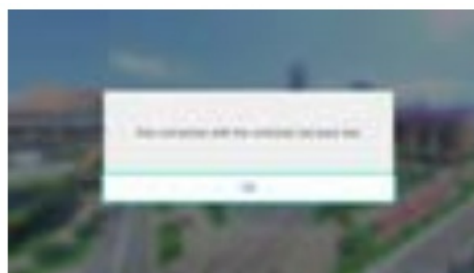
1. connect the joycon and the Switch
2. launch the Switch Sports game
3. select a sport
4. the console displays that the joycon needs an update. Click on ok



5. An update starts and the joycon interrupts the update and reconnects




6. Click ok, the joycon is ready to play



**Note:** The Switch Sports game contains 6 mini-games, when you change the mini-game, you will have to repeat this operation.

### Documents / Resources

	<a href="#">FREAKS AND GEEKS Controller Left for Switch</a> [pdf] User Manual Controller Left for Switch, Controller Left, Controller Switch, Controller
---	---

### References

- [Accueil - Freaks and Geeks](#)