



FREAKS AND GEEKS 299178e Joycon Neon Colors Instruction Manual

[Home](#) » [FREAKS AND GEEKS](#) » FREAKS AND GEEKS 299178e Joycon Neon Colors Instruction Manual 



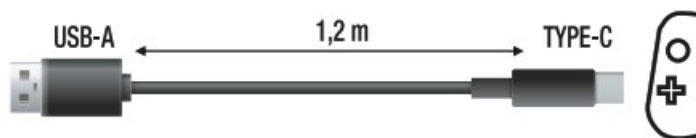
PRO DUO CONTROLLERS PACK for Switch Instruction Manual

Contents

- 1 Getting Started
- 2 PRODUCT DESCRIPTION
- 3 HOW TO CONNECT WIRELESSLY?
- 4 HOW TO CONNECT THE CONTROLLER?
- 5 HOW TO RECONNECT
- 6 HOW TO CHARGE THE CONTROLLER ?
- 7 STAND-BY
- 8 RESET
- 9 SENSOR CALIBRATION
- 10 3D CALIBRATION
- 11 SPECIFICATIONS
- 12 LED
- 13 HOW TO TURN OFF CONTROLLERS?
- 14 SOFTWARE UPDATE
- 15 Documents / Resources
 - 15.1 References
- 16 Related Posts

Getting Started

- Make sure you read this guide, before using the Controller.
- Reading this guide will help you learn to use the Controller properly.
- Store this guide safely so that you can use it in the future.



PRODUCT DESCRIPTION

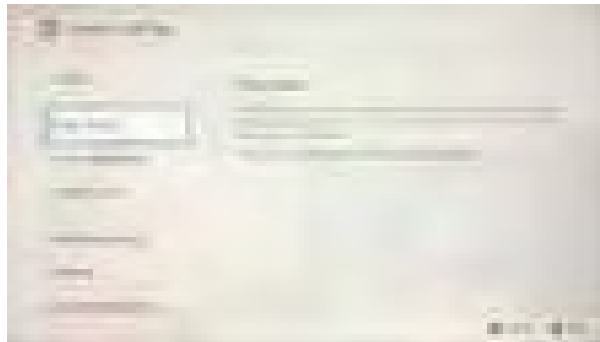


1. Screenshot button 2. Directional Buttons 3. Left S tick 4. – Button 5. L Button 6. LED player indicators 7. R Button	8. + Button 9. A/B/X/YB buttons 10. Right Stick 11. HOME Button 12. ZL Button 13. Release Button 14. Release Button	15. ZR Button 16. SL Button 17. Mode Button 18. SR Button 19. SR Button 20. SL Button 21. Charing Port
---	---	--

HOW TO CONNECT WIRELESSLY?

1. Console settings: the Bluetooth connection must be enabled

Turn on the console, go to the “Console Settings” menu, then select “Flight Mode” and make sure it is set to Off and that “Communication with controllers (Bluetooth)” is enabled, otherwise set it to On.



2. Connecting to the console

-In the “Home” menu, select “Controllers” and then “Change grip/order”.

Press and hold the Mode button (17) on the left or right controller for 3 seconds.

The LED flashes rapidly and switches to Bluetooth sync mode. As soon as both controllers appear on the screen, follow the instructions on the screen.

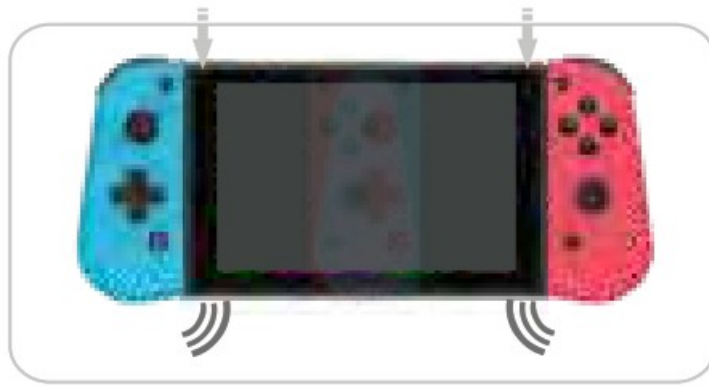
Your controllers are now synchronized and working on your console.



HOW TO CONNECT THE CONTROLLER?

Handheld mode

Slide the controller own until it make a sound, ensuring that it is correctly oriented and inserted all the way.



Grip mode



HOW TO RECONNECT

ACTIVATION:

1. To activate the controllers press UP / DOWN / LEFT / RIGHT on the left controller and A / B / X / Y on the right controller. The LEDs flash slowly in circular mode.
2. Press the "MODE" button for 3 seconds to access the connection mode and release when the LEDs flash faster.

Once connected, the LEDs remain steady.

DISABLING: To deactivate the controllers press and hold the MODE button for 3 seconds.

HOW TO CHARGE THE CONTROLLER ?

USB charging only:

Connect the controllers to a Type-C cable. The 4 LEDs flash slowly during charging. When charging is complete, all 4 LEDs remain off.

When the controllers are charging, make sure not to connect them to the console to avoid damage.



STAND-BY

Controllers automatically set to Stand-by mode if they do not detect compatible devices during the connection procedure and if not in use for 5 minutes.

RESET

If abnormal operation is noted, if the controller does not respond to commands, automatic crashes and other causes, a Reset can be performed. To short press the “MODE” button (17).

SENSOR CALIBRATION

The controller is connected to the Switch console, go to the “Console Settings “menu, select “controller and sensor”, then select ” sensor calibration ” , follow the instructions on the screen.

3D CALIBRATION

The controller is connected to the Switch console, go to the “Console Settings “menu, select “controller and sensor”, then select ” 3D calibration ” , follow the instructions on the screen.

SPECIFICATIONS

Battery	Built-in polymer lithium battery
Battery capacity	350mA
Battery using time	About 4,6 hours
Charging time	About 2,5 hours
Charging method	USB DC 5V
Charging current	< 300mA
Charging port	TYPE C
vibration function	Supports double motor

LED

When the gamepad is off, press UP / DOWN / LEFT / RIGHT on the left gamepad and A/B/X/Y on the right gamepad to activate.

- Press the “MODE” button for 3 seconds, the 4 LEDs flash quickly. Following the connection, the LEDs remain fixed.
- When the battery is almost flat, the LEDs flash slowly and with a low battery the gamepads turn off automatically.
- If the console’s Bluetooth connection is interrupted or if in standby mode, the gamepads automatically turn off.
- The console allows the connection of 7 gamepads simultaneously. Each LED indicates the relative connection channel. LED1 lit indicates connection to the first channel, LED1 + LED2 indicate connection to the second channel, LED1 + LED2 + LED3 indicate the connection to the third channel and LED1 + LED2 + LED3 + LED4

to the fourth channel. ¢ The usage time is about 10 hours in vibration mode and about 20 hours in inactive vibration mode.

HOW TO TURN OFF CONTROLLERS?

1. When controller is connecting with Switch console, by holding down the POWER Button to Power Off the Console, controller will power off as well.
2. When controllers turned on, disconnected with console, by pressing [Power-off Button] Jat side of controller to turn it off.

WARNING

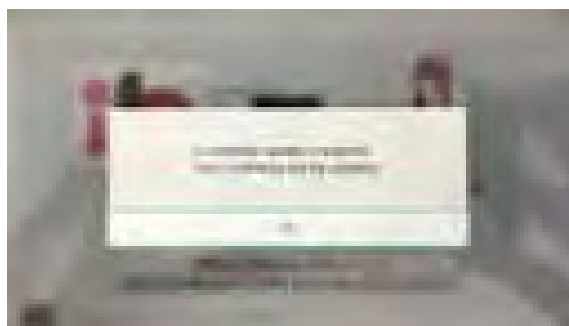
- Use only the supplied charging cable to charge this product.
- If you hear a suspicious sound, smoke, or a strange smell, stop using this product.
- Do not expose this product or the battery it contains to microwaves, high temperatures, or direct sunlight.
- Do not let this product come in contact with liquids or handle it with wet or greasy hands. If liquid gets inside, stop using this product
- Do not subject this product or the battery it contains to excessive force. Do not pull on the cable or bend it sharply.
- Do not touch this product while it is charging during a thunderstorm.
- Keep this product and its packaging out of reach of young children. Packaging elements could be ingested. The cable could wrap around children's necks.
- People with injuries or problems with fingers, hands or arms should not use the vibration function
- Do not attempt to disassemble or repair this product or the battery pack. If either is damaged, stop using the product.
- If the product is dirty, wipe it with a soft, dry cloth. Avoid the use of thinner, benzene or alcohol.

SOFTWARE UPDATE

If Nintendo updates the system in future, your controllers should need an update. Go to www.freaksandgeeks.fr and follow instructions. If your controller work well, DO NOT update your controller, which maybe cause controller's system confusion.

Only with the game Switch Sports :

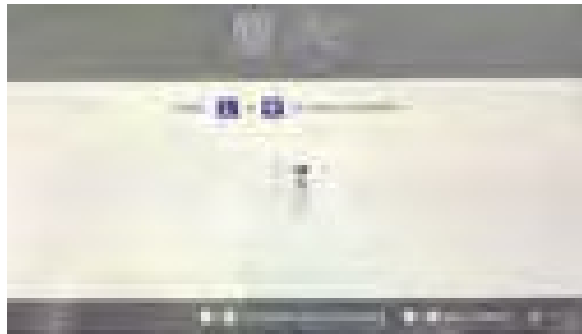
1. When launching the Switch Sports game, when the controller update is requested, click OK.



2. A message announces that the controller connection has been lost, click OK. You can resume your game.



3. Reconnect your controllers by holding L+R. You can start your game.



Note: The Switch Sports game contains 6 mini games, when you change the mini game, you will have to repeat this operation.

Documents / Resources

	FREAKS AND GEEKS 299178e Joycon Neon Colors [pdf] Instruction Manual 299178e Joycon Neon Colors, 299178e, Joycon Neon Colors, Neon Colors, Colors
--	--

References

- [User Manual](#)