



FRAMEZ DB15  
Topfix  
Window  
Frame



# FRAMEZ DB15 Topfix Window Frame Installation Guide

[Home](#) » [FRAMEZ](#) » FRAMEZ DB15 Topfix Window Frame Installation Guide 

## Contents

- [1 FRAMEZ DB15 Topfix Window Frame](#)
- [2 Product Usage Instructions](#)
- [3 TYPE DB10 / DB15 topfix](#)
- [4 TYPE DB10 / DB15 window frame / wall](#)
- [5 Documents / Resources](#)
  - [5.1 References](#)
- [6 Related Posts](#)



**FRAMEZ DB15 Topfix Window Frame**



## Product Specifications

- **Product Type:** DB10 / DB15
- **Installation Type:** Topfix / Window frame / Wall
- **Product Width Range:**
  - 0 – 80 cm: 2 parts
  - 81 – 150 cm: 3 parts
- **Maximum Height:** 70 cm
- **X Dimension:** 5 cm

## Product Usage Instructions

### Installation for Topfix

1. Clip installation
2. Installation sequence
3. Rail installation sequence on Clips 3-A1 and 3-A2
4. Footplate installation 2
5. 10 mm
6. Rail installation sequence on Clips 3-B/C1 and 3-B/C2

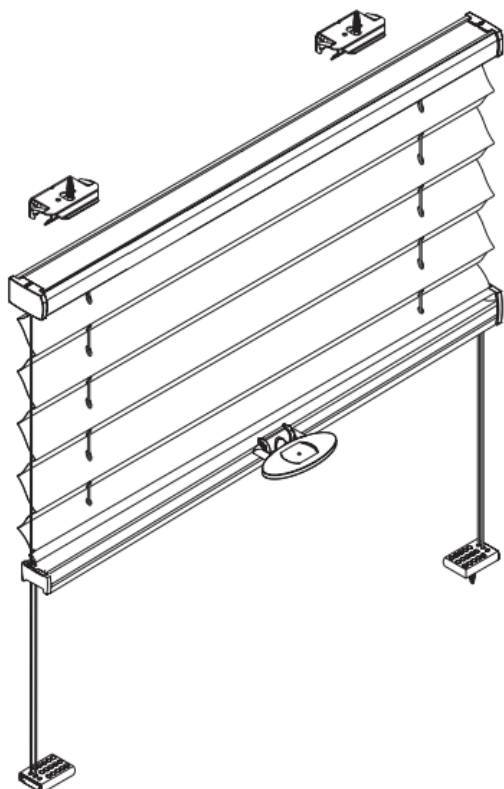
### Installation for Window Frame / Wall:




1. FaceFix installation (top rail)
2. FaceFix (bottom Footplates)
3. Fitting the lower covers
4. Installation sequence
  - Rail installation sequence on Clips 4-A1 and 4-A2
  - Rail installation sequence on Clips 4-B/C1 and 4-B/C2

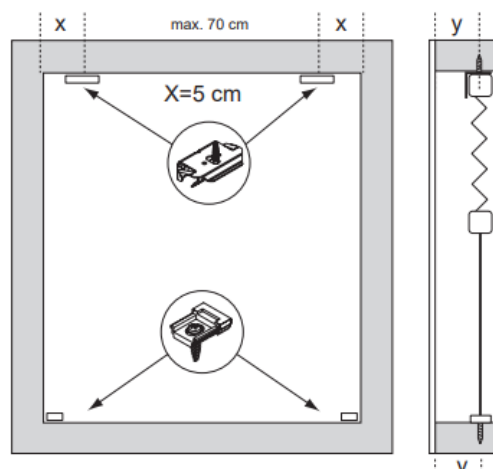
## Frequently Asked Questions (FAQ)

- **Q:** What is the maximum height of the product?
- **A:** The maximum height is 70 cm.
- **Q:** How many parts are included for different product width ranges?
- **A:** For 0 – 80 cm width, there are 2 parts, and for 81 – 150 cm width, there are 3 parts.
- **Q:** What is the X dimension mentioned in the specifications?
- **A:** The X dimension is 5 cm.

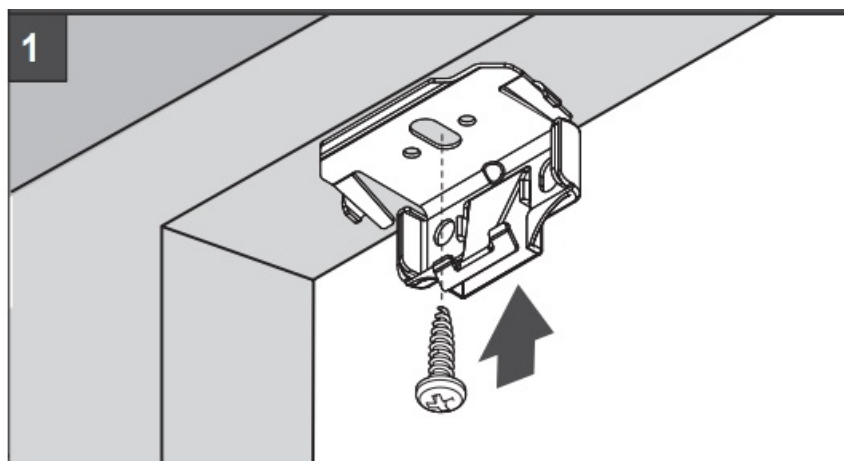
## TYPE DB10 / DB15 topfix



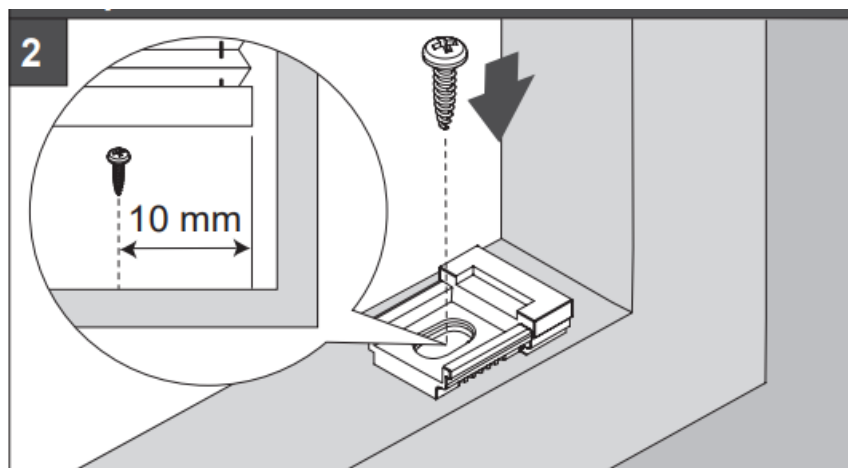
Product width	Number of parts		
			
0 - 80 cm	2	2	4
81 - 150 cm	3	2	5



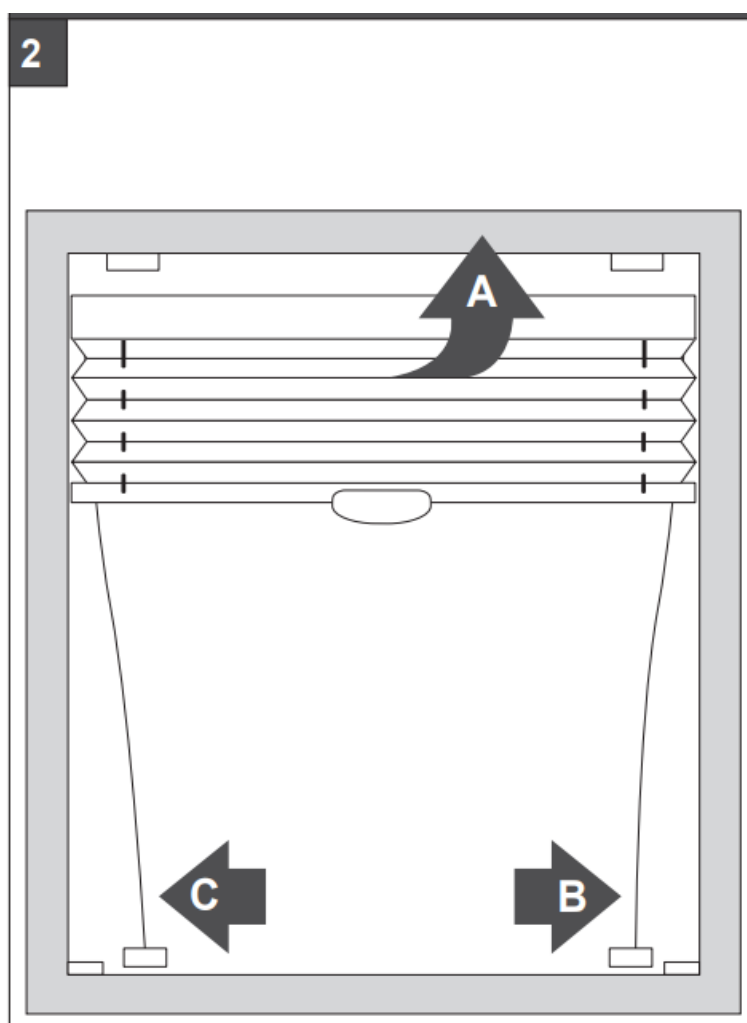
1. Clip installation
- 2.



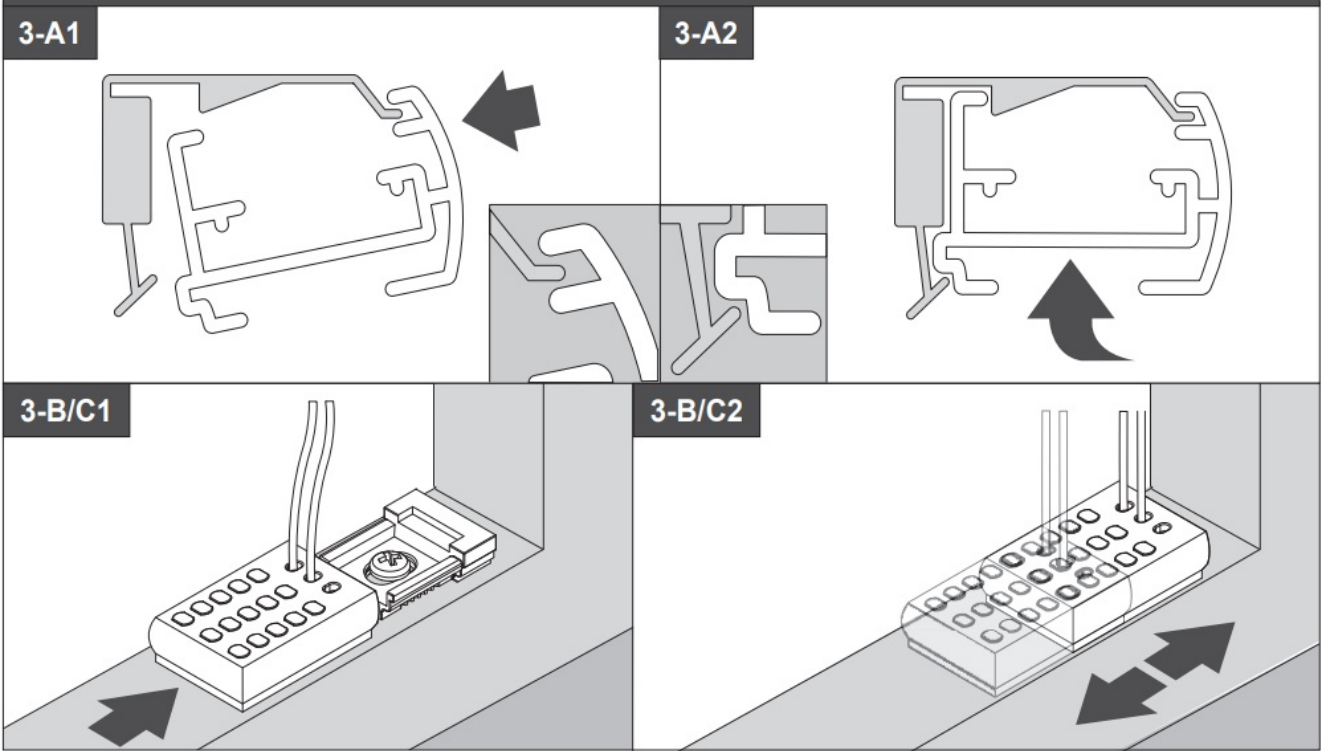
Footplate installation



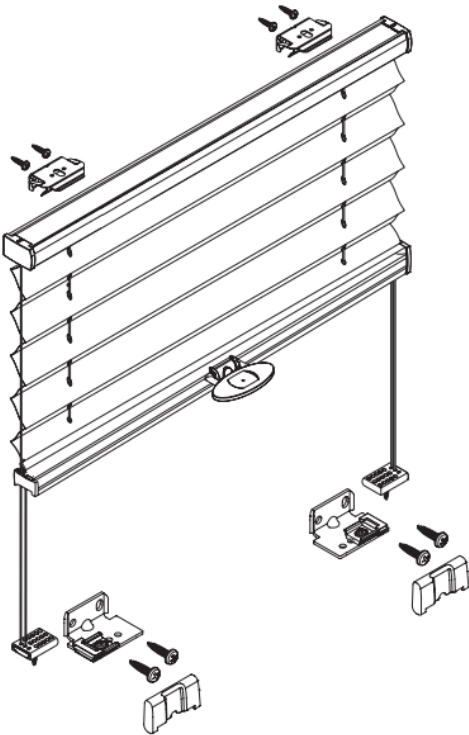
Installation sequence









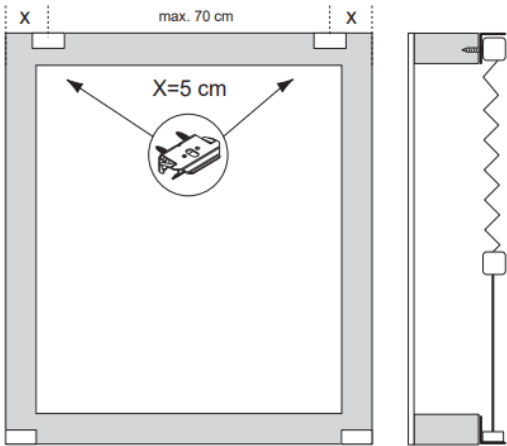
3. Rail installation sequence on Clips



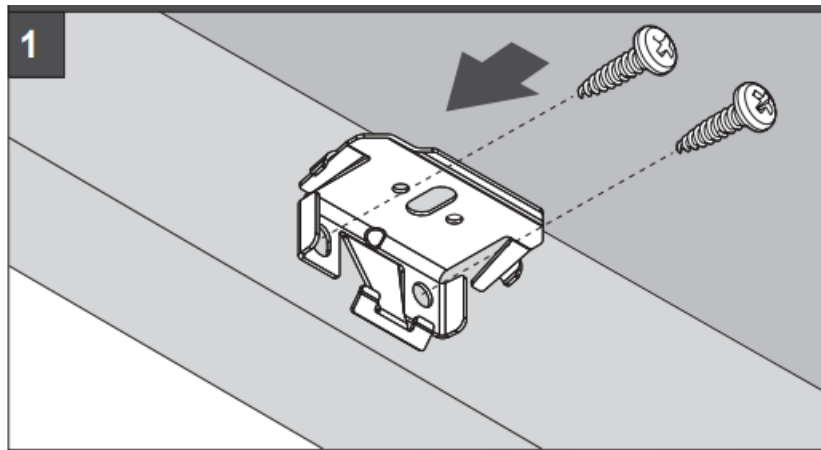
TYPE DB10 / DB15 window frame / wall



Product width	Number of parts					
						
0 - 80 cm	2	2	2	2	8	2
81 - 150 cm	3	2	2	2	10	2

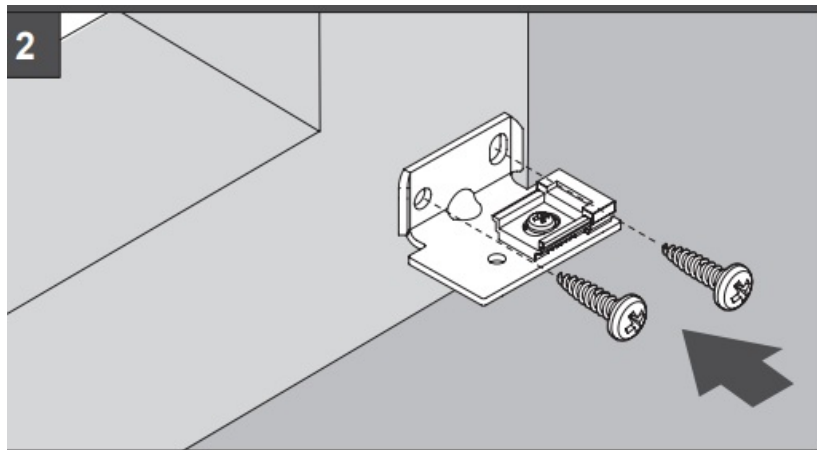


1. FaceFix installation (top rail)

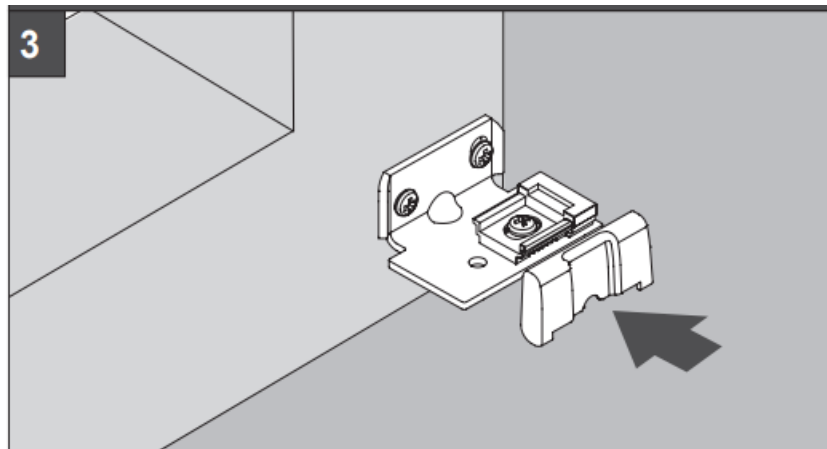


2. FaceFix (bottom Footplates)

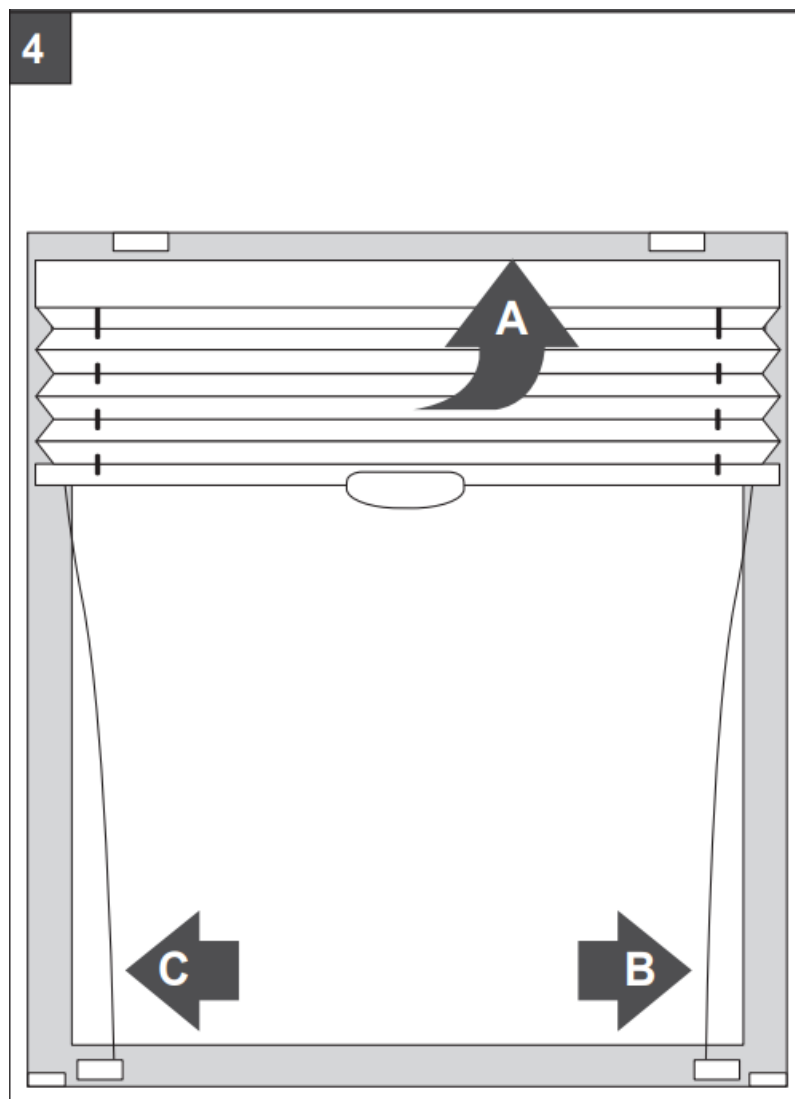
3.



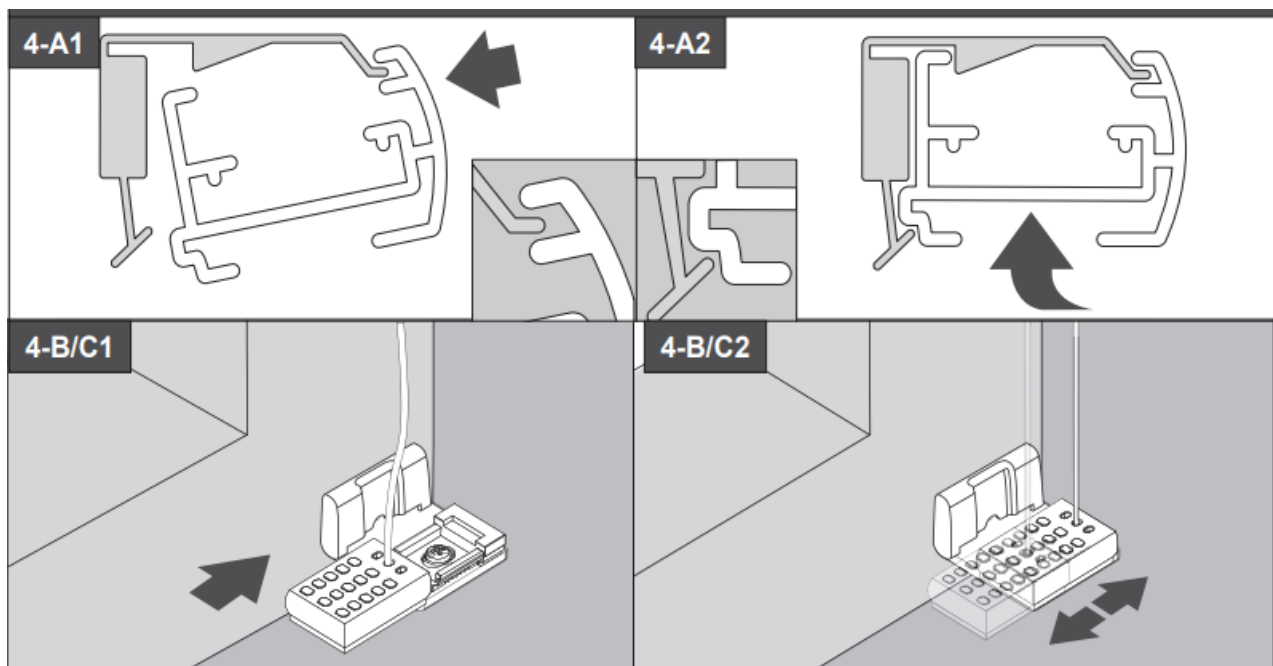
Fitting the lower covers

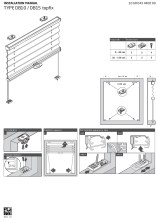


4. Installation sequence



5. Rail installation sequence on Clips





## [FRAMEZ DB15 Topfix Window Frame](#) [pdf] Installation Guide

DB10, DB15, DB15 Topfix Window Frame, DB15, Topfix Window Frame, Window Frame, Frame

## References

- [User Manual](#)

### [Manuals+](#), [Privacy Policy](#)

This website is an independent publication and is neither affiliated with nor endorsed by any of the trademark owners. The "Bluetooth®" word mark and logos are registered trademarks owned by Bluetooth SIG, Inc. The "Wi-Fi®" word mark and logos are registered trademarks owned by the Wi-Fi Alliance. Any use of these marks on this website does not imply any affiliation with or endorsement.