



fractal design Node 304 Computer Case User Manual

[Home](#) » [fractal design](#) » fractal design Node 304 Computer Case User Manual 

fractal
design

Node 304 COMPUTER CASE



User Manual

Contents

- [1 Node 304 Computer Case](#)
- [2 Installation / instructions](#)
- [3 Limited warranty and limitations of liability](#)
- [4 Documents / Resources](#)
 - [4.1 References](#)
- [5 Related Posts](#)

Node 304 Computer Case

About Fractal Design – our concept

Without a doubt, computers are more than just technology – they have become an integral part of our lives. Computers do more than make living easier, they often define the functionality and design of our homes, our offices and ourselves.

The products we choose represent how we want to describe the world around us and how we want others to perceive us. Many of us are drawn to designs from Scandinavia, which are organized, clean and functional while remaining stylish, sleek and elegant. We like these designs because they harmonize with our surroundings and become nearly transparent. Brands like Georg Jensen, Bang Olufsen, Skagen Watches and Ikea are just a few that represent this Scandinavian style and efficiency.

In the world of computer components, there is only one name you should know, Fractal Design.

For more information and product specifications, visit www.fractal-design.com



Support

Europe and Rest of World: support@fractal-design.com

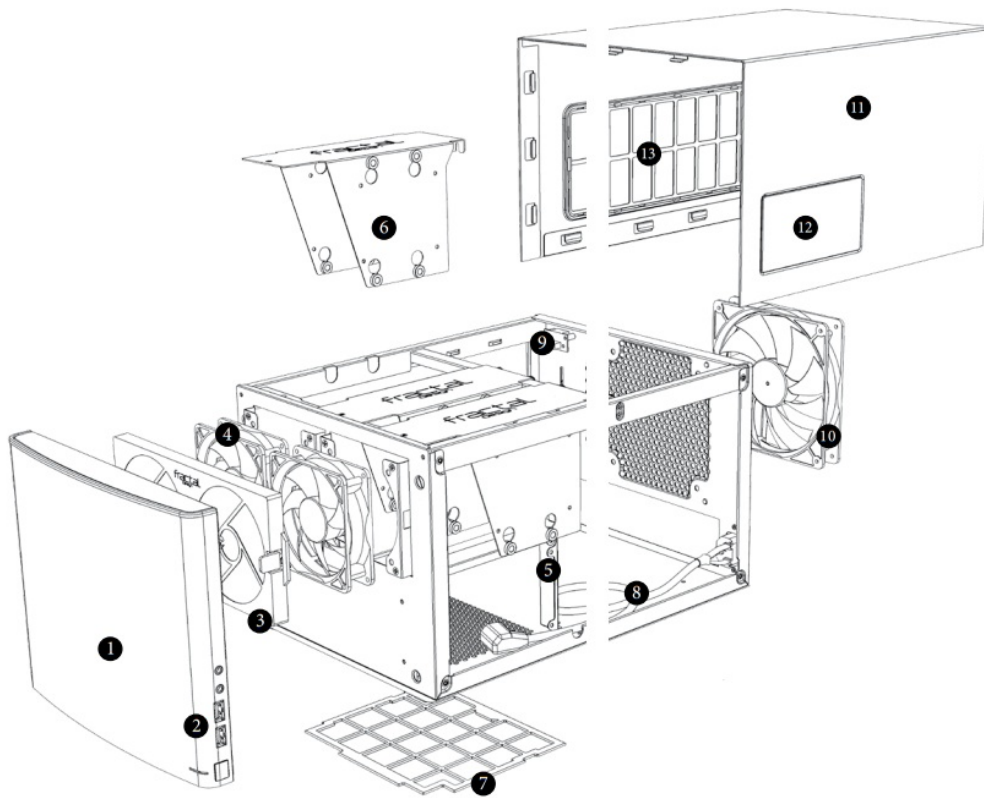
North America: support.america@fractal-design.com

DACH: support.dach@fractal-design.com

China: support.china@fractal-design.com

04NODE 304

www.fractal-design.com



Exploded View Node 304

1. Aluminum front panel
2. Front I/O with USB 3.0 and Audio in/out
3. Front fan filter
4. 2 x 92mm Silent Series R2 fans
5. ATX power supply mounting bracket
6. Hard drive mounting bracket
7. PSU filter
8. PSU extension cord
9. 3-step fan controller
10. 140mm Silent Series R2 fan
11. Top cover
12. PSU air outlet
13. GPU air intake with air filter

Node 304 computer case

The Node 304 is a compact computer case with a unique and versatile modular interior that allows you to adapt it according to your needs and components. Whether you want a cool file server, a quiet home theater PC, or a powerful gaming system, the choice is yours.

The Node 304 comes complete with three hydraulic bearing fans, with the option of using tower CPU coolers or a water cooling system. All air intakes are equipped with easy-to-clean air filters, which reduce dust from getting into your system. The strategic placement of the hard drives directly facing two front-mounted Silent Series R2 fans ensures that all your components remain at optimal cool temperatures. Unused hard drive disk brackets can be easily removed to make room for long graphic cards, increased airflow, or additional space for organizing cables.

The Node 304 carries on the Fractal Design legacy of minimalistic and sleek Scandinavian design combined with

maximum functionality.

Installation / instructions

To take full advantage of the improved features and benefits of the Node 304 computer case, the following information and instructions are provided.

System installation

The following steps are recommended for mounting components in a Node 304:

1. Remove the three hard drive mounting brackets.
2. Mount the motherboard using the provided motherboard standoffs and screws.
3. Install the ATX power supply using the screws provided (see detailed description below).
4. If desired, mount a graphics card (see detailed description below).
5. Mount the hard drive(s) to the white bracket(s) using the provided screws.
6. Mount the hard drive brackets(s) back into the case.
7. Connect the power supply and motherboard cables to the components.
8. Connect the power supply extension cable to the power supply.

Installing hard drives

Installing hard drives in the Node 304 is similar to standard computer cases:

1. Dismount the hard drive brackets from the case by removing the screw located in the front with a Phillips screwdriver and the two thumb screws in the back.
2. Mount the hard drives with their connectors facing to the rear of the case, using the screws provided in the accessory box.
3. Put the bracket back into the case and secure it before plugging in the connectors; unused hard drive brackets can be left out for increased airflow.

Installing the power supply

The power supply is easiest to install after the motherboard has been installed:

1. Slide the PSU into the case, with the power supply fan facing downwards.
2. Secure the power supply by fastening it with the three screws provided in the accessory box.
3. Plug in the pre-mounted extension cable in your power supply.
4. Lastly, plug in the cable that came with the power supply at the back of the case and turn on your power supply.

The Node 304 is compatible with ATX power supply units (PSU) up to 160mm in length. PSUs with modular connectors on the back typically need to be shorter than 160 mm when used in combination with a long graphics card.

Installing graphics cards

The Node 304 was designed with the most powerful components in mind. In order to install a graphics card, one of the hard drive brackets, located on the same side as the motherboard's PCI slot, must first be removed. Once removed, the graphics card can be inserted onto the motherboard.

The Node 304 is compatible with graphics cards up to 310mm in length when 1 HDD bracket is removed. Please note that graphics cards longer than 170 mm will conflict with PSUs longer than 160mm.

Cleaning the air filters

Filters are installed at air intakes to help prevent dust from entering the case. To ensure optimal cooling, filters should be cleaned at regular intervals:

- To clean the PSU filter, simply slide the filter toward the rear of the case and remove it; clean any dust gathered on it.
- To clean the front filter, first, remove the front panel by pulling it straight out and using the bottom as a handle. Be careful not to damage any cables while doing this. Once the front panel is off, remove the filter by pushing the two clips on the sides of the filter. Clean the filters, then reinstall the filter and front panel in reverse order.
- By design, the side filter is not removable; the side filter can be cleaned when the top part of the case is removed.

Fan controller

The fan controller is located at the rear of the case over the PCI slots. The controller has three settings: low speed (5v), medium speed (7v), and full speed (12v).

Limited warranty and limitations of liability

Fractal Design Node 304 computer cases are guaranteed for twenty-four (24) months from the date of delivery to the end-user, against defects in materials and/or workmanship. Within this limited warranty period, products will either be repaired or replaced at Fractal Design's discretion. Warranty claims must be returned to the agent who sold the product, shipping prepaid.

The warranty does not cover:

- Products that have been used for rental purposes, misused, handled carelessly or applied in such a way that is not in accordance with their stated intended use.
- Products damaged from an Act of Nature include, but are not limited to, lightning, fire, flood, and earthquake.
- Products whose serial number and/or the warranty sticker have been tampered with or removed.

Product support

For product support, please use the following contact information:



Europe and Rest of World: support@fractal-design.com


North America: support.america@fractal-design.com

DACH: support.dach@fractal-design.com

China: support.china@fractal-design.com

www.fractal-design.com

Documents / Resources

	<p>fractal design Node 304 Computer Case [pdf] User Manual Node 304 Computer Case, Computer Case, Node 304, Case</p>
--	--

References

- [🔗 Fractal Design Gaming & PC Hardware — Cases - PSU - Cooling - Fans](#)

Manuals+.