



FRACTAL AUDIO SYSTEMS VP4 Virtual Pedalboard User Guide

[Home](#) » [FRACTAL AUDIO SYSTEMS](#) » FRACTAL AUDIO SYSTEMS VP4 Virtual Pedalboard User Guide 

Contents

- [1 FRACTAL AUDIO SYSTEMS VP4 Virtual Pedalboard](#)
- [2 Product Information](#)
- [3 CONTROLS](#)
- [4 MAIN DISPLAY](#)
- [5 'GIG MODE'](#)
- [6 CONNECT PEDALS & SWITCHES](#)
- [7 VP4 MORE](#)
- [8 MANUALS & DOWNLOADS](#)
- [9 Documents / Resources](#)
 - [9.1 References](#)
- [10 Related Posts](#)



FRACTAL AUDIO SYSTEMS VP4 Virtual Pedalboard



Product Information

Specifications

- Virtual pedalboard with four simultaneous effects
- 104 presets grouped into banks (A-Z) of four presets each
- Four scenes per preset
- Effects include distortion, delay, reverb, and more
- Each effect has four independent channels
- GIG MODE for convenient preset access

CONTROLS

Depending on the mode, use the footswitches to change PRESETS (green), select SCENES (red), turn EFFECTS (blue) on or off, or access the TUNER/TEMPO menu (yellow).

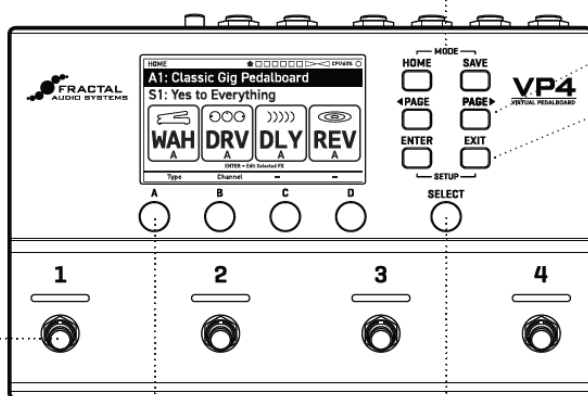
Press **HOME** anytime to show the Home page.

Press **SAVE** to store the preset. Press **ENTER** twice to confirm.

Press **HOME & SAVE** at the same time to display **MODE SELECT**. Select the mode with a footswitch.

The **PAGE** buttons are used to scroll pages left and right. An icon indicates the current position.

Use the **ENTER & EXIT** buttons to confirm or discard various options..



Turn the **ABCD** knobs to make settings and change values.

Turn the **SELECT** knob to highlight areas on the display. On the home page, it also changes the **MODES**.

SETUP



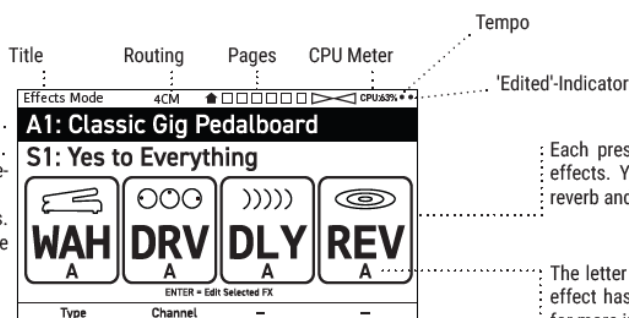
Press **ENTER & EXIT** simultaneously to access the **SETUP** menu. Use the **PAGE** buttons to access the pages for Audio, Footswitches, Pedals, MIDI, Global, Reset, and System Info. Press **EXIT** to exit the **SETUP** menu.

NOTE: Changes made in the Setup menu do not need to be saved. As soon as you make changes, 'SAVING...' appears at the top of the display. Do not turn off the VP4 during the saving process. Changes may be lost..

MAIN DISPLAY

The **PRESET** is displayed here. The VP4 has 104 presets, grouped into banks (A-Z) of four presets each.

The **SCENE** is displayed directly below the preset name. Each preset consists of four scenes. See the user manual to learn more about scenes..



The **ABCD** icons above indicate their respective functions, which change depending on the page.

Each preset consists of up to four effects. You'll find distortion, delay, reverb and many more.

The letter below the effect shows its current 'channel'. Each effect has four independent channels. See the user manual for more information.

'GIG MODE'

The VP4 offers a convenient setting called **GIG MODE**, which is activated by default. When this setting is active, you can access presets, banks, scenes, effects, channels, tuner and tap tempo via the four footswitches by simply tapping and holding the switches.

ANYTIME, ANYWHERE..

TAP these switch combos for special action:



IN THE MODE SELECT PAGE

Tap any switch to select a mode



IN PRESET MODE

▼ **Tap** a switch to load a **Preset** from the current Bank



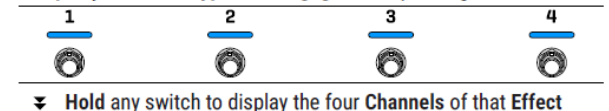
IN SCENE MODE

▼ **Tap** any switch to select a **Scene** from the current Preset.

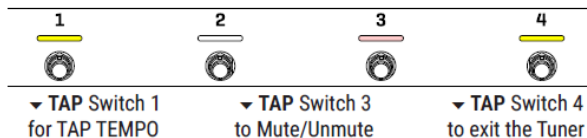


IN FX MODE

▼ **Tap** any switch to **Bypass** or **Engage** corresponding Effect



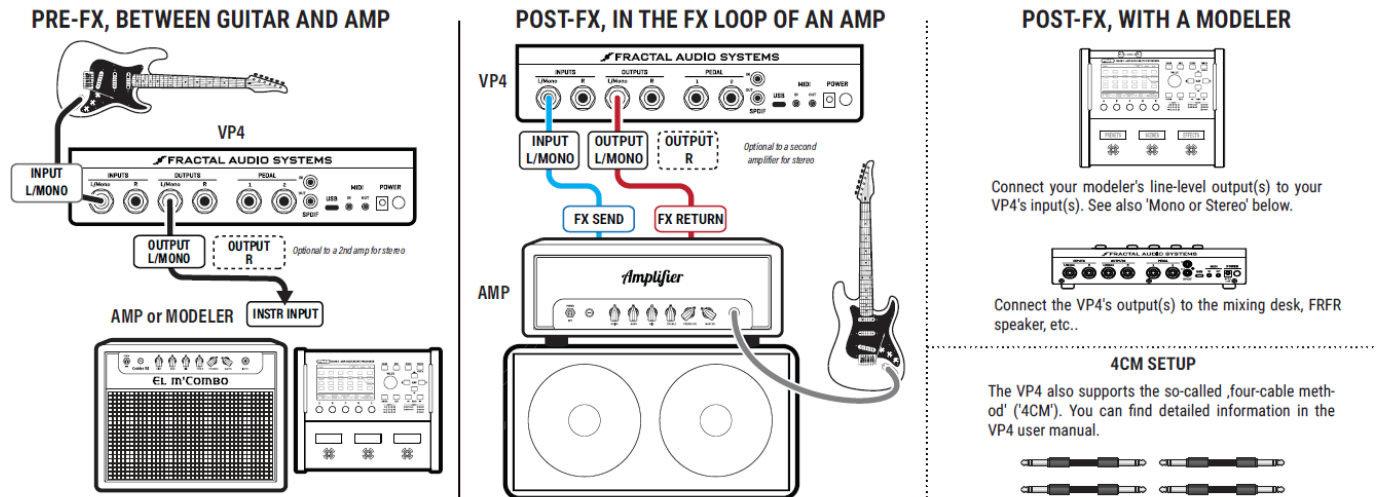
TUNER/TEMPO MODE



NOTE: The default 'PRESS & HOLD' setting in 'Gig Mode' causes effects and other footswitches to trigger when you release the switch instead of when you press it. To disable or customize 'PRESS & HOLD', use the **SETUP>Footswitches** page. For more information, see the user manual.

VP4 SETUP

The VP4 can be used as a PRE or POST effects unit. It also features an integrated protection circuit to prevent switch-on crackling. Nevertheless, the amplifier and speakers should be the last things to be switched on and the first to be switched off.



• INPUT LEVEL

The VP4 is set up for a typical guitar with hot pickups. If you see the 'IN CLIP' warning on the display, it means that the input levels are too high.

To adjust, go to **SETUP > Audio > Input Pad** and turn encoder A to raise the pad setting until the clipping stops. If the VP4 still clips at the maximum pad setting of 18 dB, reduce the output level of the connected guitar or device.

For more information, including the VP4's automatic input pad adjustments, see the user guide.

• OUTPUT LEVEL

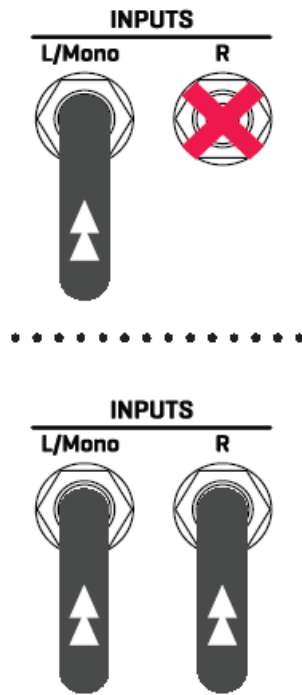
Without any effects or customizations, the VP4 outputs a unity gain signal. However, the level can vary depending on the settings of the effects, presets, and scenes.

If there is an overload on the output, an OUT CLIP warning will appear, indicating that you need to lower the levels of your effects, presets, or scenes. For more information on output levels, please refer to the user manual.

• MONO OR STEREO

The VP4 is set to 'MONO' by default. Use L/Mono input only for mono signals.

For stereo signals, always connect both the left and right inputs. Change **SETUP>Audio>Input Mode** to 'STEREO'.



The VP4 is factory set to 'STEREO'. This mode is also compatible with MONO. Find out more in the user manual.

VP4 BASIC EDITING

First, select any preset by entering Preset Mode.

SELECT OR CHANGE THE FX BLOCK

- Switch to effects mode.
- Turn ABC or D to change the corresponding block type.
- Press ENTER.

EDIT FX SETTINGS

- Turn SELECT to highlight any effect.
- Press ENTER to enter the Basic Editor.
- Use knobs ABDC to adjust settings. Turn SELECT to change rows
- Use PAGE buttons for FX with more options. The left-most page allows you to change Effect Type

SAVE CHANGES

- Press SAVE. Use ABCD and SELECT to choose a location and edit names. Press ENTER to confirm.

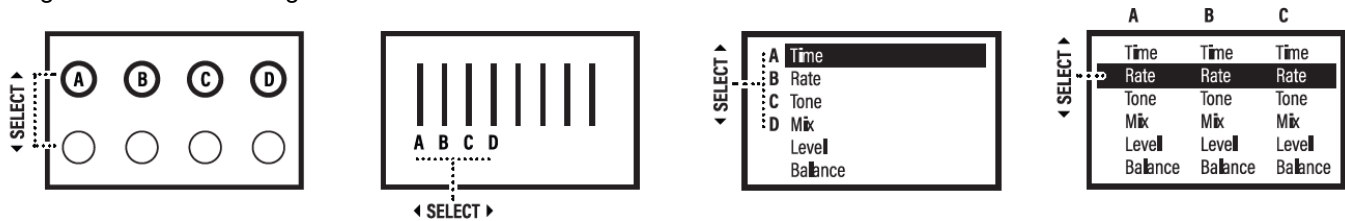
BLOCK-TYPE or EFFECT-TYPE

Effects in the VP4 are organised as high-level blocks such as 'Reverb' or 'Drive'. Blocks contain an 'Effect Type' picker for subtypes such as 'Deluxe Verb' or 'Face Fuzz'. The TYPE PICKER is automatically displayed when you first edit a new effect. To change the effect type later, edit the effect and Page left to the type page.

EFFECT EDIT PAGES

The VP4 uses various pages to edit effect parameters and other settings. Use SELECT and ABCD knobs to

navigate and make changes.



- **What is a Preset?**

Each preset is a complete virtual pedalboard with its own four effects. In each preset, you can select effects, adjust them, and save your settings. Any preset in the VP4 can be customised or even overwritten.

Some players may use just a single preset. Others may create a preset for each performance, each guitar, or even for parts of a song.

Each preset also contains additional settings. Press HOME and use the PAGE buttons to access settings for the Noise Gate, Levels, EQ and more.

- **What is a Scene?**

A scene is a snapshot of a pedalboard, so to speak. Each scene stores the bypass status of an effect, and can have different 'channel' settings. For more information on this topic, see the user manual.

What is a Channel?

A channel is one of four independent settings within a block, labelled A, B, C, and D. Channels allow you to switch between different configurations of the same effects block without loading multiple instances of the same block into a preset. For example, a drive block could use Channel A for a clean boost, Channel B for overdrive, Channel C for distortion, and Channel D for fuzz.

This provides a wider range of sounds while conserving CPU by using one block with multiple settings. To access a menu of channels, press and hold the footswitch for any effect.

Gear Nerd? Expert Tweaker?

The VP4 was designed for ease of use, with minimal options, similar to traditional pedals. At the same time, Fractal Audio is known for its extensive depth and flexibility, enabling creative musicians and effects enthusiasts to delve deep into sound design.

If this sounds like you, then Expert Edit might be for you. This special mode offers advanced options for editing effects and modifiers. To open Expert Edit, press PAGE LEFT & RIGHT at the same time while editing an effect or when an effect is selected on the start page. You can leave Expert Edit at any time by pressing EXIT.

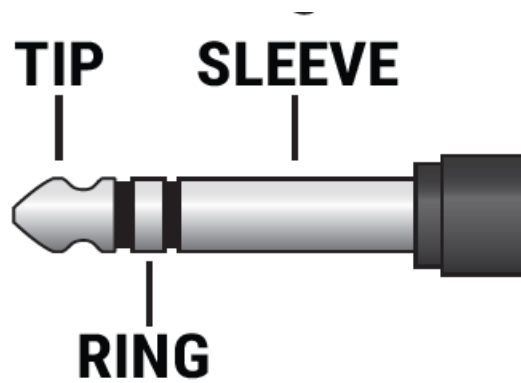


CONNECT PEDALS & SWITCHES

The VP4 has two connections for expression pedals or switches. These must be configured before first use.

SET UP AN EXPRESSION PEDAL

Expression pedals should have a linear taper with a maximum resistance in the range of 10–100 kΩ. Connect an expression pedal using a TRS-TRS cable. TIP SLEEVE



1. Open SETUP>Pedals.
2. For pedal jack 1, set the parameter Pedal 1 Type to 'EXPRESSION PEDAL'. Respectively Pedal 2 Type for pedal jack 2.
3. Select the Calibrate line and press ENTER.
4. Follow the on-screen instructions.

SET UP A SWITCH

1. A switch can be connected instead of a pedal..
2. Open SETUP>Pedals and set Pedal 1 Type' to one off the 'SWITCH' options.
 - Select 'SWITCH (Any, Follow Hardware)', if you connect either a latching switch or a momentary switch.
 - Choose 'SWITCH (Momentary, Virtual Toggle)', if you connect a momentary switch, but want it to function like a latching switch.

Modifiers provide an easy way to use a connected pedal or switch to control sound settings like the sweep of a Wah or Whammy, the rate of a Rotary, the mix of a Delay or Reverb, or hundreds of other settings. To set up a modifier, look for the Modifier symbol while editing any effect. It appears as a small yellow circle in the center of a knob, or near a dropdown or menu parameter.

Select the desired knob/control and press ENTER to open the modifier screen.

Choose a Source, such as 'PEDAL 1' to assign it. You can set the range and more. Press EXIT when you're finished, and don't forget to save the preset.

See your Owner's Manual for more on Modifiers and other ways to use pedals or switches using the SETUP > MIDI Remote menu.



BYPASS THE VP4

The VP4 features a buffered analogue bypass. This passes the signal directly from the input to the output, without digital conversion or latency. If you want the analogue bypass to be activated automatically when all four effects are bypassed, enable this option under: **SETUP > Global Settings > Automatic VP4-Bypass**.

CPU

More effects or more sophisticated settings increase the CPU load. An indicator in the upper right corner shows the current CPU load. The limit is around 80%. If this limit is exceeded, the VP4 switches to bypass mode and displays the warning 'CPU LIMIT: Bypassed'. See also the user manual to learn more about the CPU.

USB

The VP4 can be connected to a Mac or PC via USB. This offers features such as audio recording, playback, using VP4-Edit with Fractal-Bot and direct MIDI integration with a DAW. Windows computers require a driver.

USB INPUTS (RECORDING)



USB-OUTPUTS (PLAYBACK)



Hum with USB connected? Computers can create a ground loop with a guitar amp if the VP4 is connected to both. To fix this problem, try using a USB isolator between the VP4 and the computer or an audio isolating transformer between the VP4 and the amp. Also, if you're using a laptop, try switching from AC power to battery power.

VP4 MORE

PRESET EXTRA

Presets have additional features. Use the PAGE buttons to navigate from the home page. The info bar shows you where you are at all times.

- The Noise Gate reduces noise when you're not playing. Increase Threshold to close the gate on louder noise. Setting it too high may gate your playing. Ratio adjusts how powerful the gate is – from no effect to extreme. Note: Some gate types rely on a global setting. For Europe, Australia and other regions with 50 Hz AC power, change SETUP > Global Options > AC Line Frequency to 50 Hz.
- On the 'Main Level' page, you can adjust the overall levels of the current preset and each scene within it.
- If you set the levels too high, a 'clipping' warning may appear. To fix this, lower the levels of the effects, the preset or the scene.
- The Preset EQ page offers a 10-band EQ that can be set differently for each preset – a great sound-shaping tool. If you make heavy boosts, you may need to lower the overall level of the preset to avoid clipping.
- The Preset Mix/Routing page allows you to change the mix, level, bypass, channel and more for each effect in the current preset. These options can also be found on the regular FX editing pages, but this is a handy tool for making quick changes. You can also change the effect routing, kill dry, bypass mode and more. For more information, please refer to your user manual.
- The 'Controller' page is actually the gateway to another menu. Just as an expression pedal can be used as a modifier, you can also assign an Envelope Follower, ADSR, LFO and Sequencer to make creative sound changes in real time. A tempo page and a modifier overview are also included.
- All settings in the 'Controller' submenu are part of the preset and can be selected and saved. For more information, please refer to your user manual.
- Use the Tools page to reset any channel or effect in the current preset to default settings—useful for a fresh start or when troubleshooting.
- You can also reset the noise gate, preset EQ, or controller menu for the current preset. Don't forget to save if you want the changes to be permanent.

MANUALS & DOWNLOADS

The VP4 comes with a detailed user manual that provides instructions for setup, operation and troubleshooting. Downloads are also available for the Windows USB driver and any new firmware updates for the VP4.

www.g66.eu/en/vp4-downloads



VP4 EDIT

VP4-Edit is the accompanying editor app for Mac or Windows. www.g66.eu/en/vp4-edit



SUPPORT

Tel: +49 461 1828 094

E-Mail: support@g66.eu WhatsApp: +49 151 62660473

FORUM

The Fractal Audio forum is also a great resource, with members helping other members 24/7:

<https://forum.fractalaudio.com>





Documents / Resources



[FRACTAL AUDIO SYSTEMS VP4 Virtual Pedalboard](#) [pdf] User Guide
VP4 Virtual Pedalboard, VP4, Virtual Pedalboard, Pedalboard

References

-  [G66.eu - VP4 Edit](#)
-  [Fractal Audio Systems Forum](#)
- [User Manual](#)

Manuals+. [Privacy Policy](#)

This website is an independent publication and is neither affiliated with nor endorsed by any of the trademark owners. The "Bluetooth®" word mark and logos are registered trademarks owned by Bluetooth SIG, Inc. The "Wi-Fi®" word mark and logos are registered trademarks owned by the Wi-Fi Alliance. Any use of these marks on this website does not imply any affiliation with or endorsement.