



FR-TEC FT7015 Gaming Controller Instruction Manual

[Home](#) » [FR-TEC](#) » FR-TEC FT7015 Gaming Controller Instruction Manual 

Contents

- [1 FR-TEC FT7015 Gaming Controller](#)
- [2 Product Information](#)
- [3 Product Usage Instructions](#)
- [4 GENERAL INFORMATION](#)
- [5 BUTTONS ON THE FRONT](#)
- [6 REAR CONNECTIONS AND PEDAL ARRANGEMENT](#)
- [7 BUTTON CORRESPONDENCE TABLE](#)
- [8 USE OF ACCESSORIES](#)
- [9 ADJUSTMENT OF THE EQUIPMENT](#)
- [10 PRECAUTIONS](#)
- [11 Documents / Resources](#)
- [12 Related Posts](#)



FR-TEC FT7015 Gaming Controller



Product Information

The FR-FORCE Racing Wheel is a steering wheel designed for use on PS4, Xbox Series S|X, Xbox One, and PC. It features a removable rim and base design. The steering angle can be adjusted between 900 and 270 degrees. The steering wheel has a comfortable hoop with an Alcantara finish and a built-in intelligent drive motor with a response force of 3.2 Nm. It comes with two adjustable pedals for acceleration and braking.

Supported Platforms: – PS4 – Xbox One – PC – Xbox Series X/S

Product Usage Instructions

1. Connect the steering wheel to the desired platform using the appropriate connections.
2. Adjust the swivel angle of the steering wheel between 270 and 900 degrees using the corresponding button.
3. Connect the pedals to the steering wheel using the pedal connection port.
4. Connect the power source to the power connection port.
5. If using on a console, connect the original controller to the steering wheel using the USB input for booting.
4. Place the steering wheel on a stable surface, such as a desk.
5. Adjust the clamping force of the clamp to secure the steering wheel on the desk without overtightening.
6. Use the buttons on the front of the steering wheel for various actions, such as changing gears, navigating menus, and activating special functions.
7. Refer to the button correspondence table for the mapping of buttons on different platforms.
8. When not getting a response from the steering wheel or if the game screen is not moving, restart the gaming platform and reconnect the steering wheel.
9. If the steering wheel is not functioning properly in-game, restart the gaming platform and follow the steps again.
10. Take necessary precautions to avoid disassembling or damaging the product under warranty.
13. Do not apply excessive pressure to the product.
11. Avoid dropping the product from heights.

12. Do not immerse the product in water. Please refer to the user manual for further instructions and precautions.

Read this guide carefully before using the product



Do not disassemble or damage the product under warranty.



Do not apply pressure to the product.



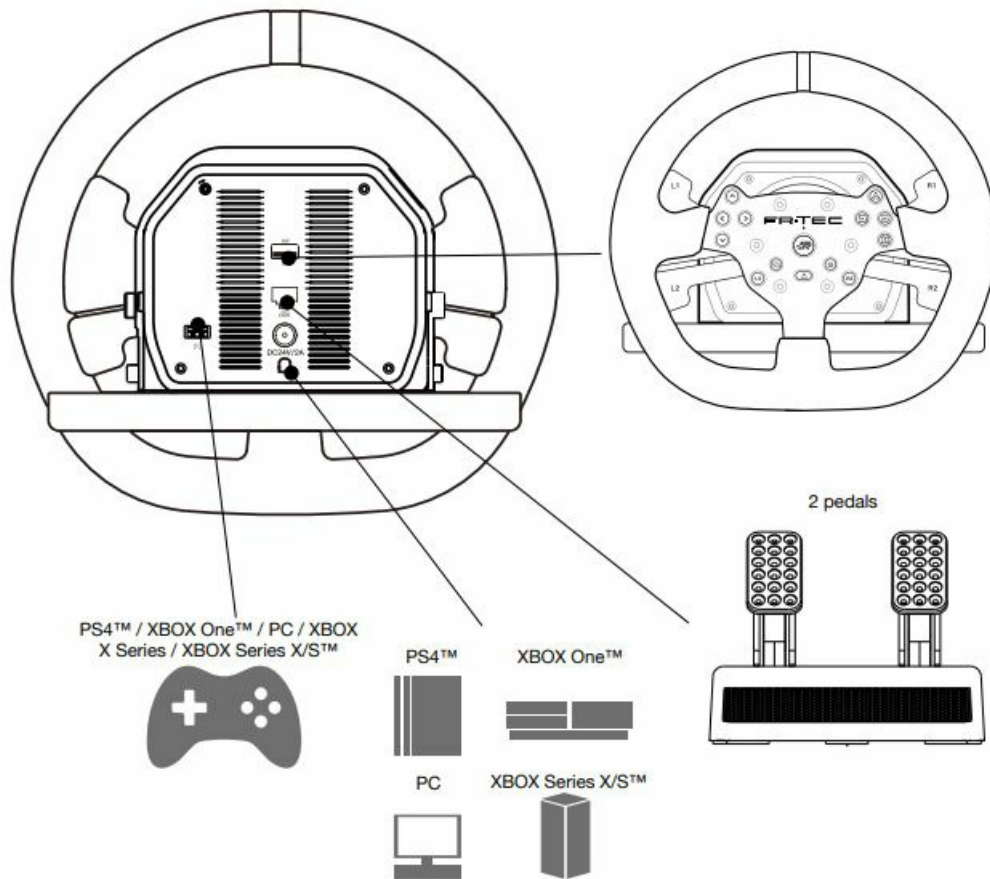
Avoid dropping the product from heights



Do not immerse the product in water.



Switch button between 270 and 900 degrees



GENERAL INFORMATION

The FR-FORCE Racing Wheel is a steering wheel specially designed for use on PS4™, XBOX Series S| X and XBOX One™, PC. The steering angle can be changed between 900 and 270 degrees. The rim and base of the steering wheel feature a removable design. The comfortable hoop with Alcantara finish and a built-in intelligent drive motor with a response force of 3.2 Nm. The steering wheel is equipped with two pedals, accelerator and brake, adjustable in position and resistance.

SUPPORTED PLATFORMS:

- PS4™.
- XBOX One™.
- XBOX Series X|S™.
- PC-WINDOWS 10 (version: 1809 or higher).

CHARACTERISTICS:

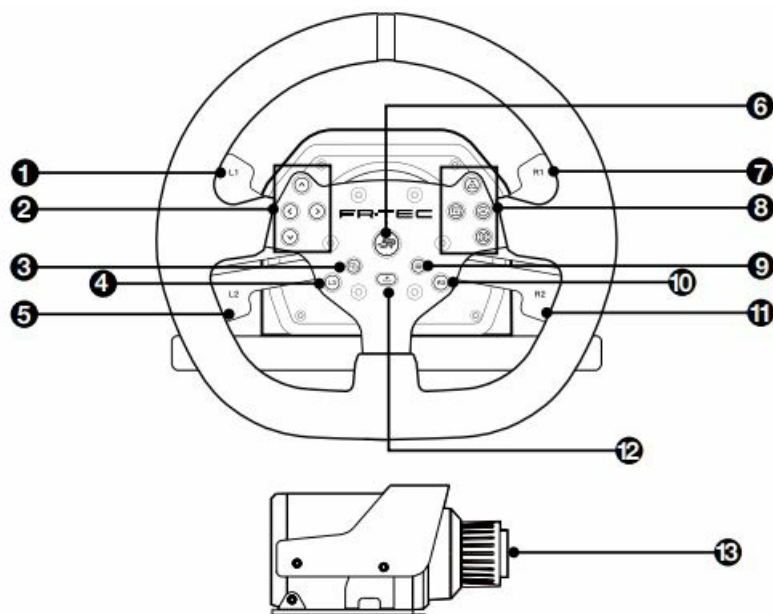
- Force feedback powered by two motors with a force of 3.2Nm for a real driving simulation on the track.
- Pedalboard with spring resistance regulation.
- Detachable steering wheel rim.
- 24 VDC/2 A power supply.
- With 18 buttons:
 - D-PAD (Digital Pad).
 - X/A button.
 - Circle/B button.

- Triangle/Y button.
- Square/X button.
- R1.
- R2.
- L1.
- L2.
- Menu.
- View.
- R3 button (arranged next to the L3 button).
- New “Share” button (specific for the latest generation of XBOX One™ consoles).
- L3 button.
- HOME button.
- Automatic steering wheel centring function.
- Accelerator and brake pedals equipped with adjustable force system.

Interface:

- 1 RJ11-6P input port for gear shift (sold separately).
- 1 RJ11-8P input port for foot pedals.
- 1 input port for power supply (24 V).
- 1 USB output (connection to PS4™ / XBOX Series X/S™ / XBOX One™ / PC console), 1 USB boot port (connection to original controller for booting).
- The steering wheel can be connected to a PC via USB cable to update the FW.
- When the cam is actuated, it will emit a “click” sound.

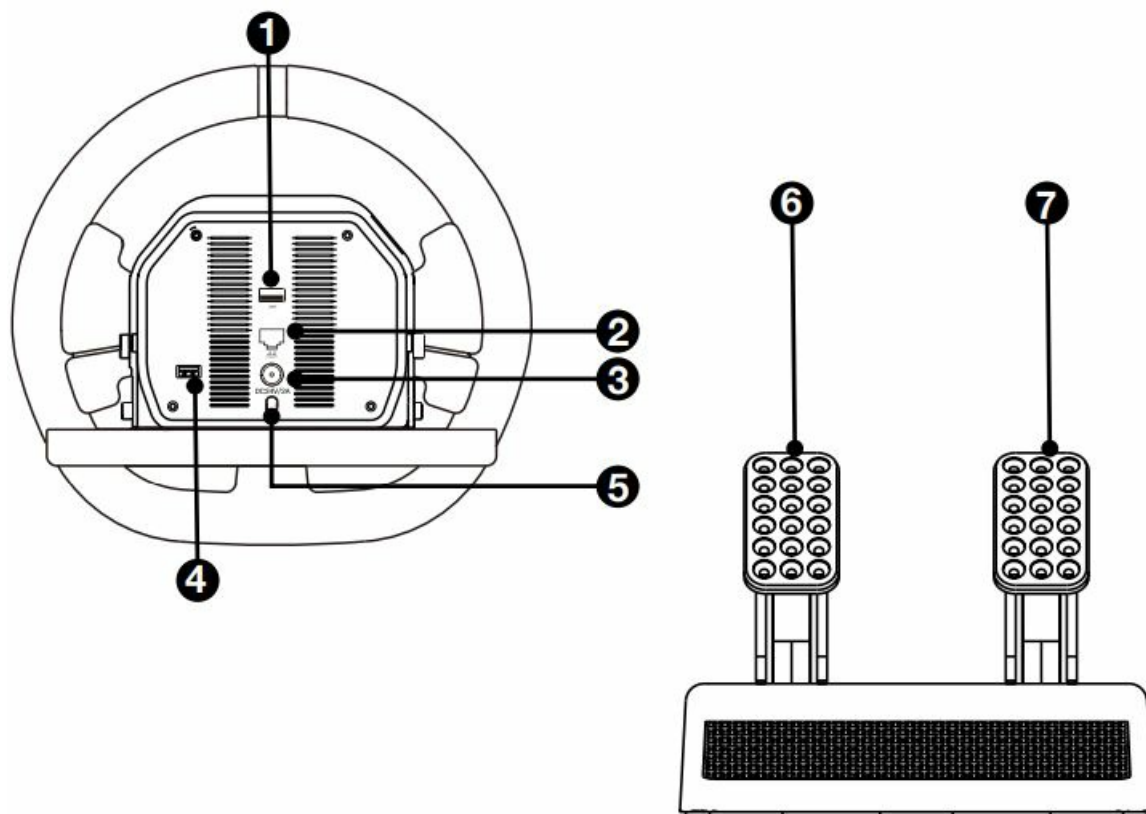
BUTTONS ON THE FRONT



1. Left cam up (L1).
2. Directional pad.
3. Share / View.
4. L3 button.

5. Left cam down (L2).
6. HOME button.
7. Right cam up (R1).
8. Operating buttons.
9. Options / Menu.
10. R3 button.
11. Right cam down (R2).
12. SHARE" button.
13. Base / Steering wheel motor.


REAR CONNECTIONS AND PEDAL ARRANGEMENT



1. Gear shift connection port
2. Selection of swivel angle between 270 and 900 degrees.
3. Pedal connection port.
4. Power connection.
5. USB input to connect the original controller for booting.
6. Brake pedal.
7. Accelerator pedal.

BUTTON CORRESPONDENCE TABLE

Type	PS4™	XBOX X/S™ / XBO X ONE™ Series	PC (X-INPUT)	PC (D-INPUT)
------	------	----------------------------------	--------------	--------------

Action button				1
				2
				3
				4
	R2			8
	L2			7
	L3	SL	SL	11
	R3	SR	SR	12
Directional pad	UP	UP	UP	UP
	BELOW	BELOW	BELOW	BELOW
	LEFT	LEFT	LEFT	LEFT
	RIGHT	RIGHT	RIGHT	RIGHT
Options / Menu button	OPTIONS	MENU	HOME	10
Share / View button	SHARE	VISTA	BACK	3
		SHARE button (XBOX ONE™)		14
Address	LX			
Left cam	L1	LB	LB	5
Right cam	R1	RB	RB	6
Left pedal	BBR	LT	LT	Z
Right pedal	ACCELERATE	RT	RT	Z
HOME" button	HOME	HOME" button	X-GUIDE	13

OPERATION: PEDAL OPERATION

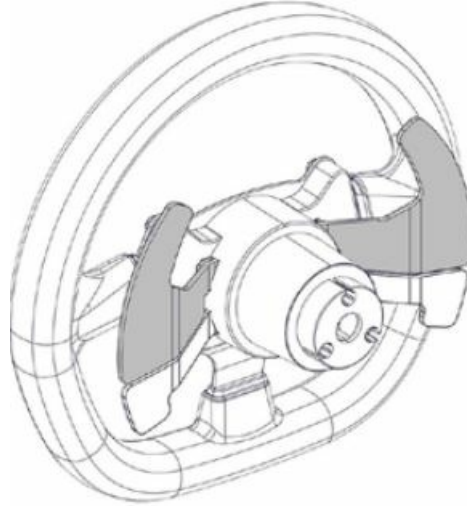
1. Connect the pedals to the connection port at the base of the steering wheel.

2. To configure the pedals enter the game and there configure its function.

The contact plates of the pedals have vertical and horizontal adjustment with two screws.

PEDAL MAPPING

- When the pedals are connected to the steering wheel, the L2 and R2 paddles lose function.
- When the pedals are not connected the L2 and R2 cams make the accelerator and brake function



CHANGE OF SWIVEL ANGLE BETWEEN 270 AND 900 DEGREES

- The user can set between 270 or 900 degrees of rotation, according to their preference using the switch located at the rear of the base of the steering wheel.
- Set the rotation angle before starting the game.



HOW TO CONNECT THE FR-FORCE STEERING WHEEL: OPERATION ON PS4

IMPORTANT! The controller and console must be turned off before connecting the steering wheel.

1. Insert the pedal cable into the corresponding port on the steering wheel.
2. Plug the micro USB cable into the original PS4 controller into the USB port on the steering wheel for connection (remember that the controller must be turned off).
3. Turn on and start the PS4 and connect the USB cable from the steering wheel base to the USB port on the console.
4. Once the connection is successfully completed, the blue steering wheel light, console light and PS4 controller light will remain lit. From that moment you can start the game and/or configure the functions of the console.
5. To play as a host on the PS4, short press the "Home" button on the steering wheel once to return to the main screen and long press (1 second) to enter the shutdown settings screen.

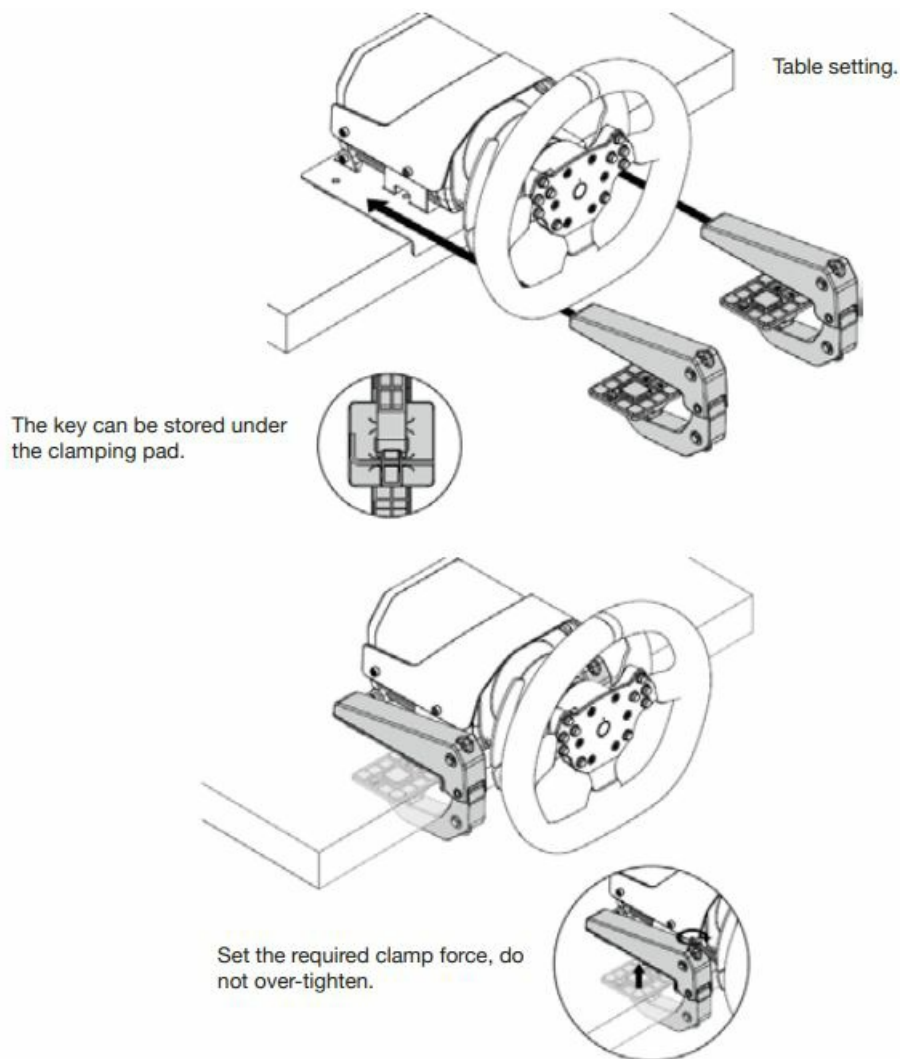
OPERATION ON XBOX Series X/S and XBOX ONE

1. Insert the pedal cable into the corresponding port on the steering wheel.
2. Connect the USB cable to the original controller into the USB port on the steering wheel for connection (remember that the controller must be turned off).
3. Turn on and start the XBOX, and connect the steering wheel via the USB cable to the USB port of the XBOX.
4. Once the connection is successfully completed, the blue steering wheel light, console light, and XBOX controller light will stay lit. From that moment you can start the game and/or configure the functions of the console.
5. To play as a host on the XBOX, short press the "Home" button on the steering wheel once to return to the main screen and long press (1 second) to enter the shutdown configuration screen.

OPERATION ON PC

1. Insert the pedal cable into the corresponding port on the steering wheel.
2. Turn on and start the computer and connect the USB cable from the steering wheel base to the USB port on the computer.
3. The default mode is D-INPUT and the red indicator light stays on. (This mode supports feedback, but requires the game to support feedback).
4. Press the HOME button for 3 seconds. When the LED flashes 3 times, switch to X-INPUT mode (this mode has no feedback function); the purple indicator light comes on continuously. Then press the mode button for 3 seconds to switch to D-INPUT mode, and so on.

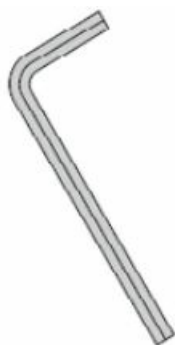
USE OF ACCESSORIES



ADJUSTMENT OF THE EQUIPMENT

Hexagon socket spanner:

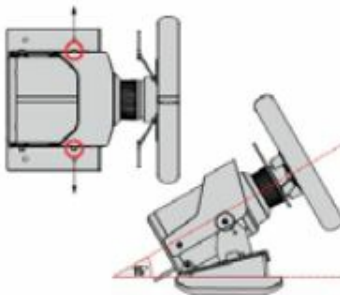
- The included tools can be used to assemble the pedals and make various ergonomic adjustments to the steering wheel and pedals.
- Be careful not to overtighten the screws to avoid damage.
- The key can be stored under the clamping platform.
- Any 4 mm hexagon spanner can be used.



Steering wheel (tilt), angle adjustment:

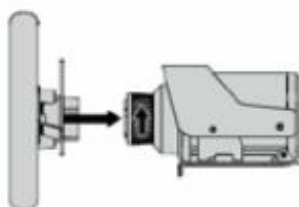
- During use, the steering wheel can be adjusted to a comfortable angle.

- The adjustment has four positions.
- If you set the angle, use the Allen key to remove the screws shown.
- Reinsert the screw and tighten to fix the position without exerting excessive force



Assembly and disassembly of the ring:

- When mounting the steering wheel, take care to properly align the inner flaps of the rim and base.
- Hold the ring and turn the locking ring to the left to mount, and to the right to disassemble.
- The ring can be removed for saving.



Carpet spike strip:

The underside of the pedal assembly is fitted with a carpet spike strip, which can be expanded by pressing the release buckle.



PROBLEM SOLVING:

- When you connect the controller to the steering wheel, the steering wheel must be turned off to prevent the connection settings between the controller, steering wheel, and console from failing.
- When the steering wheel is connected to the gaming platform and the mode light does not come on, reconnect the steering wheel or check if the joystick is working properly.
- When the steering wheel does not respond and the screen of the gaming platform does not move, the gaming platform may have unexpectedly stopped working. Restart the game platform and reconnect the steering wheel.
- When the steering wheel does not work properly in the game, restart the game platform and perform the steps specified in the “HOW TO CONNECT THE FR-FORCE STEERING WHEEL” SECTION.

PRECAUTIONS

- Avoid knocking or dropping the steering wheel. Do not disassemble, modify, or repair the steering wheel on your own.


- Do not store the steering wheel in a damp place, at high temperatures, in the presence of soot, etc.
- Prevent water or other liquids from entering the steering wheel, as this could affect the operation of the steering wheel.
- This product operates on 24 V/2 VAC power supply. Use of any other type of power supply may damage it.
- Children should use this product under adult supervision.

Downloadable content



- <https://bit.ly/frtec>
- www.blade.es
hello@blade.es
- Blade Representaciones S.L Serra de la Salut 11, N-5, 08210 Barberà del Vallès (Barcelona) ESP
- www.fr-tec.com
- hello@fr-tec.com

Documents / Resources

	<p>FR-TEC FT7015 Gaming Controller [pdf] Instruction Manual FT7015, FT7015 Gaming Controller, Gaming Controller, Controller</p>
---	---