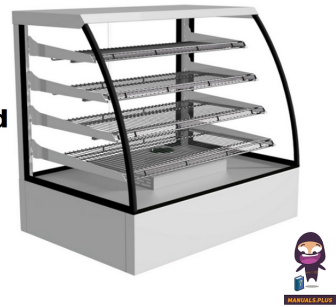


FPG
4000 Series 800
in Counter/Curved
Heated Counter



FPG INLINE 4000 Series 800 in Counter/Curved Heated Counter Owner's Manual

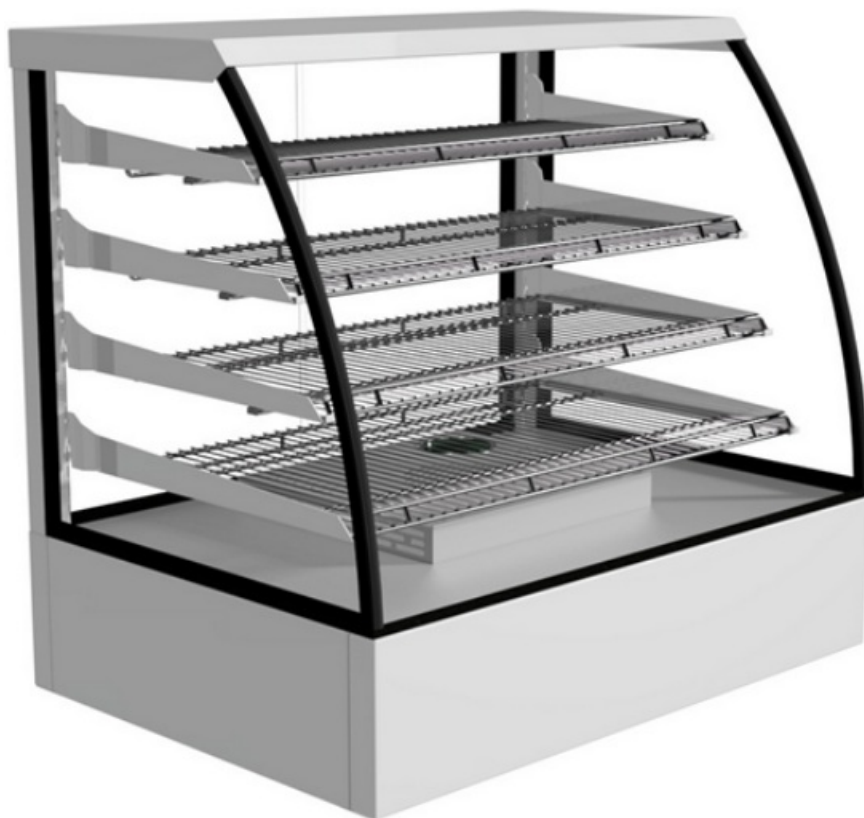
[Home](#) » [FPG](#) » FPG INLINE 4000 Series 800 in Counter/Curved Heated Counter Owner's Manual 

Contents

- [1 FPG INLINE 4000 Series 800 in Counter/Curved Heated Counter](#)
- [2 Specifications](#)
- [3 Product Usage Instructions](#)
- [4 FEATURES](#)
- [5 OPTIONS & ACCESSORIES](#)
- [6 DIMENSIONS](#)
- [7 FAQ](#)
- [8 Documents / Resources](#)
 - [8.1 References](#)



FPG INLINE 4000 Series 800 in Counter/Curved Heated Counter



Specifications

RANGE	INLINE 4000 SERIES	
TEMPERATURE	HEATED	
MODEL	IN-4H08-CU-FF-IC	IN-4H08-CU-SD-IC
FRONT	CURVED/ FIXED FRONT	CURVED/ SLIDING DOORS
INSTALLATION	IN-COUNTER	
HEIGHT	993mm	
WIDTH	803mm	
DEPTH	774mm	

TEMPERATURE RANGE	+30°C – +90°C
RECOMMENDED CORE PRODUCT TEMPERATURE	+65°C – +80°C
ENVIRONMENTAL TEST CONDITIONS	22°C / 65% RH

Product Usage Instructions

Features:

The In-Counter/Curved Heated Range offers the following features:

- Fixed Front or Sliding Doors Heated Display

- Operational Excellence
- Constructed from stainless and mild steel with toughened safety glass and double-glazed end panels for maximum energy efficiency, climate control, and durability
- Low wattage density element provides even temperature distribution
- Indicates sustainability benefits

Options & Accessories:

Contact a FPG Sales Representative for our full range of options and accessories.

Electrical Data:

- Model: IN-4H08-CU-XX-IC
- Voltage: 220-240 V Single
- Phase: 1
- Current: 6.7 A
- Mains Connection: IP 20 3 metre, 3 core cable 10 amp, 3 pin plug
- LED Lighting: 25,000 hours, 2758 lumens per meter, Natural color

Capacity, Access & Construction:

Model	Display Area	Levels	Access Front	Access Rear	Chassis Construction
IN-4H08-CU-FF-IC	0.8 m2	3 Shelves	Fixed front	Sliding doors	Stainless 304 and mild steel
IN-4H08-CU-SD-IC	0.8 m2	3 Shelves	Sliding doors	Sliding doors	Stainless 304 and mild steel

Dimensions:

- **Model:** IN-4H08-CU-XX-IC
- **Dimensions** (H x W x D mm): 993 x 803 x 774
- **Mass (Uncrated):** 107 kg

Installation Note:

Model cutout dimensions: IN-4H08-CU-XX-IC models require a 780 x 760mm benchtop cutout. Refer to the product manual for the installation guide.

For more information and technical data, refer to the Product Manual on our website. Future Products Group Ltd reserves the right to change specifications and design without notice. If you have any questions, please email us at sales@fpgworld.com or visit www.fpgworld.com for contact details.

FEATURES

- High energy efficiency: 0.62 kWh per hour (average)
- Cabinet operating temperature range +30°C – +90°C
- Recommended core product temperature +65°C – +80°C
- Smart display with toughened safety glass encased in brushed stainless steel frame

Fixed Front or Sliding Doors Heated Display

- Three tiltable, height-adjustable stainless steel wire rack shelves are full cabinet width to support maximum display capacity 25,000 hour LED lighting system at 2758 lumens per metre in cabinet top and shelves
- Unique shelf mounted ticket strip front and rear: 30mm
- Extrusion at the top of the cabinet – front only – is fitted with a stainless steel panel that can be replaced with a branded insert

Operational Excellence

- Sliding doors (staff side) and fixed front or sliding doors options (customer side)
- Constructed from stainless and mild steel with toughened safety glass and double-glazed end panels for maximum energy efficiency, climate control and durability
- Low wattage density element provides even temperature distribution
- Designed to be installed into joinery

OPTIONS & ACCESSORIES

Contact a [FPG Sales Representative](#) for our full range, including:

- **Shelf trays:** Toughened safety glass or mild steel.
- Colour and woodprint options available for steel shelf trays
- Stainless steel product trays with sides
- Stainless steel pie chutes
- Additional shelf
- Ticket strip to base: 30mm
- Branded decals/insert
- Rear door or end glass mirror application
- Forward-facing controls
- Custom joinery solution

HEATED DATA

MODEL	TEMPERATURE RANGE	RECOMMENDED CO RE PRODUCT TEMPER ATURE	ENVIRONMENTAL T EST CONDITIONS	HEATING
IN-4H08-CU- XX-IC	+30°C – +90°C	+65°C – +80°C	22°C / 65% RH	Low wattage density element

ELECTRICAL DATA

MODEL	VOLTAGE	PHASE	CURRENT	E24 H (kW h)	kWh per hour (average)	IP RATING	MAINS		LED LIGHTING		
							CONNECTION	CONNECTION PLUG1	HOURS	LUMENS	COLOR
IN-4H08-CU-XX-IC	220-240 V	Single	6.7 A	14.88	0.62	IP 20	3 metre, 3 core cable	10 amp, 3 pin plug	25,000	2758 per metre	Natural

1Please advise country to change plug specification

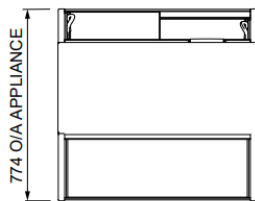
CAPACITY, ACCESS & CONSTRUCTION

MODEL	DISPLAY AREA	LEVELS	ACCESS FRONT	ACCESS REAR	CHASSIS CONSTRUCTION
IN-4H08-CU-FF-IC	0.8 m2	3 Shelves	Fixed front	Sliding doors	Stainless 304 and mild steel
IN-4H08-CU-SD-IC	0.8 m2	3 Shelves	Sliding doors	Sliding doors	Stainless 304 and mild steel

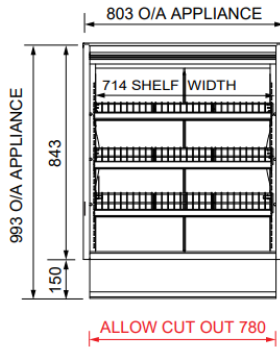
DIMENSIONS

MODEL	H x W x D mm (Uncrated)	MASS (Uncrated)
IN-4H08-CU-XX-IC	993 x 803 x 774	107 kg

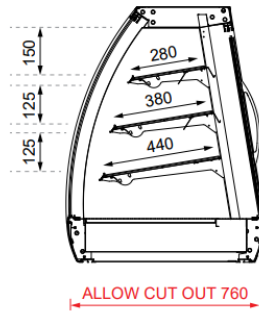
Crated weights and dimensions vary. Please contact us for information on your shipment.



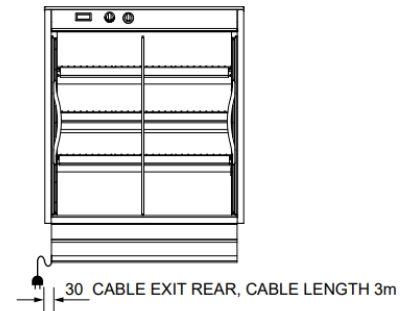
PLAN VIEW



FRONT ELEVATION



SECTION VIEW



REAR ELEVATION

Installation note;

Model cutout dimensions: IN-4H08-CU-XX-IC models require 780 x 760mm benchtop cutout (see product manual for installation guide).

More information including technical data and installation guidelines is available from the Product Manual published on our website. In line with our policy to continually develop, improve and support our products, Future Products Group Ltd reserves the right to change specifications and design without notice.

Have a question? Please email us at sales@fpgworld.com or visit www.fpgworld.com for full contact details for your region.

Worldwide contact details: FPGWORLD.COM

FAQ

Q: What is the recommended temperature range for the product?

A: The recommended core product temperature and environmental test conditions are provided in the product manual. It is crucial to adhere to these recommendations for optimal performance.


Q: How do I clean and maintain the display unit?

A: To clean the display unit, use a mild detergent and a soft cloth. Regular maintenance includes checking the heating element and ensuring proper ventilation for efficient operation.

Q: What should I do if there is an issue with the LED lighting?

A: If there is an issue with the LED lighting, please contact FPG for assistance. Avoid tampering with the electrical components without proper expertise.

Documents / Resources



[FPG INLINE 4000 Series 800 in Counter/Curved Heated Counter](#) [pdf] Owner's Manual
IN-4H08-CU-FF-IC, IN-4H08-CU-SD-IC, IN-4H08-CU-XX-IC, INLINE 4000 Series 800 in Counter Curved Heated Counter, INLINE 4000 Series, 800 in Counter Curved Heated Counter, in Counter Curved Heated Counter, Curved Heated Counter, Heated Counter, Counter

References

- [FPG Home - FPG | Food Display Solutions](#)
- [User Manual](#)

[Manuals+](#), [Privacy Policy](#)

This website is an independent publication and is neither affiliated with nor endorsed by any of the trademark owners. The "Bluetooth®" word mark and logos are registered trademarks owned by Bluetooth SIG, Inc. The "Wi-Fi®" word mark and logos are registered trademarks owned by the Wi-Fi Alliance. Any use of these marks on this website does not imply any affiliation with or endorsement.