




**INLINE 3000  
Series Bain Marie  
1500 On Counter  
Square Heated  
Display**



# FPG INLINE 3000 Series Bain Marie 1500 On Counter Square Heated Display Owner's Manual

[Home](#) » [FPG](#) » FPG INLINE 3000 Series Bain Marie 1500 On Counter Square Heated Display Owner's Manual 

## Contents

- [1 FPG INLINE 3000 Series Bain Marie 1500 On Counter Square Heated Display](#)
- [2 Product Usage Instructions](#)
- [3 FAQs](#)
- [4 SPECIFICATION](#)
- [5 FEATURES](#)
- [6 OVERVIEW](#)
- [7 OPTIONS & ACCESSORIES](#)
- [8 DIMENSIONS](#)
- [9 MORE INFORMATION](#)
- [10 Documents / Resources](#)
  - [10.1 References](#)
- [11 Related Posts](#)



**FPG INLINE 3000 Series Bain Marie 1500 On Counter Square Heated Display**



## **Product Usage Instructions**

### **Operating the Bain Marie**

1. Make sure the appliance is placed on a stable, flat surface.
2. Connect the appliance to a suitable power source using the provided cable and plug.
3. Turn on the bain-marie and set the desired temperature using the controls.
4. Wait for the bain marie to reach the recommended core product temperature before placing food inside.

### **Cleaning and Maintenance**

1. Ensure the bain marie is unplugged and completely cooled before cleaning.
2. Use a mild detergent and warm water to clean the exterior surfaces.
3. Remove and clean the pans and trays regularly to prevent buildup.
4. Refer to the product manual for detailed cleaning and maintenance instructions.

## **FAQs**

- **Q: What is the recommended core product temperature for the Bain-marie?**
  - A: The recommended core product temperature can vary based on the type of food being displayed or kept warm. It is advisable to refer to specific food safety guidelines for accurate temperature settings.
- **Q: Can I adjust the temperature range of the bain marie?**
  - A: The temperature range of this model may be adjustable. Please refer to the product manual for detailed instructions on how to modify the temperature settings.
- **Q: How can I order additional accessories for the Bain Marie?**
  - A: To order extra accessories or inquire about available options, please get in touch with an FPG Sales Representative who can provide you with a full range of accessories suitable for your needs.

## **SPECIFICATION**

<b>RANGE</b>	INLINE 3000 SERIES BAIN MARIE
<b>TEMPERATURE</b>	HEATED
<b>MODEL</b>	IN-3B15-SQ-FF-OC
<b>FRONT</b>	SQUARE/FIXED FRONT
<b>INSTALLATION</b>	ON-COUNTER
<b>HEIGHT</b>	777mm
<b>WIDTH</b>	1500mm
<b>DEPTH</b>	662mm

<b>TEMPERATURE RANGE</b>	+30°C – +110°C
<b>RECOMMENDED CORE PRODUCT TEMPERATURE</b>	+65°C – +80°C
<b>ENVIRONMENTAL TEST CONDITIONS</b>	22°C / 65% RH

## FEATURES

- High energy efficiency: 1.33 kWh per hour (average)
- Cabinet operating temperature range +30°C – +110°C Recommended core product temperature +65°C – +80°C
- Smart display with double-glazed glass finished with a black trim

### Fixed Front Heated Display

- Fitted with halogen heat lamps, with 3000-hour warm white lighting
- Supplied with 4x 1/1 gastronorm dishes 65mm deep
- Extrusions at the bottom of the cabinet – both front and rear – are fitted with stainless steel panels that can be replaced with branded inserts

### Operational Excellence

- Sliding doors (staff side) and fixed front (customer side)
- Constructed from stainless and mild steel with fully double-glazed, toughened safety glass for maximum energy efficiency, climate control, and durability
- Low wattage density element provides even temperature distribution
  - Dry operation will only
  - Positioned on countertop

## OVERVIEW

**Showing:** Inline 3000 Series Bain Marie heated 1500mm square on-counter fixed front



## OPTIONS & ACCESSORIES

Contact a [FPG Sales Representative](#) for our full range, including:

- Add a holding shelf
- Branded decals/inserts
- Rear door or end glass mirror application
- GN pans (various sizes)
- GN dividers
- Forward-facing controls
- Custom joinery solution

## HEATED DATA

MODEL	TEMPERATURE RANGE	RECOMMENDED CORE PRODUCT TEMPERATURE	ENVIRONMENTAL TEST CONDITIONS	HEATING
IN-3B15-SQ-FF-OC	+30°C – +110°C	+65°C – +80°C	22°C / 65% RH	Low wattage density element / 3x 100 watt linear halogen

## ELECTRICAL DATA

MODEL	VOLTAGE	PHASE	CURRENT	E24H (kWh)	kWh per hour (average)	IP RATING	MAINS		HEAT LAMPS	HALOGEN LIGHTING	
							CONNECTION	CONNECTION PLUG <sup>1</sup>		HOURS	COLOR
IN-3B15-SQ-FF-OC	220-240 V	Single	8.7 A	32.0	1.33	IP 22	3 metre, 3 core cable	10 amp, 3 pin plug	3x 100-watt linear halogen	3000	Warm white

<sup>1</sup>Please advise the country to change the plug specification.

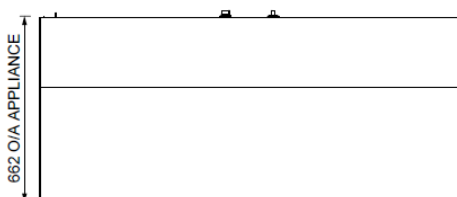
## CAPACITY, ACCESS & CONSTRUCTION

MODEL	DISPLAY AREA	NO. OF 1/1 PANS	ACCESS FRONT	ACCESS REAR	CHASSIS CONSTRUCTION
IN-3B15-SQ-FF-OC	0.6 m <sup>2</sup>	4	Fixed front	Sliding doors	Stainless 304 and mild steel

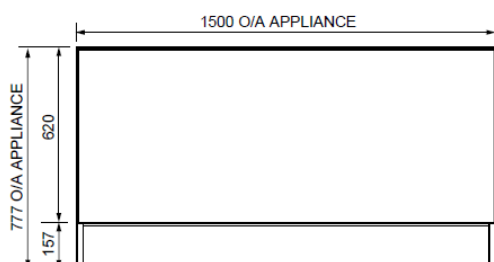
## DIMENSIONS

MODEL	H x W x D mm (Uncrated)	MASS (Uncrated)
IN-3B15-SQ-FF-OC	777 x 1500 x 662	– kg

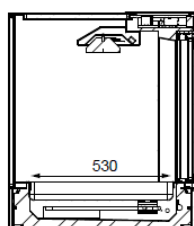
Crated weights and dimensions vary. Please contact us for information on your shipment.



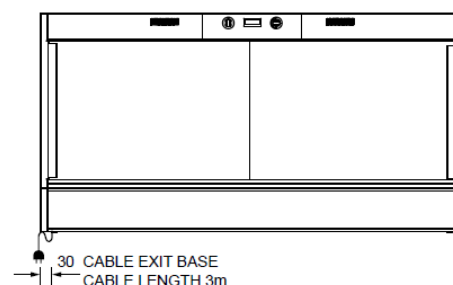
PLAN VIEW



FRONT ELEVATION



SECTION VIEW



REAR ELEVATION

## MORE INFORMATION

More information including technical data and installation guidelines is available from the Product Manual published on our website. In line with our policy to continually develop, improve and support our products, Future Products Group Ltd reserves the right to change specifications and design without notice.


**Have a question?** Please email us at [sales@fpgworld.com](mailto:sales@fpgworld.com) or visit [www.fpgworld.com](http://www.fpgworld.com) for full contact details for your region.

**Worldwide contact details:**



- [FPGWORLD.COM](http://FPGWORLD.COM)

## Documents / Resources

	<p><a href="#">FPG INLINE 3000 Series Bain Marie 1500 On Counter Square Heated Display</a> [pdf] Owner's Manual</p> <p>IN-3B15-SQ-FF-OC, INLINE 3000 Series, INLINE 3000 Series Bain Marie 1500 On Counter Square Heated Display, Bain Marie 1500 On Counter Square Heated Display, 1500 On Counter Square Heated Display, Square Heated Display, Heated Display, Display</p>
---	---

## References

-  [Home - FPG | Food Display Solutions](#)
- [User Manual](#)

[Manuals+](#), [Privacy Policy](#)

This website is an independent publication and is neither affiliated with nor endorsed by any of the trademark owners. The "Bluetooth®" word mark and logos are registered trademarks owned by Bluetooth SIG, Inc. The "Wi-Fi®" word mark and logos are registered trademarks owned by the Wi-Fi Alliance. Any use of these marks on this website does not imply any affiliation with or endorsement.