



**INLINE 3000
Series 900 In-
Counter Square
Controlled
Ambient**



FPG INLINE 3000 Series 900 In-Counter Square Controlled Ambient Owner's Manual

[Home](#) » [FPG](#) » FPG INLINE 3000 Series 900 In-Counter Square Controlled Ambient Owner's Manual 

Contents

- [1 FPG INLINE 3000 Series 900 In-Counter Square Controlled Ambient](#)
- [2 Product Usage Instructions](#)
- [3 FAQs](#)
- [4 SPECIFICATION](#)
- [5 FEATURES](#)
- [6 OVERVIEW](#)
- [7 OPTIONS & ACCESSORIES](#)
- [8 DIMENSIONS](#)
- [9 Documents / Resources](#)
 - [9.1 References](#)
- [10 Related Posts](#)



FPG INLINE 3000 Series 900 In-Counter Square Controlled Ambient



Product Usage Instructions

- **Installation:**

- Follow the product manual for installation guidelines. Ensure proper ventilation and unobstructed airflow around the unit.

- **Temperature Control:**

- Set the desired temperature using the control panel. Monitor regularly to ensure optimal storage conditions.

- **Cleaning and Maintenance:**

- Regularly clean the interior and exterior of the cabinet with a mild detergent. Check and replace any worn-out parts as needed.

- **Shelf Configuration:**

- Adjust the height of the stainless steel shelves to accommodate different display items for maximum capacity.

- **Lighting System:**

- The LED lighting system provides bright illumination. Replace any faulty bulbs promptly to maintain optimal visibility.

FAQs

- **Q: Can I change the plug specification for different countries?**

- A: Yes, please advise your country when purchasing to change the plug specification accordingly.

- **Q: How do I ensure warranty maintenance?**

- A: Maintain unobstructed airflow around the unit to ensure optimal performance and warranty coverage.
 - For more detailed technical information and guidelines, refer to the Product Manual on our website or contact us for assistance.

SPECIFICATION

RANGE	INLINE 3000 SERIES	
TEMPERATURE	CONTROLLED AMBIENT	
MODEL	IN-3CA09-SQ-FF-IC	IN-3CA09-SQ-SD-IC
FRONT	SQUARE/ FIXED FRONT	SQUARE/ SLIDING DOORS
INSTALLATION	IN-COUNTER	
REFRIGERATION	INTEGRAL, R513A	
HEIGHT	1198mm	
WIDTH	900mm	
DEPTH	662mm	

CORE PRODUCT TEMPERATURE	+16°C – +18°C
ENVIRONMENTAL TEST CONDITIONS	CLIMATE CLASS 3 25°C / 60% RH

FEATURES

- High energy efficiency: 0.22 kWh per hour (average)
- Maintains an average of +16°C – +18°C core product temperature at Climate Class 3 25°C/60%RH with up to 60 door openings per hour
 - Smart display with double-glazed glass finished with a black trim

Fixed Front or Sliding Doors Controlled Ambient Display

- Two tiltable, height-adjustable stainless steel shelves and base are full cabinet width to support maximum display capacity
- 50,000-hour LED lighting system at 2758 lumens per metre in cabinet top
- Unique shelf-mounted ticket strip front and rear: 30mm

Operational Excellence

- Sliding doors (staff side) and fixed front or sliding doors options (customer side)
- High internal humidity maintains and extends shelf life
- Constructed from stainless and mild steel with fully double-glazed, toughened safety glass for maximum energy efficiency, climate control, and durability
 - FPG Freeflow air ventilation at the rear eliminates the need for front ventilation panels
 - Designed to be installed into joinery

OVERVIEW

Showing: Inline 3000 Series controlled ambient 900mm square in-counter fixed front with integral refrigeration



OPTIONS & ACCESSORIES

Contact a [FPG Sales Representative](#) for our full range, including:

- Remote refrigeration with TX, EPR or Solenoid valves for connection
- Shelf trays: Toughened safety glass or mild steel. Color and woodprint options available for steel shelf trays
- 50,000-hour LED lighting on shelves
- Angled base insert
- Branded decals
- Rear door or end glass mirror application
- Auto Condensate Removal (ACR)
- Forward-facing controls
- Thermal divider panels
- Custom joinery solution

REFRIGERATION DATA

MODEL	CORE PRODUCT TEMPERATURE	ENVIRONMENTAL TEST CONDITIONS	REFRIGERATION	REFRIGERANT	CONDENSATE REMOVAL
IN-3CA09-SQ-XX-IC	+16°C – +18°C	Climate Class 3 – 25°C / 60% RH	Integral	R513A	Manual/ACR1

1Option.

ELECTRICAL DATA

MODEL	VOLTAGE	PHASE	CURRENT	E24 H (kW h)	kWh per hour (average)	IP RATING	MAINS		LED LIGHTING		
							CONNECTION	CONNECTION PLUG2	HOURS	LUMENS	COLOR
IN-3CA09-SQ-XX-IC	220-240 V	Single	2.8 A	5.29	0.22	IP 20	3 metre, 3 core cable	10 amp, 3 pin plug	50,000	2758 per metre	Natural
ACR (Option)			1.7 A	9.60	0.40						

2Please advise the country to change plug specification.

CAPACITY, ACCESS & CONSTRUCTION

MODEL	DISPLAY AREA	LEVELS	ACCESS FRONT	ACCESS REAR	DOOR OPENINGS @ +16°C – +18°C	CHASSIS CONSTRUCTION
IN-3CA09-SQ-FF-IC	0.83 m2	2 Shelves + Base	Fixed front	Sliding doors	60 per hour	Stainless 304 and mild steel
IN-3CA09-SQ-SD-IC	0.83 m2	2 Shelves + Base	Sliding doors	Sliding doors	60 per hour	Stainless 304 and mild steel

DIMENSIONS

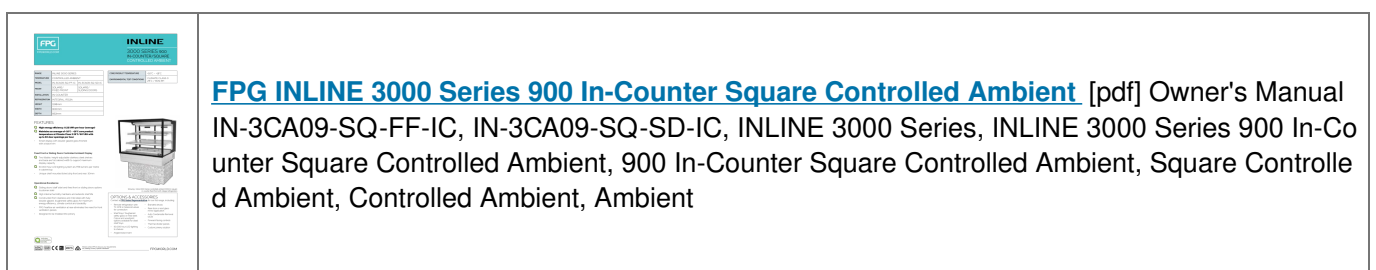
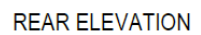
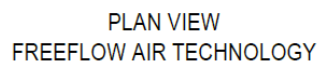
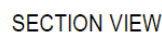
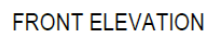
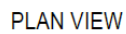
MODEL	H x W x D mm (Uncrated)	MASS (Uncrated)
IN-3CA09-SQ-XX-IC	1198 x 900 x 662	– kg

Crated weights and dimensions vary. Please contact us for information on your shipment.

Installation note;

Model cutout dimensions: IN-3CA09-SQ-XX-IC models require an 878 x 650mm benchtop cutout (see product manual for installation guide). When installing this cabinet next to an adjacent Inline 3000 Series refrigerated cabinet, please install an Inline 3000 Series thermal divider panel (accessory) between them.

UNOBSTRUCTED AIRFLOW MUST BE MAINTAINED TO ENSURE UNIT PERFORMANCE AND MAINTAIN WARRANTY.



References

-  [Home - FPG | Food Display Solutions](#)
- [User Manual](#)

[Manuals+](#), [Privacy Policy](#)

This website is an independent publication and is neither affiliated with nor endorsed by any of the trademark owners. The "Bluetooth®" word mark and logos are registered trademarks owned by Bluetooth SIG, Inc. The "Wi-Fi®" word mark and logos are registered trademarks owned by the Wi-Fi Alliance. Any use of these marks on this website does not imply any affiliation with or endorsement.