

**FPG**

**INLINE 3000  
Series 1500  
Freestanding  
Square Controlled  
Ambient**



# FPG INLINE 3000 Series 1500 Freestanding Square Controlled Ambient Owner's Manual

[Home](#) » [FPG](#) » FPG INLINE 3000 Series 1500 Freestanding Square Controlled Ambient Owner's Manual 

## Contents

- [1 FPG INLINE 3000 Series 1500 Freestanding Square Controlled Ambient](#)
- [2 Product Usage Instructions](#)
- [3 FAQs](#)
- [4 SPECIFICATION](#)
- [5 FEATURES](#)
- [6 OVERVIEW](#)
- [7 OPTIONS & ACCESSORIES](#)
- [8 DIMENSIONS](#)
- [9 MORE INFORMATION](#)
- [10 Documents / Resources](#)
  - [10.1 References](#)
- [11 Related Posts](#)



**FPG INLINE 3000 Series 1500 Freestanding Square Controlled Ambient**



## Product Usage Instructions

### Features:

The product offers high energy efficiency with an average consumption of 0.31 kWh per hour. It includes two tiltable, height-adjustable stainless steel shelves and a base that supports maximum display capacity. The cabinet features a 50,000-hour LED lighting system at 2758 lumens per meter in the cabinet top. It maintains high internal humidity to extend shelf life and is constructed from stainless and mild steel with double-glazed, toughened safety glass for energy efficiency and durability.

### Options & Accessories:

Contact an FPG Sales Representative for a full range of options and accessories to enhance your experience with the product.

### Installation:

Ensure that unobstructed airflow is maintained around the unit to guarantee optimal performance and warranty coverage. Follow the provided cutout dimensions for installation. If installed next to another Inline 3000 Series refrigerated cabinet, use a thermal divider panel between them.

## FAQs

- **Q: What are the electrical specifications of the product?**
  - A: The product operates on 220-240V single-phase voltage, drawing 3.7A current (1.7A average), with an energy consumption of 7.59 kWh per day (9.60 kWh average).
- **Q: What is the display area and construction material of the product?**
  - A: The display area is 1.45m<sup>2</sup> with 2 shelves + base. The chassis is constructed from Stainless 304 and mild steel.

## SPECIFICATION

<b>RANGE</b>	INLINE 3000 SERIES	
<b>TEMPERATURE</b>	CONTROLLED AMBIENT	
<b>MODEL</b>	IN-3CA15-SQ-FF-FS	IN-3CA15-SQ-SD-FS
<b>FRONT</b>	SQUARE/ FIXED FRONT	SQUARE/ SLIDING DOORS
<b>INSTALLATION</b>	FREESTANDING	
<b>REFRIGERATION</b>	INTEGRAL, R513A	
<b>HEIGHT</b>	1272mm	
<b>WIDTH</b>	1500mm	
<b>DEPTH</b>	662mm	

<b>CORE PRODUCT TEMPERATURE</b>	+16°C – +18°C
<b>ENVIRONMENTAL TEST CONDITIONS</b>	CLIMATE CLASS 3 25°C / 60% RH

## FEATURES

- High energy efficiency: 0.31 kWh per hour (average)
- Maintains an average of +16°C – +18°C core product temperature at Climate Class 3 25°C/60%RH with up to 60 door openings per hour
  - Smart display with double-glazed glass finished with a black trim

### Fixed Front or Sliding Doors Controlled Ambient Display

- Two tiltable, height-adjustable stainless steel shelves and base are full cabinet width to support maximum display capacity
- 50,000-hour LED lighting system at 2758 lumens per metre in cabinet top
  - Unique shelf-mounted ticket strip front and rear: 30mm

### Operational Excellence

- Sliding doors (staff side) and fixed front or sliding doors options (customer side)
- High internal humidity maintains and extends shelf life
- Constructed from stainless and mild steel with fully double-glazed, toughened safety glass for maximum energy efficiency, climate control, and durability
  - FPG Freeflow air ventilation at the rear eliminates the need for front ventilation panels
  - Fitted with adjustable 150mm legs (+30mm adjustment)

OVERVIEW



**Showing:** Inline 3000 Series controlled ambient 1500mm square freestanding fixed front with integral refrigeration

OPTIONS & ACCESSORIES

Contact a [FPG Sales Representative](#) for our full range, including:

- Remote refrigeration with TX, EPR, or Solenoid valves for connection
- Shelf trays: Toughened safety glass or mild steel. Color and wood print options available for steel shelf trays
- 50,000-hour LED lighting to shelves
- Angled base insert
- Branded decals
- Rear door or end glass mirror application
- Auto Condensate Removal (ACR)
- Adjustable 100mm legs (+25mm adjustment), lockable castors or unidirectional rollers
- Forward-facing controls
- Rear deck assemblies
- Thermal divider panels
- Custom joinery solution

REFRIGERATION DATA

MODEL	CORE PRODUCT TEMPERATURE	ENVIRONMENTAL TEST CONDITIONS	REFRIGERATION	REFRIGERANT	CONDENSATE REMOVAL
IN-3CA15-SQ-XX-FS	+16°C – +18°C	Climate Class 3 – 25°C / 60% RH	Integral	R513A	Manual/ACR1

1Option.

ELECTRICAL DATA

MODEL	VOLTAGE	PHASE	CURRENT	E24 H (kW h)	kWh per hour (average)	IP RATING	MAINS		LED LIGHTING		
							CONNECTION	CONNECTION PLUG2	HOURS	LUMENS	COLOR
IN-3CA15-SQ-XX-FS	220-240 V	Single	3.7 A	7.59	0.31	IP 20	3 metre, 3 core cable	10 amp, 3 pin plug	50,000	2758 per metre	Natural
ACR (Option)			1.7 A	9.60	0.40						

2Please advise the country to change plug specification.

## CAPACITY, ACCESS & CONSTRUCTION

MODEL	DISPLAY AREA	LEVELS	ACCESS FRONT	ACCESS REAR	DOOR OPENINGS @ +16°C – +18°C	CHASSIS CONSTRUCTION
IN-3CA15-SQ-FF-FS	1.45 m2	2 Shelves + Base	Fixed front	Sliding doors	60 per hour	Stainless 304 and mild steel
IN-3CA15-SQ-SD-FS	1.45 m2	2 Shelves + Base	Sliding doors	Sliding doors	60 per hour	Stainless 304 and mild steel

## DIMENSIONS

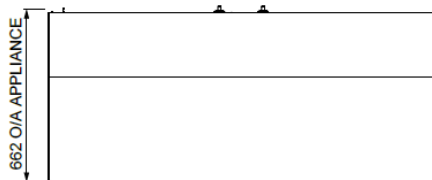
MODEL	H x W x D mm (Uncrated)	MASS (Uncrated)
IN-3CA15-SQ-XX-FS	1272 x 1500 x 662	– kg

Crated weights and dimensions vary. Please contact us for information on your shipment.

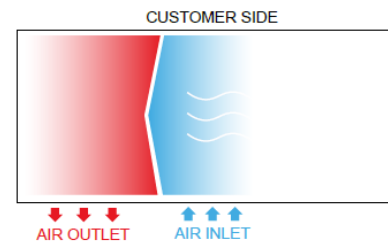
### Installation note;

**Model cutout dimensions:** IN-3CA15-SQ-XX-FS models require a 1508 x 668mm benchtop cutout. Joinery height 652mm (see product manual for installation guide). When installing this cabinet next to an adjacent Inline 3000 Series refrigerated cabinet, please install an Inline 3000 Series thermal divider panel (accessory) between them.

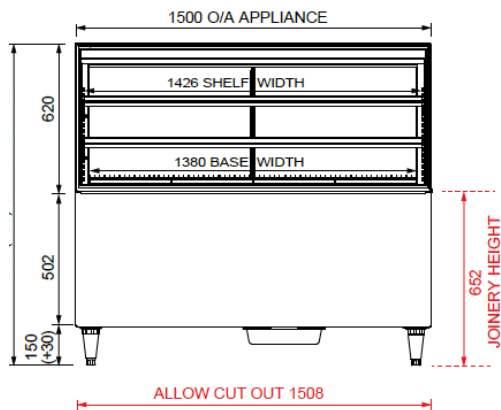
UNOBSTRUCTED AIRFLOW MUST BE MAINTAINED TO ENSURE UNIT PERFORMANCE AND MAINTAIN WARRANTY.



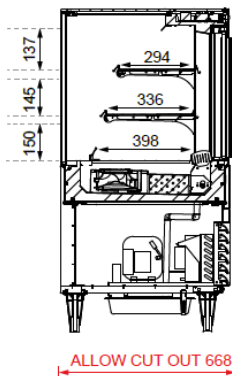
PLAN VIEW



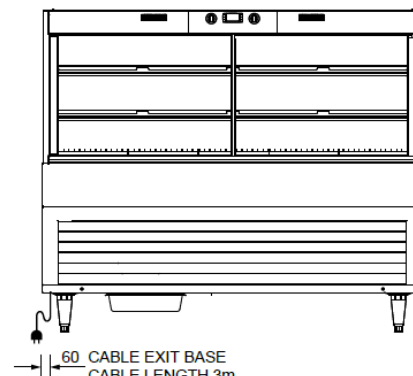
PLAN VIEW  
FREEFLOW AIR TECHNOLOGY



FRONT ELEVATION



SECTION VIEW



REAR ELEVATION

## MORE INFORMATION

More information including technical data and installation guidelines is available from the Product Manual published on our website. In line with our policy to continually develop, improve and support our products, Future Products Group Ltd reserves the right to change specifications and design without notice.

**Have a question?** Please email us at [sales@fpgworld.com](mailto:sales@fpgworld.com) or visit [www.fpgworld.com](http://www.fpgworld.com) for full contact details for your region.

**Worldwide contact details:** [FPGWORLD.COM](http://FPGWORLD.COM)



## Documents / Resources

	<p><b><a href="#">FPG INLINE 3000 Series 1500 Freestanding Square Controlled Ambient</a></b> [pdf] Owner's Manual</p> <p>INLINE 3000 Series, INLINE 3000 Series 1500 Freestanding Square Controlled Ambient, 1500 Freestanding Square Controlled Ambient, Square Controlled Ambient, Controlled Ambient, Ambient</p>
--	--

## References

-  [Home - FPG | Food Display Solutions](#)
- [User Manual](#)

[Manuals+](#), [Privacy Policy](#)

This website is an independent publication and is neither affiliated with nor endorsed by any of the trademark owners. The "Bluetooth®" word mark and logos are registered trademarks owned by Bluetooth SIG, Inc. The "Wi-Fi®" word mark and logos are registered trademarks owned by the Wi-Fi Alliance. Any use of these marks on this website does not imply any affiliation with or endorsement.