



**3000 Series
1500 Inline On-
Counter
Curved Heated**



FPG 3000 Series 1500 Inline On-Counter Curved Heated Owner's Manual

[Home](#) » [FPG](#) » FPG 3000 Series 1500 Inline On-Counter Curved Heated Owner's Manual 

Contents

- [1 FPG 3000 Series 1500 Inline On-Counter Curved Heated](#)
- [2 Product Usage Instructions](#)
- [3 FAQs](#)
- [4 SPECIFICATION](#)
- [5 FEATURES](#)
- [6 OPTIONS & ACCESSORIES](#)
- [7 DIMENSIONS](#)
- [8 MORE INFORMATION](#)
- [9 Documents / Resources](#)
 - [9.1 References](#)
- [10 Related Posts](#)



FPG 3000 Series 1500 Inline On-Counter Curved Heated



Product Usage Instructions

- **Installation**

- Place the heated display on a flat, stable surface with proper ventilation.

- **Temperature Control**

- Set the desired core product temperature according to your requirements using the temperature control settings.

- **Cleaning and Maintenance**

- Regularly clean the display area and shelves with a mild detergent and soft cloth. Ensure the unit is disconnected from power before cleaning.

FAQs

- **Q: What should I do if the display is not heating up?**

- A: Check the power connection and temperature settings. If issues persist, contact our customer support for assistance.

- **Q: Can I adjust the height of the shelves?**

- A: Yes, the shelves are height-adjustable to accommodate different product sizes.

SPECIFICATION

RANGE	INLINE 3000 SERIES	
TEMPERATURE	HEATED	
MODEL	IN-3H15-CU-FF-OC	IN-3H15-CU-SD-OC
FRONT	CURVED/ FIXED FRONT	CURVED/ SLIDING DOORS
INSTALLATION	ON-COUNTER	
HEIGHT	770mm	
WIDTH	1503mm	
DEPTH	663mm	

TEMPERATURE RANGE	+30°C – +90°C
RECOMMENDED CORE PRODUCT TEMPERATURE	+65°C – +80°C
ENVIRONMENTAL TEST CONDITIONS	22°C / 65% RH

FEATURES

- High energy efficiency: 1.3 kWh per hour (average)
- Cabinet operating temperature range +30°C – +90°C Recommended core product temperature +65°C – +80°C
 - Smart display with toughened safety glass encased in brushed stainless steel frame

Fixed Front or Sliding Doors Heated Display

- Three tiltable, height-adjustable stainless steel wire rack shelves are full cabinet width to support maximum display capacity
- 25,000-hour LED lighting system at 2758 lumens per meter in cabinet top
 - Unique shelf-mounted ticket strip front and rear: 30mm
 - Extrusions at the top and bottom of the cabinet – front only – are fitted with stainless steel panels that can be replaced with branded inserts

Operational Excellence

- Sliding doors (staff side) and fixed front or sliding doors options (customer side)
- Constructed from stainless and mild steel with toughened safety glass and double-glazed end panels for maximum energy efficiency, climate control and durability

- Low wattage density element provides even temperature distribution
 - Positioned on countertop

Showing: Inline 3000 Series heated 1500mm curved on-counter fixed front

OPTIONS & ACCESSORIES

Contact a [FPG Sales Representative](#) for our full range, including

- Shelf trays: Toughened safety glass or mild steel. Color and woodprint options available for steel shelf trays
- Stainless steel product trays with sides
- Stainless steel pie chutes
- Additional shelf
- Ticket strip to the base: 30mm
- 25,000-hour LED lighting on shelves
- Branded decals/insert
- Rear door or end glass mirror application
- Forward-facing controls
- Custom joinery solution

HEATED DATA

MODEL	TEMPERATURE RANGE	RECOMMENDED CORE PRODUCT TEMPERATURE	ENVIRONMENTAL TEST CONDITIONS	HEATING
IN-3H15-CU-XX-OC	+30°C – +90°C	+65°C – +80°C	22°C / 65% RH	Low wattage density element

ELECTRICAL DATA

MODEL	VOLTAGE	PHASE	CURRENT	E24 H (kW h)	kWh per hour (average)	IP RATING	MAINS		LED LIGHTING		
							CONNECTION	CONNECTION PLUG1	HOURS	LUMENS	COLOR
IN-3H15-CU-XX-OC	220-240 V	Single	7.7 A	31.2	1.3	IP 20	3 metre, 3 core cable	10 amp, 3 pin plug	25,000	2758 per metre	Natural

¹Please advise country to change plug specification

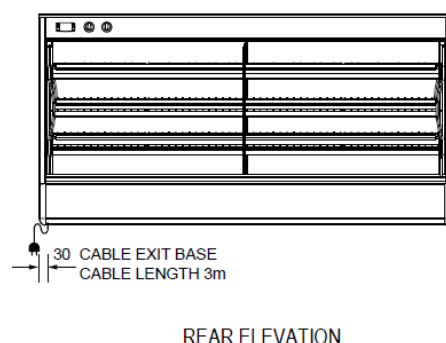
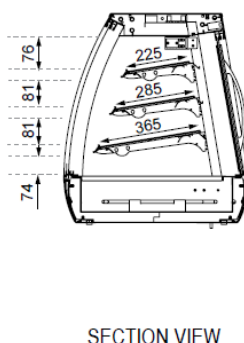
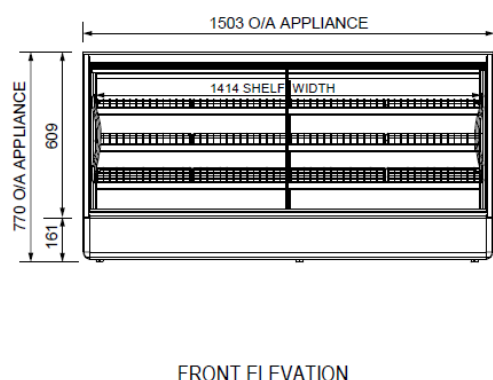
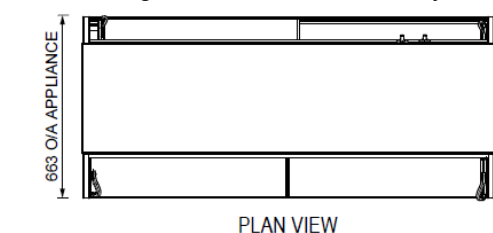
CAPACITY, ACCESS & CONSTRUCTION

MODEL	DISPLAY AREA	LEVELS	ACCESS FRONT	ACCESS REAR	CHASSIS CONSTRUCTION
IN-3H15-CU-FF-OC	1.2 m2	3 Shelves	Fixed front	Sliding doors	Stainless 304 and mild steel
IN-3H15-CU-SD-OC	1.2 m2	3 Shelves	Sliding doors	Sliding doors	Stainless 304 and mild steel

DIMENSIONS

MODEL	H x W x D mm (Uncrated)	MASS (Uncrated)
IN-3H15-CU-XX-OC	770 x 1503 x 663	122 kg

Crated weights and dimensions vary. Please contact us for information on your shipment.



MORE INFORMATION


More information including technical data and installation guidelines is available from the Product Manual published on our website. In line with our policy to continually develop, improve and support our products, Future Products Group Ltd reserves the right to change specifications and design without notice.

Have a question? Please email us at sales@fpgworld.com or visit www.fpgworld.com for full contact details for your region.

Worldwide contact details:



Documents / Resources

	<p>FPG 3000 Series 1500 Inline On-Counter Curved Heated [pdf] Owner's Manual IN-3H15-CU-FF-OC, IN-3H15-CU-SD-OC, IN-3H15-CU-XX-OC, 3000 Series 1500 Inline On-Counter Curved Heated, 3000 Series, 1500 Inline On-Counter Curved Heated, On-Counter Curved Heated, Curved Heated</p>
---	---

References

- [FPG Home - FPG | Food Display Solutions](#)
- [User Manual](#)

[Manuals+](#), [Privacy Policy](#)

This website is an independent publication and is neither affiliated with nor endorsed by any of the trademark owners. The "Bluetooth®" word mark and logos are registered trademarks owned by Bluetooth SIG, Inc. The "Wi-Fi®" word mark and logos are registered trademarks owned by the Wi-Fi Alliance. Any use of these marks on this website does not imply any affiliation with or endorsement.