



FPC SECURITY FPC-5850 Access Control Kit Instructions

[Home](#) » [FPC SECURITY](#) » FPC SECURITY FPC-5850 Access Control Kit Instructions 

Contents

- [1 FPC SECURITY FPC-5850 Access Control Kit](#)
- [2 INSTALLATION DIAGRAM FOR OUTDOOR BIOMETRIC AND CARD READER, MAGLOCK AND EXIT BUTTON](#)
- [3 ATTENTION! QUICK TIPS, MUST READ BEFORE INSTALLING](#)
- [4 Documents / Resources](#)
- [5 Related Posts](#)

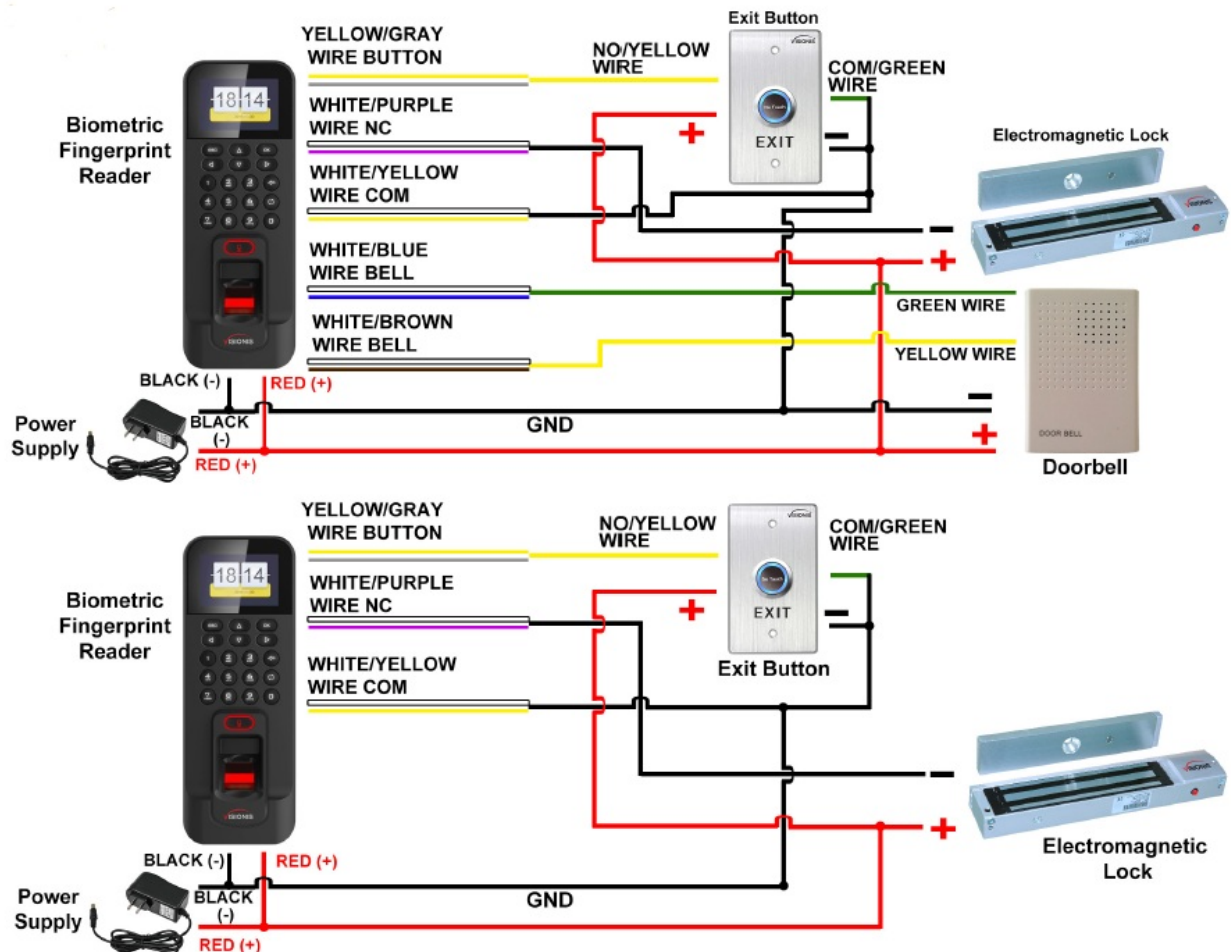


FPC SECURITY FPC-5850 Access Control Kit



INSTALLATION DIAGRAM FOR OUTDOOR BIOMETRIC AND CARD READER, MAGLOCK AND EXIT BUTTON

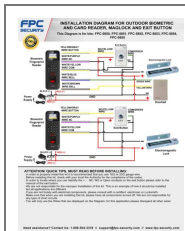
This Diagram is for kits: FPC-5850, FPC-5851, FPC-5852, FPC-5853, FPC-5854, FPC-5855



ATTENTION! QUICK TIPS, MUST READ BEFORE INSTALLING

- In order to properly install this kit it is recommended that you use 18/2 or 20/2 gauge wire .
- Before installing this kit, check with your local fire Authority for the compliance of fire codes .
- In order to locate where you can Identify the+, – NC, NO or Open contacts on the exit button please refer to the manual of the exit button .
- We are not responsible for the improper Installation of this kit. This is an example of how it should be installed but all applications are different.
- If you are not handy with electrical components, please consult with a certified electrician or Locksmith .
- Make sure that when you are installing this kit, please have all components turned off. We are not responsible for any type of short circuits .
- You will only use the Wires that are displayed on the Diagram, for this application please disregard all other wires Need assistance? Contact Us: 1-888-504-3318 || support@fpc-security.com || www.fpc-security.com

Documents / Resources



[FPC SECURITY FPC-5850 Access Control Kit](#) [pdf] Instructions

FPC-5850, FPC-5851, FPC-5852, FPC-5853, FPC-5850 Access Control Kit, FPC-5850, Access Control Kit, FPC-5854, FPC-5855