

Foxwell®
T2000Pro
TPMS Service
Tool



Foxwell T2000Pro TPMS Service Tool User Guide

[Home](#) » [Foxwell](#) » Foxwell T2000Pro TPMS Service Tool User Guide 

Contents

- [1 Foxwell T2000Pro TPMS Service Tool](#)
- [2 To Register Through Website](#)
- [3 Serial Number](#)
- [4 Register by Scanning QR Code](#)
- [5 TPMS Sensor Activation](#)
- [6 Battery Charging](#)
- [7 TPMS Sensor Programming](#)
- [8 Update](#)
- [9 Documents / Resources](#)
 - [9.1 References](#)
- [10 Related Posts](#)



Foxwell T2000Pro TPMS Service Tool



To Register Through Website

1. Visit Foxwell website www.foxwelltech.us and press Register icon, or go to the registration page by selecting Support from home page and then click Register.
2. Enter one of your email addresses as your user ID and click the Send Code button. Find the security code in your mailbox, input the code, create a password and click Free Registration to complete.
3. Sign in to the Member Center, click New Registration, input the right serial number and click Submit to activate the product. (Password is not required)



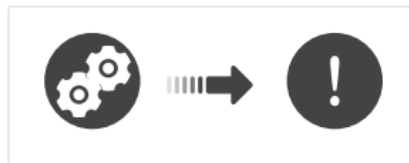
Serial Number

To find the serial number:

1. On the back of the main unit.

TPMS Service Tool
 Rated input 8-18V DC
 Operating temperature 0°C-60°C
 Storage temperature -20°C-70°C
 CE FC T1000XXXXX

2. In the scanner About page.



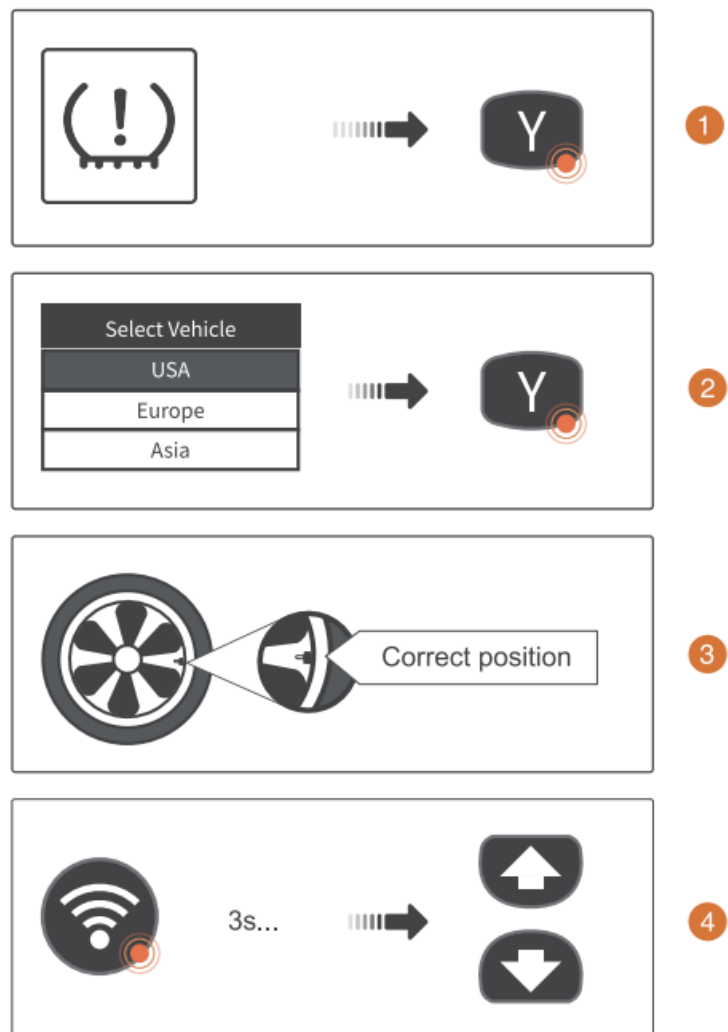
Register by Scanning QR Code

1. Enter Update and connect WIFI, then scan the QR code to register.
2. Scan the QR code and enter your own email address. Click "Send code" to find the verification code in your mailbox.
3. Create a password and then click "Free registration" to complete.
4. After logging in successfully, click the Submit button to complete product registration when the serial number shows automatically or input correct serial number manually.



TPMS Sensor Activation

1. Highlight TPMS from the main menu and select the vehicle model as need.
2. Select Trigger from the available menu.
3. Place the tool to the correct position to ensure sensor activation and decode.
4. Press Activate to test the TPMS. If test passes, TPMS data will be briefly displayed for 3 seconds.

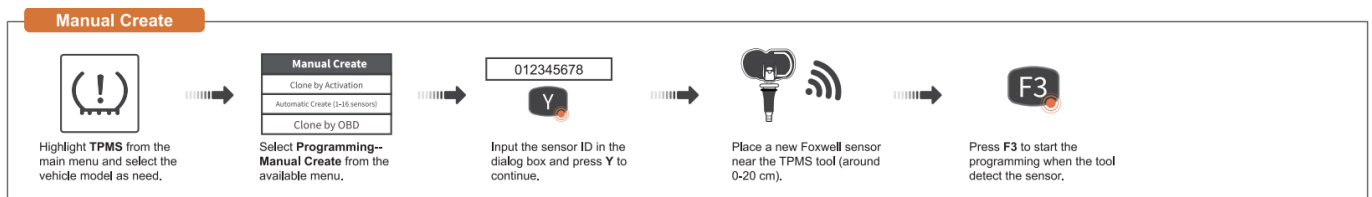


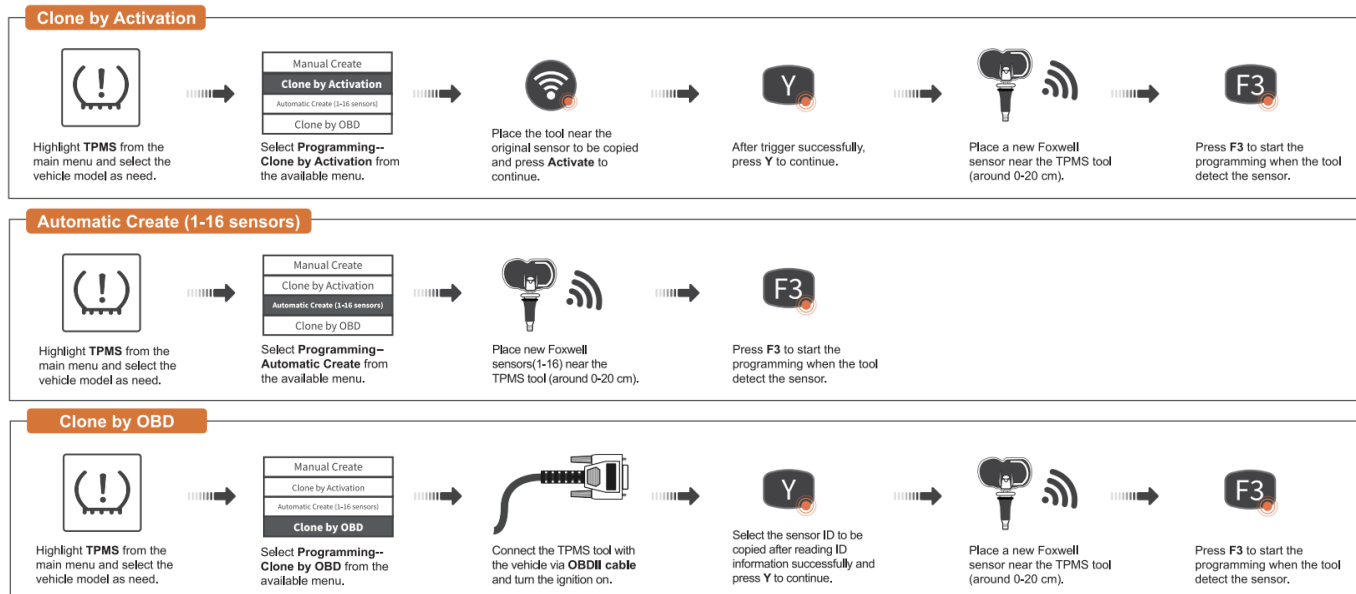
Battery Charging

The scanner has a built-in lithium-ion polymer rechargeable battery.
The unit charges on any of the following sources:



TPMS Sensor Programming

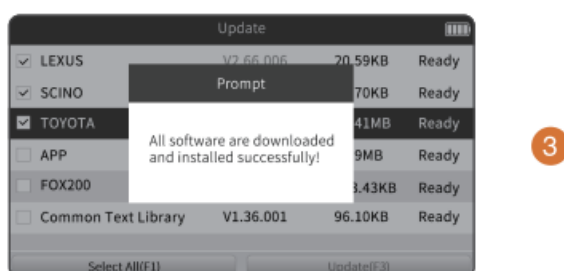
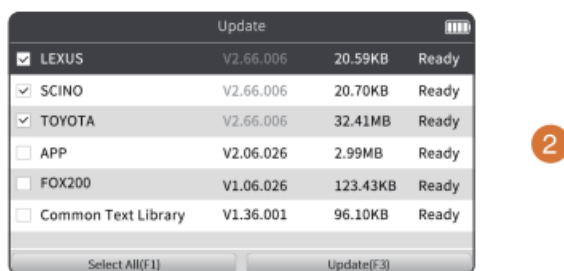
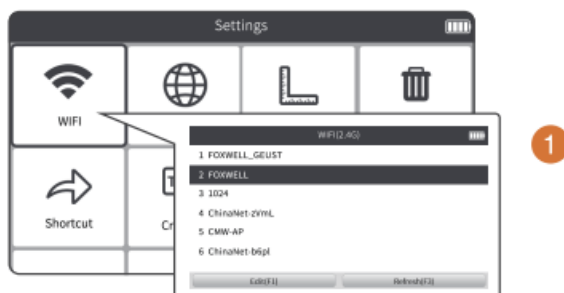




Update

Before updating, please make sure you have created a Foxwell ID and your network works correctly.

1. Enter Update and select an available WIFI to connect.
2. Choose the software you wish to update and click the Update or Select All button to download.
3. When all are updated, an "All software downloads are successfully installed!" message displays.




Contact Us

For service and support, please contact us.

Website : www.foxwelltech.us
E-mail: support@foxwelltech.com
Service Number: + 86 – 755 – 26697229
Fax: + 86 – 755 – 26897226



Documents / Resources

	Foxwell T2000Pro TPMS Service Tool [pdf] User Guide T2000Pro, T2000Pro TPMS Service Tool, T2000Pro Service Tool, TPMS Service Tool, Service Tool, TPMS Service, TPMS, Service
---	--

References

- [User Manual](#)

Manuals+, Privacy Policy

This website is an independent publication and is neither affiliated with nor endorsed by any of the trademark owners. The "Bluetooth®" word mark and logos are registered trademarks owned by Bluetooth SIG, Inc. The "Wi-Fi®" word mark and logos are registered trademarks owned by the Wi-Fi Alliance. Any use of these marks on this website does not imply any affiliation with or endorsement.