

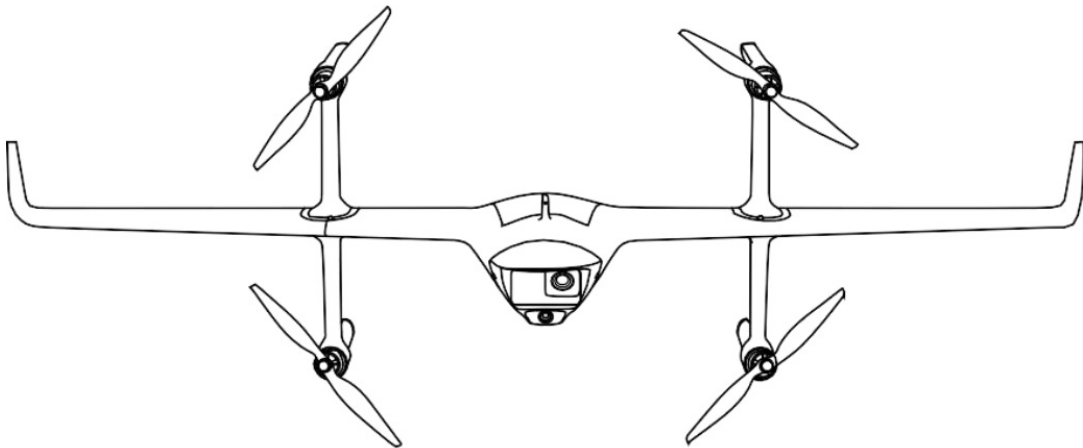


FOXTECH H-Wing PRO Vtol Dual Camera Mapping Combo User Guide

[Home](#) » [FOXTECH](#) » FOXTECH H-Wing PRO Vtol Dual Camera Mapping Combo User Guide 

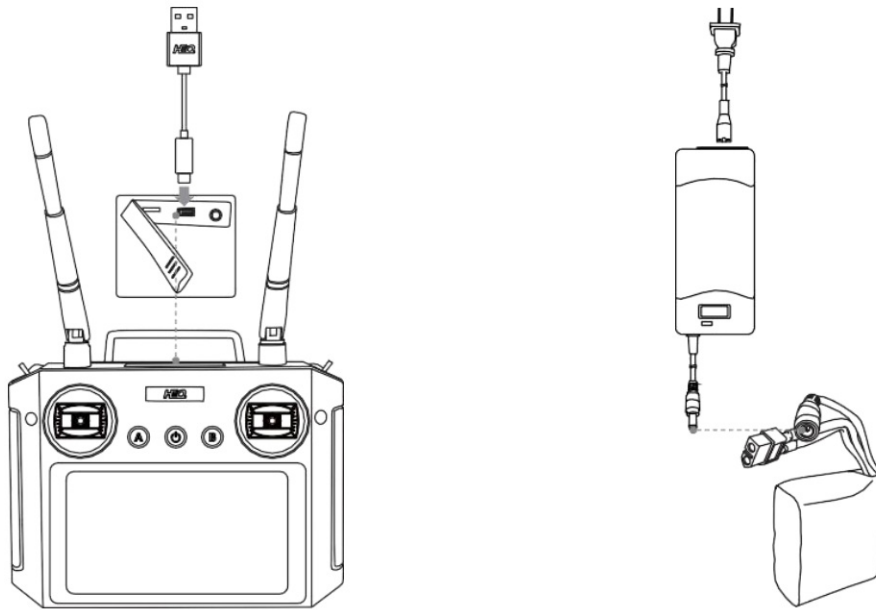


H-Wing PRO
Quick Start Guide
V2.1 2021.6



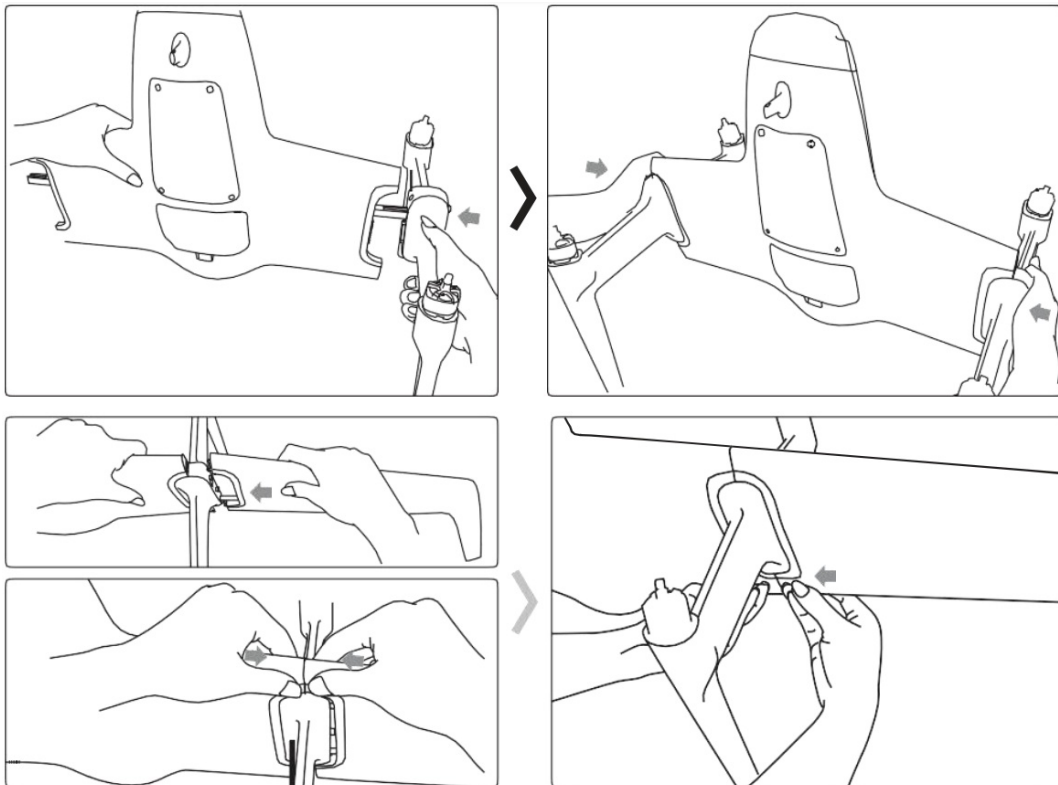
Charging the Battery

1 充电 /Charging the Battery

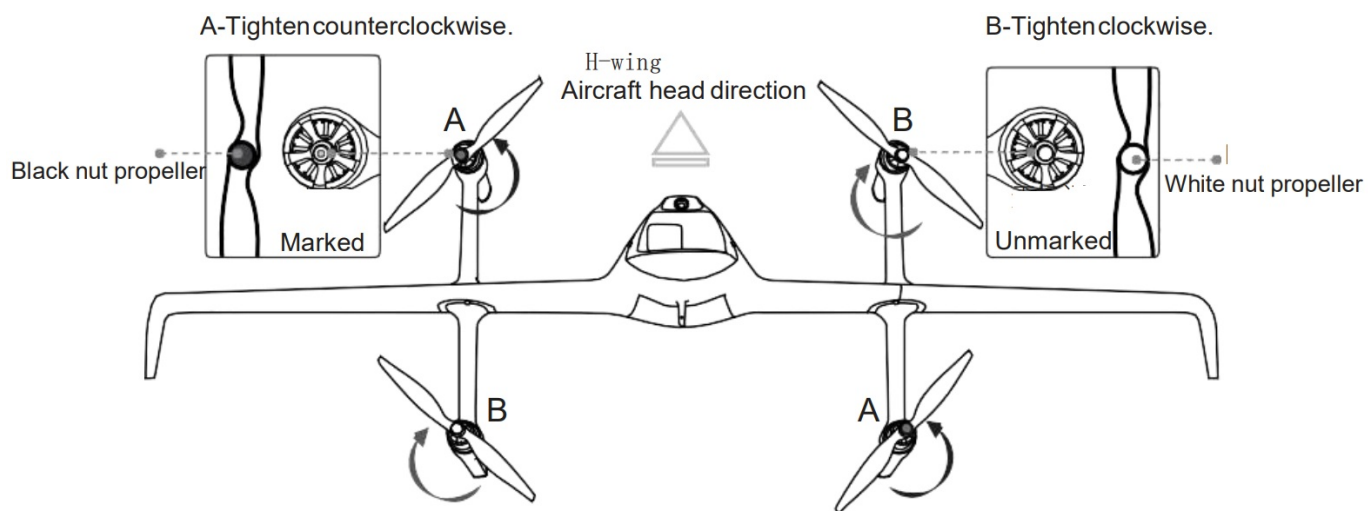


Please connect your charger with a type-C data cable to charge the remote control.

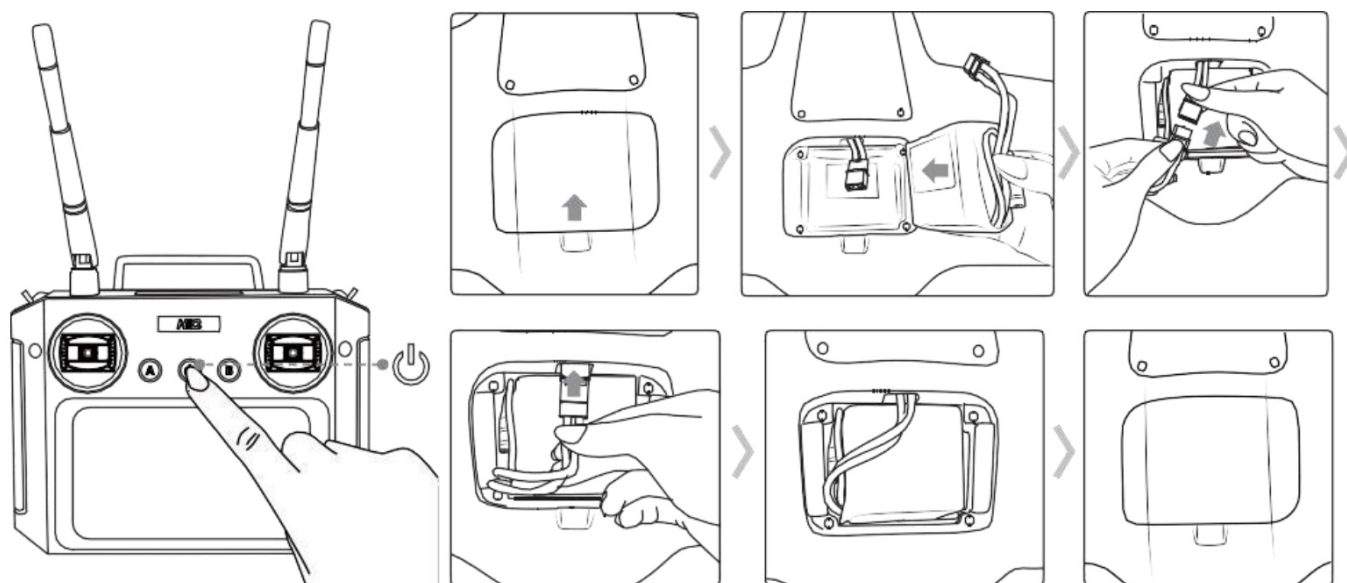
Assemble the drone



Attaching the Propellers

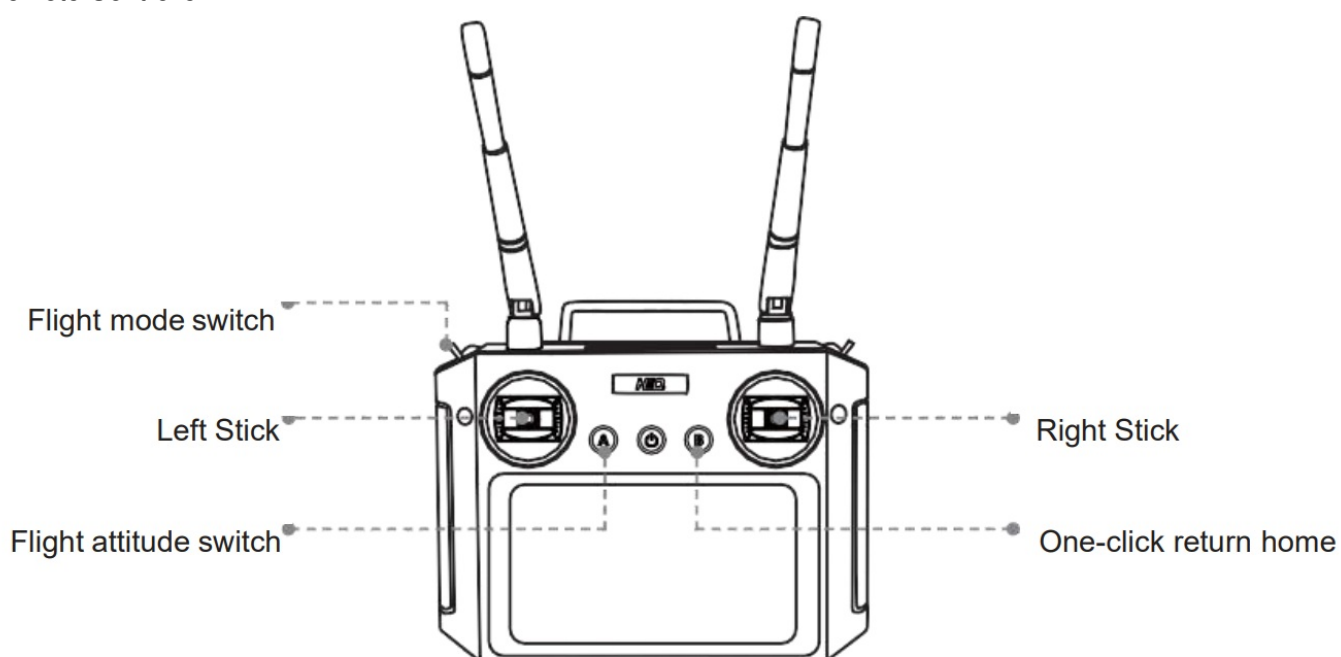


Open and close the remote control, Install the battery



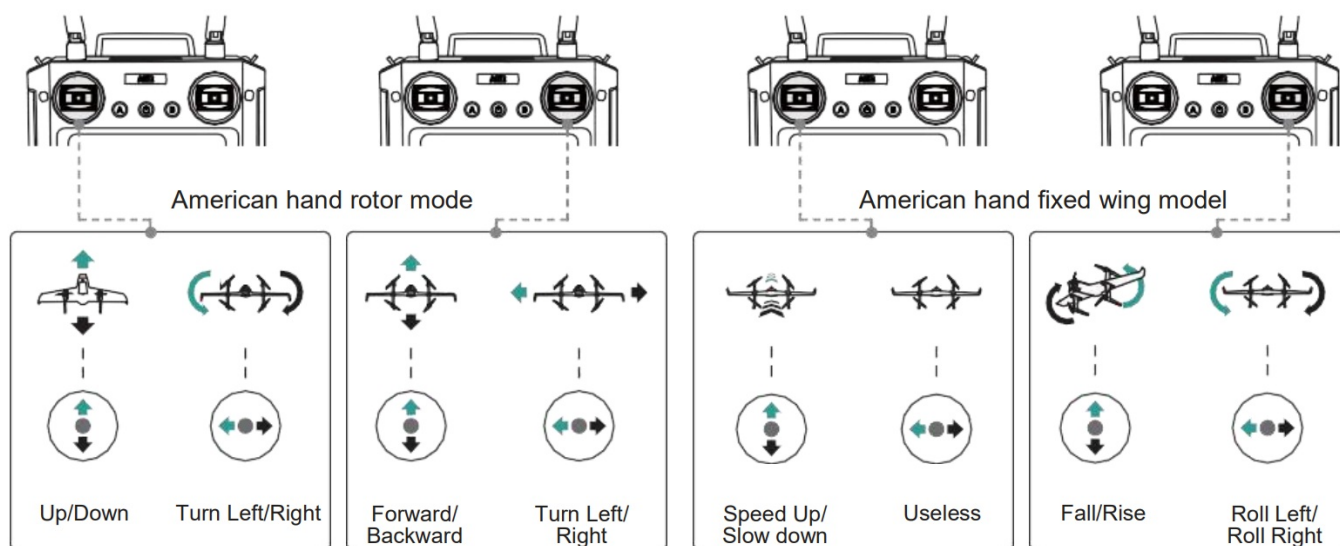
Long press to start/shut down.

Remote Controller

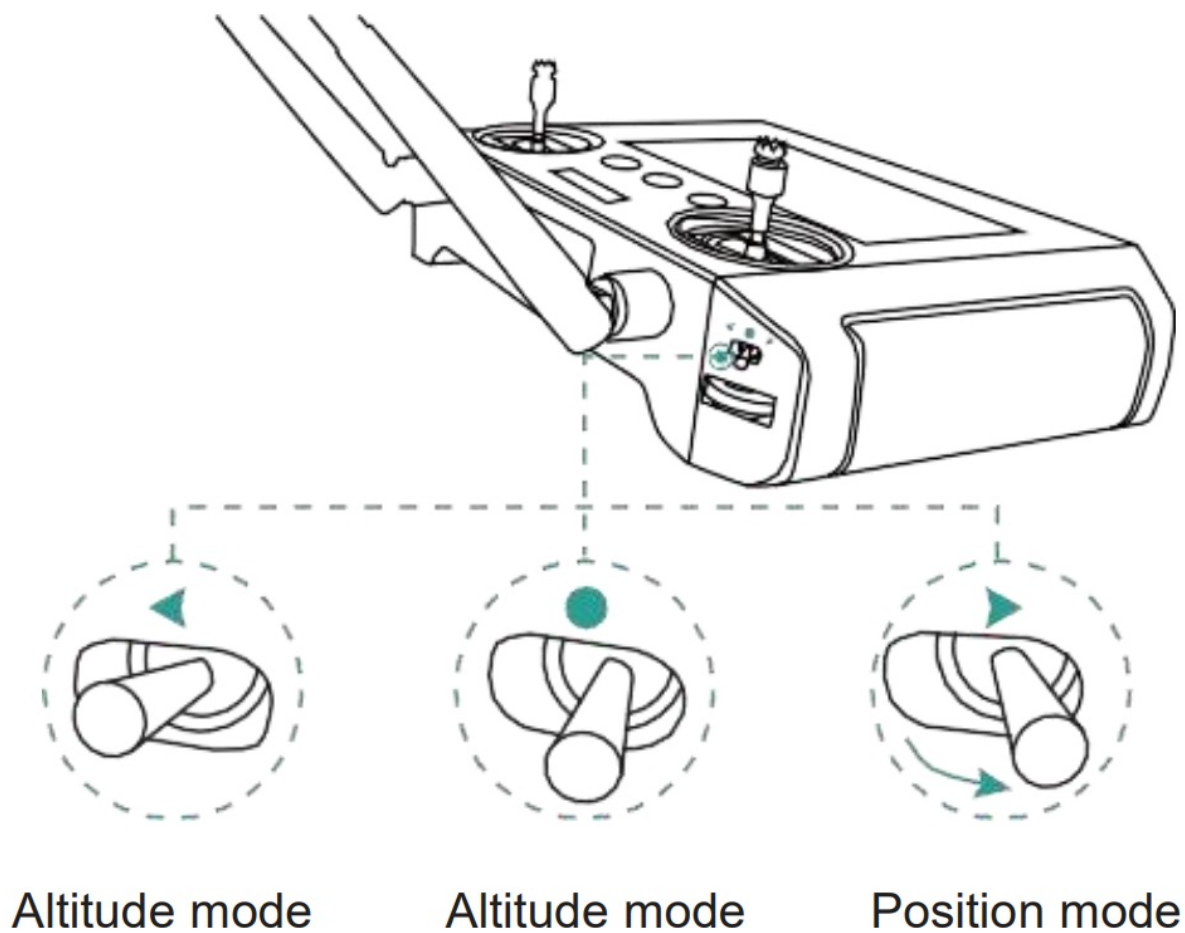


Controlling the drone

Controlling the drone

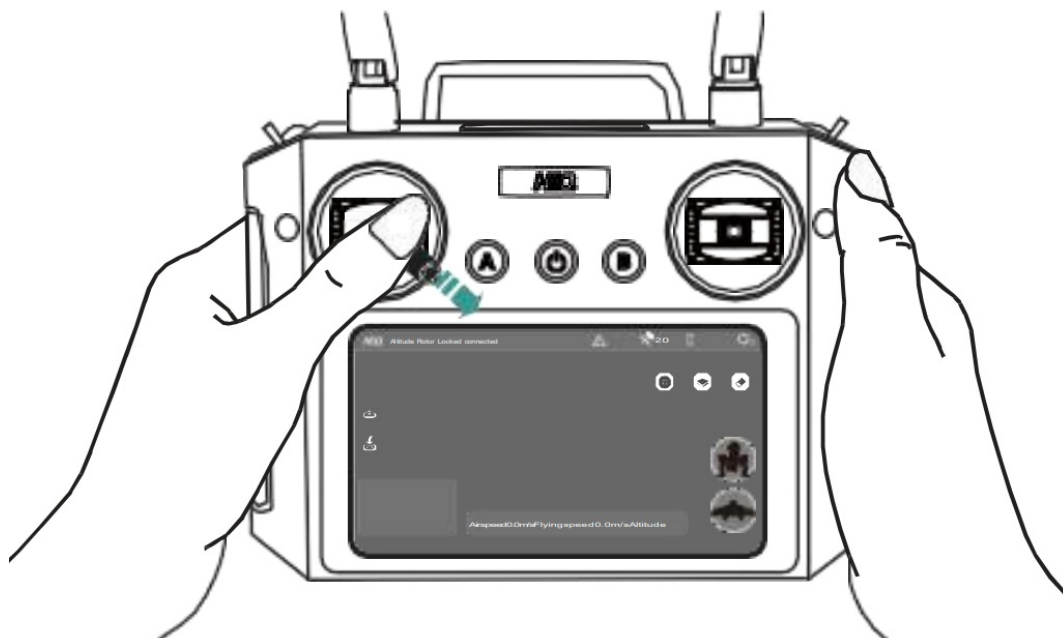


Enter position mode



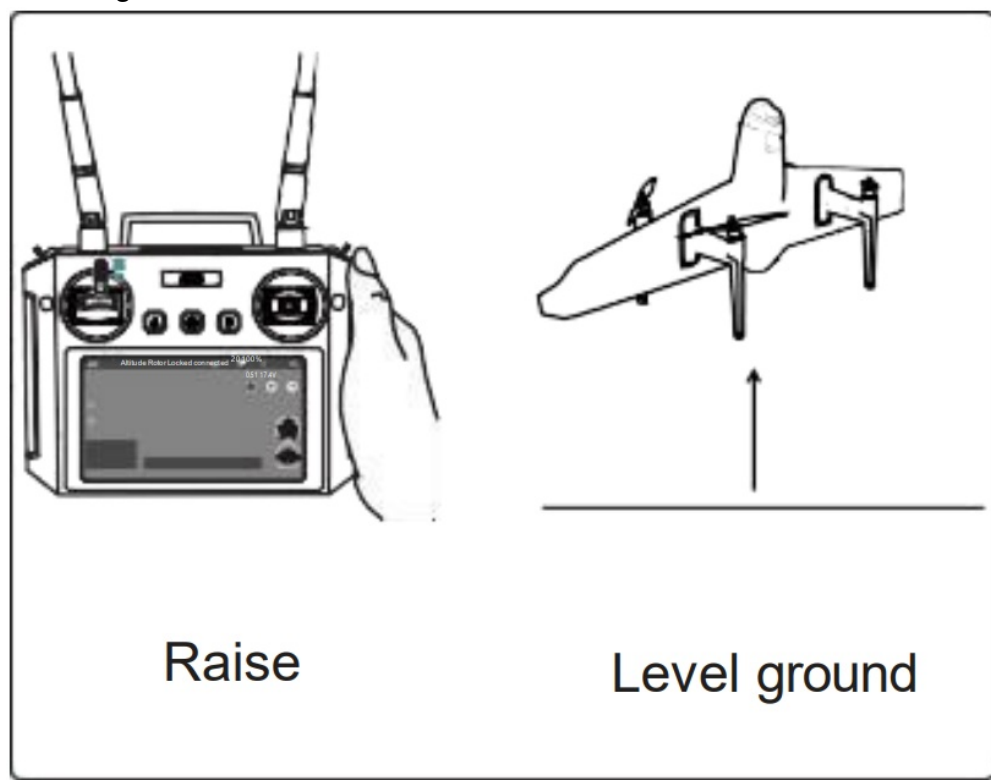
In an open outdoor environment, move the remote control to the left and wait for the aircraft to enter the position mode.

How to unlock(US hand)

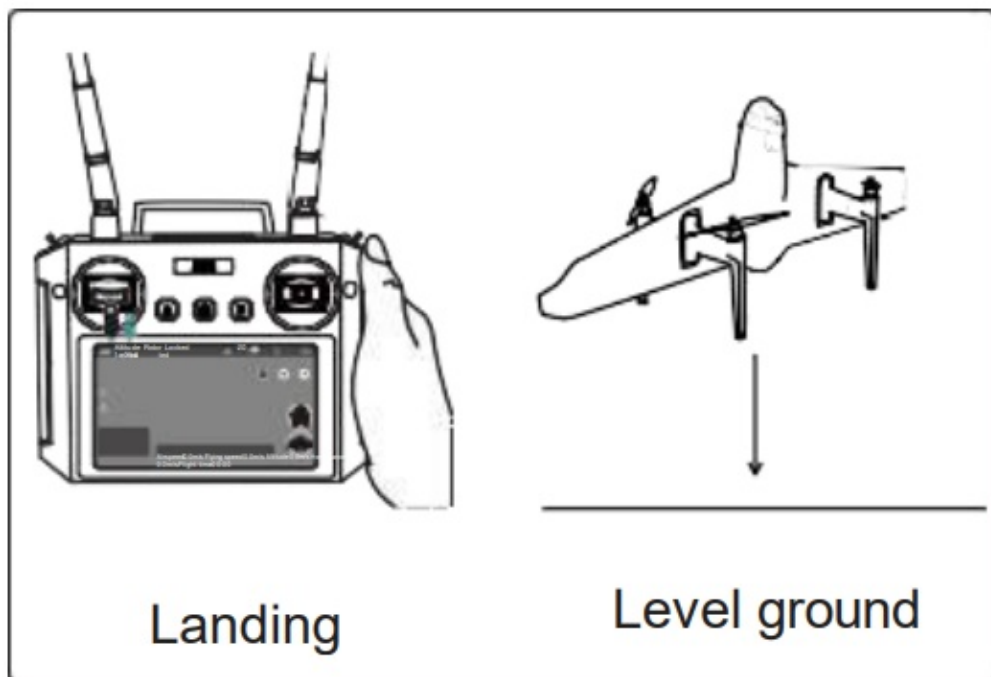
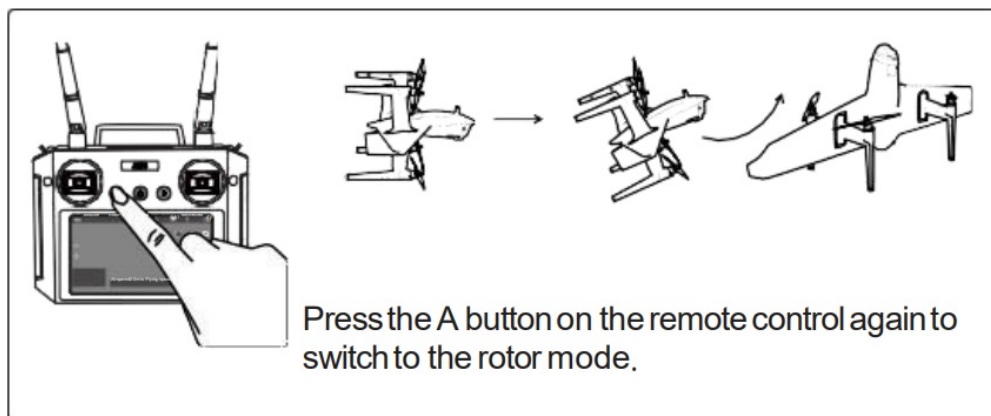


After entering the position mode, the throttle stick is the lowest and the heading stick is the rightmost to unlock the aircraft. After the motor rotates, please release the joystick immediately.

Rotor switch fixed-wing mode

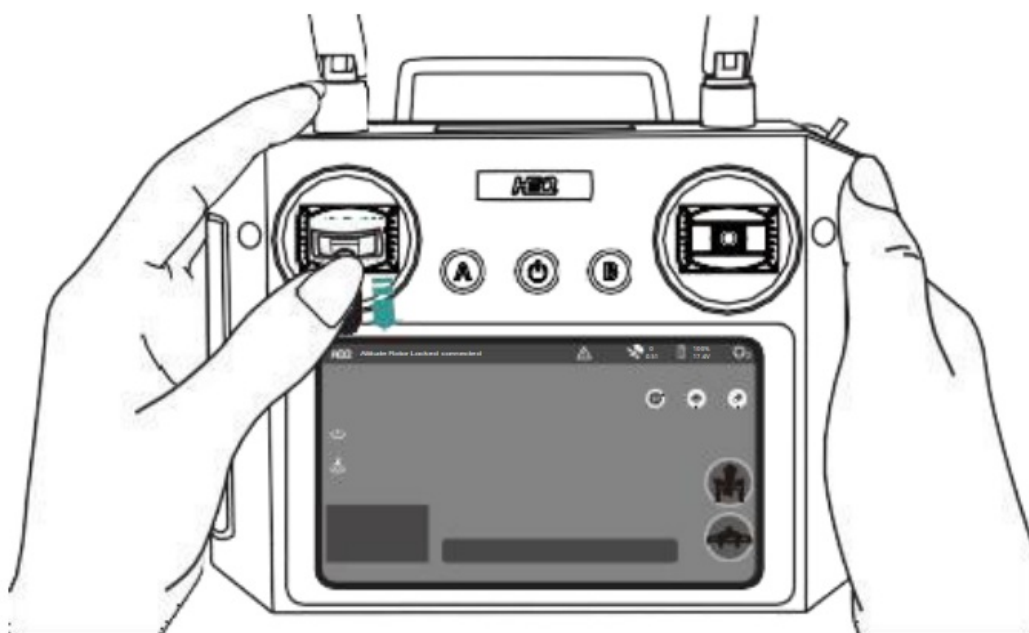


When operating the aircraft in rotor mode, you can press the remote control A button to switch to the fixed-wing mode when you reach 30 meters altitude.



How to lock (US hands)

After the aircraft lands on flat ground, hit the throttle stick to the lowest position and hold it for a few seconds before the motor stops.



Disconnect the power



Contents

[1 FCC Warning](#)

[2 Documents /
Resources](#)

[3 Related Posts](#)

FCC Warning

15.19 Labeling requirements.

This device complies with part 15 of the FCC Rules. Operation is subject to the following two conditions: (1) This device may not cause harmful interference, and (2) this device must accept any interference received, including interference that may cause undesired operation. 15.21 Information to the user.

Any changes or modifications not expressly approved by the party responsible for compliance could void the user's authority to operate the equipment.

This Transmitter must not be co-located or operating in conjunction with any other antenna or transmitter.

This equipment complies with RF radiation exposure limits set forth for an uncontrolled environment.

This equipment should be operated with a minimum distance of 20cm from the body.

IC Warning

This device complies with Industry Canada's license-exempt RSS. Operation is subject to the following two conditions: (1) This device may not cause interference; (2) This device must accept any interference, including interference that may cause undesired operation of the device.

This equipment should be operated with a minimum distance of 20cm from the body.

CE Warning

1. Risk of explosion if the battery is replaced by an incorrect type. Dispose of used batteries according to the instructions.
2. The operating temperature of the device can't exceed 40 and shouldn't be lower than -20.
3. The device complies with RF specifications when the device is used at 20cm from the body.

Hereby, Shenzhen HEQ Intelligent Technology Co. LTD.

declares that this product is in compliance with essential requirements and other relevant provisions of Directive 2014/53/EU.

This product is allowed to be used in all EU member states.

Documents / Resources

H-Wing PRO
855-A-73802
2016 FoxTech



[FOXTECH H-Wing PRO Vtol Dual Camera Mapping Combo](#) [pdf] User Guide
H-Wing PRO Vtol Dual Camera Mapping Combo