

**Contents** [[hide](#)]

- [1 Foshan T2 Inline LED Dimmer](#)
- [2 Product features:](#)
- [3 Technical parameters:](#)
- [4 Remote control button function](#)
- [5 Product Specifications](#)
- [6 Product Description](#)
- [7 Technical Parameters](#)
- [8 External Dimension](#)
- [9 Directions for use](#)
- [10 Typical Applications](#)
- [11 FCC Statement](#)
- [12 Radiation Exposure Statement](#)
- [13 Frequently Asked Questions](#)
- [14 Documents / Resources](#)
 - [14.1 References](#)

Foshan

Foshan T2 Inline LED Dimmer



USER MANUAL

Thank you very much for choosing our company's application controller. This product has a unique and distinctive 2-in-1 design, which includes intelligent Bluetooth APP control, RF21 key remote control, and 3-button independent control. Bluetooth 4.0-EDR (Enhanced Data Rate) and specific speech purity and clarity based on DSP technology. Wishing you infinite happiness in the combination of lighting and music.

Product features:

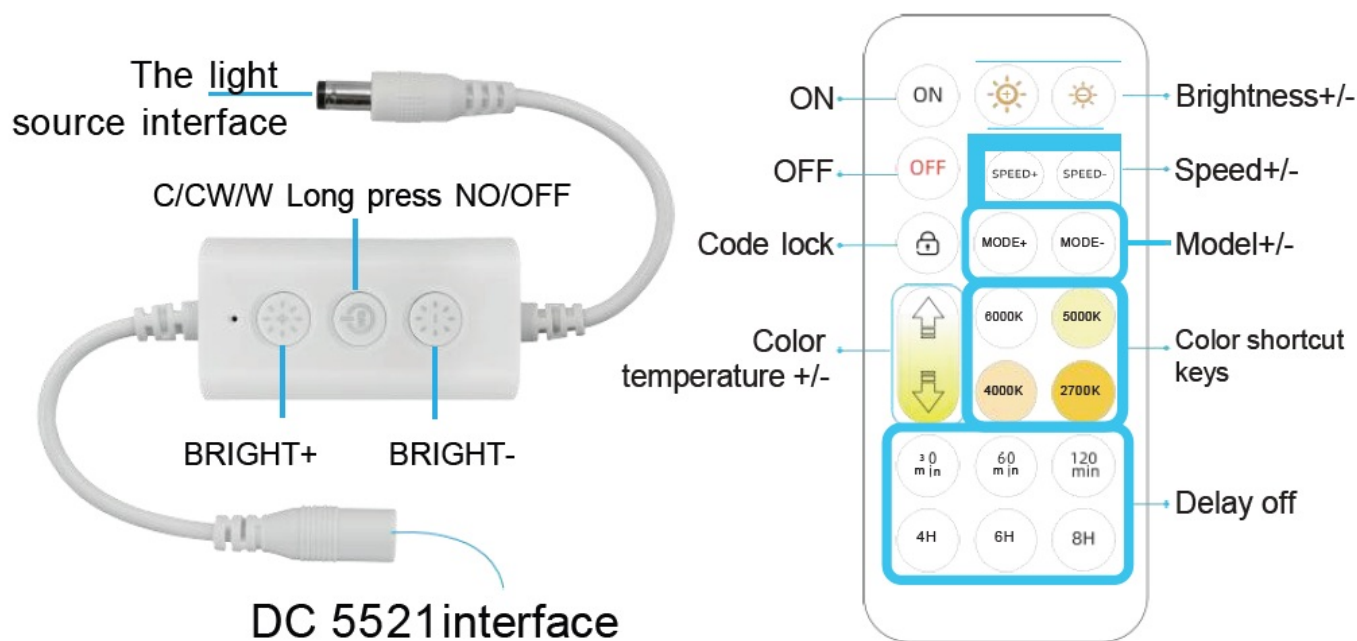
1. Use mobile app control, wireless remote control, and three-button control;
2. Timer management, which can set multiple sets of timers, including single group daily, weekday, weekend, etc.
3. Support group synchronization control, which can synchronize multiple smart lights.
4. Adjustable lighting brightness and dynamic mode.
5. Adjustable color temperature value.
6. System compatibility: Android 4.0 and above, iOS 8.0 and above.

Technical parameters:

- Working voltage: DC5-24V

- Product size: L60 * W31 * H15mm
- 'Working temperature:-20-60 oc
- RF frequency: 2.4GHz
- Weight:60g
- Remote control battery: 1
- Pcs* CR2025 button battery

Remote control button function



DC 5521 interface

- Code pairing: Press and hold the power button within 5 seconds of powering on the device to match the code
- Code clearing: Long press the shutdown button within 5 seconds of powering on the device to clear the code
- APP Download: Both ios and Android systems can download the "LotusLamp X"APP by scanning the QR code. Open a browser,and scan the "LotusLamp X" QR code.



LotusLamp X

- Welcome to our App ! Here are some guidelines to help you better use the App,including features:
- First of all, the use of all the functions of the App requires the authorization of the relevant mobile phone system authority, and the consent to open the App can use all the functions of the App normally.

1. My Device

1. Device list, showing the searched device, highlighted when connected.
2. Connection status, click to connect/disconnect the device.
3. Light switch button, in the connected state, click the light on / off.
4. Set the button, click to jump b the setting page
5. Switch over the device list display mode
6. Add the device / group /virtual device entry

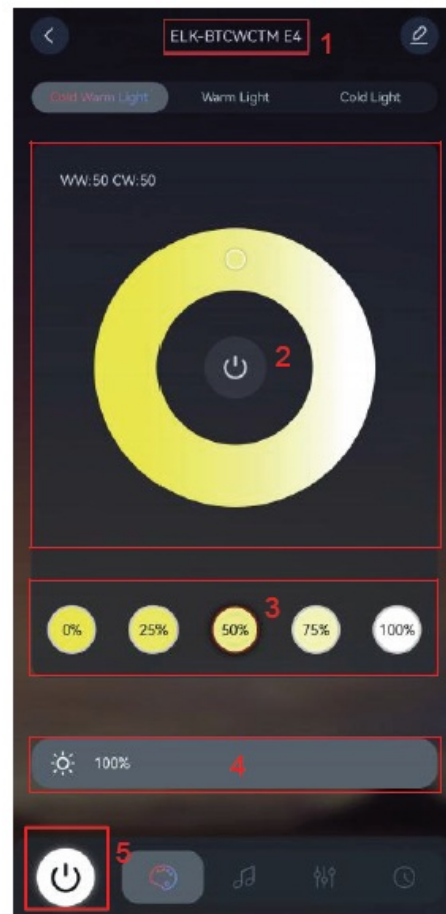


2. Device details

Adjust

You the color ofthe device by sliding the color disk or clicking on the color block

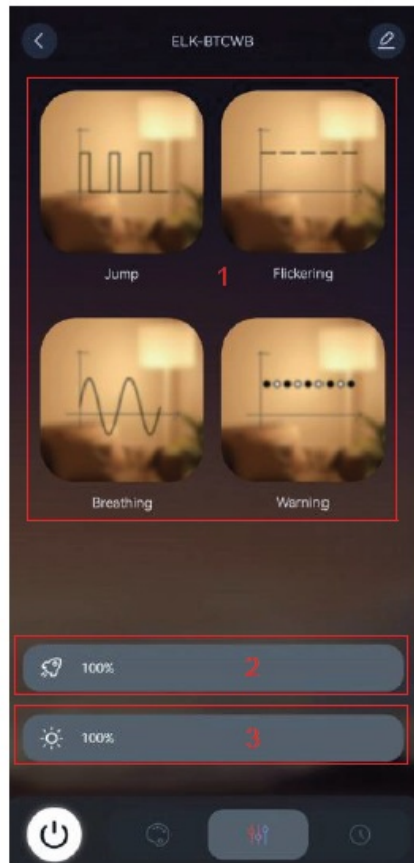
- Device connection state, including unconnected/empty (representing connected)
- Color disk option, click to switch between warm and cool light, warm light, cold light
- Color tray, used to change the device color
- Brightness adjustment, sliding can set the brightness of Switch, used for turning the lights on /off



Mode

Design a good combination of speed and brightness.

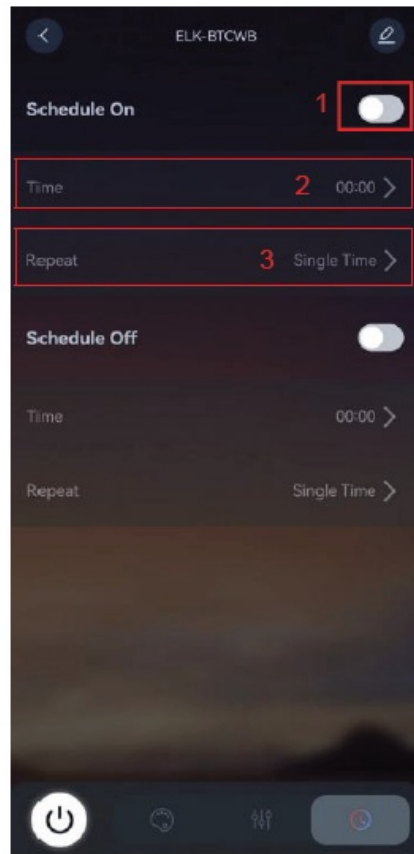
1. Mode list, slide to switch
2. Speed adjustment, sliding can set the transformation speed of the mode
3. Brightness adjustment, sliding to set the brightness of the light



Schedule

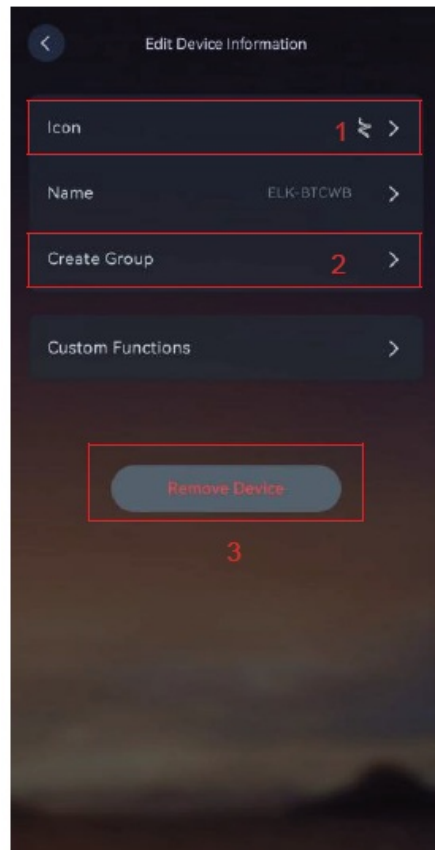
Support setting time on and time off. Note: The APP will not save the timing time. After connecting the device, it will automatically read from the device

1. switch
2. time selection
3. Repeat, can set Monday to Sunday any time, support multiple selection



Device editing

1. Modify the device icon and name
2. Create groups, a similar type of devices supports creating groups, you can control multiple devices simultaneously
3. Remove the device and remove my device from my device list.



Product Specifications

- Model number T2
- Products name Inline LED dimmer



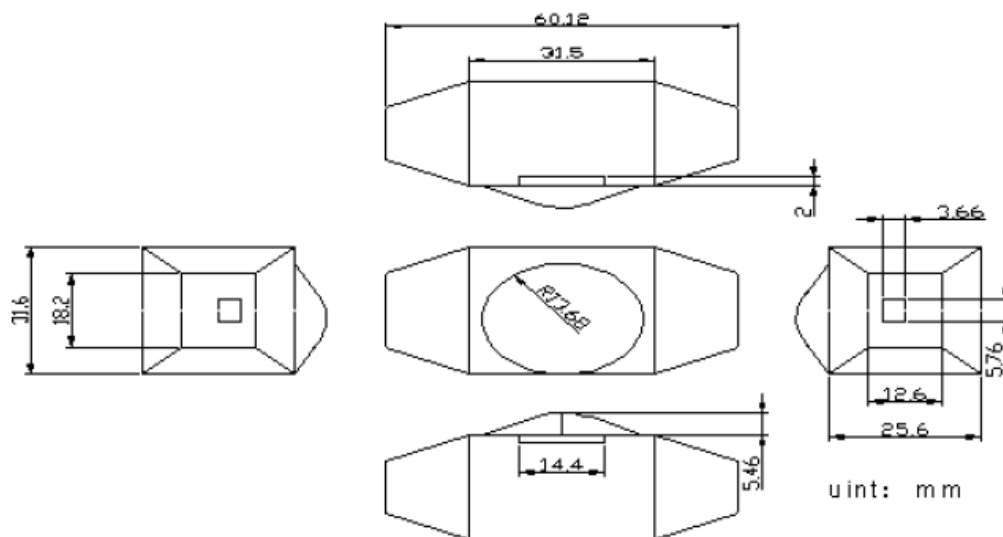
Product Description

Single color dimmer can achieve step-less dimming. It adopts the knob control manner. According to actual needs, users can transfer the light to the appropriate brightness.

Technical Parameters

- Working temperature -20-60
- Supply voltage DC5V, 12V~24V optional (specify the required voltage on orders)
- Output 1 channel
- External dimension L61×W33×H32mm
- Packing size L90×W60×H40mm
- Net weight 30g
- Gross weight 50g
- Static power consumption <1W
- Output current <6A
- Output power 5V<30W, 12V<72W, 24V<144W

External Dimension



Interface Specifications

Power input interface:

DC female connector :5.5×2.1mm



Load output interface

DC male connector :5.5×2.1mm



Directions for use

1. Connect the load wire at first, following by the power wire; Please ensure short circuit can not occur between connecting wire before you turn on the power
2. Adopt rotary button, its function as follows:

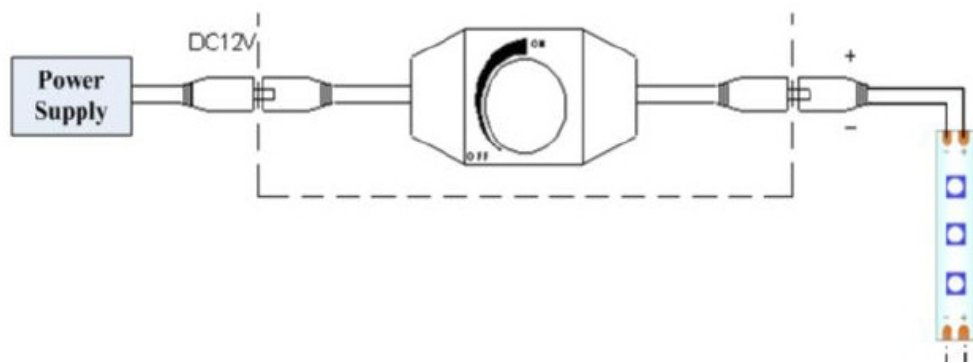


Rotate button to the right, brightness will be brighter, when you rotate it to the far right,

the brightness is greatest.

Rotate button to the left, brightness will be darker, when you rotate it to the far left, the light will be turned off.

Typical Applications



Cautions

1. This products Input voltage is DC12V,other input voltage are not allowed.
2. Lead wire should be connected correctly,according to the wire color and the connecting diagram offers.
3. Overload are prohibited.

Cautions

1. This product should be debugged and installed by professional qualified personnel.
2. This product can not waterproofed, need to avoid the sun and rain, if installed outdoors, please use a waterproof water tank.
3. Good heat dissipation conditions will prolong the service life of LED controller, please install the product in a well-ventilated environment.
4. Please do not install and use such products in lightning, thunder and strong magnetic field or high-pressure situations.
5. Please check whether the output voltage of the LED power supply meets the voltage range requirements.
6. The diameter of the wire must be enough to load the connect- ed LED lamps, and ensure that the wiring is firm, so as to avoid overheating or poor contact trigger accidents.
7. Before power debugging, ensure that all wiring is correct, in order to avoid wiring error

causing lamp damage.

8. This product belongs to electronic products, please avoid strong wrestling, collision or falling products.
9. Please place it out of reach of children in case of danger.

FCC Statement

This device complies with part 15 of the FCC rules. Operation is subject to the following two conditions:

1. This device may not cause harmful interference, and
2. This device must accept any interference received, including interference that may cause undesired operation.

Caution: Changes or modifications not expressly approved by the party responsible for Compliance could void the user's authority to operate the equipment.

NOTE: This equipment has been tested and found to comply with the limits for a Class B digital device, pursuant to part 15 of the FCC Rules. These limits are designed to provide reasonable protection against harmful interference in a residential installation. This equipment generates and uses radio frequency energy and, if not installed and used in accordance with the instructions, may cause harmful interference to radio communications. However, there is no guarantee that interference will not occur in a particular installation. If this equipment does cause harmful interference to radio or television reception, which can be determined by turning the equipment off and on, the user is encouraged to try to correct the interference by one or more of the following measures:

- Reorient or relocate the receiving antenna.
- Increase the separation between the equipment and receiver.
- Connect the equipment into an outlet on a circuit different from that to which the receiver is connected.
- Consult the dealer or an experienced radio/TV technician for help important announcement .- Reorient or relocate the receiving antenna.
- Increase the separation between the equipment and receiver.
- Connect the equipment into an outlet on a circuit different from that to which the

receiver is connected.

- Consult the dealer or an experienced radio/IV technician for help important announcement.

Radiation Exposure Statement

To comply with FCC RF exposure compliance requirements, this grant is applicable to only mobile configurations. The antennas used for this transmitter must be installed to provide a separation distance of at least 20 cm from all persons and must not be co-located or operating in conjunction with any other antenna or transmitter.

Frequently Asked Questions


How do I adjust the color and brightness of the lights?

You can adjust the color and brightness through the mobile app or by using the remote control.

Can I set multiple timers for different days?

Yes, you can set multiple timers for daily, weekday, weekend, etc., through the timer management feature.

Documents / Resources

	<p>Foshan T2 Inline LED Dimmer [pdf] Instruction Manual</p> <p>YY2835120, 2BF7U-YY2835120, T2 Inline LED Dimmer, T2, Inline LED D immer, LED Dimmer, Dimmer</p>
---	---

References

- [User Manual](#)

Leave a comment

Your email address will not be published. Required fields are marked *

Comment *

Name

Email

Website

☐ Save my name, email, and website in this browser for the next time I comment.

Post Comment

Search:

e.g. whirlpool wrf535swhz

Search

[Manuals+](#) | [Upload](#) | [Deep Search](#) | [Privacy Policy](#) | [@manuals.plus](#) | [YouTube](#)

This website is an independent publication and is neither affiliated with nor endorsed by any of the trademark owners. The "Bluetooth®" word mark and logos are registered trademarks owned by Bluetooth SIG, Inc. The "Wi-Fi®" word mark and logos are registered trademarks owned by the Wi-Fi Alliance. Any use of these marks on this website does not imply any affiliation with or endorsement.