




Fosco Connect T-TLV-U-FF-CY3.5 Microscopy Cube with Pre Installed Cyanine Filter S Instructions

[Home](#) » [Fosco Connect](#) » Fosco Connect T-TLV-U-FF-CY3.5 Microscopy Cube with Pre Installed Cyanine Filter S Instructions 

Contents

- [1 Fosco Connect T-TLV-U-FF-CY3.5 Microscopy Cube with Pre Installed Cyanine Filter S](#)
- [2 Product Information](#)
- [3 Product Usage Instructions](#)
- [4 DIMENSION](#)
- [5 OVERVIEW](#)
- [6 Product Drawing](#)
- [7 Documents / Resources](#)
 - [7.1 References](#)
- [8 Related Posts](#)



Fosco Connect T-TLV-U-FF-CY3.5 Microscopy Cube with Pre Installed Cyanine Filter S



Product Information

Specifications

- Dimensions: 0.47in (11.9mm), 0.11in (2.8mm), 1.54in (39.1mm), 1.76in (44.7mm), 0.79in (20.1mm), 0.65in (16.4mm), 1.61in (40.9mm)
- Internal Threading: SM1 (1.035-40)
- Engraved Label Locations: 3 places
- Material: Anodized Aluminum
- Approx Weight: 0.07 kg

Description

The Filter Cubes for Microscopes are designed for use with Olympus U-FF models. They are made of anodized aluminum and come with various components, including a cube body, dichroic side cube body, screws, retaining ring, and dichroic filter spring plate.

Product Usage Instructions

Step 1: Preparation

Ensure that you have all the necessary components mentioned in the description.

Step 2: Installation

1. Identify the cube body and the dichroic side cube body.

2. Attach the dichroic side cube body to the cube body using the M2 X 4 mm screws (using #1 drive).
3. Secure the assembly by tightening the SM1RR retaining ring.
4. Attach the dichroic filter spring plate to the assembly.

Step 3: Mounting

Follow the microscope manufacturer's instructions to mount the assembled filter cube onto the microscope.

Step 4: Usage

Once the filter cube is properly mounted, you can use it for microscopy applications with the Olympus U-FF model.

FAQ

Q: What are the dimensions of the Filter Cubes for Microscopes?
The dimensions of the Filter Cubes for Microscopes are as follows:

- 0.47in (11.9mm)
- 0.11in (2.8mm)
- 1.54in (39.1mm)
- 1.76in (44.7mm)
- 0.79in (20.1mm)
- 0.65in (16.4mm)
- 1.61in (40.9mm)

Q: What is the weight of the Filter Cubes for Microscopes?
The approximate weight of the Filter Cubes for Microscopes is 0.07 kg.

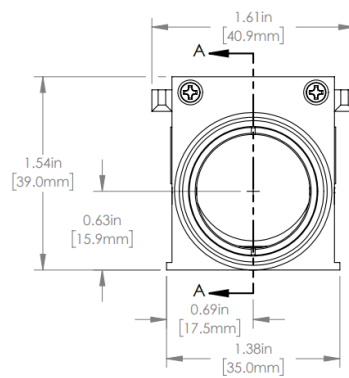
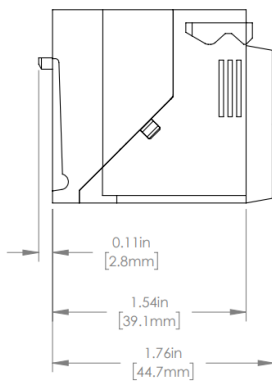
Q: What is the material used for the Filter Cubes for Microscopes?
The Filter Cubes for Microscopes are made of anodized aluminum.

DIMENSION

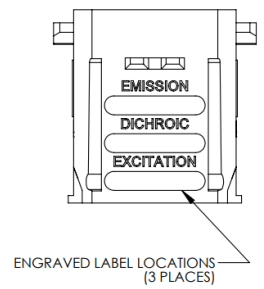
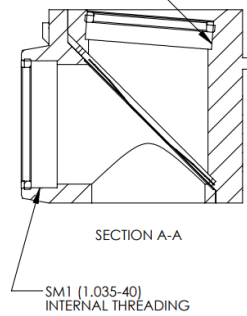
0.47in
[11.9mm]

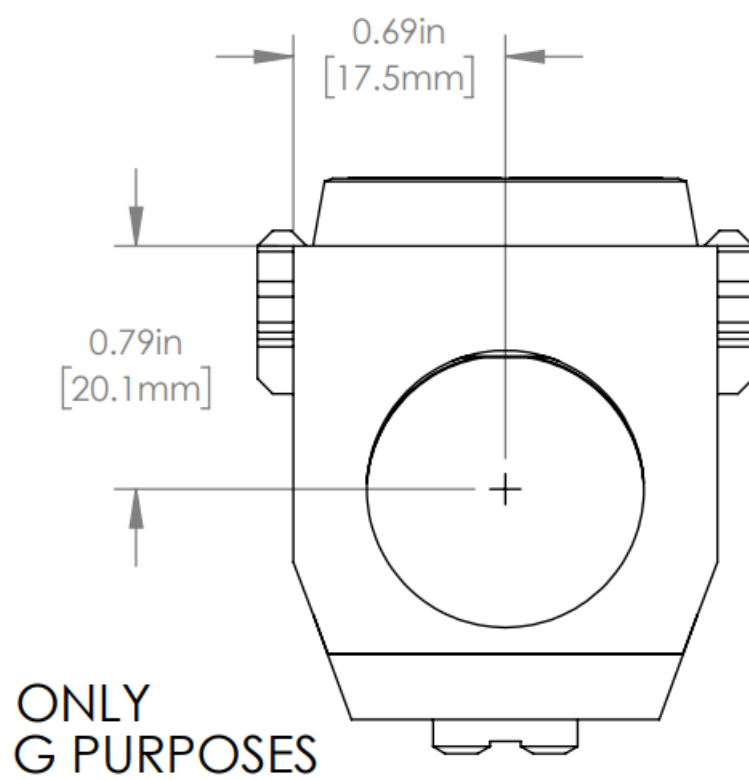
0.79in
[20.1mm]

0.65in
[16.4mm]

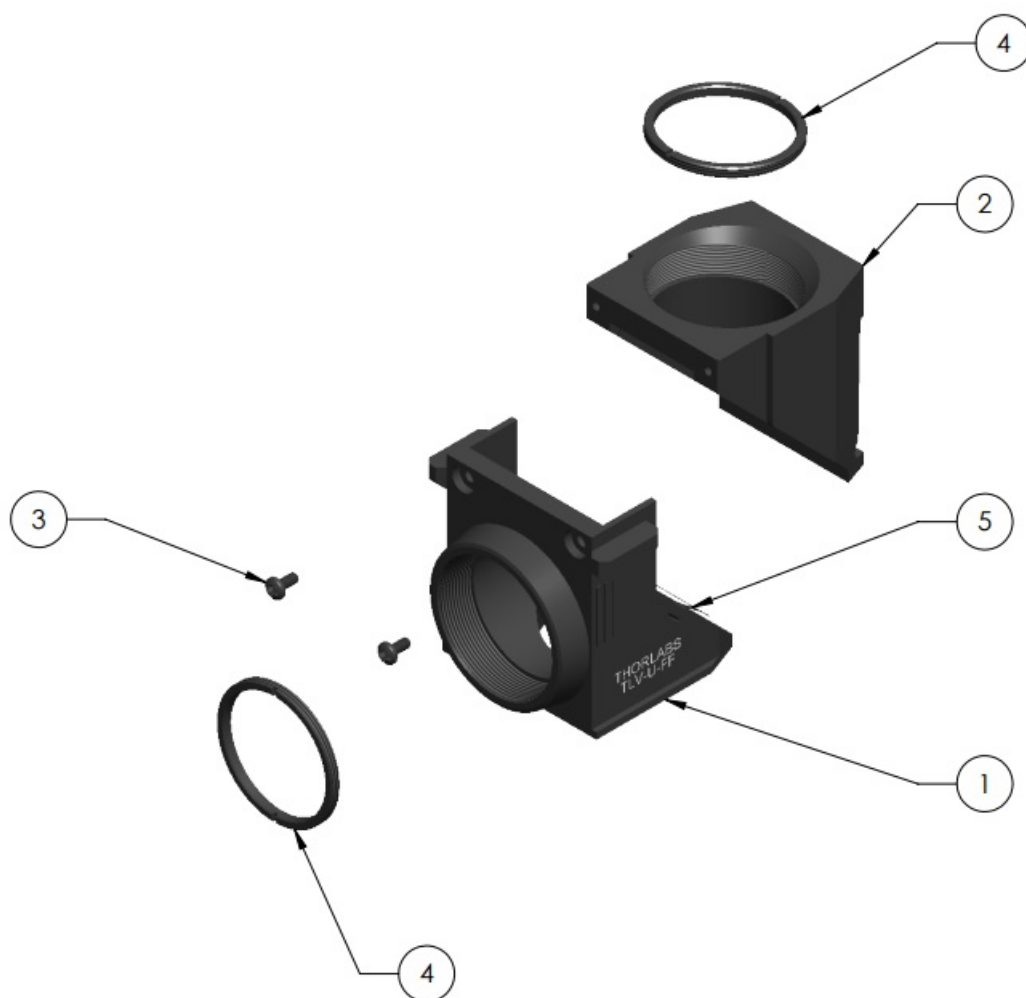


SM1 (1.035-40)
INTERNAL THREADING



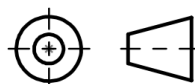


OVERVIEW



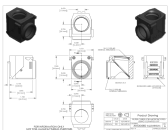
PART #	DESCRIPTION
1	CUBE BODY
2	CUBE BODY (DICHROIC SIDE)
3	M2 X 4 mm SCREW (X2), #1 DRIVE
4	SM1RR RETAINING RING
5	DICHROIC FILTER SPRING PLATE

Product Drawing

DRAWING PRO JECTION				Product Drawing	
					
	NAME	DATE	FILTER CUBES FOR MICRO SCOPES USING OLYMPUS U-FF		
DRA WN	CFS	16/MA R/16			
APP ROV AL	DD	24/MA R/16	MATERIAL ANODIZED ALUMINUM		R E V A
VALUES IN PARENTHESIS ARE CALCULATED AND MA Y CONTAIN ROUNDOFF ER RORS			ITEM # T-TLV-U-FF		APPROX WEIGHT 0.07 kg

FOR INFORMATION ONLY NOT FOR MANUFACTURING PURPOSES

Documents / Resources

	Fosco Connect T-TLV-U-FF-CY3.5 Microscopy Cube with Pre Installed Cyanine Filter S [pdf] Instructions T-TLV-U-FF-CY3.5 Microscopy Cube with Pre Installed Cyanine Filter S, T-TLV-U-FF-CY3.5, Microscopy Cube with Pre Installed Cyanine Filter S, Cube with Pre Installed Cyanine Filter S, Installed Cyanine Filter S
---	--

References

- [User Manual](#)

[Manuals+](#), [Privacy Policy](#)