

FOSCAM G4C IP Camera User Guide

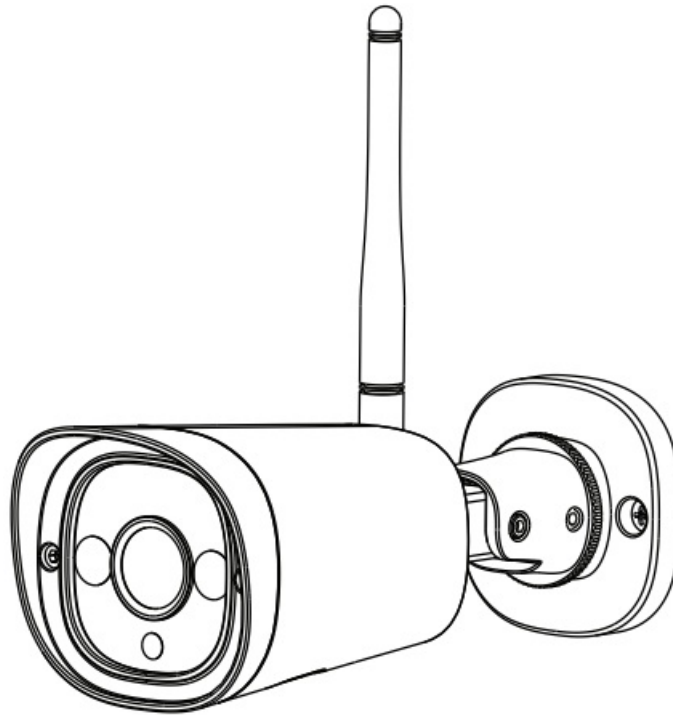
[Home](#) » [FOSCAM](#) » FOSCAM G4C IP Camera User Guide 

Contents

- [1 FOSCAM G4C IP Camera](#)
- [2 Getting Started](#)
- [3 Physical Description](#)
- [4 Setting Up Your Camera](#)
- [5 PC Access Your Camera](#)
- [6 Hardware Installation](#)
- [7 6 Important Notice](#)
- [8 Product Performance](#)
- [9 Troubleshooting](#)
- [10 Documents / Resources](#)
 - [10.1 References](#)



FOSCAM G4C IP Camera



Product Information

The Foscam Security Camera is an IP camera designed for indoor use. It comes with a power adapter, Ethernet cable, Wi-Fi antenna and a quick setup guide. The camera has infrared LED lights, an audio in/out port, a reset button and a micro SD card slot. It supports dual-band 2.4GHz and 5GHz Wi-Fi networks and can be controlled using the Foscam app on iOS or Android devices.

For security purposes, it is recommended to change the camera's password regularly using a combination of numbers, letters and special characters. It is also recommended to update the camera's software and firmware regularly for optimal performance.

Product Usage Instructions

Wired Connection via Foscam App

1. Tighten the antenna clockwise and ensure it is in a vertical position.
2. Connect the camera to your router with an Ethernet cable.
3. Plug the power adapter into the camera and wait for about 1 minute.
4. Ensure your smartphone is connected to the same Wi-Fi network as the camera.
5. Open the Foscam app and register or sign in to your Foscam account.
6. Scan the QR code located on your device using the app.
7. Choose the setup method (Wi-Fi or wired connection).
8. Follow the on-screen instructions to complete the setup process.

Note: For optimal performance, ensure your smartphone meets the following specifications:

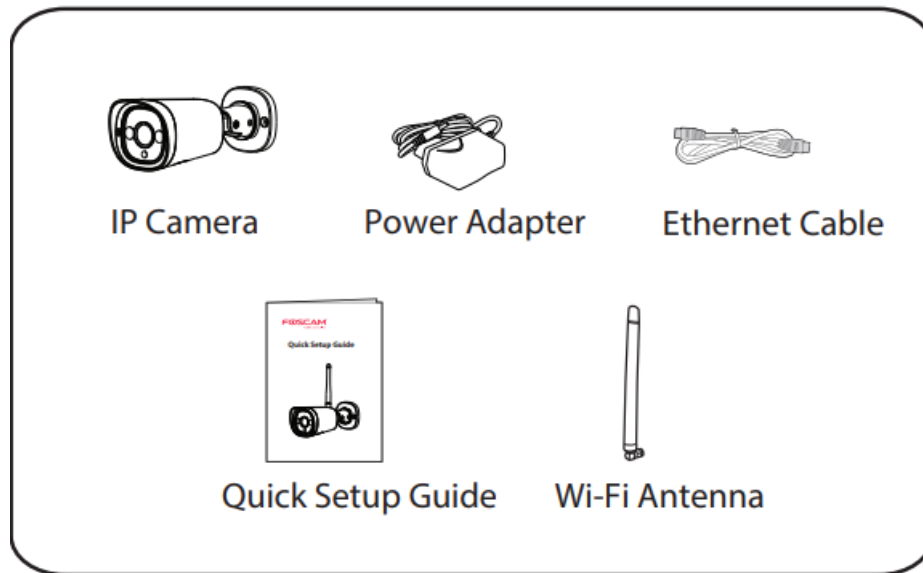
- iOS: version 8.1 or higher
- Android: 4.1 or higher, using a device with a Graphics Processing

For child safety, keep the cords out of the reach of children. It is also recommended to update the Foscam app to the latest version for the best experience.

To view this guide in other languages (e.g. Nederlands, Deutsch, Français, Español), and for detailed manuals, tools, etc., please visit foscam.com/downloads.

Getting Started

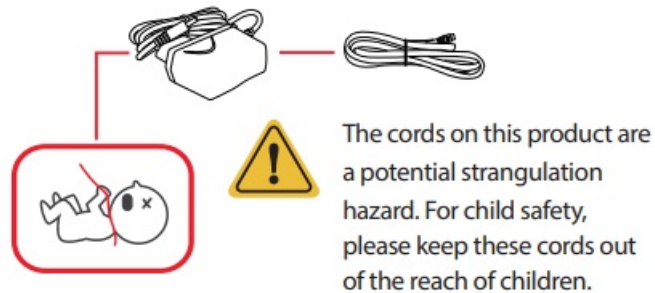
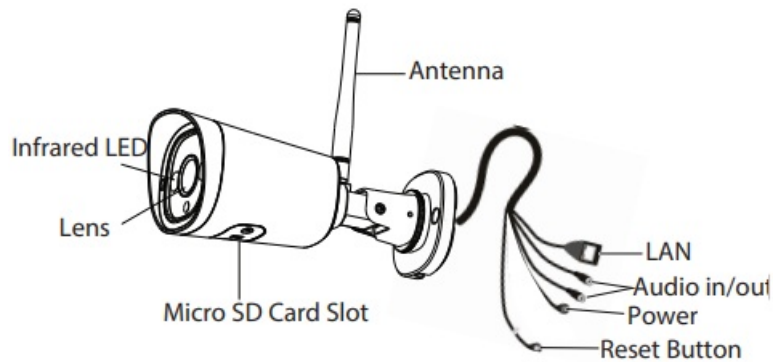
Package Contents



Security Tips

- Please change the camera's password regularly, using a combination of numbers, letters and special characters.
- We recommend that you regularly update your camera with the latest available software and firmware to ensure the best experience with your camera.

Physical Description



Setting Up Your Camera

Wired Connection via the Foscam App (Recommended)

Before You Get Started

Scan the QR code below to download and install the Foscam APP.

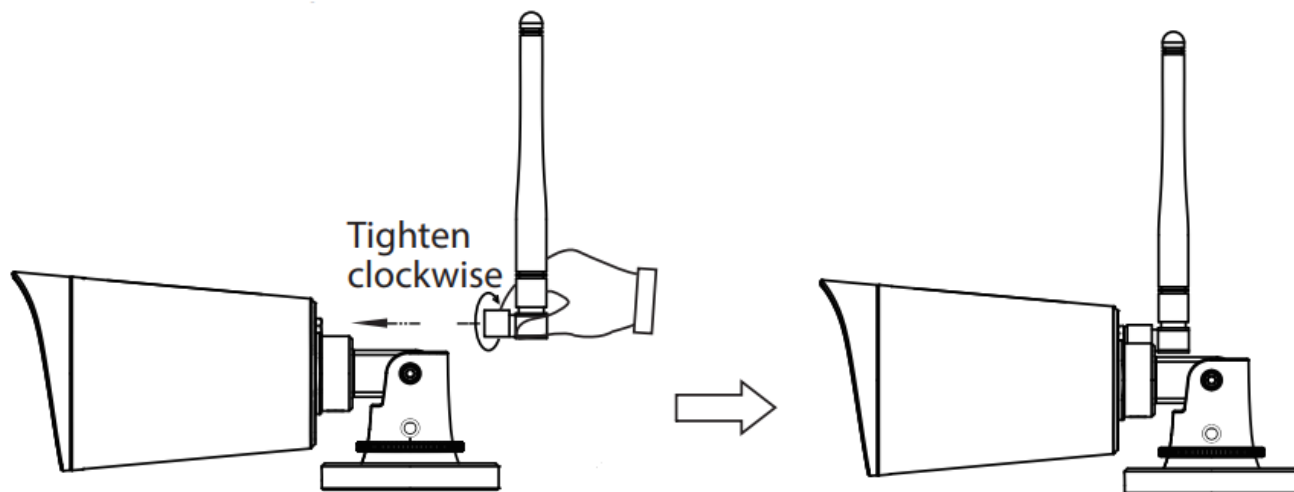


To ensure a smoother video experience on your smart phone, it is recommended that your smart phone meet the following specifications:

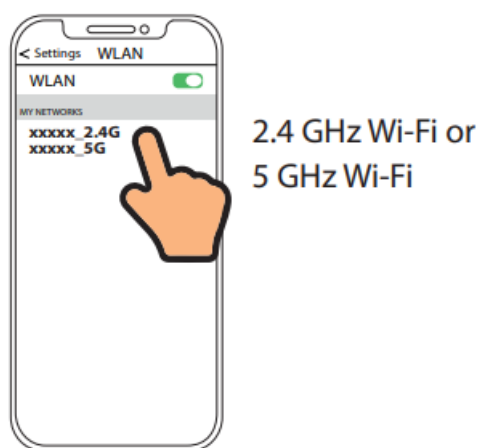
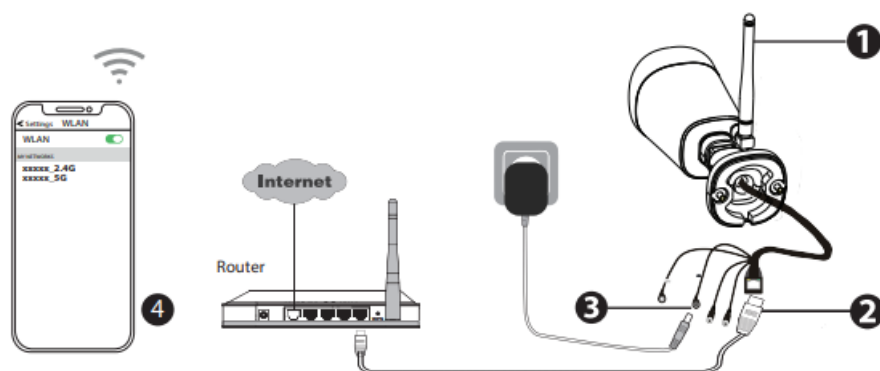
- iOS: version 8.1 or higher.
 - Android: 4.1 or higher, using a device with a Graphics Processing
- Note: For the best experience, please update the APP to the latest version!

Wired Connection

1. Please tighten the antenna clockwise and make sure it is in a vertical position.

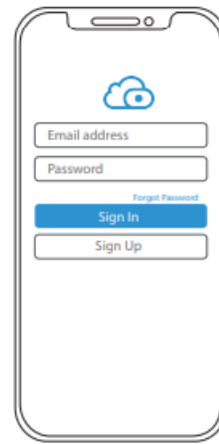


2. Connect the camera to your router with an Ethernet cable.
3. Plug the power adapter into the camera, and then wait for about 1 minute.
4. Make sure your smart phone is connected to the same WiFi network as the camera.

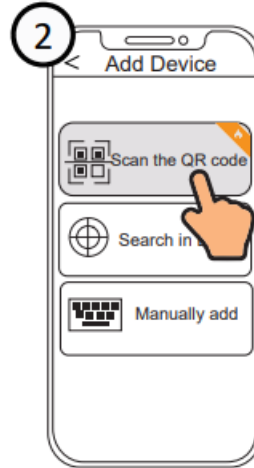
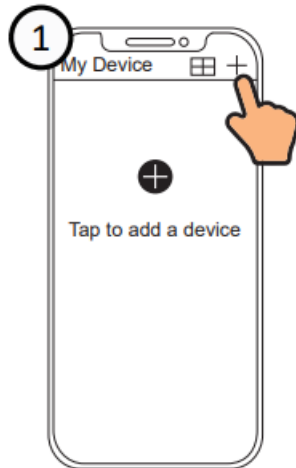


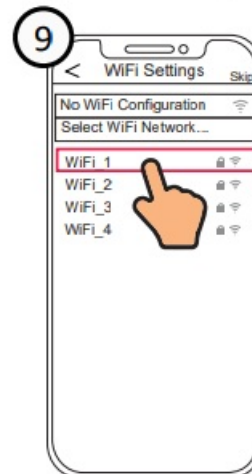
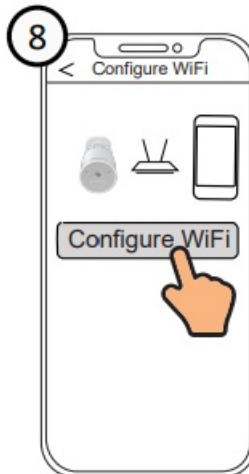
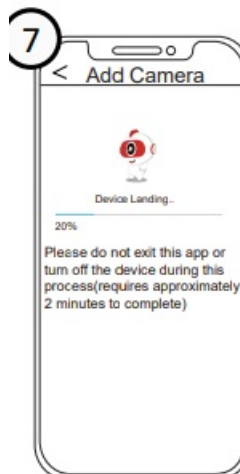
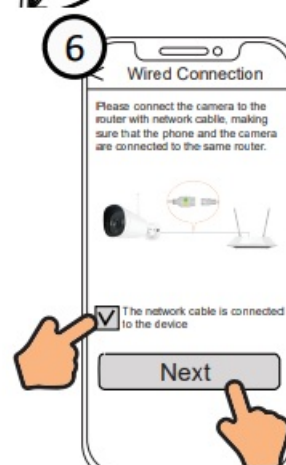
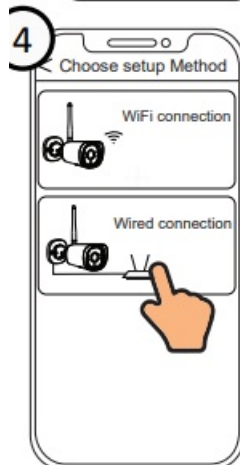
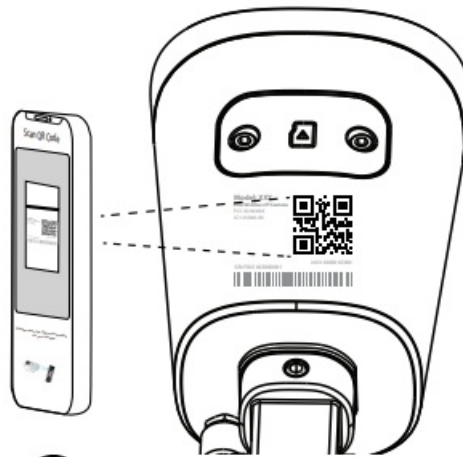
Tips: The camera supports dual-band 2.4GHz and 5GHz WiFi networks, so you can choose the channel with the stronger signal to use. For example, choose your SSID: XXXXX_2.4G or XXXXX_5G.

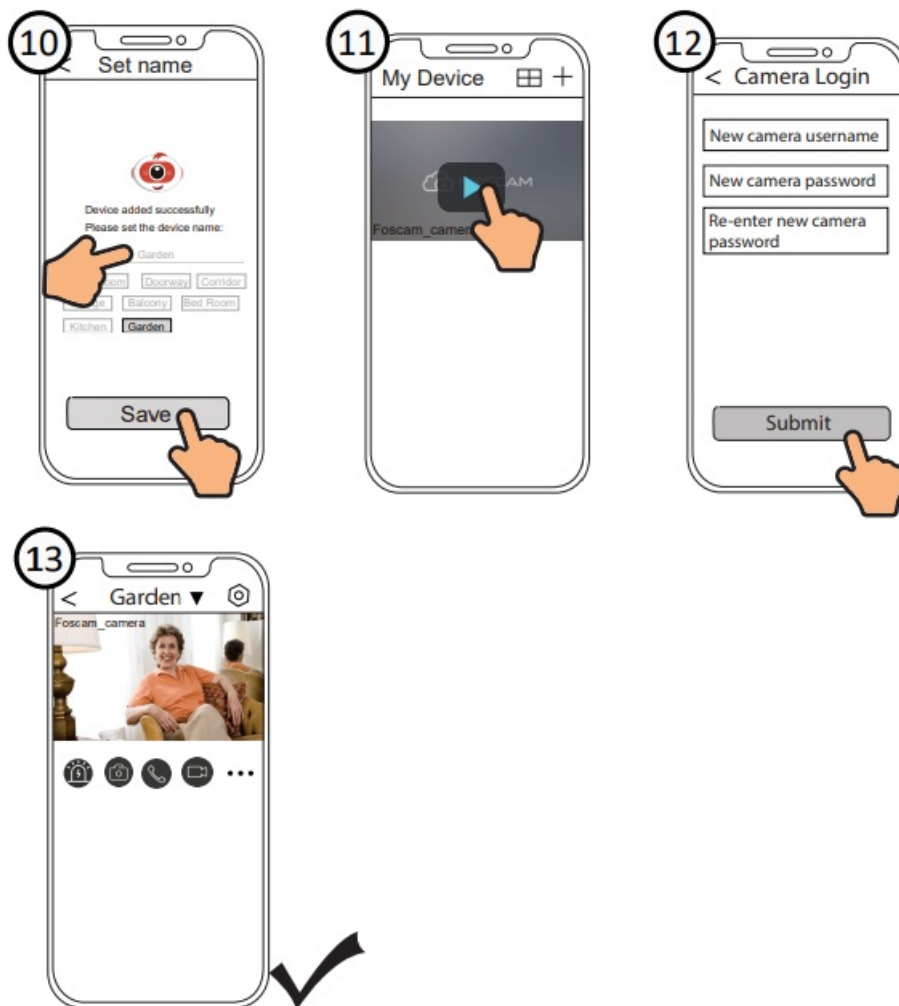
5. Open the foscaml APP and please register a Foscam account, or sign in if you have one already.



6. Follow the steps below:





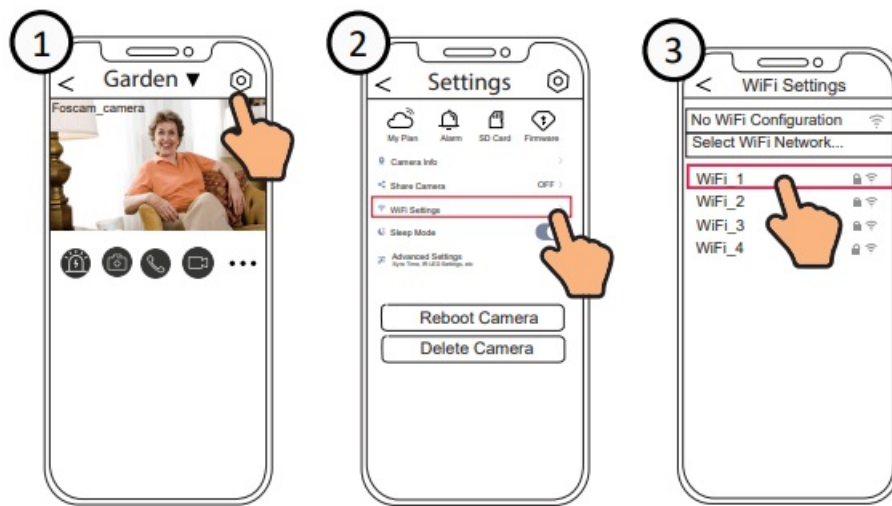


Note: If the adding process fails, please reset your camera and try adding again according to the above method.



Configure WiFi

If you selected "Skip" in 9, click play to enter the camera credentials interface > Tap the "⚙️" button > tap "WiFi Settings" > select your WiFi network and enter your WiFi's password. After setting up successfully, you can view live video without the Ethernet cable.



PC Access Your Camera



Foscam VMS

Foscam VMS is a new tool for PCs. It does not require plug-ins and is compatible with Windows & Mac, supporting all Foscam HD cameras and up to 36 cameras at the same time. If you would like to manage multiple cameras, we suggest you install Foscam VMS. You can download the “Foscam VMS” Windows version from foscam.com/vms, and can download the “Foscam VMS” Mac version from the APP store:

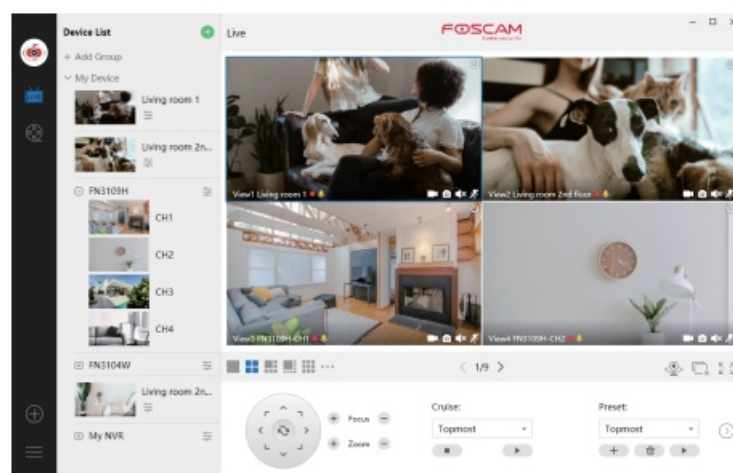
<https://apps.apple.com/cn/app/foscamvms/id1521202507?mt=12>

Note: For the best experience, please update Foscam VMS to the latest version!

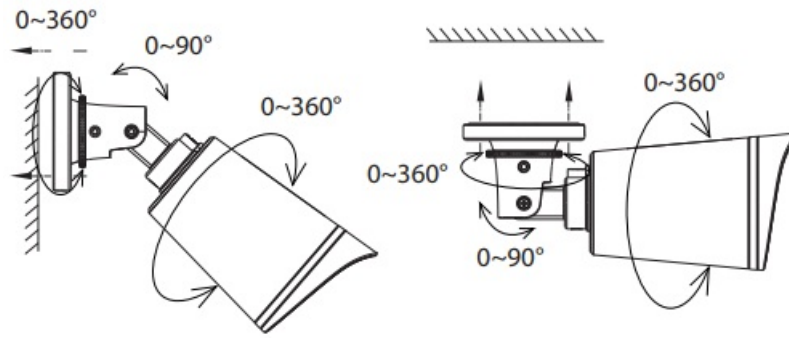
Add the IP Camera

1. Run Foscam VMS, then create a local administrator account and login.
2. Tap the “+” icon on the Foscam VMS and follow the setup wizard to add your camera.

Please visit foscam.com/downloads to view the user manual and for additional detailed steps.



Hardware Installation



Point the camera at the desired location and use the screws provided to mount it.

Please Note:

Ensure that rain or water will not reach the connector ports at the end of the pig tail wiring. These connectors are not weather-resistant.

6 Important Notice

Camera Username & Password

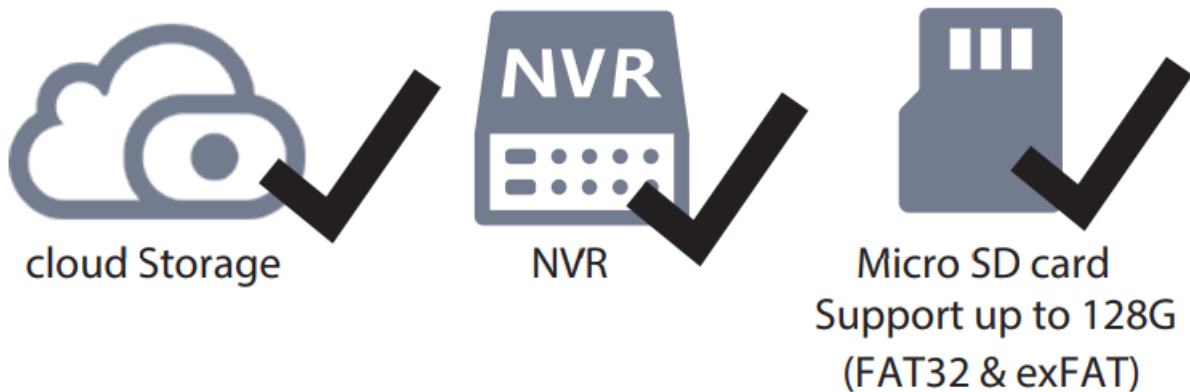
The camera username & password are used to access and manage your camera. Having a strong password can significantly improve the security of your camera. If you have forgotten either of them, please press the "Reset" button.



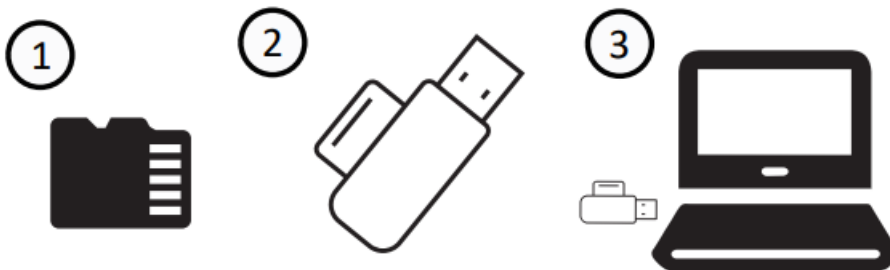
Press the "Reset" button and hold it for more than 3~5 seconds

Storage Media

Your camera supports cloud, NVR (Network Video Recorder), and Micro SD card (supports FAT32 and exFAT format) storage formats.



How to format Micro SD card, please follow the steps below

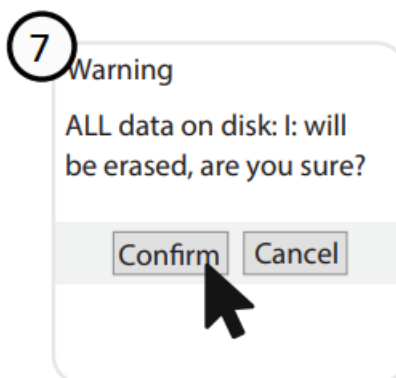
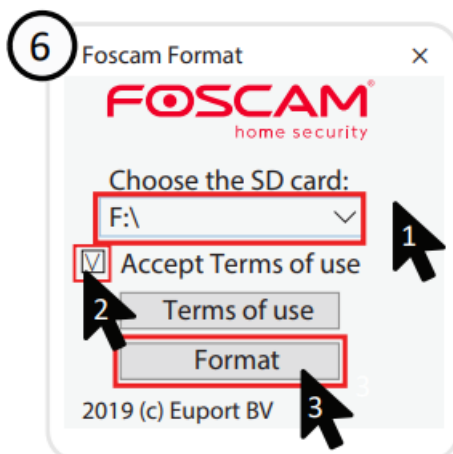
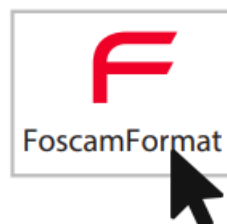


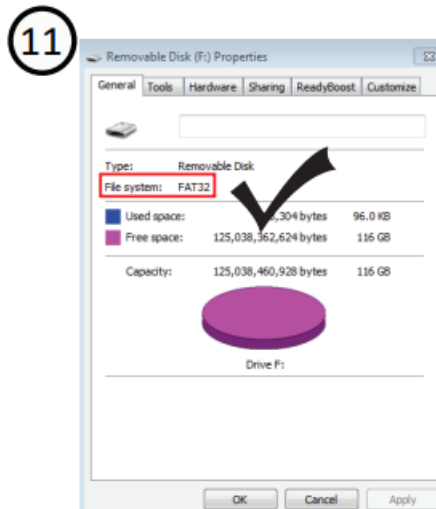
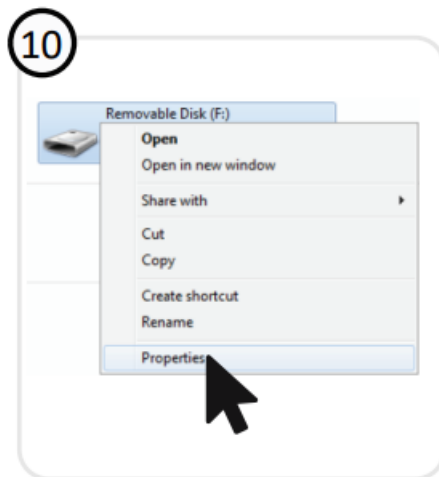
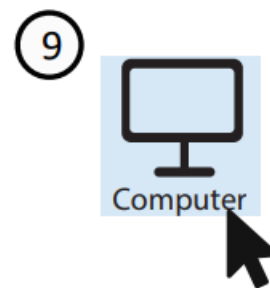
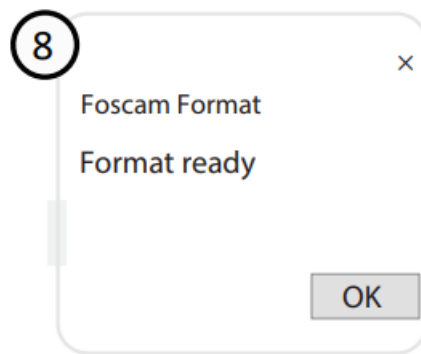
- 4 Scan the QR code below to download the "FoscamFormat" Tool



foscam.com/downloads/app_software.html

- 5 Open the "FoscamFormat" Tool





Safety Tips



Prohibit use at
high temperature



Prohibit use at
low temperature



Keep away
from fire



Keep away
from children



Not a
children's toy



Use the correct
power supply



Keep dry



Caution Electricity



Use the supplied
screw pack

Product Performance

WLAN frequency range	2412MHz – 2472MHz and 5725MHz – 5850MHz
Maximum transmission power	< 19dBm
Wireless Standard	IEEE802.11b/g/n (2.4GHz) IEEE802.11a/n/ac (5GHz)
Power Supply	DC 12V 1.0A 12W

Troubleshooting

IP cameras is not powering on

If you find your camera is not powering on, please try the following:

1. Please check whether the outlet is working properly or not. Try to plug the camera into a different outlet and see whether it will work.
2. Please check whether the DC adapter is working or not. If you have another 12V/1A power adapter which is working, please try with another power adapter and see whether it will work.
3. If it still won't work, please contact Foscam support.

How to re-configure the WiFi connection for Foscam cameras after router changed?

1. Please connect the camera to your router with an ethernet cable. If you can see the camera live video on the Foscam app, please go to camera settings-->WiFi settings to choose the new WiFi name and input WiFi password to set up. After the WiFi settings is completed, please disconnect the ethernet cable from the camera and wait for some seconds to connect to the camera.
2. There is a need to reset the camera first. Please refer to <https://www.foscam.com/faqs/view.html?id=13> to see the reset steps.

Then please open the Foscam app to scan the QR-code of your camera to set up the wireless connection for the camera. Please make sure your cellphone is connected to that new WiFi.

support@foscam.com

CE Certificate statement Website:

<https://www.foscam.com/company/ce-certificate.html>

Exporter and Importer Information Opened to Public:

<https://www.foscam.com/company/open-information.html>



FAQS



Foscam APP



Facebook

Manufacturer: Shenzhen Foscam Intelligent Technology Co., Ltd

Addr: Room 901, Unit B, Building 7, Xingke 1st Street Vanke Cloud City Phase 1, Nanshan Dist., Shenzhen, 518055, China

www.foscam.com

Due to product upgrades and other reasons, this guide may be slow to update, resulting in slight inconsistencies with the official website information. Please take the official website (www.foscam.com) information as the current standard.

Documents / Resources



[FOSCAM G4C IP Camera](#) [pdf] User Guide
G4C IP Camera, G4C, IP Camera, Camera

References

- [Foscam Support - FAQs](#)
- [Foscam Official Website - Security Cameras, NVRs, Baby Monitors, IP Cameras, NVR Kits, Security Kit, Pet Monitors, Cloud Storage Service](#)
- [Foscam Support - FAQs](#)
- [Foscam Official Website - Security Cameras, NVRs, Baby Monitors, IP Cameras, NVR Kits, Security Kit, Pet Monitors, Cloud Storage Service](#)
- [Foscam Declaration of Conformity System](#)
- [Foscam Open-Information System](#)
- [How to reset Foscam cameras?-Foscam Support - FAQs](#)