



# FORTRESS POWER BAEU6PXQNZY Built In Smart Load Controls User Guide

[Home](#) » [FORTRESS Power](#) » FORTRESS POWER BAEU6PXQNZY Built In Smart Load Controls User Guide 

## Contents

- [1 FORTRESS POWER BAEU6PXQNZY Built In Smart Load Controls](#)
- [2 Specifications](#)
- [3 Product Usage Instructions](#)
- [4 Maintenance](#)
- [5 FAQ](#)
- [6 CONTACT](#)
- [7 Documents / Resources](#)
  - [7.1 References](#)
- [8 Related Posts](#)



**FORTRESS POWER BAEU6PXQNZY Built In Smart Load Controls**



## Specifications

- **Brand:** Fortress Power
- **Product Name:** Avalon Whole-Home Energy Storage Solution
- **Features:** Built-in Smart Load Controls, 25-Year Warranty, Main Panel Upgrade, Load Control Panel, EV Panel, Smart Energy Panel, HV Inverter, Level 2 EV Charger, Stackable Battery, AC Combiner Box, Electric Meter
- **Warranty:** 15 – 25 years
- **Battery Chemistry:** LFP
- **Roundtrip Efficiency:** 95%
- **Back-Up Capacity:** 7.6/11.4 kW
- **Battery Capacity:** 14.7 – 29.6 kWh

## Product Usage Instructions

### Installation Process

1. Ensure you are a certified Fortress Power Avalon Installer.
2. Identify the location for installation with proper ventilation and accessibility to the main panels.
3. Connect the main panel upgrade, load control panel, EV panel, smart energy panel, HV inverter, level 2 EV charger, stackable battery, AC combiner box, and electric meter as per the provided installation manual.
4. Follow safety protocols and guidelines during installation to avoid any hazards.

### Operation

- Once installed, power up the system by following the startup instructions provided in the user manual.
- Monitor the system performance through the built-in smart load controls and energy meter.
- Utilize the smart load control feature for whole-home backup and efficient energy usage.
- Regularly check the system status and battery levels to ensure optimal performance.

## Maintenance

- Perform routine maintenance checks on the system components to ensure they are functioning correctly.
- Clean and inspect the system for any dust or debris accumulation that may affect performance.
- Check and replace any faulty components as per the manufacturer's guidelines.
- Keep the system firmware updated for improved functionality and security.

## FAQ

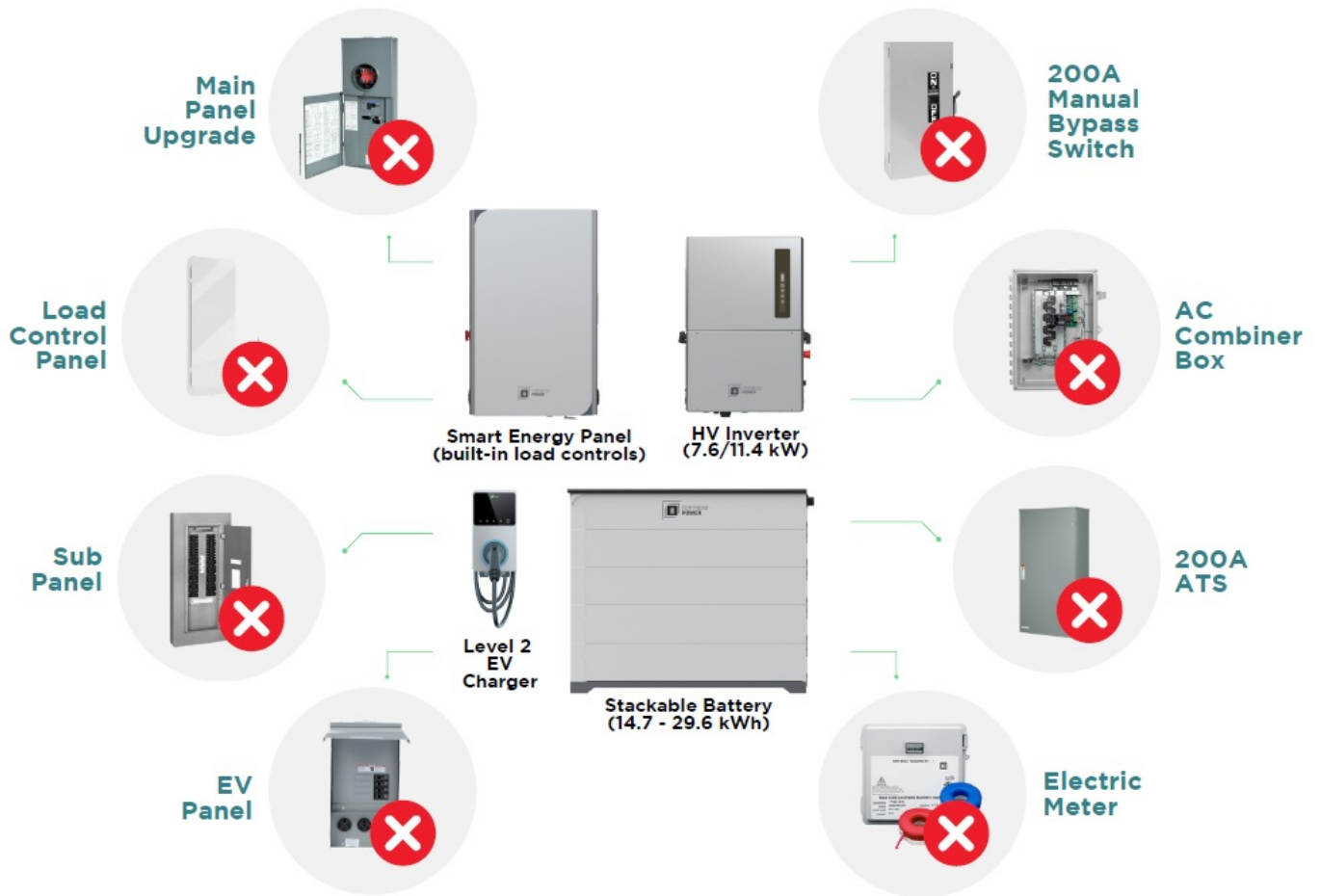
- How can I become an authorized installer for Avalon?
- To become an authorized Avalon installer, you need to participate in a 2-hour training session either in person or online, take the Avalon Authorized Installer Quiz, receive a certificate upon completion, and then start your first installation.
- What is the warranty period for the Fortress Power Avalon product?
- The Fortress Power Avalon product comes with a standard warranty of 15 years, which can be extended to 25 years for added peace of mind.
- What are the benefits of using the Avalon Whole-Home Energy Storage Solution?
- The Avalon system offers built-in smart load controls for whole-home backup, high efficiency with a roundtrip efficiency of 95%, modular stackable batteries for customizable capacity, and a long-lasting LFP battery chemistry ensuring durability and reliability.

## MORE ABOUT POWERPATH FINANCING AS A FORTRESS POWER AVALON INSTALLER, YOU

- Win More Projects with rich features and avoid price wars with a unique offering
- Make Higher Profits with a quick install and lower component costs
- Access Lower Rates & Higher Approvals to save energy costs for your clients with the PowerPath loan financing program
- Offer industry-leading 15-year standard warranty with an extended 25-year Product Warranty

SAVE UP TO \$6,500 IN MATERIAL COSTS

UP TO 30% LESS INSTALL TIME



## Power Up Your Business with Avalon

- Stand out against the competition by offering Avalon today!



Benefits/Features	Fortress Power Avalon	Tesla Powerwall 3	Enphase 5P (3)
Battery Chemistry	LFP	?	LFP
AC Coupling		TBD	
DC Coupling			<b>X</b>
Roundtrip efficiency	95%	89%	89%
Single Inverter Back-Up Capacity	7.6/11.4 kW	11.5 kW	11.52 kW
Single Battery Capacity	14.7~ 29.4 kWh	13.5 kWh	15 kWh
Stackable & Modular		<b>X</b>	<b>X</b>
Built-in Fire Suppression		<b>X</b>	<b>X</b>
Built-in Heater		<b>X</b>	<b>X</b>
Black Start Capable			
Smart Load Control for Whole-Home Backup		<b>X</b>	<b>X</b>
Controllable Level 2 EV Charger Input		<b>X</b>	
Warranty (Years)	15 – 25	4 – 10	15

### Avalon Authorized Installer Training

It's easy to get started!

1. Participating in 2-Hour Training Sections in Person or Online
2. Take the Quick Avalon Authorized Installer Quiz
3. Receive Certificate
4. Begin Your First Installation

### SCAN HERE TO START THE PROCESS



### CONTACT

- [877-497-6937](tel:877-497-6937)
- [www.fortresspower.com](http://www.fortresspower.com)
- [sales@fortresspower.com](mailto:sales@fortresspower.com)

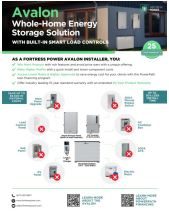
### LEARN MORE ABOUT THE AVALON



## LEARN MORE ABOUT POWERPATH FINANCING



## Documents / Resources

	<p><a href="#">FORTRESS POWER BAEU6PXQNZY Built In Smart Load Controls</a> [pdf] User Guide DAGCmS41Iyl, BAEU6PXQNZY, BAEU6PXQNZY Built In Smart Load Controls, BAEU6PXQNZY, Built In Smart Load Controls, Smart Load Controls, Load Controls, Controls</p>
---	---

## References

- [User Manual](#)

[Manuals+](#), [Privacy Policy](#)

This website is an independent publication and is neither affiliated with nor endorsed by any of the trademark owners. The "Bluetooth®" word mark and logos are registered trademarks owned by Bluetooth SIG, Inc. The "Wi-Fi®" word mark and logos are registered trademarks owned by the Wi-Fi Alliance. Any use of these marks on this website does not imply any affiliation with or endorsement.