

**FORTINET**

## **EVO-ALL Immobilizer Bypass Module**



# **FORTINET EVO-ALL Immobilizer Bypass Module Installation Guide**

[Home](#) » [FORTINET](#) » FORTINET EVO-ALL Immobilizer Bypass Module Installation Guide 

### **Contents**

- [1 FORTINET EVO-ALL Immobilizer Bypass Module](#)
- [2 Vehicle functions](#)
- [3 DESCRIPTION](#)
- [4 WIRING CONNECTION](#)
- [5 DCRYPTOR PROGRAMMING PROCEDURE](#)
- [6 BEFORE PROGRAMMING](#)
- [7 KEY BYPASS PROGRAMMING PROCEDURE 2/2](#)
- [8 REMOTE STARTER FUNCTIONALITY](#)
- [9 FAQ](#)
- [10 Documents / Resources](#)
  - [10.1 References](#)


**FORTINET**®


**FORTINET EVO-ALL Immobilizer Bypass Module**





## Vehicle functions

supported in this diagram (functional if equipped)

		Vehicle functions supported in this diagram (functional if equipped)   Fonctions du véhicule supportées dans ce diagramme (fonctionnelles si équipé)												
	VEHICLE VEHICULES	YEARS ANNÉES	Immobilizer bypass Contournement d'immobilisateur	Lock	Unlock	Arm	Disarm	Parking Lights	Tachometer	Door Status	Trunk Status	Hand-Brake Status	Foot-Brake Status	OEM Remote monitoring
MAZDA														
3	Push-to-Start - Sedan / Hatchback	2014-2018	•	•	•	•	•	•	•	•	•	•	•	•

	FIRMWARE VERSION VERSION LOGICIELLE	<b>85.[11]</b> MINIMUM	To add the firmware version and the options, use the <b>FLASH LINK UPDATER</b> or <b>FLASH LINK MOBILE</b> tool, sold separately. Pour ajouter la version logicielle et les options, utilisez l'outil <b>FLASH LINK UPDATER</b> ou <b>FLASH LINK MOBILE</b> , vendu séparément.

	Program bypass option: Programmez l'option du contournement:	UNIT OPTION OPTION UNITE		DESCRIPTION
		C1		OEM Remote status (Lock/Unlock) monitoring Suivi des status (Verrouillage/Déverrouillage) de la télécommande d'origine
IF THE VEHICLE IS NOT EQUIPPED WITH FUNCTIONAL HOOD PIN: SI LE VÉHICULE N'EST PAS ÉQUIPÉ D'UN CONTACT DE CAPOT FONCTIONNEL:		A11	<div>OFF NON</div>	Hood trigger (Output Status).
				Contact de capot (état de sortie).
	Program bypass option (Mandatory): Programmez l'option du contournement (Obligatoire):	UNIT OPTION OPTION UNITE		DESCRIPTION
		D2		Unlock before / Lock after (Disarm OEM alarm) Déverrouille avant / Verrouille après (Désarme l'alarme d'origine)

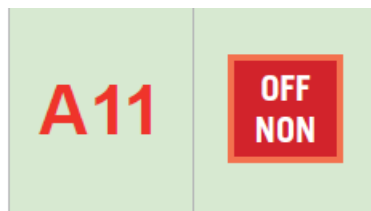
## NOTES

THIS MODULE MUST BE INSTALLED BY A QUALIFIED TECHNICIAN.

- Parts required (Not included)
  - 1X 10 AMP Fuse

## MANDATORY INSTALL

- HOOD PIN
  - HOOD STATUS : THE HOOD PIN SWITCH MUST BE INSTALLED IF THE VEHICLE CAN BE REMOTE STARTED WITH THE HOOD OPEN,\ SET FUNCTION A11 TO OFF.

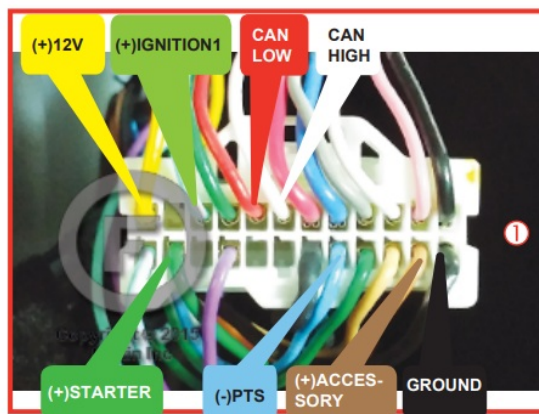


Notice: the installation of safety elements are mandatory. The hood pin is an essential security element and must be installed.

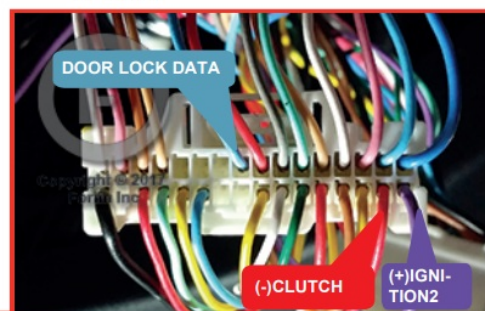
- THIS MODULE MUST BE INSTALLED BY A QUALIFIED TECHNICIAN. A WRONG\ CONNECTION CAN CAUSE PERMANENT DAMAGE TO THE VEHICLE.

## DESCRIPTION

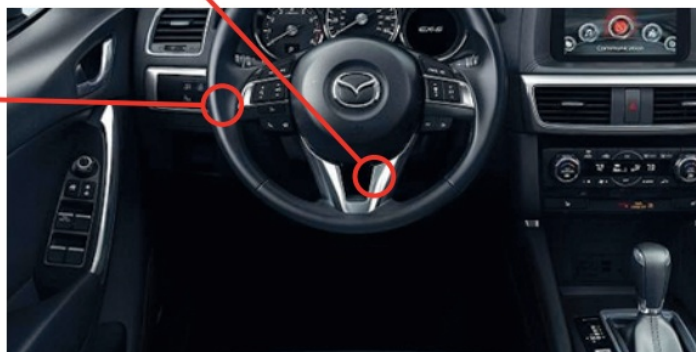
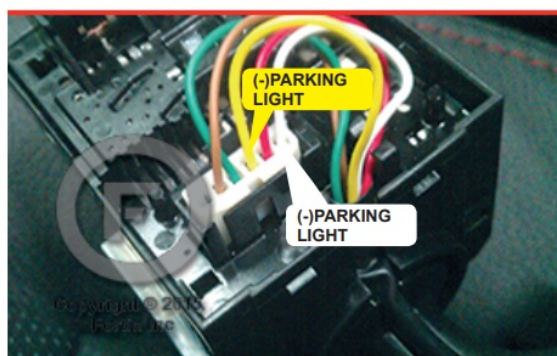
Under steering column, **START-STOP** unit.



② Under steering column, START-STOP unit.  
Sous la colonne de direction, unité DÉMARRAGE.



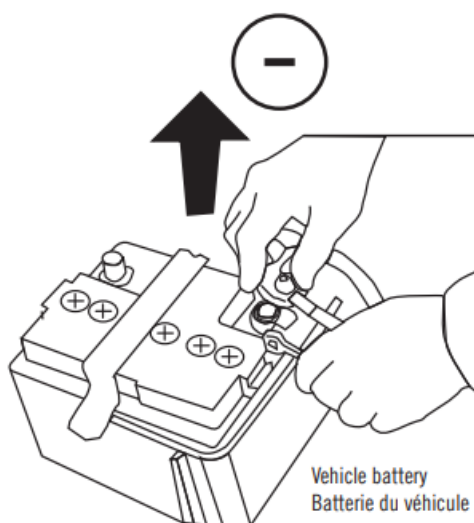
③ Inside the Parking Light switch  
À l'intérieur du commutateur des feux de stationnement



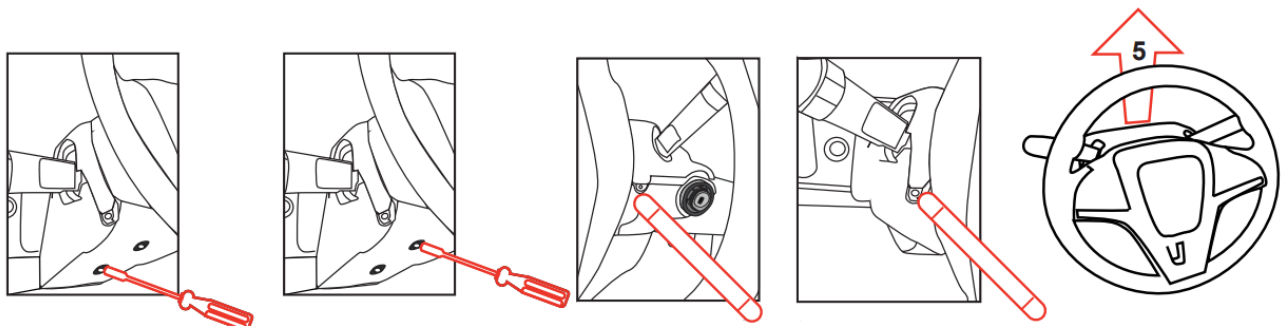
## ATTENTION

Before disconnecting a module, a computer or a control unit from a vehicle: Always disconnect the negative terminal from the vehicle's battery. In these vehicles, the factory keyless entry module is sensitive to interference and may cease to operate if some precautions are not taken. Disconnect the (-) terminal of the battery prior to disconnecting the connectors at the smartkey module below the steering wheel to avoid damage to the smartkey entry module.

1. Disconnect the (-) terminal of the battery.



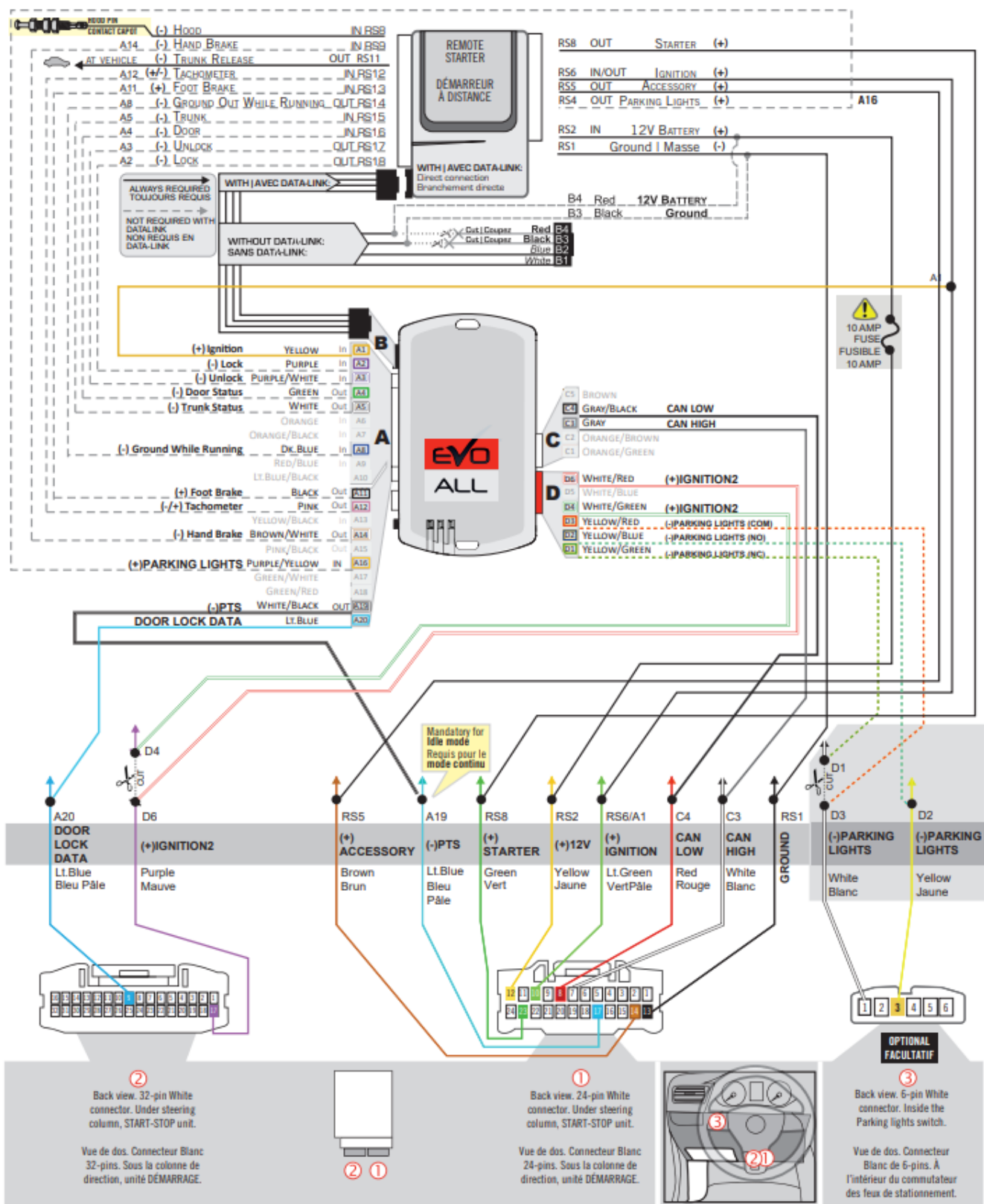
2.



1. Unscrew
    - Under the Steering Column
  2. Unscrew
    - Under the Steering Column
  3. Onclip
    - Left of Steering Column
  4. Onclip
    - Right of the Steering Column
  5. Gently pull up the cover of the steering column.
3. Make the following connections.

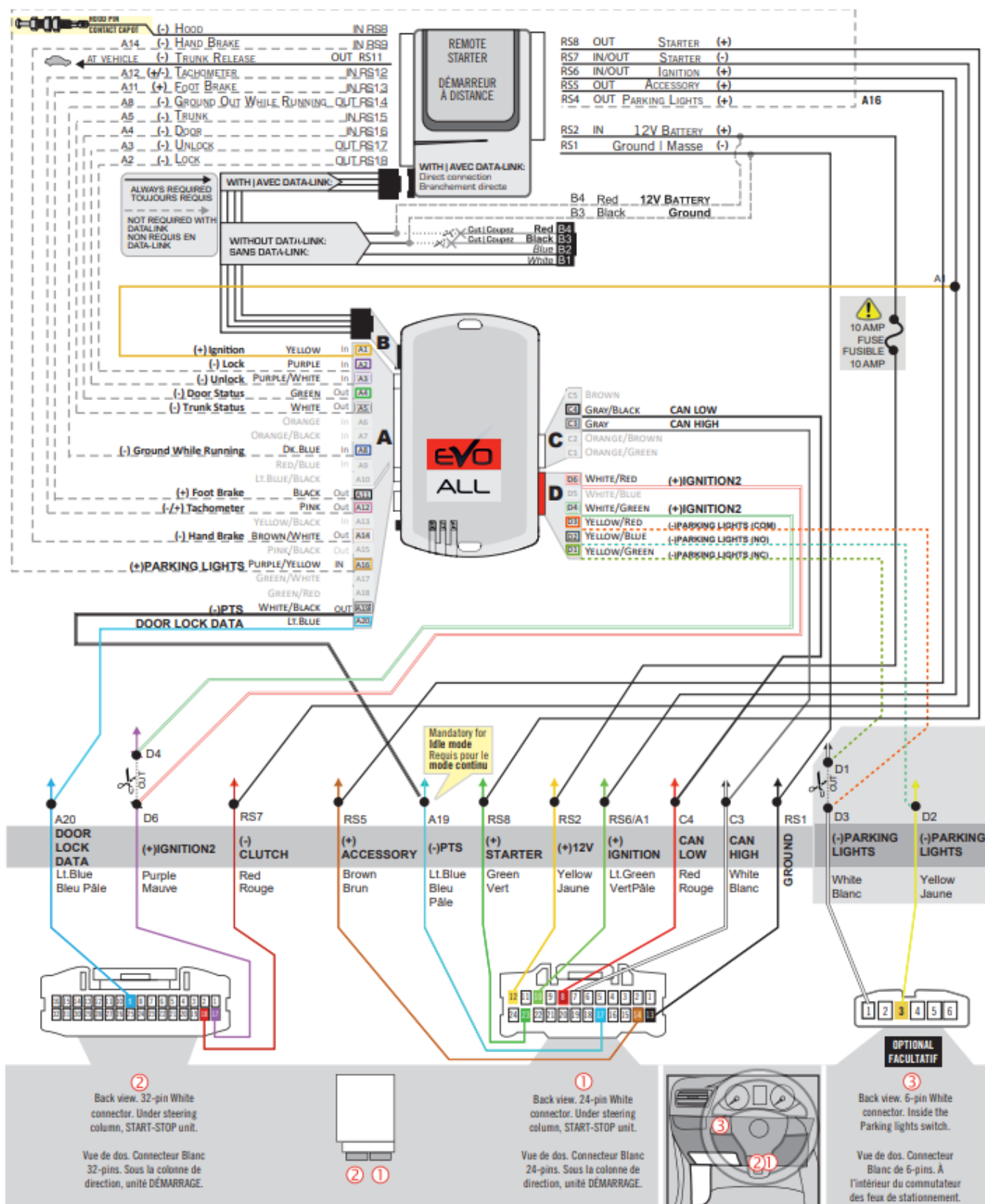
## WIRING CONNECTION

### AUTOMATIC TRANSMISSION WIRING CONNECTION

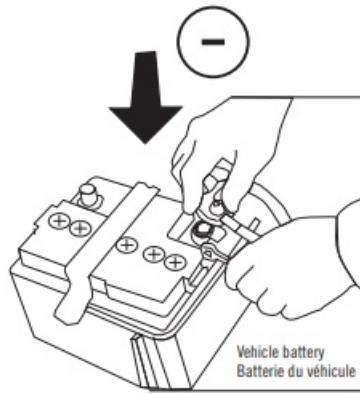


## MANUAL TRANSMISSION WIRING CONNECTION











Reconnect the (-) terminal of the battery.



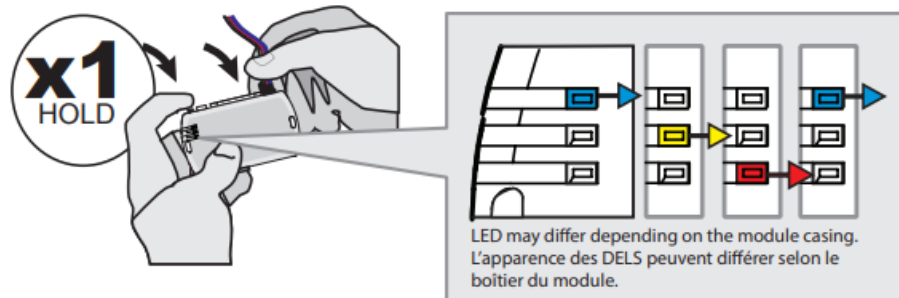
## DCRYPTOR PROGRAMMING PROCEDURE

 <b>Parts required (not included)</b> <b>Pièces requises (non incluses)</b>		
1x  <b>FLASH LINK UPDATER,</b> 1x  <b>FLASH LINK MANAGER</b> <small>SOFTWARE   PROGRAMME</small>	<b>OR</b> <b>OU</b>	1x  <b>FLASH LINK MOBILE</b> 1x  <b>FLASH LINK MOBILE APP</b> <small>Smartphone <i>Android</i> or <i>iOS</i> with Internet connection  <i>(Internet provider charges may apply)</i>  Téléphone Intelligent <i>Android</i> ou <i>iOS</i> avec connexion  Internet <i>(des frais du fournisseur Internet peuvent s'appliquer)</i></small>

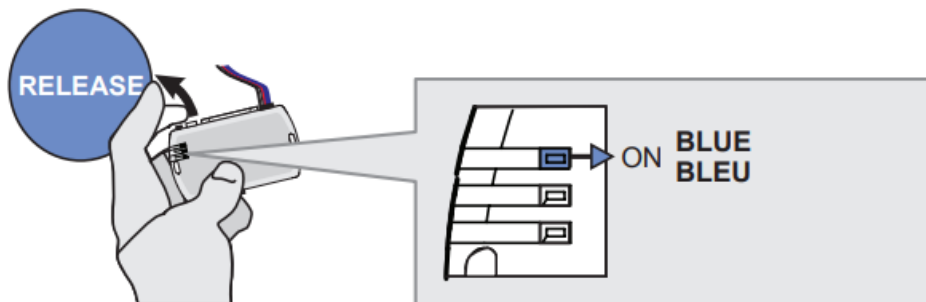
### BEFORE PROGRAMMING

#### BEFORE PROGRAMMING, SET THE UNIT OPTIONS AND SAVE

- Press and hold the programming button: Connect the 4-PIN Data-link harness (Black connector).
  - The Blue, Red, Yellow and Blue & Red LEDs will alternatively illuminate.

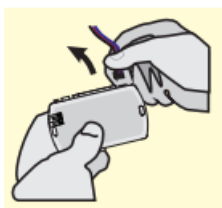


- Release the programming button when the Blue LED is ON.

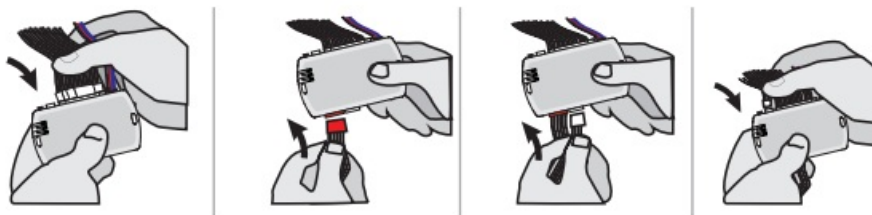


- If the LED are not solid BLUE, disconnect the 4-PIN Data-link harness (Black connector) and go back to step1.





3. Connect the required remaining harnesses.

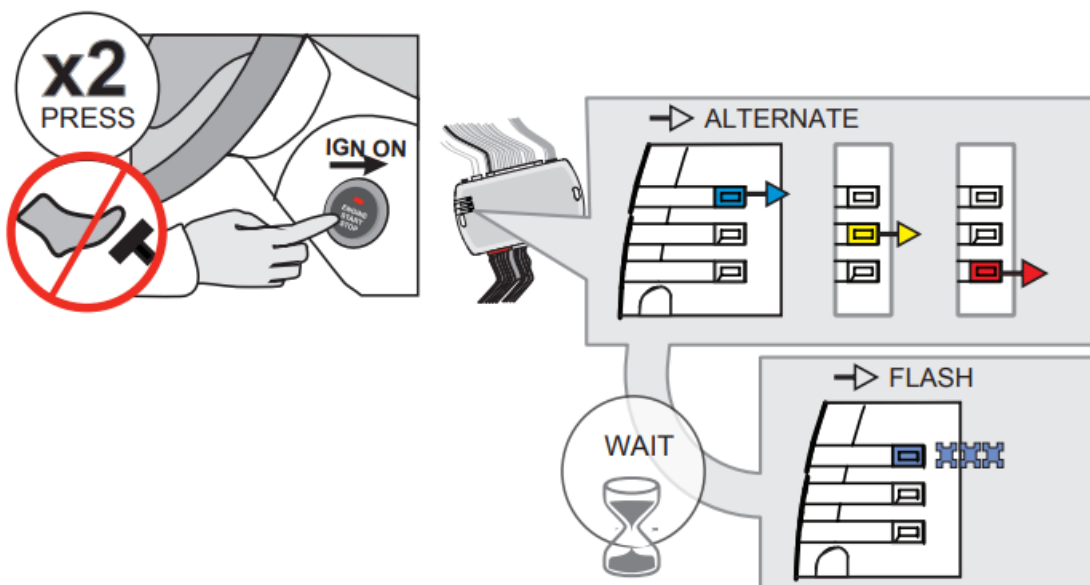


4. Do not press the brake pedal. Press the Push-to-Start button twice to turn ON the ignition.

- The Blue, Red and Yellow LEDs will alternatively illuminate.

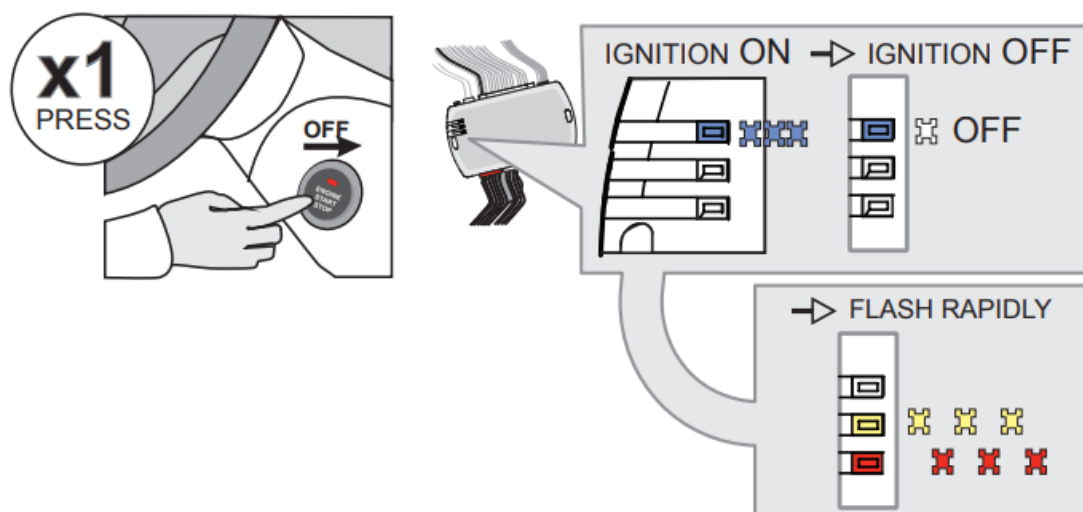
wait,

- The BLUE LED will flash rapidly.



5. Press the Push-to-Start button once to turn off the ignition.

- The BLUE LED will turn off.
- The RED and YELLOW LEDs will alternate.



**6**

**7**

**FLASH LINK UPDATER\***

**FLASH LINK MANAGER\***  
SOFTWARE | PROGRAMME

OR  
OU

VEHICLE'S OBDII  
CONNECTOR  
CONNECTEUR OBDII  
DU VÉHICULE

**FLASH LINK MOBILE\***

Smartphone\*  
(Internet provider  
charges  
may apply)  
Téléphone  
Intelligent\*  
(des frais du  
fournisseur  
Internet peuvent  
s'appliquer)

**8**

**Disconnect** all the connectors and after  
the Data-Link (4-pins) connector.

**Débranchez** tous les connecteurs et ensuite  
le connecteur Data-Link (4-pins).

Use the tool:  
**FLASH LINK UPDATER** or  
**FLASH LINK MOBILE**  
to visit the DCryptor menu.

Utilisez l'outil:  
**FLASH LINK UPDATER** ou  
**FLASH LINK MOBILE**  
pour visiter le menu DCryptor.

**AFTER DCRYPTOR PROGRAMMING COMPLETED**  
Go back to the vehicle and **reconnect** the 4-Pin (Data-Link)  
connector and after, all the remaining connector.

**APRÈS LA PROCÉDURE DE PROGRAMMATION**  
**DCRYPTOR COMPLÉTÉE** : **retournez** au véhicule et  
**rebranchez** le connecteur 4-pins (Data-Link)  
et après, tous les connecteurs du EVO-ALL.

The module is now programmed.  
Le module est programmé.

**REMOTE STARTER / ALARM VERIFICATION**  
**PROCEDURE | PROCÉDURE DE VÉRIFICATION**  
**DU DÉMARREUR À DISTANCE / ALARME**

Test the remote starter. Remote start the vehicle.  
Testez le démarreur à distance. Démarrez le véhicule  
à distance.

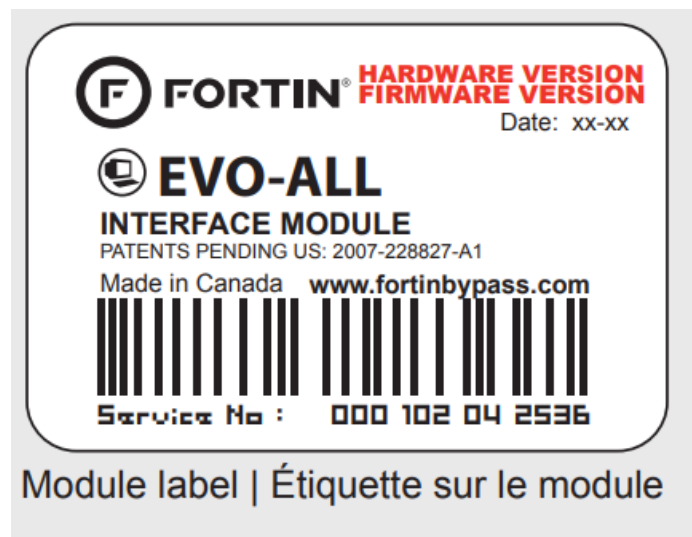
## REMOTE STARTER FUNCTIONALITY

	<p>Start</p>	<p>UNLOCK</p>		<p>x1 PRESS</p>	<p>FLASH x2</p>	
<p>All doors must be closed.</p>	<p>Remote start the vehicle.</p>	<p><b>Unlock</b> the doors with either:</p> <ul style="list-style-type: none"> <li>• The OEM remote</li> <li>• The remote-starter remote</li> </ul>	<p>Enter the vehicle with the SMART-KEY.</p>	<p><b>DO NOT PRESS THE BRAKE PEDAL.</b></p> <p>Press and release the Push-to-Start button once.</p>	<p>Wait for the orange led on the Push-to-Start button to turn on and off twice.</p>	<p>Press the brake pedal. The vehicle can now be put in to gear and driven.</p> <p><small>If the Smart-Key is not detected the vehicle will shut down.</small></p>

## Notice: Updated Firmware and Installation Guides

Updated firmware and installation guides are posted on our website on a regular basis. We recommend that you update this module to the latest firmware and download the latest installation guide(s) prior to the installation of this product.

## Module label



## WARNING

The information on this sheet is provided on an (as is) basis with no representation or warranty of accuracy whatsoever. It is the sole responsibility of the installer to check and verify any circuit before connecting to it. Only a computer-safe logic probe or digital multimeter should be used. FORTIN ELECTRONIC SYSTEMS assumes absolutely no liability or responsibility whatsoever pertaining to the accuracy or currency of the information supplied. The installation in every case is the sole responsibility of the installer performing the work, and FORTIN ELECTRONIC SYSTEMS assumes no liability or responsibility whatsoever resulting from any type of installation, whether performed properly, improperly or any other way. Neither the manufacturer nor the distributor of this module is responsible of damages of any kind directly or indirectly caused by this module, except for the replacement of this module in case of manufacturing defects. This module must be installed by a qualified technician. The information supplied is a guide only. This instruction guide may change without notice. Visit [www.fortinbypass.com](http://www.fortinbypass.com) to get the latest version.

## TECH SUPPORT

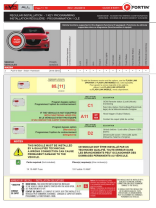
- Tél: 514-255-HELP (4357)
- 1-[877-336-7797](tel:877-336-7797)
- [www.fortinbypass.com](http://www.fortinbypass.com)

This guide may change without notice. See [www.fortin.ca](http://www.fortin.ca) for the latest version

## FAQ

- **Q: Is it necessary to install the hood pin switch?**
  - A: Yes, if the vehicle is not equipped with a functional hood pin, it is mandatory to install the hood pin switch for proper operation and security.
- **Q: Can I program the bypass option myself?**
  - A: It is recommended to have a qualified technician program the bypass option to avoid any incorrect configurations that may cause damage to the vehicle.
- **Q: What precautions should I take when disconnecting components?**
  - A: Always disconnect the negative terminal from the battery before disconnecting any modules or control units from the vehicle to prevent interference or damage to sensitive components like the factory keyless entry module.

## Documents / Resources



[FORTINET EVO-ALL Immobilizer Bypass Module](#) [pdf] Installation Guide  
63511, AR35, EVO-ALL Immobilizer Bypass Module, EVO-ALL, Immobilizer Bypass Module, Bypass Module

## References

- [S route.si - This website is for sale! - route Resources and Information.](#)
- [User Manual](#)

### Manuals+, Privacy Policy

This website is an independent publication and is neither affiliated with nor endorsed by any of the trademark owners. The "Bluetooth®" word mark and logos are registered trademarks owned by Bluetooth SIG, Inc. The "Wi-Fi®" word mark and logos are registered trademarks owned by the Wi-Fi Alliance. Any use of these marks on this website does not imply any affiliation with or endorsement.