



# FORTINET 4800F Series Hyperscale Data Center User Guide

[Home](#) » [FORTINET](#) » FORTINET 4800F Series Hyperscale Data Center User Guide 

## FORTINET 4800F Series Hyperscale Data Center User Guide



### Contents

- [1 Before you begin](#)
- [2 The Essentials](#)
- [3 Package Contents](#)
- [4 Quick Setup](#)
- [5 Additional Setup Options](#)
- [6 SFP Modules](#)
  - [6.1 Installation](#)
  - [6.2 Removal](#)
- [7 Desktop Installation](#)
- [8 Rack Installation](#)
  - [8.1 Rail Assembly](#)
  - [8.2 Attach the Inner Rails to the Appliance](#)
  - [8.3 Attach the Outer Rails to the Rack](#)
  - [8.4 Install the Appliance](#)
- [9 Documents / Resources](#)
  - [9.1 References](#)
- [10 Related Posts](#)

### Before you begin

Register your device to access Forti Guard updates, cloud management, firmware upgrades, technical support

and warranty coverage.

<http://support.fortinet.com>



### Forti Explorer App

Rapidly provision, deploy, and monitor Security Fabric components including Forti Gate and Forti Wi Fi devices from your mobile. Download now for free.

Scan the QR Code or visit:



<https://links.fortinet.com/fortiexplorer/downloads>

## The Essentials



### Default Logins

<https://192.168.1.99>

- **Username:** admin
- **Password:** leave blank

**MGMT1 IP** is 192.168.1.99

**MGMT2 IP** is 192.168.2.99

## Admin Guide

For a detailed Getting Started guide, setup and configuration information, refer to the Admin Guide on <https://docs.fortinet.com/>

## Customer Service

For contracts, licensing, product registration and account management, contact Forti Care Support at <https://www.fortinet.com/support/contact>

Thank you for choosing Fortinet

## Package Contents

**FortiGate 4800F Series** FG-4800F and FG-4801F

- **FortiGate Device**



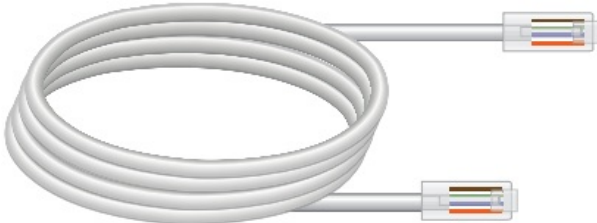
- **Quick Start Guide**



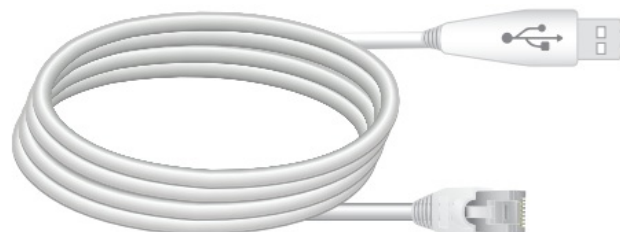
- **4x C15 Power Cables**



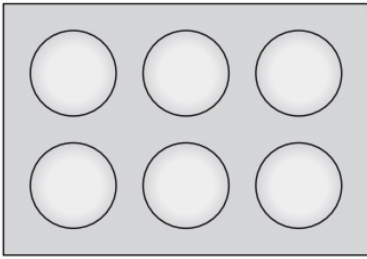
- **1x Ethernet Cable**



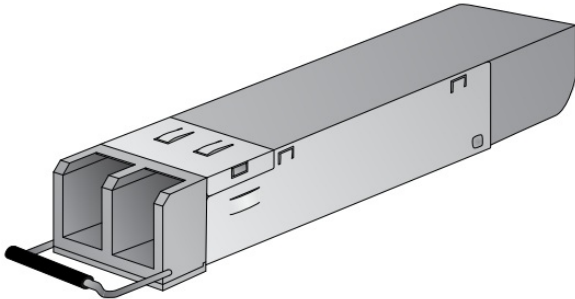
- **1x Console Cable**



- **6x Rubber Feet**



- **2x SFP+ Transceivers**



- **1x Rail Kit**



## Quick Setup

**Unpack the box, power the device, plug the Ethernet cable from a WAN port to the Internet and launch Forti Explorer using one of the following:**



### **BLE Auto Detection**

1. Enable Bluetooth on your Fortinet device and your mobile, then place them near each other
2. Forti Explorer will automatically detect your device
3. Follow the on-screen instructions to complete your setup

## USB Connectivity

1. Connect your mobile to your Fortinet device with a USB cable
2. If the device is not detected, navigate to My Fabric, tap Add and follow the Forti Explorer's on-screen instructions



### **FortiGate Cloud Key Registration**

1. Navigate to My Fabric, then tap Add

2. Scan the FortiGate Cloud Key located on your Fortinet device
3. Follow the on-screen instructions to complete your setup

**Note:** Forti Explorer can manage Forti Gates without Wi Fi capabilities once they have been provisioned to allow HTTP/S admin access

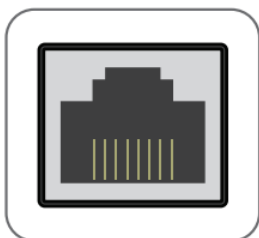
## Additional Setup Options

Set up your Fortinet device locally or connect using [forticloud.com](https://forticloud.com)

### GUI

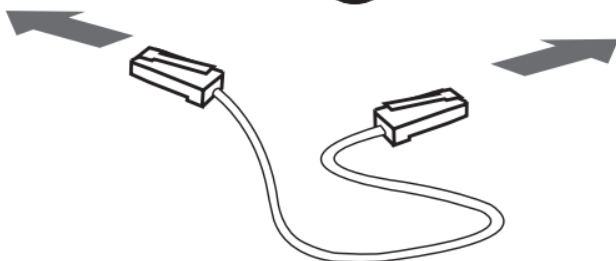
- MGMT1

1



- Ethernet Cable

2



- Management Computer

3

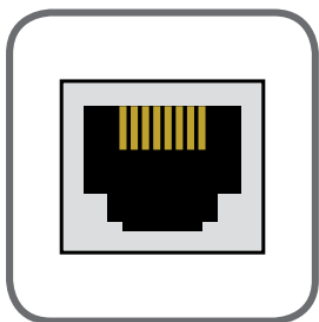


**Note:** For static IP configuration, use 192.168.1.1 with subnet mask 255.255.255.0

## CLI

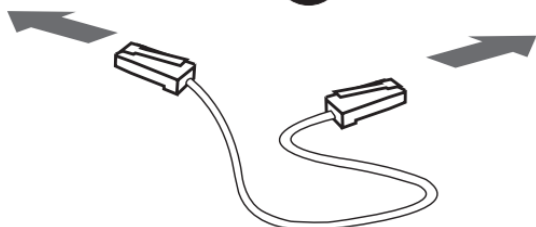
- Console Port

1

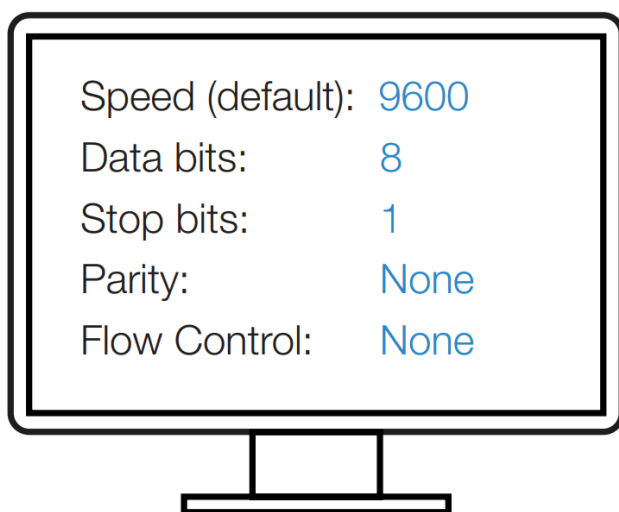


- USB Console Cable

2



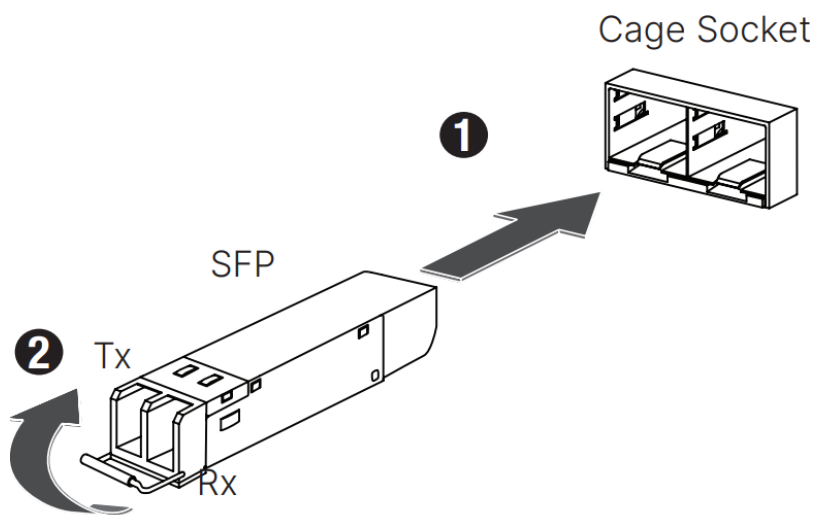
- Management Computer



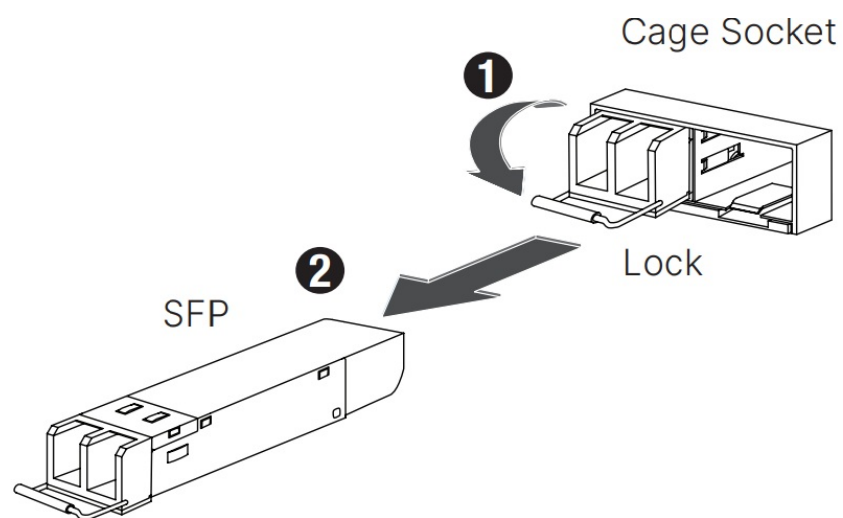
**Note:** For a detailed CLI guide, visit [docs.fortinet.com](https://docs.fortinet.com)

## SFP Modules

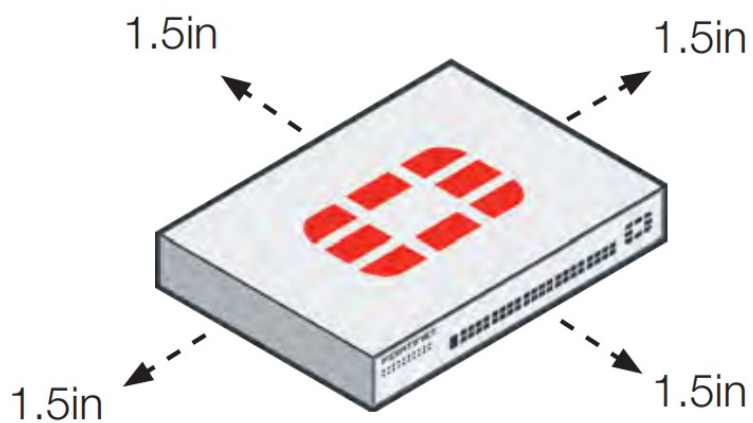
### Installation



#### Removal

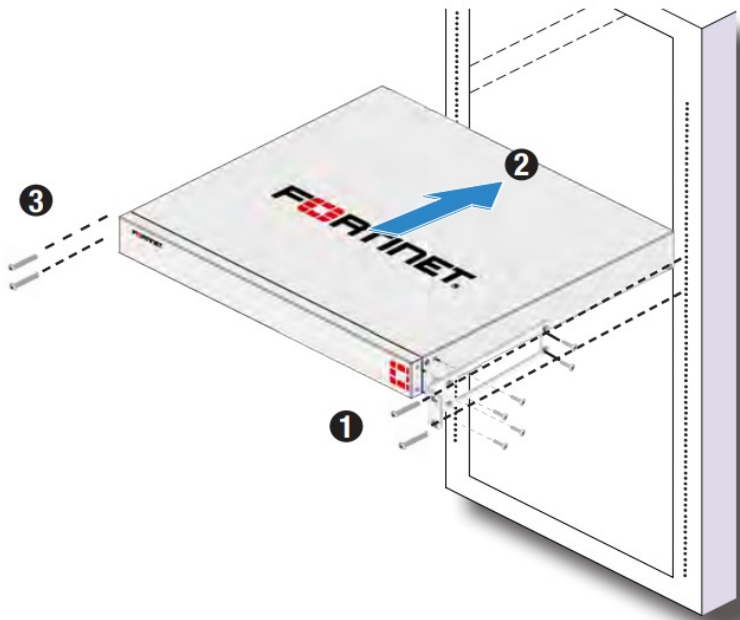


#### Desktop Installation



**Note:** Place the device on a flat, clean and stable surface.

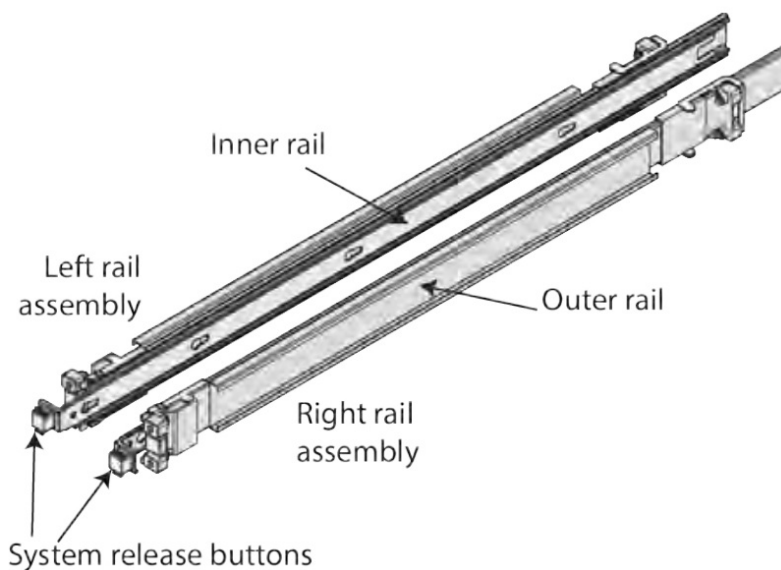
#### Rack Installation



**Note:** The recommended clearance is 1.5 inches above and below the device in a 19 inch rack.

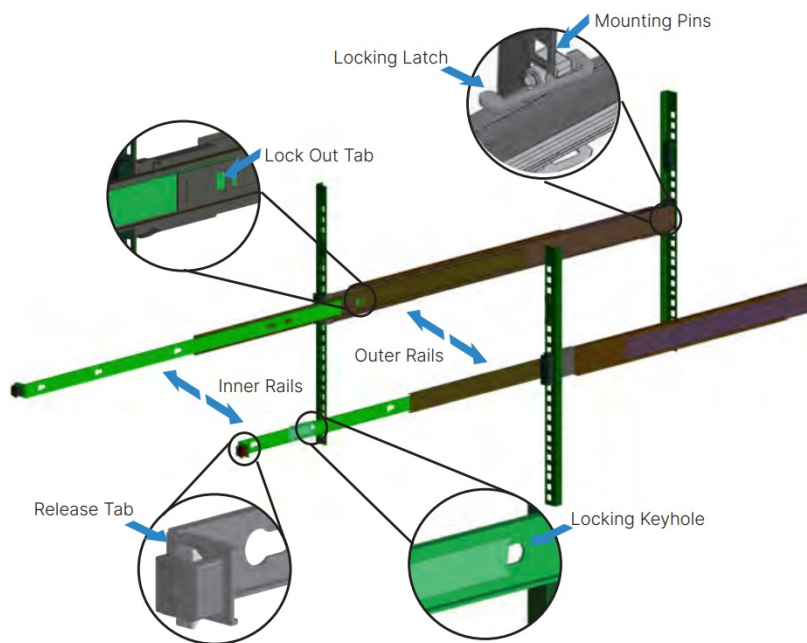
**Caution:** To avoid personal injury or damage to the device, it is recommended that two or more people mount the device on a rack.

#### Rail Assembly



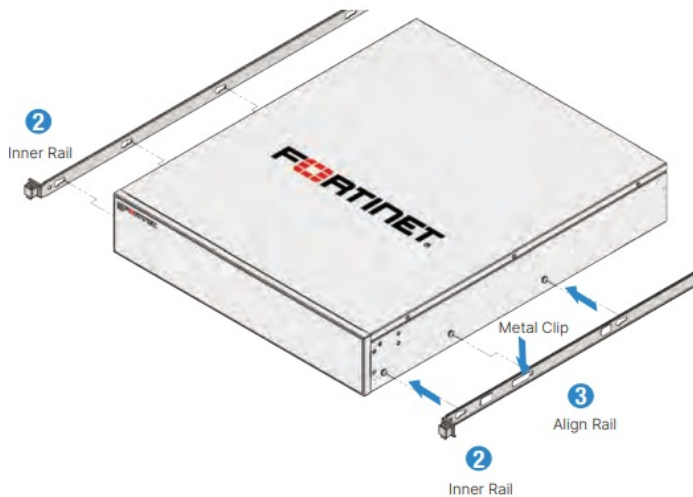
- The rail kit includes a left and a right rail assembly
  - Each rail assembly includes an inner rail, a middle rail, and an outer rail
  - The inner rail has locking keyholes used to secure the rail to the appliance
  - The inner rail rear end has a lock out tab which slides into the middle rail
  - The middle rail is in the outer rail and used to guide the inner rail into the outer rail
  - The outer rail has front and rear mounting pins that push into to the rack holes
  - The outer rail also has front and rear locking latches to secure the rail to the rack
- Inner Rails Lock Out Tab  
Mounting Pins

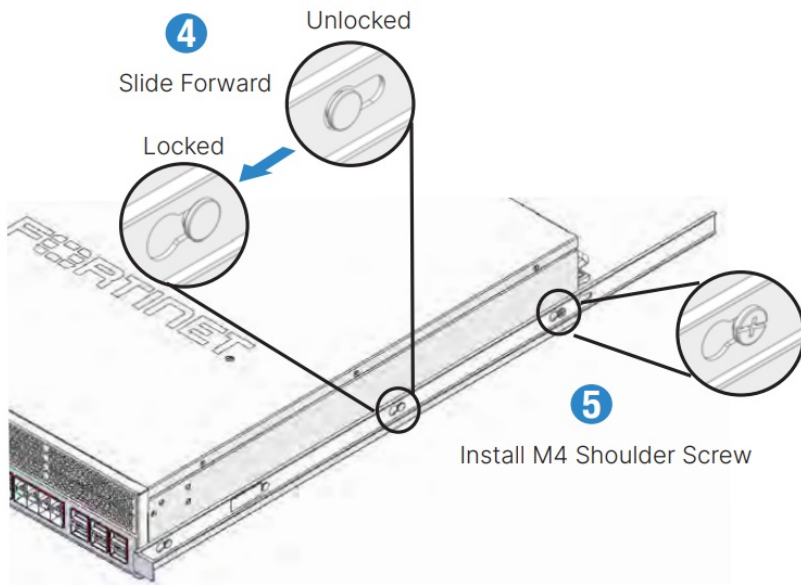




### Attach the Inner Rails to the Appliance

1. Detach the inner rail from the rail assembly by pressing the lock out tab
2. Place an inner rail against a side of the appliance
3. Align the inner rail keyholes with the appliance pins
4. Slide the rail towards the front of the appliance until the metal clip locks into place
5. For inner rails with five keyholes and a chassis with three pins and a thread hole, use the provided M4 shoulder screw to secure the rail to the appliance
6. Repeat steps 1 to 5 for the remaining inner rail





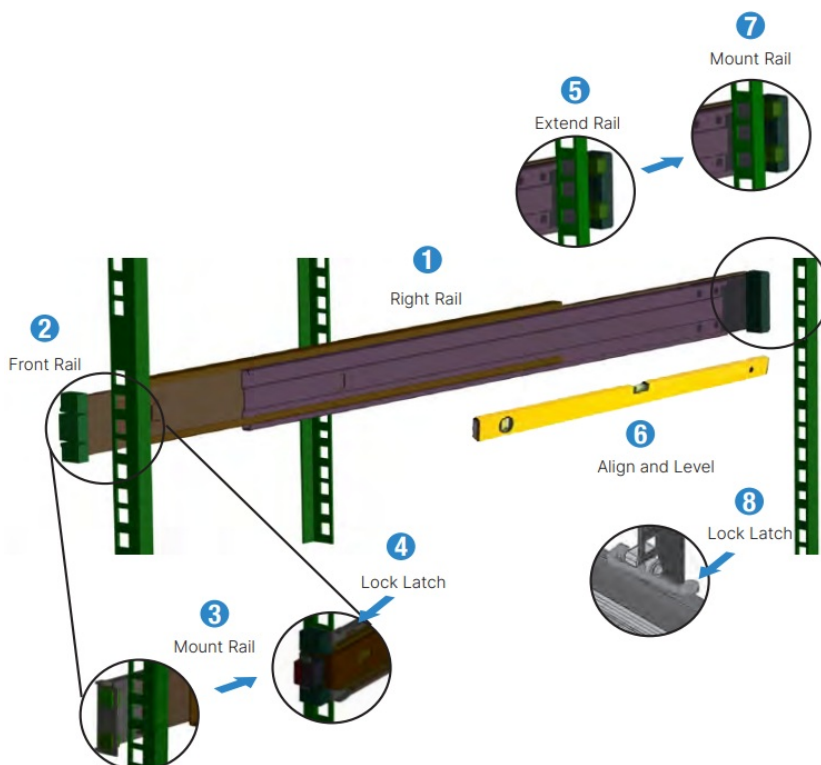
## Attach the Outer Rails to the Rack

### Front Outer Rail

1. Place an outer rail against a side of the rack
2. Align the front outer rail with the front of the rack
3. Push the front outer rail mounting pins into the rack post holes
4. Lock the locking latch to safely secure the front outer rail to the post

### Rear Outer Rail

5. Extend the rear outer rail just past the rack post
6. Level the rail and align the mounting pins
7. Push the rear mounting pins into the rack post holes
8. Lock the locking latch to safely secure the rear outer rail to the post
9. Repeat steps 1 to 8 for the remaining outer rail



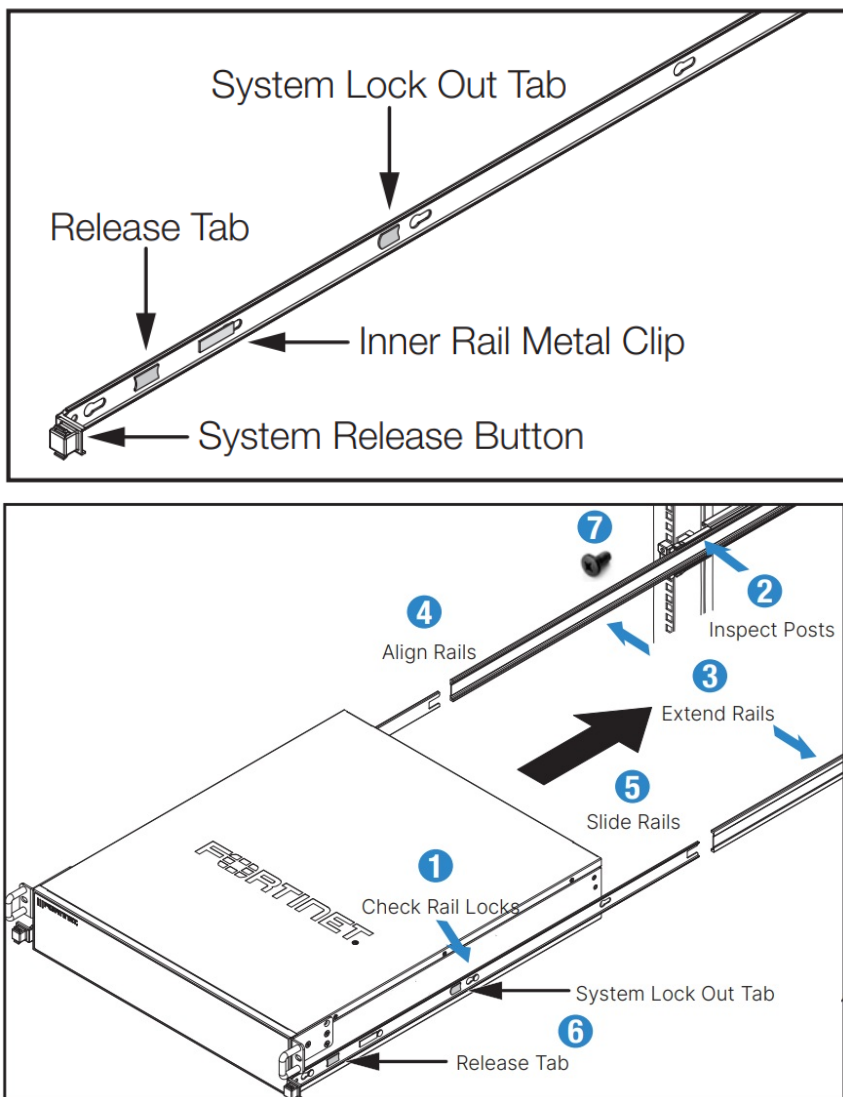
## Install the Appliance

### Safety Precautions

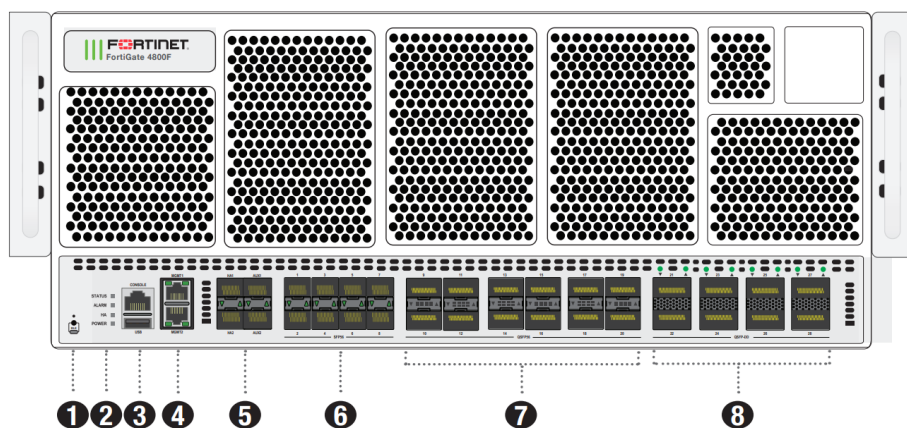
1. Check that the inner rails are secured to the appliance
2. Inspect that the rack posts and outer rails are secured and level

#### Rail Installation

3. Slide the middle outer rails forward until they fully extend and lock into place
4. Using a lifting device, lift the appliance and align the inner rails with the middle rails
5. Slide the appliance and inner rails into the middle rails until there is stop System Lock 6. Apply even pressure and slide the release tabs outward while sliding the appliance all the way into the rack until the system release tabs click and lock into position
6. Use four rack screws (not provided) to secure the appliance to the rack



## FG-4800F Series Front Panel



## 1. BLE

Blue: BLE is activated and connected Flashing Blue: BLE activated, waiting for pairing Off: BLE is deactivated

## 2. STATUS

**Green:** Normal operation

**Flashing Green:** Booting up

3. Console (RJ45) CLI interface USB (USB A) USB 3.0 server port

4. MGMT 1 and MGMT 2 (RJ45) 10 GE management ports

5. Ports HA1, HA2, AUX1, and AUX2


6. Ports 1 to 8 (SFP56)

7. Ports 9 to 20 (QSFP56)

8. Ports 21 to 28 (QSFP-DD)



## Documents / Resources

 <p>QuickStart Guide For FortiGate 4800F Series FG-4800F and FG-4800T</p>	<p><a href="#">FORTINET 4800F Series Hyperscale Data Center</a> [pdf] User Guide 111T15E, TVE-111T15E, TVE111T15E, 4800F Series, 4800F Series Hyperscale Data Center, Hyperscale Data Center, Data Center</p>
--	---

## References

- [Global Leader of Cybersecurity Solutions and Services | Fortinet](#)
- [Welcome](#)
- [Product Downloads | Fortinet Product Downloads | Support](#)
- [User Manual](#)

[Manuals+](#), [Privacy Policy](#)

This website is an independent publication and is neither affiliated with nor endorsed by any of the trademark owners. The "Bluetooth®" word mark and logos are registered trademarks owned by Bluetooth SIG, Inc. The "Wi-Fi®" word mark and logos are registered trademarks owned by the Wi-Fi Alliance. Any use of these marks on this website does not imply any affiliation with or endorsement.